

CERTIFIED SURVEY MAP No.

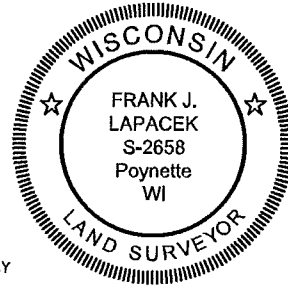
ALL OF LOTS 8 AND 9 AND PART OF LOT 7, BLOCK 95, ORIGINAL PLAT OF MADISON, AS RECORDED IN VOLUME A OF PLATS, ON PAGE 3, DANE COUNTY REGISTRY, LOCATED IN THE NORTHEAST QUARTER OF THE SOUTHEAST QUARTER OF SECTION 14, TOWNSHIP 07 NORTH, RANGE 09 EAST, CITY OF MADISON, DANE COUNTY, WISCONSIN.

0 60 120 180



SCALE : ONE INCH = SIXTY FEET

GRID NORTH
BEARINGS ARE BASED UPON THE WISCONSIN COUNTY COORDINATE SYSTEM (DANE ZONE)

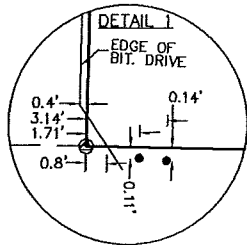


NOTES:
1) SEE SHEET 2 FOR EASEMENT AND BUILDING DETAILS.
2) SEE SHEET 3 FOR ADDITIONAL NOTES AND LEGEND.

FENCE CORNER FALLS 1.9' EAST OF LOT LINE
IRON FENCE

ORIGINAL WALL AND STEPS ARE 0.3' NORTHEAST OF LOT LINE

BITUMINOUS PAVEMENT TURNAROUND IS 5.9' NORTHEAST OF LOT LINE



WOOD FENCE ALONG LOT LINE
SEE DETAIL 1

144.81' 21.59'

54.2'

174.89'

145.13'

198.15'(198')

616' 133' 33"

1362.82'

190.35'

MON TO MON N07°10'55"E 1553.17'

N88°49'05"W 653.02'

546°05'17"W 165.13' (165')

S43°40'10"E 326.4'

304.83'

S43°40'10"E 326.4'

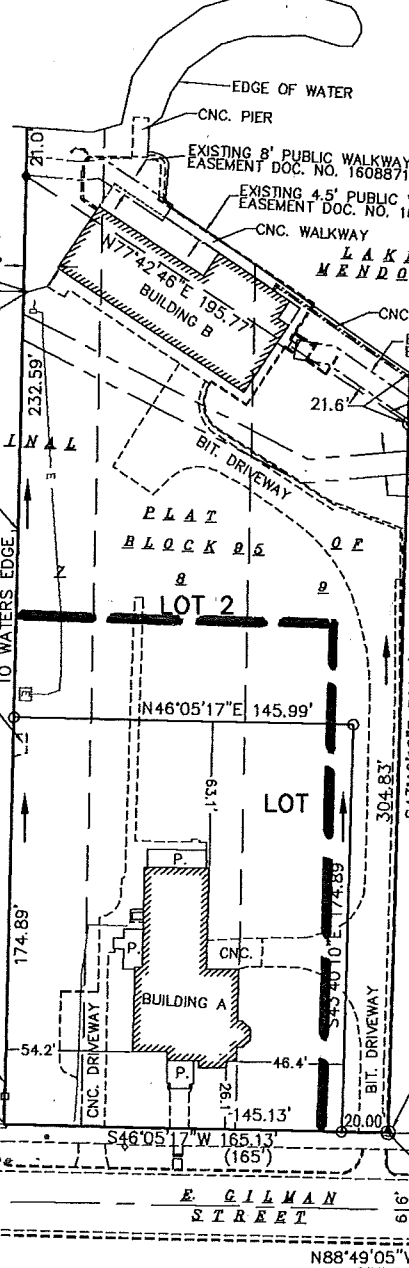
145.99'

N46°05'17"E 145.99'

M43°57'04"W 428.5'

232.59'

14.2'



SURVEYED FOR :
UNIVERSITY OF WISCONSIN
610 WALNUT ST., ROOM 807A
MADISON, WI 53726

SURVEYED BY :

Burse

surveying & engineering inc.

1400 E. Washington Ave, Suite 158
Madison, WI 53703 608.250.9263
Fax: 608.250.9266
email: Mburse@BSE-INC.net
www.bursesurveyengr.com

FOUND BRASS CAP MONUMENT AT THE MEANDER CORNER FOR THE WEST QUARTER CORNER OF SECTION 13-07-09

FOUND BRASS CAP MONUMENT AT THE MEANDER CORNER FOR THE SOUTHWEST CORNER OF SECTION 13-07-09

MAP NO. _____

DOCUMENT NO. _____

VOLUME _____ PAGES _____

Date: 04-17-2013

Plot View: csm

PROJECTS\BSE1625\dwg\BSE1625.DWG

SHEET 1 OF 4