



UW-Madison Science Hall Renovation

Joint Campus Area Committee

May 22, 2025

UWSA/UW Project #: A-24-010/0053-2425

CANNONDESIGN INSITE Consulting Architects



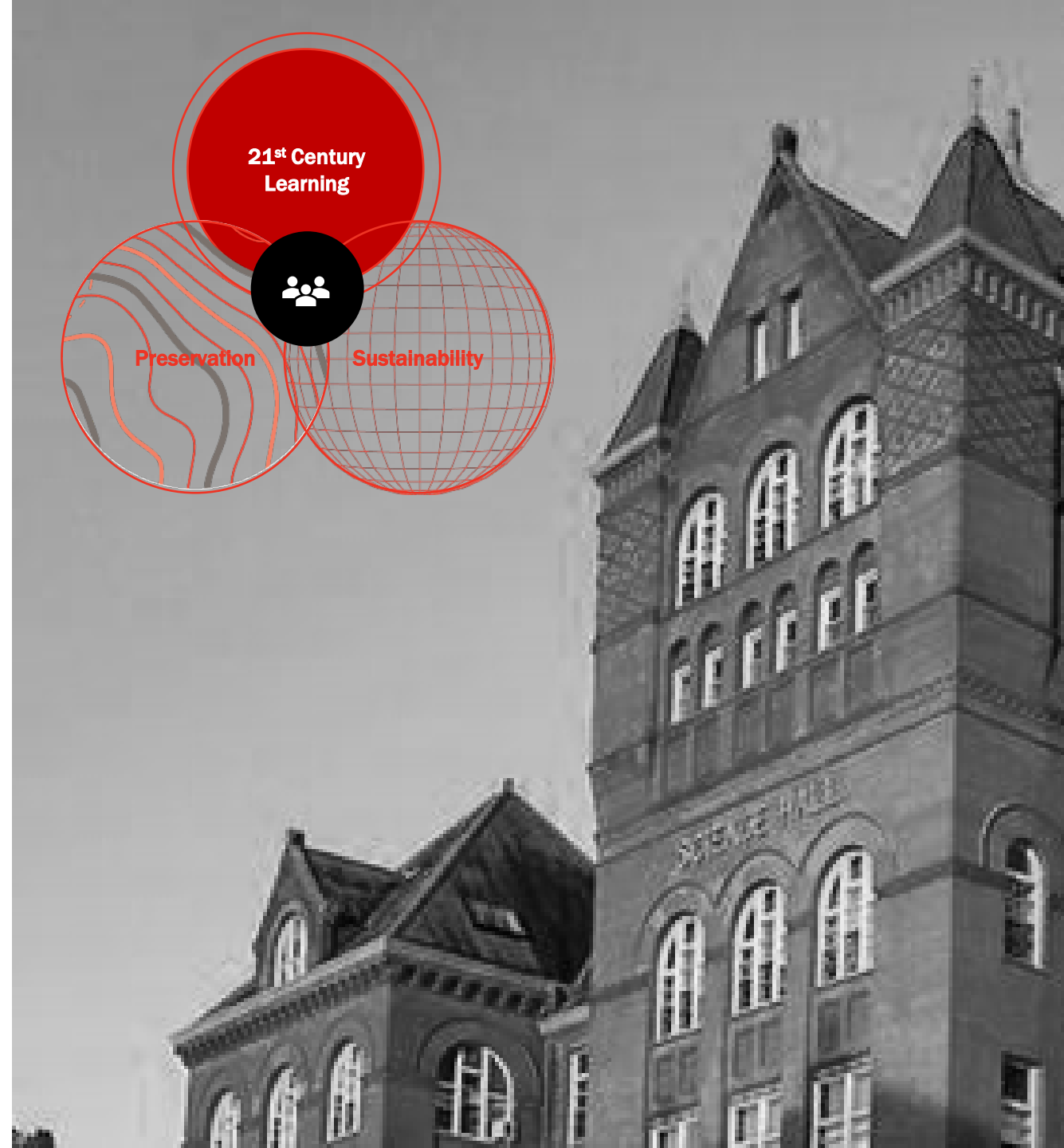
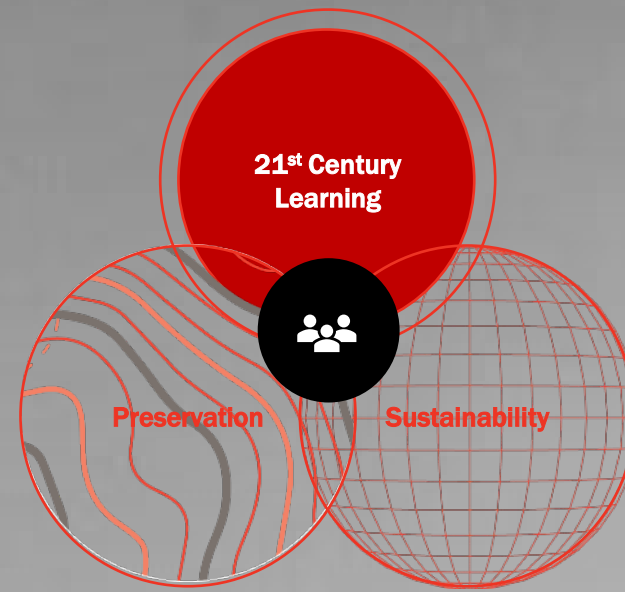
Introduction - Location



Project Goals & Vision

To preserve the rich history of Science Hall and support the evolving academic needs and goals of the L&S Department of Geography and the Nelson Institute for Environmental Studies; creating a welcoming and interdisciplinary destination for learning

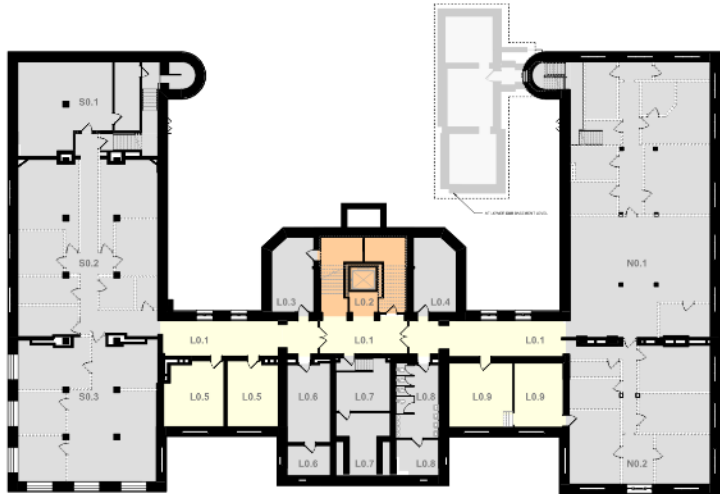
- Enhance the student experience
- Elevate community connectivity
- Embrace synergies & flexibility for the future
- Celebrate the history of a remarkable building
- Showcase sustainability



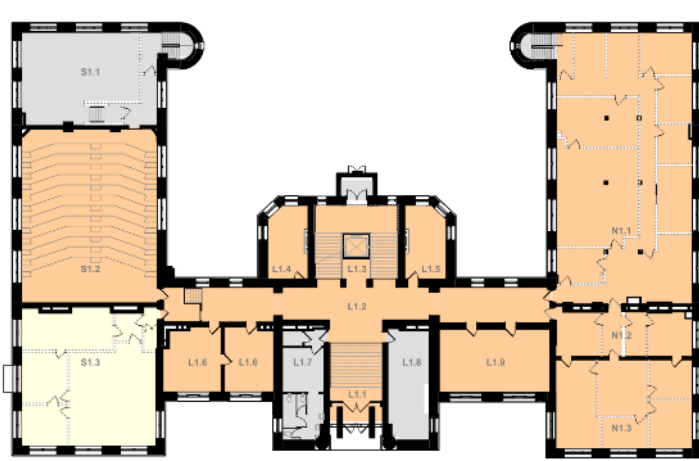
Historic Preservation

GRAPHIC LEGEND:
PRESERVATION TREATMENT PLANS

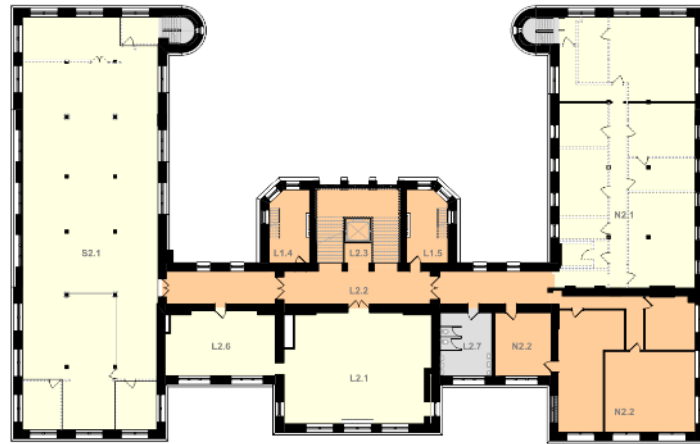
- CLASS A
- CLASS B
- CLASS C
- HISTORIC WALLS
- NON-HISTORIC WALLS



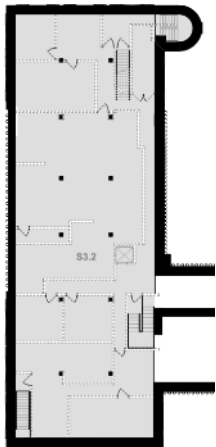
1 BASEMENT - TREATMENT PLANS



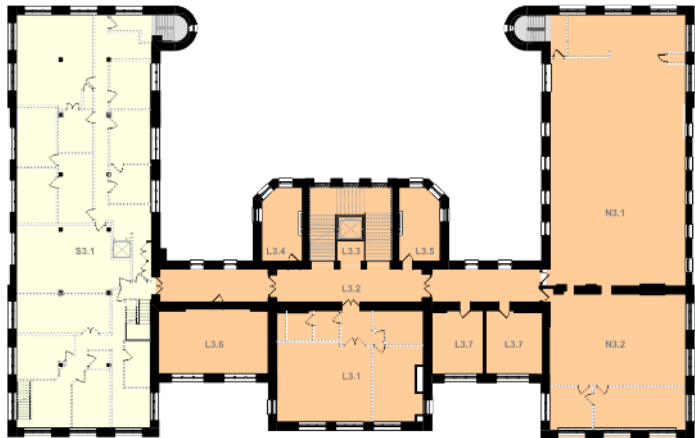
1 FIRST FLOOR - TREATMENT PLANS



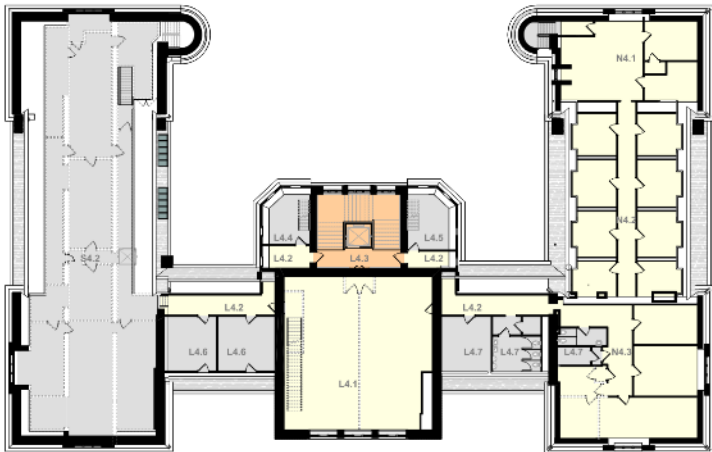
1 SECOND FLOOR - TREATMENT PLANS



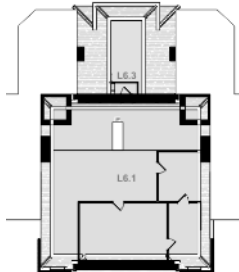
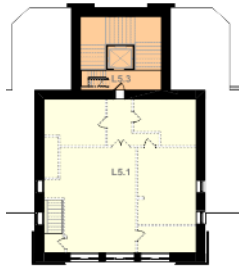
1 THIRD FLOOR MEZZANINE - TREATMENT PLANS



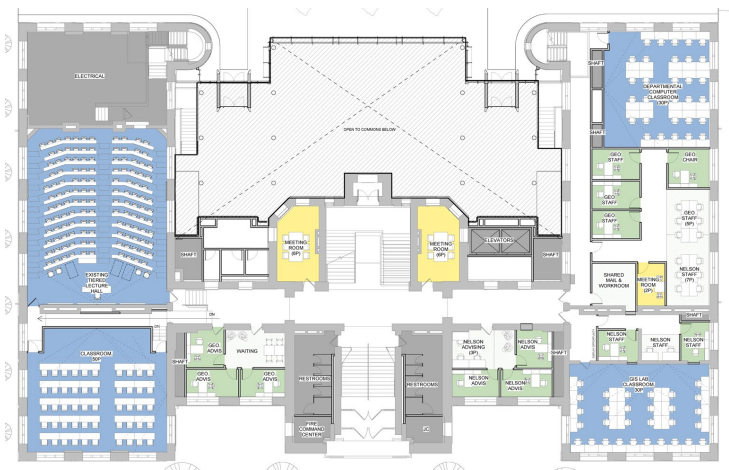
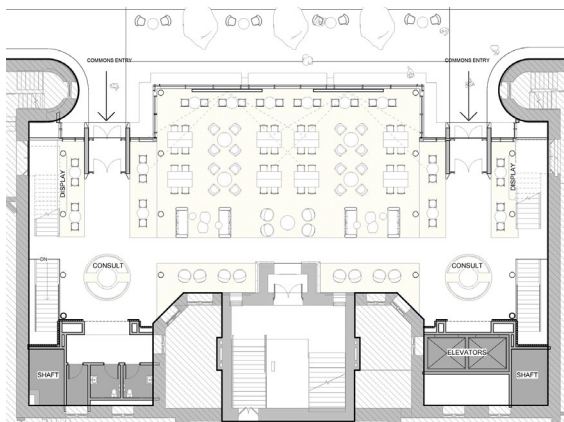
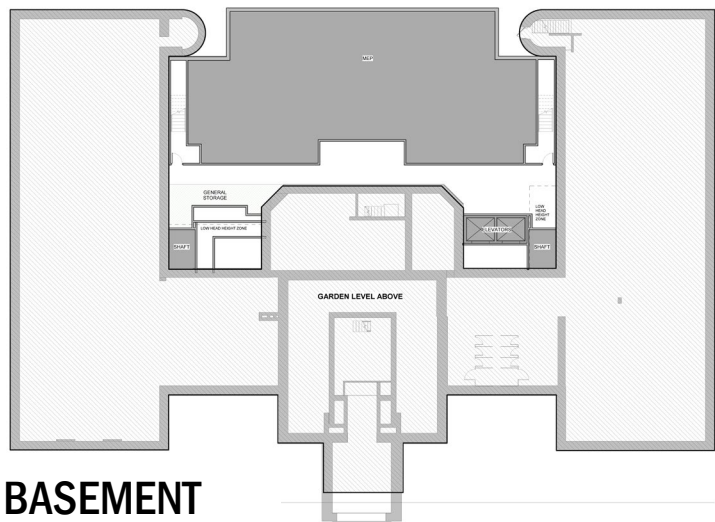
1 THIRD FLOOR - TREATMENT PLANS



1 FOURTH FLOOR - TREATMENT PLANS



SD Plan Updates



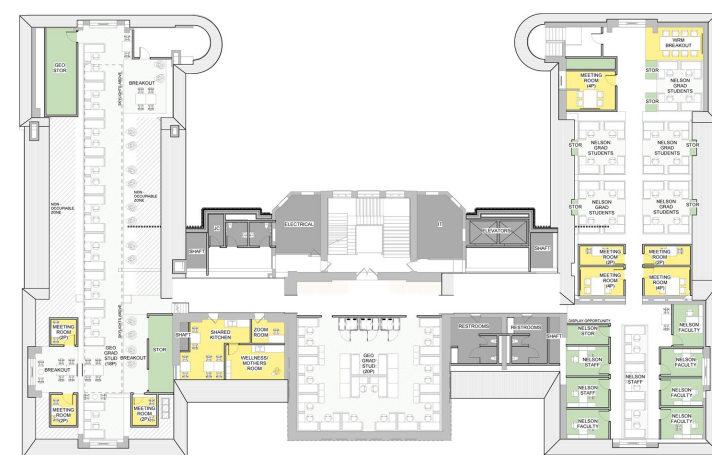
SD Plan Updates



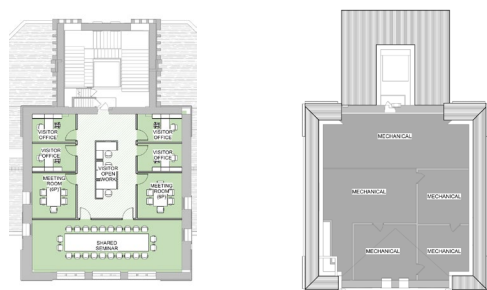
SECOND FLOOR



THIRD FLOOR



FOURTH FLOOR



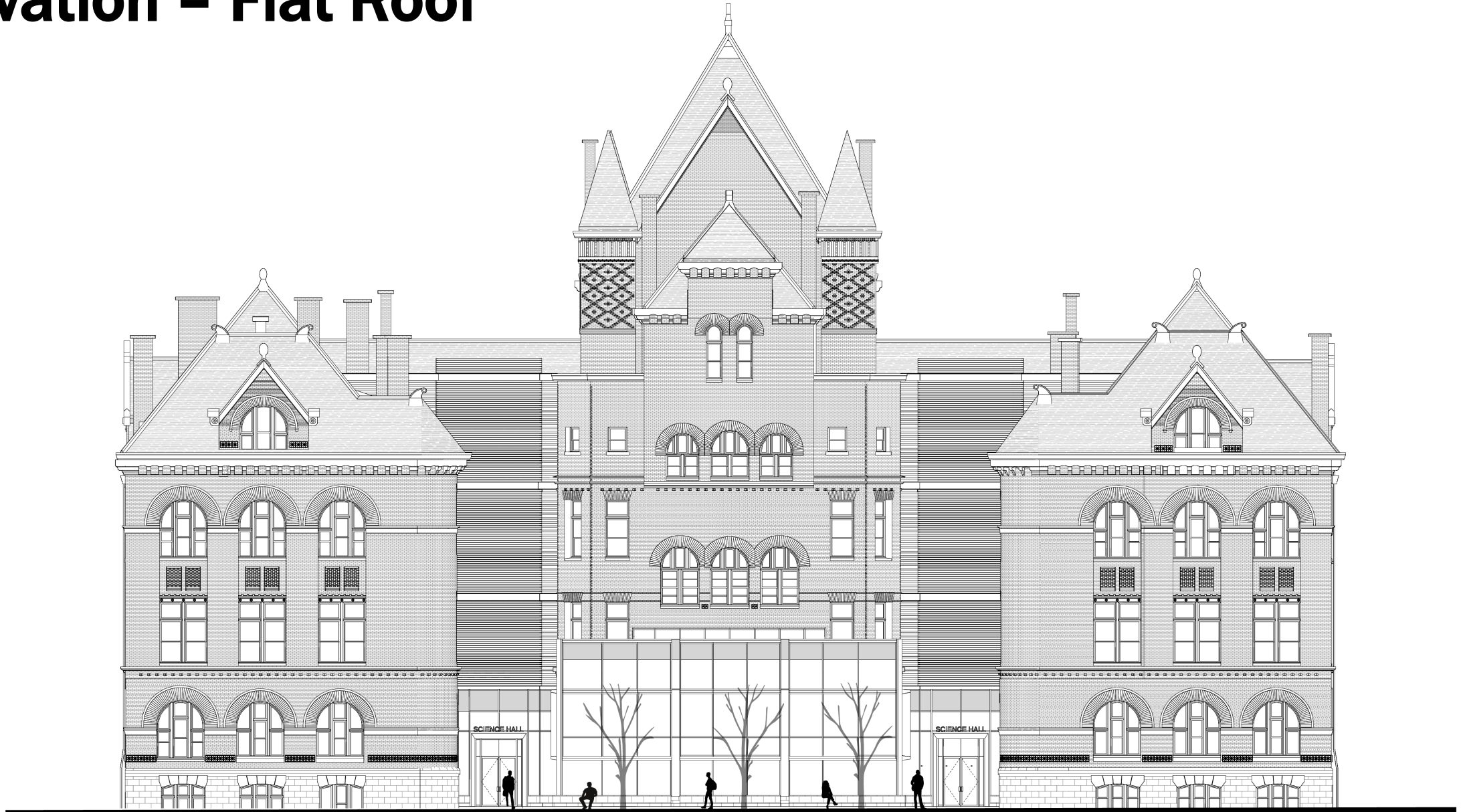
FIFTH & SIXTH FLOORS



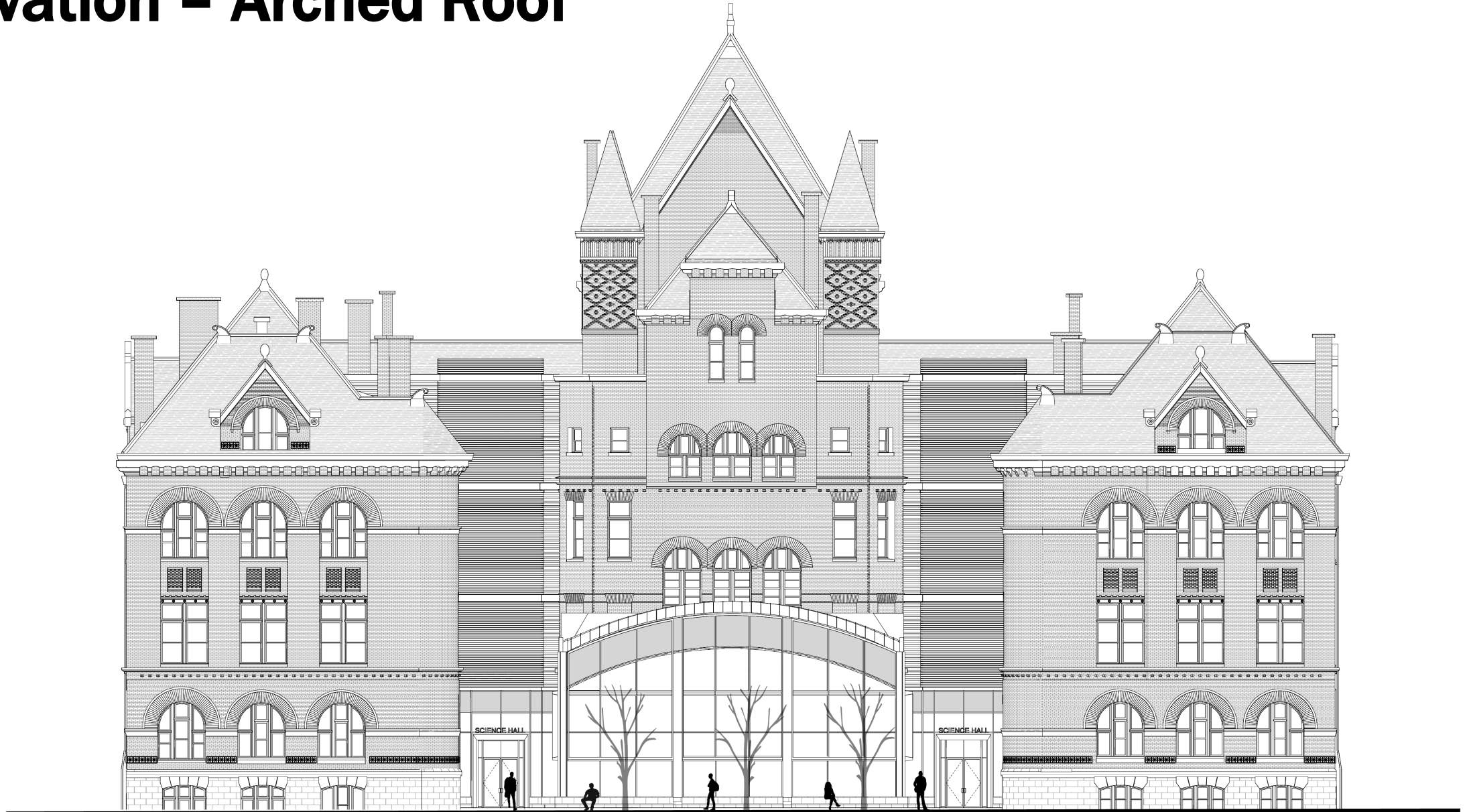
Site Plan



Elevation – Flat Roof



Elevation – Arched Roof

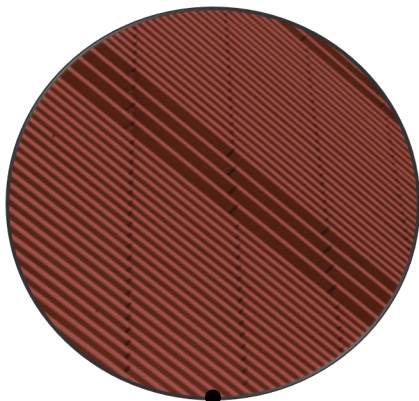


Material Axon

Curtain Wall
Solar Fins



Terracotta
Rainscreen



PV Panels
(<1%)



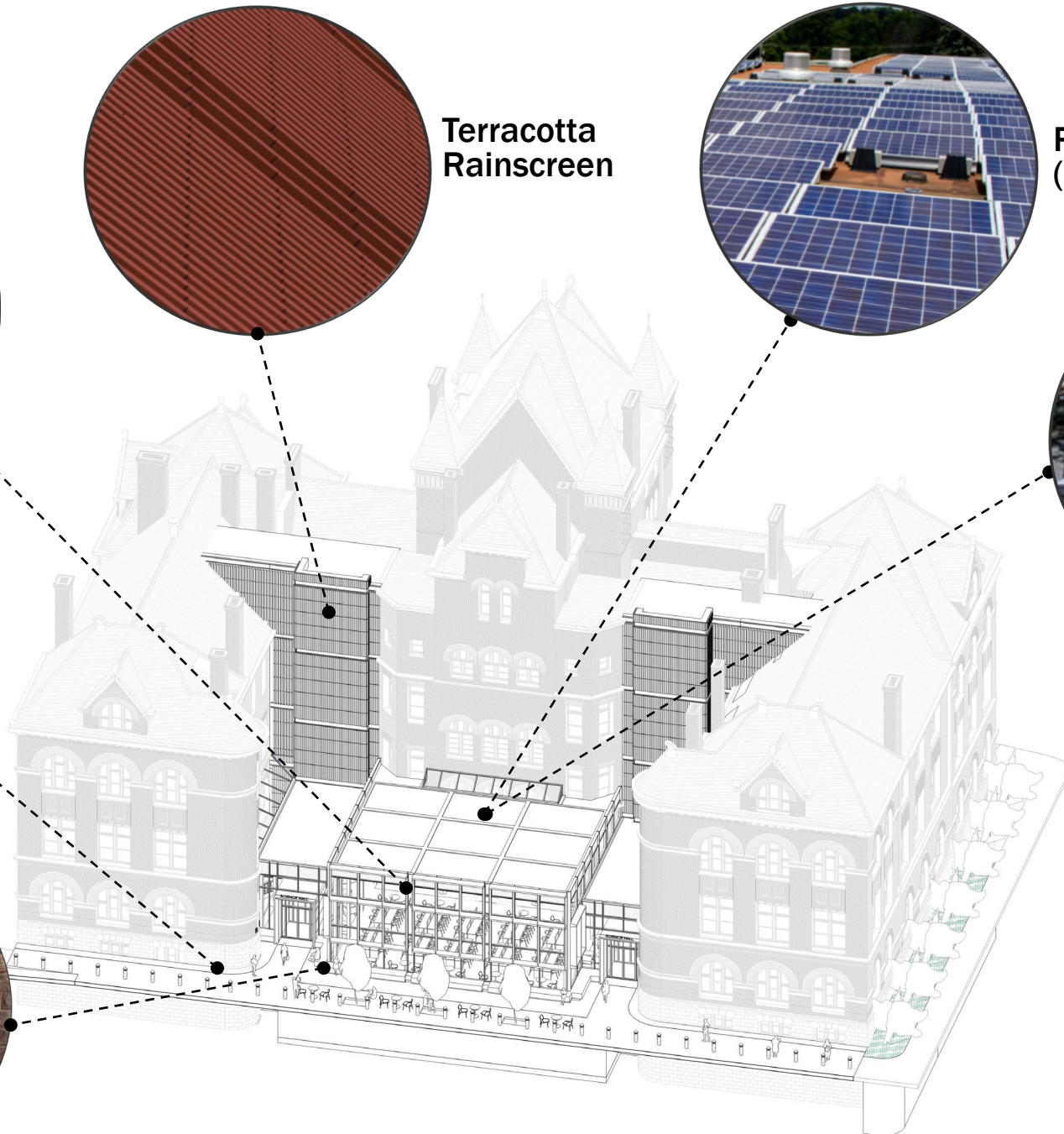
Green Roof



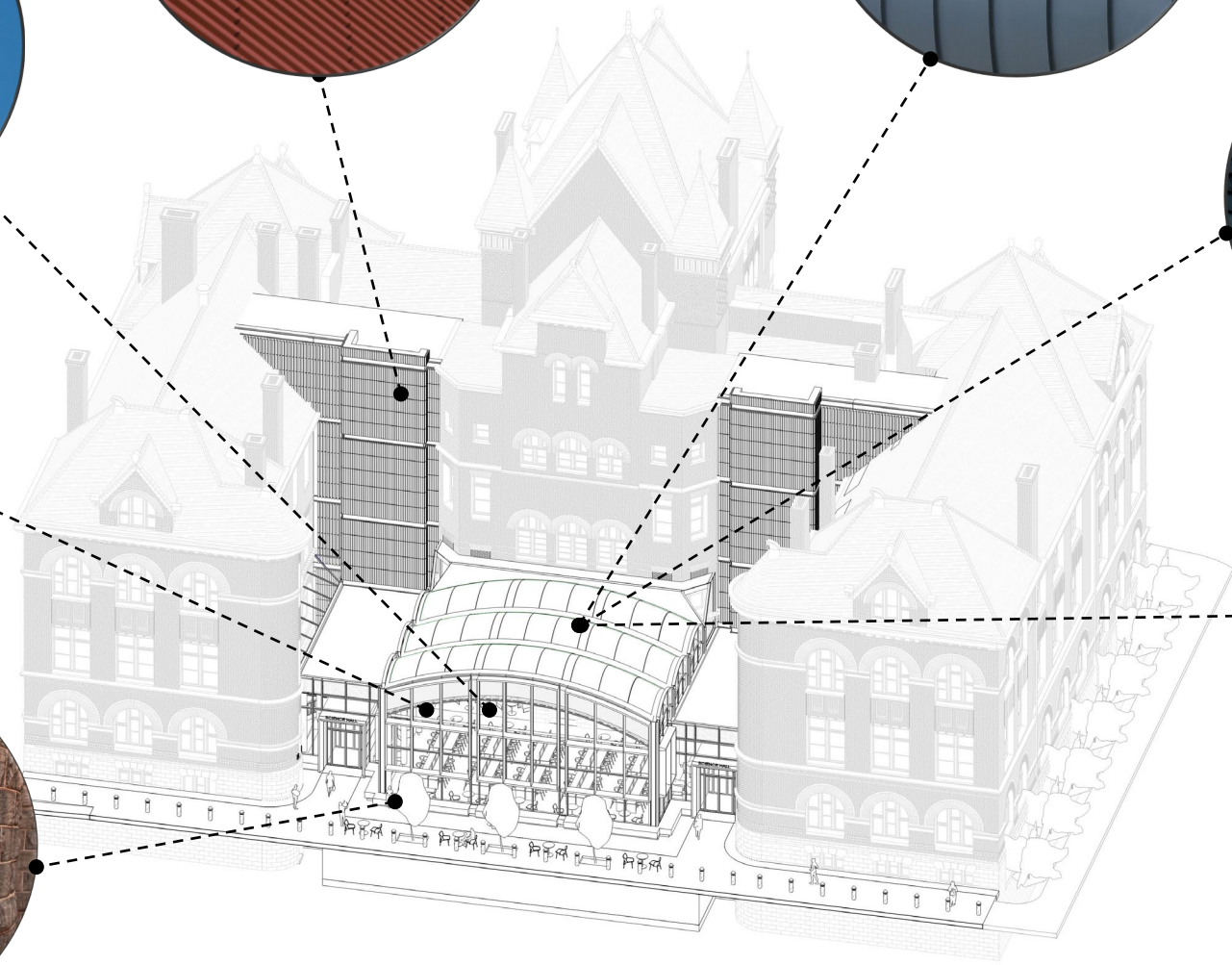
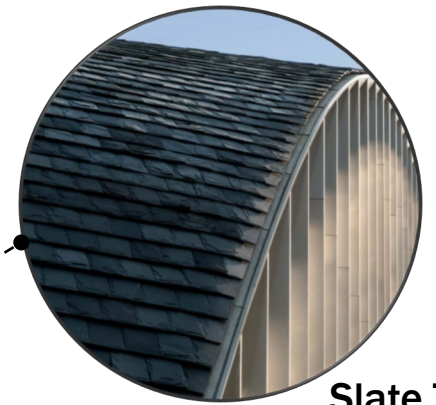
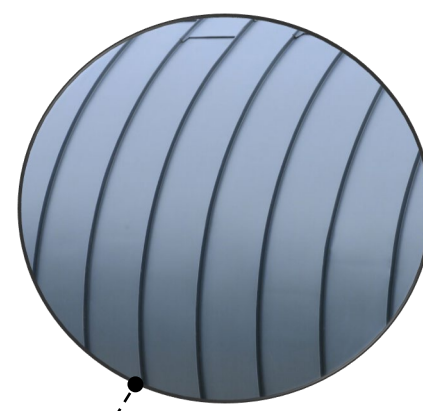
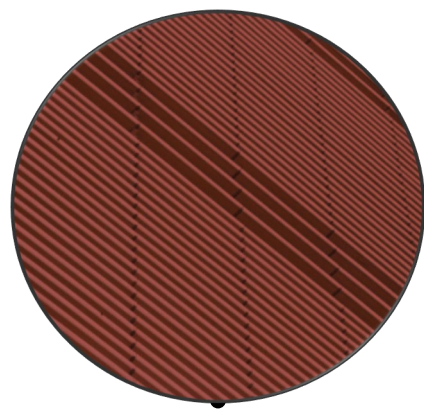
Brick Band



Stone Base



Material Axon





Exterior View 1 – Flat Scheme



Exterior View 1 – Arched Scheme



Interior View 1 – Flat Scheme



Interior View 1 Arched Scheme



Exterior View 2 – Flat Scheme



Exterior View 2 – Arched Scheme



Overall Schedule

UW SCIENCE HALL PHASE 1 InSite Proposed Overall Schedule	
Pre-Design Submission	Date
Kickoff Meeting	September 23, 2024
Workshop #1 (Programming)	October 21, 2024
Workshop #2 (Exteriors, Site, Custodial, MEP)	November 11, 2024
Donor Package	November 28, 2024
Workshop #3 (Programming, Interiors Start)	December 2, 2024
Concept Design Report	January 13, 2025
Plans/Specs to Cost Estimator	
End of Concept Design Phase	January 31, 2025
Schematic Design Submission	
DRB/WHS Presentation Submission	February 4, 2025
DRB Meeting	February 18, 2025
Workshop #1	March 6, 2025
Fire Marshall Meeting	Mid-March
Exterior Envelope Detail Survey	March 24-28, 2025
Workshop #2	April 1, 2025
Cost Estimate Plans to Cost Estimator	April 4, 2025
DAT/JCAC Meetings	Early April
Workshop #3	April 15, 2025
DRB #2 Meeting	April
Schematic Design Documents	April 25, 2025

WE ARE
HERE →

UW SCIENCE HALL PHASE 2 InSite Proposed Overall Schedule	
Design Process	Date
Kickoff Meeting	May 2025
Board of Regents Approval	July 2025
Design Development (50%) Drawings	October 2025
Construction Document (95%) Drawings	May 2026
Construction	
Bid Documents Posted	July 2026
Bid Opening/Abatement Start	September 2026
Construction Start	February 2027
Substantial Completion	February 2029