

**APPLICATION FOR
URBAN DESIGN COMMISSION
REVIEW AND APPROVAL**

AGENDA ITEM # _____

Project # _____

| | |
|-----------------------------------|---|
| DATE SUBMITTED: <u>09.24.10</u> | <input checked="" type="radio"/> Informational Presentation |
| UDC MEETING DATE: <u>09.29.10</u> | <input type="checkbox"/> Initial Approval and/or Recommendation |
| | <input type="checkbox"/> Final Approval and/or Recommendation |

PROJECT ADDRESS: 101 East Wilson Street

ALDERMANIC DISTRICT: 6

OWNER/DEVELOPER (Partners and/or Principals) ARCHITECT/DESIGNER/OR AGENT:
State of Wisconsin Eppstein Uhen Architects
Department of Transportation
Carrie Cooper, Project Manager

CONTACT PERSON: Steve Holzhauer, AIA
Address: Eppstein Uhen Architects
222 W. Washington Ave., Suite 650 | Madison, WI 53703
Phone: 608.442.6688
Fax: 608.442.6680
E-mail address: steveh@eua.com

TYPE OF PROJECT:

(See Section A for:)

- Planned Unit Development (PUD)
 General Development Plan (GDP)
 Specific Implementation Plan (SIP)
 Planned Community Development (PCD)
 General Development Plan (GDP)
 Specific Implementation Plan (SIP)
 Planned Residential Development (PRD)
 New Construction or Exterior Remodeling in an Urban Design District * (A public hearing is required as well as a fee)
 School, Public Building or Space (Fee may be required)
 New Construction or Addition to or Remodeling of a Retail, Hotel or Motel Building Exceeding 40,000 Sq. Ft.
 Planned Commercial Site

(See Section B for:)

- New Construction or Exterior Remodeling in C4 District (Fee required)

(See Section C for:)

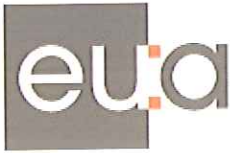
- R.P.S.M. Parking Variance (Fee required)

(See Section D for:)

- Comprehensive Design Review* (Fee required)
 Street Graphics Variance* (Fee required)
 Other _____

*Public Hearing Required (Submission Deadline 3 Weeks in Advance of Meeting Date)

Where fees are required (as noted above) they apply with the first submittal for either initial or final approval of a project.



September 24, 2010

City of Madison Urban Design Commission
210 Martin Luther King, Jr Blvd.
Madison, WI 53703

RE: Informational Presentation
Madison High Speed rail Station
101 East Wilson Street

Dear Urban Design Commission Members,

On Behalf of our client, The Wisconsin Department of Transportation (WisDOT) we have attached an application and supporting information for a Passenger Rail Station at 101 East Wilson Street.

The Wisconsin Department of Transportation (WisDOT) is proposing to construct an intercity passenger rail station at to serve as the western terminus for the intercity passenger rail service between Madison and Milwaukee. When completed, the station will allow rail access to and from downtown Madison via the Chicago-Milwaukee-Madison high-speed intercity passenger rail service. The project is being funded through a combination of Federal Railroad Administration (FRA) and possibly local funds. Average daily ridership projects for the proposed station opening in 2013 are 476,367 (on/off) with an average of 133 people boarding each train at this station. Hours of operation will be from early morning to early evening seven days a week.

The Station will be located in what is currently the first floor of the Department of Administration Building at 101 East Wilson Street. The Station will have a waiting area with 110 seats, a food service area, administrative offices, toilet rooms, 4 automatic ticket kiosks and a small service/ticket counter. The lobby will be shared with the Department of Administration which will occupy the upper floors. The boarding platform is located at the southeast east end of the building, 48' below the station level. The platform will be accessed by a bridge and circulation tower which houses 2 escalators and 2 elevators. A secondary access point is being studied from the upper level of the Monona Terrace parking structure.

Parking will be provided in the Government East parking structure. Vehicle drop-off is being planned for East Wilson Street and the upper level of the Monona Terrace Parking structure.

Sincerely,

Steve Holzhauser, AIA, LEED AP
EPPSTEIN UHEN ARCHITECTS, INC.

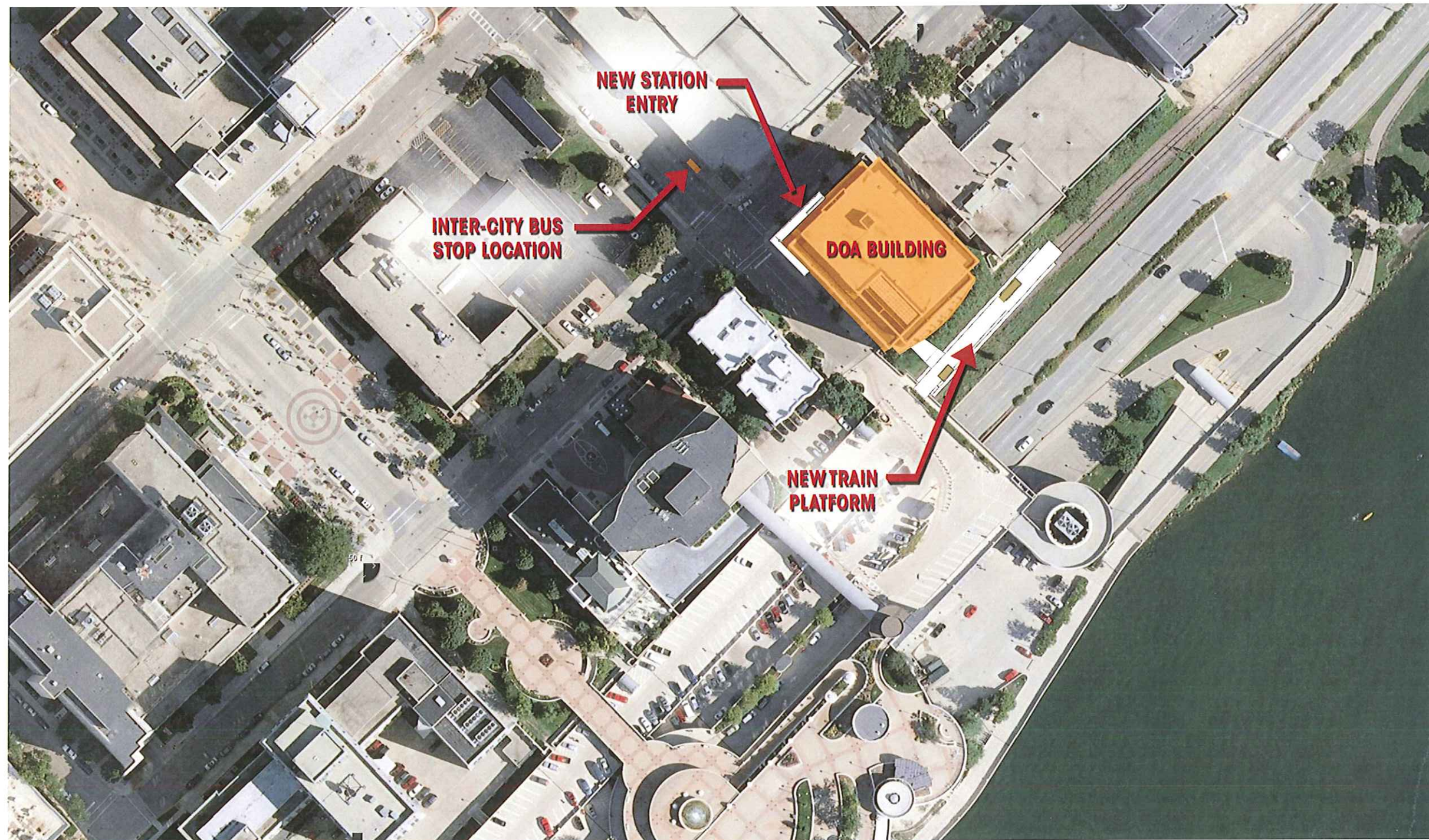
Enclosure

C: Charlie Webb, CH2MHill
Bruce Marne, EUA

333 E. Chicago St.
Milwaukee, WI 53202
414 271 5350 : main
414 271 7794 : fax

222 W. Washington Ave.
Suite 650
Madison, WI 53703
608 442 5350 : main
608 442 6680 : fax

MADISON HIGH-SPEED RAIL STATION



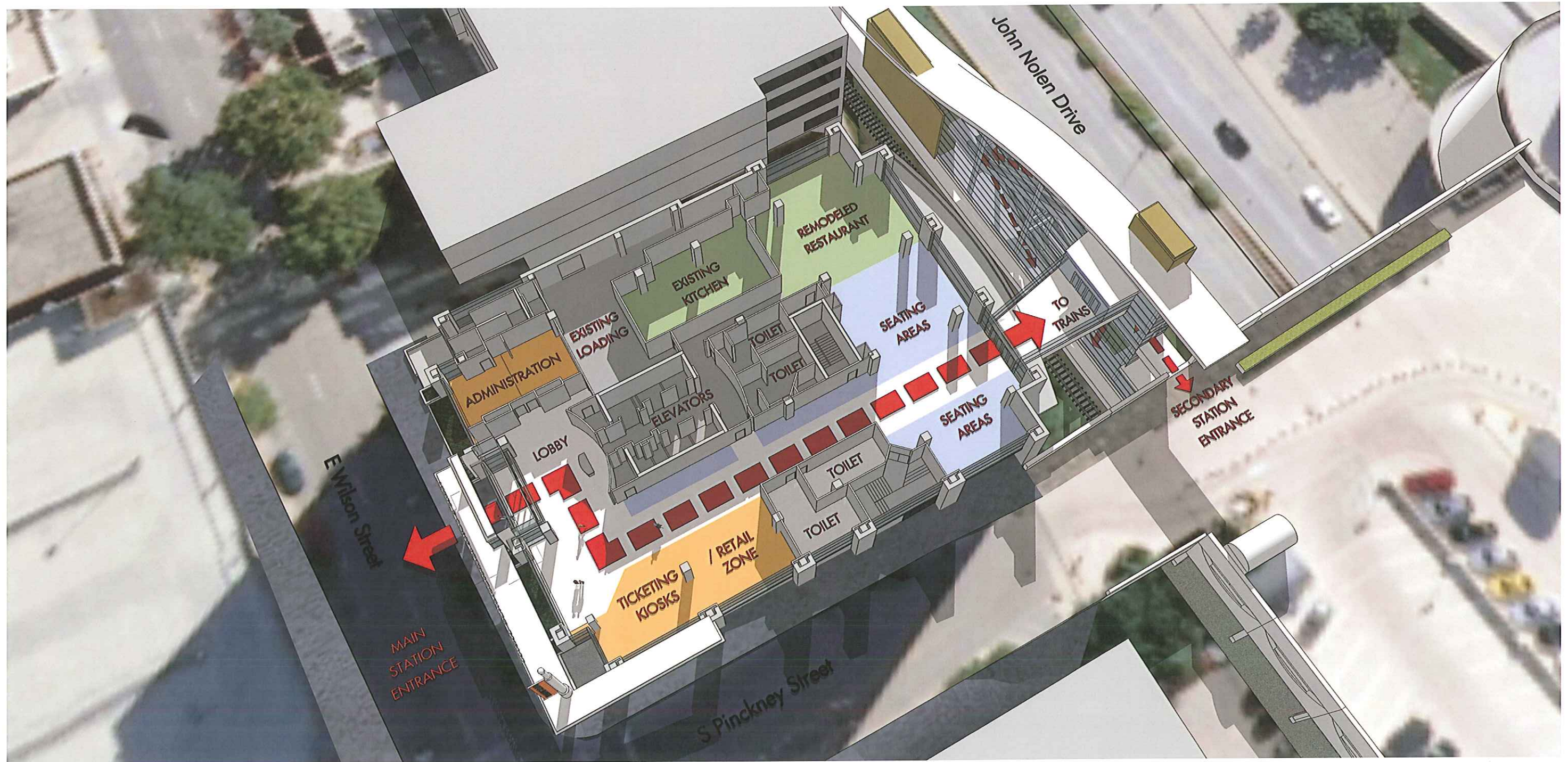
MADISON HIGH-SPEED RAIL STATION



MADISON HIGH-SPEED RAIL STATION



MADISON HIGH-SPEED RAIL STATION

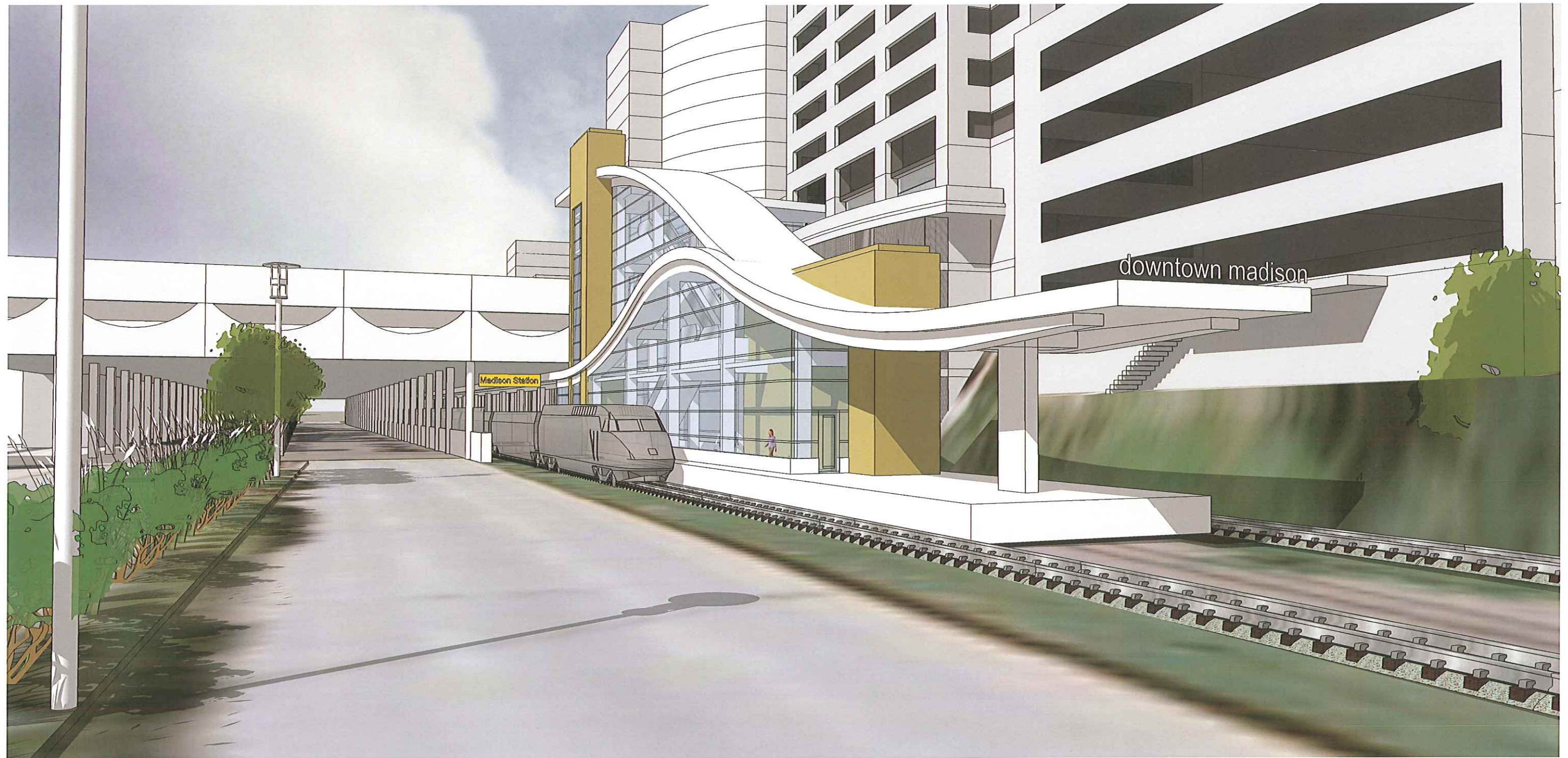


MADISON HIGH-SPEED RAIL STATION

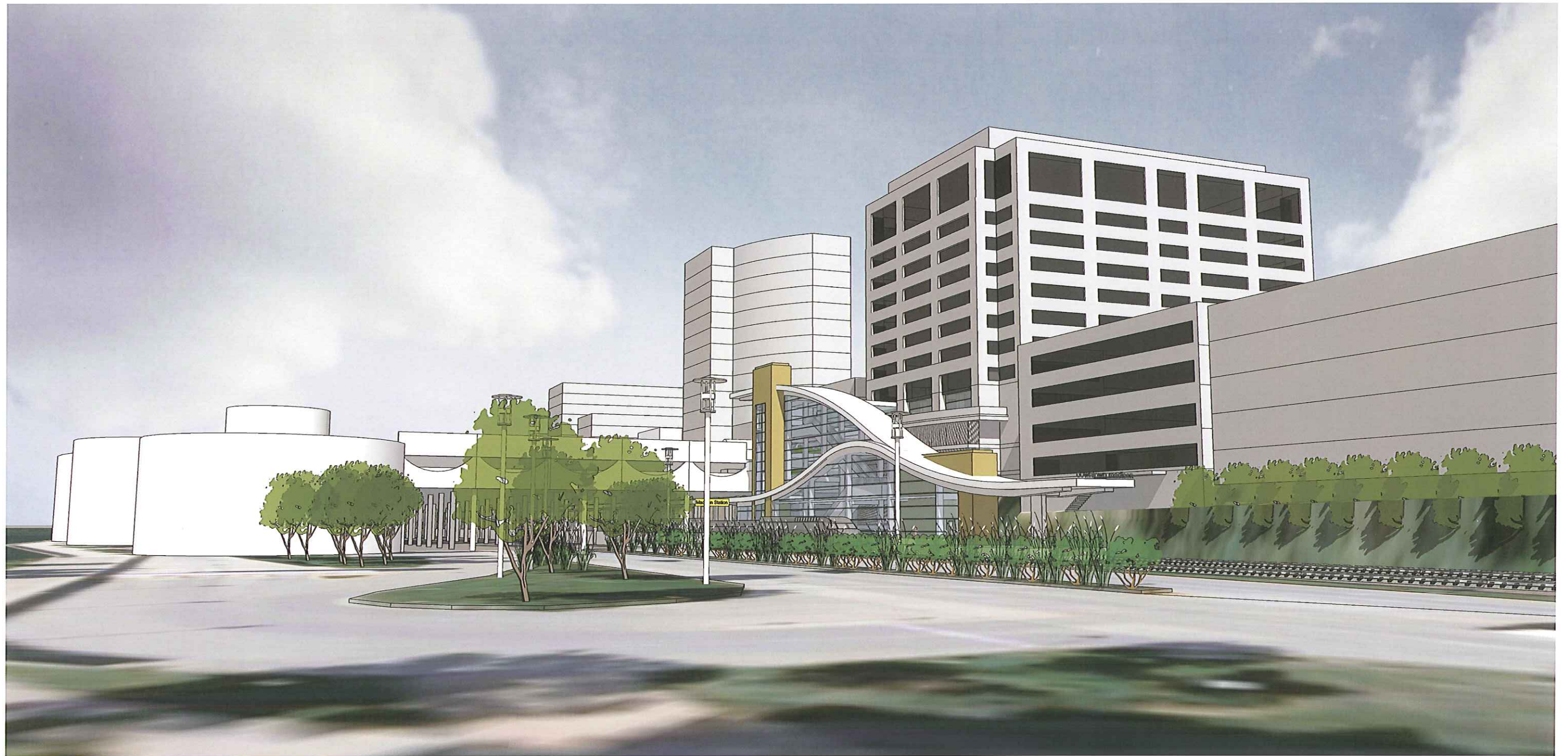


view from john nolen drive

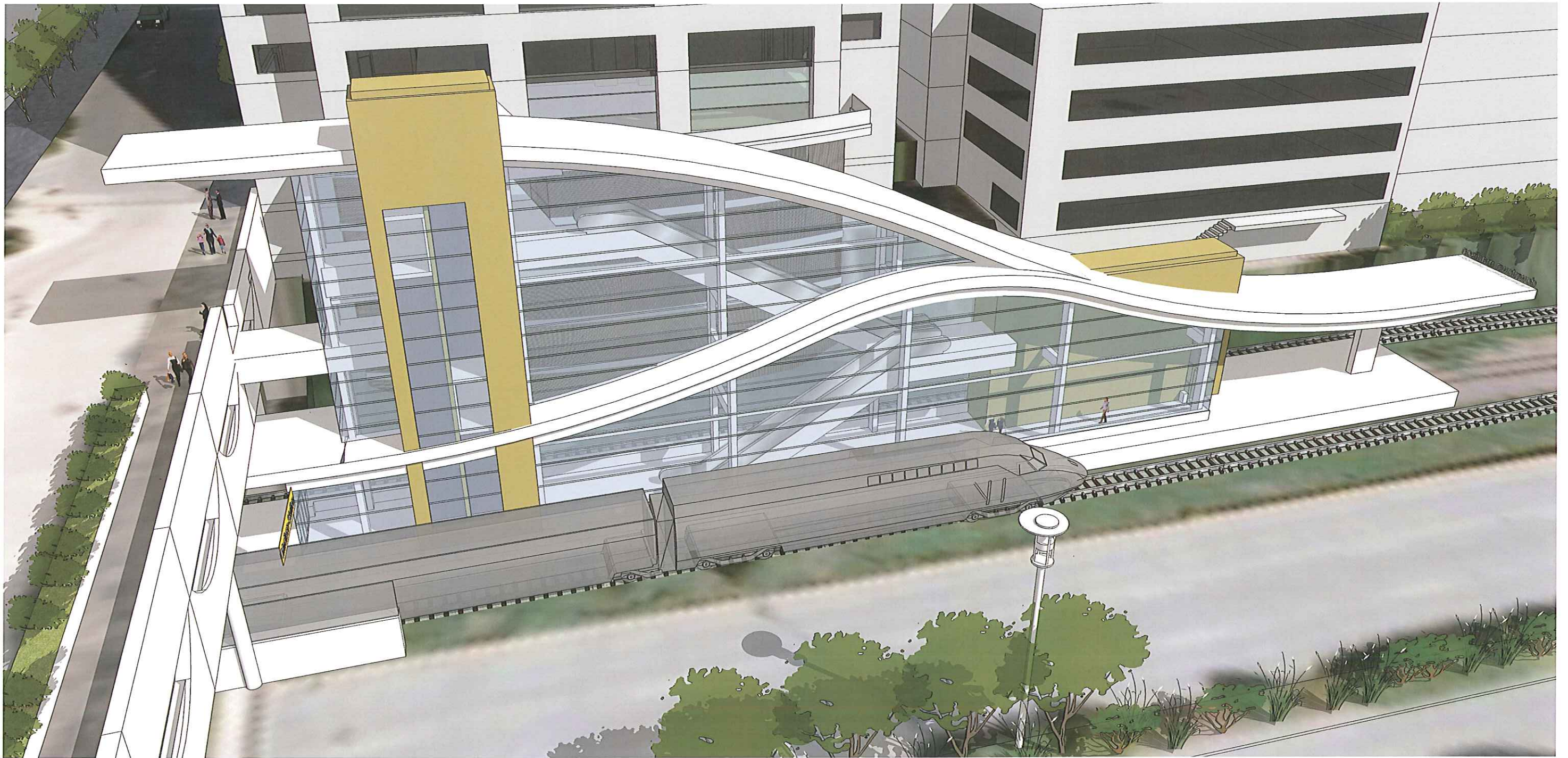
MADISON HIGH-SPEED RAIL STATION



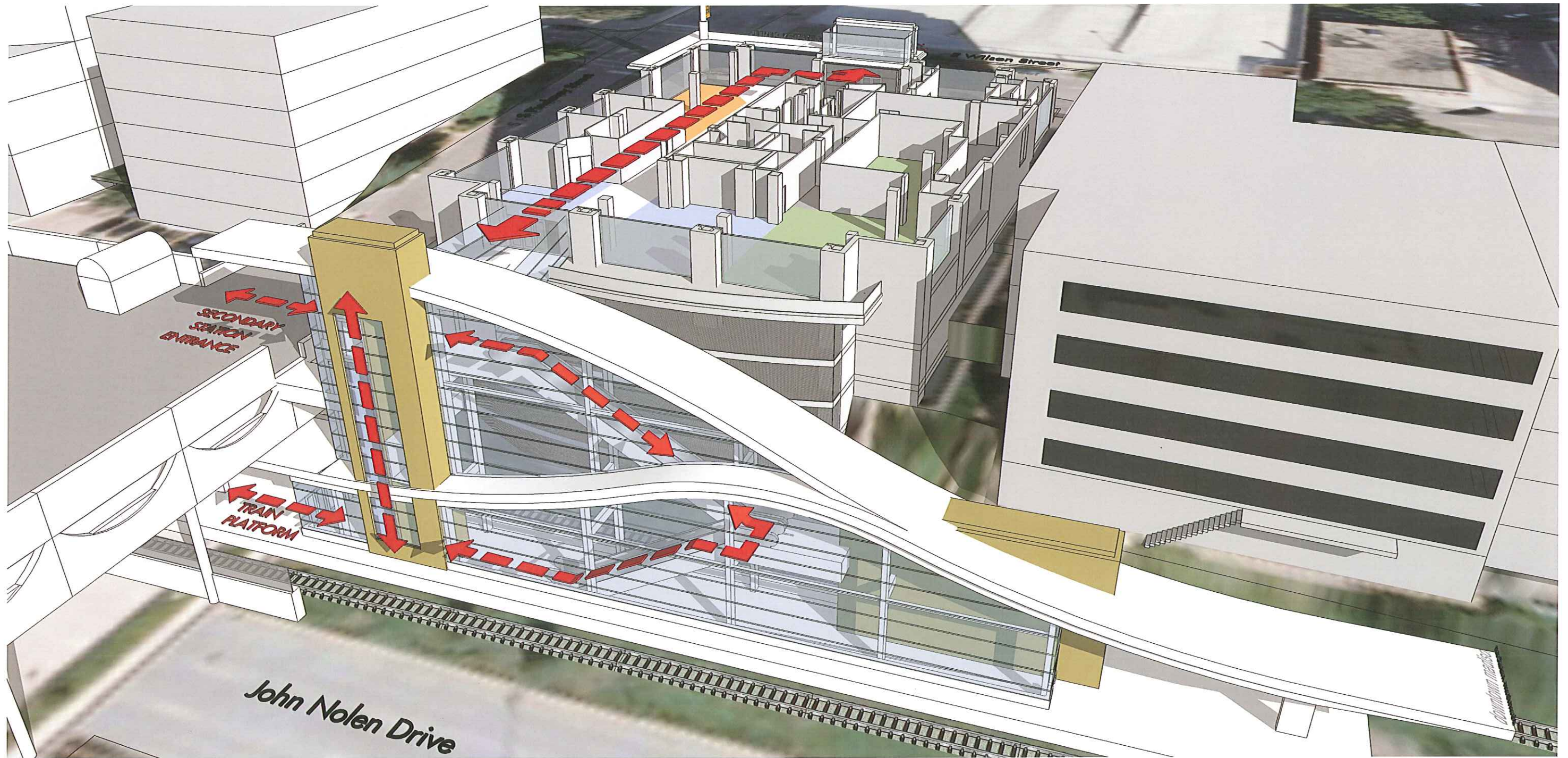
MADISON HIGH-SPEED RAIL STATION



MADISON HIGH-SPEED RAIL STATION



MADISON HIGH-SPEED RAIL STATION



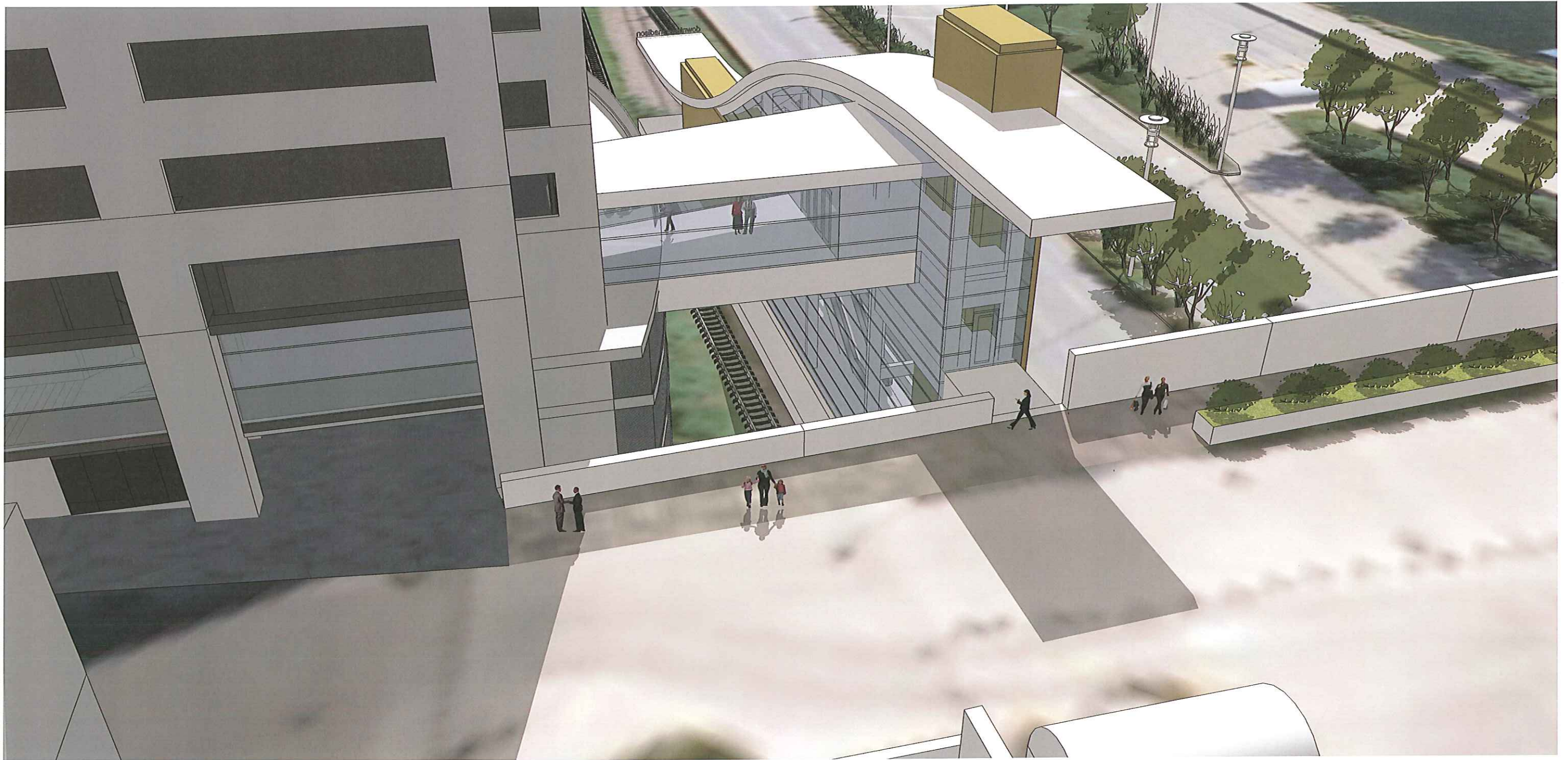
MADISON HIGH-SPEED RAIL STATION



MADISON HIGH-SPEED RAIL STATION



MADISON HIGH-SPEED RAIL STATION



MADISON HIGH-SPEED RAIL STATION



MADISON HIGH-SPEED RAIL STATION

