

**APPLICATION FOR
URBAN DESIGN COMMISSION
REVIEW AND APPROVAL**

AGENDA ITEM # _____
Project # _____

| | |
|------------------------------------|--|
| DATE SUBMITTED: <u>July 2nd</u> | Action Requested |
| UDC MEETING DATE: <u>July 11th</u> | <input type="checkbox"/> Informational Presentation |
| | <input type="checkbox"/> Initial Approval and/or Recommendation |
| | <input checked="" type="checkbox"/> Final Approval and/or Recommendation |

PROJECT ADDRESS: 919 E. MAIN

ALDERMANIC DISTRICT: 6th

OWNER/DEVELOPER (Partners and/or Principals) ARCHITECT/DESIGNER/OR AGENT:
Madison Water Utilities Bray associates architects
119 E. OLIN 212 e. Washington Ave
Madison, WI Madison, WI 53703

CONTACT PERSON: Brian Reddeman
Address: 212 e. Washington
Madison, WI 53703
Phone: 608.441.2575
Fax: 608.441.2580
E-mail address: breddeman@brayarch.com

TYPE OF PROJECT:

(See Section A for:)

- Planned Unit Development (PUD)
 - General Development Plan (GDP)
 - Specific Implementation Plan (SIP)
- Planned Community Development (PCD)
 - General Development Plan (GDP)
 - Specific Implementation Plan (SIP)
- Planned Residential Development (PRD)
- New Construction or Exterior Remodeling in an Urban Design District * (A public hearing is required as well as a fee)
- School, Public Building or Space (Fee may be required)
- New Construction or Addition to or Remodeling of a Retail, Hotel or Motel Building Exceeding 40,000 Sq. Ft.
- Planned Commercial Site

(See Section B for:)

- New Construction or Exterior Remodeling in C4 District (Fee required)

(See Section C for:)

- R.P.S.M. Parking Variance (Fee required)

(See Section D for:)

- Comprehensive Design Review* (Fee required)
- Street Graphics Variance* (Fee required)
- Other _____

*Public Hearing Required (Submission Deadline 3 Weeks in Advance of Meeting Date)

Where fees are required (as noted above) they apply with the first submittal for either initial or final approval of a project.

July 2, 2007

Urban Design Commission
City of Madison
Madison Municipal Building
215 Martin Luther King Jr. Blvd.
Madison, WI 53711

LETTER OF INTENT

**RE: MADISON WATER UTILITY MATERIAL STORAGE BUILDING
PROJECT NO. 2853**

Dear Urban Design Commission Members:

Bray Associates Architects submits the following application to the Urban Design Commission for the proposed City of Madison Water Utilities Material Storage Building to be located at 919 E. Main Street. The proposed building is intended to house and store materials used by the City of Madison Water Utilities Department in lieu of the vacant lot they currently use adjacent to the Water Utilities Vehicle Storage Building.

Access to the site will be thru an existing curb cut located off of Main Street. The building area is projected to be approximately 4,000 sf, comprised primarily of poured concrete walls with a clerestory feature to provide increased natural light inside the building and improve the aesthetics of the exterior portions of the building.

Sincerely,



Brian Reddeman
Project Team Leader

BRAY ASSOCIATES ARCHITECTS, INC

212 E. Washington Ave. Suite 101

Madison, WI 53703

Phone 608.441.2575

Fax 608.441.2580

breddeman@brayarch.com

Classic™

Ameristar's spear-pointed picket extends through the ForeRunner™ top rail to form the attractive traditional Classic™ design. The picket spear is formed with a 3/8" diameter rounded tip rather than a sharp point.



Majestic™

The Majestic™ design is formed to a configuration of contemporary simplicity that maintains a stately look of dignity.



LiteWall™ Wall and Vertical Glazing Systems



Industrial Buildings

Dualwall® panels featuring uninterrupted length and an aluminum batten with an accent color can support interesting architectural designs.



ID 4282 – Puente Learning Center, Los Angeles, CA
Contractor: Swinerton & Walberg, Los Angeles CA
Custom sound reduction LiteWall providing high acoustical properties of nominal 40 STC for site near LAX airport.



ID 9672 - 818 Power Station, Los Angeles CA
Architect: Rockefeller Hricak Architects, Venice CA
Ice White Pentaglas® 16 LiteWall was used over a vertical shaft on this industrial retrofit project. Free vertical spans up to 14 ft.

ID 663 – Stevenson High School, Lincolnshire, IL
Architects: O.W. P&P
Contractor: Gilbane Building Company

The 8000 sq. ft. LiteWall® system adds significantly to the appearance of the high school, both inside and outside, while making practical use of natural light. A set of continuous clerestory windows were set around the perimeter of the field house and pool area. CPI's translucent panels provide quality light while reducing glare for athletic activities.



ID 4368 – Green YMCA, Greensburg, OH
Architect: GPD Associates, Akron, OH
Contractor: Wely Building Corporation, Akron, OH
26 Self Supporting Wall Light units, 250 linear feet by up to 25' high, glazed in 3" Quadwall®.
Glazing Colors: 8mm White 60 over 8mm White 60.



ID 3783 – Springfield City Service Complex, Springfield, OH
Architect: Kevin Porter Assoc., Dayton, OH
Contractor: Monarch Construction Co., Cincinnati, OH
One 10' x 890' Wall Light and two 7' x 118' Wall Lights, both glazed in self supporting 3" Quadwall®.
Glazing Colors: 8mm White 60 over 8mm White 60.

New! Improved CPI Litewall™ Systems!

- Pentaglas® honeycomb panels provide superior light quality and aesthetic appeal
- Honeycomb structure provides internal flexibility to absorb deflection, thermal expansion and stresses in all directions
- Elegant matte finish glazing panels
- Internal Aluminum H connectors for improved rigidity and appearance

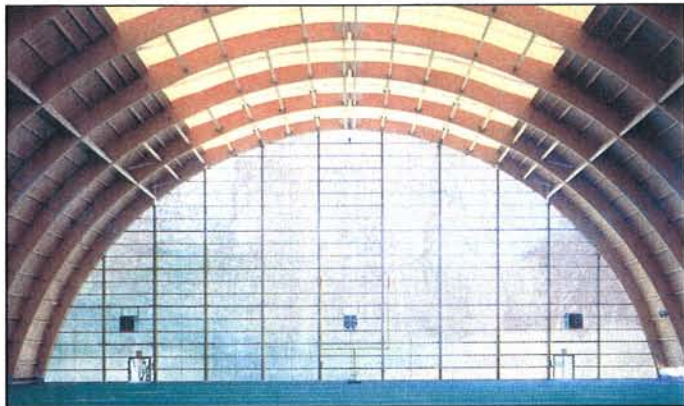


ID 1043 – Ennis Intermediate School, TX
Claycomb Associates Architects, Inc.

LiteWall® 3" system delivers natural light to the school's field house and cafeteria area, and provides a pleasant glowing appearance at night. Quadwall® panels are white over white with an artificial internal grid.

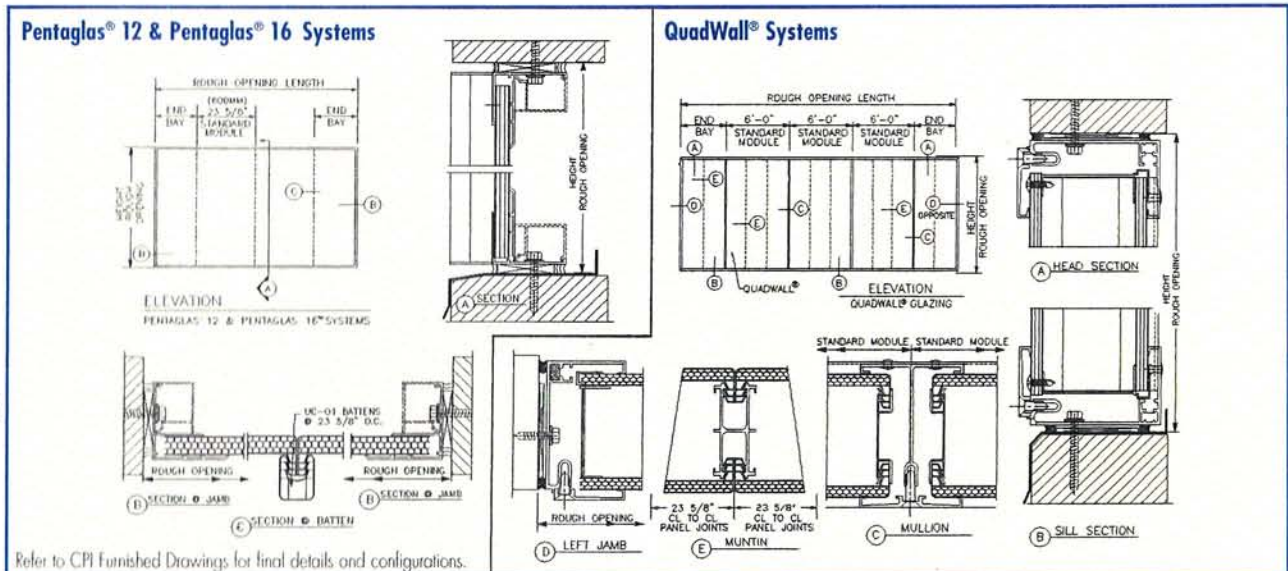
ID 1309 – Chicago Bears Football Training Facility, IL
Wood & Zapata, Inc.

Clear Dualwall® conveys maximum natural light with no glare to disturb the NFL players during training on their indoor football field. While other translucent materials "white" everything out, these Dualwall® panels provide a level of visibility for exterior images such as clouds or trees. The training facility uses 30,000 sq. ft. of panels, 82' high by 200' long, skinned over a wood structure.



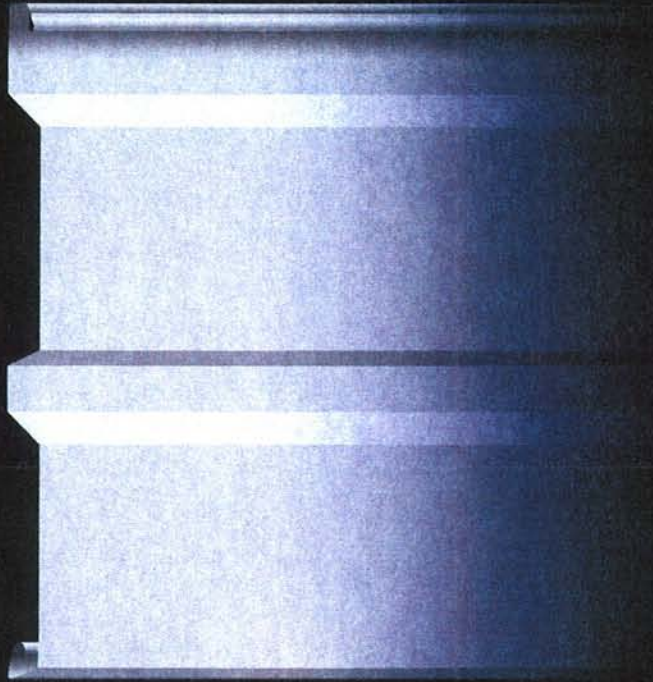
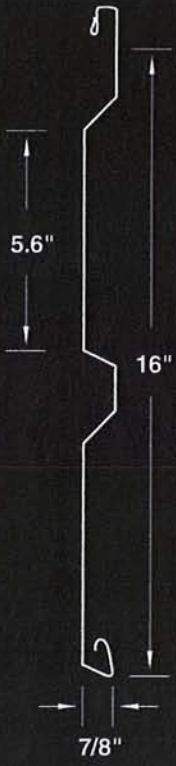
LiteWall™ Concept Details

The CPI patented, standing seam, dry-glazed Pentaglas® systems are available in a variety of configurations, panelized or knocked down, suitable for different requirements and applications as illustrated below:

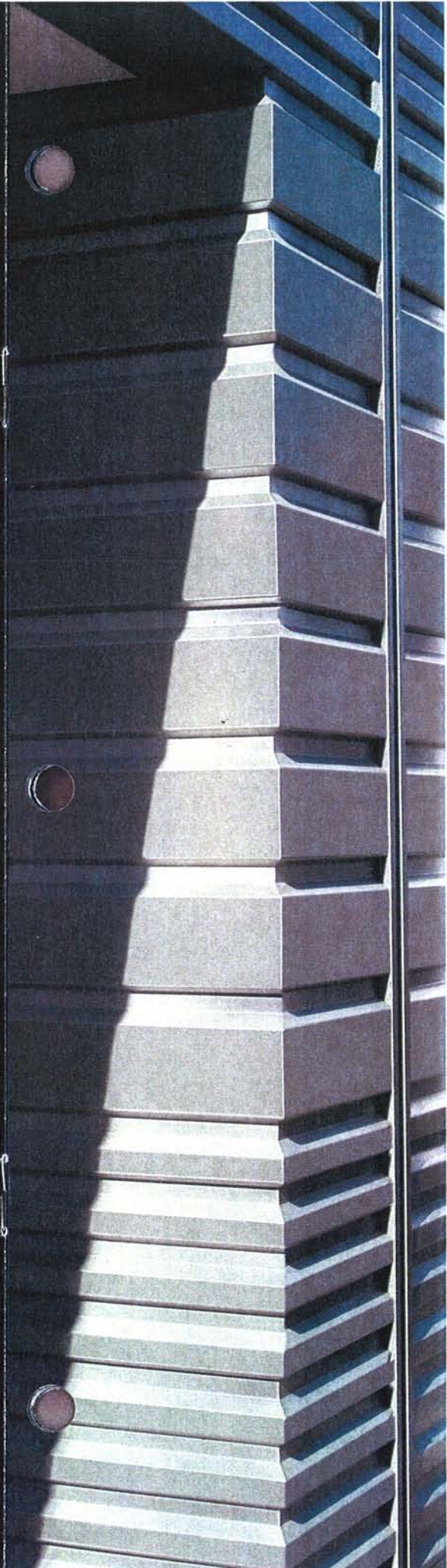
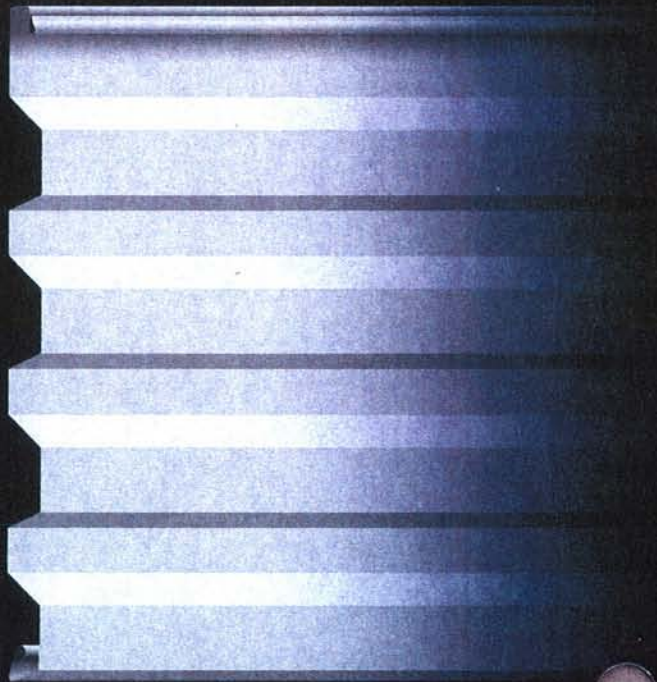


Excellence in Translucent Daylighting
 SKYLIGHTS • CANOPIES AND WALKWAY COVERS • RETROFIT • WALLLIGHTS • POOL ENCLOSURES

CS-620



CS-660



CENTRIA COLORS

CENTRIA COLORS range from the most subtle earth tones to an array of vivid, vibrant brights. The information provided in this brochure will help you choose the color and finish system that best matches your requirements.

Cost of CENTRIA coatings may vary depending on specific color and finish selection.

PRISMATIC™ SERIES COLORS

The PRISMATIC Series is available in a wide range of colors and finish systems including:

Fluorofinish® (PVDF) is a durable polyvinylidene coating system containing Kynar 500®/Hylar 5000® resins. Fluorofinish is a good choice for architectural applications.

Duragard® and Duragard Plus Coating Systems are premium, high build architectural coatings which provide the absolute best in color retention and fade resistance. A Kynar 500/Hylar 5000-based clearcoat provides additional protection for Duragard Plus.

Versacor® Plus Coating System is a premium, high build, multi-layer corrosion-resistant coating for heavy industrial applications where corrosion resistance is more important than color retention or fade resistance. Not available with Formawall® Dimension Series® architectural panel system.

DURACAST® COATING SYSTEM

Duracast Coating System is a durable, factory-applied natural aggregate matrix that provides the look and texture of precast or stone. Available exclusively for Versawall® and Formawall® Dimension Series® wall system, Duracast comes in Off-White, Lee Ivory, Limestone, Surrey Beige, Light Seawolf, Light Gray, Dove Gray and Slate Gray. Duracast may also be ordered in custom pastel earthtones.

See examples of Duracast texture on the back cover of this brochure.

Custom Color Matching

If you have a color requirement that does not appear here, contact CENTRIA for a custom color match. CENTRIA is equipped with the latest in color matching technology, and our partnership with Valspar, one of the world's leading coatings manufacturers, enables us to provide fast turnaround on even the most unique or unusual color match.

179 Regal White **C**

996 Crushed Ice

993 Off-White **CS†**

995 Cambridge White

310 Bone White **C**

994 Colonial White

5012 Marble

992 Lee Ivory **CS†**

133 Sandstone **CS**

1760 Limestone **CS†**

142 Surrey Beige **CS†**

9910 Light Seawolf†

9911 Pebble

997 Prism Yellow

5444 Aged Copper **CS**

977 Moss

9933 Cypress Olive

978 Hunter Green

9932 Hartford Green

177 Slate Blue

9926 Arabian Blue

9923 Granite

9917 Light Gray **CS†**

971 Chromium Gray **CS**

9918 Dove Gray†

9919 Fashion Gray

181 Slate Gray†

9922 Steel Gray

9921 Charcoal Gray

9914 Midnight Bronze

154 Dark Bronze

9912 Sage Brown

1243 Mocha

9937 Mauve

156 Colonial Red **CS**

999 Aspen Gold

183 Evergreen

974 Teal Blue*

9928 Cherokee Blue*

200 Deep Blue Sea

9930 Night Horizon*

9916 Rich Black



Consult CENTRIA for reflectance and emittance values for specific cool roofing colors.

C ENERGY STAR® qualified cool roofing color for low or steep slope applications

CS ENERGY STAR qualified cool roofing color for steep slope applications

† Standard Duracast finish color. Consult CENTRIA for custom colors.

* Consult CENTRIA for availability and pricing of these colors in Duragard or Duragard Plus.

The Genuine. The Original.



[About our Company](#)

[Residential Products](#)

[Commercial Products](#)

[Find a Dealer](#)

- [Request Info](#)
- [Drawings/Specs](#)
- [Contact Us](#)
- [Email Page](#)
- [Print Page](#)

Home >> Commercial Products >> Rolling Service >> 610

Rolling Service 610



The 610 Series and Stormtite™ 620 Series are suitable for heavy-duty commercial applications. The 620 Series doors are similar to the 610 Series, but are furnished with weatherstripping on the

exterior side of the guides, on the bottom bar and in the hood baffle. Weatherseals for the interior side of guides or hood lintel are available as options. The Stormtite door system features a steel curtain with flat-profile slats. Aluminum and stainless steel slats are optionally available.

Standard Features At a Glance

| | |
|----------------------|---|
| Max. standard width | 30' (9144 mm) |
| Max. standard height | 28' (8534 mm) |
| Curtain | 22 ga. galvanized steel up to 18'4" (5588 mm) width 20 ga. galvanized steel up to 25'4" (7722 mm) width 18 ga. galvanized steel up to 30' (9144 mm) width |
| Slat profile | Curved, type C-187 (610 Series) Flat, type F-265 (620 Series) |
| Finish | Gray or tan |
| Hood | 24 ga. galvanized steel |
| Windload | 20 psf |
| Standard mounting | Face of wall |
| Operation | Manual push-up up to 84 sq. ft. (7804 sq.mm) or 12' x 7' (3658 mm x 2134 mm) Chain hoist over 84 sq. ft. (7804 sq.mm) or 12' x 7' (3658 mm x 2134 mm) |
| Standard springs | 20,000 cycle |
| Weatherseals | Bottom bar astragal (Series 610/620) |

| | |
|------------------------|---|
| Guides and hood baffle | (Series 620) |
| Guides | Primed steel |
| Bottom bar | Extruded aluminum with weatherseal to 15'4" (4674mm) Back-to-back steel angles with weatherseal 15'4" (4674 mm) |
| Lock | Interior slide bolt on push-up Chain keepers on chain hoist |
| Warranty | 15-month limited |

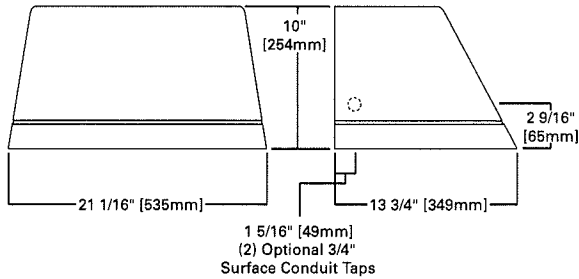
Options

- Electric operator
- Bottom sensing edge
- Crank operation
- Between-jambs mounting
- Stainless steel or aluminum slats
- High-usage package
- High-windload option
- Galvanized steel bottom bar angles
- Cylinder lock
- Pass door
- Exhaust ports
- Powder-coat paint finish in 197 standard colors, or color-matched to specification

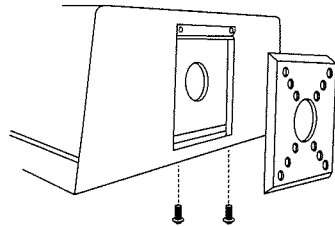
COOPER LIGHTING - LUMARK®

WALL MOUNT

DIMENSIONS



HOOK-N-LOCK MOUNTING (Mounting attachment included. J-Box not included.)

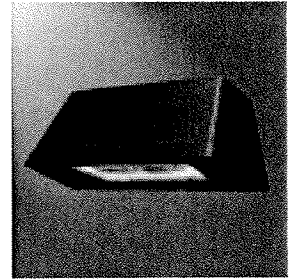


PRELIMINARY
Consult www.lumark-lighting.com
For updated specifications.

DESCRIPTION

The IMPACT Trapezoid full cutoff wall luminaire makes an ideal complement to site design. U.L. Listed and CSA Certified for wet locations in down mount applications and damp locations in up mounted applications.

Rugged construction and full cutoff classified optics provide facade and security lighting for light restricted zones surrounding schools, office complexes, apartments, and recreational facilities.



IPTM IMPACT TRAPEZOID MEDIUM

1 7 5 - 4 0 0 W

High Pressure Sodium
Metal Halide

1 1 4 - 1 7 0 W

Compact Fluorescent

FULL CUTOFF
WALL MOUNT LUMINAIRE

ORDERING INFORMATION

SAMPLE NUMBER: MHIP-TM-400-4-MT-LL

| Lamp Type ¹ | Fixture Type | Fixture Shape | Lamp Wattage ² | Distribution | Voltage ⁴ | Options & Accessories |
|--|--------------|---------------------|--|---|---|-----------------------|
| MP=Pulse Start Metal Halide MH=Metal Halide HP=High Pressure Sodium PL=Compact Fluorescent | IP=Impact | TM=Trapezoid Medium | HID 175=175W 200=200W 250=250W 320=320W 350=350W 400=400W Compact Fluorescent 114=(2) 57W 121=(1) 120W ³ 122=(2) 60W 126=(3) 42W 140=(2) 70W 170=(2) 85W | HID 3=Type III 4=Type IV Compact Fluorescent 2=Type II ⁴ 4=Type IV ⁵ | 120V 208V 240V 277V 347V 480V DT=Dual-Tap ⁷ MT=Multi-Tap ⁸ TT=Triple-Tap ⁹ E=Electronic Ballast ¹⁰ | (See Below) |

- Two-piece die-cast aluminum housing
- Rigid steel mounting attachment anchored directly to wall over 4" J-Box with "Hook-N-Lock" mechanism for quick installation

Options¹¹

- F1=Single Fuse (120, 277 or 347V)—Must Specify Voltage
- F2=Double Fused (208 or 240V)—Must Specify Voltage
- TR=Tamper Resistant Screw (Door and Mounting Plate)
- PE=Button Photocontrol (Must Specify Voltage)
- UPL10=10% Uplight
- UPL50=50% Uplight
- LL=Lamp Included (Must Specify Wattage on PL)¹²
- BK=Black
- WH=White
- SC=Surface Conduit Taps (2) 3/4" NPSM
- Q=Quartz Restrike T4 Lamp^{13, 14, 15, 16, 17}
- EM=Emergency Quartz Restrike T4 Lamp With Time Delay Relay^{12, 14, 15, 16, 17}
- EMCWB-XXX=CFL Cold Weather Emergency Battery Pack (Must Specify 120 or 277V)^{17, 18}
- CF/EM-XXX=Emergency Battery Pack (Must Specify 120 or 277V)^{17, 19}
- QMR=Quartz Restrike MR16 Lamp^{16, 18, 17, 20}
- EMMR=Emergency Quartz Restrike MR16 Lamp With Time Delay Relay^{15, 14, 17, 20}
- EM/SC=Emergency Separate Circuit T4 Lamp^{14, 14, 21}
- EM/SC/MR=Emergency Separate Circuit MR16 Lamp^{20, 21}
- EM/SC/12V=Emergency Separate Circuit (12V)²²
- 2QMR=(2) Quartz Restrike MR16 Lamps^{16, 18, 17, 20}
- 2EMMR=(2) Emergency Quartz Restrike MR16 Lamps With Time Delay Relay^{15, 14, 17, 20}
- 2EM/SC/MR=(2) Emergency Separate Circuit MR16 Lamps^{20, 21}
- 2EM/SC/12V=(2) Emergency Separate Circuit MR16 Lamps (12V)²²
- 2QMR/SC=(1) Quartz Restrike MR16 Lamp and (1) Emergency Separate Circuit MR16 Lamp^{16, 14, 17, 20, 21}
- 2EMMR/SC=(1) Emergency Quartz Restrike MR16 Lamp with Time Delay Relay and (1) Emergency Separate Circuit MR16 Lamp^{15, 14, 17, 20, 21}

Accessories²²

- WG/ITM=Wire Guard Trapezoid Medium (Painted Bronze)
- VS/ITM=Vandal Shield Trapezoid Medium (External Polycarbonate Shield)

| LAMP TYPE | WATTAGE |
|--------------------------|--|
| Pulse Start Metal Halide | 200, 250, 320, 350, 400W |
| Metal Halide | 175, 250, 400W |
| High Pressure Sodium | 250, 400W |
| Compact Fluorescent | (2) 57, (2) 60, (1) 120, (3) 42, (2) 70, (2) 85W |

- HID luminaires supplied with high power factor ballast with Class H insulation. Minimum starting temperatures are -40°C (-40°F) for HPS and -30°C (-22°F) for MH. Compact Fluorescent luminaires feature electronic, high efficient multi-voltage 50/60Hz ballast with -18°C (0°F) minimum starting

- Die-cast door features 1/8" heat- and impact-resistant clear tempered glass lens. Hinged removable door secured in place via two (2) captive fasteners
- Durable polyester powder coat finish. Standard color is bronze. Other finish colors available

- U.L. listed for wet locations. CSA certified
- Approximate net weight: 42 lbs. (19 kgs.)

NOTES: 1 Lamp type not available in all wattages. See wattage table. 2 All HID Metal Halide lamps are mogul-base, reduced envelope ED-28 except 200W Pulse Start Metal Halide is T15, all enclosed rated. All HID High Pressure Sodium lamps are mogul-base ED-18. 3 Available in Type IV distribution only. Used with forward throw optic. 4 Not available with (1) 120W lamp. 5 Available with (1) 120W Compact Fluorescent lamp only. 6 Products also available in non-US voltages and 50Hz for international markets. Consult your Cooper Lighting Representative for availability and ordering information. 7 Dual-Tap ballast are 120/277V wired 277V. 8 Multi-Tap ballast are 120/208/240/277V wired 277V. 9 Triple-Tap ballast are 120/277/347V wired 347V. 10 Supplied with 120V through 277V 50/60Hz for Compact Fluorescent. 11 Add as suffix in the order shown. 12 Lamp is Cooper designated product based on luminaire requirements. Specified lamps must be ordered as a separate line item. 13 The power might need to cycle and allow HID lamp to cool in warm climates. 14 Use with T4 double contact DC bayonet base, 100W maximum, 120V halogen lamp by others. 15 Lamps wired to quartz restrike relay. 16 Not available with CFL. 17 Not available with uplight. 18 CF lamps only, rated for minimum temperature of 0°F (-18°C), 70W CFL maximum. 19 CF lamps only, rated for minimum temperature of 32°F (0°C), 70W CFL maximum. 20 For use with MR16, GU10 base, 50W maximum, 120V halogen lamp by others. 21 Leads run out back for connection to auxiliary 120V circuit. 22 Supplied with 12V Bi-pin socket for connection to emergency battery pack (supplied by others). For use with MR16, GU5.3 base, 35W maximum, 12V halogen lamp by others. 23 Order separately. 24 Consult your Cooper Lighting Representative for availability and ordering information. 25 Specifications and dimensions subject to change without notice.

COOPER LIGHTING - LUMARK®

DESCRIPTION

The IMPACT Trapezoid cutoff wall luminaire makes an ideal complement to site design. U.L. Listed and CSA Certified for wet locations in down mount applications and damp locations in up mounted applications.

Rugged construction and full cutoff classified optics provide facade and security lighting for light restricted zones surrounding schools, office complexes, apartments, and recreational facilities.

| | | | |
|-------------|--|------|--|
| Catalog # | | Type | |
| Project | | Date | |
| Comments | | | |
| Prepared by | | | |

SPECIFICATION FEATURES

A ... Housing

The housing is a two-piece design of die-cast aluminum for precise control of tolerances and repeatability.

B ... Mounting

Gasketed and zinc plated rigid steel mounting attachment fits directly to 4" J-Box or wall with "Hook-N-Lock" mechanism for quick installation. Secured with two (2) captive corrosion resistant black oxide coated allen head set screws concealed but accessible from bottom.

C ... Optical Modules

All optical modules utilize high performance 95% reflective sheet. Type II optical module is standard.

D ... Ballast

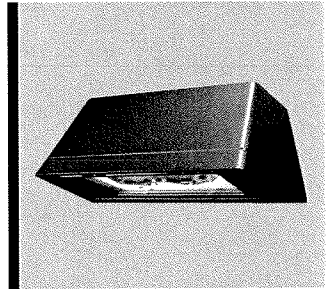
HID luminaires supplied with high power factor ballast with Class H insulation. Minimum starting temperatures are -40°C (-40°F) for HPS and -30°C (-22°F) for MH. Compact Fluorescent luminaires feature electronic universal 120-277V high efficient 50/60Hz ballast with -18°C (0°F) minimum starting.

E ... Door

Die-cast door features, 1/8" heat- and impact-resistant clear tempered glass lens mounted with internal plated steel clips and sealed with EPDM gasketing. Hinged door secured in place via two (2) captive fasteners.

F ... Finish

Durable polyester powder coat finish. Standard color is bronze. Optional white and black colors available. Other finish colors available. Consult your Cooper Lighting Representative concerning special color requirements.

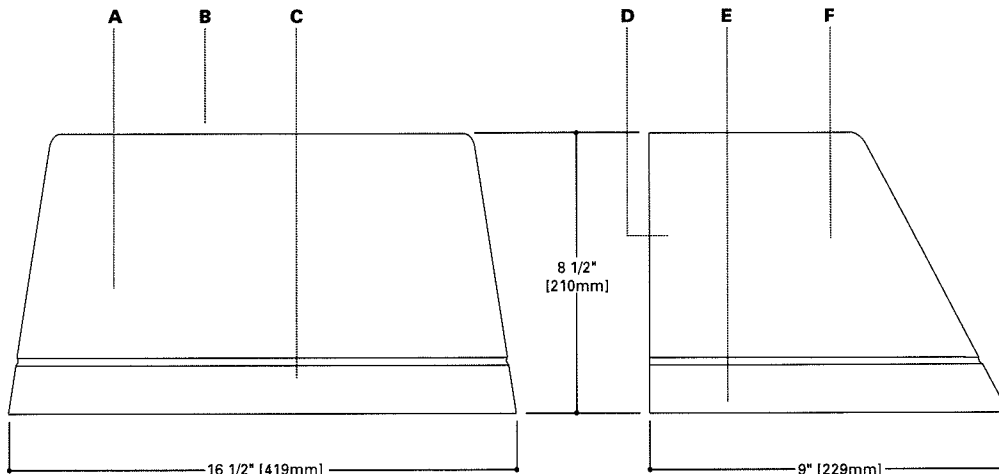


IP IMPACT TRAPEZOID

50 - 175W
High Pressure Sodium
Metal Halide
26 - 84W
Compact Fluorescent

FULL CUTOFF
WALL MOUNT LUMINAIRE

IMPACT™
Cutoff Wall Luminaires

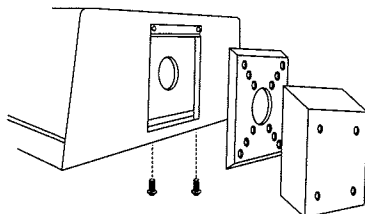


DARK SKY **FCO**
COMPLIANT Full Cutoff

In downlight applications only.

HOOK-N-LOCK MOUNTING

(Mounting attachment included. J-Box not included.)



TECHNICAL DATA

25°C Maximum Ambient Temperature
External Supply Wiring 90°C Minimum
Down Mounted—Wet Location
Up Mounted—Damp Location

ENERGY DATA

High Reactance Ballast Input Watts

50W HPS HPF (66 Watts)
50W MH HPF (72 Watts)
70W HPS HPF (91 Watts)
70W MH HPF (90 Watts)
100W HPS HPF (130 Watts)
100W MH HPF (129 Watts)
150W HPS HPF (190 Watts)
150W MH HPF (185 Watts)

CWA Ballast Input Watts

175W MH HPF (210 Watts)

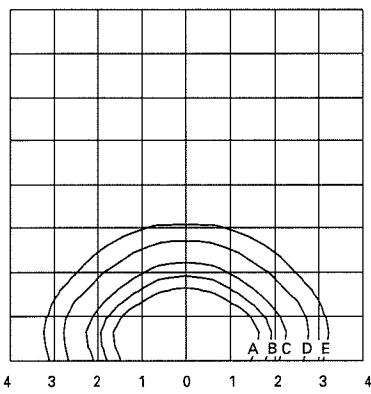
Electronic Ballast Input Watts

26W PL HPF (29 Watts)
32W PL HPF (36 Watts)
42W PL HPF (46 Watts)
52W PL HPF (55 Watts)

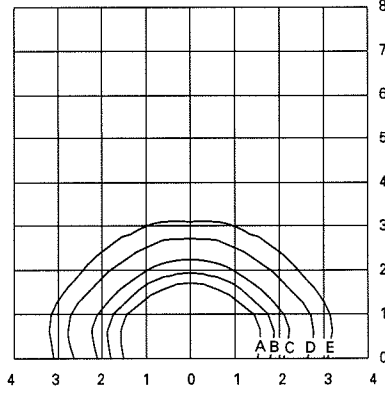
SHIPPING DATA

Approximate Net Weight:
18 lbs. (8 kgs.)





MHIP-T-175-MT-LL
175-Watt MH
14,000-Lumen Clear Lamp



HPIP-T-150-MT-LL
150-Watt HPS
16,000-Lumen Clear Lamp

Footcandle Table

Select mounting height and read across for footcandle values of each isofootcandle line. Distance in units of mounting height.

| Mounting Height | Footcandle Values for Isofootcandle Lines | | | | |
|-----------------|---|------|------|------|------|
| | A | B | C | D | E |
| 10' | 4.50 | 2.25 | 1.13 | 0.45 | 0.23 |
| 15' | 2.00 | 1.00 | 0.50 | 0.20 | 0.10 |
| 20' | 1.12 | 0.56 | 0.28 | 0.11 | 0.06 |

ORDERING INFORMATION

Sample Number: MHIP-T-150-MT-LL



Lamp Type
HP: High Pressure Sodium
MH: Metal Halide
PL: Compact Fluorescent

Series
IP: IMPACT
Fixture Shape
T: Trapezoid

Lamp Wattage
HID ¹
50: 50W²
70: 70W³
100: 100W
150: 150W
175: 175W⁴
Compact Fluorescent ⁵
26/32/42: 26, 32, or 42W
52: (2) 26W⁶
64: (2) 32W
84: (2) 42W

Voltage ⁷
120V: 120V
208V: 208V
240V: 240V
277V: 277V
347V: 347V
480V: 480V
DT: Dual-Tap⁸
MT: Multi-Tap, ⁹
 wired 277V
TT: Triple-Tap, ¹⁰
 wired 347V
E: Electronic ¹¹
 (200-277V)

Options ¹²
Q: Quartz Restrike T4 Lamp^{13, 14, 15, 16}
EM: Emergency Quartz Restrike T4 Lamp w/^{13, 14, 15, 16}
 Time Delay Relay
EMI40-XXX: CFL Cold Weather Emergency Battery^{17, 18, 6}
 Pack (Must Specify 120V or 277V)
CF/EM-XXX: Emergency Battery Pack (Must Specify^{17, 18, 6}
 120V or 277V)
QMR: Quartz Restrike MR16 Lamp^{15, 16, 20}
EMMR: Emergency Quartz Restrike MR16 Lamp w/^{15, 16, 20}
 Time Delay Relay
EM/SC: Emergency Separate Circuit T4 Lamp^{14, 16, 21}
EM/SC/MR: Emergency Separate Circuit MR16 Lamp^{20, 21}
EM/SC/12V: Emergency Separate Circuit (12V)²²
2QMR: (2) Quartz Restrike MR16 Lamp^{15, 16, 20}
2EMMR: (2) Emergency Quartz Restrike MR16^{15, 16, 20}
 Lamp w/ Time Delay Relay
2EM/SC/MR: (2) Emergency Separate Circuit MR16^{20, 21}
 Lamps
2EM/SC/12V: (2) Emergency Separate Circuit (12V)²²
2QMR/SC: (1) Quartz Restrike MR16 Lamp and (1)^{16, 20, 23}
 Emergency Separate Circuit MR16
 Lamp
2EMMR/SC: (1) Emergency Quartz Restrike MR16^{16, 20, 23}
 Lamp w/ Time Delay Relay and (1)
 Emergency Separate Circuit MR16
 Lamp
F1: Single Fuse (120, 277 or 347V only)
F2: Double Fuse (208, 240 or 480V only)
LL: Lamp Included (Must Specify Wattage on PL)²⁴
TR: Tamper Resistant Screw (Door and Mounting Plate)
UPL10: 10% Uplight
PE: Internal Photocontrol (Specify Voltage)

Standard Color
 - Bronze (Standard)
WH: White
BK: Black

- Notes:**
- All HID lamps are medium-base.
 - Available in 120V, 277V and Dual-Tap.
 - Not available in 480V.
 - Metal Halide only.
 - 52W is (2) 26W quad tube lamps. 32, 42, 84W use compact triple tube CF lamps.
 - Not available with uplight option.
 - Products also available in non-US voltages and 50HZ for international markets.
 - Dual-Tap ballast is 120/277V wired 277V.
 - Multi-Tap ballast 120/208/240/277V wired 277V.
 - Triple-Tap ballast 120/277/347V wired 347V.
 - Supplied with 120V through 277V 50/60Hz for Compact Fluorescent.
 - Add as suffix in the order shown.
 - The power might need to cycle and allow HID lamp to cool in warm climates. Available up to 175W HID.
 - For use with T4 double contact bayonet base, 100W maximum, 120V halogen lamp by others.
 - Lamps wired to quartz restrike relay.
 - Not available with CFL.
 - Battery pack will operate up to 52W CFL lamp for 90 minutes.
 - CF lamps only, rated for minimum temperature of 0°F (-18°C), 52W CFL maximum, heater rated for 300W with thermostat control.
 - CF lamps only, rated for minimum temperature of 32°F (0°C), 52W CFL maximum.
 - For use with MR16, GU10 base, 50W maximum, 120V halogen lamp by others.
 - Leads run out back for connection to auxiliary 120V circuit.
 - Supplied with 12V Bi-pin socket for connection to emergency battery pack (supplied by others). For use with MR16, GU5.3 base, 35W maximum, 12V halogen lamp by others.
 - (1) Lamp wired quartz restrike, (1) lamp wired emergency separate circuit, leads run separate out back.
 - Lamp is shipped separate from luminaire. Lamp is Cooper designated product based on luminaire requirements. Specified lamps must be ordered as a separate line item.

STOCK SAMPLE NUMBER (Lamp Included)

SAMPLE NUMBER: MHIT17



NOTES: Options not available with stock products. Order Accessories as separate items for field installation. Refer to standard ordering information to add options and accessories.
 * Painted bronze. Supplied with lamp and Multi-Tap HPF ballast wired 277V.

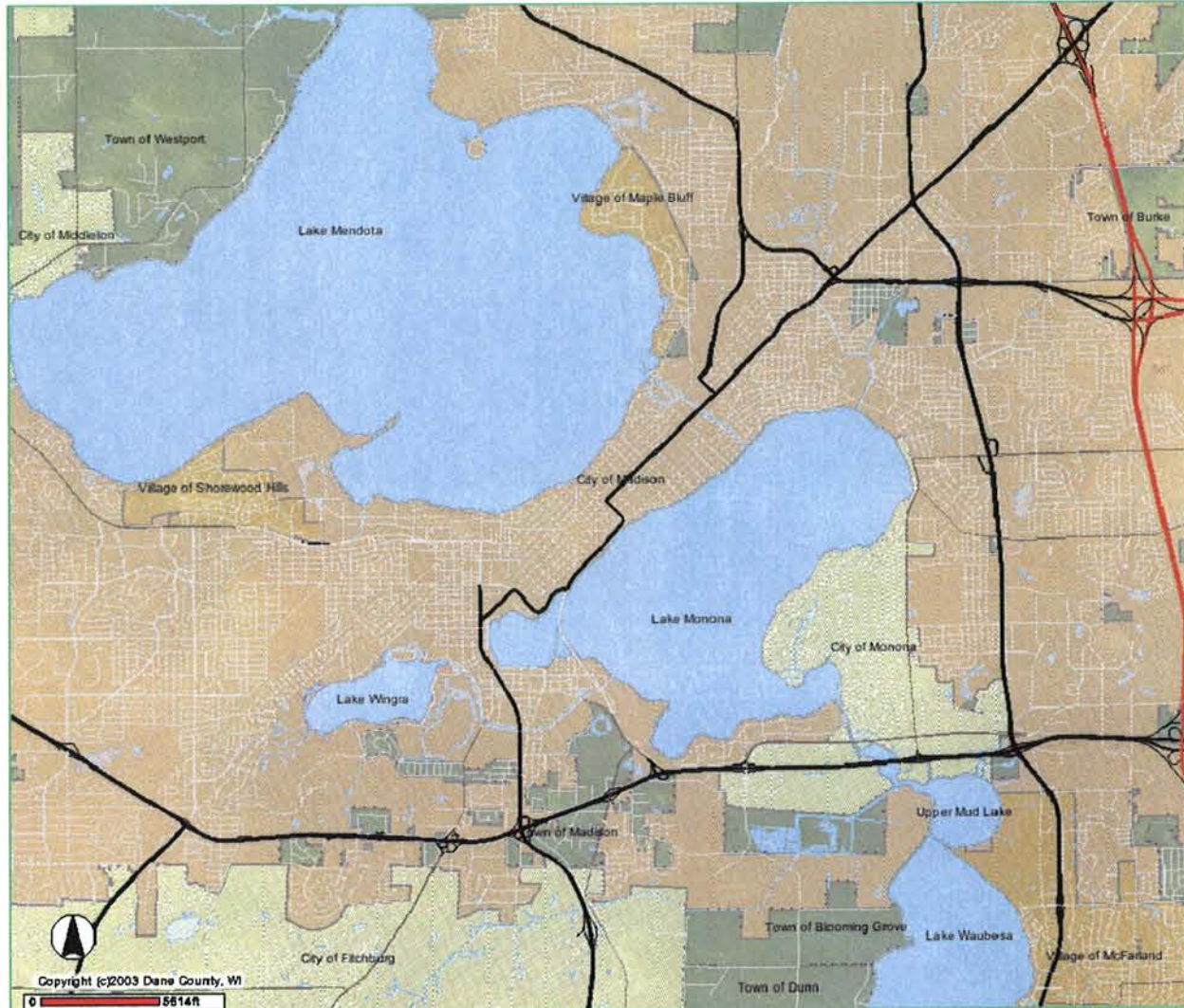
CITY OF MADISON
MATERIAL STORAGE BUILDING
WATER UTILITIES

CITY OF MADISON
919 E. MAIN STREET

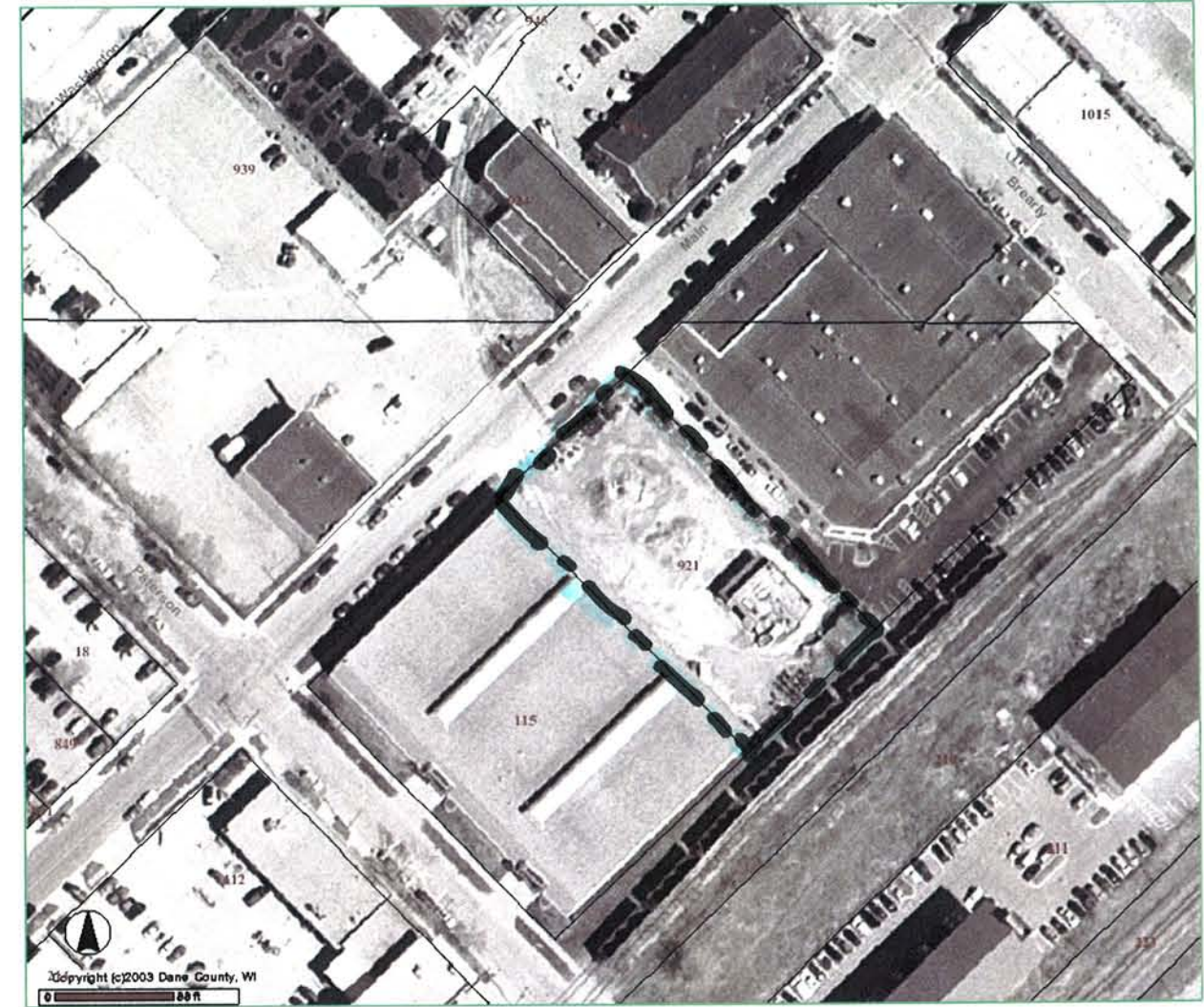
URBAN DESIGN COMMISSION - INTITIAL/FINAL APPROVAL
July 2, 2007

PRESENTED BY:

Bray Associates
ARCHITECTS, INC.



MADISON, WISCONSIN



919 E. MAIN STREET, MADISON, WI 53703



VIEW OF ENTRY FACING WEST



VIEW OF ENTRY FACING EAST



VIEW OF ENTRY FACING SOUTH



VIEW OF REAR AND WEST SIDE OF LOT



VIEW OF NORTHEAST PORTION OF LOT



VIEW OF SOUTH SIDE OF LOT



VIEW OF EAST SIDE OF LOT



VIEW OF ENTRY DOOR FOR VEHICLE STORAGE

LEGEND

These standard symbols will be found in the drawing.

- LIGHT POLE
- POWER POLE
- GUY
- TELEPHONE PEDESTAL
- ELECTRICAL BOX
- TELEPHONE MANHOLE
- SANITARY MANHOLE
- WATER MANHOLE
- STORM MANHOLE
- CATCH BASIN
- WATER VALVE
- HYDRANT
- 1" IRON PIPE FOUND
- #6 RE-BAR FOUND
- COMPUTED PROPERTY CORNER
- CONTROL POINT

- FENCE
- SANITARY SEWER
- STORM SEWER
- POWER OVERHEAD
- BURIED ELECTRIC
- BURIED GAS
- BURIED TELEPHONE
- WATERMAIN
- FIBER OPTICS
- EDGE OF BITUMINOUS
- FLAG POLE
- TREE
- PINE TREE
- BUSH/SHRUB
- ELECTRIC METER
- GAS METER
- GAS VALVE
- CONTOUR LINE
- SPOT ELEVATION
- SIGN
- SPRINKLER HEAD
- ELECTRIC OUTLETS
- WOODCHIPS
- PLAY EQUIPMENT
- POLE
- BENCH
- ROCKS
- VENT PIPE
- BASKETBALL HOOP
- SWING
- IRRIGATION BOX

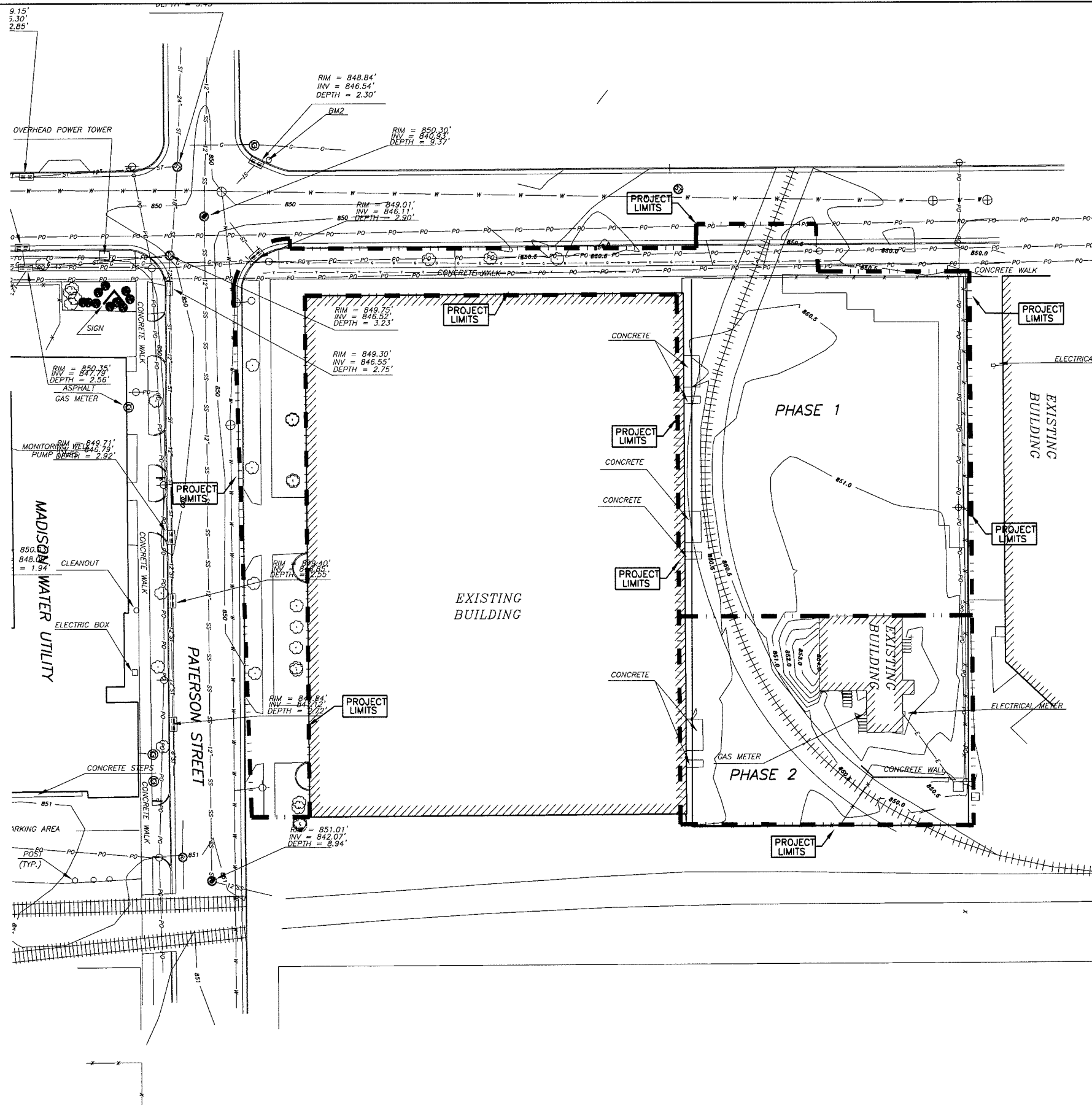
UNDERGROUND UTILITIES

THESE RECORD DRAWINGS HAVE BEEN PREPARED, IN PART, ON THE BASIS OF INFORMATION COMPILED AND FURNISHED BY OTHERS. THE SURVEYOR AND ARCHITECT WILL NOT BE RESPONSIBLE FOR ANY ERRORS OR OMISSIONS WHICH HAVE BEEN INCORPORATED INTO THIS DOCUMENT AS A RESULT.

SOME UTILITIES HAVE BEEN LOCATED BY MAPS PROVIDED BY OTHERS - LOCATIONS ARE APPROXIMATE. PRIVATE UTILITIES MAY EXIST BUT ARE NOT SHOWN ON MAP. CONTACT DIGGERS HOTLINE FOR LOCATIONS.

FIELD VERIFY SANITARY AND STORM SEWER PIPE SIZE AND LOCATION.

UNDERGROUND UTILITIES SHOWN ON THIS MAP ARE BASED IN PART ON MARKINGS BY DIGGERS HOTLINE. (TICKET # W0701.300905400)



PRELIMINARY DRAWING
NOT FOR CONSTRUCTION

Consultant:
BRAY
Bray Associates, Inc.

Soil Signature:
education
government
commercial
residential

Project Title:
**Construction Documents:
Madison Water Utility**

Project Number:
7.023

Drawn By:
DAN PEPLINSKI

Checked By:
DAN ROSSITER

Issue Dates:
06-28-07 Preliminary

Sheet Title:
**EXISTING
SITE
PLAN**

Sheet Number:
C1

Madison, Wisconsin

1408 North High Point Road, Suite 100
Madison, WI 53706
608.831.5775 www.brayarch.com

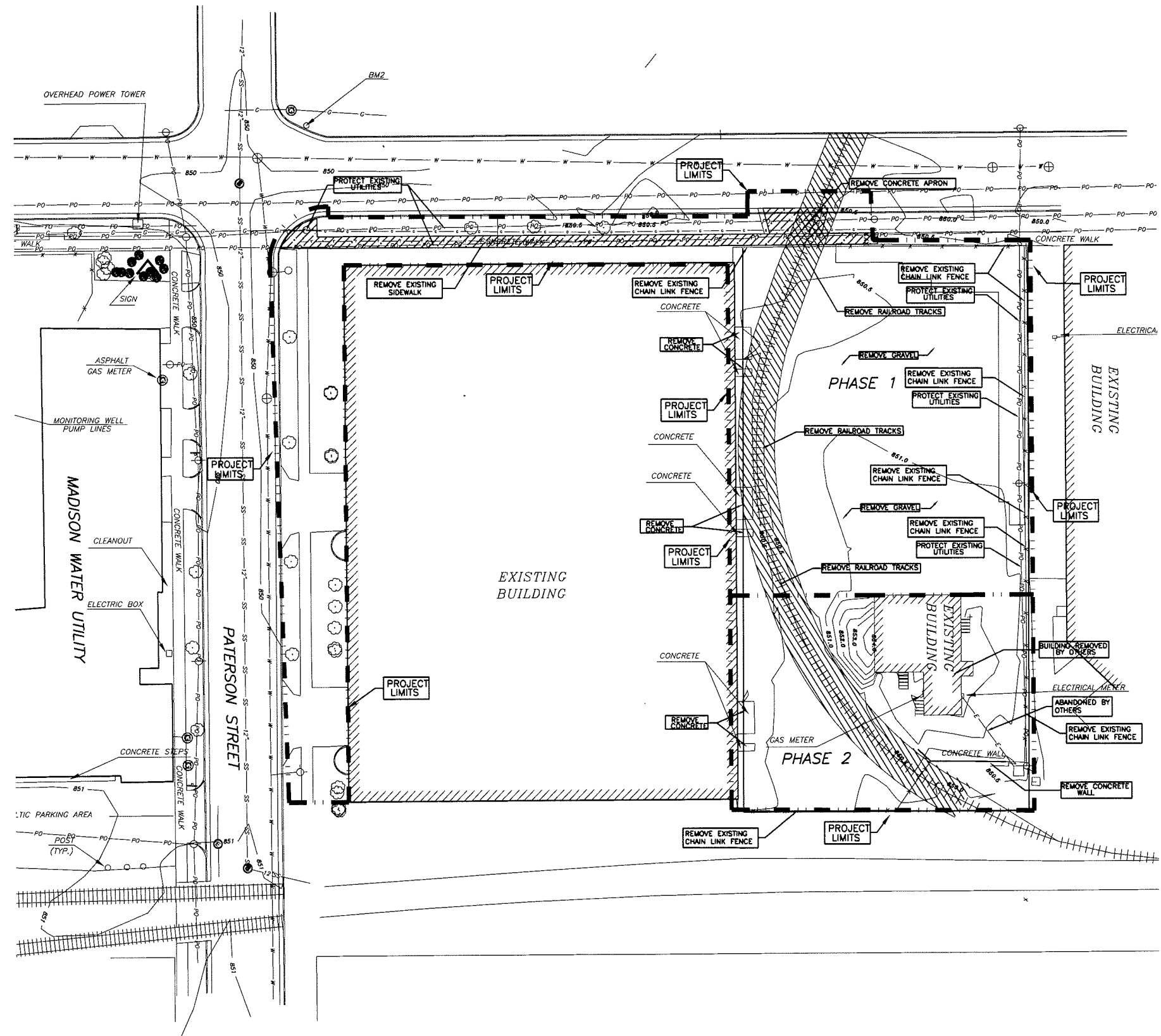
since 1982

GENERAL NOTES

1. CONTACT DIGGER'S HOTLINE 5 WORKING DAYS PRIOR TO START OF DEMOLITION/CONSTRUCTION
2. LOCATE PRIVATE UTILITIES PRIOR TO THE START OF DEMOLITION/CONSTRUCTION
3. COORDINATE WITH PROPER UTILITY COMPANY AND PAY FOR THE DISCONNECTION, ABANDONMENT, AND/OR RELOCATION OF ALL UTILITIES WITHIN THE PROJECT LIMITS WHICH IMPACT CONSTRUCTION
4. PLACE A 4' TEMPORARY FENCE AROUND THE CONSTRUCTION AREA AS DEEMED NECESSARY TO PROTECT WORK AND FOR SITE SECURITY PRIOR TO THE START OF DEMOLITION/CONSTRUCTION IN ACCORDANCE WITH THE PROJECT MANUAL SPECIFICATIONS. EXISTING FENCING MAY BE UTILIZED AS DEEMED NECESSARY.
5. STRIP TOPSOIL WITHIN THE PROJECT LIMITS IN ACCORDANCE WITH THE PROJECT MANUAL SPECIFICATIONS.
6. REMOVE ONLY THE EXISTING TREES AND VEGETATION WITHIN THE PROJECT LIMITS THAT IMPACT CONSTRUCTION.
7. REMOVE ANY ABANDONED UTILITIES WITHIN THE PROJECT LIMITS THAT IMPACT CONSTRUCTION.
8. ALL CONTRACTORS PLANNING ON BIDDING THE PROJECT MUST VISIT THE SITE AND REVIEW THE EXISTING CONDITIONS PRIOR TO THE BID DATE. ANY DISCREPANCIES FOUND ARE TO BE BROUGHT TO THE ATTENTION OF THE PROJECT ARCHITECT FOR REVIEW IMMEDIATELY UPON DISCOVERY.
9. ALL REMOVED MATERIALS ARE TO BE TAKEN FROM SITE AND DISPOSED OF IN A LEGAL MANNER, EXCEPT FOR THOSE ITEMS NOTED TO BE SALVAGED. VERIFY ALL REMOVAL ITEMS WITH OWNER.
10. ALL SITE ENTRANCES OUTSIDE THE PROJECT LIMIT LINE SHALL NOT BE DISTURBED.
11. COORDINATE SITE CONSTRUCTION ACCESS FROM OWNER PRIOR TO START OF CONSTRUCTION.
12. REMOVE SIDEWALK TO NEAREST EXISTING EXPANSION JOINT.

DEMOLITION LEGEND

- REMOVE AND DISPOSE RAILROAD TRACK AND SURFACE
- SANICUT
- REMOVE CONCRETE



PRELIMINARY DRAWING
NOT FOR CONSTRUCTION

Consultant:
SHR
retailer Corporation

Soil Signature:
education government commercial retail
Bray Associates ARCHITECTS, INC.
1468 North High Point Road, Suite 100
Madison, WI 53702
608.831.5775 www.brayarch.com since 1982

Project Title:
**Construction Documents:
Madison Water Utility**

Project Number:
7.023

Drawn By:
DAN PEPLUNSKI

Checked By:
DAN ROSSITER

Issued For:

Issue Dates:
06-28-07 Preliminary

Sheet Title:
DEMOLITION PLAN

Sheet Number:
C2

GENERAL NOTES

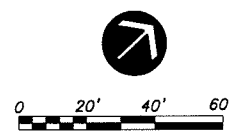
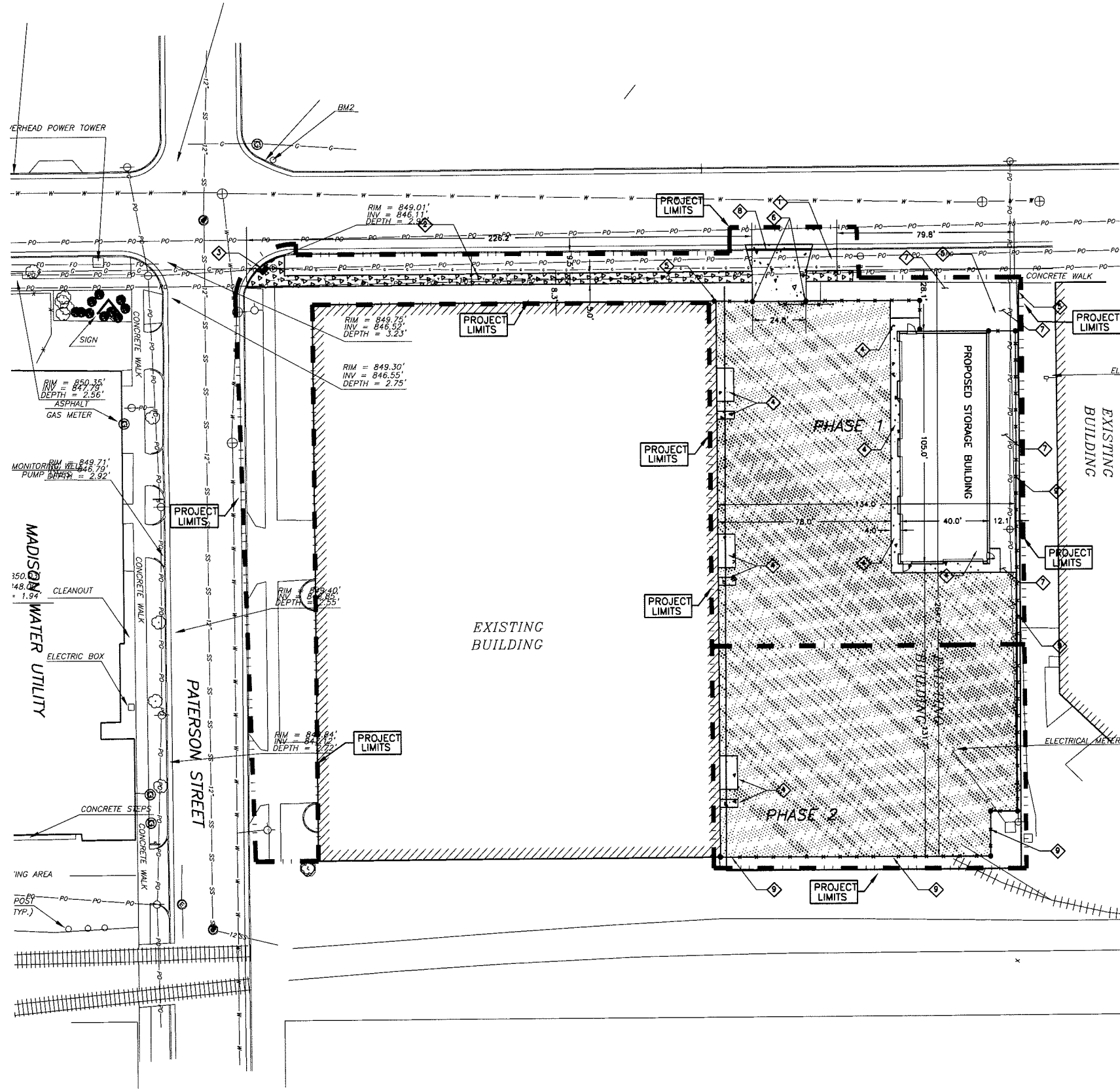
1. CONTACT DIGGER'S HOTLINE 5 WORKING DAYS PRIOR TO THE START OF CONSTRUCTION.
2. ALL PROPOSED DIMENSIONS ARE REFERENCED PARALLEL OR PERPENDICULAR TO THE PROPOSED FEATURES SHOWN.
3. GRADE, LINE AND LEVEL SHALL BE REVIEWED IN THE FIELD BY THE PROJECT MANAGER.
4. SEED, FERTILIZE, AND CRIMP MULCH ALL GENERAL LANDSCAPE AREAS DISTURBED DURING CONSTRUCTION IN ACCORDANCE WITH THE PROJECT MANUAL SPECIFICATIONS EXCEPT THOSE AREAS INDICATING SOO.
5. ANY EXISTING UTILITIES NOT SHOWN ON THESE DOCUMENTS WHICH NEED TO BE REMOVED, RELOCATED, AND OR ADJUSTED SHALL BE THE RESPONSIBILITY OF THE SITE CONTRACTOR AND INCLUDED IN THE BASE BID.
6. ALL CONTRACTORS SUBMITTING A BID SHALL VISIT THE SITE AND REVIEW THE EXISTING SITE CONDITIONS PRIOR TO THE BID DATE.
7. REMOVE TREES ONLY AS NECESSARY TO CONSTRUCT FACILITIES.

KEY NOTES

- ① CONCRETE DRIVEWAY APRON
- ② 4" CONCRETE SIDEWALK
- ③ CURB RAMP, TYPE 1 W/ DETECTABLE WARNING FIELDS
- ④ 6" REINFORCED CONCRETE APRON
- ⑤ AMERSTAR FENCE - TRIDENT
- ⑥ 24" AUTOMATED CANTILEVER GATE
- ⑦ BARK MULCH
- ⑧ 30" CURB AND GUTTER
- ⑨ CHAIN LINK FENCE - VINYL COATED COLOR: BLACK

SITE LEGEND

- 4" ASPHALTIC CONCRETE PAVEMENT, TYPE E 1.0
- 6" DENSE GRADED BASE, 1 1/4" GRADE
- 12" DENSE GRADED BASE, 3" GRADE
- 6" CONCRETE REINFORCED PAVEMENT
- 6" DENSE GRADED BASE, 1 1/4" GRADE
- 12" DENSE GRADED BASE, 3" GRADE
- 4" CONCRETE SIDEWALK
- 6" DENSE GRADED BASE



PRELIMINARY DRAWING
NOT FOR CONSTRUCTION

Consultant:
RR
reflector corporation

Seal/Signature:
education
commercial
residential

Project Title:
**Construction Documents:
Madison Water Utility**

Project Number:
7.023

Drawn By:
DAN PEPLINSKI

Checked By:
DAN ROSSITER

Issue Dates:
06-28-07 Preliminary

Sheet Title:
**LAYOUT
PLAN**

Sheet Number:
C3

BrayAssociates ARCHITECTS, INC.
1469 North High Point Road, Suite 100
Madison, WI 53762
608.831.5775 / FAX 608.831.2619
www.brayarch.com
since 1962

Madison, Wisconsin

© 2008 Bray Associates Architects, Inc.

GRADING LEGEND

- PROPOSED CONTOURS 787
- EXISTING CONTOURS 788
- PROPOSED SPOT ELEVATION 852.28
- PROPOSED TOP OF THICKENED EDGE WALK 852.28
- PROPOSED BOTTOM OF THICKENED EDGE WALK 851.73

STORM SEWER/UTILITY LEGEND

- 4" SANITARY SEWER SLOPE AS REQ'D BY PLUMBING FIXTURES (1/8" PER FOOT MINIMUM) 8.5' COVER MINIMUM SS
- 2" WATER SERVICE 8.5' COVER MINIMUM W
- STORM SEWER (SIZE PER SCHEDULE) PO
- STORM STRUCTURE ⊕
- PROPRIETARY STORMWATER DEVICE P

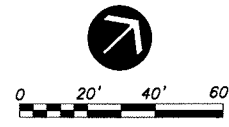
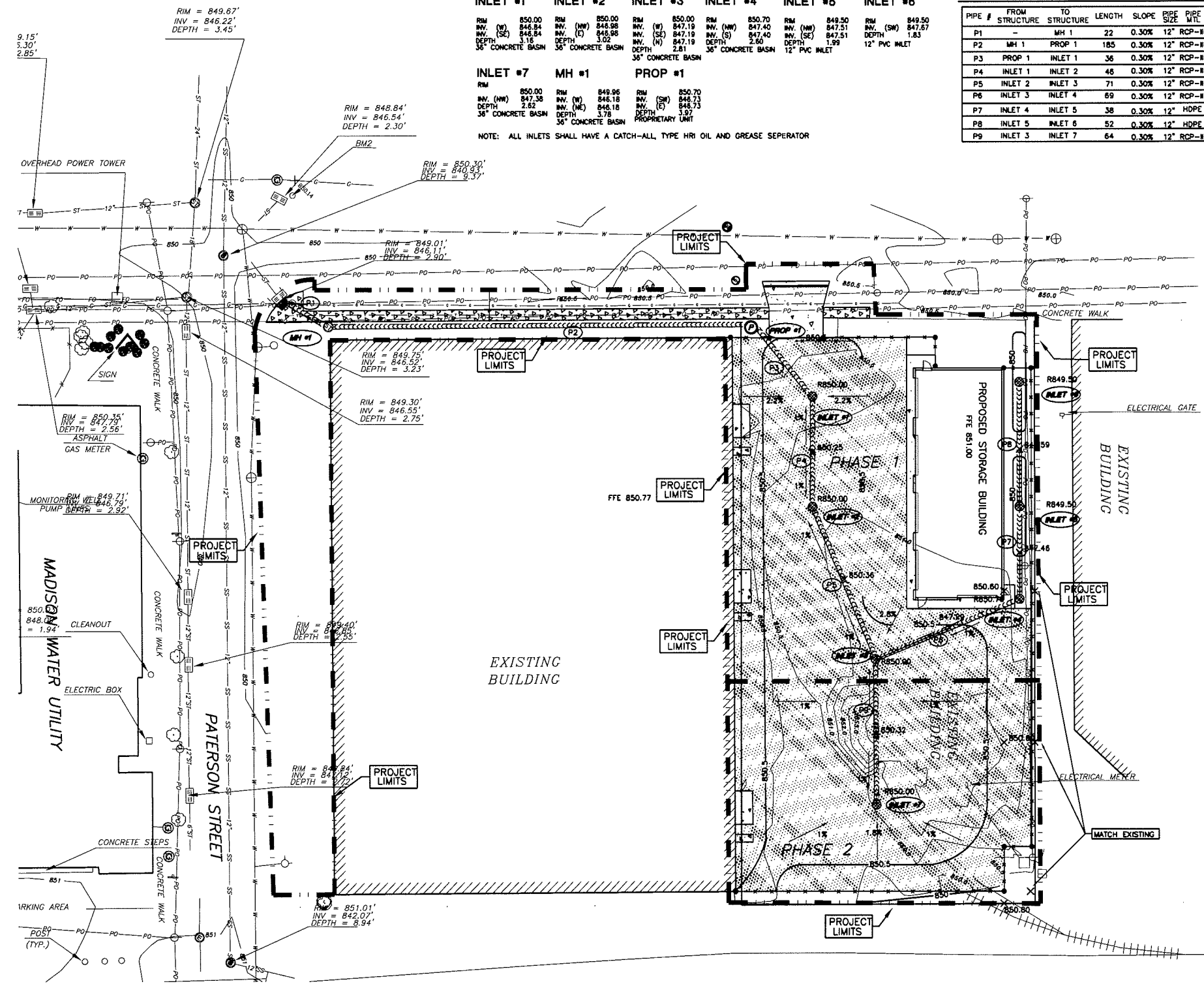
INLET SCHEDULE

| INLET #1 | INLET #2 | INLET #3 | INLET #4 | INLET #5 | INLET #6 |
|--|--|--|--|--|--|
| RM 850.00 INV. (W) 846.84 INV. (SE) 846.84 DEPTH 3.16 36" CONCRETE BASIN | RM 850.00 INV. (NW) 848.98 INV. (E) 848.98 DEPTH 3.02 36" CONCRETE BASIN | RM 850.00 INV. (W) 847.19 INV. (SE) 847.19 DEPTH 2.81 36" CONCRETE BASIN | RM 850.70 INV. (NW) 847.40 INV. (S) 847.40 DEPTH 2.80 36" CONCRETE BASIN | RM 849.50 INV. (NW) 847.51 INV. (SW) 847.51 DEPTH 1.99 12" PVC INLET | RM 849.50 INV. (SW) 847.67 INV. (SE) 847.67 DEPTH 1.83 12" PVC INLET |
| INLET #7 | MH #1 | PROP #1 | | | |
| RM 850.00 INV. (NW) 847.38 DEPTH 2.62 36" CONCRETE BASIN | RM 848.96 INV. (W) 848.18 INV. (E) 848.18 DEPTH 3.78 36" CONCRETE BASIN | RM 850.70 INV. (SW) 848.73 INV. (S) 848.73 DEPTH 3.97 PROPRIETARY UNIT | | | |

NOTE: ALL INLETS SHALL HAVE A CATCH-ALL, TYPE HRI OIL AND GREASE SEPARATOR

PIPE SCHEDULE

| PIPE # | FROM STRUCTURE | TO STRUCTURE | LENGTH | SLOPE | PIPE SIZE | PIPE MTL |
|--------|----------------|--------------|--------|-------|-----------|----------|
| P1 | - | MH 1 | 22 | 0.30% | 12" | RCP-II |
| P2 | MH 1 | PROP 1 | 185 | 0.30% | 12" | RCP-II |
| P3 | PROP 1 | INLET 1 | 36 | 0.30% | 12" | RCP-II |
| P4 | INLET 1 | INLET 2 | 46 | 0.30% | 12" | RCP-II |
| P5 | INLET 2 | INLET 3 | 71 | 0.30% | 12" | RCP-II |
| P6 | INLET 3 | INLET 4 | 69 | 0.30% | 12" | RCP-II |
| P7 | INLET 4 | INLET 5 | 38 | 0.30% | 12" | HDPE |
| P8 | INLET 5 | INLET 6 | 52 | 0.30% | 12" | HDPE |
| P9 | INLET 3 | INLET 7 | 64 | 0.30% | 12" | RCP-II |



PRELIMINARY DRAWING
NOT FOR CONSTRUCTION


 Consultant:
 Seal/Signature:
 Validation:
 government
 professional
 seal
Bray Associates, INC.
 ARCHITECTS, INC.
 1408 North High Point Road, Suite 100
 Madison, WI 53704
 608.881.5715
 www.brayarch.com
 since 1982

Project Title:
**Construction Documents:
 Madison Water Utility**

Project Number:
7.023

Drawn By:
DAN PEPLINSKI

Checked By:
DAN ROSSITER

Issued For:

Issue Dates:
 06-28-07 Preliminary

Sheet Title:
**GRADING
 UTILITY
 PLAN**

Sheet Number:
C4

© 2007 Bray Associates, Inc.

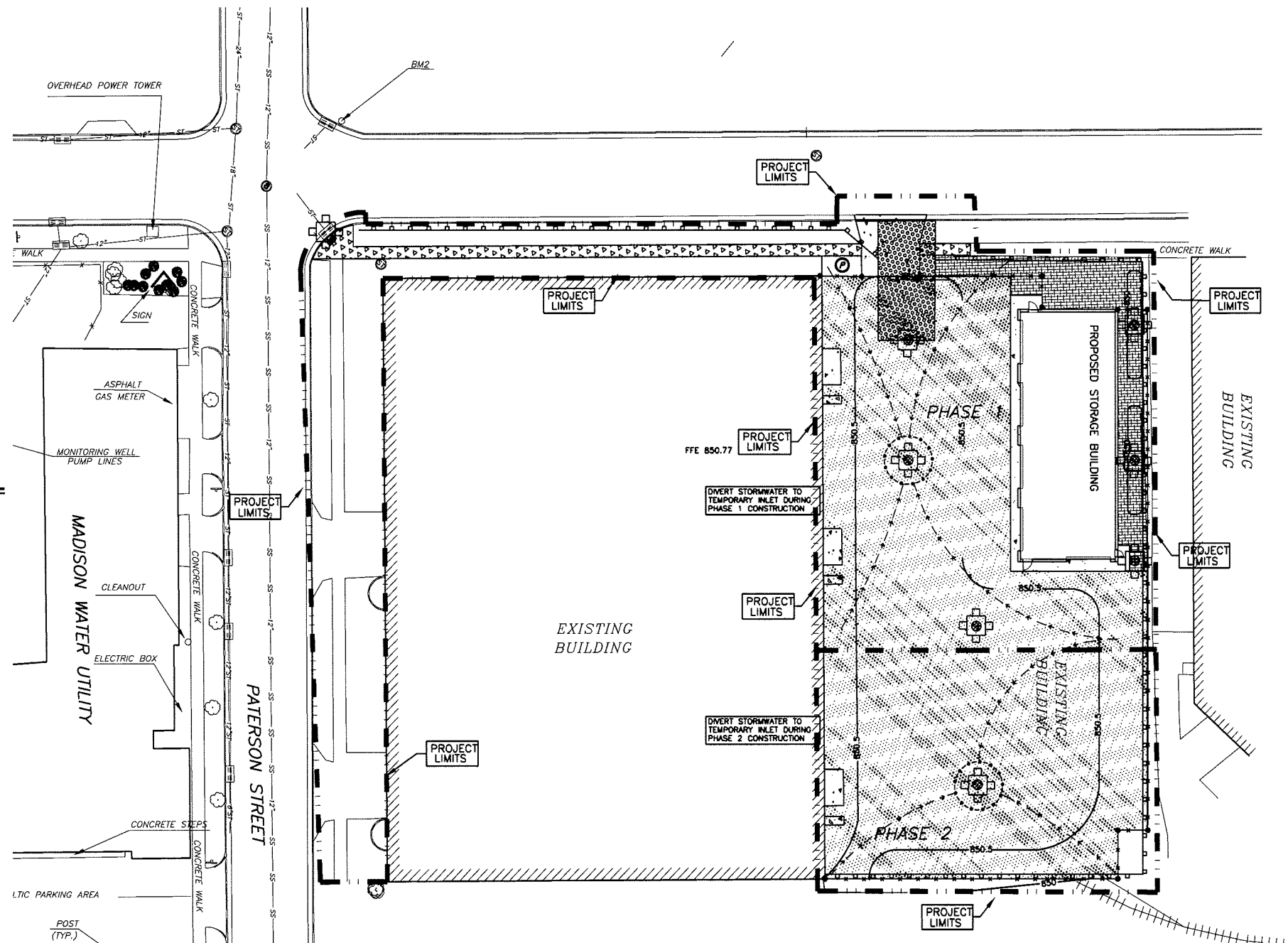
CONSTRUCTION SEQUENCE REQUIREMENTS

| Construction Activity* | Scheduled Control Measures | Duration |
|--|---|--|
| 1. Construction access - Construction entrance, construction routes, and equipment parking areas | First land disturbing activity - tracking pads will be constructed at entrance to the site. Bare areas will be stabilized with gravel as construction takes place. | Start July, 2007 2 days initially & as needed later |
| 2. Inlet protection and barriers - The installation of Type D inlet protection, silt fences, and outlet protection | Set up inlet protection units after project site is accessed including silt fence as indicated on the plans. | 4 days |
| 3. BASIN CONSTRUCTION 3a. Runoff control - Excavate dry detention basin (future rain garden). Use swales and dikes if necessary to divert water to basin. 3b. Sediment Control During Construction - Excavate drop inlet protection for sediment control | 3a. Install erosion mat and additional practices outlined above as necessary during grading. 3b. If necessary during excavation, use a geotextile filter bag to treat water pumped out of sediment trap. | 14 days |
| 4. Runoff conveyance system - Construct storm sewer system. | Install principal runoff conveyance system with runoff control measures. Stabilize storm drains, inlet and outlet protection as early as possible. Once installed, create small sediment basin around inlet 2. Install remainder of system after grading. | 10 days |
| 5. Land clearing and grading - Site preparation, cutting, filling, grading and topsoil stockpiles See "Erosion Control Notes" on Sheet C6 for more detail. | Begin major clearing and grading after principal erosion control practices have been installed. Clear and grade only as needed. Install additional measures as necessary such as silt fence or sprayed polymer around topsoil stockpiles. Mark trees and buffer areas for preservation. | 10 days initially & as needed later |
| 6. Surface stabilization - Temporary and permanent seeding, native grasses, mulching, sodding, and riprap | Apply temporary or permanent stabilization measures immediately on all disturbed areas where work is delayed or complete. | As needed |
| 7. Building construction - Buildings, utilities, and paving | Install necessary practices before work takes place. | Approx. 300 days |
| 8. Landscaping and final stabilization - Piece fit in portion of the detention basin temporarily used for sediment control prior to landscaping. Topsoiling, trees and shrubs, permanent seeding, mulching, sodding, riprap. | Last construction phase - Restore excavated drop inlet to its original volume and depth prior to final grading. Stabilize all open areas, including borrow and spoil areas. Remove and stabilize all temporary practices. | 10 days |
| 9. Winter Stabilization - In the event the project is not completed before November 2007 | Apply sprayed polymer around stockpiles and open areas not yet stabilized. Monitor per supplier recommendations. | As needed |

*Maintenance activities will be performed throughout the construction process. Inspections will be performed at least weekly and after all storm events. All necessary repairs will be made immediately.

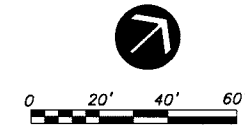
GENERAL NOTES

- CONTACT DIGGER'S HOTLINE 5 WORKING DAYS PRIOR TO THE START OF CONSTRUCTION.
- GRADE, LINE, AND LEVEL TO BE REVIEWED IN THE FIELD BY THE PROJECT MANAGER.
- PLACE SILT FENCING AROUND THE PROPOSED AND EXISTING CATCH BASINS, MANHOLES, AND INLETS FOR THE DURATION OF CONSTRUCTION.
- ALL EXISTING UTILITIES WHICH ARE NOT SHOWN ON THESE DOCUMENTS WHICH NEED TO BE REMOVED, RELOCATED, AND/OR ADJUSTED SHALL BE THE RESPONSIBILITY OF THE SITE CONTRACTOR AND INCLUDED IN THE BASE BID.
- ALL BIDDERS SUBMITTING A BID SHALL VISIT THE SITE PRIOR TO SUBMITTING A BID AND REVIEW THE EXISTING CONDITIONS OF THE SITE.
- PLACE 6" TOPSOIL AND SEED / FERTILIZE / AND CRIMP MULCH ALL GENERAL LANDSCAPE AREAS DISTURBED DURING CONSTRUCTION IN ACCORDANCE WITH THE PROJECT MANUAL SPECIFICATIONS AND WITHIN 3 WORKING DAYS OF FINAL GRADING.
- ALL EROSION CONTROL MEASURES SHALL REMAIN IN PLACE UNTIL A SUFFICIENT GROWTH OF GRASS IS ESTABLISHED IN ALL GENERAL LANDSCAPE AREAS, AND THEN REMOVED BY THE SITE CONTRACTOR.
- THE SITE CONTRACTOR SHALL INSTALL AND MAINTAIN ALL EROSION CONTROL ELEMENTS IN ACCORDANCE WITH THE DEPARTMENT OF NATURAL RESOURCES AND THE LOCAL GOVERNING AUTHORITIES REGULATIONS.
- INSPECT ALL EROSION CONTROL ELEMENTS A MINIMUM OF ONCE PER WEEK AND AFTER STORM EVENTS OF 1/2" OF RAIN OR GREATER WITHIN 24-HOURS AND DOCUMENT IN ACCORDANCE WITH THE REQUIREMENTS OF THE NOTICE OF INTENT.
- ALL EROSION CONTROL METHODS SHALL BE INSTALLED AND MAINTAINED AS PER THE LOCAL AUTHORITY.
- ALL WASTE AND UNUSED BUILDING MATERIALS SHALL BE PROPERLY DISPOSED OF AND NOT ALLOWED TO BE CARRIED OFF-SITE BY RUNOFF OR WIND.
- ALL OFF SITE SEDIMENT DEPOSITS OCCURRING AS A RESULT OF CONSTRUCTION WORK OR A STORM EVENT SHALL BE CLEANED UP BY THE END OF EACH DAY. FLUSHING SHALL NOT BE ALLOWED.
- THE CONTRACTOR SHALL NOTIFY THE LOCAL AUTHORITY'S EROSION CONTROL INSPECTOR AT LEAST 2 DAYS PRIOR TO THE START OF SOIL DISTURBING ACTIVITIES.
- BUILDING/PAVING PERMITS WILL BE WITHHELD UNTIL ALL INITIAL EROSION CONTROL PRACTICES ARE IMPLEMENTED AND APPROVED BY THE LOCAL AUTHORITY'S EROSION CONTROL INSPECTOR.
- ALL ACTIVITIES SHALL BE CONDUCTED IN A LOGICAL SEQUENCE AS TO MINIMIZE THE AMOUNT OF BARE SOIL EXPOSED AT ANY ONE TIME. MAINTAIN EXISTING VEGETATION AS LONG AS POSSIBLE.
- ALL SEDIMENT LADEN WATER PUMPED FROM THE SITE SHALL BE TREATED BY A TEMPORARY SEDIMENT BASIN OR BE FILTERED BY OTHER APPROVED MEANS. WATER SHALL NOT BE DISCHARGED IN A MANNER THAT CAUSES EROSION OF THE SITE OR RECEIVING CHANNELS.
- DISTURBED GROUND OUTSIDE OF THE EVERYDAY CONSTRUCTION AREA, INCLUDING SOIL STOCKPILES LEFT INACTIVE FOR MORE THAN 10 DAYS, SHALL AT A MINIMUM BE TEMPORARILY STABILIZED BY SEEDING/MULCHING OR OTHER METHODS APPROVED BY THE LOCAL GOVERNING AUTHORITY'S EROSION CONTROL INSPECTOR.
- IN THE CASE OF LATE SEASON AND WINTER CONSTRUCTION, RESTORATION/LANDSCAPING OF THE SITE SHALL OCCUR NO LATER THAN JUNE 1ST OF THE NEXT CONSTRUCTION SEASON. EROSION CONTROL MEASURES SHALL REMAIN INTACT UNTIL FINAL RESTORATION OF THE SITE IS COMPLETE. FABRIC INSIDE THE INLET AND CATCH BASIN GRATING SHALL BE REMOVED AS SOON AS FREEZING WEATHER OCCURS SO DRAINAGE IS NOT IMPAIRED THROUGHOUT THE WINTER MONTHS. ALL EROSION CONTROL PRACTICES REMOVED OR DAMAGED DUE TO WINTER WEATHER SHALL BE REPLACED IN THE SPRING IMMEDIATELY AFTER THE THAW AT THE EXPENSE OF THE CONTRACTOR.
- EROSION CONTROL DEVICES DESTROYED AS A RESULT OF CONSTRUCTION ACTIVITIES SHALL BE REPAIRED BY THE END OF THE WORK DAY.
- TEMPORARY EROSION CONTROL MEASURES SHALL BE REMOVED AT THE CONCLUSION OF CONSTRUCTION AFTER STABILIZATION OF DISTURBED SOIL HAS OCCURRED.
- GEOTEXTILE FILTER FABRIC USED AS A SEDIMENT BARRIER IN STORM DRAIN INLETS AND CATCH BASINS SHALL BEGIF 403 AS MANUFACTURED BY LINO INDUSTRIAL FABRICS, OR FILTERWEAVE 401, AS MANUFACTURED BY TC MIRAP. FABRIC SHALL BE PLACED UNDER THE GRATE, WITH A MINIMUM OF 8 INCHES OF FABRIC EXTENDING BEYOND THE GRATING TO PROVIDE AND EXCESSIVE PONDING/FLOODING MAY OCCUR. FABRIC SHALL NOT BE RIPPED OR CUT TO PREVENT PONDING. IF FABRIC IS RIPPED IT SHALL BE REPLACED IMMEDIATELY. ALTERNATE PROTECTION SHALL BE USED IF PONDING MAY CAUSE DAMAGE TO ADJACENT BUILDINGS AND/OR PROPERTIES.
- THE RETENTION AREA SHALL SERVE AS A TEMPORARY SEDIMENT BASIN DURING CONSTRUCTION. PRIOR TO FINAL SEEDING, ALL SEDIMENT ACCUMULATED IN THE RETENTION AREA SHALL BE REMOVED.



EROSION CONTROL LEGEND

| | | |
|---------------------------------|--|------------|
| SILT FENCE | | 7 C5 |
| TEMPORARY DIVERSION SWALE | | |
| TRACKING PAD | | 8 C5 |
| WOOD BARK MULCH | | 9-10 C5 |
| EXCAVATED DROP INLET PROTECTION | | 11 C5 |
| INLET PROTECTION, TYPE D | | 12 C5 |



PRELIMINARY DRAWING
NOT FOR CONSTRUCTION

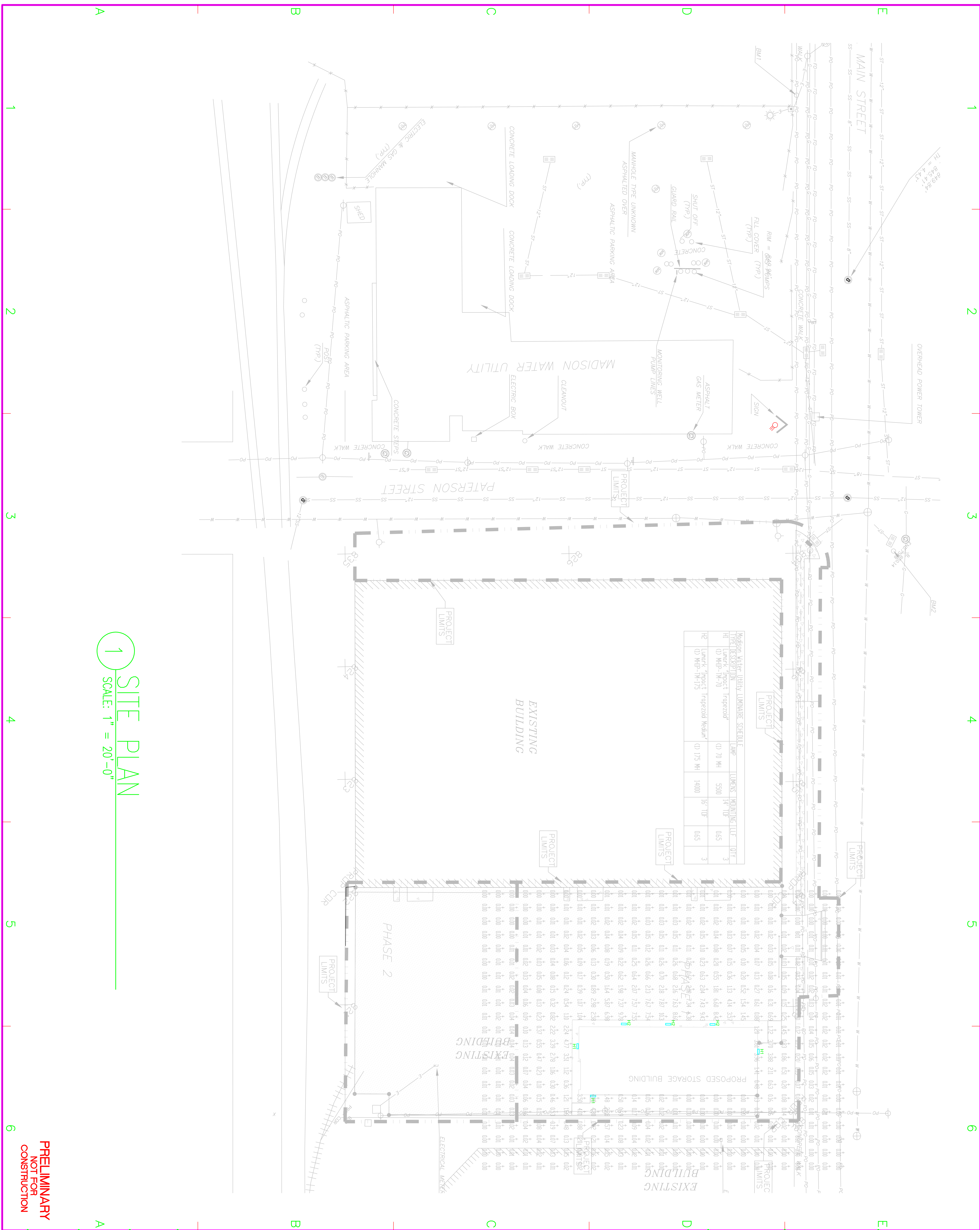
Consultant: **BRAY ASSOCIATES ARCHITECTS, INC.**
 1468 North High Point Road, Suite 100
 608.831.5775 FAX 608.831.5819
 www.brayarch.com since 1982

Project Title: **Construction Documents: Madison Water Utility**
 Project Number: **7.023**
 Drawn By: **DAN PEPLINSKI**
 Checked By: **DAN ROSSITER**
 Issued For:

Issue Dates: **06-28-07 Preliminary**

Sheet Title: **Erosion Control Plan**
 Sheet Number: **C5**

Madison, Wisconsin



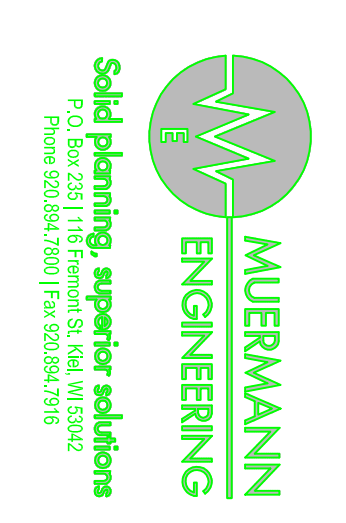
1 SITE PLAN
SCALE: 1" = 20'-0"

PRELIMINARY
NOT FOR
CONSTRUCTION

CITY OF MADISON WATER UTILITIES
MATERIAL STORAGE BUILDING
 919 E. MAIN STREET, MADISON, WI 53711

CITY OF MADISON - URBAN DESIGN COMMISSION SUBMITTAL

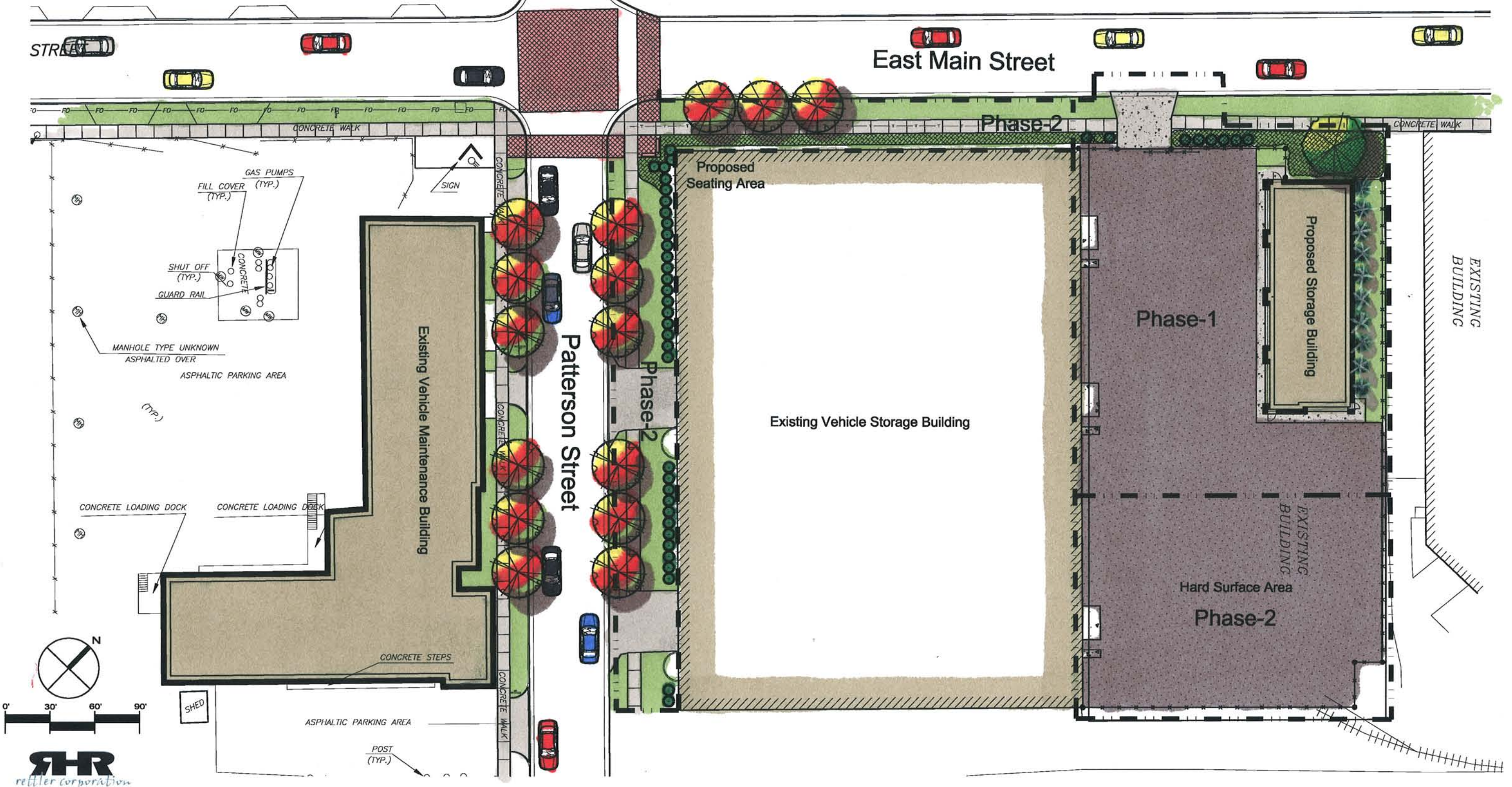
Bray Associates
 ARCHITECTS, INC.
 212 E. WASHINGTON AVE.
 MADISON, WI 53711
 PHONE (608) 441.2575
 FAX (608) 441.2580
 www.brayorch.com



| MARK | DATE | DESCRIPTION |
|---------------|------|-------------|
| PROJECT NO: | 2853 | |
| PROJECT FILE: | | |
| DRAWN BY: | AK | |
| CHECKED BY: | CK | |
| CONTRIBUTOR: | | |
| SHEET TITLE: | #### | |

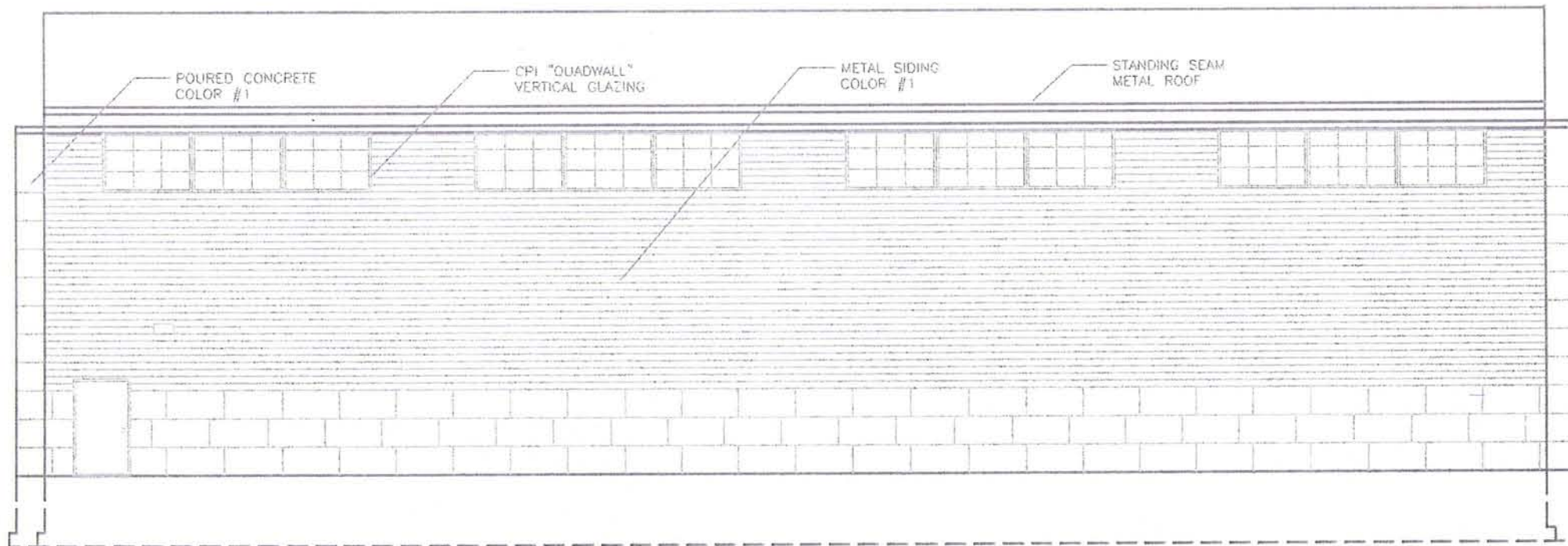
Landscape Plan

- Proposed Specimen Tree**
Syringa reticulata 'Ivory Silk'
- Proposed Evergreen Shrub**
Juniperus chinensis 'Mint Julep' (Mint Julep Juniper)
Taxus media 'Taunton' (Taunton Japanese Yew)
- Proposed Street Trees**
Cercis canadensis (Eastern Redbud)
Amelanchier x grandiflora (Apple Serviceberry)
- Proposed Evergreen Tree**
Thuja occidentalis 'Holmstrup' (Holmstrup Arborvitae)
- Proposed Perennial Bed/Groundcover**
Vinca Minor (Periwinkle)
Euonymus fortunei (Wintercreeper)





1 WEST ELEVATION
SCALE: 1/8" = 1'-0"



2 EAST ELEVATION
SCALE: 1/8" = 1'-0"

Bray Associates
ARCHITECTS, INC.
212 E. WASHINGTON AVE
MADISON, WI 53711
PHONE (608) 441.2575
FAX (608) 441.2580

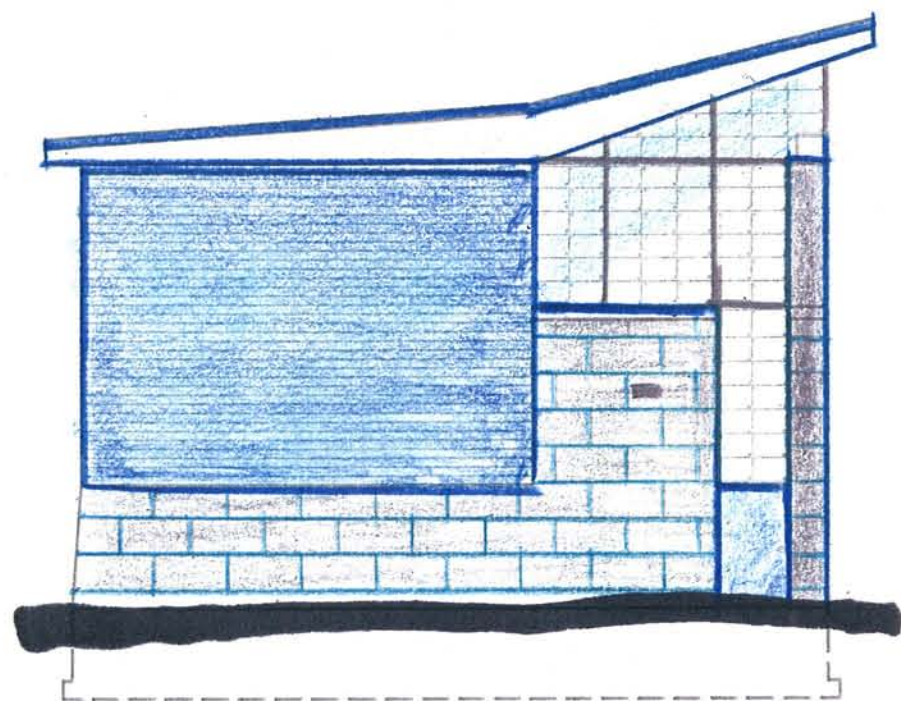
CITY OF MADISON WATER UTILITIES
MATERIAL STORAGE BUILDING
919 E. MAIN STREET, MADISON, WI 53711
CITY OF MADISON - URBAN DESIGN COMMISSION SUBMITTAL

Sheet Title
EXTERIOR ELEVATIONS

| Rev. | Date | Description | By |
|------|------|-------------|----|
| | | | |
| | | | |
| | | | |

| | |
|--------------------------|------------------------------|
| Project Number: 2853 | Drawn By: Brian R. |
| Date Issued: 05/12/07 | Reviewed By: RICH LUNDEEN |

Sheet Number:
A2.2



1 NORTH ELEVATION
SCALE: 1/8" = 1'-0"

132'-8"
ROOF PEAK

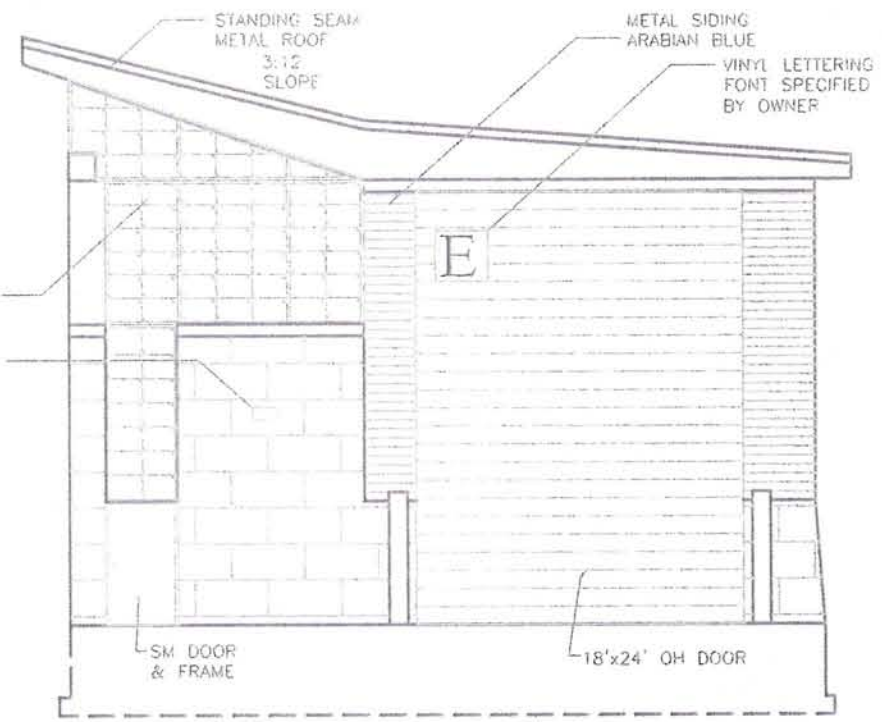
124'-6"
T/POURED WALL

C.P.I. CLEARSTORY
ACRYLIC GLAZING

COOPER LIGHTING
LUMARK CUTOFF

100'-0"
FIRST FLOOR

96'-0"
T.O FOOTING



2 SOUTH ELEVATION
SCALE: 1/8" = 1'-0"

Bray Associates
ARCHITECTS, INC.
212 E. WASHINGTON AVE
MADISON, WI 53711
PHONE (608) 441.2575
FAX (608) 441.2580

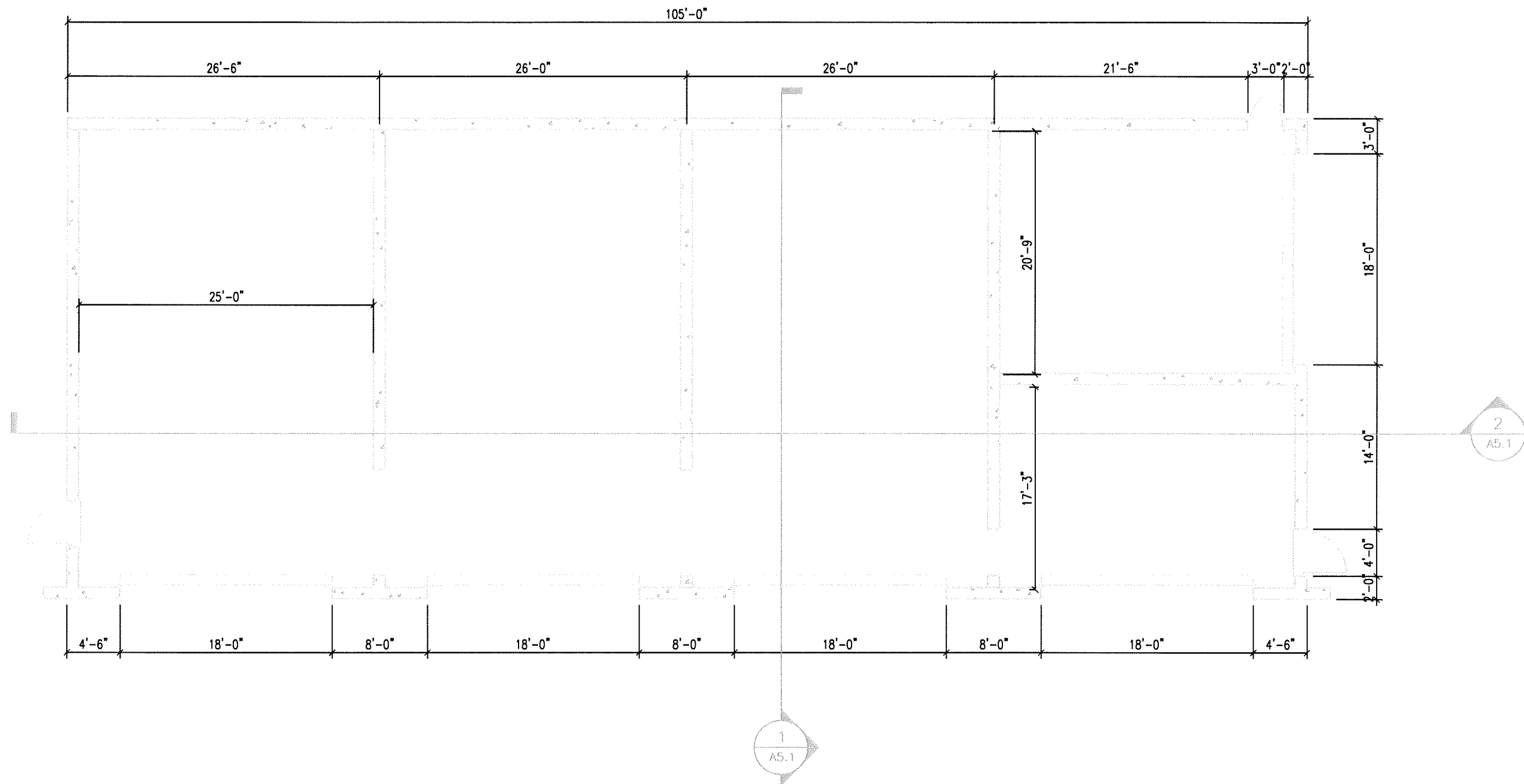
CITY OF MADISON WATER UTILITIES
MATERIAL STORAGE BUILDING
919 E. MAIN STREET, MADISON, WI 53711
CITY OF MADISON - URBAN DESIGN COMMISSION SUBMITTAL

Sheet Title:
EXTERIOR ELEVATIONS

| Revisions: | Rev. | Date | Description |
|------------|------|------|-------------|
| | | | |
| | | | |
| | | | |

Project Number: 2853
Date Issued: 05/12/07
Drawn By: Erion R.
Reviewed By: RICH LUNDEEN

Sheet Number:
A2.1



1 MAIN FLOOR PLAN
 1/8" = 1' - 0"

BrayAssociates
 ARCHITECTS, INC.
 212 E. WASHINGTON AVE.
 MADISON, WI 53711
 PHONE (608) 441.2575
 FAX (608) 441.2580

CITY OF MADISON WATER UTILITIES
 MATERIAL STORAGE BUILDING
 919 E. MAIN STREET, MADISON, WI 53711
 CITY OF MADISON - URBAN DESIGN COMMISSION SUBMITTAL








Sheet Title:
MAIN FLOOR PLAN

| Revisions | | | |
|-----------|------|-------------|----|
| No. | Date | Description | By |
| | | | |
| | | | |
| | | | |

| | |
|--------------------------|------------------------------|
| Project Number: 2853 | Drawn By: Brian R. |
| Date Issued: 08/15/07 | Reviewed By: RICH LUNDEEN |

Sheet Number:
A1.1

Legend

-  Proposed Major Tree
Ginkgo biloba (Ginkgo)
Fraxinus americana 'Autumn Purple' (Autumn Purple Ash)
-  Proposed Minor Tree
Amelanchier x grandiflora (Apple Serviceberry)
Cercis canadensis (Eastern Redbud)
-  Proposed W.I. Fence Section with Brick Piers
-  Proposed Evergreen Shrub
Taxus x media 'Tauntonif' (Taunton Yew)
-  Proposed Deciduous Shrub
Hydrangea arborescens 'Annabelle' (Annabelle Hydrangea)
-  Proposed Perennial Bed/Groundcover
Euonymus fortunei (Wintercreeper)
Vinca minor (Periwinkle)
-  Proposed Rain Garden

