



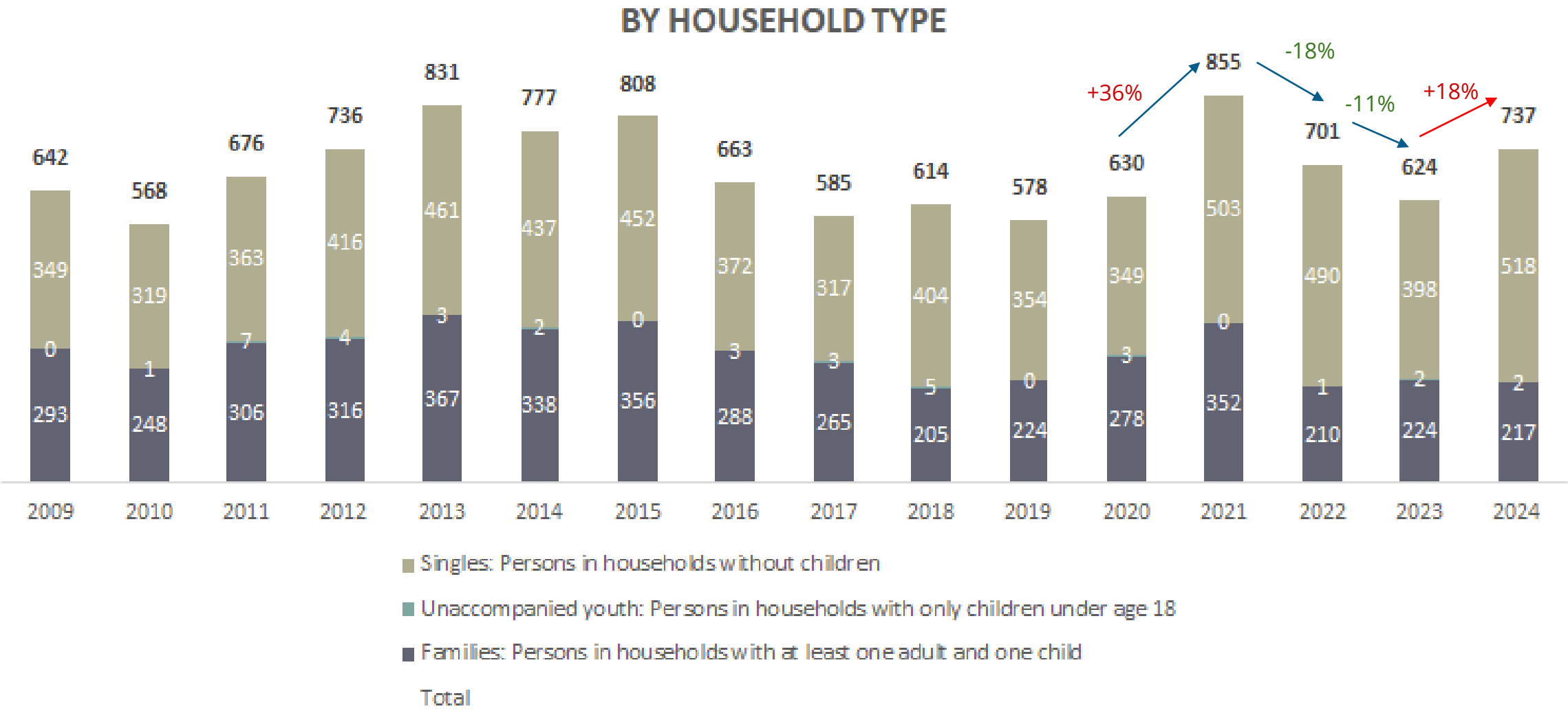
Homeless Services, Eviction Prevention & MadCAP (Madison Customer Assistance Program).

Common Council
July 2, 2024

HUD Definitions of Homelessness

- **Category 1 Literally Homeless** : staying unsheltered or at emergency shelter or transitional housing - tracked in PIT, HUD annual number; eligible for Permanent Supportive Housing and Rapid Rehousing programs
- **Category 2 Imminent Risk of Homelessness**: losing primary residence within 14 days
- **Category 3 Homeless Under Other Federal Statutes**: Unaccompanied youth under 25 years of age, or families with Category 3 children and youth, who do not otherwise qualify as homeless under this definition.
- **Category 4 Fleeing/Attempting to Flee Domestic Violence**
- **At Risk of Homelessness**

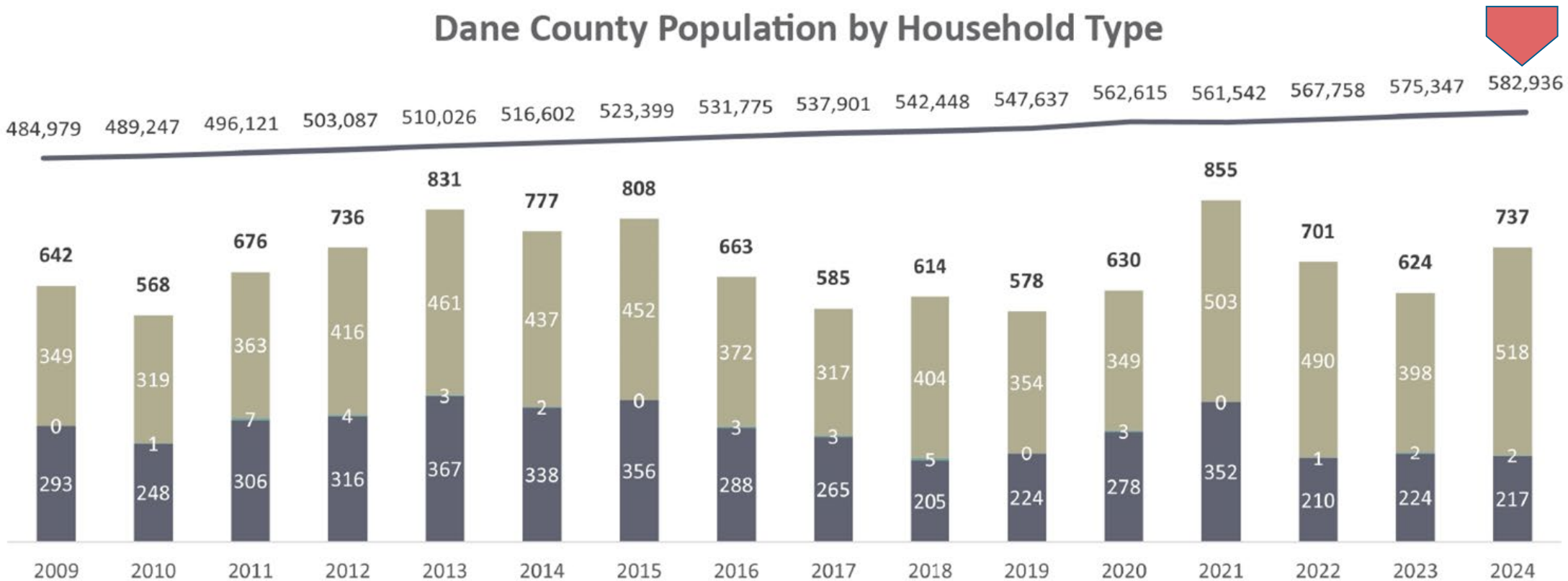
PIT 2009-2024: By Household Type



Considering the Dane County Population

20% increase
from 2009

Dane County Population by Household Type



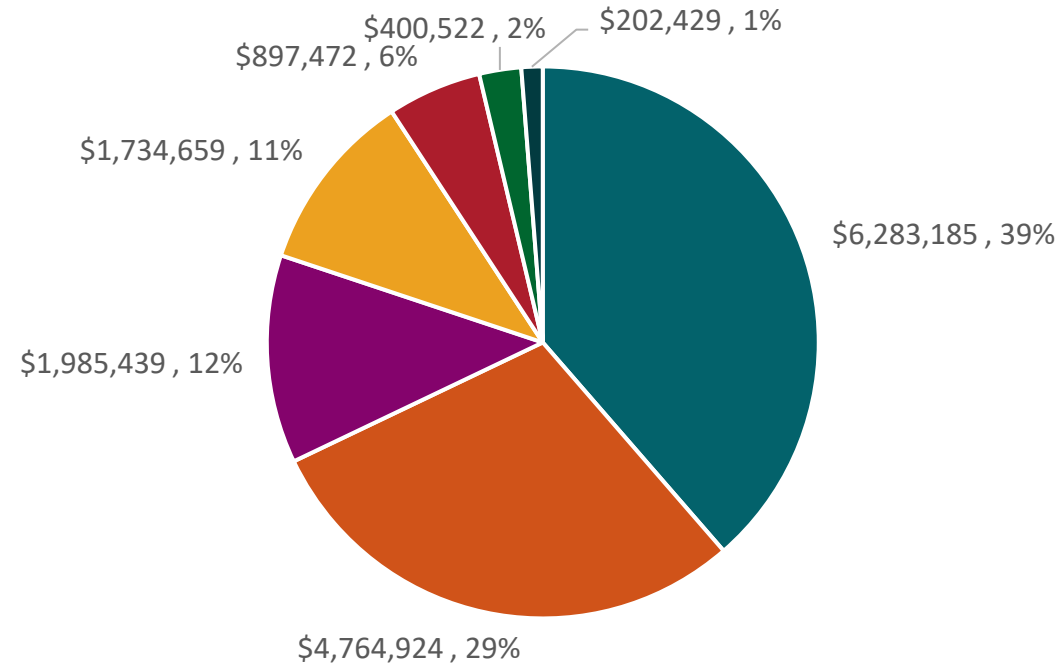
13.24 per
10,000 people

■ Singles: Persons in households without children
■ Unaccompanied youth: Persons in households with only children under age 18
■ Families: Persons in households with at least one adult and one child
Total — Population growth in Dane County

12.64 per
10,000 people

Homeless Services Funding – All Sources

2024 Homeless Services Funding
(**without** Federal COVID Funds)



■ HUD Continuum of Care ■ Dane County GPR ■ City of Madison- Levy ■ United Way of Dane County ■ State EHH ■ FEMA ■ City of Madison ESG

FY2023 System Performance Overview



3,090

HOUSEHOLDS



4,170

PEOPLE

164

Days Homeless

Average cumulative days homeless

23%

Exits

Exits to permanent destinations

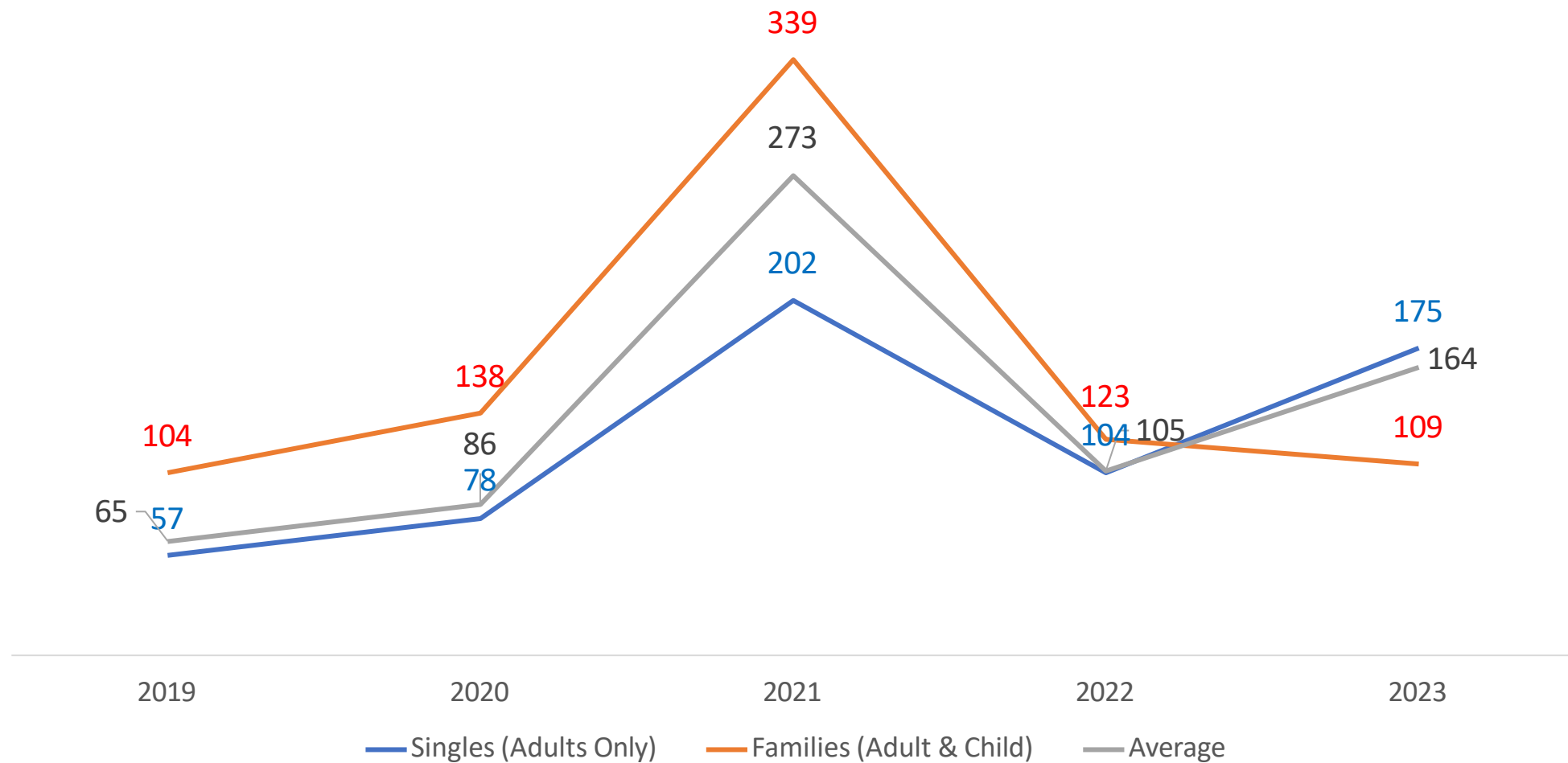
8%

Returns

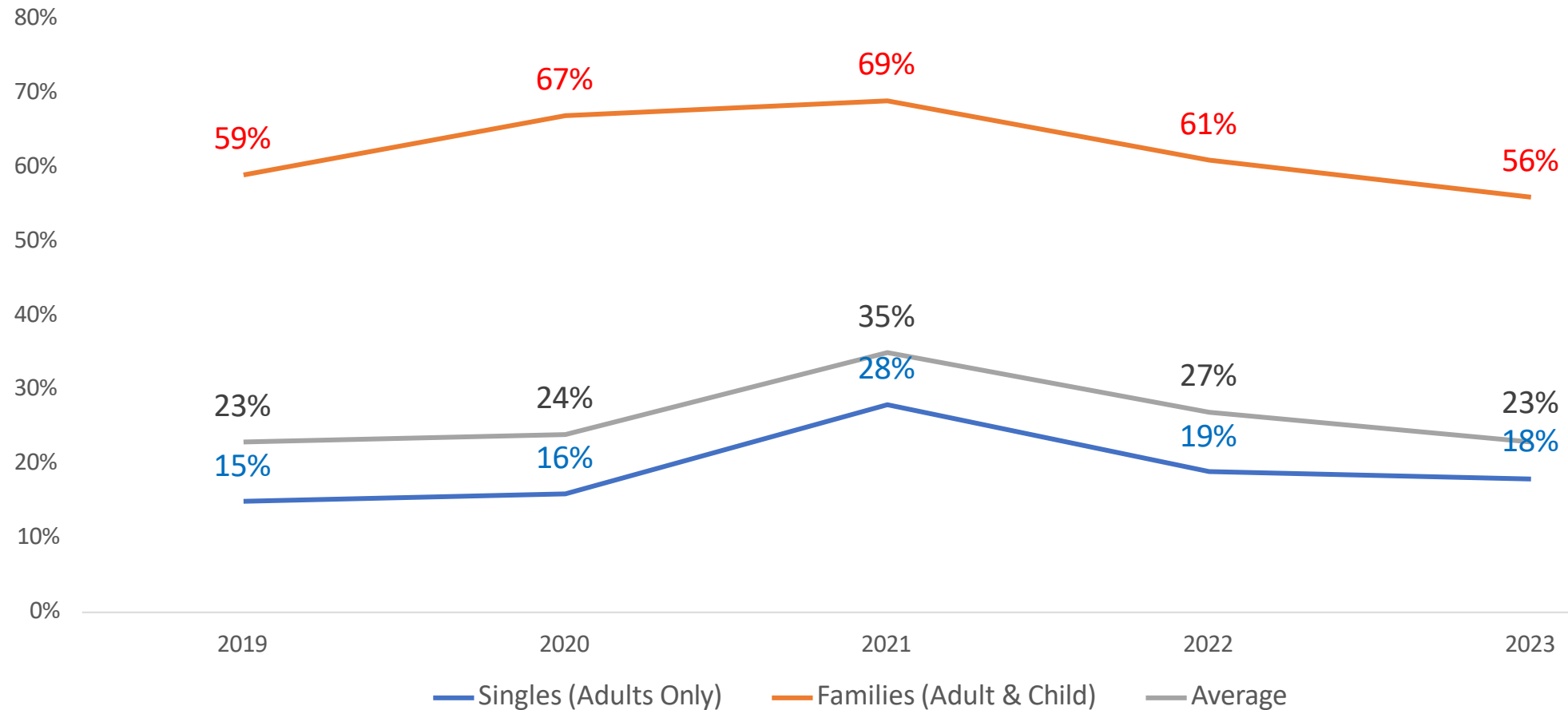
Returns after exits to permanent destinations

FY2023: October 1, 2022 – September 30, 2023

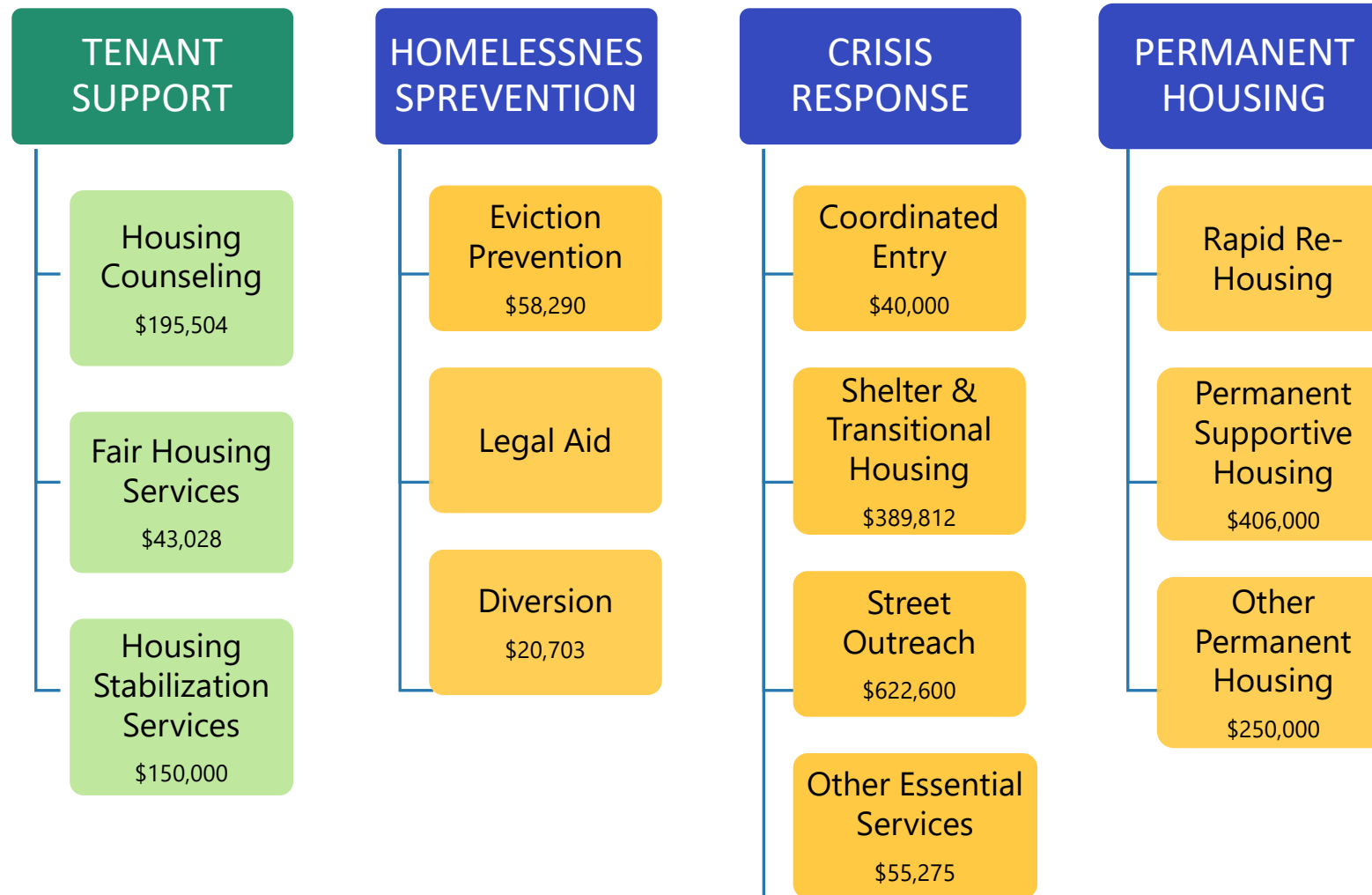
Days Homeless



Exit to Permanent Destinations



Tenant Support and Homeless Services System



Dane CoC Crisis Response System

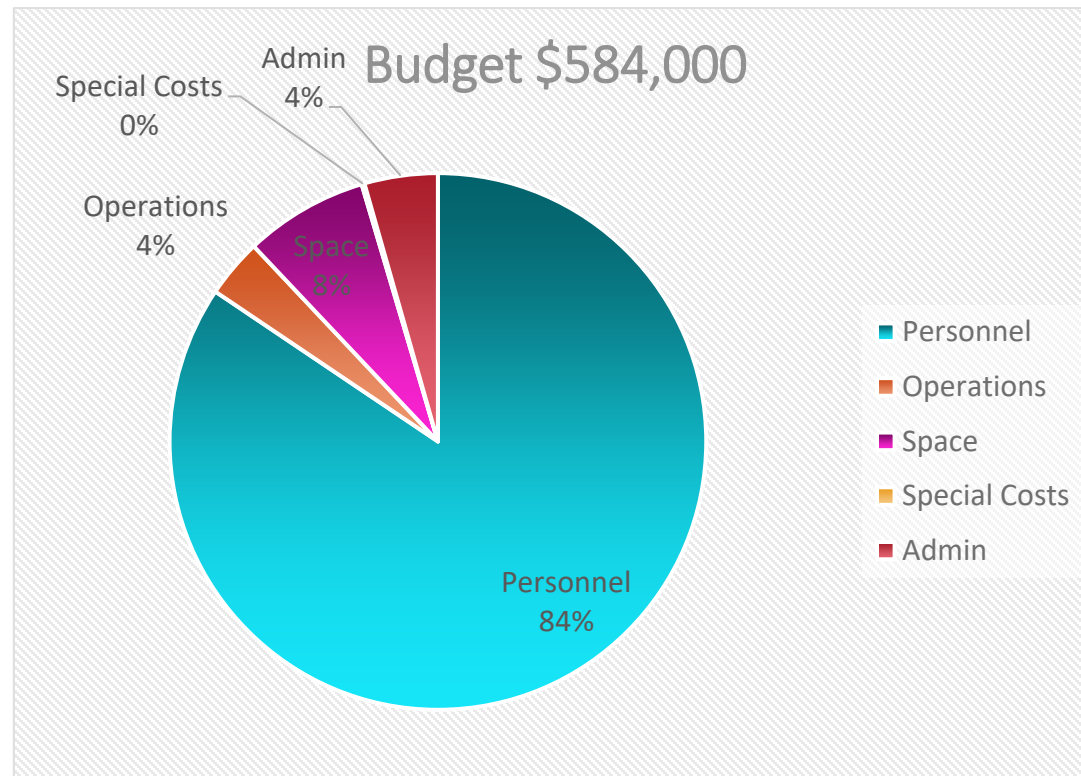
- Emergency Shelters for Families
 - Salvation Army Family Shelter: approx. 35 families, open 24/7, manages a community waitlist
 - YWCA Family Shelter: approx. 11 families, open 24/7, draws from the Salvation Army waitlist
- Emergency Shelters for Singles
 - Porchlight Men's Shelter: approx. 250 men nightly, overnight only, no waitlist
 - Salvation Army Women's Shelter: approx. 60 women nightly, overnight only, no waitlist
- Day Resource Center
 - Beacon Day Resource Center: approx. 200 individuals daily, open 8am-5pm

Dane CoC Crisis Response System (cont.)

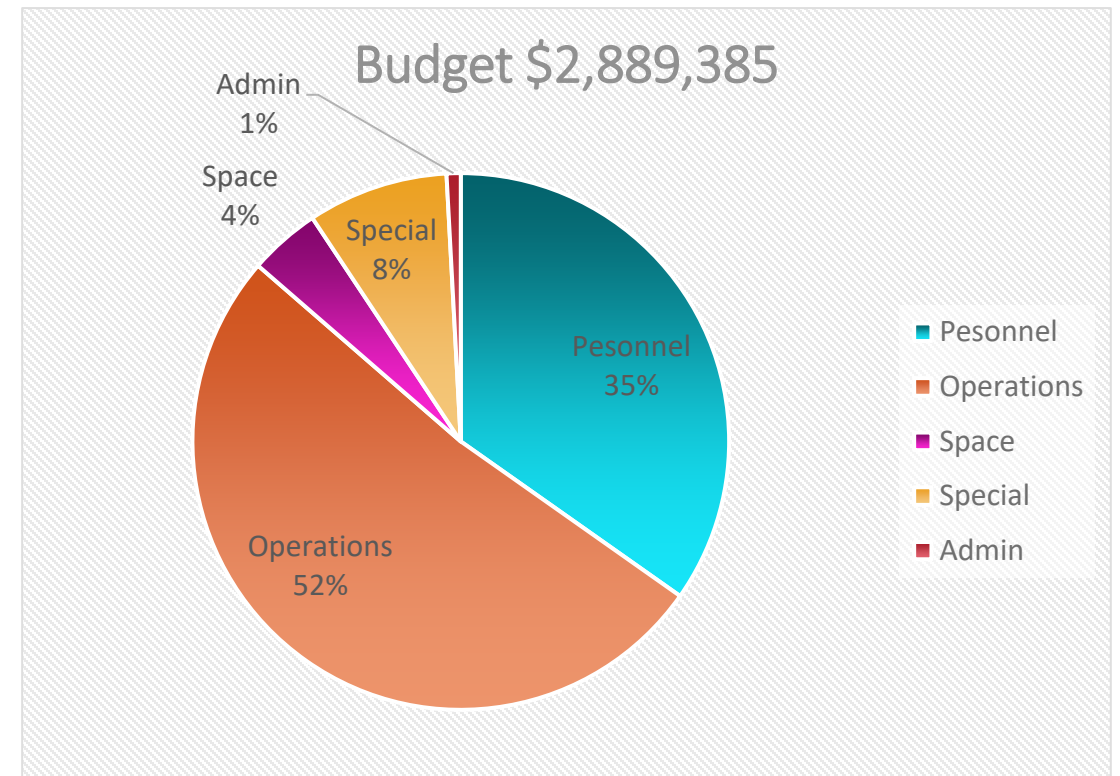
- Urban Campground as Alternative to Shelter – Singles Only
- Dairy Drive – Madison Street Medicine & Kabba Recovery Services: 29 pallet shelters set up by the City
- Severe Weather Response Respite Hotel
- Temporary shelter for unsheltered individuals and families during extreme weather conditions, average stay 3 days
- Street Outreach Teams
- Two agencies contract with the City
- Additional agency teams funded by the County, State and federal resources
- Weekly coordination meetings involving all funded agencies

Men's Shelter Operating Budget

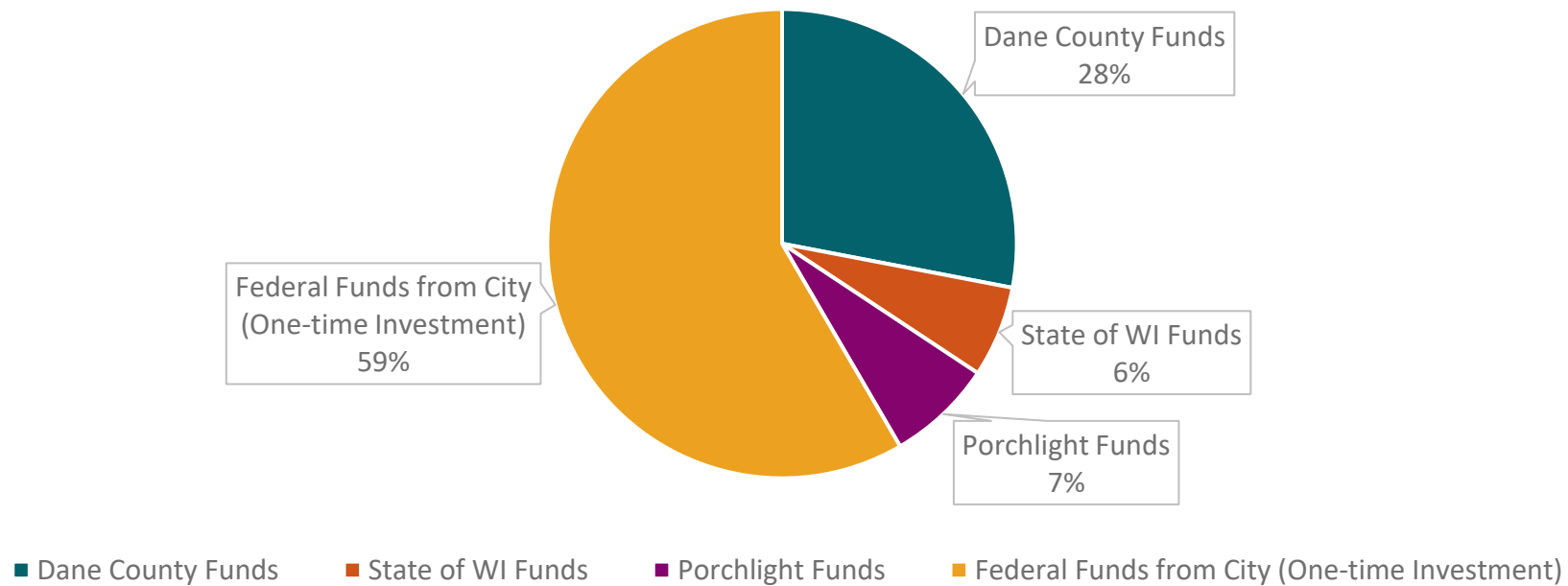
2019 Expenses (pre-pandemic)



2024 Expenses



2024 Funding Sources for Operations





Funded with Federal Emergency Rental Assistance



TRC-led Eviction Diversion and Defense Partnership – supports tenants in Dane County facing eviction actions. Seeks to ensure housing stability by providing housing support, housing counseling, court navigation, mediation services, and rental assistance.

Receives ERA support through both City and County.

Tenants whose housing stability is at risk referred to partner attorneys who provide free legal representation.

More Information:

<https://eddp.tenantresourcecenter.org/>



Funded with Federal Emergency Rental Assistance



Number of Households Served To Date: 1,601

Total Direct Assistance To Date: \$11,574,544

All Emergency Rental Assistance Funds must be disbursed by September 30, 2025



What is MadCAP?

- MadCAP assists income-eligible households by providing up to a **\$30** monthly credit (discount) on their Municipal Services Bill.
- The MadCAP program credit spreads across all **six** municipal services on customer bills:
 - Water, sewer, stormwater, urban forestry, resource recovery, and landfill.

Eligibility Requirements

1. Be a residential customer with the Municipal Services Bill in their name **and** participate in one of two conservation programs.
2. Household income \leq **50%** area median income (HUD guidelines)

Number of People in Household	Income Limit
1	\$44,100
8	\$83,100



MadCAP

Madison Customer Assistance Program



Current Enrollment

Applications received	455
Applications approved	303
- Homeowners	202
- Renters	101

Contacts & Resources

Madison Municipal Services

119 E Olin Avenue, Madison, WI 53713

(608) 266-4651

madcap@cityofmadison.com

Website: cityofmadison.com/water

- Program information
- Applications (**English, Spanish, Hmong, Chinese**)