

CLG Consulting Party Review
 Madison Bus Rapid Transit
 September 20, 2021



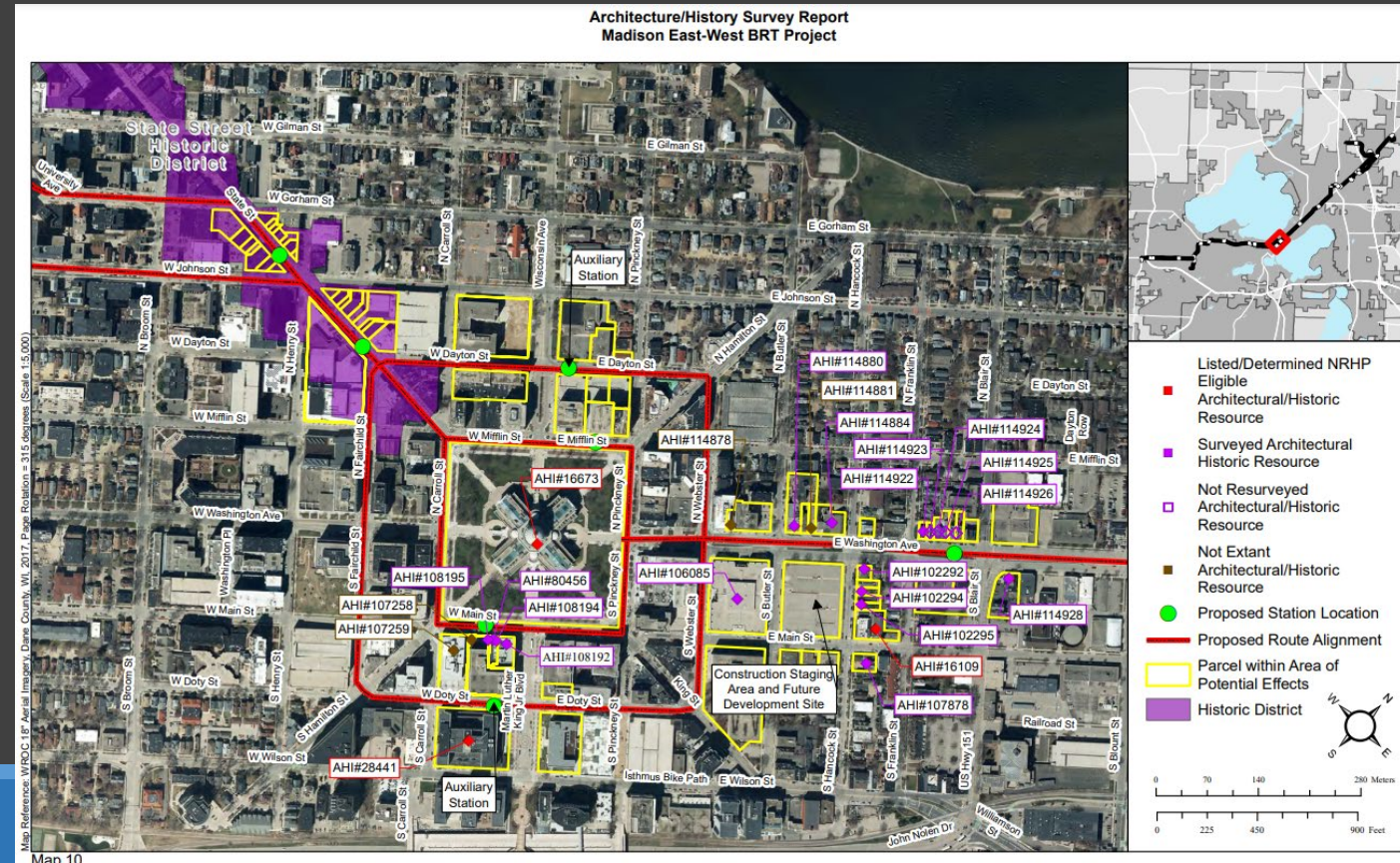
Proposed Work

- Proposed BRT stations have potential impacts to several National Register listed or eligible properties.
 - University Hill Farms historic district
 - Bascom Hill historic district
 - State Street eligible historic district
 - Wisconsin State Capitol (NHL)
 - Gisholt Machine Company building
 - East High School



Section 106 Process

1. Identify Area of Potential Effect (APE)
2. Identify historic properties within APE
3. Assess potential effects



University Hill Farms historic district



Adjacent to Bascom Hill historic district



State Street eligible historic district



Wisconsin State Capitol



Gisholt Machine Company



East High School



CLG Consulting Party Comments

The Landmarks Commission needs to determine if

- The proposal would meet the criteria for an Adverse Effect*
- The commission needs additional information to make a determination
- There are methods to mitigate the visual impacts, which the commission may suggest



Next Steps

When the project has completed their assessment of effects on historic properties, the Landmarks Commission will review that document and provide final comments as one of the consulting parties.



Applicable Standards

36CFR800.5(a)(1):

“Criteria of adverse effect. An adverse effect is found when an undertaking may **alter, directly or indirectly, any of the characteristics of a historic property** that qualify the property for inclusion in the National Register in a manner that **would diminish the integrity of the property's location, design, setting, materials, workmanship, feeling, or association**. Consideration shall be given to all qualifying characteristics of a historic property, including those that may have been identified subsequent to the original evaluation of the property's eligibility for the National Register. Adverse effects may include reasonably foreseeable effects caused by the undertaking that may occur later in time, be farther removed in distance or be cumulative.”



Staff Recommendation

- Station designs will
 - read as a product of their time
 - not create a false sense of history
 - not obscure significant viewsheds
 - not alter historically significant street designs
- Recommend forwarding the preservation file for 841-849 E Washington & LC demo review

