



ST. PAUL
CATHOLIC
CENTER

STATE
CAPITOL
BUILDING

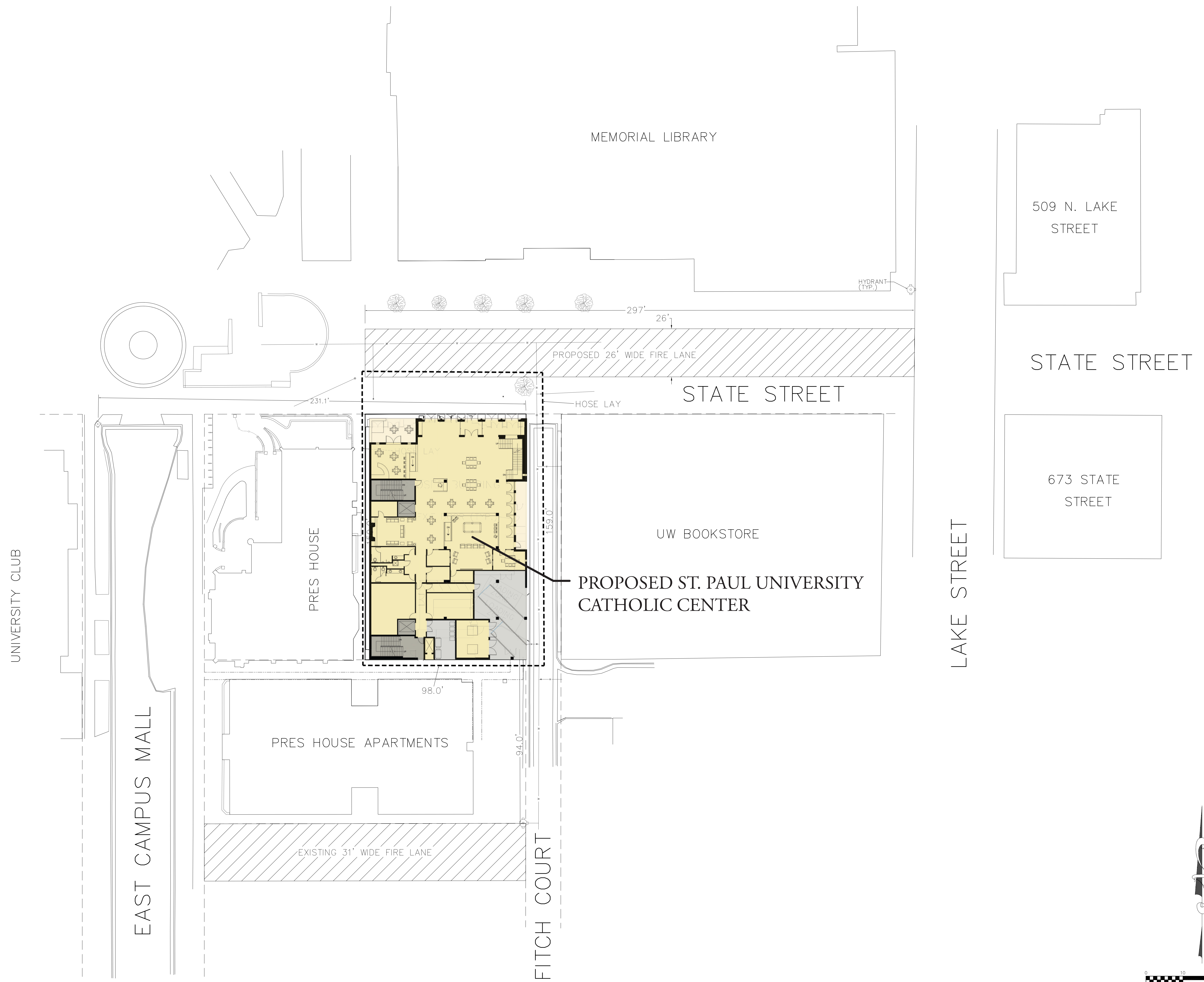
EAST CAMPUS MALL

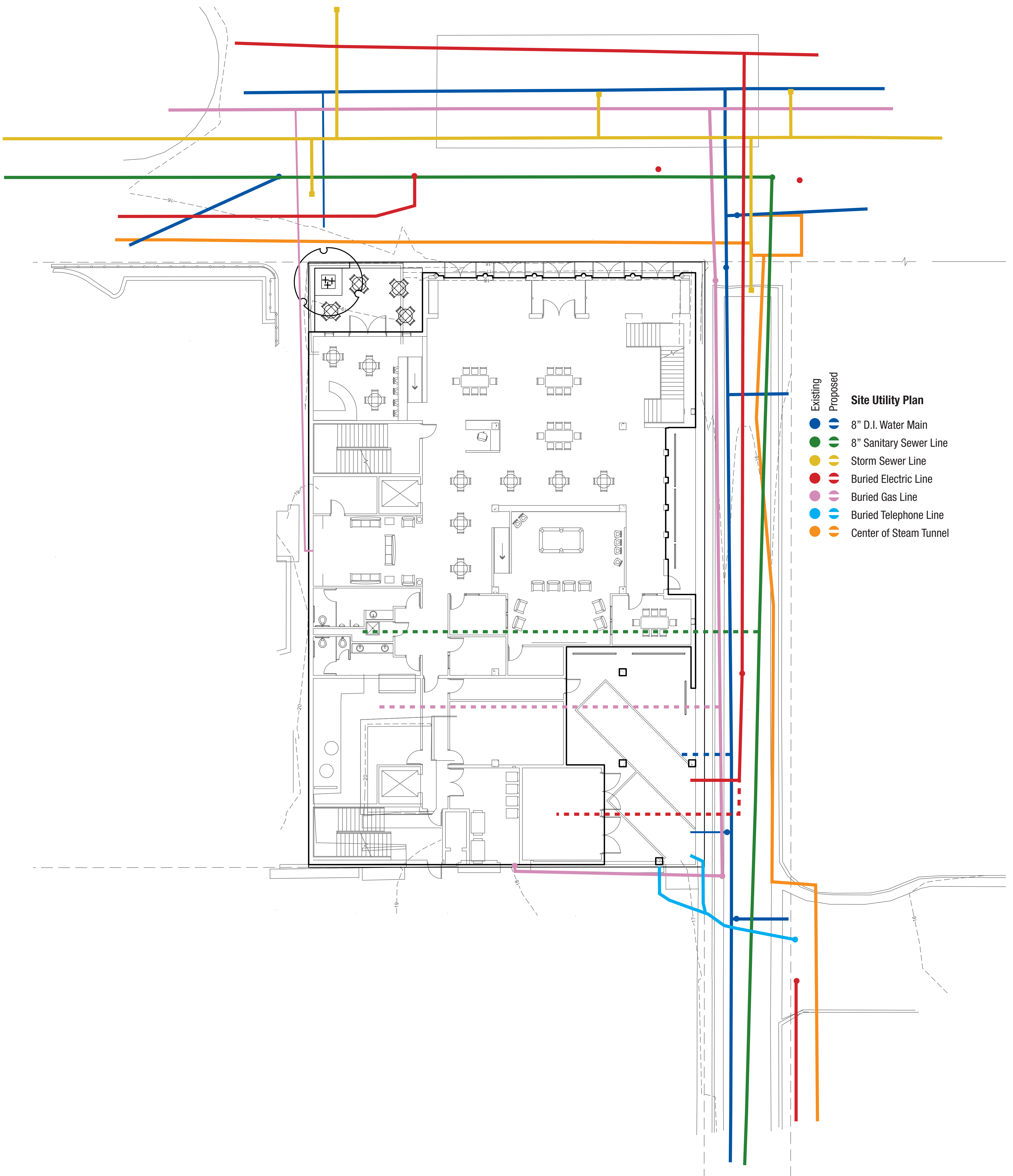
STATE STREET

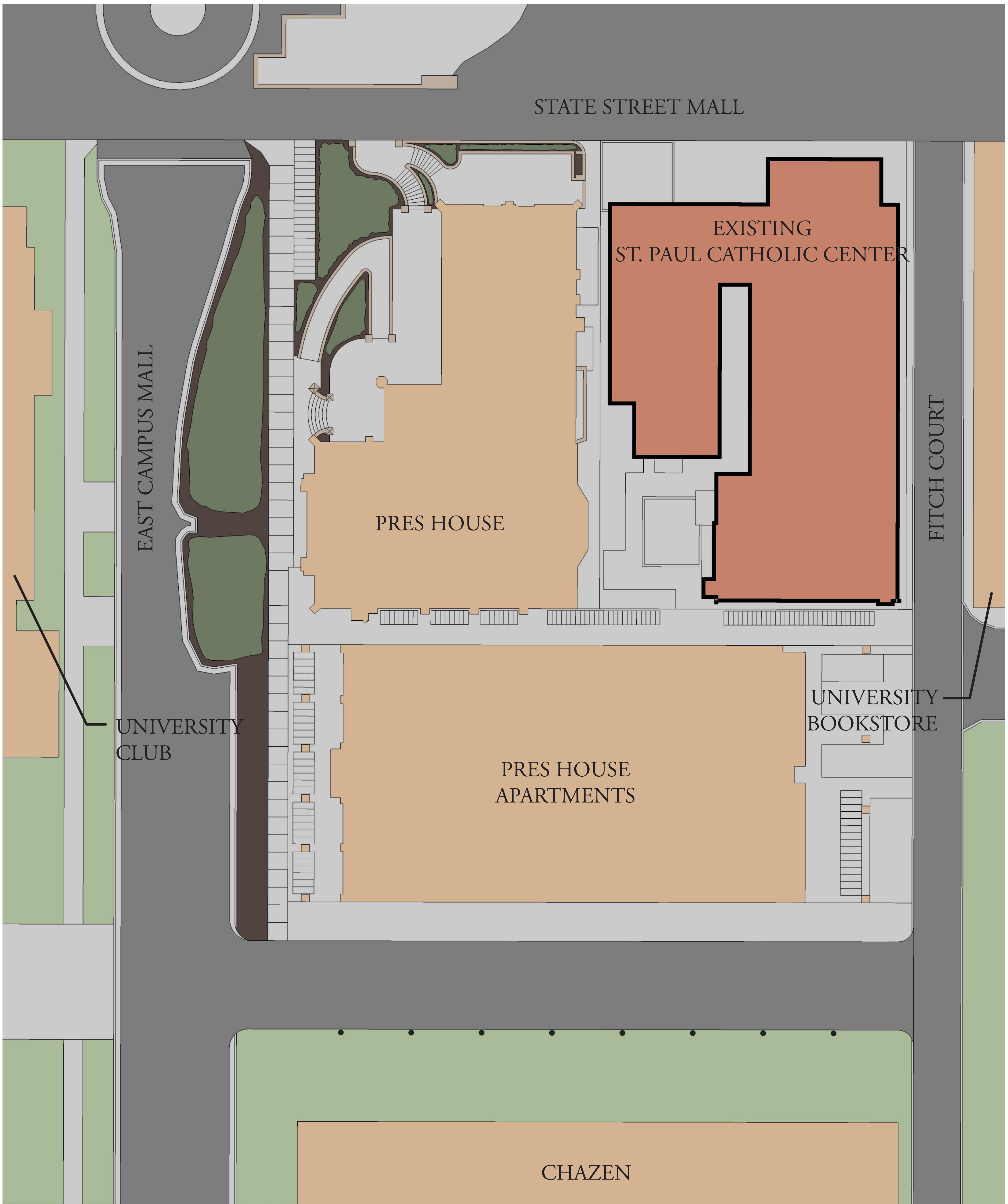
UNIVERSITY AVE

N LAKE STREET





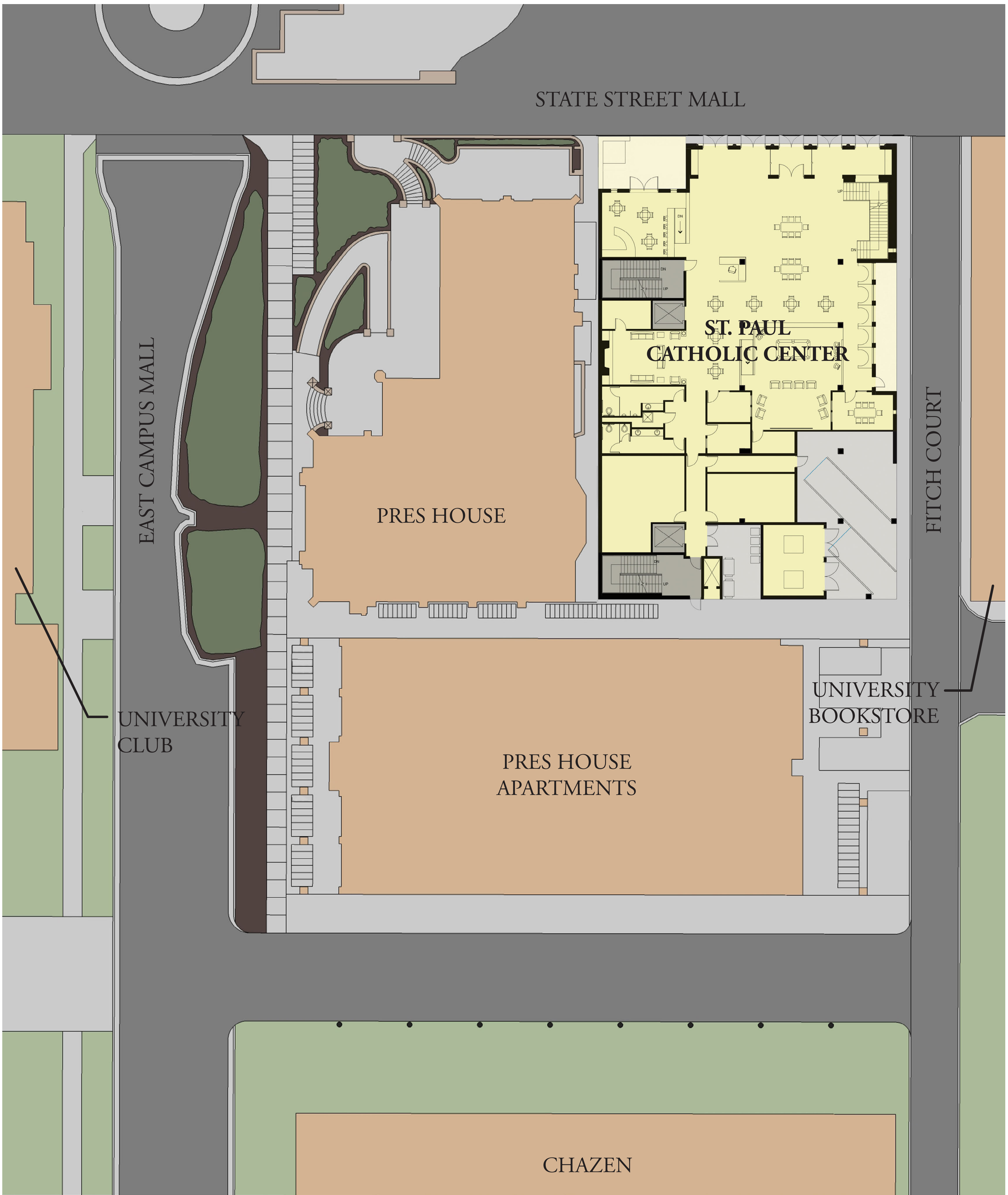




ST. PAUL University Catholic Center

Existing Site Plan

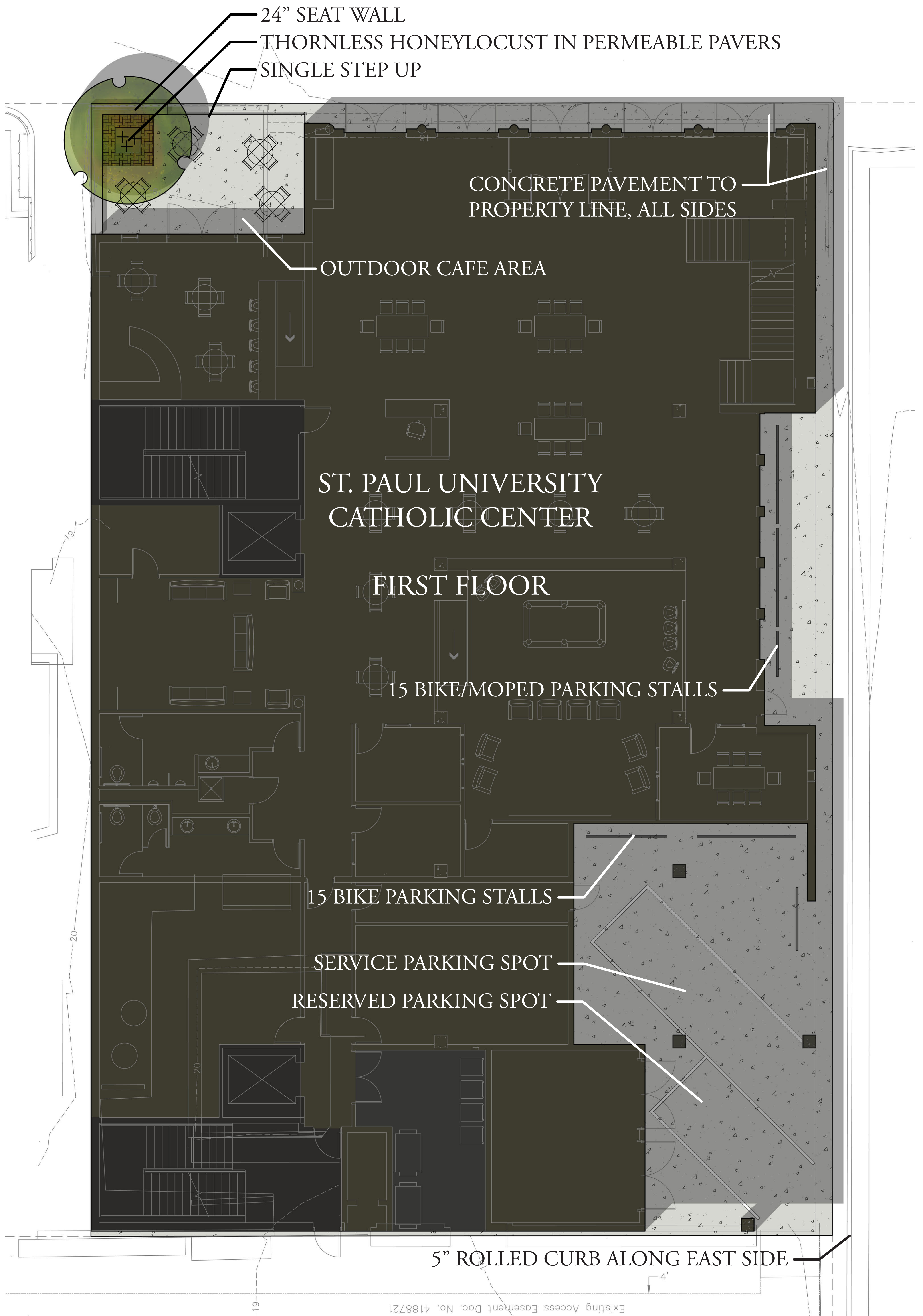
November 14, 2011



ST. PAUL University Catholic Center

Proposed Site Layout

November 14, 2011



ST. PAUL University Catholic Center

Site Layout

November 14, 2011



WITH SMALL LEAVES AND OPEN BRANCHING STRUCTURE, THE THORNLESS HONEYLOCUST IS AN IDEAL STREET TREE. IT PROVIDES DAPPLED SHADE, IMPRESSIVE YELLOW FALL COLOR, AND MINIMAL LEAF CLEAN UP IN THE FALL.

THORNLESS HONEYLOCUST - GLEDITSIA TRIACANTHOS 'INERMIS'



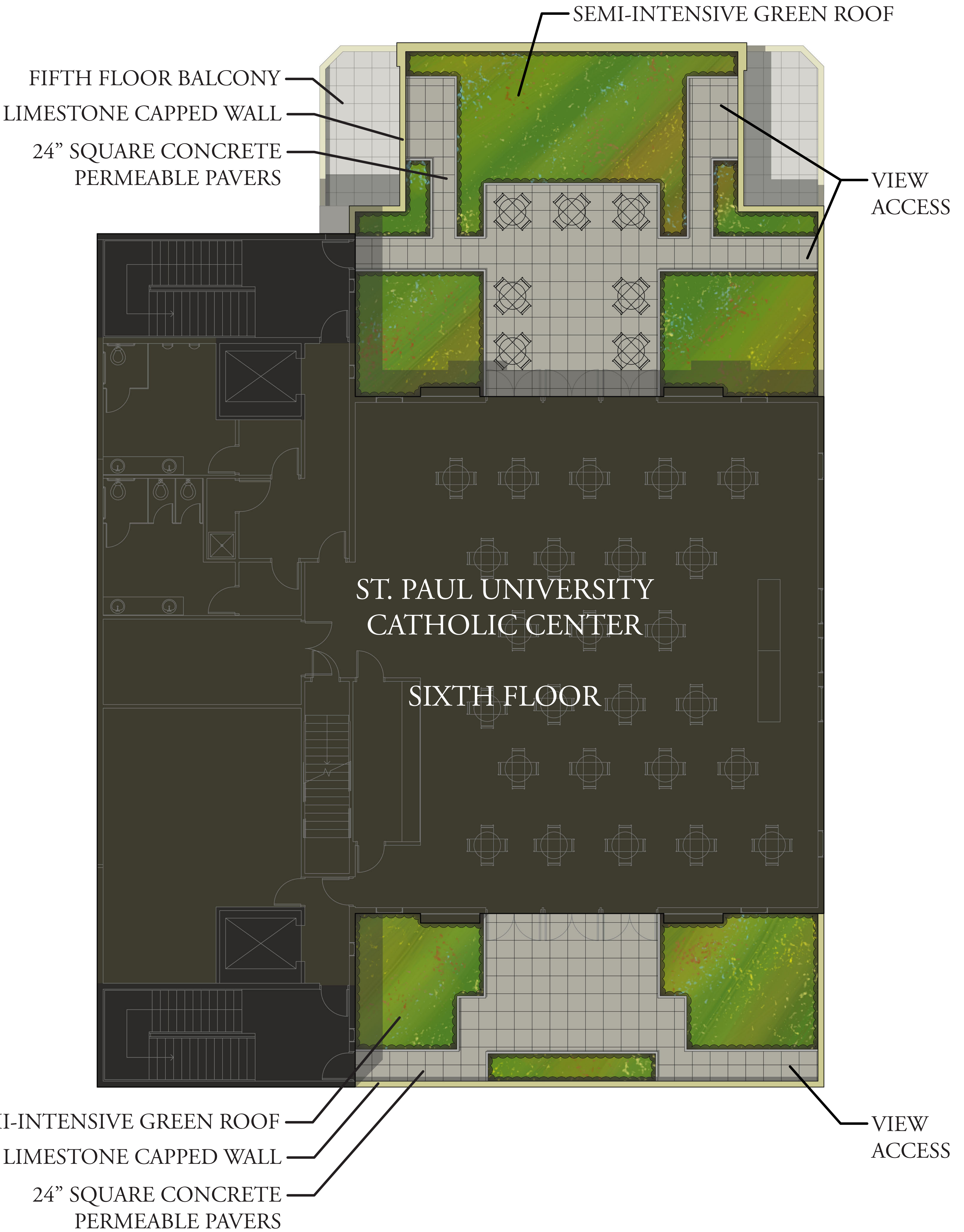
PLACED IN A 6' SQUARE AROUND THE TREE, WITH A 3' SQUARE OPENING FOR THE TRUNK, PERMEABLE PAVERS WILL INCREASE PATIO AREA WHILE ALLOWING WATER TO REACH THE TREE ROOTS. COLOR OF PAVERS WILL COMPLIMENT THE COLORING OF THE BUILDING.

PERMEABLE CONCRETE PAVERS



KEEPING WITHIN THE SAME AESTHETIC QUALITY OF OTHER UNIVERSITY OF WISCONSIN BIKE RACKS, THE DERO 'CAMPUS' BIKE RACK ALLOWS PARKING FOR BOTH BIKES AND MOPEDS. POWDERCOAT COLOR WILL MATCH THE BUILDING.

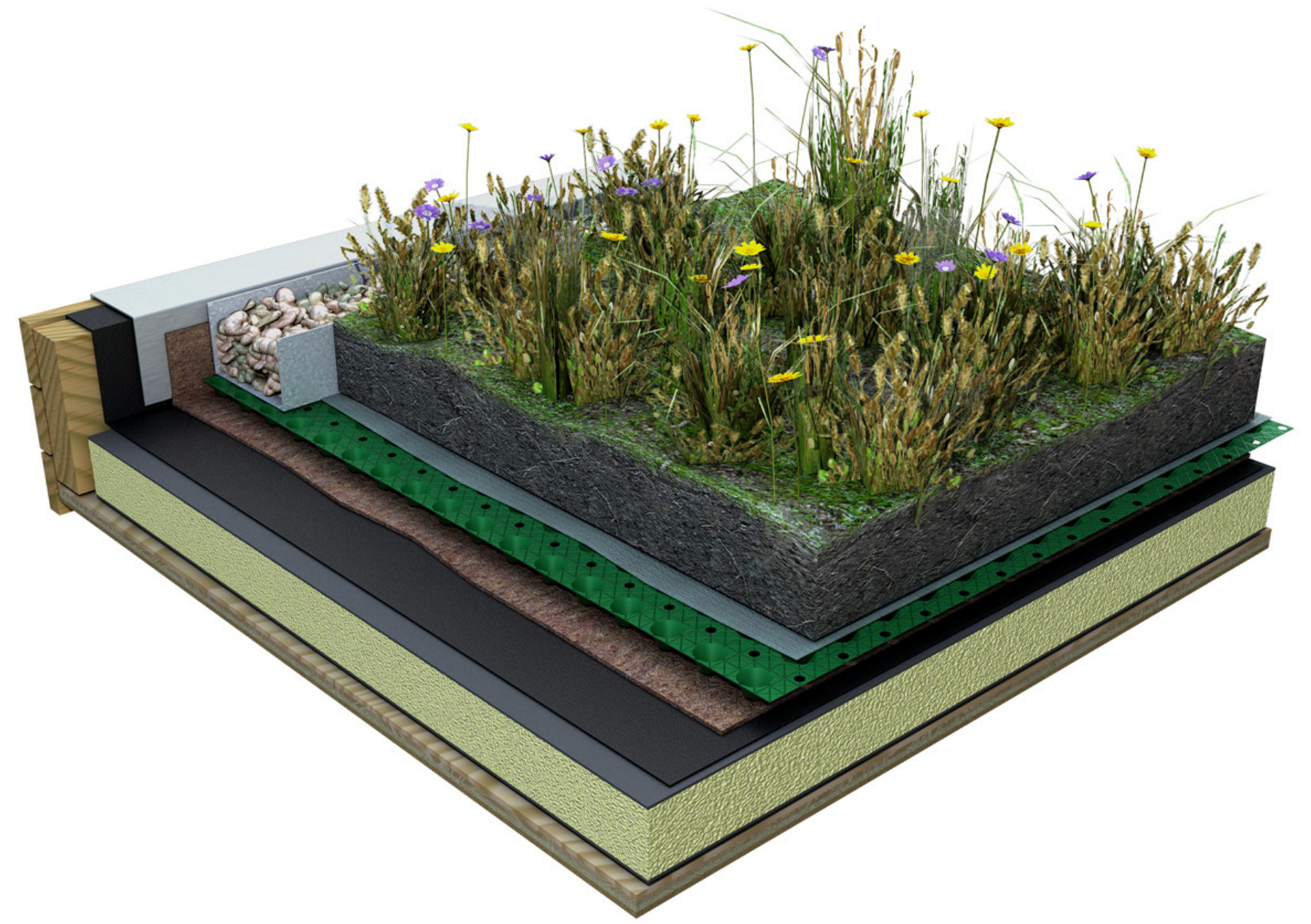
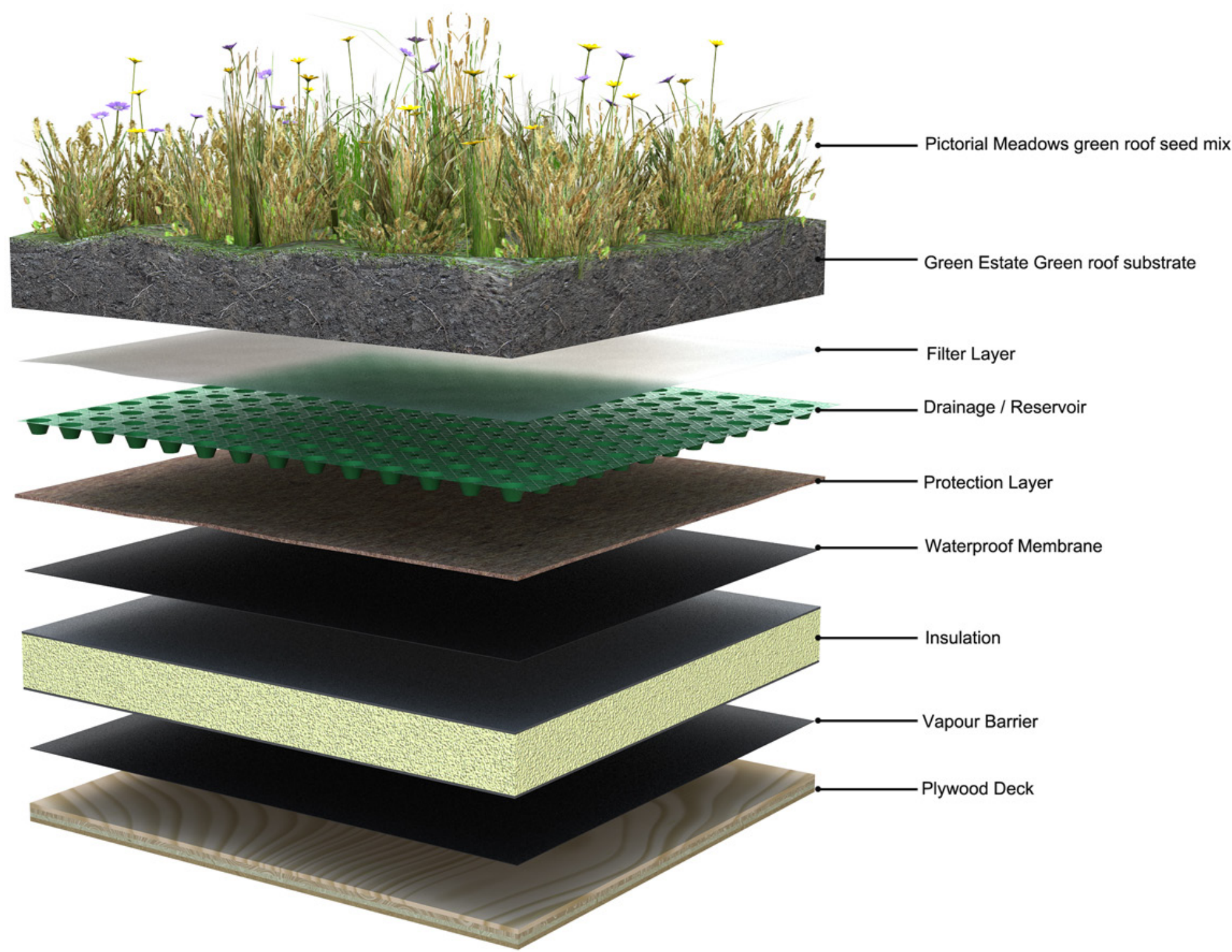
DERO 'CAMPUS' BIKE RACK



ST. PAUL University Catholic Center

Roof Garden Layout Plan

November 14, 2011



THE GREEN ROOF WILL UTILIZE A SEMI-INTENSIVE GREEN ROOF SECTION. SEMI-INTENSIVE REFERS TO THE SOIL MEDIUM - TYPICALLY 6 - 12" - WHICH ALLOWS FOR VARIED NATIVE PERENNIALS AND EVEN SMALL SHRUBS. THE ILLUSTRATIONS ABOVE, CREATED BY ALEX JOHNSON, SHOW A TYPICAL SEMI-INTENSIVE CROSS SECTION.

SEMI-INTENSIVE GREEN ROOF SECTION



GREEN ROOF PLANTS SAMPLING OF NATIVE WISCONSIN GREEN ROOF PLANTS: LITTLE BLUESTEM, PRAIRIE DROPSEED, BUTTERFLY MILKWEED, SIDEOATS GRAMA, PRAIRIE BLAZING STAR



24" x 24" CONCRETE PAVERS ARE USED ON THE GREEN ROOF TO PROVIDE SAFE PEDESTRIAN ACCESS. THE PAVERS ARE SPACED 1/4" APART TO ALLOW WATER TO DRAIN AND ENTER THE ROOT ZONE OF THE ADJACENT PLANTS. COLOR FOR THE 24" SQUARE PAVERS WILL COMPLIMENT THE BUILDING.

PERMEABLE CONCRETE PAVERS