

PROJECT LOCATION
East Springs Drive

SHEET INDEX

- TS1.1 TITLE SHEET
- DP-1.0 OVERALL DEVELOPMENT PLAN
- DP-1.1 AERIAL PHOTO - DEVELOPMENT (11x17 only)
- DP-1.2 COMMERCIAL SITE PLAN (11x17 only)
- DP-1.3 CONTEXT PHOTOS (11x17 only)
- C1.0 SITE PLAN
- C1.1 SITE GRADING, UTILITY, STORMWATER PLAN
- L-1.0 LANDSCAPE PLAN
- C3.1 SITE LIGHTING PLAN
- C3.2 SITE LIGHTING FIXTURES
- A1.1 FLOOR PLAN
- A2.0 ELEVATIONS
- A2.1 ELEVATIONS
- A3.0 SITE SECTIONS (11x17 only)
- A3.1 SITE RENDERING (11x17 only)
- A3.2 SITE RENDERING (11x17 only)

REVISIONS:	
REV-1	01-30-2013
REV-2	03-27-2013
REV-3	04-12-2013

DATE: 12-19-2012
SCALE: -
PROJECT: K1214
DRAWN BY: KAC
DRAWING NAME:

TITLE SHEET

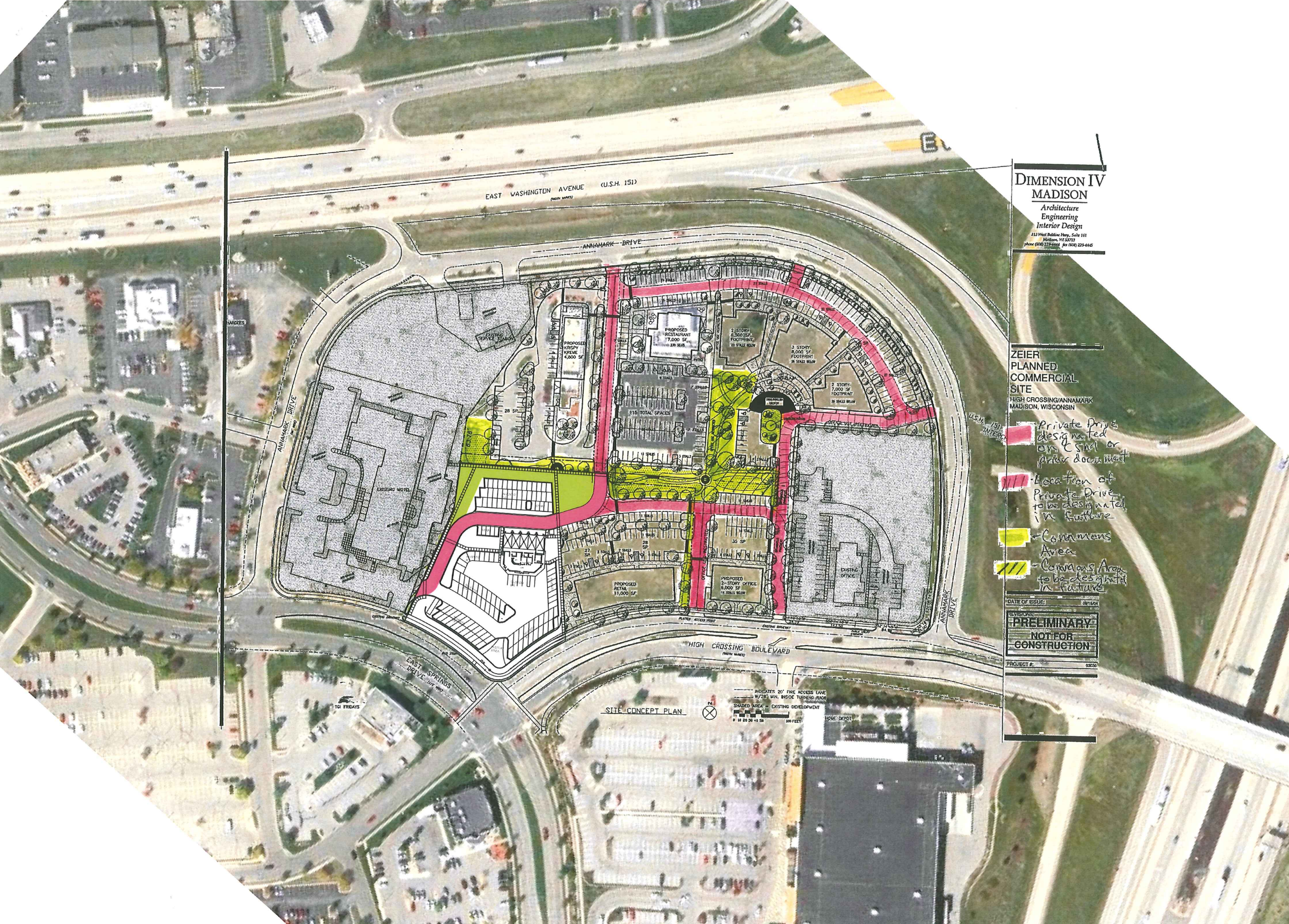
DRAWING NUMBER:

TS1.1

Goben CARS
East Springs Drive
Madison, Wisconsin

Goben Cars

East Springs Drive
Madison, Wisconsin



DIMENSION IV MADISON

Architecture
Engineering
Interior Design
313 West Babbler Hwy., Suite 161
Madison, WI 53713
Phone (608) 223-4414 Fax (608) 223-4415

ZEIER
PLANNED
COMMERCIAL
SITE
HIGH CROSSING/ANNAMARK
MADISON, WISCONSIN

- Private Drive Designated on CSAM or prior document
- Location of Private Drive to be designated in future
- Commons Area
- Commons Area to be designated in future

DATE OF ISSUE:	03/20/13
REVISIONS:	
PRELIMINARY	
NOT FOR CONSTRUCTION	
PROJECT #:	03000

REVISIONS:	
#1	1/30/2013
#2	3/27/2013

DATE: 27 MARCH 2013
SCALE: NTS
PROJECT: K1214
DRAWN BY: ASH
DRAWING NAME:

OVERALL
DEVELOPMENT PLAN

DRAWING NUMBER:
DP-1.0

Goben Cars

East Springs Drive
Madison, Wisconsin

REVISIONS:

#1	1/30/2013
#2	3/27/2013

DATE: 27 MARCH 2013
SCALE: POINTS
PROJECT: K1214
DRAWN BY: ASH
DRAWING NAME:

AERIAL PHOTO
DEVELOPMENT

DRAWING NUMBER:

DP-1.1



DIMENSION IV MADISON
Architecture
Engineering
Interior Design
313 West Ridge Parkway, Suite 161
Madison, WI 53713
phone (608) 229-4444 fax (608) 229-4445

ZEIER PLANNED COMMERCIAL SITE
HIGH CROSSING/ANNAMARK
MADISON, WISCONSIN

- Private Drive designated on CSNI or prior document
- Location of Private Drive to be designated in future
- Commons Area
- Commons Area to be designated in future

DATE OF ISSUE: 09/16/04

REVISIONS:
PRELIMINARY
NOT FOR CONSTRUCTION

PROJECT #: 03030

INDICATES 20' FIRE ACCESS LANE
W/28' MIN. INSIDE TURNING RADIUS
SHADED AREA = EXISTING DEVELOPMENT
0 10 20 30 40 50 100 FEET
HOWE DEPOT

SITE CONCEPT PLAN

GOBEN CARS

East Springs Drive
Madison, Wisconsin

REVISIONS:	
#1	1/30/2013
#2	3/27/2013

DATE: 27 MARCH 2013
SCALE: NTS
PROJECT: K1214
DRAWN BY: ASH
DRAWING NAME:

COMMERCIAL SITE PLAN

DRAWING NUMBER:

DP-1.2



1 TOWARD EAST TOWNE
DP1.3 Scale: 1/4" = 1'-0"



2 TOWARD EAST WASH
DP1.3 Scale: 1/4" = 1'-0"



3 LOOKING WEST
DP1.3 Scale: 1/4" = 1'-0"

5 ON EAST SPRINGS
DP1.3 Scale: 1/4" = 1'-0"



4 UP HIGH CROSSING
DP1.3 Scale: 1/4" = 1'-0"



Gobben CARS

East Springs Drive
Madison, Wisconsin

REVISIONS:

#1	1/30/2013
#2	3/27/2013

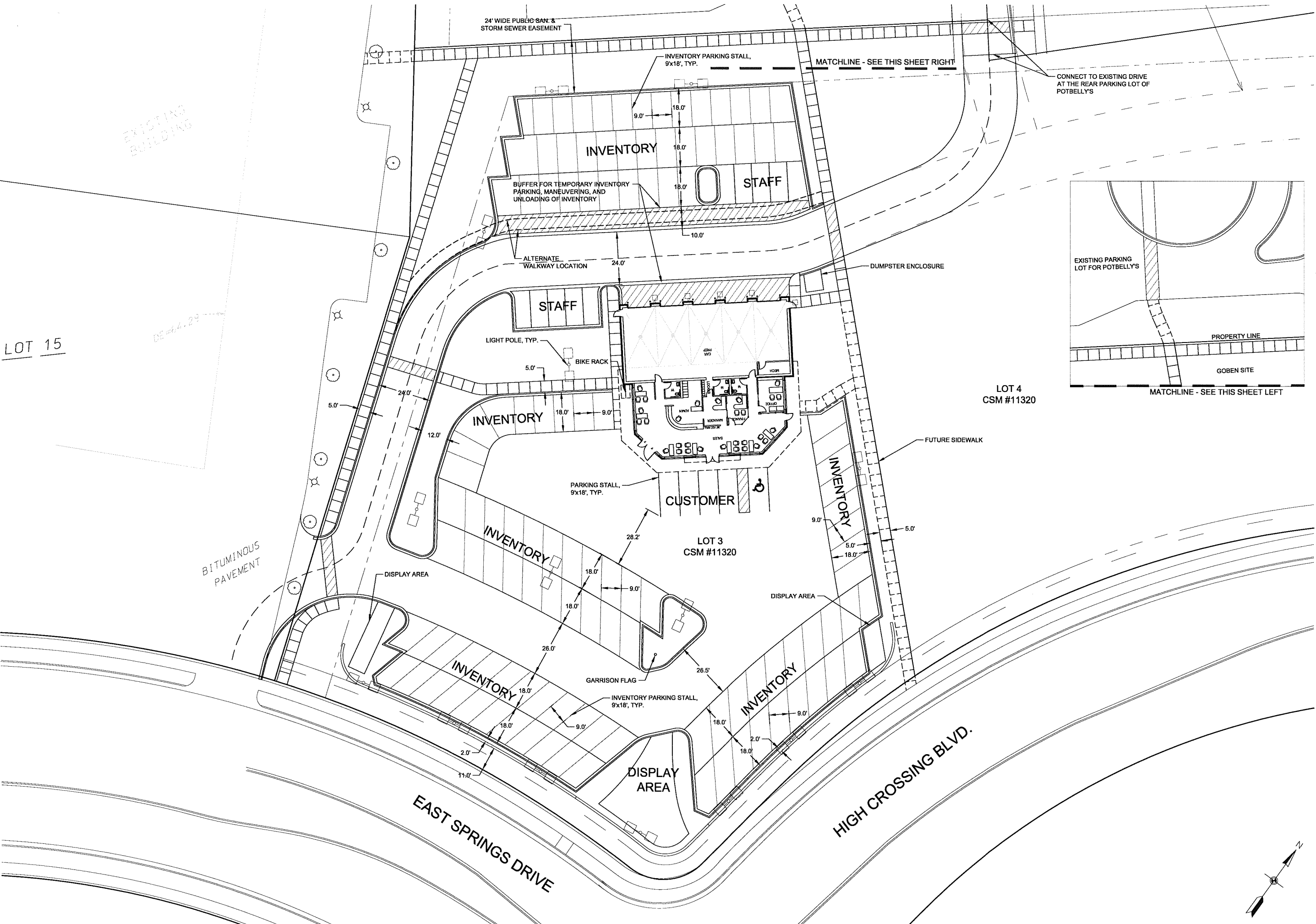
DATE: 27 MARCH 2013
SCALE: NTS
PROJECT: K1214
DRAWN BY: ASH
DRAWING NAME:

CONTEXT PHOTOS

DRAWING NUMBER:
DP-1.3

GOBEN CARS

East Springs Drive
Madison, Wisconsin



REVISIONS:

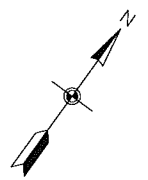
1	01-30-13

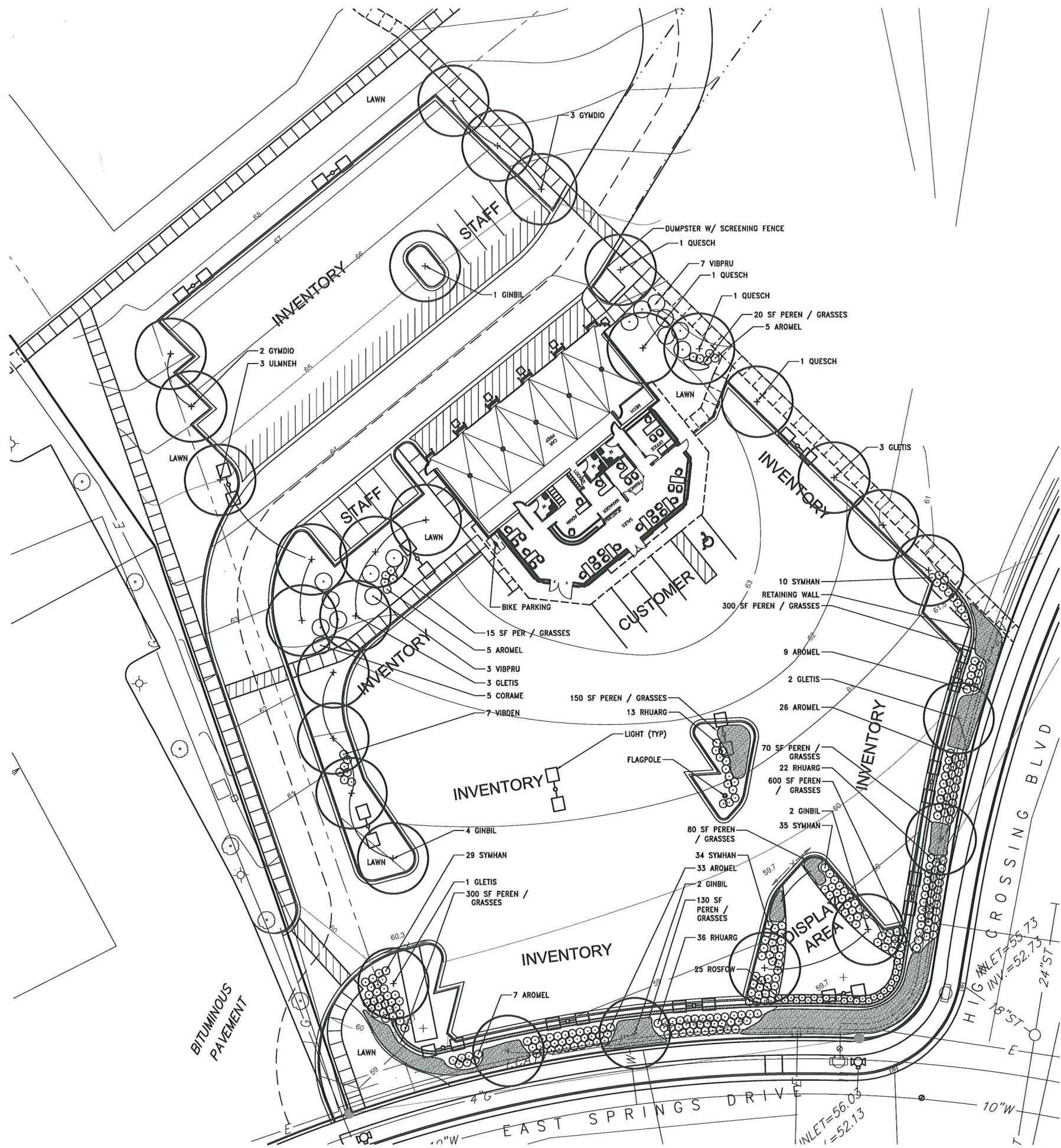
DATE: 03-21-13
SCALE: 1"=20'
PROJECT: K1214
DRAWN BY: JMS
DRAWING NAME:

SITE PLAN

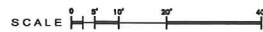
DRAWING NUMBER:

C-1.0





A PLAN
REFER TO GRAPHIC SCALE



Quantity	Key	Scientific Name	Common Name	Size	Root	Spacing
30	TREES					
9	CELOCP	<i>Celtis occidentalis</i> "Prairie Pride"	Prairie Pride Hackberry	2.5" cal.	B&B	Plan
9	GLETIS	<i>Gleditsia triacanthos</i> var. <i>inermis</i> "Skyline"	Thornless Common Honeylocust	2.5" cal.	B&B	Plan
9	GINBIL	<i>Ginkgo biloba</i>	Ginkgo biloba	2.5" cal.	B&B	Plan
5	GYMDIO	<i>Gymnocladus dioica</i> "Expresso"	Expresso Kentucky Coffeetree	2.5" cal.	B&B	Plan
4	QUESCH	<i>Quercus macrocarpa</i>	Bur Oak	2.5" cal.	B&B	Plan
3	ULMNEH	<i>Ulmus</i> x "New Horizon"	Accolade Smoothleaf Elm	2.5" cal.	B&B	Plan
15	SMALL TREES					
	AMEGRA	<i>Amelanchier grandiflora</i>	Apple Serviceberry	4' ht.	B&B	Plan
	CRACIN	<i>Crataegus crus-galli</i> var. <i>inermis</i>	Thornless Cockspur Hawthorn	4' ht.	B&B	Plan
5	CORAME	<i>Corylus americana</i>	American Hazelnut	5 gal.	Cont.	Plan
10	VIBPRU	<i>Viburnum prunifolium</i>	Blackhaw Viburnum	4' ht.	B&B	Plan
286	SHRUBS					
85	AROMEL	<i>Aronia melanocarpa</i>	Black Chokeberry	5 gal.	Cont.	Plan
	CEOAMER	<i>Ceanothus americanus</i>	New Jersey Tea	5 gal.	Cont.	Plan
	PHYOPU	<i>Physocarpus opulifolius</i>	Common Ninebark	5 gal.	Cont.	Plan
71	RHUAGL	<i>Rhus aromatica</i> "Gra-low"	Grow-low Sumac	5 gal.	Cont.	Plan
25	ROSECV	<i>Rosa</i> var. "Noachnee" PP9573	Rosa Flower Carpet White	1 gal.	Cont.	Plan
	SYMPA	<i>Syringa meyeri</i> "Palbin"	Palwin Lilac	5 gal.	Cont.	Plan
108	SYMHAN	<i>Symphoricarpos</i> x <i>chenaultii</i> "Hancock"	Hancock Coralberry	2 gal.	Cont.	Plan
7	VIBDEN	<i>Viburnum dentatum</i>	Azowood Viburnum	5 gal.	Cont.	Plan
900	PERENNIALS					
50	ALLCER	<i>Allium cernuum</i>	Nodding Onion	gal.	Cont.	18"
75	ANECAN	<i>Anemone canadensis</i>	Meadow Anemone	gal.	Cont.	18"
25	ASCTUB	<i>Asclepias tuberosa</i>	Butterflyweed	gal.	Cont.	18"
25	ASTAZU	<i>Aster azureus</i>	Sky Blue Aster	gal.	Cont.	18"
25	CORPAL	<i>Coreopsis palmata</i>	Prairie Coreopsis	gal.	Cont.	18"
50	ECHPUR	<i>Echinacea purpurea</i>	Purple Coneflower	gal.	Cont.	18"
20	EUPMGA	<i>Eupatorium maculatum</i> "Gateway"	Spotted Joe Pye Weed	gal.	Cont.	18"
75	HEURIC	<i>Heuchera richardsonii</i>	Prairie Alum Root	gal.	Cont.	18"
50	LIAPYC	<i>Liatris pycnostachya</i>	Blazing Star	gal.	Cont.	18"
15	MISSGR	<i>Miscanthus sinensis</i> "Gracillimus"	Maiden Grass	gal.	Cont.	18"
40	PANVRO	<i>Panicum virgatum</i> "Rotstahlbusch"	Red Switch Grass	gal.	Cont.	18"
35	PARINT	<i>Parthenium integrifolium</i>	Wild Quinine	gal.	Cont.	18"
75	PENDHR	<i>Penstemon digitalis</i> "Husker Red"	Foxglove Beard Tongue	gal.	Cont.	18"
25	PEIPUR	<i>Petalostemum purpureum</i>	Purple Prairie Clover	gal.	Cont.	18"
30	PHYVIR	<i>Physostegia virginiana</i>	Obedient Plant	gal.	Cont.	18"
35	RATPIN	<i>Ratibida pinnata</i>	Yellow Coneflower	gal.	Cont.	18"
50	RUDFGL	<i>Rudbeckia fulgida</i> "Goldsturm"	Goldsturm Black-eyed Susan	gal.	Cont.	18"
50	SCHSCO	<i>Schizachyrium scoparium</i>	Little Bluestem	gal.	Cont.	18"
70	SEJHER	<i>Sedum</i> "Herbstfreude"	Autumn Joy Sedum	gal.	Cont.	18"
80	SPOHET	<i>Sporobolus heterolepis</i>	Prairie Dropseed	gal.	Cont.	18"

B PLANT SCHEDULE

LANDSCAPE WORKSHEET
Parking Lots, Storage Areas and Loading Areas
(Section 28.04 Madison General Ordinance)

Project Location/Address: 2501 EAST SPRINGS DRIVE
 Name of Project: GOBLEN CARS
 Owner/Contact: ARLAN KAY, AIA; ARCHITECTURE NETWORK, INC
 Address: 116 E DAYTON ST, MADISON, WI 53703

FOR PARKING LOTS WITH GREATER THAN 20 STALLS, LANDSCAPE PLANS MUST BE STAMPED BY A REGISTERED LANDSCAPE ARCHITECT

I. Number of Trees Required
 The number of trees required for a parking lot is based on the number of parking stalls. Using the Schedule for Required Trees on the reverse side of this worksheet, determine the number of trees required. (Example: One tree is required for 10 parking stalls.)

Number of Parking Stalls:

Total Square Footage of the Storage Area
 Divided by Three Hundred (300) Square Feet:

Number of Canopy Shade Trees Required (2" - 2 1/2" Caliper)
 (See Schedule on reverse side):

TOTAL:

II. Number of Landscape Points Required
 The number of points required is also based on the number of parking stalls. Using the Point Schedule for Landscape Elements on the reverse side of this worksheet, determine the number of points required. (Example: 49.5 points are required for 10 stalls.) A point fraction of (.5) or less may be disregarded, while a fraction in excess of (.5) must be counted as one point. Thus, 49.5 points would be rounded down to 49 points required.

The number of points required for loading areas is (75) points for each loading berth.
 (See Schedule on reverse side):

Number of Points Required (See Schedule on reverse side):

TOTAL:

Tabulation of Points and Credits
 Indicate below the quantity and points for all pertinent landscape elements. Also, credit information for boundary screening and any existing elements to be retained.

ELEMENT	POINT VALUE	QUANTITY	POINTS ACHIEVED	
			QUANTITY	POINTS
Canopy Tree: 2" - 2 1/2"	35	30	1050	
Deciduous Shrub	2	296	592	
Evergreen Shrub	3	0		
Decorative Wall or Fence (per 10 L.F.)	5	0		
Earth Berm (per 10 L.F.)				
Avg. Height 30"	5	0		
Avg. Height 15"	2	0		
Evergreen Trees 3' height minimum	15	0		
Canopy Tree or Small Tree 1 1/2" - 2" Caliper (i.e., Crab, Hawthorn)	15	15	225	
Sub-Total:			1867	

TOTAL
1867
 Total No. of Points Provided (Equal to or greater than points required)

*Trees required in Part I above, are not to be included in the point count

Approved by: _____ Date: _____

C LANDSCAPE WORKSHEET

Living Habitats
 Landscape Architecture
 Ecological Services
 Environmental Planning
 Custom Artworks
 6457 North Sayre Avenue
 Chicago, Illinois 60631
 P 773-4671634
 www.livinghabitats.com



Goblen CARS
 East Springs Drive
 Madison, Wisconsin

REVISIONS:

NO.	DATE	DESCRIPTION
3	12 APRIL 2013	
2	27 MARCH 2013	
1	30 JANUARY 2013	

DATE: 12/19/2012
 SCALE: 1"=20'-00"
 PROJECT:
 DRAWN BY: AP / HN
 DRAWING NAME:

LANDSCAPE PLAN

DRAWING NUMBER:

L-1.0



DESIGN CRITERIA

THIS ENTIRE LOT QUALIFIES AS AN OUTDOOR MERCHANDISING AREA ACCORDING TO MADISON CITY ORDINANCE 10.085

*10.085(4)(d) FOR AN OUTDOOR MERCHANDISING AREA, THE MAXIMUM INITIAL ILLUMINATION LEVEL IN 75% OF THE LOT SHALL NOT EXCEED 20 FOOTCANDLES. A CONTIGUOUS AREA NOT TO EXCEED 25% OF THE LOT MAY BE ILLUMINATED TO A LEVEL WHICH SHALL NOT EXCEED 40 FOOTCANDLES.

ALL LIGHTING FIXTURES INSTALLED SHALL UTILIZE CLEAR FLAT LENSES WITH FULL CUT-OFF OR SHIELDED OUTPUT.

AT LEAST 50% OF THE LIGHTING FIXTURES SHALL BE EXTINGUISHED 1/2 HR PAST THE CLOSING OF THE FACILITY.

REVISIONS:
01/23/2013 REV

Goben Cars
East Springs Drive
Madison, WI

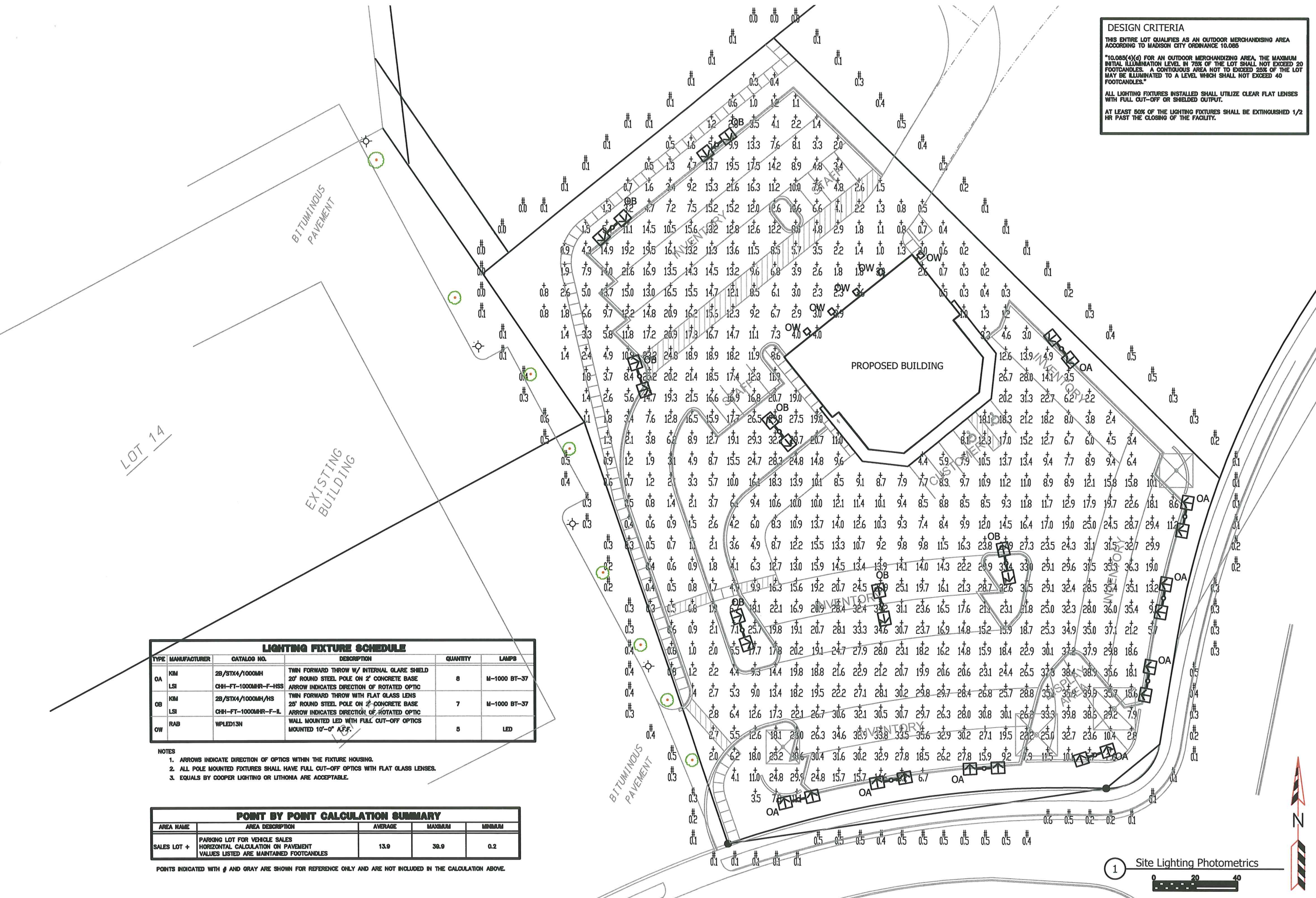
2861 Index Road
Madison WI 53715
608/271-2046
Fax 271-0180



Electric Construction
Electrical Design, Contracting & Consulting

JOB NUMBER:
DRAWN BY: RW
SCALE: 1" = 50'-0"
DATE: 1/18

SHEET C3.1

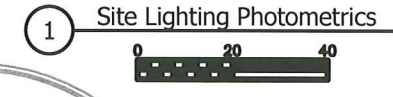


LIGHTING FIXTURE SCHEDULE					
TYPE	MANUFACTURER	CATALOG NO.	DESCRIPTION	QUANTITY	LAMPS
OA	KIM	2B/STK4/1000MH	TWIN FORWARD THROW W/ INTERNAL GLARE SHIELD 20' ROUND STEEL POLE ON 2' CONCRETE BASE	8	M-1000 BT-37
	LSI	CH81-FT-1000MHR-F-HSS	ARROW INDICATES DIRECTION OF ROTATED OPTIC		
OB	KIM	2B/STK4/1000MH/HS	TWIN FORWARD THROW WITH FLAT GLASS LENS 20' ROUND STEEL POLE ON 2' CONCRETE BASE	7	M-1000 BT-37
	LSI	CH81-FT-1000MHR-F-L	ARROW INDICATES DIRECTION OF ROTATED OPTIC		
OW	RAB	WPLED13N	WALL MOUNTED LED WITH FULL CUT-OFF OPTICS MOUNTED 10'-0" A.F.F.	5	LED

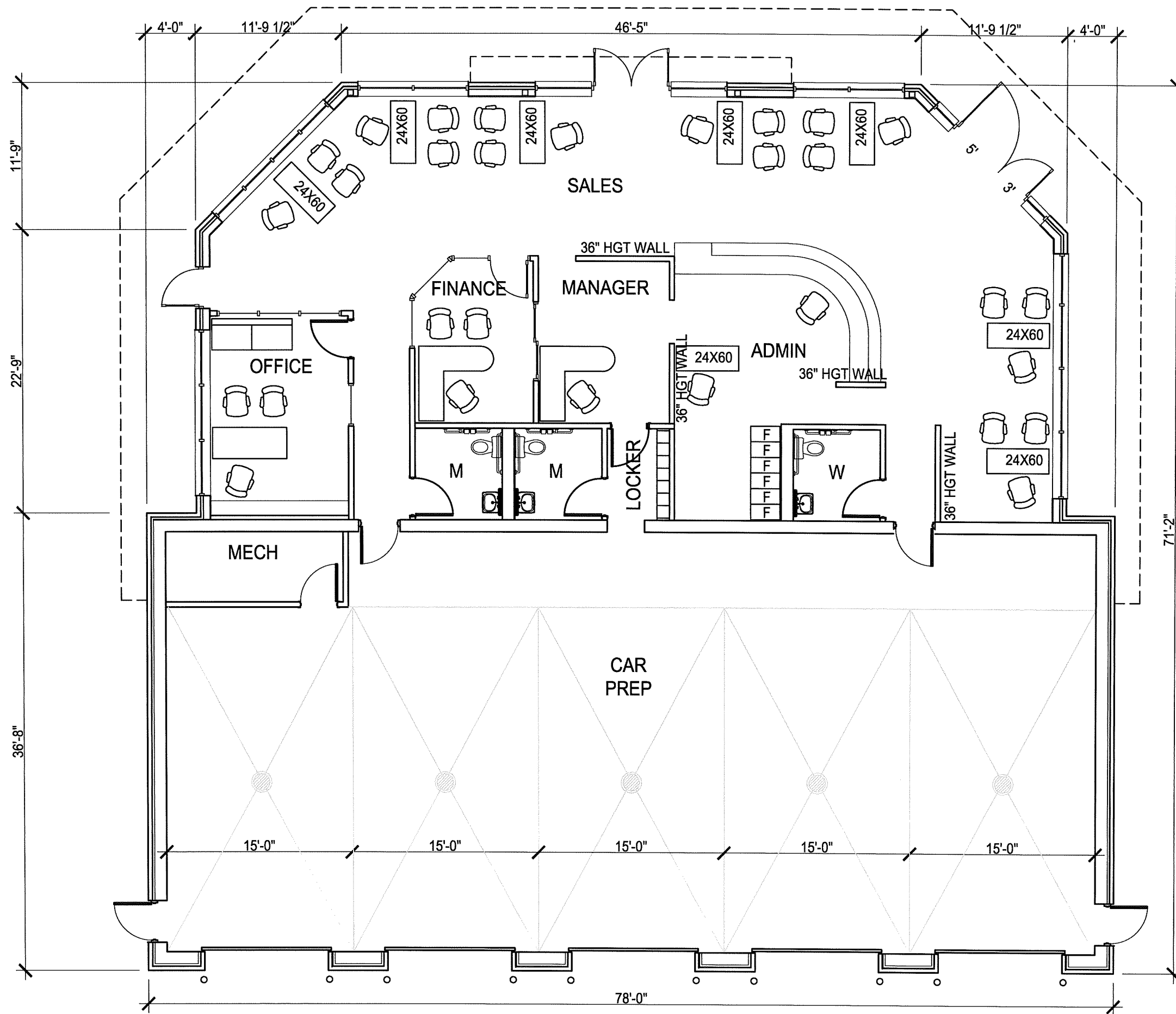
- NOTES**
- ARROWS INDICATE DIRECTION OF OPTICS WITHIN THE FIXTURE HOUSING.
 - ALL POLE MOUNTED FIXTURES SHALL HAVE FULL CUT-OFF OPTICS WITH FLAT GLASS LENSES.
 - EQUALS BY COOPER LIGHTING OR LITHONIA ARE ACCEPTABLE.

POINT BY POINT CALCULATION SUMMARY				
AREA NAME	AREA DESCRIPTION	AVERAGE	MAXIMUM	MINIMUM
SALES LOT +	PARKING LOT FOR VEHICLE SALES HORIZONTAL CALCULATION ON PAVEMENT VALUES LISTED ARE MAINTAINED FOOTCANDLES	13.9	38.9	0.2

POINTS INDICATED WITH # AND GRAY ARE SHOWN FOR REFERENCE ONLY AND ARE NOT INCLUDED IN THE CALCULATION ABOVE.



1 Site Lighting Photometrics



Goblen Cars

East Springs Drive
Madison, Wisconsin

REVISIONS:	
REV-1	01-30-2013
REV-2	03-27-2013

DATE: 12-19-2012

SCALE: 1/8"=1'-0"

PROJECT: K1214

DRAWN BY: KAC

DRAWING NAME:

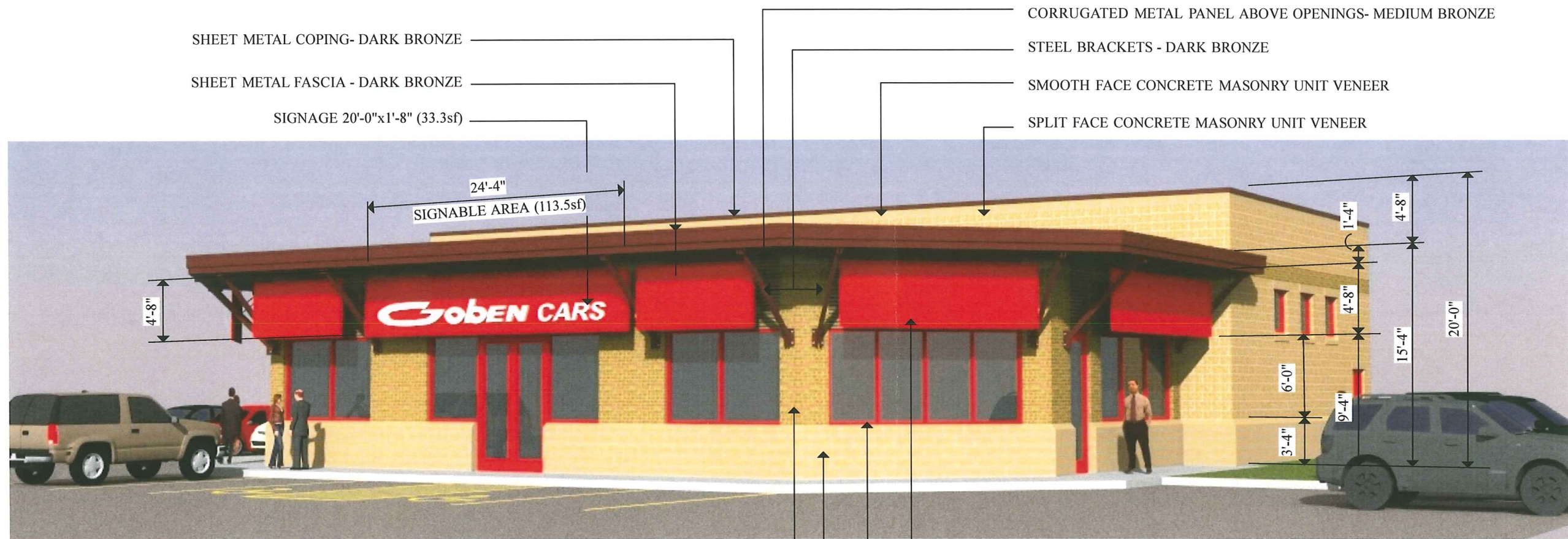
FLOOR PLAN

DRAWING NUMBER:

A1.1

GobEN CARS

East Springs Drive
Madison, Wisconsin



SHEET METAL COPING- DARK BRONZE

SHEET METAL FASCIA - DARK BRONZE

SIGNAGE 20'-0"x1'-8" (33.3sf)

CORRUGATED METAL PANEL ABOVE OPENINGS- MEDIUM BRONZE

STEEL BRACKETS - DARK BRONZE

SMOOTH FACE CONCRETE MASONRY UNIT VENEER

SPLIT FACE CONCRETE MASONRY UNIT VENEER

SOUTH ELEVATION

SMOOTH FACE CONCRETE MASONRY UNIT - HEADER AND SILL

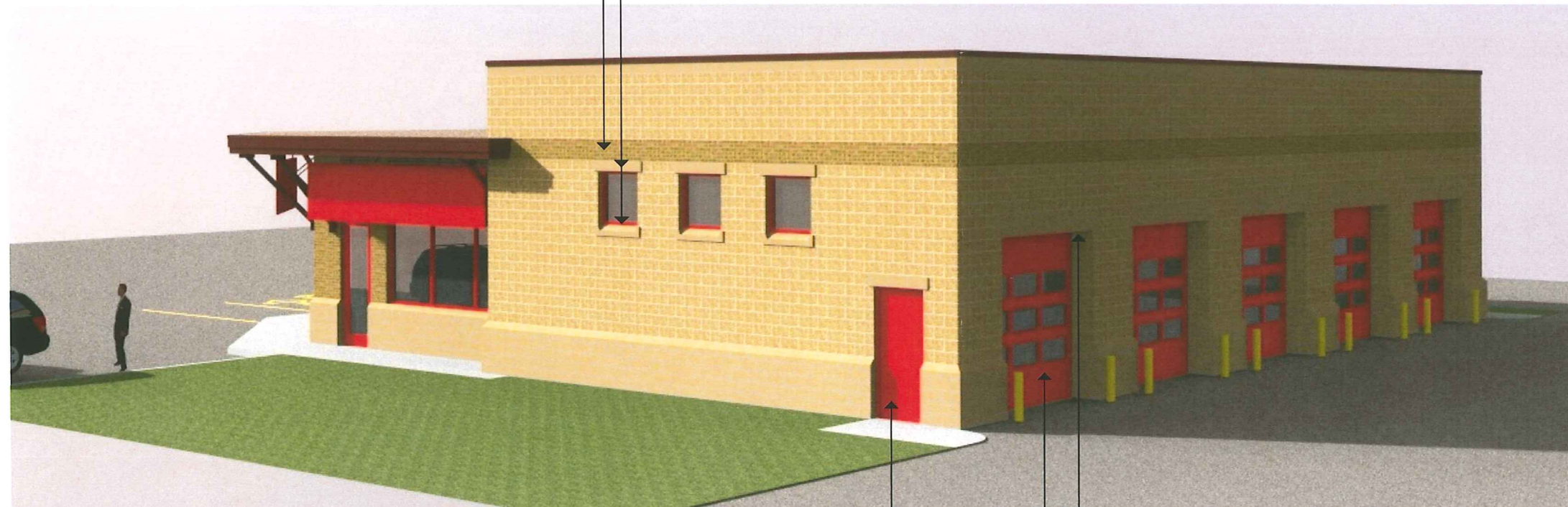
BRICK MASONRY VENEER BAND

FABRIC AWNING - CARDINAL RED

ALUMINUM STOREFRONT AND ENTRANCE SYSTEMS - CARDINAL RED w/ CLEAR GLASS

SMOOTH FACE CONCRETE MASONRY UNIT

BRICK VENEER MASONRY



EAST ELEVATION

SMOOTH FACE CONCRETE MASONRY UNIT HEADER

GLAZED ALUMINUM OVERHEAD DOOR

INSULATED HOLLOW METAL DOOR

REVISIONS:

DATE: 3/27/2013
SCALE: NONE
PROJECT: K1214
DRAWN BY: kta
DRAWING NAME:

ELEVATIONS

DRAWING NUMBER:

A2.0



WEST ELEVATION



NORTH ELEVATION

Gobben CARS

East Springs Drive
Madison, Wisconsin

REVISIONS:

DATE: 3/27/2013
SCALE: NONE
PROJECT: K1214
DRAWN BY: KTA
DRAWING NAME:

ELEVATIONS

DRAWING NUMBER:

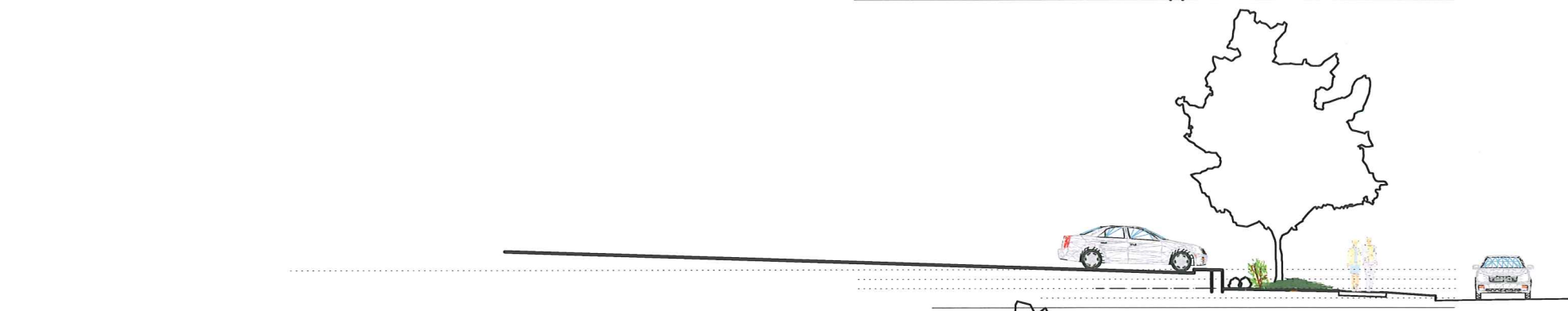
A2.1

Gobben Cars

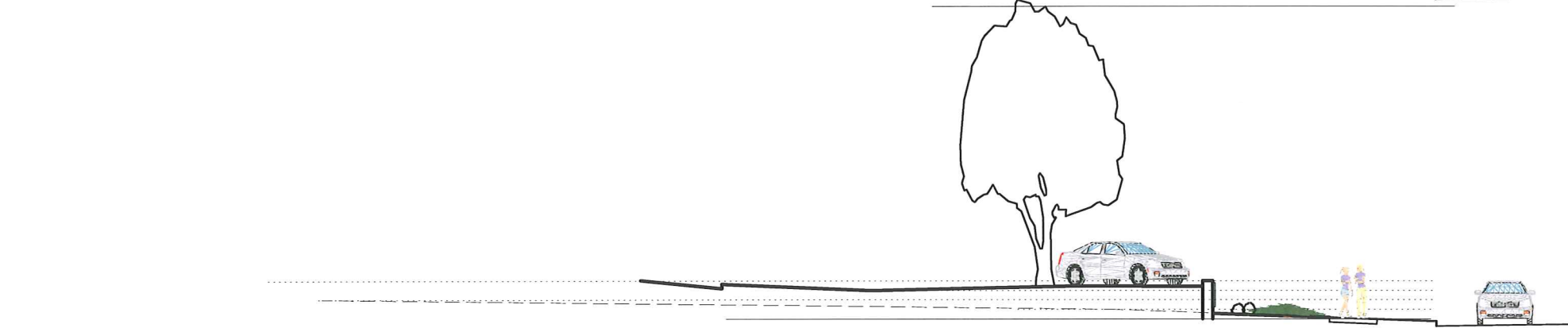
East Springs Drive
Madison, Wisconsin



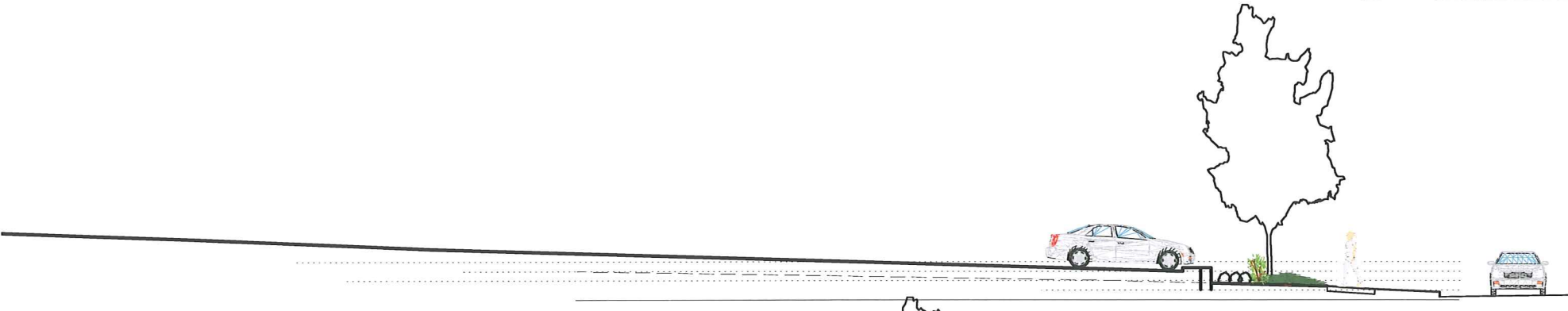
1 NE CORNER @ HIGH CROSSING
A3.0 Scale: 1/16" = 1'-0"



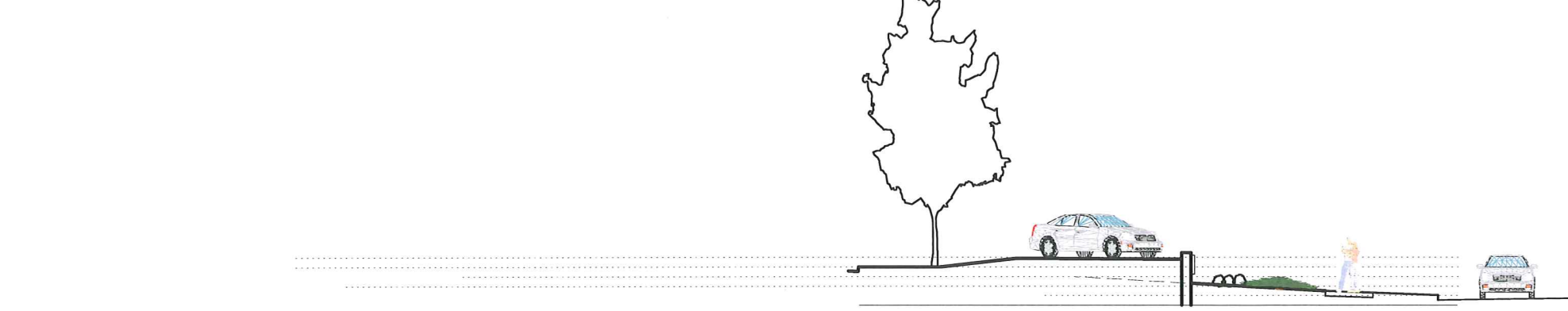
2 HIGH CROSSING @ MID LOT
A3.0 Scale: 1/16" = 1'-0"



3 CORNER @ EAST SPRINGS & HIGH CROSSING
A3.0 Scale: 1/16" = 1'-0"



4 EAST SPRINGS MID LOT
A3.0 Scale: 1/16" = 1'-0"



5 EAST SPRINGS @ ENTRY CORNER
A3.0 Scale: 1/16" = 1'-0"

REVISIONS:

#1	1/30/2013
#2	3/27/2013

DATE: 27 MARCH 2013
SCALE: NTS
PROJECT: K1214
DRAWN BY: ASH
DRAWING NAME:

SITE SECTIONS

DRAWING NUMBER:

A-3.0



Living Habitats

*Landscape Architecture
Ecological Services
Environmental Planning
Custom Artworks*

6457 North Sayre Avenue
Chicago, Illinois 60631
p. 773-4671634
www.livinghabitats.com



Goblen Cars

East Springs Drive
Madison, Wisconsin

REVISIONS:	
3	12 APRIL 2013
2	27 MARCH 2013
1	30 JANUARY 2013

DATE: 12/19/2012

SCALE: NTS

PROJECT:

DRAWN BY: CM/AP

DRAWING NAME:

SITE RENDERINGS

DRAWING NUMBER:

A-3.1

Living Habitats

Landscape Architecture
Ecological Services
Environmental Planning
Custom Artworks

6457 North Sayre Avenue
Chicago, Illinois 60631
p. 773-4671634
www.livinghabitats.com



GobEN CARS

East Springs Drive
Madison, Wisconsin



REVISIONS:

NO.	DATE
3	12 APRIL 2013
2	27 MARCH 2013
1	30 JANUARY 2013

DATE: 12/19/2012
SCALE: NTS
PROJECT:
DRAWN BY: CM/AP
DRAWING NAME:

SITE RENDERINGS

DRAWING NUMBER:

A-3.2