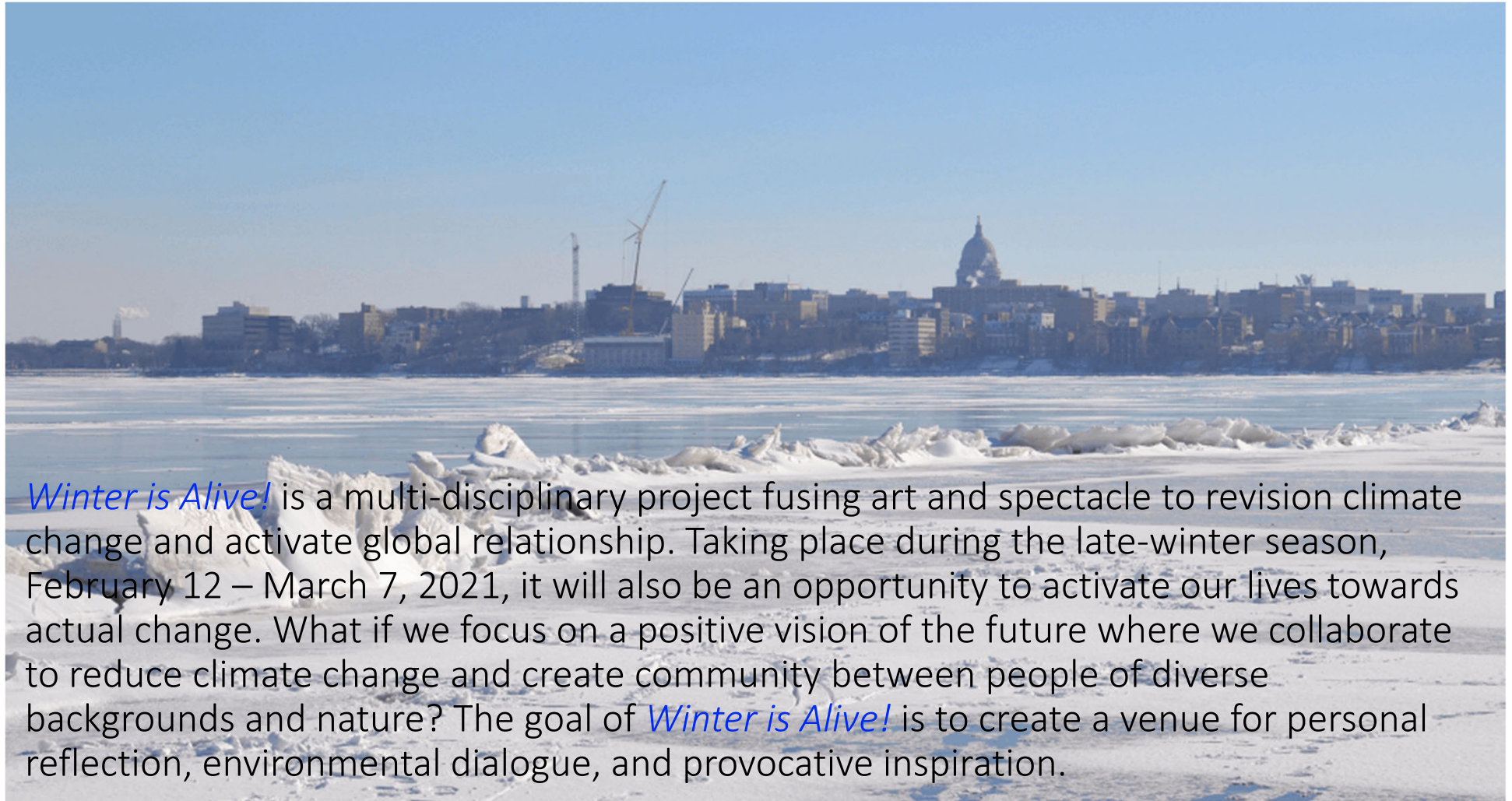


WINTER IS ALIVE!

A COOLER WORLD CARNIVAL

FEBRUARY 12 – MARCH 7, 2021 📍 MADISON, WISCONSIN



Winter is Alive! is a multi-disciplinary project fusing art and spectacle to revision climate change and activate global relationship. Taking place during the late-winter season, February 12 – March 7, 2021, it will also be an opportunity to activate our lives towards actual change. What if we focus on a positive vision of the future where we collaborate to reduce climate change and create community between people of diverse backgrounds and nature? The goal of *Winter is Alive!* is to create a venue for personal reflection, environmental dialogue, and provocative inspiration.



Winter is Alive! would feature temporary outdoor sculptural installations and livestreamed performative and narrative events (performance art/ theater/ music/ story-telling/ live poetry) and informational events (lectures/ talks/ image shows). The focus of all of the programming would be art as a catalyst for positive environmental change. Themes relevant to seasonal festivals, rituals and activities will be reconsidered as transformative platforms for increased awareness and creative solutions to global warming and human reconciliation.

Rock Lake Icehenge - Drew McHenry, Kevin Lehner, Quinn Williams, Alec Niedringhaus, and Patrick Shields



Public Art Our lives are public art, we are interactive forms in space, engaging with audience, environment, culture and time. Our world is the site - surrounded by infinite space, ever-changing, forming and un-forming, extending before and beyond our lives. Our inspiration is now - our cultural context, our immediate physical and political experience and our environmental and human community. Our ability to reform and recreate our world is infinite – at this point in time, we must redirect our focus towards a compassionate collaboration with the earth and one another.

Ice Furniture - Hongtao Zhou

MADISON LAKES ICE SUMMARY

Wisconsin State Climatology Office

Disclaimer: Freezing date is the first date that the majority of the lake surface is estimated to be frozen. No reliable information on ice thickness is available. See [How ice-in, ice-out dates are determined for Madison Lakes.](#)

	MENDOTA	MONONA	WINGRA
THIS YEAR 2019-20			
Date lake froze	12 Jan	16 Dec, 12 Jan	12 Nov, 11 Dec
Date lake opened	22 Mar	30 Dec, 20 Mar	27 Nov, 12 Mar
Duration, days	70	82	107
LAST YEAR 2018-19			
Date lake froze	15 Dec, 10 Jan	11 Dec, 10 Jan	7 Dec
Date lake opened	21 Dec, 31 Mar	28 Dec, 31 Mar	28 Mar
Duration, days	86	97	111
MEDIAN DATES AND DURATION OF ICE COVER			
Median Freeze Date	29 Dec	15 Dec	29 Nov
Median Opening Date	4 Apr	30 Mar	25 Mar
Median Duration, days	104	104	114

Global Warming We are all aware of global warming. The changes in our climate are undeniable and accelerating. We can see the changes globally in extreme weather events, catastrophic forest fires and droughts, sea level change and the diminution of the polar regions - and we can see the changes locally, in rising temperatures, higher lake levels and shorter ice duration on Madison's lakes. There is much we can all do - and stop doing. *The time for awareness and change is now!*

Art Installation Projects

installation/ exhibition/ projection venues (in-person/ outdoor)

Potential Jurors

Tom Jones - Associate Professor - Photography, UW-Madison Art Department

Gail Simpson - Professor - Foundations, UW-Madison Art Department

Glenn Williams - Associate Professor - Sculpture, UW-Milwaukee - Peck School of Arts

Narrative and Performance Projects

narrative: images/ video/ interactive events/ informational talks/ dialogue

performance: theater/ music/ performance art/ story-telling/ poetry

(virtual livestreamed, archive exhibited via outdoor projection venues)

Potential Jurors

John Hitchcock - Associate Dean for the Arts - School of Education

Professor - Relief & Serigraphy, UW-Madison Art Department

Chris Walker - Associate Professor - Dance, UW-Madison Dance Department

Sofia Snow – Director, Office of Multicultural Arts Initiatives and First Wave Scholarship Program, UW-Madison

Installation Project

North Pole Project will focus on art as a catalyst for environmental change through the recreation of a deep-sea Arctic oil platform as a holiday light display. (sketch)



Exhibition Project

Drawing Hope

drawings solicited from K-5 students about what they hope for the future of earth and exhibited on store front windows and online – or?

There is always hope –
Banksy (work example)



*Narrative/
Installation*

Warming House
will be a
translucent space
for projection of
current global
warming
phenomenon or
internationally
solicited images/
videos of special
places on earth.
(sketch)





Narrative Project

Winter Projections Projection of virtual events including interactive dialogues, brief informational and inspirational narratives, Greta Thunberg? High school students? Local educators? Music and poetry, Pitbull/ Billie Eilish? Virtual open mike? (work example) *one beat one tree* - naziha mestaoui

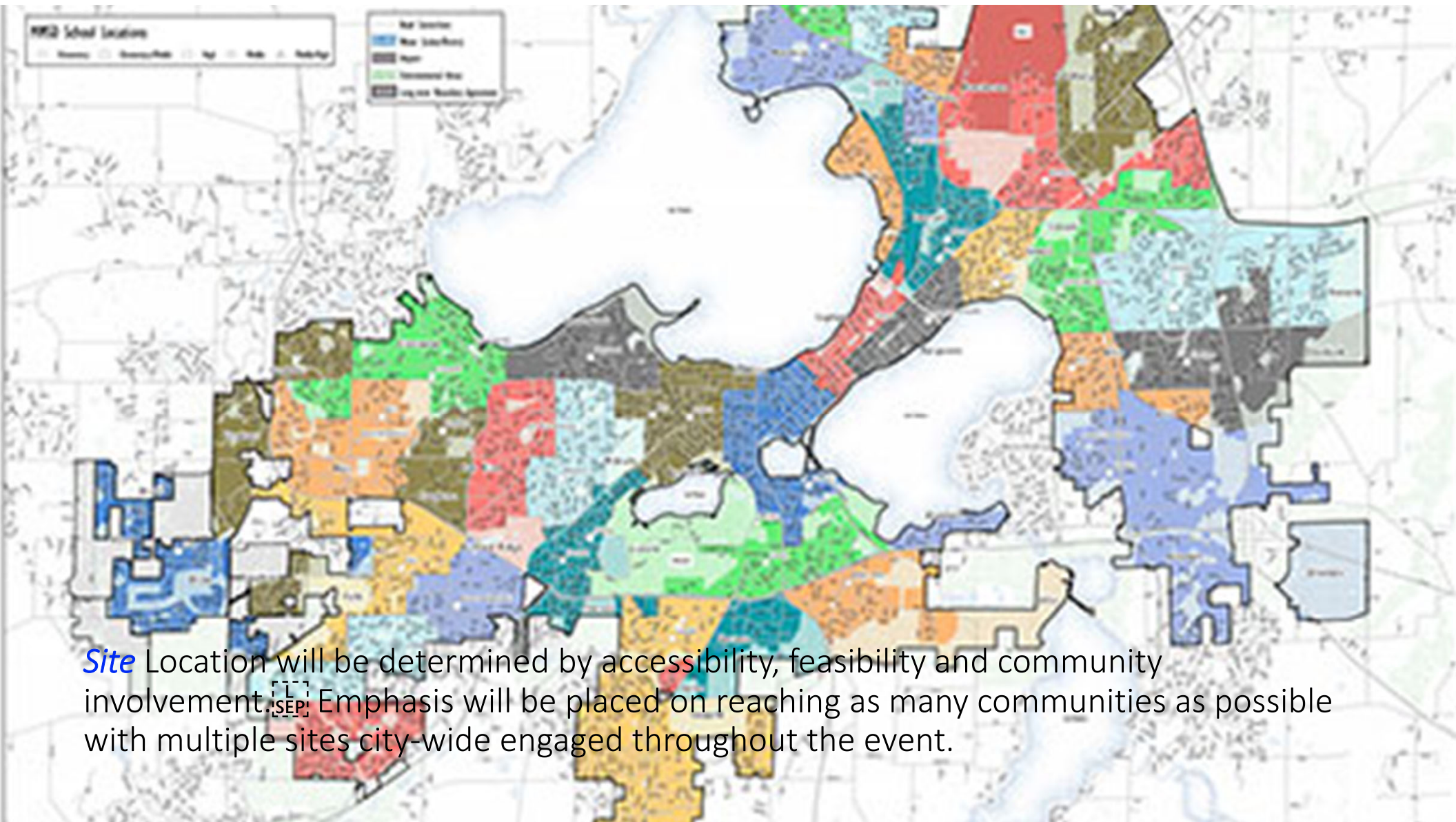


Interactive Project


'Polar' aluminum pour. A limited number of open-face molds will be available to members of the community to carve snowflakes to be cast in aluminum and sold to benefit environmental groups. Additionally castings of the Madison lakes will be poured directly on one of the lakes using the ice as a mold.



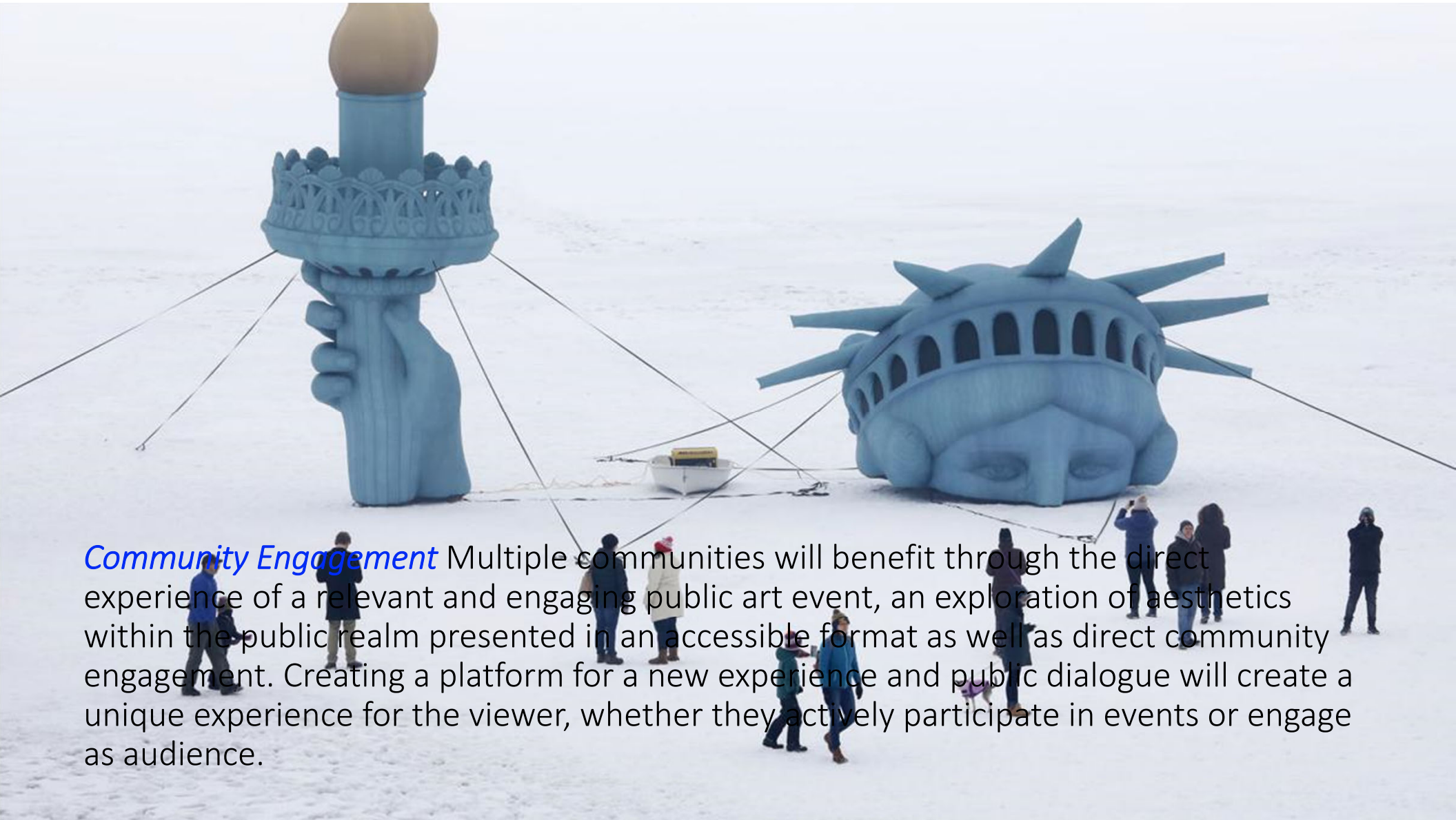
Proposals Proposals to participate in Winter is Alive! will be sought from artists and creatives with an emphasis on the possibility for collaboration and cross-disciplinary creative research. Outdoor art installations and exhibitions will be considered based on site-specificity and theme-relevance as well as diverse representation. Virtual participation will include projection opportunities for artwork, video, live performances, educational dialogue and inspirational narratives. The goal of Winter is Alive! is to create a visually provocative, hope-inducing and awe-inspiring interactive event as a platform for personal reflection and environmental dialogue and as a catalyst to engage and inspire towards positive change.



Site Location will be determined by accessibility, feasibility and community involvement. ^[SEP] Emphasis will be placed on reaching as many communities as possible with multiple sites city-wide engaged throughout the event.

A wide, flat, icy landscape under a pale sky, possibly a frozen body of water or a large field of ice. The foreground is covered in a layer of snow and ice, with some darker patches visible. The middle ground shows a vast, flat expanse of ice extending to the horizon. The sky is a uniform, light greyish-blue color. In the distance, a faint line of trees or land is visible on the left side.

Funding Funding would support the creation of a multi-platform, collaborative experience contributing to the cultural and political dialogue for all involved. Support received would fund creative organization and production of a ten-day artistic event including all material and production costs, artist fees, promotional materials and site costs, as well as stipends and materials for additional participating artists/ projects. Sponsors, partners, and in-kind donations will be sought.



Community Engagement Multiple communities will benefit through the direct experience of a relevant and engaging public art event, an exploration of aesthetics within the public realm presented in an accessible format as well as direct community engagement. Creating a platform for a new experience and public dialogue will create a unique experience for the viewer, whether they actively participate in events or engage as audience.

Collaborators (in discussion)

City of Madison Arts Commission

- Program Administrator - Karin Wolf

Sustain Dane

- Executive Director - Claire Oleksiak

Madison Metropolitan School District

- East High School Art Department - April Sopkin

- Arts Education Coordinator - Peter Kuzma

University of Wisconsin-Madison Sculpture Program

- Professor Aris Georgiades

- Professor Gail Simpson

- Professor Sarah FitzSimons

FeLion Studios

- Director - Alisa Toninato

UW Arboretum

- Director - Karen Oberhauser

Collaborators (possible)

Olbrich Gardens

Garver Feed Mill

Environmental Groups

Local/ Regional Foundations, Businesses, Organizations

Artistic director

Tamsie Ringler - tamsie.com ☐ ringler@tamsie.com ☐ 651-387-9992

Artistic and curatorial assistant

Marc La Pointe - marclapointe.com ☐ marclapointeart@gmail.com ☐ 208-301-8721

Technical coordinator (on-site) - TBD

Technical coordinator (online) - TBD

Program Coordinators: art/ narrative/ performance - TBD

Thank you!