

APPLICATION FOR
URBAN DESIGN COMMISSION
REVIEW AND APPROVAL

AGENDA ITEM # _____
Project # _____
Legistar # 24053

DATE SUBMITTED: 9.28.11

Action Requested

Informational Presentation

Initial Approval and/or Recommendation

UDC MEETING DATE: OCT. -19-2011

Final Approval and/or Recommendation

PLEASE PRINT!

PROJECT ADDRESS: 5739 TOKAY BLVD.

ALDERMANIC DISTRICT: 19

OWNER/DEVELOPER (Partners and/or Principals) ARCHITECT/DESIGNER/OR AGENT:
DON MILLER / JOHN McKEGNEY JIM TRIATIK / KF SULLIVAN

5802 ODANA ROAD

1314 EMIL ST.

MADISON WI 53719

MADISON WI 53713

CONTACT PERSON: JIM TRIATIK

Address: 1314 EMIL ST.

MADISON WI 53713

Phone: 608.257.2289

Fax: 608.257.2906

E-mail address: JIM@KFSULLIVAN.COM

PLEASE PRINT!

TYPE OF PROJECT:

(See Section A for:)

Planned Unit Development (PUD)

General Development Plan (GDP)

Specific Implementation Plan (SIP)

Planned Community Development (PCD)

General Development Plan (GDP)

Specific Implementation Plan (SIP)

Planned Residential Development (PRD)

New Construction or Exterior Remodeling in an Urban Design District * (A public hearing is required as well as a fee)

School, Public Building or Space (Fee may be required)

New Construction or Addition to or Remodeling of a Retail, Hotel or Motel Building Exceeding 40,000 Sq. Ft.

Planned Commercial Site

(See Section B for:)

New Construction or Exterior Remodeling in C4 District (Fee required)

(See Section C for:)

R.P.S.M. Parking Variance (Fee required)

(See Section D for:)

Comprehensive Design Review* (Fee required)

Street Graphics Variance* (Fee required)

Other _____

*Public Hearing Required (Submission Deadline 3 Weeks in Advance of Meeting Date)

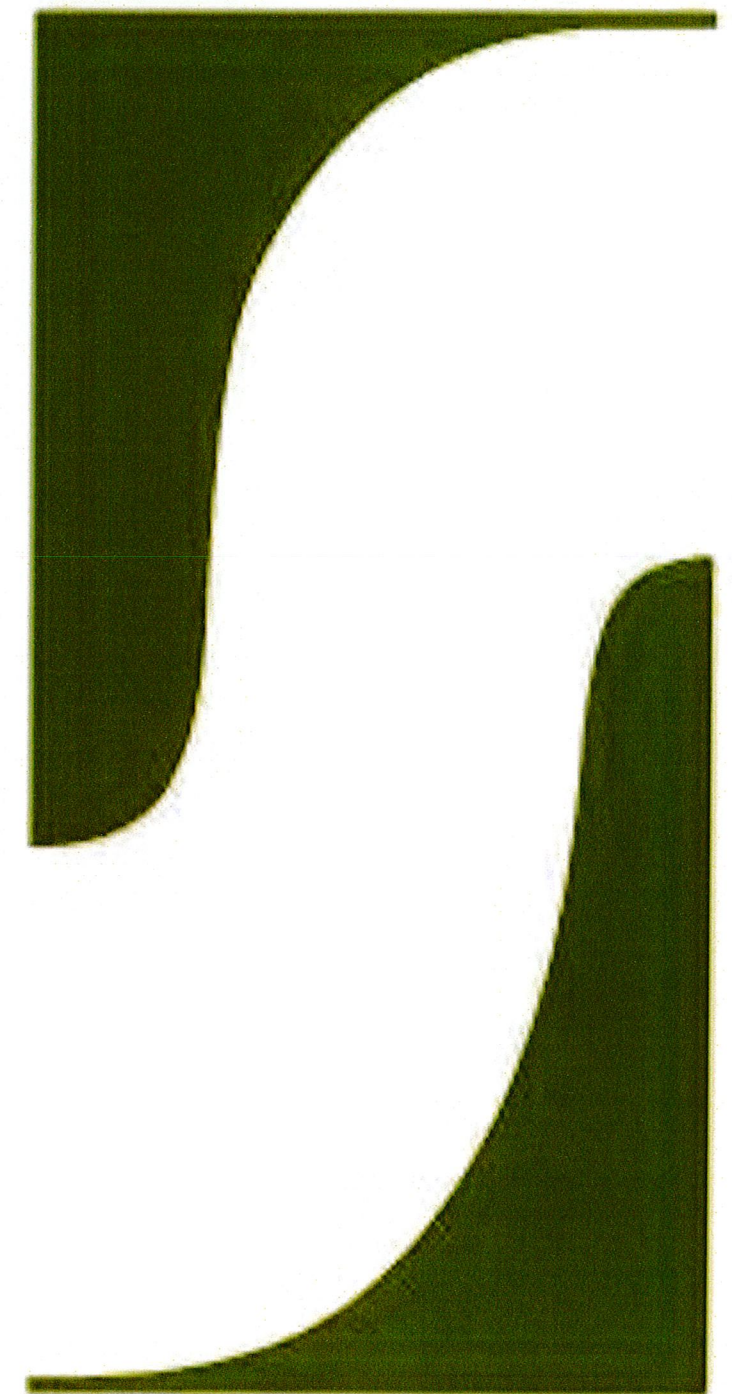
Where fees are required (as noted above) they apply with the first submittal for either initial or final approval of a project.



October 12, 2011
Urban Design Review Resubmittal



5739 Tokay Blvd.
Madison, WI 53719



SINCE 1937

SULLIVAN
COMPANY



2nd SUBMITTAL

Revisions from October 5th meeting:

- 1) added more red ACM panels at west entry**
- 2) added an aluminum sun shade above the overhead doors on the west elevation**

October 12, 2011

**Letter of Intent for a new Don Miller Body Shop
5739 Tokay Blvd.**

Dear Urban Design Commission Members,

The Don Miller automotive group is proposing to construct a 14,900 square foot body shop on their lot on Tokay Boulevard. This vacant lot is across the street from their existing Odana Road facilities, which comprises of three separate buildings for Subaru, Mazda, and Chrysler. The lot is zoned C3L, abutting other C3L lots. It is in Urban Design District 03.

Our Project team includes:

- Architect: Tom Knoop / Jim Triatik of Sullivan Design Build
- General Contractor: Sullivan Design Build
- Landscape Architect: Glacier Landscape, Inc.
- Storm Water Management: Quam Engineering, L.L.C.
- Site Lighting: Rob Rudolf of Electric Construction, Inc.

The timeline for the entire project will be approximately one year, with construction to start late fall of this year.

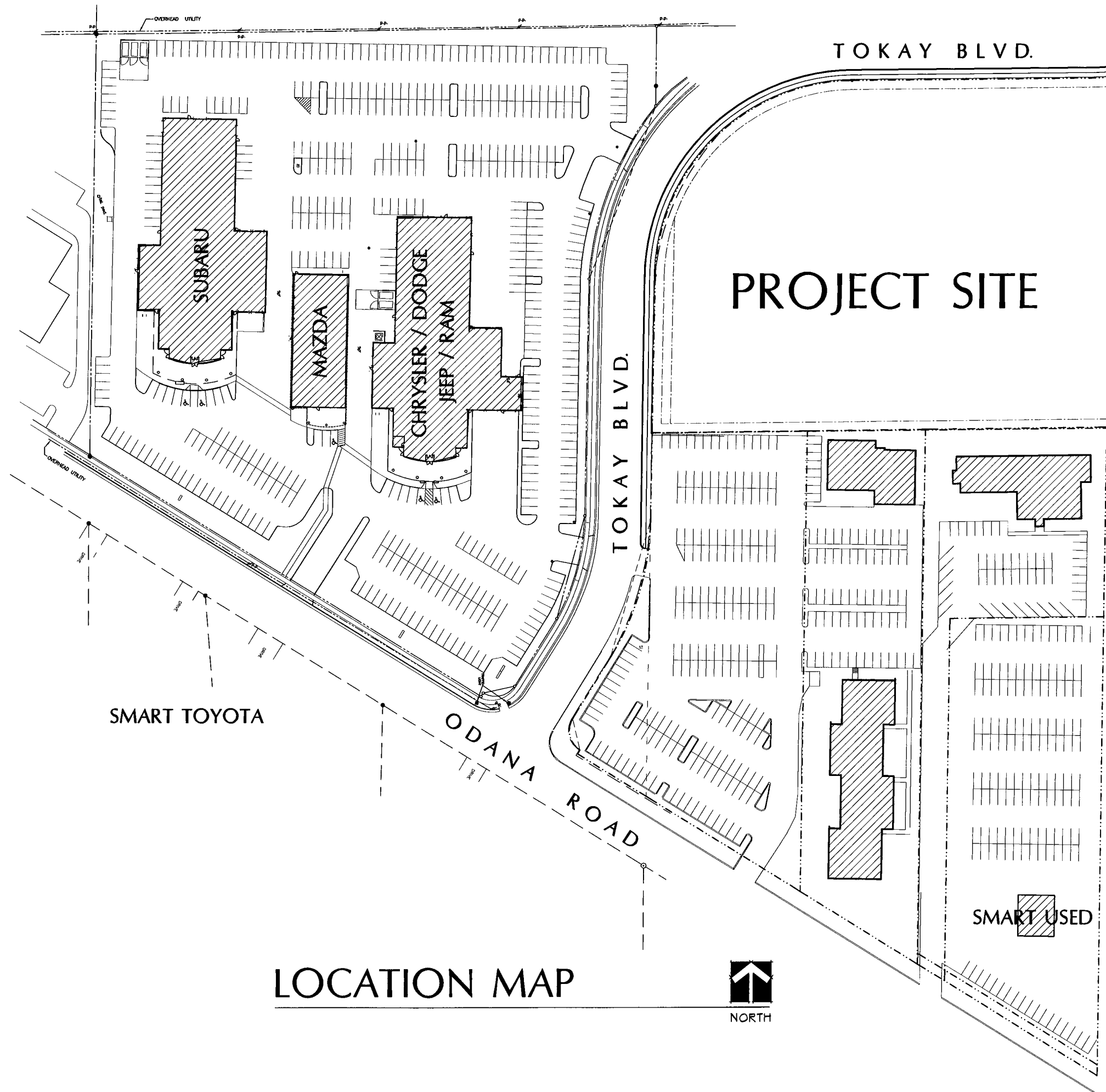
If you should require additional information, please contact me at 257-2289.

Sincerely,

K. F. SULLIVAN CONSTRUCTION

A handwritten signature in blue ink that reads 'JIM TRIATIK'.

James M. Triatik, A.I.A.
Vice President / Project Architect



LOCATION MAP



CURVE DATA

CURVE NO.	RADIUS (FEET)	CHORD (FEET)	ARC (FEET)	CHORD BEARING	CENTRAL ANGLE
1-2	217	303	335.41	S09°38'20"W	19°50'00"

PARKING LOT PLAN SITE INFORMATION BLOCK

Site Address 5739 TOKAY BOULEVARD
 Site acreage (total) 2.88 ACRES

Number of building stories (above grade) ONE
 Building height 19 FEET
 DILHR type of construction (new structures or additions) ?
 Total square footage of building 28,338

Use of property ?
 Gross square feet of office ?
 Gross square feet of retail area ?
 Number of employees in warehouse N/A
 Number of employees in production ?
 Capacity of restaurant/office of assembly N/A

Number of bicycle stalls shown 4

Number of Parking stalls:

	SHOWN
Inventory	96
Customer/employee	12
Accessible	2
Total	110

Number of trees shown (See Landscape Plan)

PAVING LEGEND

- 3" ASPHALT PAVEMENT OVER 8" AGGREGATE BASE COURSE
- 4" ASPHALT PAVEMENT OVER 10" AGGREGATE BASE COURSE (IN FIRE ACCESS AISLE)

THE FIRE LANE AND ACCESS AISLE SHALL BE CONSTRUCTED TO SUPPORT A MINIMUM LOAD OF 85,000 POUNDS AND CERTIFIED IN THE FIELD BY AN APPROVED SOILS ANALYST.



SIGN BOTTOM 48" ABOVE SIDEWALK

HANDICAP ACCESSIBLE SIGN DETAIL

CONCRETE APRON & SIDEWALK (PER CITY STANDARDS)
SAWCUT CURB HEAD FOR ENTRANCE (PER CITY STANDARDS)

TOKAY BOULEVARD

TOKAY BOULEVARD

5739 TOKAY BLVD - CITY OF MADISON

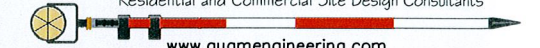
SITE PLAN

PAGE: 2 OF 5

DATED: SEPTEMBER 22, 2011

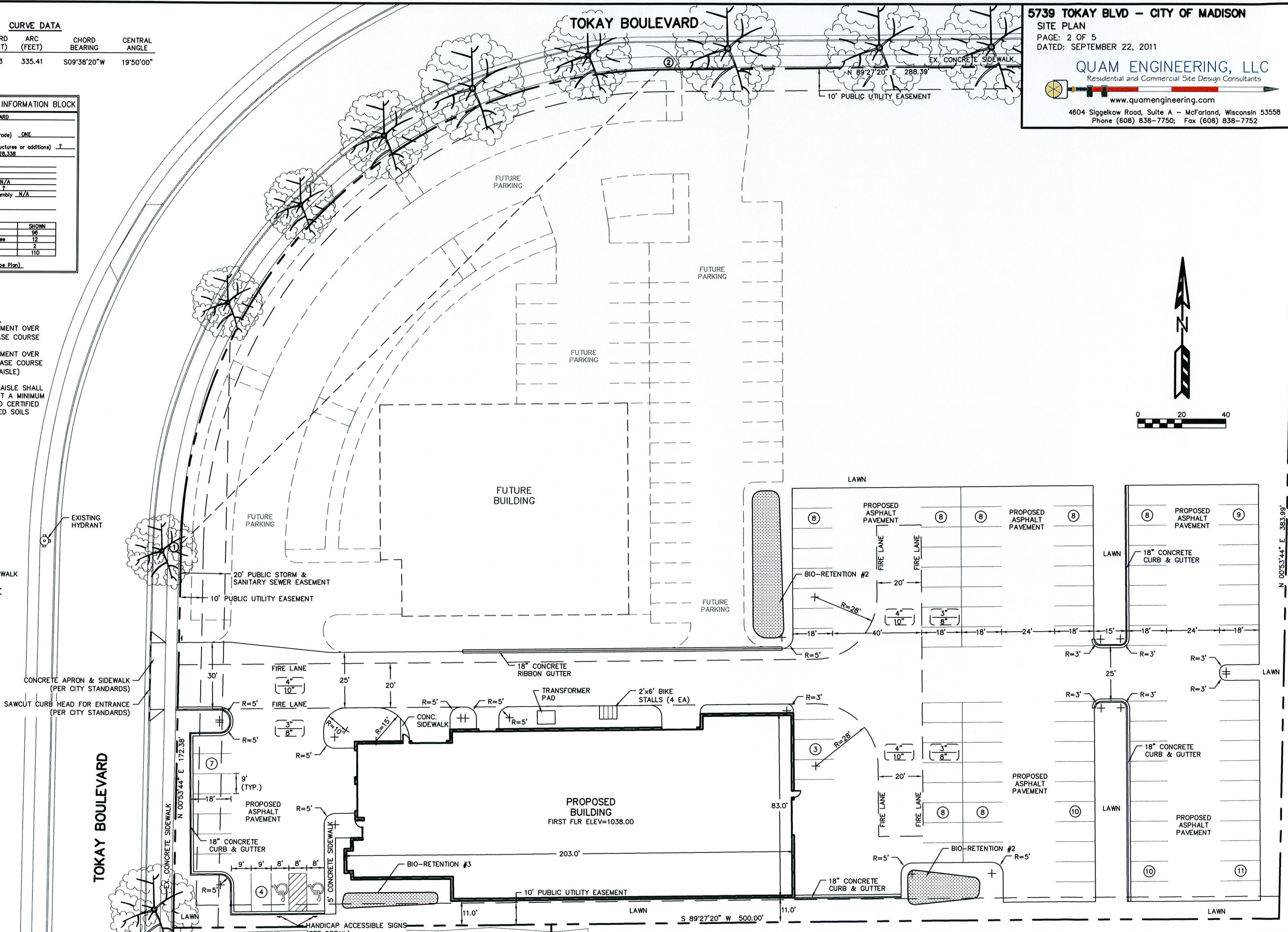
QUAM ENGINEERING, LLC

Residential and Commercial Site Design Consultants



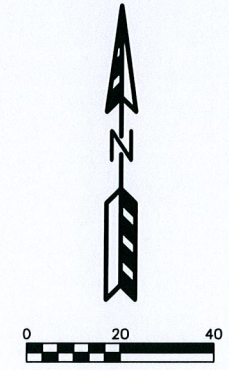
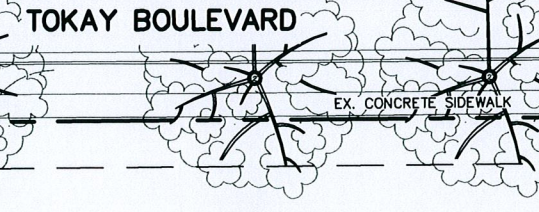
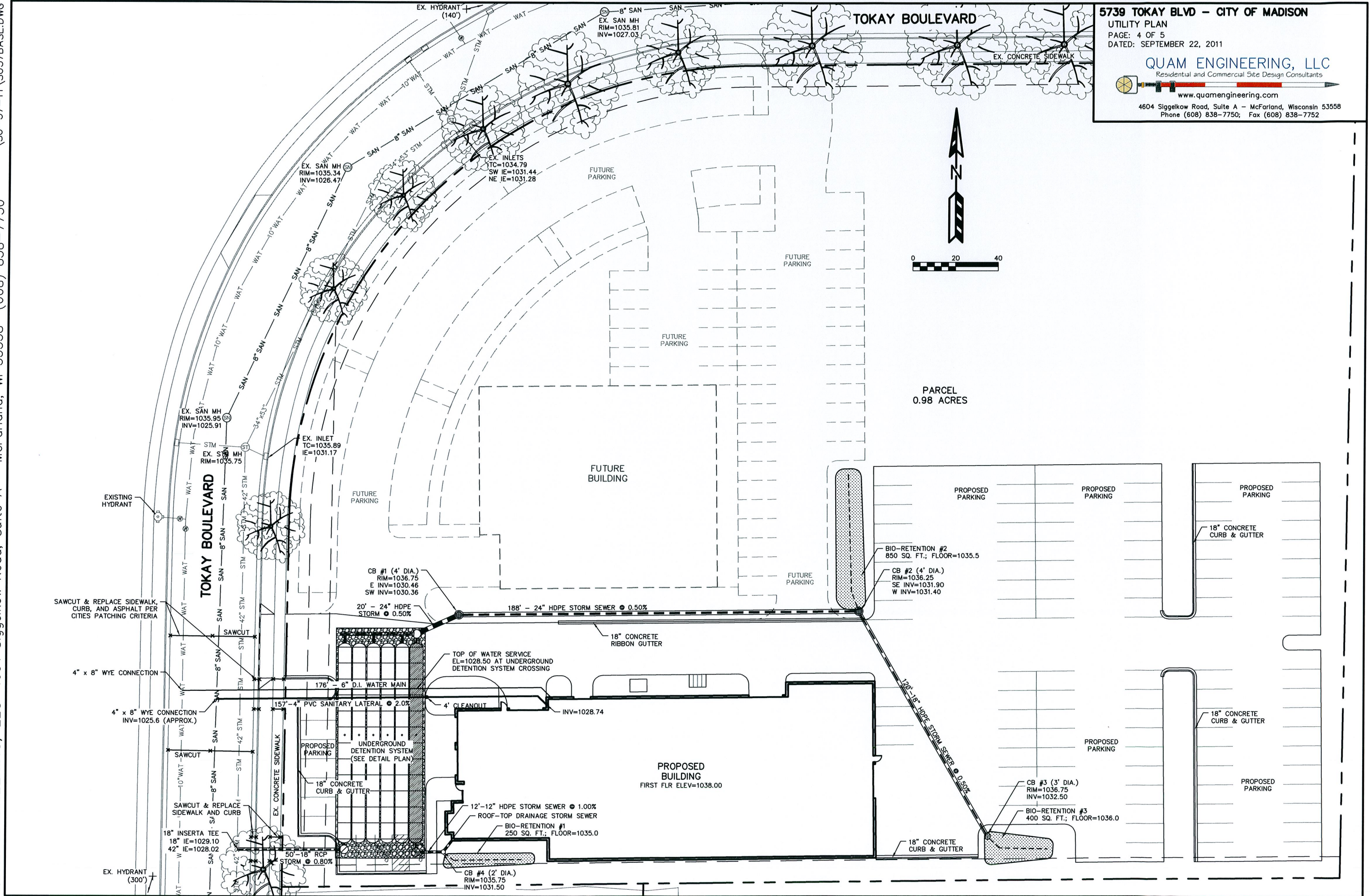
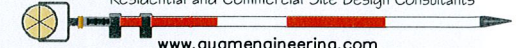
www.quamengineering.com

4604 Siggelkow Road, Suite A - McFarland, Wisconsin 53558
Phone (608) 838-7750; Fax (608) 838-7752



N 00°53'44" E 383.99'

S 89°27'20" W 500.00'



PARCEL
0.98 ACRES

CB #1 (4' DIA.)
RIM=1036.75
E INV=1030.46
SW INV=1030.36

BIO-RETENTION #2
850 SQ. FT.; FLOOR=1035.5

CB #2 (4' DIA.)
RIM=1036.25
SE INV=1031.90
W INV=1031.40

CB #3 (3' DIA.)
RIM=1036.75
INV=1032.50

BIO-RETENTION #3
400 SQ. FT.; FLOOR=1036.0

CB #4 (2' DIA.)
RIM=1035.75
INV=1031.50

PROPOSED BUILDING
FIRST FLR ELEV=1038.00

UNDERGROUND
DETENTION SYSTEM
(SEE DETAIL PLAN)

TOP OF WATER SERVICE
EL=1028.50 AT UNDERGROUND
DETENTION SYSTEM CROSSING

176' - 6" D.I. WATER MAIN

157' - 4" PVC SANITARY LATERAL @ 2.0%

4' CLEANOUT

INV=1028.74

12'-12" HDPE STORM SEWER @ 1.00%

ROOF-TOP DRAINAGE STORM SEWER

BIO-RETENTION #1
250 SQ. FT.; FLOOR=1035.0

50' - 18" RCP
STORM @ 0.80%

188' - 24" HDPE STORM SEWER @ 0.50%

18" CONCRETE
RIBBON GUTTER

120' - 18" HDPE STORM SEWER @ 0.50%

18" CONCRETE
CURB & GUTTER

18" CONCRETE
CURB & GUTTER

18" CONCRETE
CURB & GUTTER

EXISTING
HYDRANT

4" x 8" WYE CONNECTION

4" x 8" WYE CONNECTION
INV=1025.6 (APPROX.)

18" INSERTA TEE
18" IE=1029.10
42" IE=1028.02

EX. HYDRANT
(300')

SAWCUT & REPLACE SIDEWALK,
CURB, AND ASPHALT PER
CITIES PATCHING CRITERIA

SAWCUT

SAWCUT & REPLACE
SIDEWALK AND CURB

SAWCUT

SAWCUT

SAWCUT

SAWCUT

SAWCUT

SAWCUT

SAWCUT

SAWCUT

SAWCUT

SAWCUT

SAWCUT

SAWCUT

SAWCUT

SAWCUT

SAWCUT

SAWCUT

SAWCUT

SAWCUT

SAWCUT

SAWCUT

SAWCUT

SAWCUT

SAWCUT

SAWCUT

SAWCUT

SAWCUT

TOKAY BOULEVARD

TOKAY BOULEVARD

EX. CONCRETE SIDEWALK

EX. SAN MH
RIM=1035.34
INV=1026.47

EX. SAN MH
RIM=1035.81
INV=1027.03

EX. SAN MH
RIM=1035.95
INV=1025.91

EX. SAN MH
RIM=1035.75

EX. INLET
TC=1035.89
IE=1031.17

EX. INLETS
TC=1034.79
SW IE=1031.44
NE IE=1031.28

FUTURE BUILDING

FUTURE BUILDING

FUTURE BUILDING

FUTURE BUILDING

FUTURE BUILDING

FUTURE BUILDING

FUTURE BUILDING

FUTURE BUILDING

FUTURE BUILDING

FUTURE PARKING

FUTURE PARKING

FUTURE PARKING

FUTURE PARKING

FUTURE PARKING

FUTURE PARKING

FUTURE PARKING

FUTURE PARKING

FUTURE PARKING

FUTURE PARKING

FUTURE PARKING

FUTURE PARKING

FUTURE PARKING

PROPOSED PARKING

PROPOSED PARKING

PROPOSED PARKING

PROPOSED PARKING

PROPOSED PARKING

PROPOSED PARKING

PROPOSED PARKING

PROPOSED PARKING

PROPOSED PARKING

PROPOSED PARKING

PROPOSED PARKING

PROPOSED PARKING

PROPOSED PARKING

PROPOSED PARKING

PROPOSED PARKING

PROPOSED PARKING

PROPOSED PARKING

PROPOSED PARKING

PROPOSED PARKING

PROPOSED PARKING

PROPOSED PARKING

PROPOSED PARKING

PROPOSED PARKING

PROPOSED PARKING

PROPOSED PARKING

PROPOSED PARKING

PROPOSED PARKING

PROPOSED PARKING

PROPOSED PARKING

PROPOSED PARKING

PROPOSED PARKING

PROPOSED PARKING

PROPOSED PARKING

PROPOSED PARKING

PROPOSED PARKING

PROPOSED PARKING

PROPOSED PARKING

PROPOSED PARKING

PROPOSED PARKING

PROPOSED PARKING

PROPOSED PARKING

PROPOSED PARKING

PROPOSED PARKING

PROPOSED PARKING

PROPOSED PARKING

PROPOSED PARKING

PROPOSED PARKING

PROPOSED PARKING

PROPOSED PARKING

PROPOSED PARKING

PROPOSED PARKING

PROPOSED PARKING

PROPOSED PARKING

PROPOSED PARKING

PROPOSED PARKING

PROPOSED PARKING

PROPOSED PARKING

PROPOSED PARKING

PROPOSED PARKING

PROPOSED PARKING

PROPOSED PARKING

PROPOSED PARKING

PROPOSED PARKING

PROPOSED PARKING

PROPOSED PARKING

PROPOSED PARKING

PROPOSED PARKING

PROPOSED PARKING

PROPOSED PARKING

PROPOSED PARKING

PROPOSED PARKING

PROPOSED PARKING

PROPOSED PARKING

PROPOSED PARKING

PROPOSED PARKING

PROPOSED PARKING

PROPOSED PARKING

PROPOSED PARKING

PROPOSED PARKING

PROPOSED PARKING

PROPOSED PARKING

PROPOSED PARKING

PROPOSED PARKING

PROPOSED PARKING

PROPOSED PARKING

PROPOSED PARKING

PROPOSED PARKING

PROPOSED PARKING

PROPOSED PARKING

PROPOSED PARKING

PROPOSED PARKING

PROPOSED PARKING

PROPOSED PARKING

PROPOSED PARKING

PROPOSED PARKING

PROPOSED PARKING

PROPOSED PARKING

PROPOSED PARKING

PROPOSED PARKING

PROPOSED PARKING

PROPOSED PARKING

PROPOSED PARKING

PROPOSED PARKING

PROPOSED PARKING

PROPOSED PARKING

PROPOSED PARKING

PROPOSED PARKING

PROPOSED PARKING

PROPOSED PARKING

PROPOSED PARKING

PROPOSED PARKING

PROPOSED PARKING

PROPOSED PARKING

PROPOSED PARKING

PROPOSED PARKING

PROPOSED PARKING

PROPOSED PARKING

PROPOSED PARKING

PROPOSED PARKING

PROPOSED PARKING

PROPOSED PARKING

PROPOSED PARKING

PROPOSED PARKING

PROPOSED PARKING

PROPOSED PARKING

PROPOSED PARKING

PROPOSED PARKING

PROPOSED PARKING

PROPOSED PARKING

PROPOSED PARKING

PROPOSED PARKING

PROPOSED PARKING

PROPOSED PARKING

PROPOSED PARKING

PROPOSED PARKING

PROPOSED PARKING

PROPOSED PARKING

PROPOSED PARKING

PROPOSED PARKING

PROPOSED PARKING

PROPOSED PARKING

PROPOSED PARKING

PROPOSED PARKING

PROPOSED PARKING

PROPOSED PARKING

PROPOSED PARKING

PROPOSED PARKING

PROPOSED PARKING

PROPOSED PARKING

PROPOSED PARKING

PROPOSED PARKING

PROPOSED PARKING

PROPOSED PARKING

PROPOSED PARKING

PROPOSED PARKING

PROPOSED PARKING

PROPOSED PARKING

PROPOSED PARKING

PROPOSED PARKING

PROPOSED PARKING

PROPOSED PARKING

PROPOSED PARKING

PROPOSED PARKING

PROPOSED PARKING

PROPOSED PARKING

PROPOSED PARKING

PROPOSED PARKING

PROPOSED PARKING

PROPOSED PARKING

PROPOSED PARKING

PROPOSED PARKING

PROPOSED PARKING

PROPOSED PARKING

PROPOSED PARKING

PROPOSED PARKING

PROPOSED PARKING

PROPOSED PARKING

PROPOSED PARKING

PROPOSED PARKING

PROPOSED PARKING

PROPOSED PARKING

PROPOSED PARKING

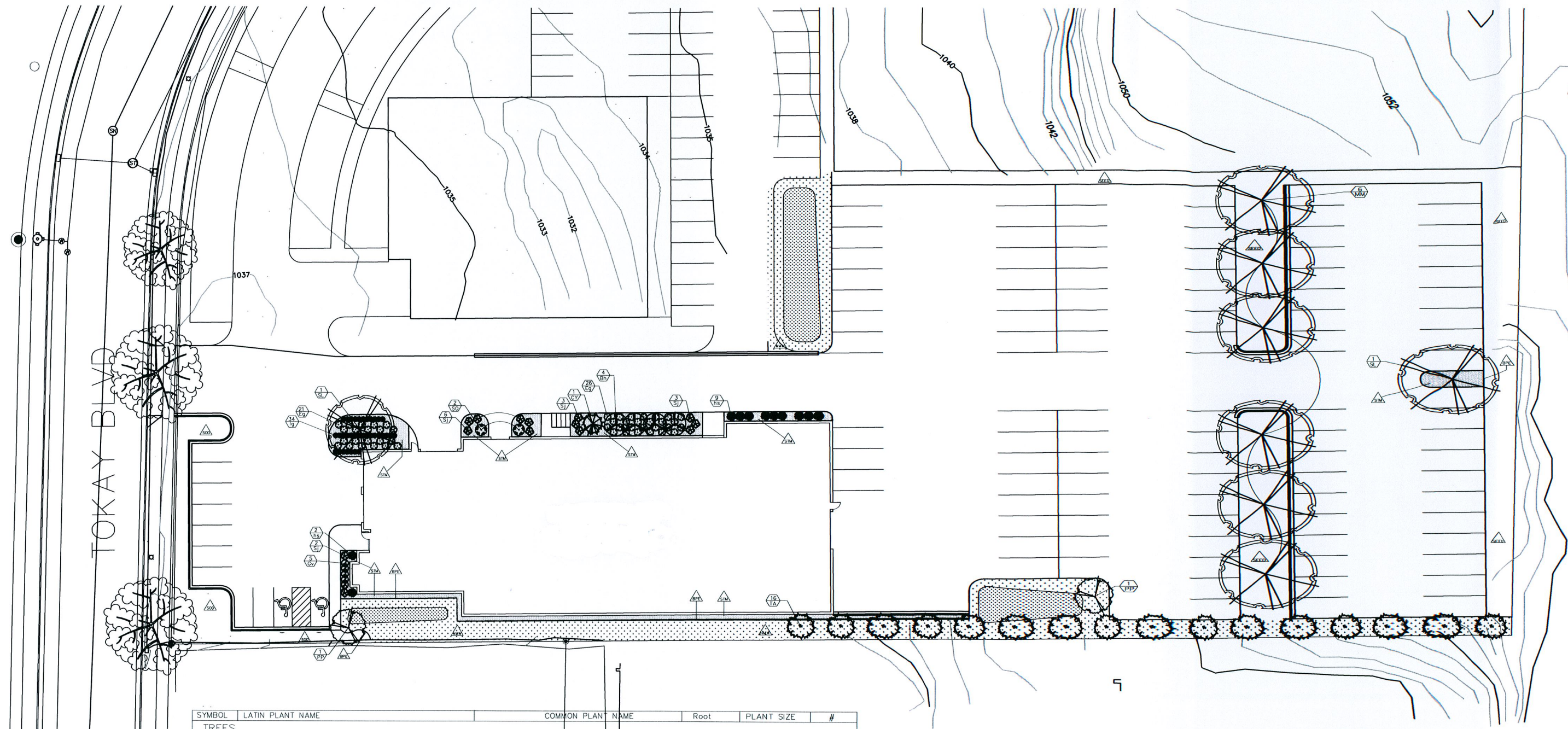
PROPOSED PARKING

PROPOSED PARKING

PROPOSED PARKING

PROPOSED PARKING

PROPOSED PARKING

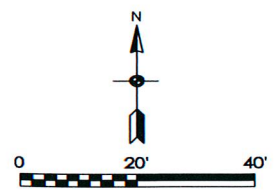


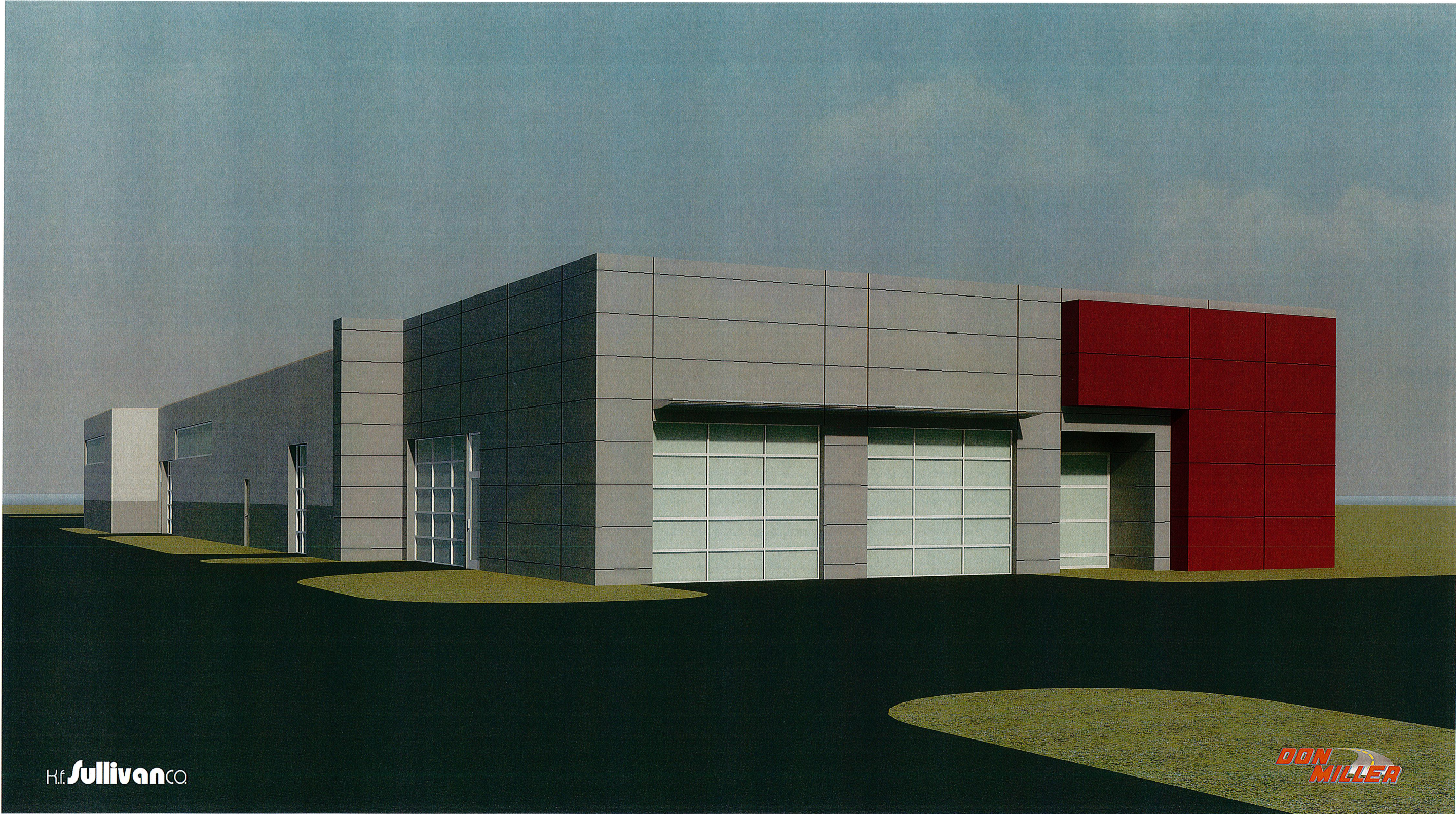
TOKAY BLVD

SYMBOL	LATIN PLANT NAME	COMMON PLANT NAME	Root	PLANT SIZE	#
TREES					
MM	Acer x freemanii 'Marmo'	Marmo Maple	B&B	2"	6
SH	Gleditsia triacanthos var. inermis 'Skycole'	Skyline Honeylocust	B&B	2"	2
Ornamental Trees					
SO	Amelanchier alnifolia 'Obelisk'	Standing Ovation Serviceberry	Cont.	#5	2
PP	Malus 'Purple Prince'	Purple Prince Crabapple	B&B	2"	2
Evergreen Trees					
CY	Taxus cuspidata 'Capitata'	Capitata Japanese Yew	B&B	5'	1
TA	Thuja occidentalis 'Techny'	Techny Arborvitae	B&B	5'	16
Evergreen Shrubs					
Gv	Buxus x 'Green Velvet'	Green Velvet Boxwood	Cont.	#5	5
Eg	Euonymus fortunei 'Emerald and Gold'	Emerald and Gold Euonymus	Cont.	#3	47
Deciduous Shrubs					
Sj	Hypericum kalmianum 'Ames'	Ames Select St. Johnswort	Cont.	#5	14
Bh	Viburnum prunifolium	Blackhaw Viburnum	B&B	3'	4
Perennials/Ornamental Grasses					
lg	Hemerocallis 'Little Grapette'	Little Grapette Daylily	Cont.	#1	34
hs	Miscanthus sinensis 'Huron Sunrise'	Huron Sunrise Silver Grass	Cont.	#1	11

-  Mineral Sod
-  Turf Seed Mix
-  No-Mow Fescue Seed Mix
-  #2 Washed Stone - Over Weed Barrier Fabric
-  Black Plastic Edging - Commercial Grade
-  PLANT LABEL # AND ABBREVIATION

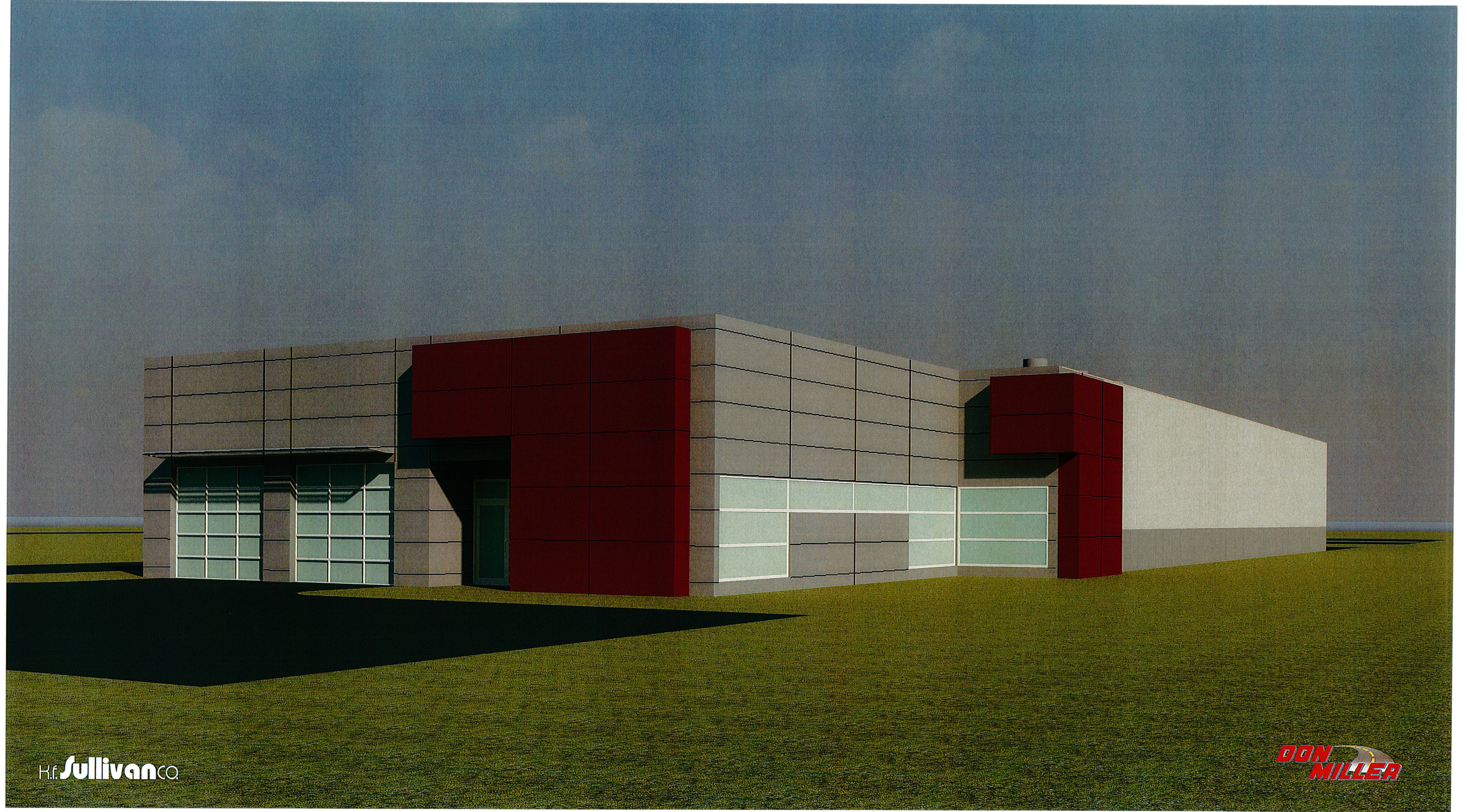
LANDSCAPE WORKSHEET			# of Stalls	110	# of Points Required	495
Element	Point Value	Quantity	Points Achieved			
Canopy Tree 2"-2.5"	35	0	0			
Deciduous Shrub	2	18	36			
Evergreen Shrub	3	52	156			
Evergreen Trees 3' Min. Ht.	15	17	255			
Small Tree 1.5"-2" Caliper	15	4	60			
Total Points			507			





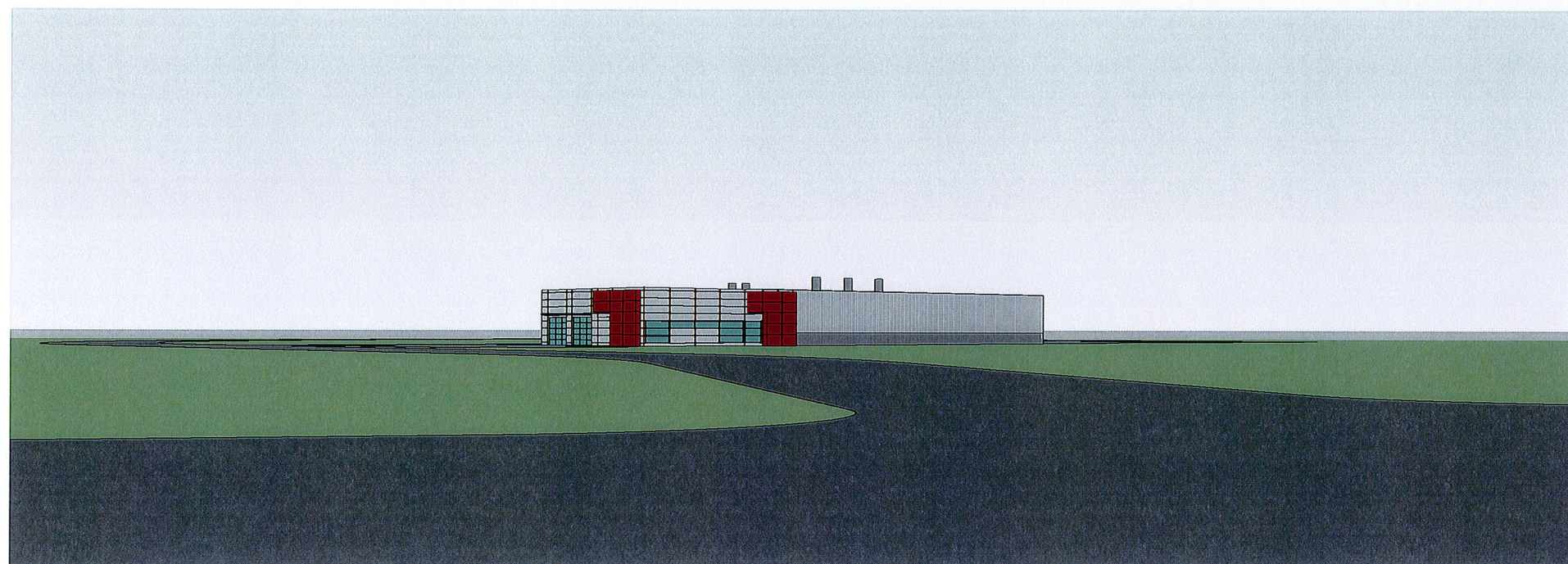
H.f. Sullivan CO.

DON MILLER

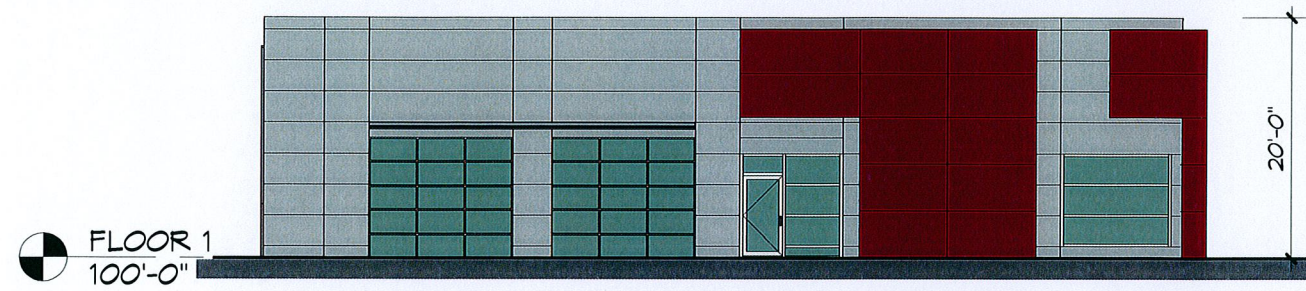


H.F. Sullivan CO

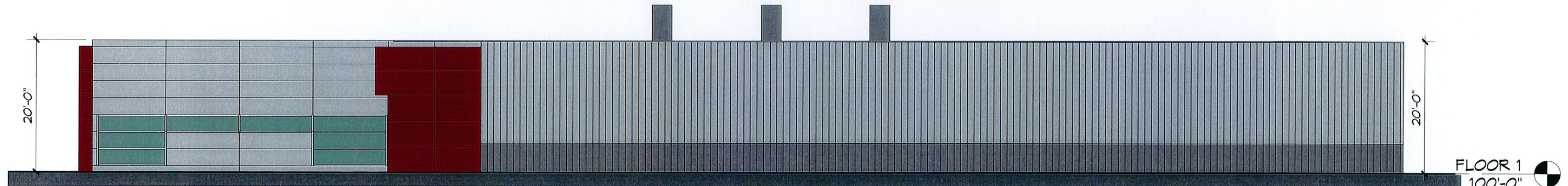
DON MILLER



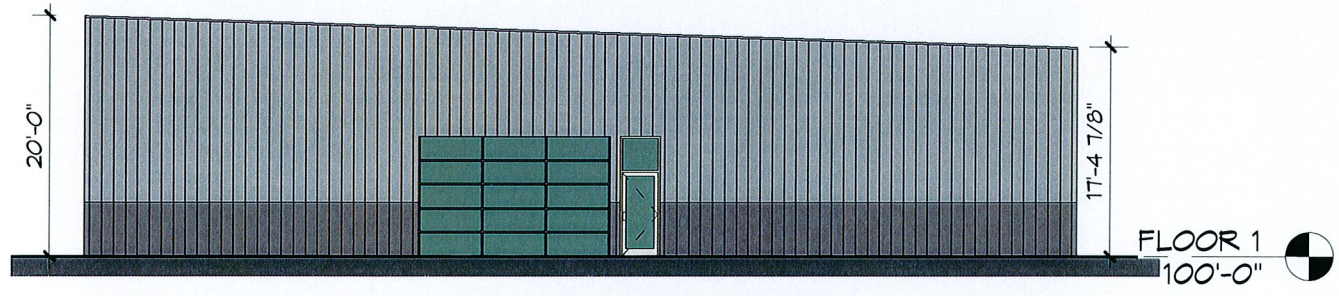
① CAMERA - ODANA RD



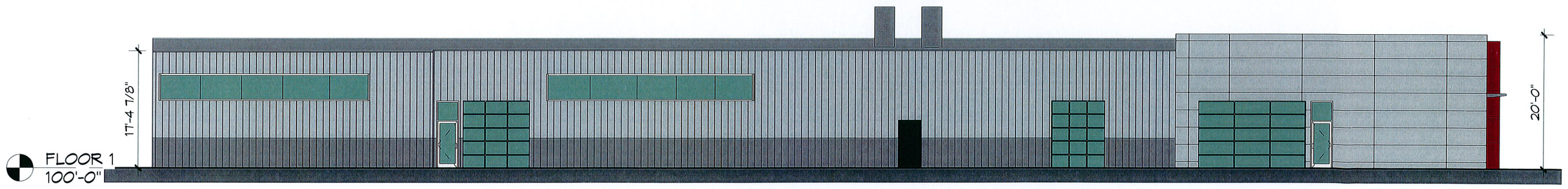
① ELEVATION - WEST
1/16" = 1'-0"



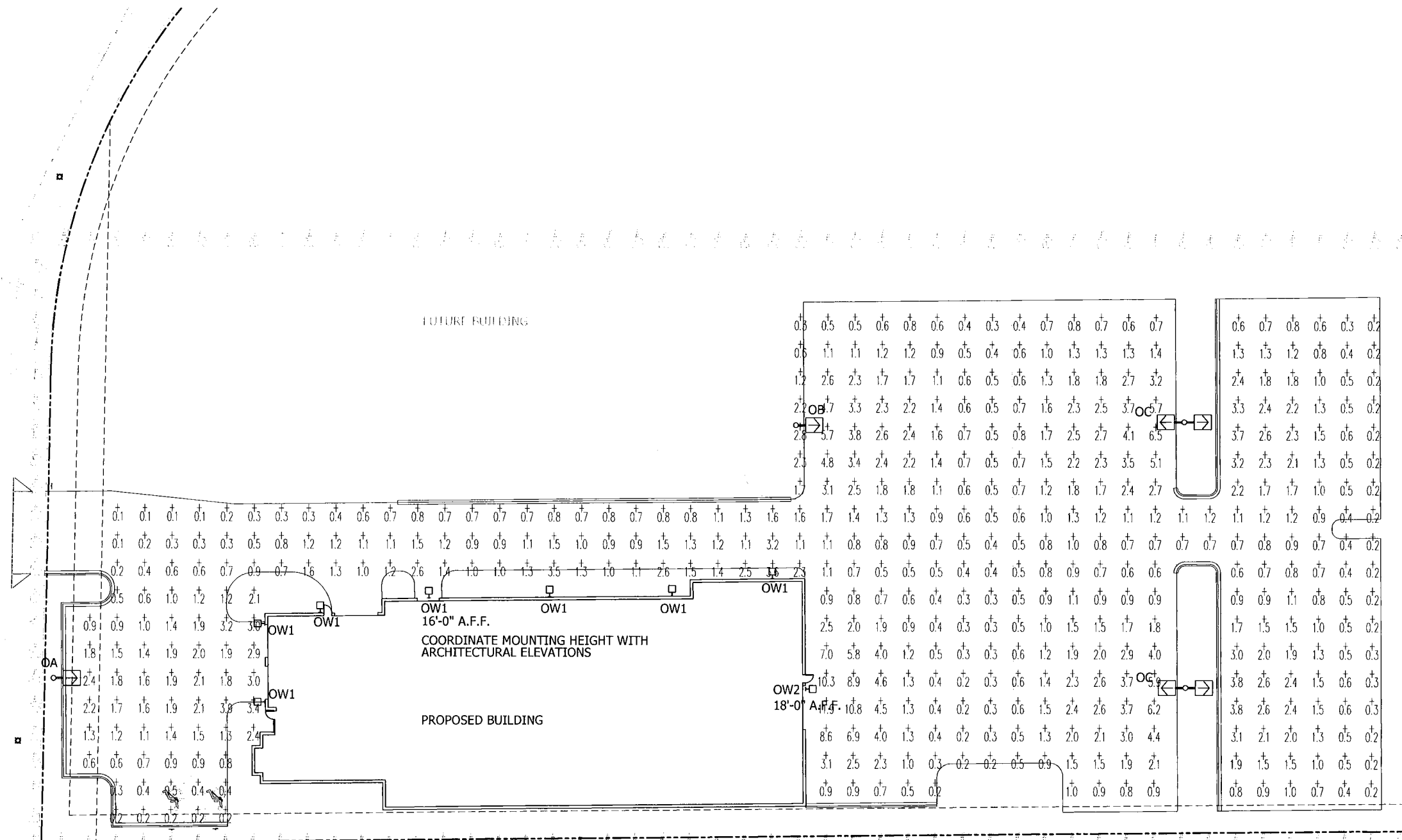
② ELEVATION - SOUTH
1/16" = 1'-0"



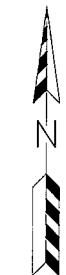
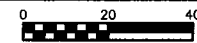
③ ELEVATION - EAST
1/16" = 1'-0"



④ ELEVATION - NORTH
1/16" = 1'-0"



1 Site Lighting Photometric Plan



DESIGN CRITERIA

ALL LIGHTING FIXTURES INSTALLED SHALL UTILIZE CLEAR FLAT LENSES WITH FULL CUT-OFF OR SHIELDED OUTPUT.

AT LEAST 50% OF THE LIGHTING FIXTURES SHALL BE EXTINGUISHED 1/2 HR PAST THE CLOSING OF THE FACILITY.

ALL POLE MOUNTED LUMINAIRES SHALL BE INSTALLED ON 25 FEET SQUARE STEEL POLES, 4" DIAMETER WITH SUITABLE EPA FOR THE QUANTITY OF LUMINAIRES INSTALLED. POLE BASES SHALL BE 24" DIAMETER AND SHALL EXTEND A MINIMUM OF 2 FEET ABOVE GRADE.

COORDINATE THE EXACT LOCATION AND HEIGHT OF ALL WALL MOUNTED LUMINAIRES WITH THE ARCHITECTURAL ELEVATIONS. ADJUST LOCATION TO BE CENTERED IN WALL PANELS WHERE POSSIBLE.

LIGHTING FIXTURE SCHEDULE					
TYPE	MANUFACTURER	CATALOG NO.	DESCRIPTION	QUANTITY	LAMPS
OA	RUUD LUMARK LITHONIA	MAC1615-M-SBL-12	FULL CUTOFF AREA LIGHT WITH INTERNAL BACKLIGHT SHIELD. PROVIDE FUSE-HOLDERS IN POLE BASE. MOUNTED ON 25 FEET SQ. STEEL POLE	1	MH150/U/PS
OB	RUUD LUMARK LITHONIA	AC1632-M-SBL-16	FULL CUTOFF AREA LIGHT WITH INTERNAL BACKLIGHT SHIELD. PROVIDE FUSE-HOLDERS IN POLE BASE. MOUNTED ON 25 FEET SQ. STEEL POLE.	1	MH320/HOR/PS
OC	RUUD LUMARK LITHONIA	AC1632-M	SAME AS TYPE OB - TWIN HEADS @ 180 DEG. BACKLIGHT SHIELD NOT REQUIRED.	2	MH320/HOR/PS
OW1	RUUD LUMARK LITHONIA	MGWC0407-D	12" FULL CUTOFF SECURITY LIGHT WALL MOUNTED 16 FEET A.F.F. FURNISH UNEVEN SURFACE MOUNTING PLATE IF NECESSARY	7	MH70/U/PS
OW2	RUUD LUMARK LITHONIA	MGWC0632-M	18" FULL CUTOFF SECURITY LIGHT WALL MOUNTED 18 FEET A.F.F. FURNISH UNEVEN SURFACE MOUNTING PLATE IF NECESSARY	7	MH70/U/PS

- NOTES
- ARROWS INDICATE DIRECTION OF OPTICS WITHIN THE FIXTURE HOUSING.
 - ALL POLE MOUNTED FIXTURES SHALL HAVE FULL CUT-OFF OPTICS WITH FLAT GLASS LENSES.
 - CATALOG NUMBERS DERIVED FROM RUUD LIGHTING, EQUALS BY LUMARK OR LITHONIA ARE ACCEPTABLE.

POINT BY POINT CALCULATION SUMMARY				
AREA NAME	AREA DESCRIPTION	AVERAGE	MAXIMUM	MINIMUM
PARKING +	PARKING LOT FOR CUSTOMER VEHICLES HORIZONTAL CALCULATION ON PAVEMENT VALUES LISTED ARE MAINTAINED FOOTCANDLES	1.5	11.9	0.1

POINTS INDICATED WITH # AND GRAY ARE SHOWN FOR REFERENCE ONLY AND ARE NOT INCLUDED IN THE CALCULATION ABOVE.

REVISIONS:	
09-28-11	UDC-Submittal

Don Miller Body Shop
5739 Tokay Blvd.
Madison, WI 53719

2861 Index Road
Madison WI 53713
608/271-2046
Fax 271-0160



Electric Construction Inc.
Electrical Design, Contracting & Consulting

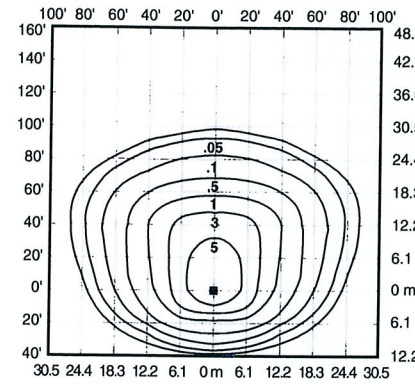
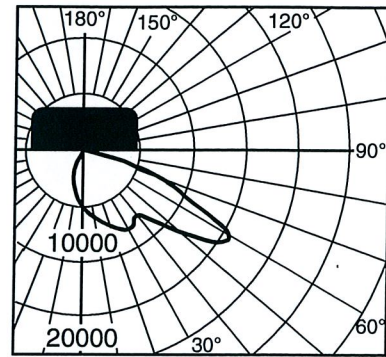
JOB NUMBER
11068
DRAWN BY: BAR
SCALE: 1" = 20'-0"
DATE: 08/28/11

SHEET
E0.1a

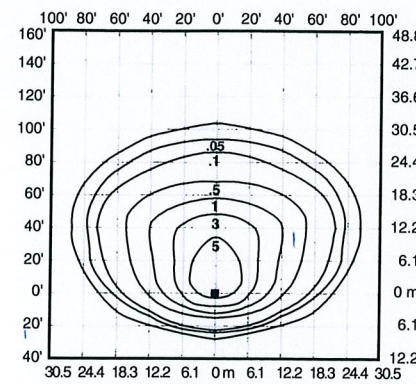
EPA RATING

EPA 0.8 for single fixture with 0° tilt (Consult factory for EPA rating on multiple units).

Isofootcandle plots show initial footcandles at grade. (Footcandles ÷ 0.0929 = Lux)

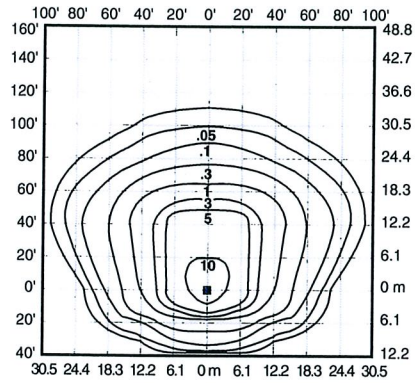
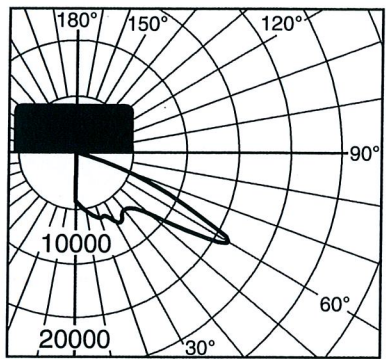


Isofootcandle plot of 400W MH Area Cutoff Floodlight at 25' (7.6 m) mounting height, 0° vertical tilt, with backlight shield removed. (Plan view)

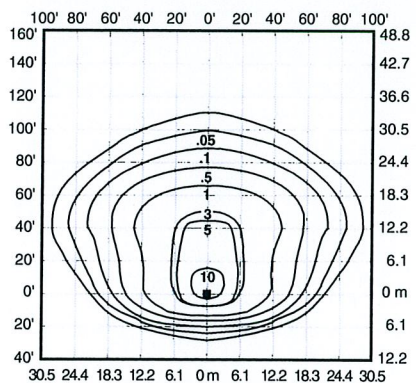


Isofootcandle plot of 400W MH Area Cutoff Floodlight at 25' (7.6 m) mounting height, 0° vertical tilt, with backlight shield located for backlight cutoff. (Plan view)

Lighting Sciences Inc.
Certified Test Report No. LSI 10553
Candlepower distribution curve of 400W MH Area Cutoff Floodlight without backlight shield.



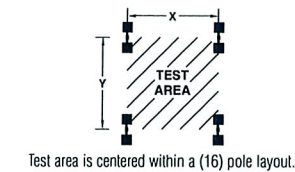
Isofootcandle plot of 400W HPS Area Cutoff Floodlight at 25' (7.6 m) mounting height, 0° vertical tilt, with backlight shield removed. (Plan view)



Isofootcandle plot of 400W HPS Area Cutoff Floodlight at 25' (7.6 m) mounting height, 0° vertical tilt, with backlight shield located for backlight cutoff. (Plan view)

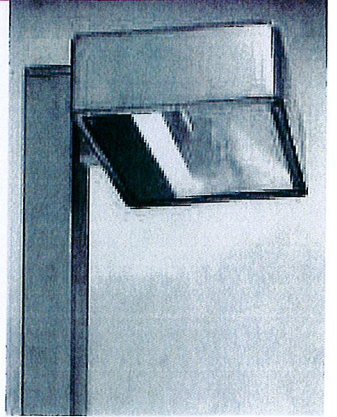
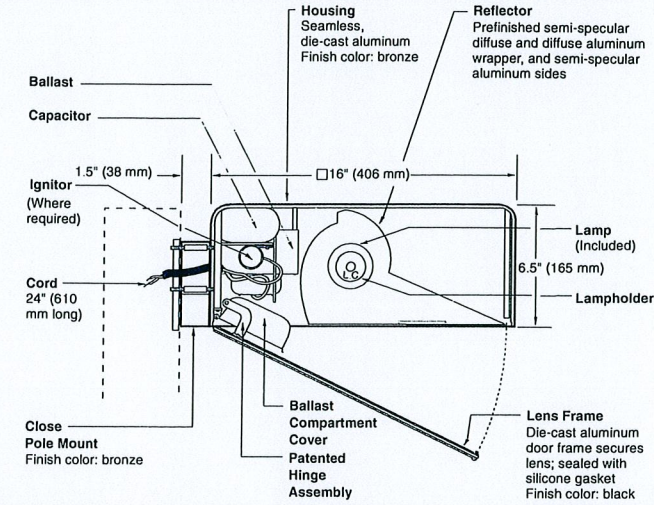
Lighting Sciences Inc.
Certified Test Report No. LSI 10246
Candlepower distribution curve of 250W HPS Area Cutoff Floodlight without backlight shield.

Pole-spacing Example Data



Average Initial Light Levels at Grade
2 Fixtures per pole @ 180°
(Footcandles ÷ 0.0929 = Lux)

Catalog #	Lamp Type	Lamp Lumens	Mounting Height	Max. Recommended Pole-spacing X x Y	Footcandles	Lux
AC1417-M	175W MH	12,000	15' (4.6 m) 20' (6.1 m)	60' (18.3 m) x 85' (25.9 m) 75' (22.9 m) x 110' (33.5 m)	3.56 2.11	38 23
AC1425-M	250W MH	20,000	20' (6.1 m) 25' (7.6 m)	75' (22.9 m) x 110' (33.5 m) 95' (29.0 m) x 140' (42.7 m)	3.51 2.10	38 23
AC1440-M	400W MH	32,000	25' (7.6 m) 30' (9.1 m)	95' (29.0 m) x 140' (42.7 m) 115' (35.1 m) x 165' (50.3 m)	3.36 2.29	36 25
AC1525-M	250W HPS	28,500	20' (6.1 m) 25' (7.6 m)	75' (22.9 m) x 110' (33.5 m) 95' (29.0 m) x 140' (42.7 m)	4.83 2.89	52 31
AC1540-M	400W HPS	50,000	25' (7.6 m) 30' (9.1 m)	95' (29.0 m) x 140' (42.7 m) 115' (35.1 m) x 165' (50.3 m)	5.08 3.37	55 36



SPEC #	WATTAGE	CATALOG #
PULSE START METAL HALIDE		
	200W PSMH	AC1620-(a)(b)
	250W PSMH	AC1625-(a)(b)
→	320W PSMH	AC1632-(a)(b)
	350W PSMH	AC1635-(a)(b)
	400W PSMH	AC1640-(a)(b)
METAL HALIDE		
	175W MH	AC1417-(a)(b)
	250W MH	AC1425-(a)(b)
	400W MH	AC1440-(a)(b)
HIGH PRESSURE SODIUM		
	250W HPS	AC1525-(a)(b)
	400W HPS	AC1540-(a)(b)

Specify (a) Voltage & (b) Options.
⊕ Reduced envelope ED28 lamp.

(a) VOLTAGE SUFFIX KEY	(b) OPTIONS (factory-installed)
M 120/208/240/277V (Standard)	-(a)F Fusing
T 120/277/347V (Canada Only) (Standard)	-(a)P Button Photocell
1 120V	-5P External Photocell (for 480V)
2 277V	Q Quartz Standby (includes 100W quartz lamp) (N/A on 277V Reactor)
27 277V Reactor (PSMH Only)	
3 208V	
4 240V	
5 480V	
6 347V (Canada Only)	

For voltage availability outside the US and Canada, see Bulletin TD-9 or contact your Ruud Lighting authorized International Distributor.

GENERAL DESCRIPTION

60° forward throw sharp cutoff luminaire for HID lamp, totally enclosed. Housing is seamless, die-cast aluminum. Mounting consists of a 1.8" (44 mm) wide by 4.5" (114 mm) high by 1.5" (38 mm) long extruded aluminum arm. The arm is held in place with two 3/8" (9 mm) mounting rods fastened to a steel backing plate inside the pole, and by two nuts inside the fixture housing. Mounting rods are provided with sealing washers to prevent water leakage. Lens assembly consists of rigid aluminum frame and high-impact, clear-tempered glass.

ELECTRICAL

Fixture includes clear, mogul-base lamp; 320 – 400W PSMH and 400W MH utilize the ED28 reduced envelope lamp. Pulse-rated porcelain enclosed, 4kv-rated screw-shell-type lampholder with spring-loaded center contact and lamp grips. Lamp ignitor included where required. All ballast assemblies are high-power factor and use the following circuit type:

Reactor (277V PSMH)
200 – 400W PSMH
CWA — Constant Wattage Autotransformer
200 – 400W PSMH; 175 – 400W MH;
250 – 400W HPS

PATENTS

US 4,689,729

FINISH

Exclusive DeltaGuard® finish features an E-coat epoxy primer with medium bronze ultra-durable powder topcoat, providing excellent resistance to corrosion, ultraviolet degradation and abrasion. The finish is covered by our seven-year limited warranty.

LABELS

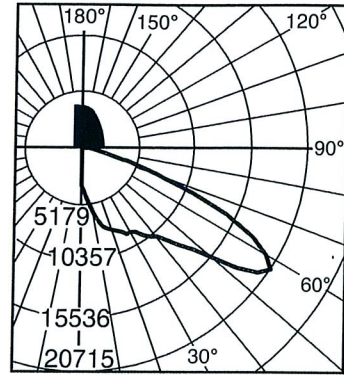
ANSI lamp wattage label supplied, visible during relamping. UL Listed in US and Canada for wet locations and enclosure classified IP65 per IEC 529 and IEC 598.

ACCESSORIES

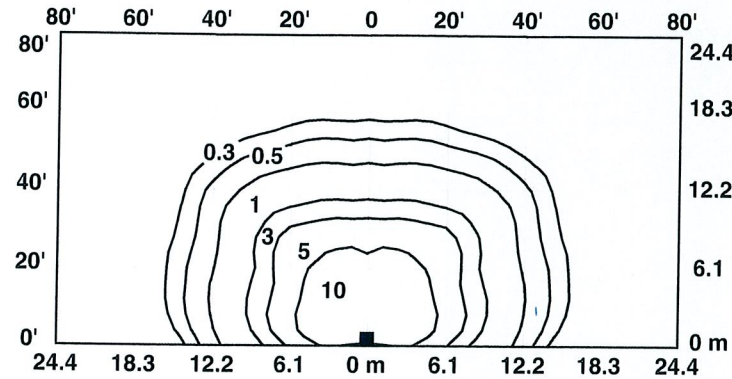
FWG-16 Wire Guard
SBL-16 Backlight Shield

16" FULL CUTOFF WALL PACK

Isofootcandle plots show initial footcandles at grade. (Footcandles ÷ 0.0929 = Lux)

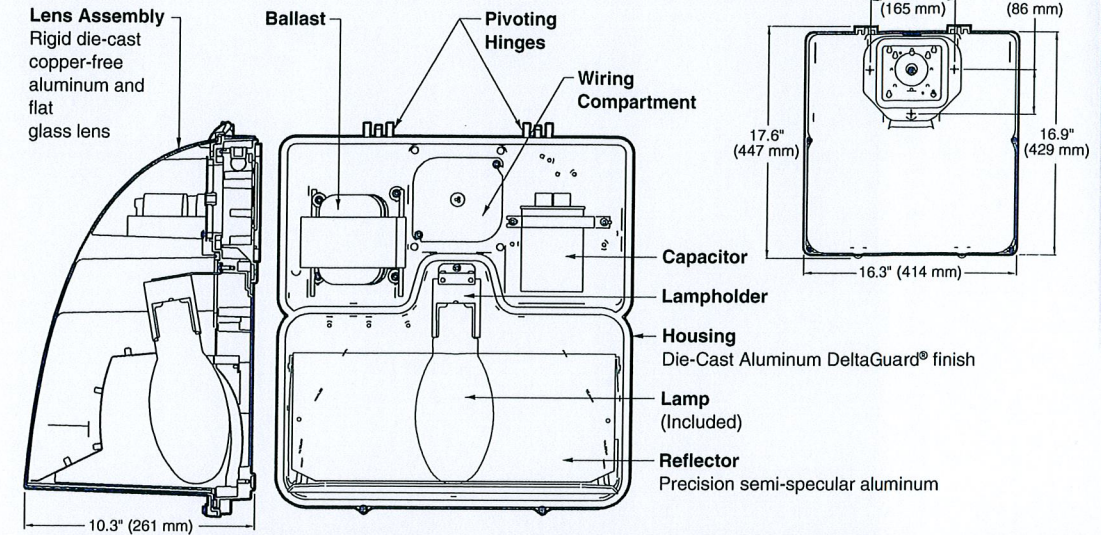


Candlepower distribution curve of 400W PSMH Full Cutoff Wall Pack.



Isofootcandle plot of one 400W PSMH Full Cutoff Wall Pack at 20' (6.1 m) mounting height.

16" FULL CUTOFF WALL PACK



SPEC #	WATTAGE	CATALOG #
PULSE START METAL HALIDE		
	250W PSMH	GWC0625-(a)(b)
→	320W PSMH	GWC0632-(a)(b)
	400W PSMH	GWC0640-(a)(b)
METAL HALIDE		
	175W MH	GWC0417-(a)(b)
	250W MH	GWC0425-(a)(b)
	400W MH	GWC0440-(a)(b)
HIGH PRESSURE SODIUM		
	250W HPS	GWC0525-(a)(b)
	400W HPS	GWC0540-(a)(b)
COMPACT FLUORESCENT*		
	57W CFL	GWC0257-(a)(b)
	70W CFL	GWC0270-(a)(b)

Specify (a) Voltage & (b) Options.
*Consult factory for alternate lamp wattages.
⊕ Reduced envelope ED28 lamp.

(a) VOLTAGE SUFFIX KEY	
M	120/208/240/277V (Standard)
T	120/277/347V (Canada Only)
UL	120-277V Universal Voltage (CFL only) (Standard)
1	120V
2	277V
27	277V Reactor (PSMH Only)
3	208V
4	240V
5	480V
6	347V (Canada Only)

For voltage availability outside the US and Canada, see Bulletin TD-9 or contact your Ruud Lighting authorized International Distributor.

(b) OPTIONS (factory-installed)	
-(a)F	Fusing
-(a)P	Button Photocell
Q	Quartz Standby (includes 100W quartz lamp) (N/A on 277V Reactor)

Specify (a) Single Voltage — See Voltage Suffix Key
Consult factory for IP65 option.

GENERAL DESCRIPTION

Full Cutoff Wall Pack fixture for HID lamp, totally enclosed. Housing is seamless copper-free die-cast aluminum. Lens assembly consists of a hinged, rigid die-cast copper-free aluminum frame and clear borosilicate glass lens held securely inside. Lens frame is easily removable and allows for easy attachment and serviceability using top pivoting hinge. Complete silicone gasketing around lens and gasketing at mounting provide a watertight seal. Ballast compartment is separate, and gasketed, from the optical chamber. A precision specular aluminum reflector provides forward throw with wide distribution to ensure wide fixture spacings and maximum light levels. Fixture design provides excellent IES Full Cutoff light distribution without glare. The optical chamber is sealed to reduce dirt and insect contamination. Furnished with e-coated, copper-free, lightweight mounting box designed for installation over standard 4-inch square or octagonal and single-gang J boxes and for conduit entry from top, sides and rear. Designed and approved for easy through-wiring. All PSMH and MH fixtures use vertical-lamp position. All HPS and CFL fixtures use horizontal-lamp position.

ELECTRICAL

Fixture includes a clear, mogul-base lamp. 320 – 400W PSMH and 400W MH utilize the ED28 reduced envelope lamp. Pulse-rated porcelain enclosed, 4kv-rated screw-shell-type lampholder with spring-loaded center contact and lamp locking feature. Fluorescent fixture includes one 57 or 70W quad tube/4-pin compact fluorescent lamp. Fixtures require a minimum 90°C temperature feed wire. All ballast assemblies are high-power factor and use the following circuit type:

Reactor (277V PSMH)
250 – 400W PSMH

CWA — Constant Wattage Autotransformer
250 – 400W PSMH; 175W – 400W MH,
250 – 400W HPS

Electronic (120 – 277V Universal Voltage)
(minimum starting temperature 0°F [-18°C])
57 and 70W CFL

LABELS

ANSI lamp wattage label supplied, visible during relamping. UL Listed in the US and Canada for wet locations.

FINISH

Exclusive DeltaGuard® finish features an E-coat epoxy primer with medium bronze ultra-durable powder topcoat, providing excellent resistance to corrosion, ultraviolet degradation and abrasion. The finish is covered by our seven-year limited warranty.

PATENTS

Patents Pending.

ACCESSORIES

PC-1	Button Photocell (for fixtures set to 120V)
PC-2	Button Photocell (for fixtures set to 208, 240, 277V)
PC*6	Button Photocell (for fixtures set to 347V)
WM-GW	Uneven Surface Mounting Plate
Consult Factory	Emergency Egress (CFL only – remote mounted)