

CIPP REHAB OF SANITARY SEWERS

City of Madison Engineering Department

CURED IN PLACE PIPE REHAB (CIPP)

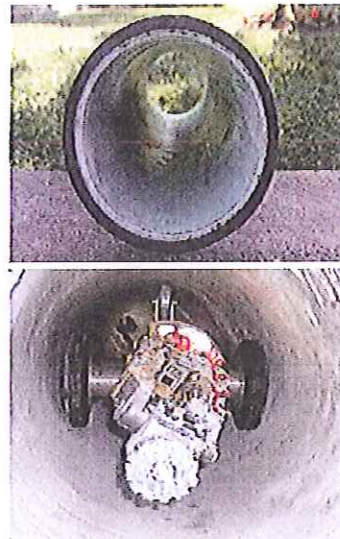
Cured-In-Place-Pipe (CIPP) is a trenchless technology used to rehabilitate damaged and deteriorating sanitary and storm sewer. Since 2004 the City has used CIPP to rehab more than 88,000 linear feet of sanitary sewer at an average cost of less than \$ 30/lf.

The CIPP process consists of inserting a resin-saturated felt tube into the damaged pipe through adjoining access structures. Hot water or steam is used to cure the resin and form a tight-fitting, jointless and corrosion resistant replacement pipe. After curing, the service laterals are reinstated with a robotic cutter.

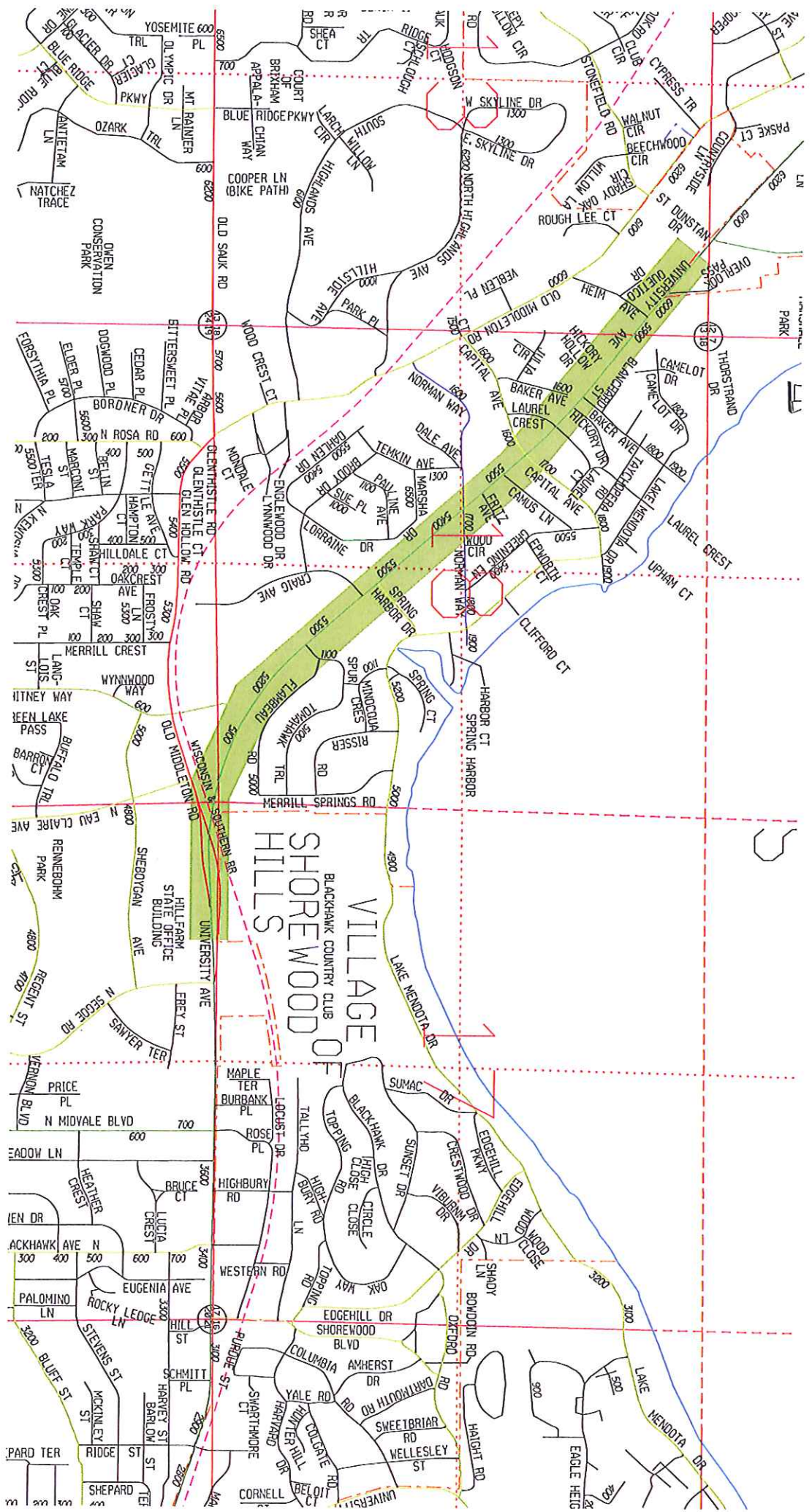
Typically, the complete rehab of an individual section of sewer main is completed within eight (8) hours. By eliminating the need to excavate, CIPP provides a structurally sound pipe at lower cost, is completed faster, keeps traffic moving, and helps preserve above ground trees.

CIPP REHAB CITY OF MADISON PREVIOUS YEARS

Pipe Size	CIPP LINEAR FEET REHAB PER YEAR						Totals
	2004	2006	2007	2008	2010	2011	
6"	--	600	--	1,068	--	772	2,781
8"	8,126	15,400	6,895	17,500	7,402	15,918	71,241
10"	--	956	--	895	--	2,843	4,694
12"	--	650	2,758	2,956	--	103	6,467
24"	--	--	2,585	--	--	--	2,585
Grouting	92	250	129	167	114	175	927
Rehab Pipe LF	8,218	17,856	12,367	22,586	7,516	20,152	88,695



CIPP Proposed Work 2012 - Phase 1		
West Side CIPP: Raymond Rd / Whitney Way Area	City Wide CIPP in connection to other contracts	Total Linear Feet in Contract
Balsam Rd	University Av (Segoe - Allen Blvd)	8" - 22,588 LF
Barton Rd	Manitou Way (Seminole - Tumalo)	10" - 203 LF
Cameron Dr		12" - 201 LF
Crabapple Ln		
Rae Ln		
Raymond Rd		Laterals - 239
Russet Rd		
Riva Rd		
Thrush Ln		



VILLAGE OF SHOREWOOD HILLS

BLACKHAWK COUNTRY CLUB
HILL FARM STATE OFFICE BUILDING

Map labels include street names such as Yosemite, Blue Ridge, Harbor, University, and Harbor. Other labels include 'DIXON CONSERVATION PARK', 'LAKE MENDOTA', and 'BLACKHAWK COUNTRY CLUB'. The map shows a grid of streets with various street names and addresses. A prominent green diagonal band runs from the top left towards the bottom right. The map is oriented with North at the top.