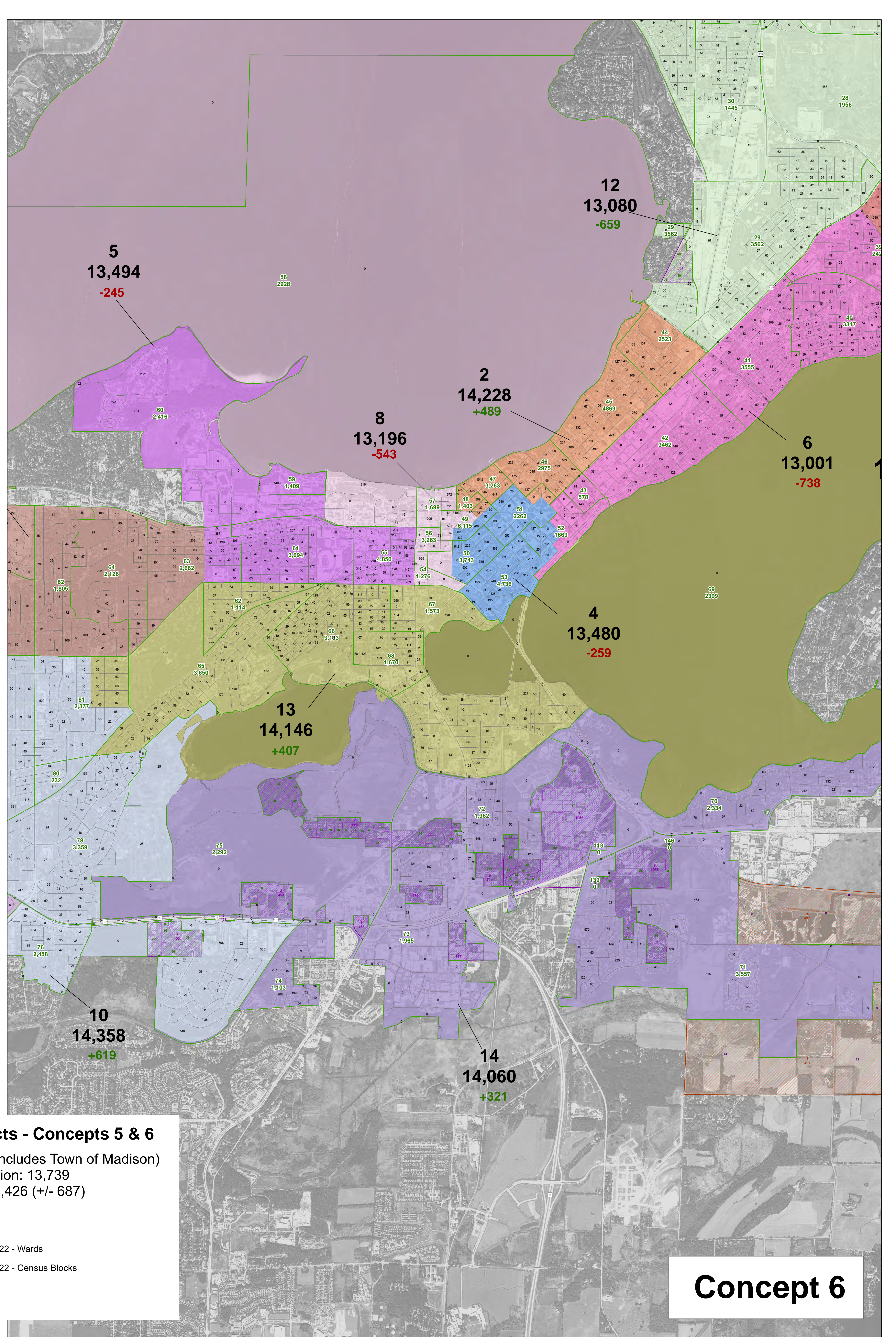
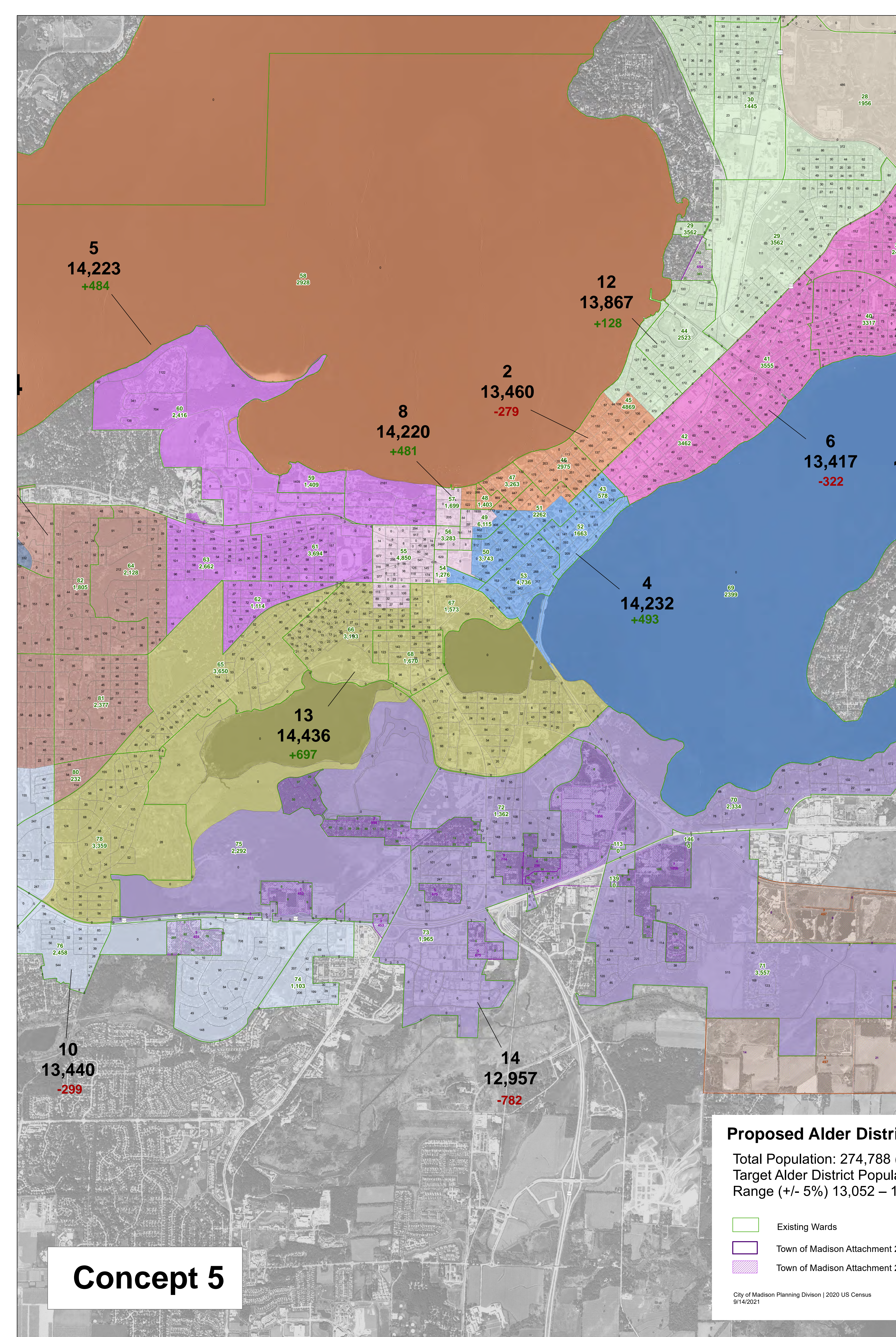


**Proposed Alder Districts - Concepts 5 & 6**  
 Total Population: 274,788 (Includes Town of Madison)  
 Target Alder District Population: 13,739  
 Range (+/- 5%) 13,052 – 14,426 (+/- 687)

- Existing Wards
- Town of Madison Attachment 2022 - Wards
- Town of Madison Attachment 2022 - Census Blocks

City of Madison Planning Division | 2020 US Census  
9/14/2021



**Proposed Alder Districts - Concepts 5 & 6**  
 Total Population: 274,788 (Includes Town of Madison)  
 Target Alder District Population: 13,739  
 Range (+/- 5%) 13,052 – 14,426 (+/- 687)

- Existing Wards
- Town of Madison Attachment 2022 - Wards
- Town of Madison Attachment 2022 - Census Blocks

City of Madison Planning Division | 2020 US Census  
9/14/2021

**Proposed Alder Districts - Concepts 5 & 6**

Total Population: 274,788 (Includes Town of Madison)  
 Target Alder District Population: 13,739  
 Range (+/- 5%) 13,052 – 14,426 (+/- 687)

- Existing Wards
  - Town of Madison Attachment 2022 - Wards
  - Town of Madison Attachment 2022 - Census Blocks
  - Town of Blooming Grove Attachment 2027 - Wards
  - Town of Blooming Grove Attachment 2027 - Census Blocks
- City of Madison Planning Division | 2020 US Census  
8/14/2021

