

City of Madison  
Department of Public Works  
**PARKS DIVISION**

City-County Building, Suite 104  
210 Martin Luther King, Jr. Blvd.  
Madison, WI 53703

*play*  
**MADISON  
PARKS**

Graphical Scale

0 25 ft



PROJECT:

**PARK PAVING  
2017**

**ALLIED PARK  
2348 REVIVAL RIDGE  
MADISON, WI 53703**

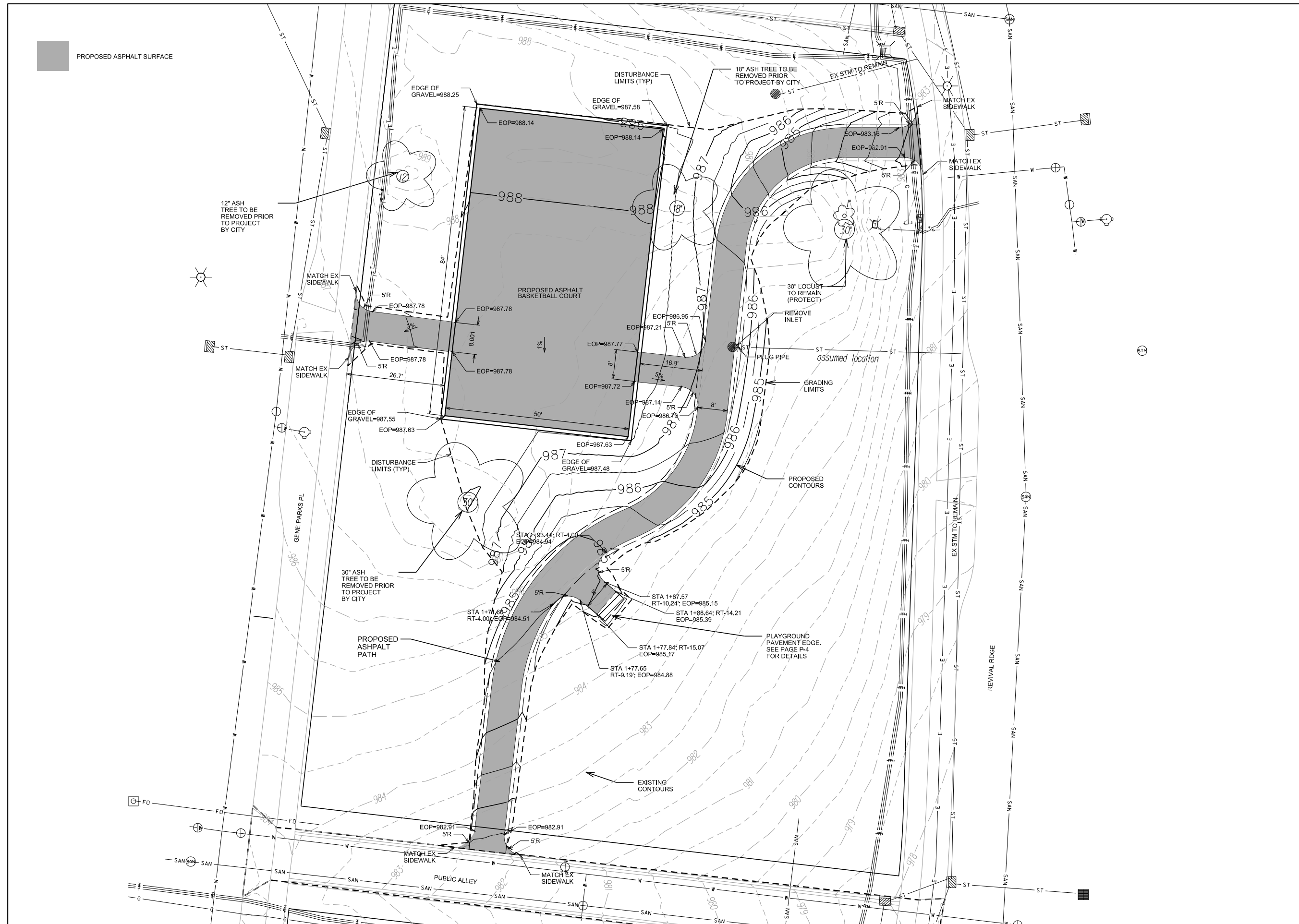
Although every effort has been made in preparing these plans and checking them for accuracy, the contractor and subcontractors must check all details and dimensions of their trade and be responsible for the same.

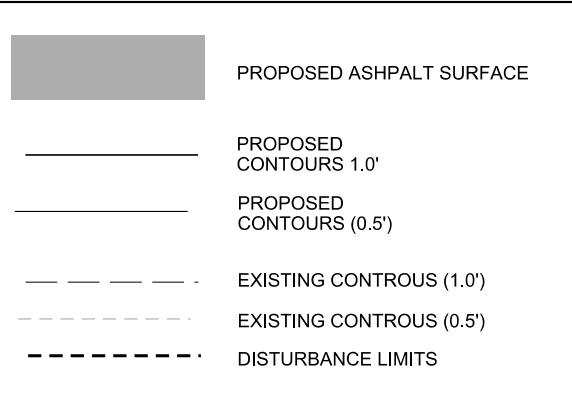
| ITEM      | DATE       |
|-----------|------------|
| Drawn by: | xx-xx-xxxx |
|           |            |
|           |            |
|           |            |
|           |            |
|           |            |

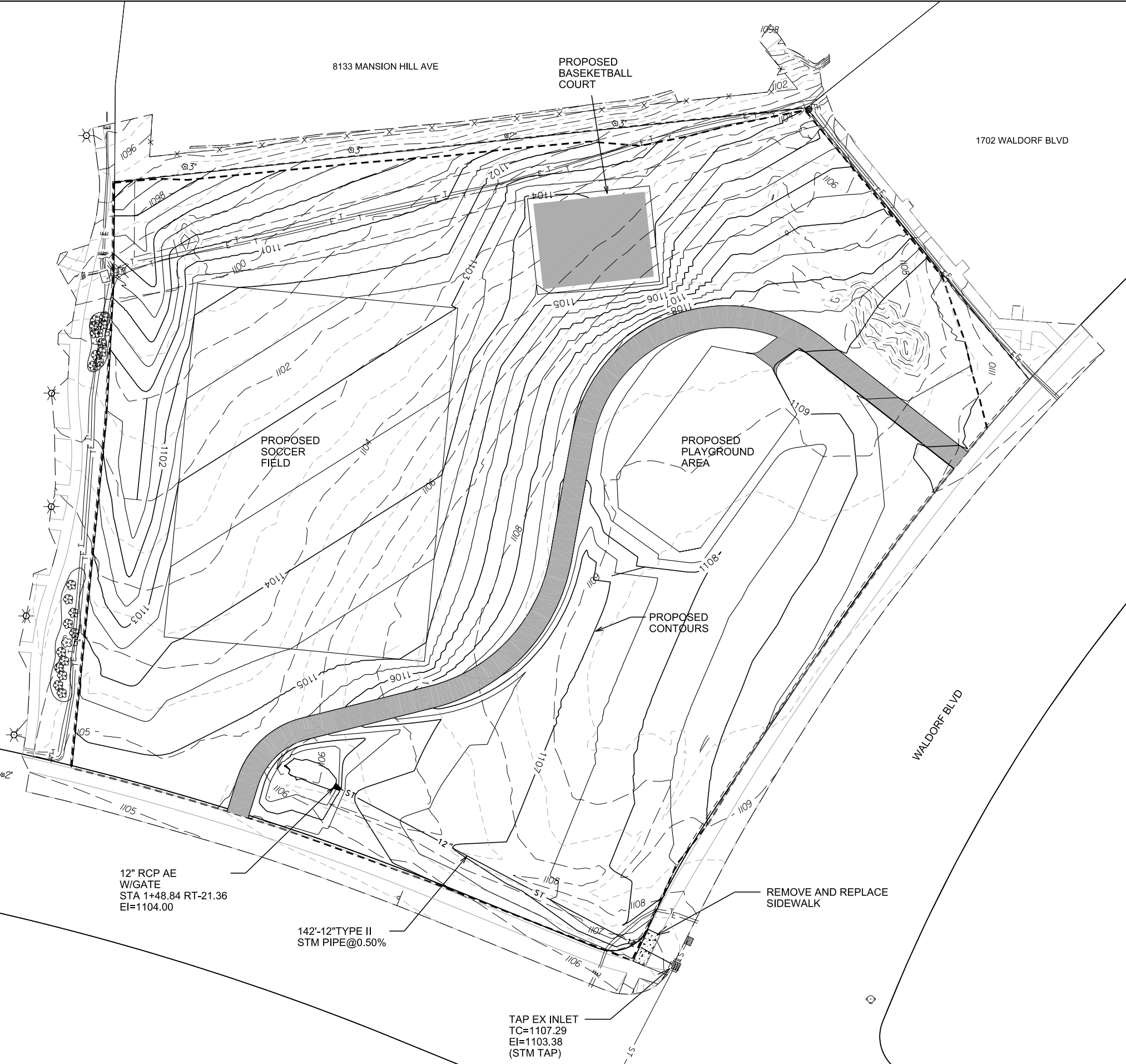
PUBLIC WORKS PROJECT #:  
**7959**

SHEET TITLE:  
**SITE GRADING**

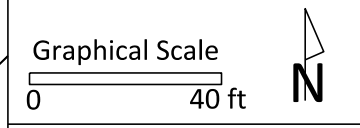
SHEET NUMBER:  
**P-1**




  
 PROPOSED ASPHALT SURFACE
   
 PROPOSED CONTOURS 1.0'
   
 PROPOSED CONTOURS (0.5')
   
 EXISTING CONTOURS (1.0')
   
 EXISTING CONTOURS (0.5')
   
 DISTURBANCE LIMITS



**City of Madison**  
 Department of Public Works  
**PARKS DIVISION**  
 City-County Building, Suite 104  
 210 Martin Luther King, Jr. Blvd.  
 PO Box 2987  
 Madison, WI 53701-2987  
*play*  
**MADISON PARKS**



PROJECT:  
**WALDORF PARK IMPROVEMENTS**

Although every effort has been made in preparing these plans and checking them for accuracy, the contractor and subcontractors must check all details and dimensions of their trade and be responsible for the same.

| ITEM          | DATE       |
|---------------|------------|
| Drawn by: CCS | 7-5-16     |
| Approved by:  | xx-xx-xxxx |
|               |            |
|               |            |
|               |            |

PUBLIC WORKS PROJECT #:  
**TBD**

SHEET TITLE:  
**SITE GRADING**

SHEET NUMBER:  
**P-1**



TO NORTH SHORE

EIGHTH ADDITION  
TO NORTH SHORE

RESURFACE  
BASEKETBALL  
COURT

04

611A-470N

LERDAHL PARK

LERDAHL RD

DOC 1175867

289.05'

73.25'

70.0'

01-0

02-8

288.1'

03-6

29-2

04-4

05-2

06-0

28-4

PT VAC DOC 0929159

27-0

529

546

602

3514

3500

3513

34-1

30-9

15

136

101

118

18-3

R=15'

106

60'

160'

162.30'

31.67'

35.96'

167.7'

160.0'

135.6'

124.5'

133.27'

85.0'

143.2'

DOC 0940377

76

71.73'

106

106

106

106

106

106

106

106

106

106

106

106

106

106

106

106

106

106

106

106

106

106

106

106

136.0'

136.0'

136.0'

136.0'

136.0'

136.0'

136.0'

136.0'

136.0'

136.0'

136.0'

136.0'

136.0'

136.0'

136.0'

136.0'

136.0'

136.0'

136.0'

136.0'

136.0'

136.0'

136.0'

136.0'

136.0'

136.0'

136.0'

136.0'

136.0'

136.0'

136.0'

136.0'

136.0'

136.0'

136.0'

136.0'

136.0'

136.0'

136.0'

136.0'

136.0'

136.0'

136.0'

136.0'

136.0'

136.0'

136.0'

136.0'

136.0'

136.0'

136.0'

136.0'

136.0'

136.0'

136.0'

136.0'

136.0'

136.0'

136.0'

136.0'

136.0'

136.0'

136.0'

136.0'

136.0'

136.0'

136.0'

136.0'

136.0'

136.0'

136.0'

136.0'

136.0'

136.0'

136.0'

136.0'

136.0'

136.0'

136.0'

136.0'

136.0'

136.0'

136.0'

136.0'

136.0'

136.0'

136.0'

136.0'

136.0'

136.0'

136.0'

136.0'

136.0'

136.0'

136.0'

136.0'

136.0'

136.0'

136.0'

136.0'

136.0'

136.0'

136.0'

136.0'

136.0'

136.0'

136.0'

136.0'

136.0'

136.0'

136.0'

136.0'

136.0'

136.0'

136.0'

136.0'

136.0'

136.0'

136.0'

136.0'

136.0'

136.0'

136.0'

136.0'

136.0'

136.0'

136.0'

136.0'

136.0'

136.0'

136.0'

136.0'

136.0'

