



GRANDVIEW COMMONS
RETAIL BUILDING 'C3'

Cottage Grove Road & Gemini Drive
Madison, Wisconsin 53718

city of madison udc submittal

JLA
architects

JLA PROJECT NUMBER: 12-0514-01

OCTOBER 31, 2012



**VERIDIAN
 HOMES**

VERIDIAN HOMES

**GRANDVIEW COMMONS
 RETAIL BUILDING 'C3'**

PROGRESS DOCUMENTS

These documents reflect progress and intent and may be subject to change, including additional detail. These are not final construction documents and should not be used for final bidding or construction-related purposes.

DATE OF ISSUANCE SEPTEMBER 14, 2012

Revision Schedule

Mark	Description	Date

SHEET TITLE

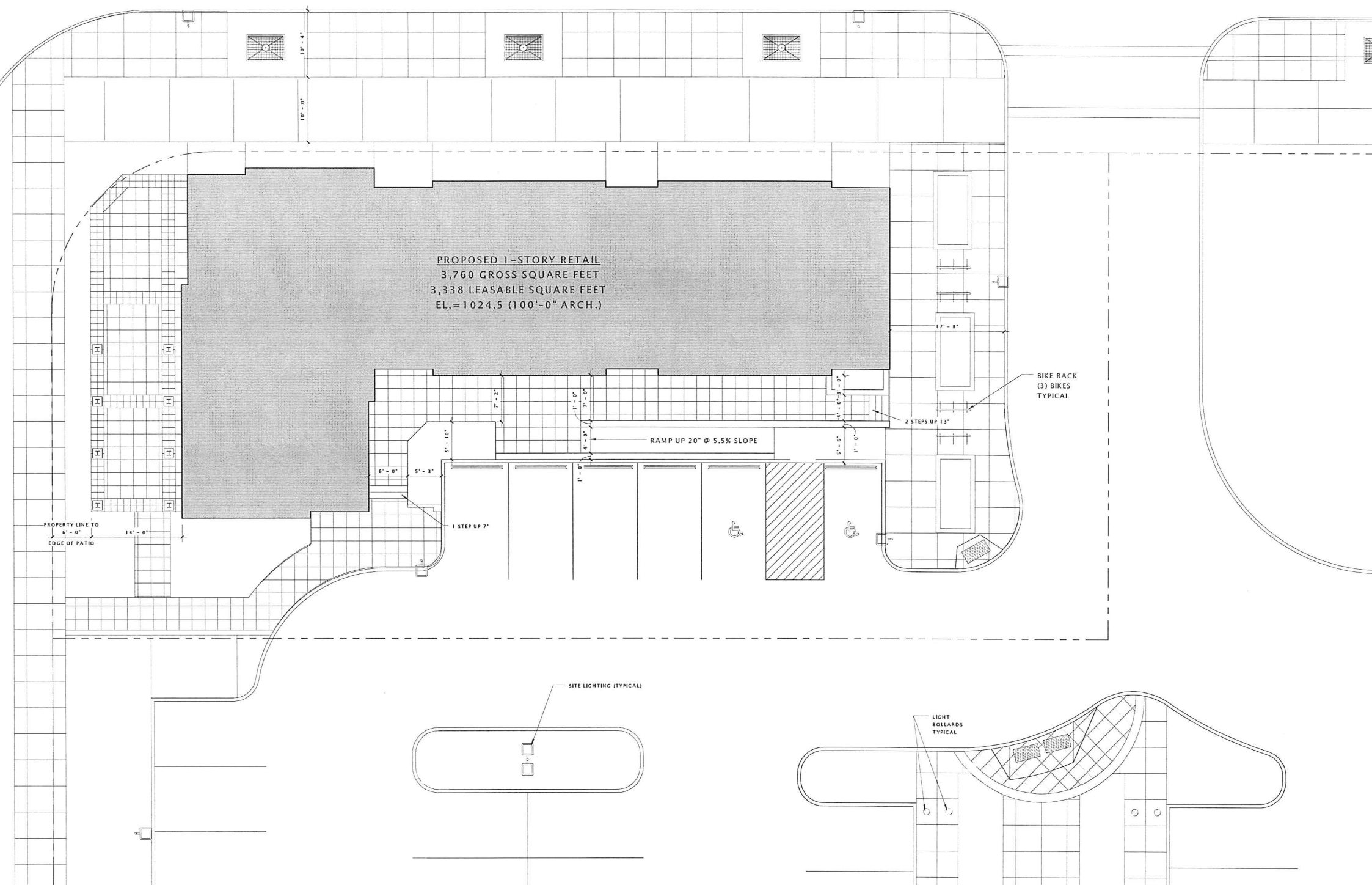
**ARCHITECTURAL SITE
 PLAN**

SHEET NUMBER

ASP-100

COTTAGE GROVE ROAD

GEMINI DRIVE





VERIDIAN
HOMES

VERIDIAN HOMES

GRANDVIEW COMMONS
RETAIL BUILDING 'C3'

PROGRESS DOCUMENTS

These documents reflect progress and intent and may be subject to change, including additional detail. These are not final construction documents and should not be used for final bidding or construction-related purposes.

DATE OF ISSUANCE: SEPTEMBER 14, 2012

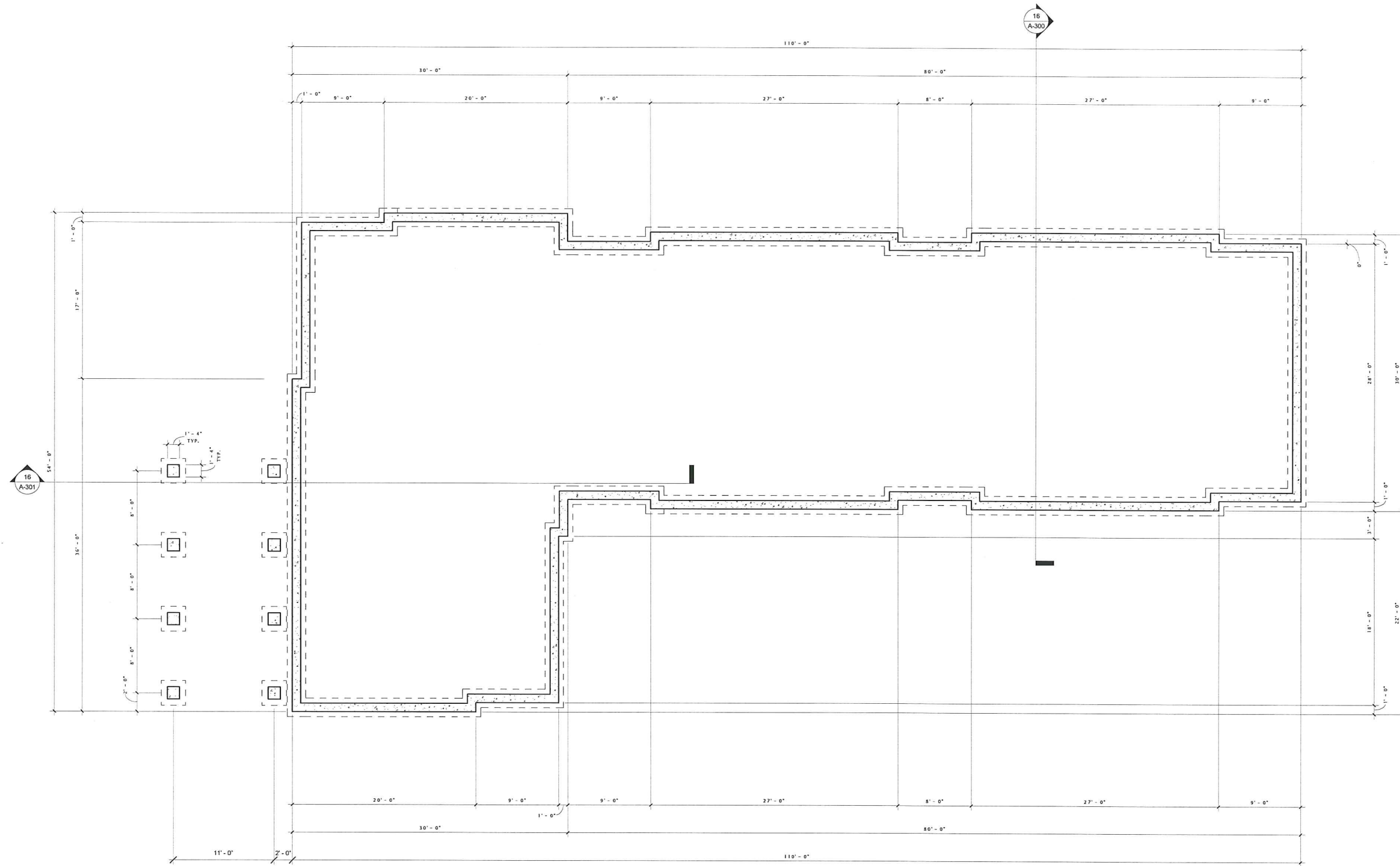
Revision Schedule		
Mark	Description	Date

SHEET TITLE

FOUNDATION PLAN

SHEET NUMBER

A-100





VERIDIAN
HOMES

VERIDIAN HOMES

GRANDVIEW COMMONS
RETAIL BUILDING 'C3'

PROGRESS DOCUMENTS

These documents reflect progress and intent and may be subject to change, including additional detail. These are not final construction documents and should not be used for final bidding or construction-related purposes.

DATE OF ISSUANCE: SEPTEMBER 14, 2012

Revision Schedule		
Mark	Description	Date

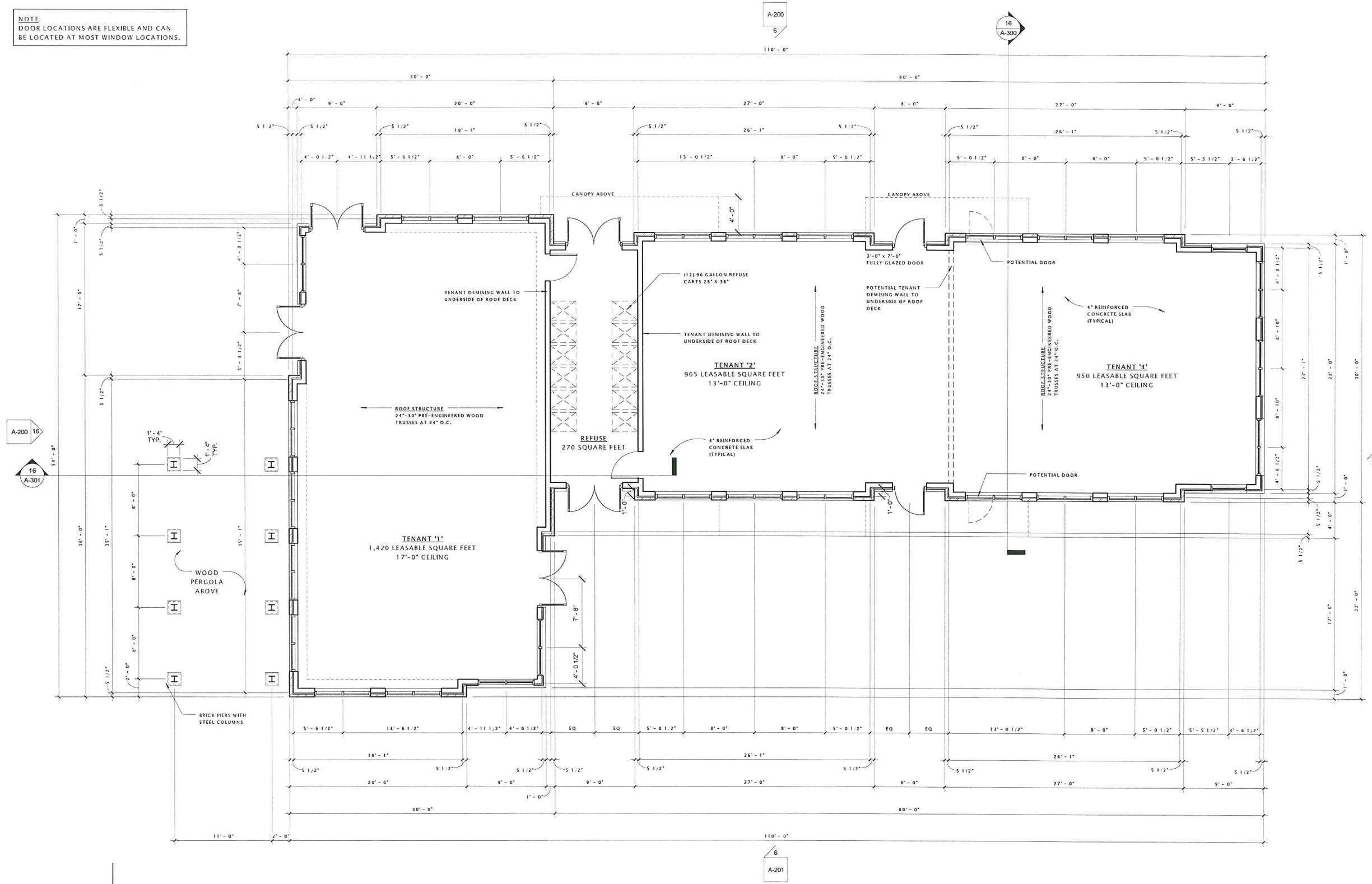
SHEET TITLE

GROUND FLOOR PLAN

SHEET NUMBER

A-101

NOTE:
DOOR LOCATIONS ARE FLEXIBLE AND CAN
BE LOCATED AT MOST WINDOW LOCATIONS.



EXTERIOR MATERIALS SCHEDULE						
MARK	DESCRIPTION	MANUFACTURER	TYPE / STYLE	DIMENSIONS	COLOR	NOTE
1	MASONRY #1	TBD			TBD	
2	MASONRY #2	TBD			TBD	
3	MASONRY #3	TBD			TBD	
4	METAL PANEL	TBD			TBD	
5	PREFINISHED METAL COPING	TBD			TBD	
6	METAL SIGNAGE	TBD			TBD	
7	METAL ENTRY CANOPY	TBD			TBD	
8	COPED STEEL PERGOLA COLUMN	TBD			TBD	
9	WOOD PERGOLA BEAM	TBD			TBD	
10	WOOD PERGOLA RIB	TBD			TBD	
11	ALUMINUM ENTRANCE DOOR(S)	TBD			TBD	

JLA

architects + planners

JOSEPH LEE - ASSOCIATES
 5325 wall street - suite 2700
 madison - wisconsin 53718
 608.241.9500

JLA PROJECT NUMBER: 12-0514-01



VERIDIAN HOMES

GRANDVIEW COMMONS
 RETAIL BUILDING 'C3'

PROGRESS DOCUMENTS

These documents reflect progress and intent and may be subject to change, including additional detail. These are not final construction documents and should not be used for final bidding or construction-related purposes.

DATE OF ISSUANCE: OCTOBER 30, 2012

Revision Schedule

Mark	Description	Date

SHEET TITLE

EXTERIOR ELEVATIONS

SHEET NUMBER

A-200



6 WEST ELEVATION (GEMINI DRIVE)
 3/16" = 1'-0"



16 SOUTH ELEVATION
 (COTTAGE GROVE ROAD)
 3/16" = 1'-0"



VERIDIAN HOMES

GRANDVIEW COMMONS
 RETAIL BUILDING 'C3'

PROGRESS DOCUMENTS

These documents reflect progress and intent and may be subject to change, including additional detail. These are not final construction documents and should not be used for final bidding or construction-related purposes.

DATE OF ISSUANCE OCTOBER 30, 2012

Revision Schedule		
Mark	Description	Date

SHEET TITLE

EXTERIOR ELEVATIONS

SHEET NUMBER

A-201

HIGH TRUSS BEARING
117' - 1 1/8"
TOP OF MASONRY
117' - 0"
LOW TRUSS BEARING
113' - 1 1/8"

GROUND FLOOR
100' - 0"
TOP OF FOOTING
96' - 0"
BOTTOM OF FOOTING
95' - 0"
EAST ELEVATION
(WITH SITE WALLS & PLANTERS)
3/16" = 1'-0"



HIGH TRUSS BEARING
117' - 1 1/8"
TOP OF MASONRY
117' - 0"
LOW TRUSS BEARING
113' - 1 1/8"

GROUND FLOOR
100' - 0"
TOP OF FOOTING
96' - 0"
BOTTOM OF FOOTING
95' - 0"
EAST ELEVATION
(BUILDING ONLY)
3/16" = 1'-0"

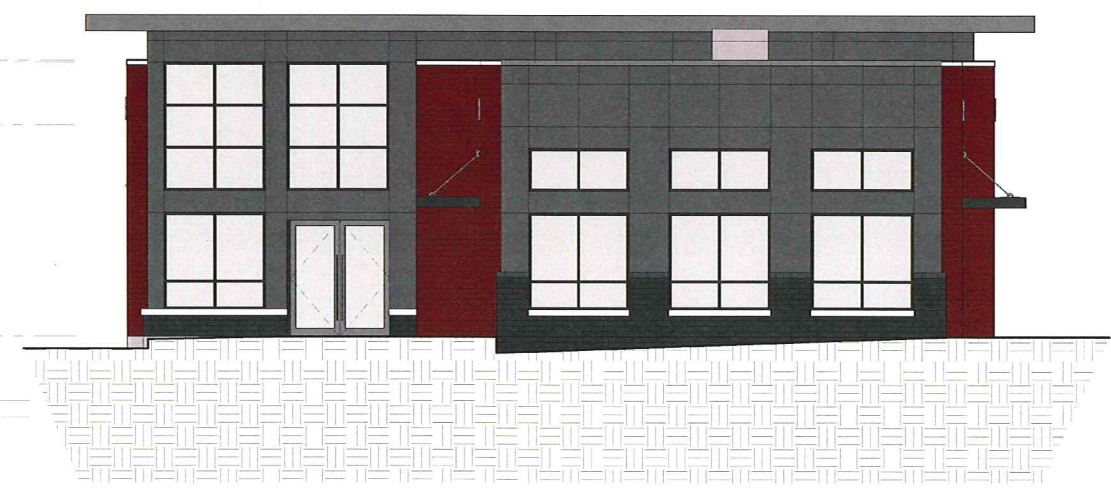


HIGH TRUSS BEARING
117' - 1 1/8"
TOP OF MASONRY
117' - 0"
LOW TRUSS BEARING
113' - 1 1/8"

GROUND FLOOR
100' - 0"
TOP OF FOOTING
96' - 0"
BOTTOM OF FOOTING
95' - 0"

NORTH ELEVATION
(BUILDING ONLY)
3/16" = 1'-0"

NORTH ELEVATION
(WITH SITE WALLS & PLANTERS)
3/16" = 1'-0"





VERIDIAN
HOMES

VERIDIAN HOMES

GRANDVIEW COMMONS
RETAIL BUILDING 'C3'

PROGRESS DOCUMENTS

These documents reflect progress and intent and may be subject to change, including additional detail. These are not final construction documents and should not be used for final bidding or construction-related purposes.

DATE OF ISSUANCE SEPTEMBER 14, 2012

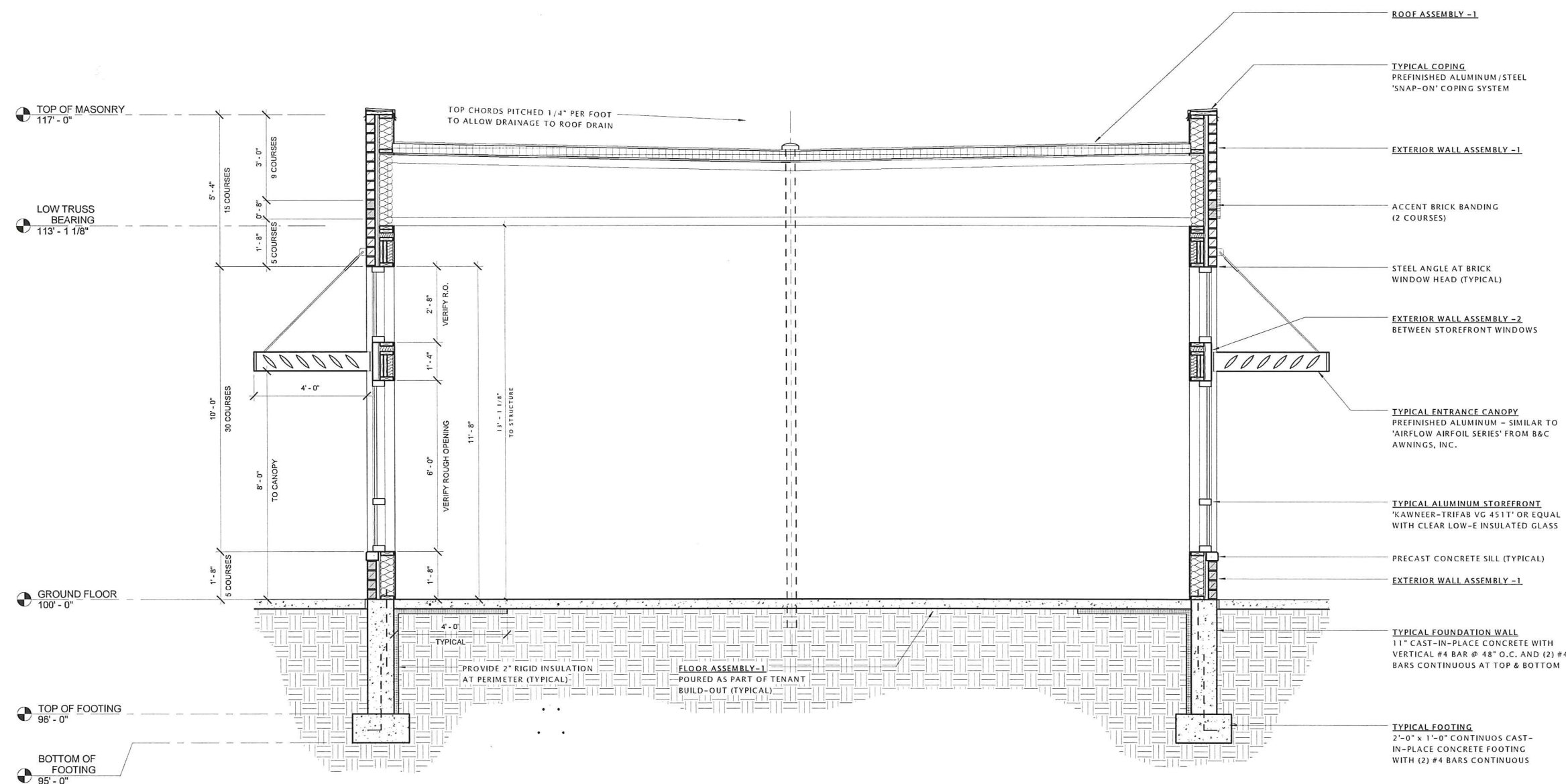
Revision Schedule		
Mark	Description	Date

SHEET TITLE

TYPICAL BUILDING SECTION

SHEET NUMBER

A-300





VERIDIAN HOMES

GRANDVIEW COMMONS
RETAIL BUILDING 'C3'

PROGRESS DOCUMENTS

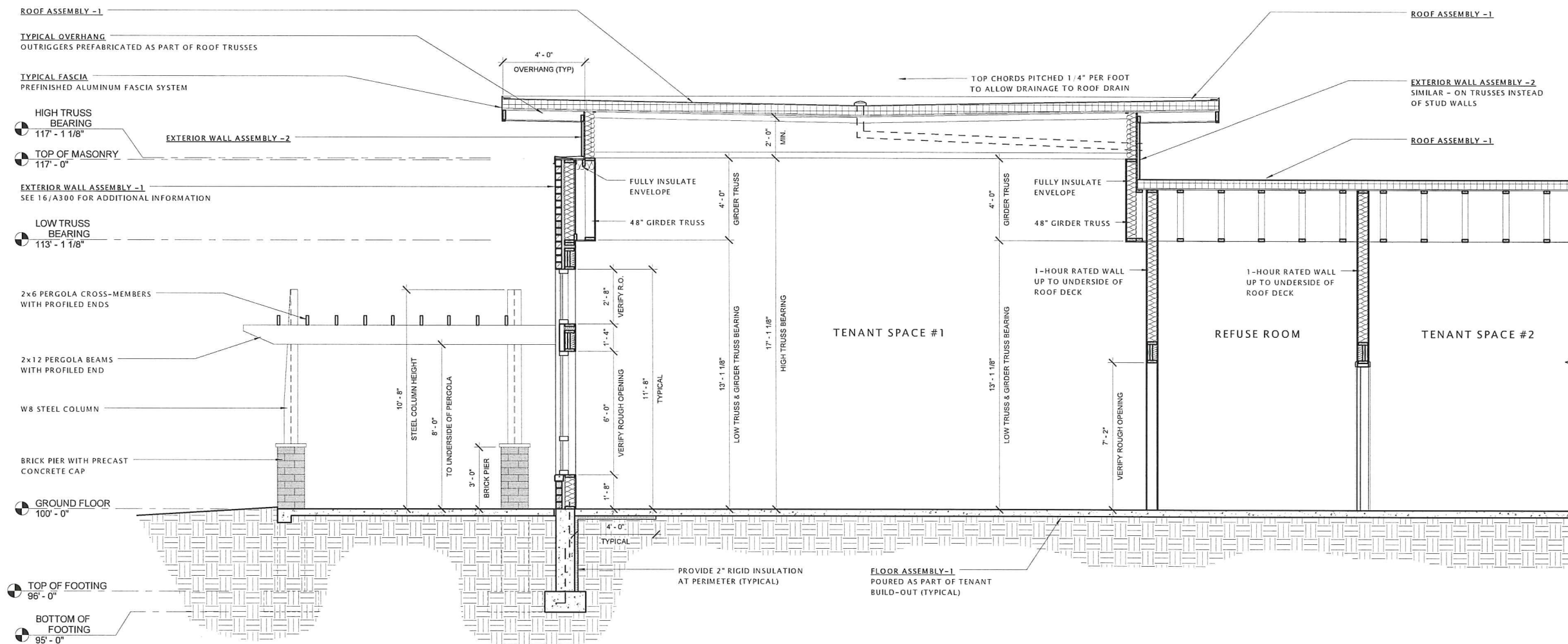
These documents reflect progress and intent and may be subject to change, including additional detail. These are not final construction documents and should not be used for final bidding or construction-related purposes.

DATE OF ISSUANCE SEPTEMBER 14, 2012

Revision Schedule		
Mark	Description	Date

SHEET TITLE
BUILDING SECTION

SHEET NUMBER
A-301



PLANTING NOTES

GENERAL

Digging
Contact local Digger's Hotline prior to any digging.

Topsoil
Topsoil shall be classified as a sandy loam soil to silty loam. No organic topsoil from peaty sources will be accepted. Topsoil imported from a local supplier shall be stripped and stockpiled for more than 12 months to be relatively free of viable weed seeds. Topsoil shall be sifted and/or screened to be free of stones and clay lumps, plants or other extraneous materials.

Fine Grading
Inspect site and verify that adequate topsoil has been provided for all seed and planting beds. Remove all trash and stone exceeding 2 inches in diameter from area to a depth of 2 inches prior to bed preparation and planting. Fine grade to within 1/2" of finished grade. All lawn areas to be sloped evenly to sheet drain and approximate contours on grading plan.

PLANTING

Plant starter mix
A 2:1 ratio mix of two parts peat moss and one part manure.

Trees
Pocket plant and back fill pits with a mix of 10% plant starter mix, and 90% existing soil. Tree holes to be at least 2 times the spread diameter of the root ball. Use shovel to rough up sides of exposed walls. Set depth of root ball to be same as grown in nursery or slightly higher if planting in clay soil.

Shrubs
Pocket plant and back fill pits with a mix of 10% plant starter mix, and 90% existing soil. Set depth of root ball to be same as grown in nursery or slightly higher if planting in clay soil.

Perennials
Condition topsoil in perennial planting beds by adding 3" plant starter mix. Add bone meal and milorganite, each at the rate of 1-2 lbs. per 100 S.F. Add granular sulfur at the rate of 3-4 lbs. per 100 S.F. Rototill to blend and re-grade as necessary. Set plant depth to be same as grown in nursery. Water-in well.

MULCHING
Install a 3" layer of shredded bark throughout tree, shrub, and perennial planting beds. For trees in lawn, install a 4-5' diameter circle of mulch around each tree. Do not allow mulch to touch plant stems. Contractor shall provide shredded bark mulch from disease-free hardwood trees. Provide generally flat bark, maximum of 1" wide and 4" long, graded down to sawdust, and relatively free of deleterious matter.

BED EDGING
All planting beds adjacent to turf areas shall be edged with poly-vinyl edging. Install per manufacturer's instructions.

PLANTING REQUIREMENTS

Site has less than 20 parking stalls, and those stalls shown are included in the Copps Grocery store calculation.

PLANTING SCHEDULE

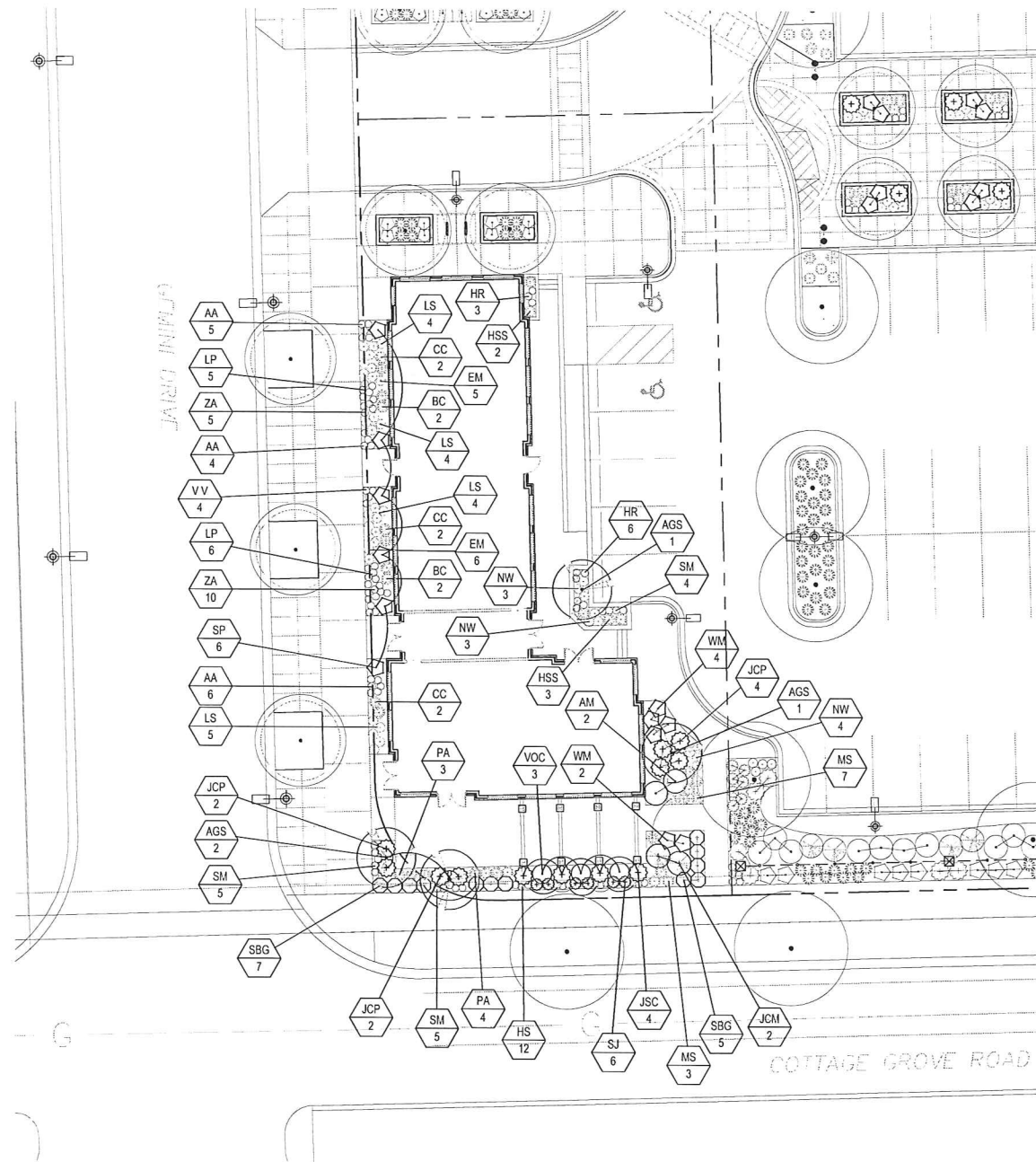
SYM	BOTANICAL NAME	COMMON NAME	QTY.	SIZE	COND.	SPACING	PT VALUE	POINTS
Ornamental Trees								
AGS	Ambelochier x g 'Autumn Brilliance'	Autumn Brilliance Serviceberry	4	8' Sp. Stem	BB	As shown	15	60
Deciduous Shrubs								
AM	Aronia melanocarpa var. elata 'Tropicana Beauty'	Tropicana Beauty Black Chokeberry	2	2 Gal.	Container	48" o.c.	2	4
SP	Salix purpurea nana	Dwarf Arctic Willow	6	5 Gal.	Container	48" o.c.	2	12
SBG	Spiraea x bumalda 'Gold Charm'	Gold Charm Spirea	12	2 Gal.	Container	36" o.c.	2	24
SJ	Spiraea japonica 'Magic Carpet'	Magic Carpet Spirea	6	2 Gal.	Container	30" o.c.	2	12
VM	Weigela 'Finest'	Finest Weigela	6	2 Gal.	Container	42" o.c.	2	12
VOC	Viburnum cplius 'Compactum'	Compact European Viburnum	3	18" HT.	BB	48" o.c.	2	6
Evergreen Shrubs								
JCM	Juniperus chinensis 'Mountbatten'	Mountbatten Juniper	2	5' HT.	BS	60" o.c.	3	6
JSC	Juniperus sabbina 'Calgary Carpet'	Calgary Carpet Juniper	4	5 Gal.	Container	60" o.c.	3	12
Perennials								
AA	Aster azureus	Sky Blue Aster	15	1 Gal.	Container	12" o.c.		
BC	Bouteloua curtipendula	Sideoak Gramma	4	3"	Container	12" o.c.		
CC	Calamagrostis canadensis	Bluejoint Grass	5	1 Gal.	Container	30" o.c.		
EM	Eupatorium maculatum 'Lilac Joe'	Lilac Joe Yucca	11	1 Gal.	Container	24" o.c.		
HSS	Hieracium sempervirens 'Sapphire'	Sapphire Blue Oat Grass	5	1 Gal.	Container	24" o.c.		
HS	Hemerocallis 'Stella d'Oro'	Low Yellow-Gold Daylily	12	1 Gal.	Container	18" o.c.		
HR	Hemerocallis 'Rosy Returns'	Rosy Returns Daylily	9	1 Gal.	Container	18" o.c.		
LS	Lobelia siphilitica	Great Blue Lobelia	17	1 Gal.	Container	24" o.c.		
LP	Lupinus perennis	Lupine	11	1 Gal.	Container	18" o.c.		
MHS	Miscanthus sinensis 'Red Flame'	Red Flame Miscanthus	10	1 Gal.	Container	30" o.c.		
NW	Napels x 'Walker's Low'	Walker's Low Catmint	10	1 Gal.	Container	24" o.c.		
PA	Penstemon atopocroceus 'Hamlet'	Hamlet Dwarf Fountain Grass	7	1 Gal.	Container	24" o.c.		
SM	Salvia x 'May Night'	May Night Salvia	14	1 Gal.	Container	18" o.c.		
VV	Veronicastrum virginicum	Culver's Root	4	1 Gal.	Container	18" o.c.		
ZA	Zizia aurea	Golden Alexanders	15	1 Gal.	Container	18" o.c.		
							Total Points	148

MAINTENANCE

Maintenance Period – Contractor shall provide regular maintenance until a date of 60 days after completion of planting. Maintenance shall begin when planting is started for ongoing planting areas. Maintenance operations shall include watering, weeding, and mowing. Contractor shall provide temporary irrigation equipment if needed to provide a minimum of 1" of water per week throughout the maintenance period for all planting areas.

PLANT GUARANTEE

The landscape contractor shall guarantee to replace once, without charge, any woody plant material (deciduous or evergreen trees & shrubs) that dies within one year of installation, providing the owner gives normal plant care (regular watering). The owner must report plant losses within the guarantee period.



Schaefer Land Design
405 N. Page Street
Stoughton, Wisconsin 53589
(608) 225-7946

'C3' RETAIL BUILDING
GRANDVIEW COMMONS
MADISON, WISCONSIN

REVISIONS

SCALE: 1" = 16'-0"
DATE: 10/29/12
DRAWN BY: JDS
GVC C3 RETAIL
L1.0