

City of Madison PFAS Update

SUSTAINABLE MADISON COMMITTEE

APRIL 27, 2026

What are PFAS¹?

A group of human-made chemicals that enter our environment from:



Non-stick cookware



Fast food packaging



Fire-fighting Foam containing PFAS



Stain and water resistant carpeting and fabrics



Industrial areas that use, dispose of, or manufacture PFAS

Why Are They Important to Me?



PFAS build up over time in humans, fish, and wildlife. They are linked to harmful health effects in people, particularly pregnant people and infants.

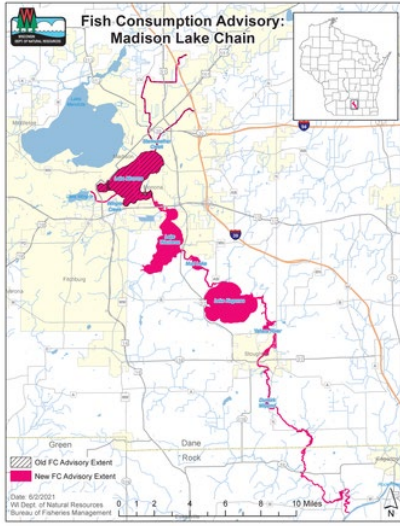


PFAS have been found in Madison's surface water and groundwater.



PFAS were found in fish tissue in Starkweather Creek, Lake Monona, and downstream lakes.

While PFAS were found in drinking water wells in Madison, they are **below** the federal standards and state health department recommended levels.



PFAS in Madison

- PFAS found in surface water – Starkweather Creek and chain of lakes
- PFAS found (and now being treated) in an area of drinking water
- A known source of contamination is firefighting foam that was used and tested at Truax Field and Airport, with work underway to address it

Fish advisories for WISCONSIN INLAND (NON-GREAT) LAKES
 Eating fish with chemicals like mercury, PCBs, and PFAS can affect your health. Follow this advice for Wisconsin (below) and Dane County (other side) to choose fish with less chemicals.

Advertencias de pescado para lagos interiores (no grandes) en Wisconsin. Comer pescado con químicos puede afectar su salud. Sigá estos consejos para Wisconsin (abajo) y el condado de Dane (otro lado) para elegir pescados con menos químicos.

Ntawv qhia cov ntes nyob rau Wisconsin cov pas dej (tsis yog-pas dej) Great. Nwj cov ntes muaj tshuaj khes mis xws li mercury, PCBs, thiab PFAS yuav ua mob tau rau koj lub cev. Ua raws cov ntawv qhia nov rau Wisconsin (hauv qab no) thiab Dane County (nyob sab nraud) los xav cov tses muaj khes mis tswag.

People who are able to get pregnant and children under 15	People who are not able to get pregnant
<p>UP TO 1 MEAL A WEEK Hasta 1 comida por semana Naj li 1 pluvag la lim siam AND / y / thiab</p> <p>UP TO 1 MEAL A MONTH Hasta 1 comida al mes Naj li 1 pluvag la his</p> <p>DO NOT EAT No comer Tis thab noj</p>	<p>UNRESTRICTED Ilimitado Tis ho no AND / y / thiab</p> <p>UP TO 1 MEAL A WEEK Hasta 1 comida por semana Naj li 1 pluvag la lim siam</p> <p>UP TO 1 MEAL A MONTH Hasta 1 comida al mes Naj li 1 pluvag la his</p>
<p>Bluegill, crappies, yellow perch, sunfish, bullheads, inland trout</p> <p>Walleye, pike, bass, catfish, all other species not listed here</p> <p>Musky</p>	<p>Bluegill, crappies, yellow perch, sunfish, bullheads, inland trout</p> <p>Walleye, pike, bass, catfish, all other species not listed here</p> <p>Musky</p>

For more information: bit.ly/eye-en
 Para más información: bit.ly/eye-es
 Yog xav paub ntawv: bit.ly/eye-hm

Public Health MADISON & DANE COUNTY
 Healthy people. Healthy places.

Progress to Address Known Pollution Sources

- 115th SW / Air National Guard activities:
 - Switched to PFAS free firefighting foam
 - Treating and removing soil from construction
 - Working through federal remediation steps (CERCLA). Recently completed a Remedial Investigation.
- Dane County Regional Airport activities:
 - Lined stormwater pipes to try to slow the groundwater from entering the creek
 - Piloting innovative microbe solution to break down PFAS on site, with positive early results
- New WI laws fund provide funding for municipal grants for public water, private wells, and some protections for “innocent landowners”

Questions?

Christie Baumel, cbaumel@cityofmadison.com

City website: www.cityofmadison.com/pfas