

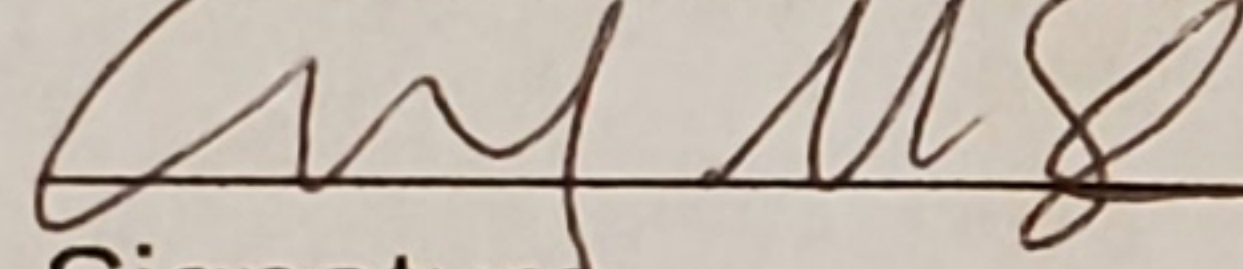
July 11, 2020

To whom it may concern at the City of Madison:

I have granted Parthenon Gyros permission to expand their sidewalk cafe into the space in front of Madison Modern Market.

EMMA STEPIEN

Madison Modern Market Representative



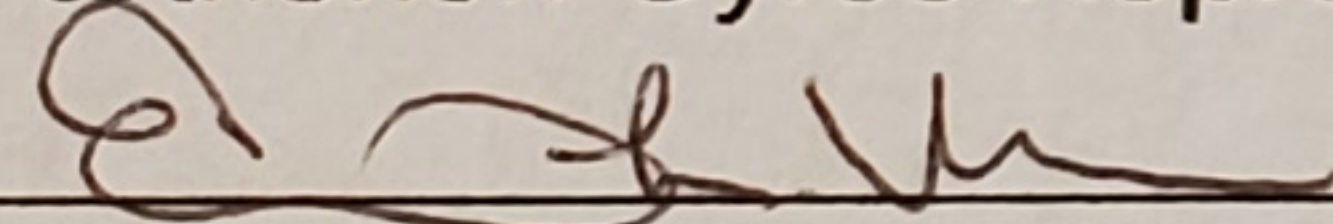
Signature

MANAGER

Title

Erin Vranas

Parthenon Gyros Representative



Signature

Owner

Title



Approved: Streatery Cafe Expansion - Parthenon Gyros, ★

7-16-20 Legal/Licenses



Melton-White, E... 2 days ago

to me, licensing, Verveer, Bl... ▾



Your request to expand your sidewalk café for **Parthenon Gyros, 316 State St., Madison, WI 53703** has been approved on **7/16/20** by the Street Vending Office. You are able to begin setting up your café within the approved expansion area and serving food.

Before you can serve alcohol in the expanded area, you will need to submit a [Temporary Premises Extension Permit application](#) to the [Clerk's Office](#). This email will serve as notification that your expansion is approved.

Once this application is submitted and approved by the Clerk's Office, you will be able to begin service into the expanded patio area on a provisional approval and forward to the Alcohol License Review Committee for final approval recommendation. See Temporary Premises Extension permit application for insurance requirements and details.

Under no circumstances is this program meant to promote gathering or social spaces, and are only to allow food & beverage patrons to be seated in accordance with physical distancing requirements to increase capacity. This program and approvals can be changed or additional requirements can be placed at any time.

Public Health Madison-Dane County (PHMDC)

Resources and Guidelines:

- COVID-19 Restaurant Toolkit: <https://publichealthmdc.com/coronavirus/forward-dane/requirements#toolkit>
- Sign-up for the Public Health Madison-Dane County newsletter. This is the best way to keep up to date on Public Health information you need to know to operate a safe and healthy restaurant: <https://bit.ly/2XWJJ2N>

We will be flexible as we work with you and your staff but we ask that you:

- Follow all [Public Health orders](#)
- Maintain a clear 6' pedestrian path at all times
- Keep chairs, tables and umbrellas within the enclosures at all times
- Place tables and chairs according to the current Public Health orders (6' distance for the seating area is measured from back of chair to back of chair).
- Be mindful of your neighbor café and that the same distancing applies between seating at adjacent cafes.
- Ensure customers are not moving tables together
- Clean café furniture and enclosures frequently and according to Public Health guidance
- Customers are to be seated when consuming food and/or drinks
- A covered garbage can is available at all times
- You must still bring in your furniture and enclosures nightly
- If you are in the Mall/Concourse and you set up your café before 9:30a, you must clean the area before you place your café out.

Please contact our office if you have any additional questions or need assistance. The Streatery Restaurant Recovery Program ends on October 25, 2020, or when restaurants are able to operate at full indoor capacity, whichever comes first. Feedback on this program is welcome. Best of luck as you reopen.

Eric Melton-White

Street Vending Monitor

Economic Development Division

215 Martin Luther King, Jr. Blvd, 3th Floor

P.O. Box 2983

Madison, Wisconsin 53701-2983

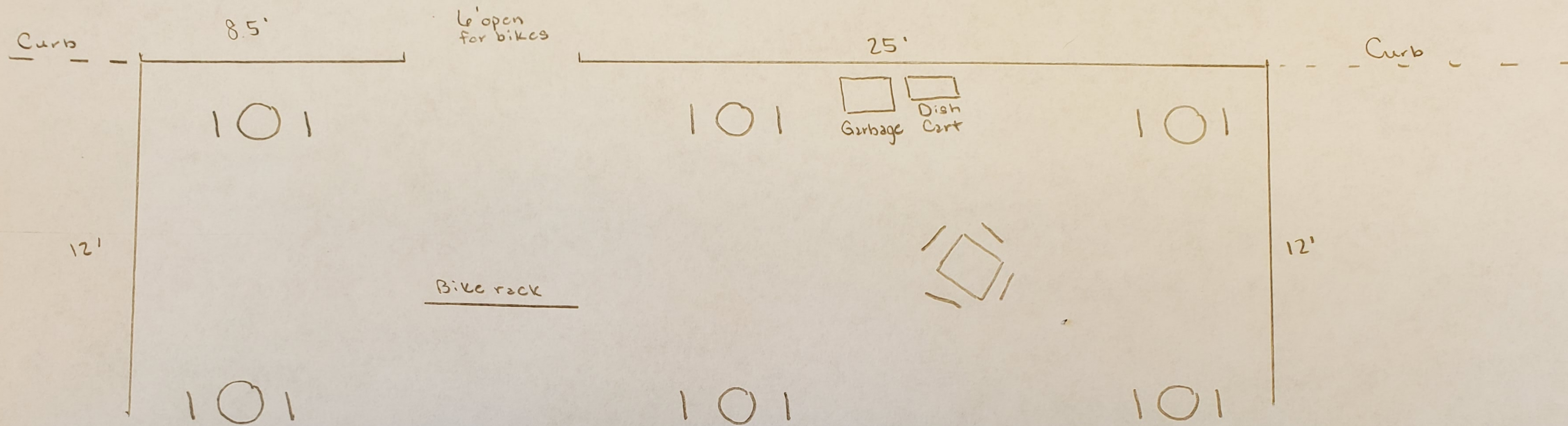
Tel (608) 261-9149 ● Fax (608) 261-6126

emelton-white@cityofmadison.com

www.cityofmadison.com/business/streetvending



State Street



Madison
Modern
Market

Has granted PG permission
to expand sidewalk cafe
in front of store

24' Building Facade

Parthenon Gyros
Streetery Plan: Friday nights,
Saturdays,
Sundays

- Table
- ◇ Table
- Chair
- Fence
- Scale 1cm = 2'