

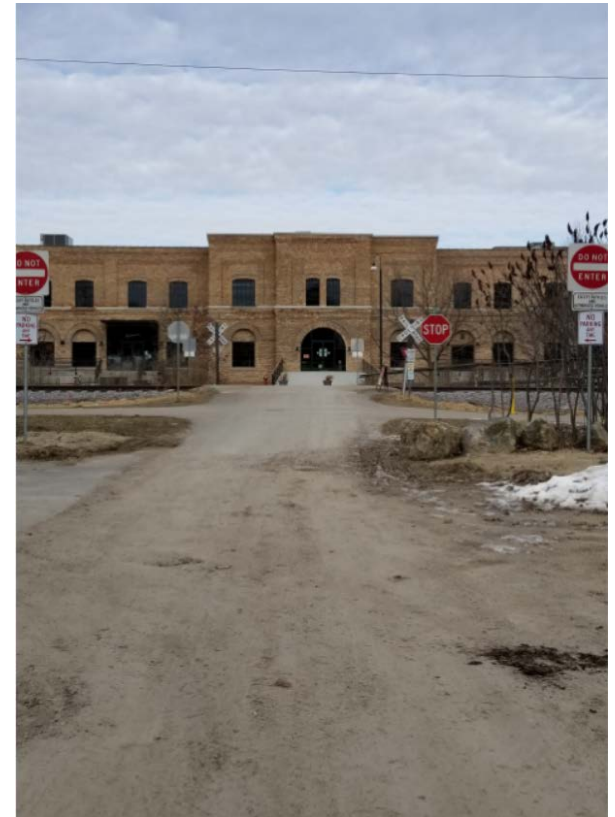


TRANSPORTATION COMMISSION MEETING

Sugar Ave Gates
January 8th, 2020

Purpose

- Seeking approval for gate installation
- Gates initially not on site plan
- Asked to add gates to protect bicyclists and pedestrians
- Hearing dissent from Garver Feed Mill
- Opportunity for public input

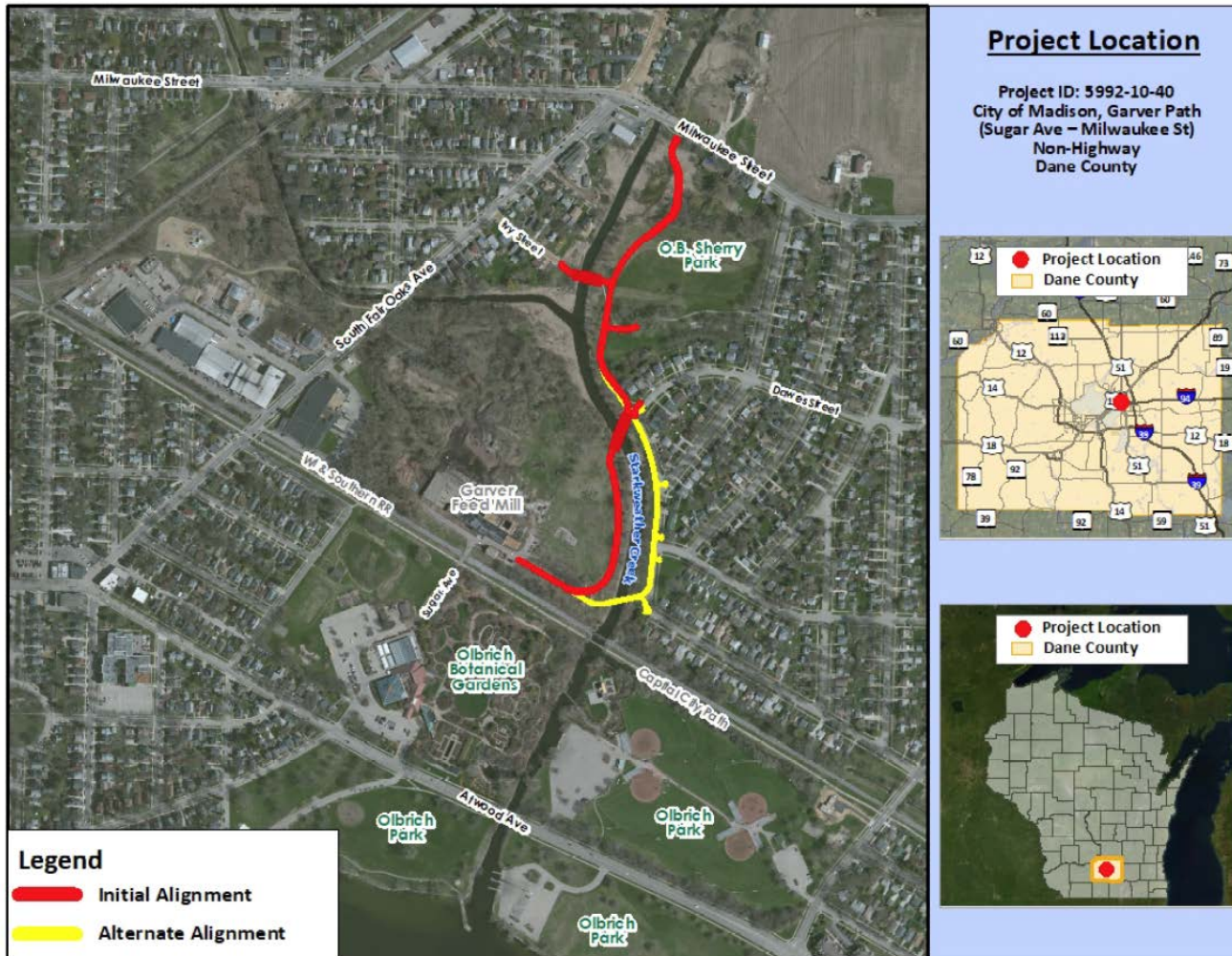


Issue

- Olbrich staff need to access building north of railroad
- Private vehicles driving over bike path and railroad tracks
- Do Not Enter signs installed but are ineffective



Bike Connections



Swing Gate Lockable Bollard



Model B35-GATE-42X55
(Two Bollards Shown)



Reflective signs will be installed on the gates to ensure proper visibility in the dark

Proposed gate locations

Garver Feed Mill

Sugar Ave

SHEET NO.
1 of 1

Gate Installation Plan
CITY OF MADISON



Railroad

Note: Gates will be installed with a 58 inch space between them to allow bicyclists and Olbrich vehicles through

Capital City Trail

Sugar Ave

Olbrich Botanical Gardens

13'

13'

ORIGINATOR: CITY OF MADISON, TRAFFIC ENG. DIV.
REV. DATE:
PLOT NAME:
PLOT SCALE:

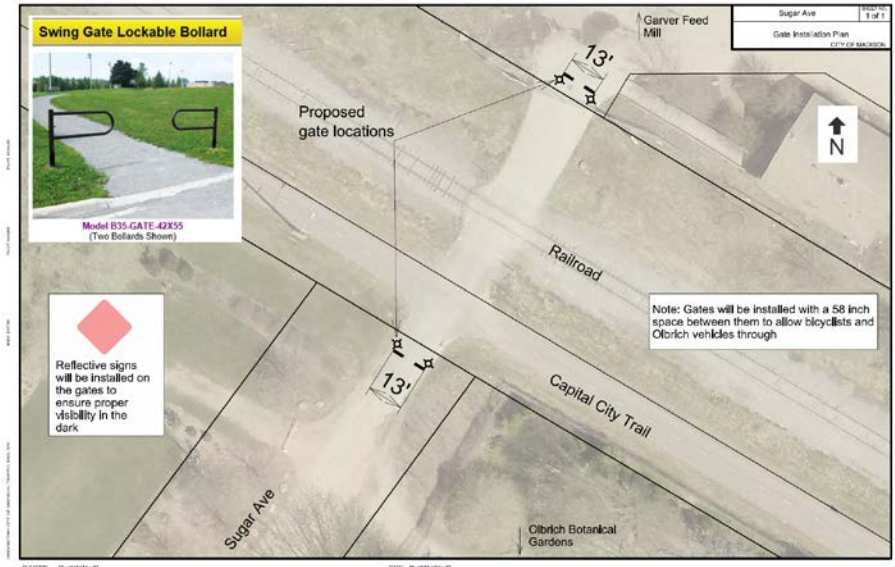
FILE NAME: 55...designdraw...55

DATE: 55...plottingdate...55



Addressing Garver Feed Mill Concerns

- Safety/Operations
 - Second pair of gates on the north side of the tracks
- Emergency Vehicle Access
 - MFD on board so long as Knox Box is included
- Aesthetic
 - Gates not shown on site plan to Landmarks Commission
- Businesses
 - Concerns that would be more difficult to find overflow parking



Questions?

