

IFF MADISON - BANYAN

INTERNATIONAL FLAVORS & FRAGRANCES INC.

UDC REVIEW

3326 AGRICULTURE DR | MADISON | WI 53716

PROJECT LOCATION



SHEET INDEX

SHEET NUMBER	SHEET NAME	REVISED	DATE/ISSUE
UDC00	UDC - COVER SHEET AND LETTER OF INTENT		
UDC01	UDC - SITE PLAN		
UDC02	UDC - SITE PLAN		
UDC03	UDC - SITE PLAN		
UDC04	UDC - SITE PLAN		
UDC05	UDC - LANDSCAPE DETAILS		
UDC06	UDC - LANDSCAPE DETAILS		
UDC07	UDC - LANDSCAPE DETAILS		
UDC08	UDC - LANDSCAPE DETAILS		
UDC09	UDC - LANDSCAPE DETAILS		
UDC10	UDC - LANDSCAPE DETAILS		
UDC11	UDC - LANDSCAPE DETAILS		
UDC12	UDC - LANDSCAPE DETAILS		
UDC13	UDC - LANDSCAPE DETAILS		
UDC14	UDC - LANDSCAPE DETAILS		
UDC15	UDC - LANDSCAPE DETAILS		
UDC16	UDC - LANDSCAPE DETAILS		
UDC17	UDC - LANDSCAPE DETAILS		
UDC18	UDC - LANDSCAPE DETAILS		
UDC19	UDC - LANDSCAPE DETAILS		
UDC20	UDC - LANDSCAPE DETAILS		

**PRELIMINARY
- NOT FOR
CONSTRUCTION**

REV.	DATE	DESCRIPTION	BY	DATE	APP.

REVISIONS

©2017 INTERNATIONAL FLAVORS & FRAGRANCES INC.
 THE INFORMATION AND DATA ON THESE DRAWINGS ARE NOT TO BE USED FOR THE
 DESIGN OR CONSTRUCTION OF ANY STRUCTURE WITHOUT THE WRITTEN APPROVAL OF INTERNATIONAL
 FLAVORS & FRAGRANCES INC. ALL RIGHTS RESERVED. ANY REUSE OR MODIFICATION OF THESE
 DRAWINGS WITHOUT WRITTEN PERMISSION SHALL BEAT OF PENALTY.

INTERNATIONAL FLAVORS & FRAGRANCES INC.
 International Flavors and Fragrances Inc.
 200 New Canaan Parkway
 New Canaan, CT 06840
 USA

INDIAN RIVER COUNTY
SHIVBHARTHY
 3333 US Highway 1, Suite 100 | Cape Coral, FL 33914
 33914-4237 | Tel: 239-594-4321 | www.shivbharty.com
 June 1, 2018 | 10:08 AM | 1/10/2018

TITLE: UDC - COVER SHEET AND LETTER OF INTENT
 UDC REVIEW
 IFF MADISON - BANYAN



DRAWN	AUTH.	CHECKED	CHECKED	APPROVED	DATE
REV					
E				UDC-00	05/19/22

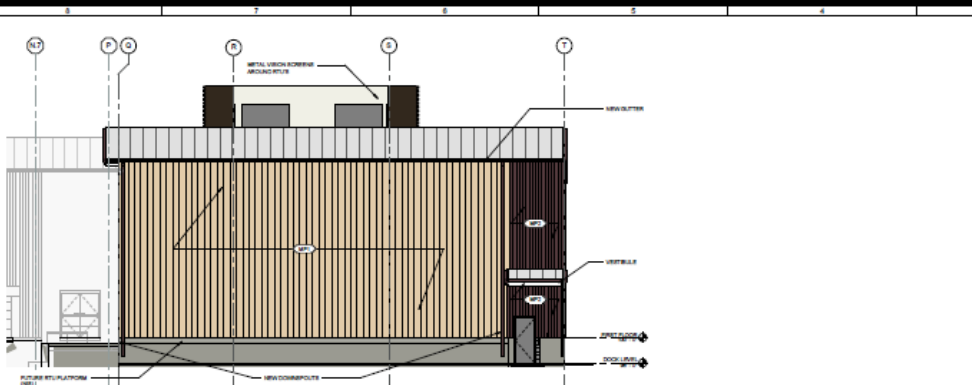


① EXISTING VIEW - AGRICULTURE DRIVE
NOT TO SCALE

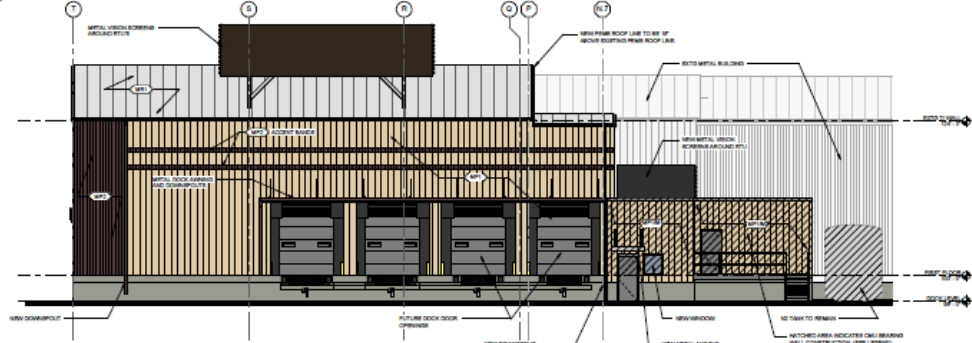


② NEW VIEW - AGRICULTURE DRIVE
NOT TO SCALE

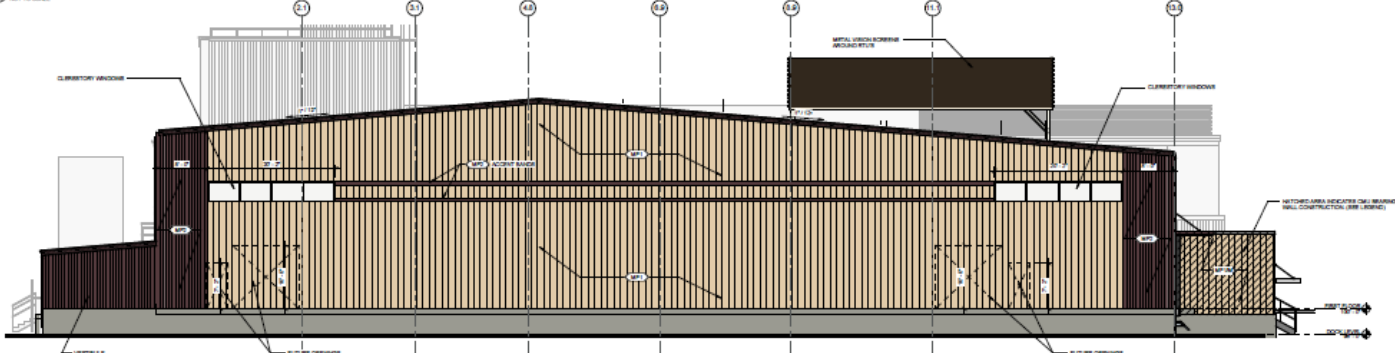
G			
F			
E			
D		PRELIMINARY - NOT FOR CONSTRUCTION	
C			
REV	DATE	DESCRIPTION	BY CHG/APP
REVISIONS			
<small>ONLY INTERNATIONAL PRACTICES & STANDARDS ARE TO BE APPLIED FOR THE PURPOSE OF THE DRAWINGS. ALL OTHERS SHALL BE IN ACCORDANCE WITH THE LOCAL CODES AND REGULATIONS OF THE JURISDICTION. PARTICULARLY, THE LOCAL CODES AND REGULATIONS OF THE JURISDICTION SHALL APPLY TO THE DESIGN OF THE WORK. THE DESIGNER SHALL BE RESPONSIBLE FOR OBTAINING ALL NECESSARY PERMITS AND APPROVALS FROM THE APPLICABLE AGENCIES. THE DESIGNER SHALL BE RESPONSIBLE FOR OBTAINING ALL NECESSARY PERMITS AND APPROVALS FROM THE APPLICABLE AGENCIES. THE DESIGNER SHALL BE RESPONSIBLE FOR OBTAINING ALL NECESSARY PERMITS AND APPROVALS FROM THE APPLICABLE AGENCIES.</small>			
 IFF <small>INTERNATIONAL FLUOROPOLYMER PRODUCTS CORPORATION 201 New Canaan Parkway New Canaan, CT 06840</small>			
 SHVEPATERY <small>INTERNATIONAL FLUOROPOLYMER PRODUCTS CORPORATION 201 New Canaan Parkway New Canaan, CT 06840</small>			
TITLE EXTERIOR 3D VIEWS UDC REVIEW IFF MADISON - BANYAN			
DESIGN	AUTHOR	CHECKED	DATE
APPV		UDC-57C	05/16/23



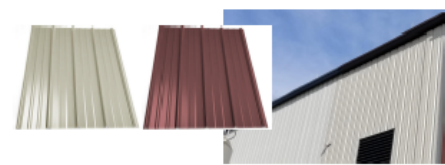
② PROBIOTIC STAGING WEST ELEVATION
NOT TO SCALE



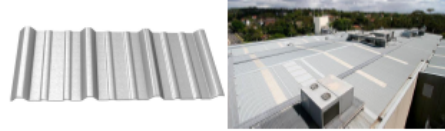
③ PROBIOTIC STAGING EAST ELEVATION
NOT TO SCALE



④ PROBIOTIC STAGING SOUTH ELEVATION
NOT TO SCALE



MP1 + MP2 - METAL WALL PANELS



MR1 - METAL ROOF 1




MECHANICAL EQUIPMENT SCREEN PANEL

EXTERIOR WALL + ROOF ASSEMBLY LEGEND

- MP1 COLOR 1 PRIME ALUMINUM WALL SYSTEM
EXTERIOR METAL PANEL
RADIANT BARRIER INSULATION + R-9
MINERAL WOOL INSULATION
EXTERIOR METAL PANEL COVERED SHEET
- MP2 COLOR 2
PRIME ALUMINUM METAL PANEL, DARK METALRY SHEET
METAL PANEL EXTENDING TO MATCH PANEL MP1
1" OF RADIANT BARRIER INSULATION
EXTERIOR METALRY SHEET
2" OF RADIANT BARRIER INSULATION
CONTINUOUS INSULATION
RADIANT BARRIER INSULATION
- MR1
PRIME ALUMINUM ROOF SYSTEM
EXTERIOR METAL PANEL
ROOF JOINT, PROTECTIVE BARRIER SHEET
INSULATION SHEET
CONTINUOUS INSULATION
RADIANT BARRIER INSULATION

PRELIMINARY
- NOT FOR
CONSTRUCTION

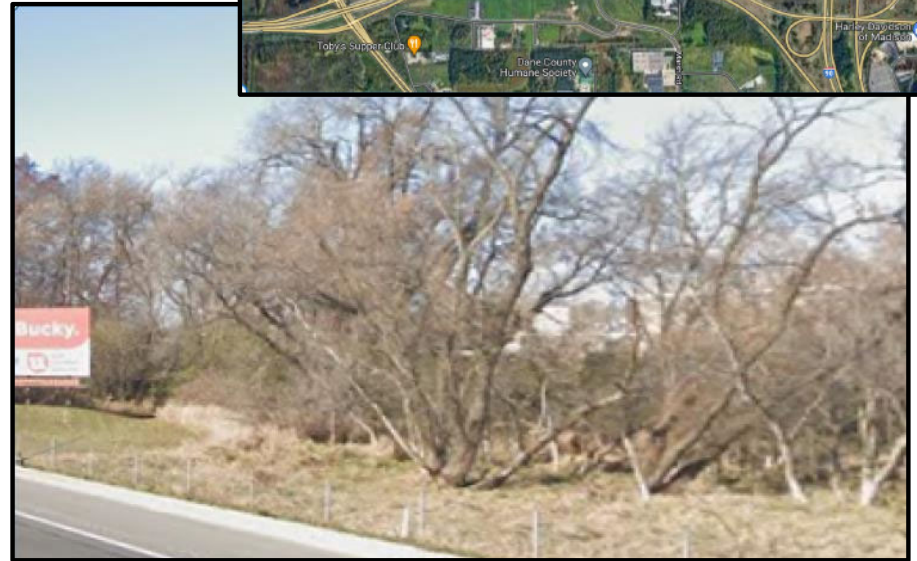
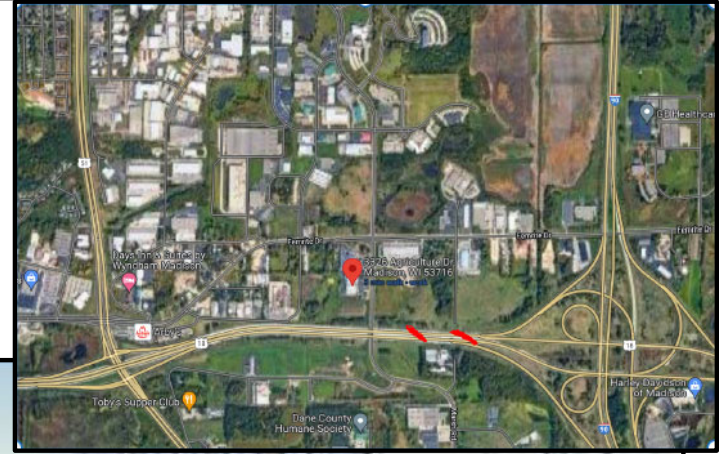
REV	DATE	DESCRIPTION	BY	CHECK	APPR
REVISIONS					
COPY OF REVISIONS, PLANS & TRANSMISSIONS, THE ORIGINAL OR A COPY THEREOF, SHOULD BE KEPT WITH THE ORIGINAL CONTRACT AND ALL REVISIONS THERE TO BE KEPT WITH THE ORIGINAL CONTRACT AND ALL REVISIONS THERE TO BE KEPT WITH THE ORIGINAL CONTRACT.					
					
SHIVEPARTNERS 1111 GLENN DR. SUITE 100 330 TRIUMPH BLVD. SUITE 1000 DENVER, CO 80202					
UDC - ELEVATIONS COLOR & MATERIAL PHOTOS					
UDC REVIEW					
BY: MACKSON - BANYAN					
DESIGN	Author	Checked	Approved	Approved	DATE
001					05/19/20
FILE: UDC-07B			PROJECT # 1230140		



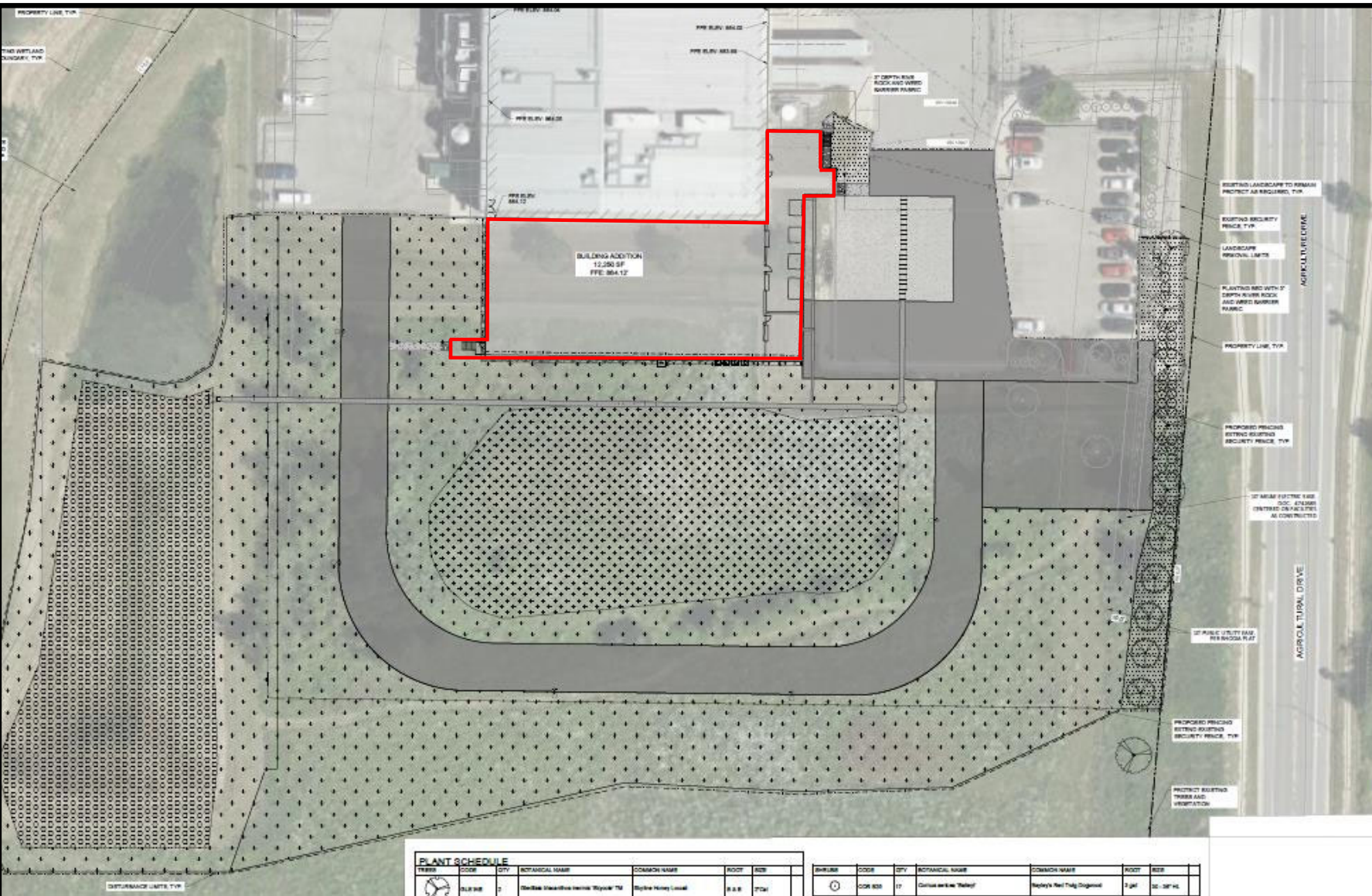
1 EXISTING VIEW - ROUTE 18 HIGHWAY
NOT TO SCALE



2 NEW VIEW - ROUTE 18 HIGHWAY
NOT TO SCALE



iff		1000 Industrial Blvd., Suite 101 International Towers East, 10th Floor Madison, WI 53703	
PROJECT INFO: SHIVACHATRY MULTI-FAMILY RESIDENTIALS 222 West Avenue #7, Suite 202 Cedar Rapids, Iowa 52401 319.246.2227 fax 319.246.2228 www.iff-hobby.com David J. Shivach Vishal S. Shivach			
TITLE: EXTERIOR 3D VIEWS UDC REVIEW IFF MADISON - BANYAN			
DRAWN:	Author	CHECKED:	Checked APPROVED:
DATE:	DATE NO:	DATE:	DATE:
E	UDC-07D		05/18/22
FILE: UDC-07D		Revisions and Logbook Entries	



LEGEND

- DISTURBANCE LIMITS
- PLANT BED
- 2" DEPTH RIVER ROCK AND 4" DEPTH SAND PUBLIC
- STEEL SIDING
- TURF GRASS BERMING
- NEOT BIRD MAT AND WERBONCH CONTROL MAT
- NATIVE BIRD MATING WITH BIRD MAT
- NEOT BIRD MAT WITH BIRD MAT
- NEOT BIRD MAT WITH BIRD MAT
- SECURITY FENCE

PRELIMINARY - NOT FOR CONSTRUCTION

REV	DATE	DESCRIPTION	BY	CHKD	APPR

iff
International Flavors & Fragrances Inc.
200 First Avenue, Suite 200 | Cedar Rapids, Iowa 52401
252.242.1111 | 1.800.345.1111 | www.internationalflavors.com

SHIVE BATTERY
200 First Avenue, Suite 200 | Cedar Rapids, Iowa 52401
252.242.1111 | 1.800.345.1111 | www.shivebattery.com

TITLE
LANDSCAPE PLAN
UDC REVIEW
IFF MADISON - BANYAN

DRAWN JLR **CHECKED** JNR **APPROVED** JNR **DATE** 01/16/2023

SYMBOL	CODE	QTY	BOTANICAL NAME	COMMON NAME	ROOT	BSZ
	001	1	Redbank Shrubland Native Willow™	Redbank Willow Local	B & B	75W

SYMBOL	CODE	QTY	BOTANICAL NAME	COMMON NAME	ROOT	BSZ
	002	17	Carolina Yellow Bell	Redbank Willow Local	2 gal	32-38" H