



BUILDING 100 - SOUTHEAST PHOTO OF EXISTING





BUILDING 100 - SOUTHEAST PHOTO OF EXISTING





BUILDING 100 - SOUTHEAST PHOTO OF EXISTING

WS DEVELOPMENT | HILLDALE PHASE 3



BUILDING 100 - SOUTHWEST PHOTO OF EXISTING



**BUILDING 100** Views from Site



**BUILDING 100** View from Price Place at Kelab Drive





**BUILDING 100** View from Kelab Drive



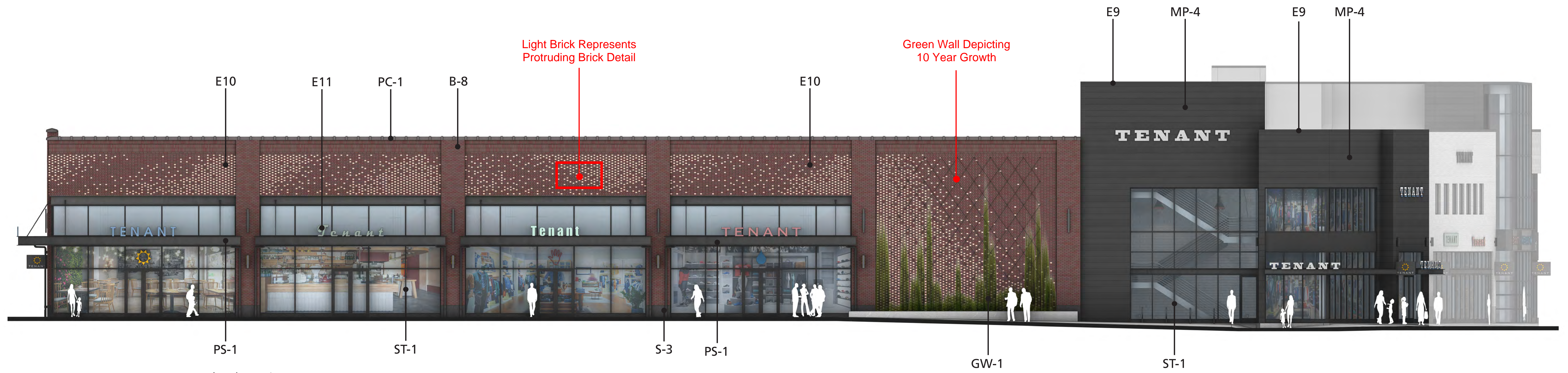
**BUILDING 100** Views from Site



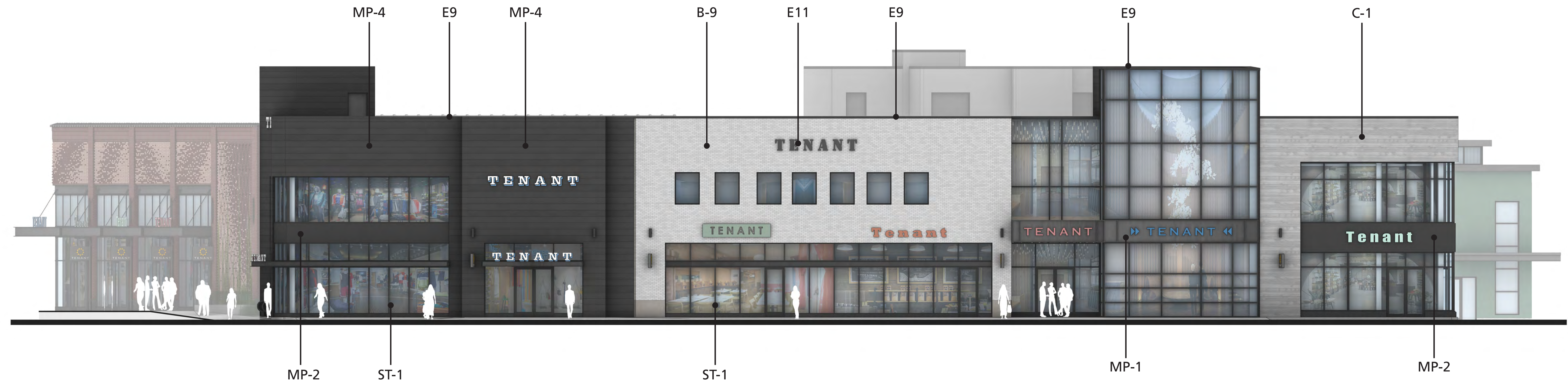
**BUILDING 100** View of South Facing Canopy



# BUILDING 100 Annotated Building Elevations



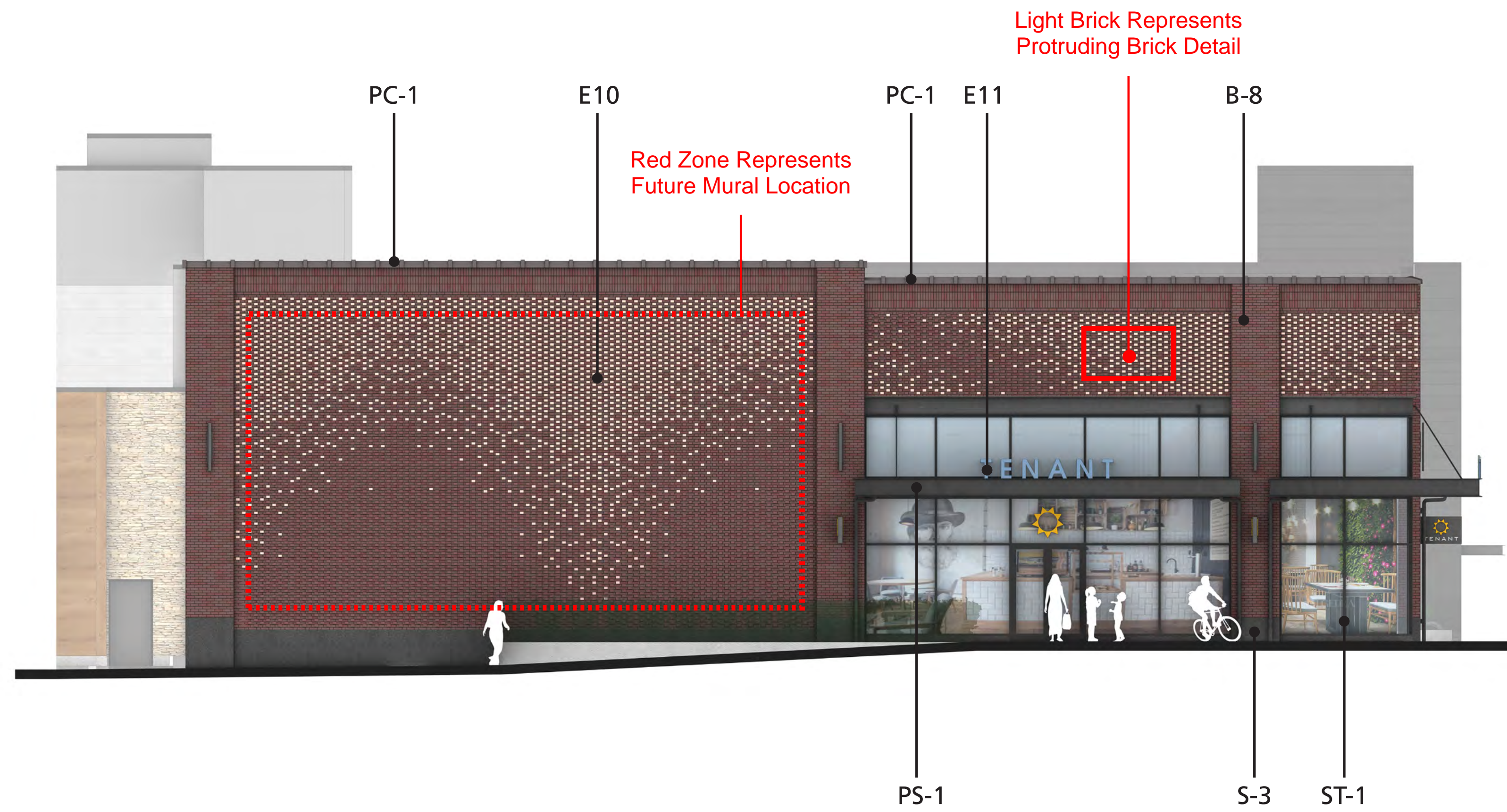
**BUILDING 100** South Elevation



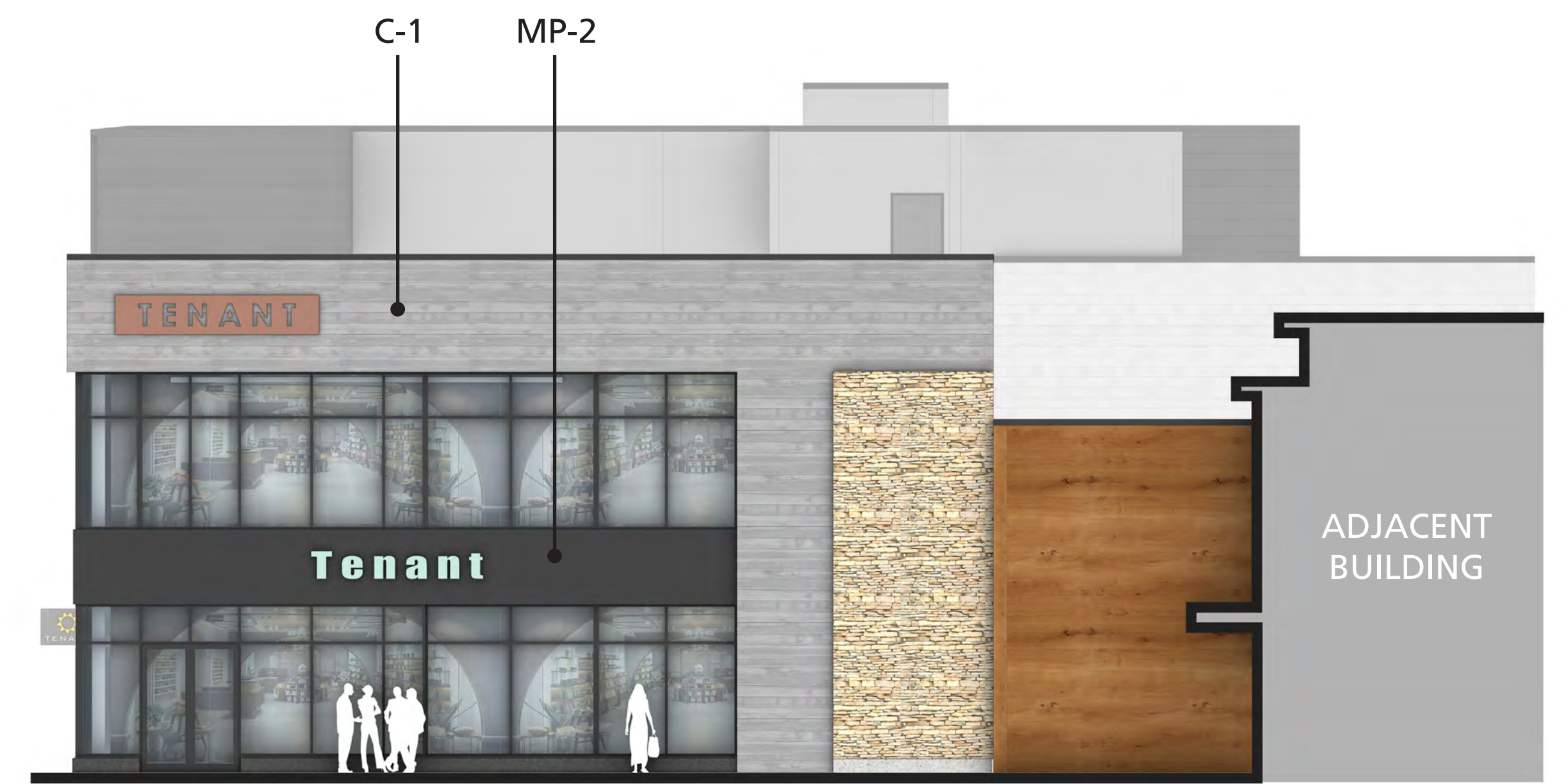
**BUILDING 100** East Elevation



**BUILDING 100** Annotated Building Elevations



**BUILDING 100** West Elevation

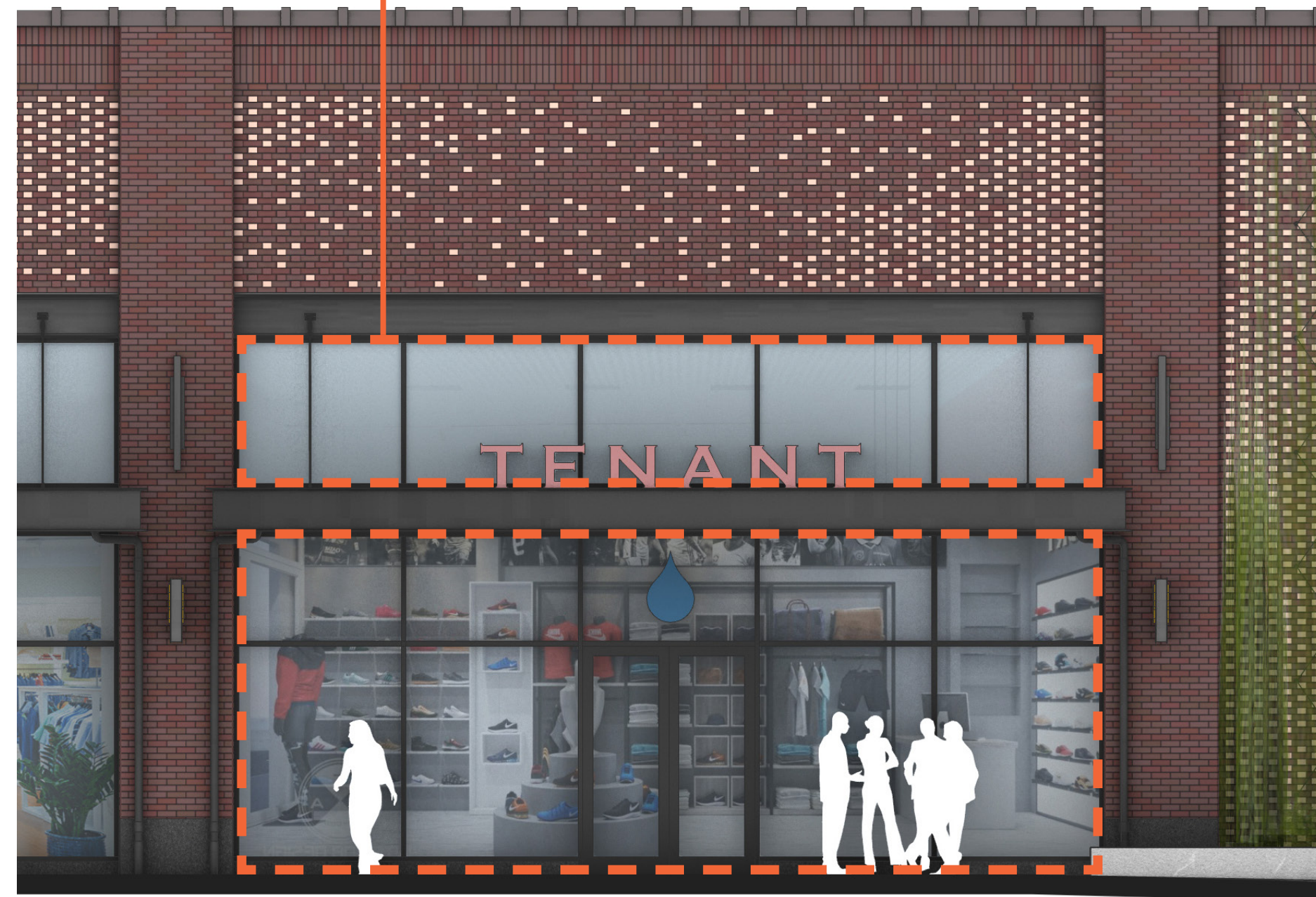


**BUILDING 100** North Elevation



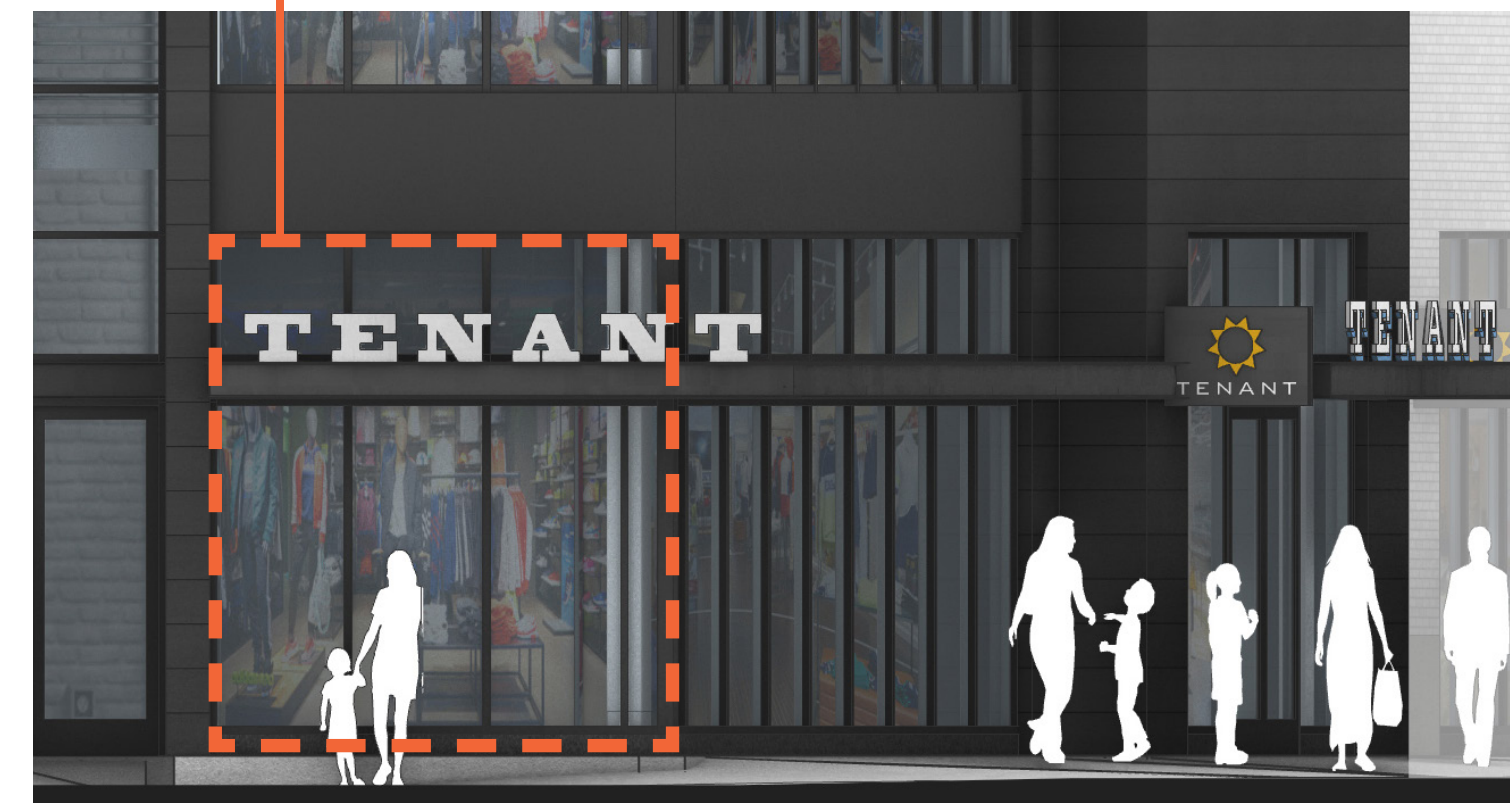
# BUILDING 100 Tenant Controlled Areas

Tenant Controlled within Dashed Area



South Elevation Typical Storefront Bay

Tenant Controlled within Dashed Area



South Elevation

Tenant Controlled within Dashed Area



East Elevation

Tenant Controlled within Dashed Area

Tenant Controlled within Dashed Area

Tenant Controlled within Dashed Area

Tenant Controlled within Dashed Area

Tenant Controlled within Dashed Area



East Elevation



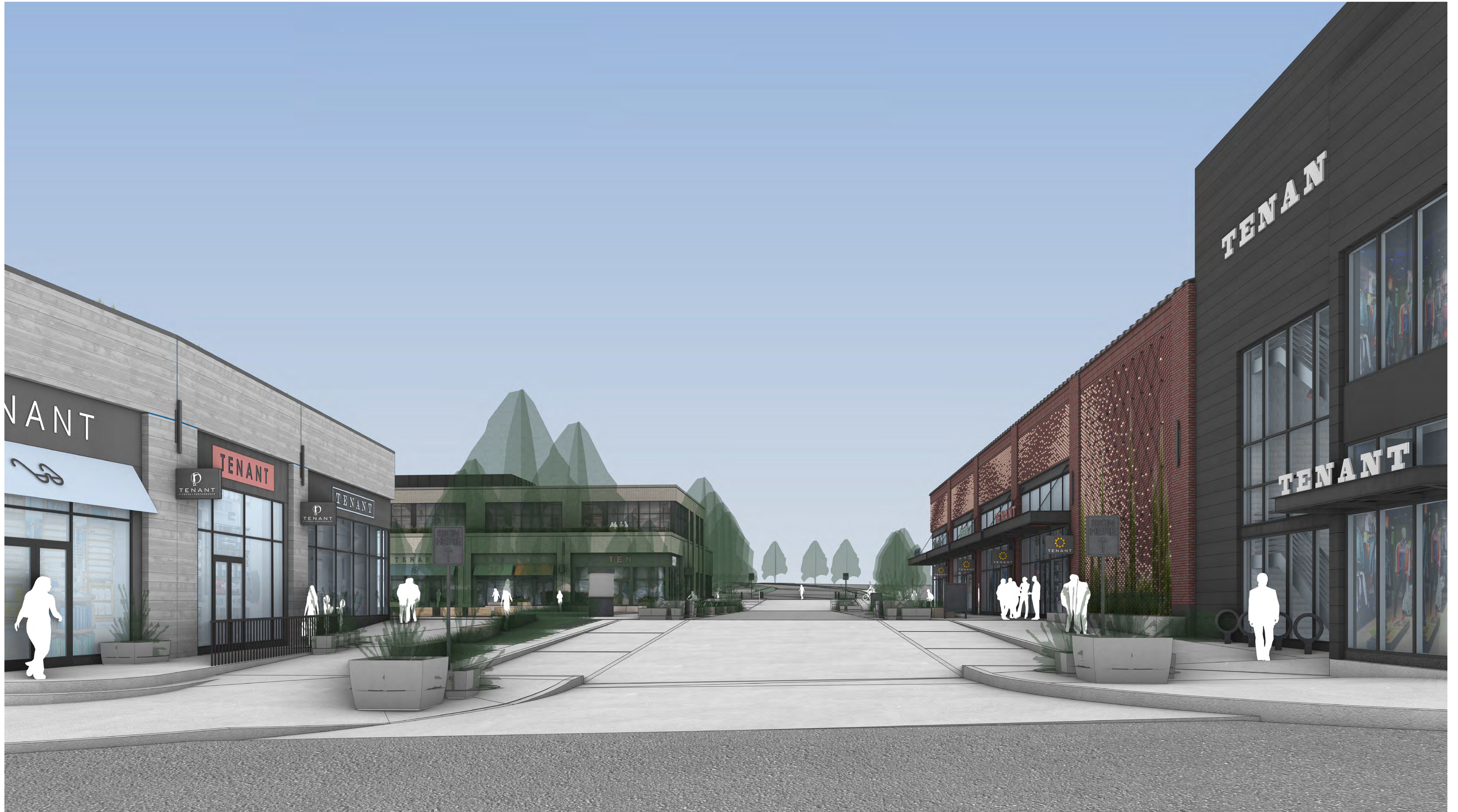
**BUILDING 100** Views from Site



**BUILDING 100** View from Parking Lot (Future Dev. Location)



**BUILDING 100** Views from Site



**BUILDING 100** View from Price Place at Kelab Drive



**B-8 Masonry Face Brick**

color + finish      Endicott 'Medium Ironspot 46 Smooth'  
dimensions:        Modular brick (3-5/8" deep, 2-1/4" tall, 7-5/8" wide)  
comments:         3/8" mortar joint, running bond, Flemish bond,  
                         soldier stacked bond  
                         additional patterns TBD



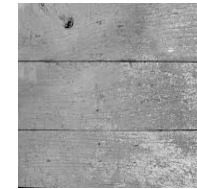
**B-9 Existing Masonry - Painted**

color + finish        TBD. Breathable masonry paint  
dimensions:        Modular brick (3-5/8" deep, 2-1/4" tall, 7-5/8" wide)  
comments:         3/8" mortar joint, running bond



**C-1 Board Formed Precast Concrete Panels**

color + finish        Stonecast Products, Inc. Color TBD  
dimensions         6" thick precast veneer, 8" tall board formed texture  
comments:         basis of design was the spec used at  
                         Café Hollander at Hilldale  
                         (patch to match existing board formed concrete)



**GW-1 Green Wall Cable System**

color + finish:      Carl Stahl Architektur Greencable Greenery System  
dimensions         TBD  
comments            see spec for details



**MP-1 Metal Panel**

color + finish:      Alucobond Plus 'Graphite Mica' 4mm ACM panels  
dimensions         varies  
comments





**MP-2 Metal Panel**

color + finish: Fairview Architectural Vitrabond ZCM  
Zinc Composite Panels  
Color is 'Charcoal Zinc' FV5290 (flat finish)

Dimensions Panel sizes vary

Comments

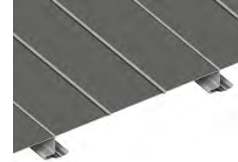


**MP-4 Metal Panel**

color + finish ATAS International, Design Wall System  
panels with concealed fasteners and color matched trim  
Stock Color: "Black" Standard Finish

dimensions 12" horizontal panels

comments (color is referencing ATAS colors, 40 color options available)

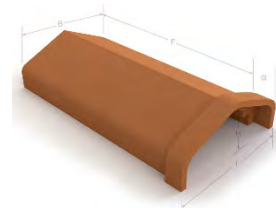


**PC-1 Parapet Wall Coping**

color + finish Superior Clay Wall Coping  
"Double Slant"  
Custom glaze - grey

dimensions 24" l x 18-1/8" w x 5-1/2" h

comments



**PS-1 Painted Steel**

color + finish Color to match EFCO Ultra-Escent II Mica  
"Gun Barrel"

dimensions varies, TBD

comments



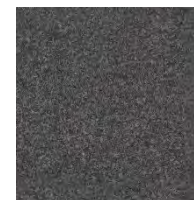
Gun Barrel

**S-3 Stone**

color + finish Granite Base, Coldspring 'Mesabi Black', thermal finish

dimensions varies below storefronts

comments





## ST-1 Metal Storefront

color + finish	Color to match EFCO Ultra-Escent II Mica "Gun Barrel"
dimensions	varies
comments	see spec



## Material Keynotes

<b>E9</b>	Painted metal parapet caps (color matched to MP-1 façade panels)
<b>E10</b>	Protruding brick detail, Flemish bond brick pattern
<b>E11</b>	Canopy signage painted by tenant