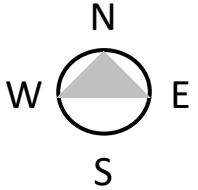


Olin Park Facility



Location Map

February 3, 2021



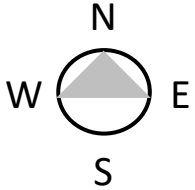
Olin Park Facility



Property Limits

Scale: 1 In = 200 Ft

February 3, 2021



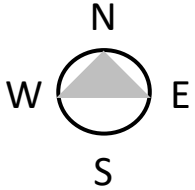
Olin Park Facility



Scale: 1 in = 50 Ft

Site Contours

February 3, 2021





Aerial View

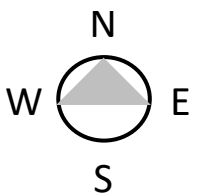
Olin Park Facility



Site Plan

① SITE UTILITY PLAN
SCALE: 1" = 30'-0"

February 3, 2021

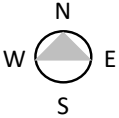


Olin Park Facility



Site Plan – Proposed

February 3, 2021



Olin Park Facility



Bike Rack



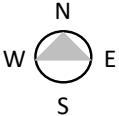
Screen Fence



Light Bollard

Site Plan – Proposed

February 3, 2021



SITE FURNISHING IMAGES/PRODUCT CUTS



BIKE RACK

tgs
THE GREEN SOURCE

BIKE RACK

DESCRIPTION
This bollard is a heavy-duty galvanized steel bollard with a powder coated finish. It is designed for use in parking lots, streets, and other areas where vehicle control is needed.

APPLICATIONS
Parking lots, streets, and other areas where vehicle control is needed.

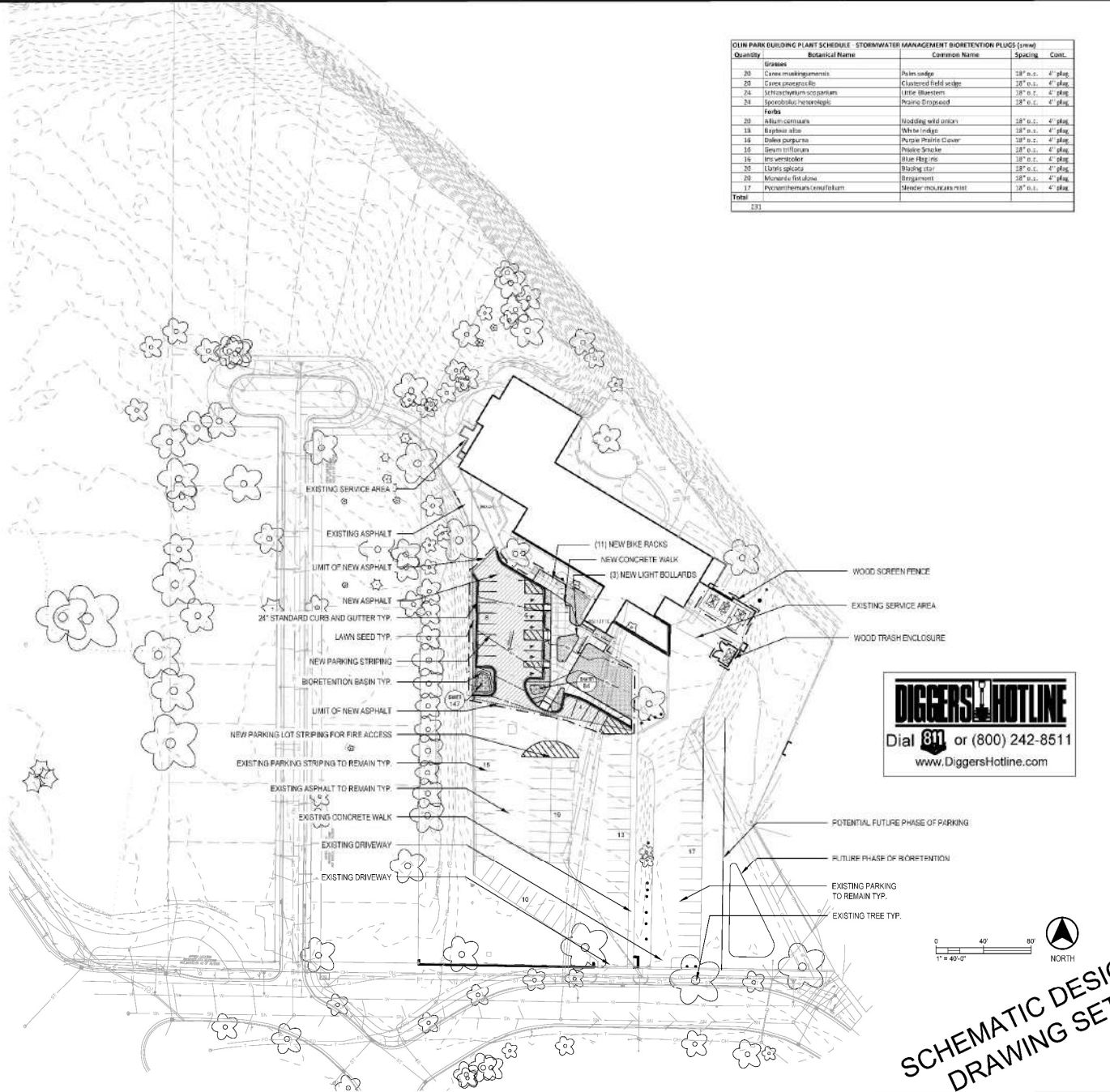
FEATURES
Heavy-duty galvanized steel construction. Powder coated finish. Available in various heights and colors.

INSTALLATION INFORMATION
See technical drawing for installation details.

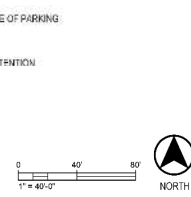
LIGHT BOLLARD



WOOD SCREEN FENCE



Quantity	Botanical Name	Common Name	Spacing	Cost
Grasses				
20	Carex mariscoides	Palm sedge	18" o.c. 4' plant	
20	Carex proserpicola	Clustered field sedge	18" o.c. 4' plant	
24	Schizanthus scoparium	Little bluestem	18" o.c. 4' plant	
24	Sporobolus heterostachyus	Feather Fescue	18" o.c. 4' plant	
Forbs				
20	Alysicarpus	Harding wild onion	18" o.c. 4' plant	
18	Rhynchospora	White sedge	18" o.c. 4' plant	
18	Dobsonia purpurea	Purple Prairie Clover	18" o.c. 4' plant	
10	Sium triflorum	Prairie Snake	18" o.c. 4' plant	
16	Iris versicolor	Blue Flag Iris	18" o.c. 4' plant	
20	Urtica speciosa	Stinging nettle	18" o.c. 4' plant	
20	Morone latifolia	Bayonet	18" o.c. 4' plant	
17	Phytolacca americana	Maider buckeye nut	18" o.c. 4' plant	
Total				



1 SITE PLAN
SCALE: 1" = 40'-0"

**SCHEMATIC DESIGN
DRAWING SET**

G.A.
GINSBERG ARCHITECTS

InSite Consulting Architects
115 E. Main / STE 200
Madison, Wisconsin 53703
608-264-8625
608-287-1702 (fax)
info@csac.com

play MADISON PARKS

Pure Earth
1000 University Avenue, Suite 100
Madison, WI 53706
608-261-1111
www.pureearth.com

**OLIN PARK FACILITY IMPROVEMENTS
330 E LAKESIDE STREET
MADISON, WISCONSIN 53715**

NOTE: ALL DIMENSIONS GIVEN
SHALL BE CONSIDERED TO BE
"A" IF NOT SPECIFIED OTHERWISE.

ICA NO. COM 20-002

SITE PLAN

ISSUED FOR UDC
02-03-2021

L-100

Olin Park Facility



Approach from Lakeside Street



Lake Monona view looking West



Adjacent Residential Property at East

February 3, 2021



Olin Park Facility

Existing Loading Dock Area – EAST Side of Facility



Olin Park Facility

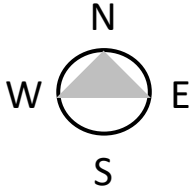


Existing Loading Dock Area – WEST Side of Facility

Olin Park Facility



February 3, 2021



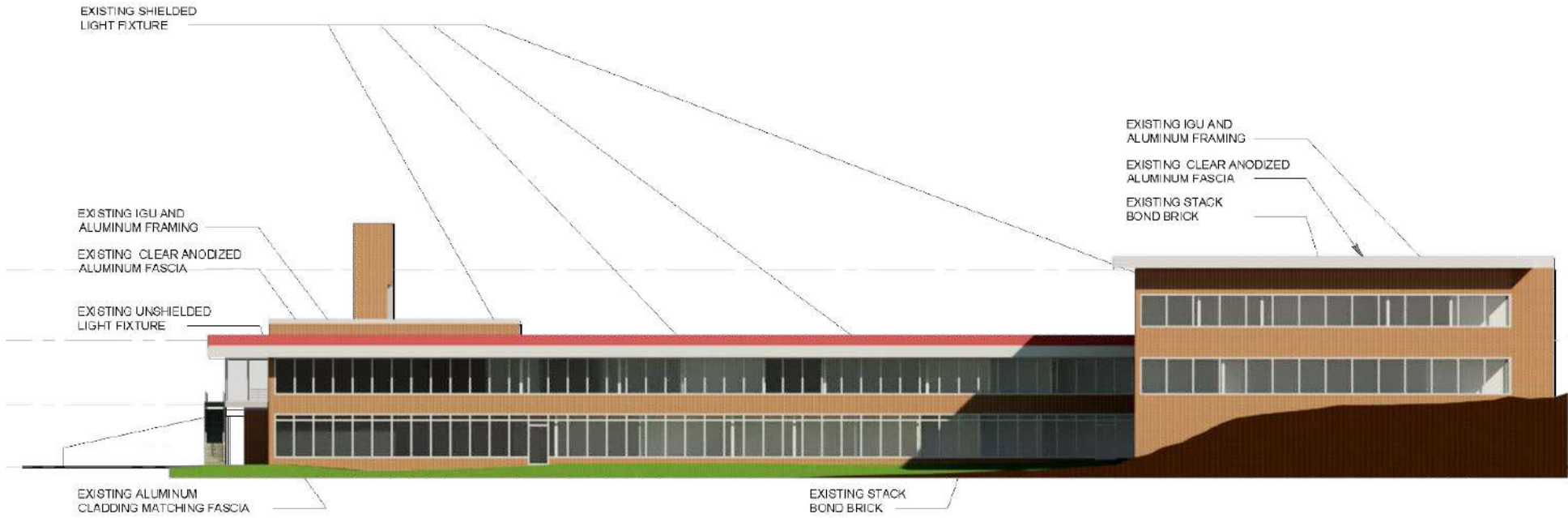
Olin Park Facility



Existing Monument Sign



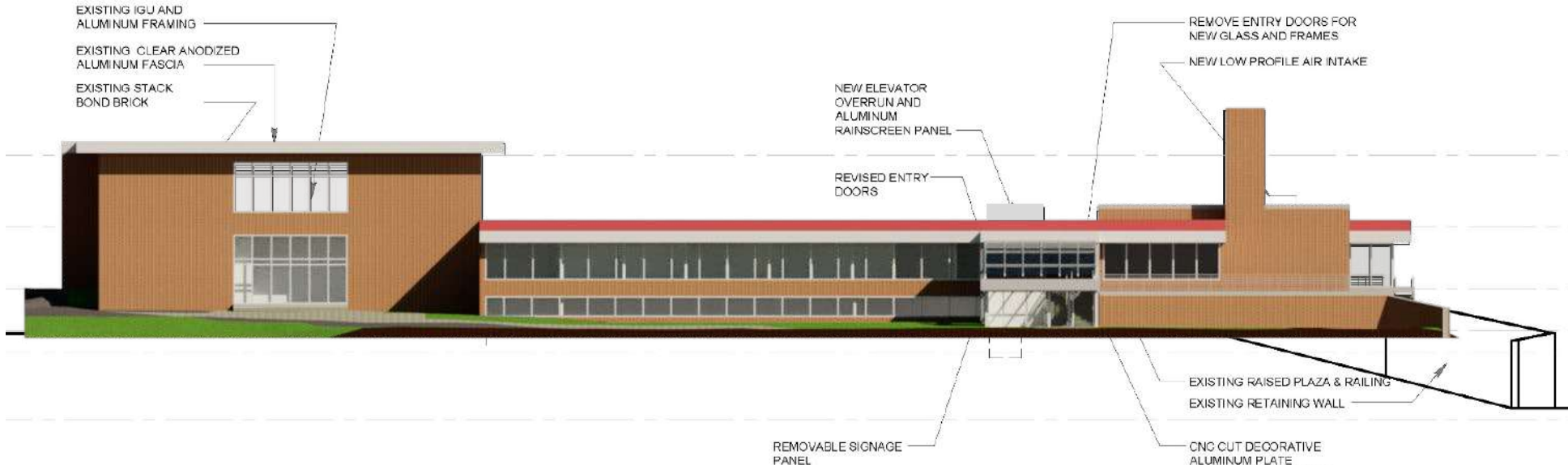
Olin Park Facility



1 NORTH ELEVATION
SCALE: 1/16" = 1'-0"



2 WEST ELEVATION
SCALE: 1/16" = 1'-0"



3 SOUTH ELEVATION
SCALE: 1/16" = 1'-0"



4 EAST ELEVATION
SCALE: 1/16" = 1'-0"

February 3, 2021

Olin Park Facility



Main Entrance - Existing

Metal Panels

Pre-manufactured metal composition panel in silver metallic with clear anodized finish and 3/4" reveals

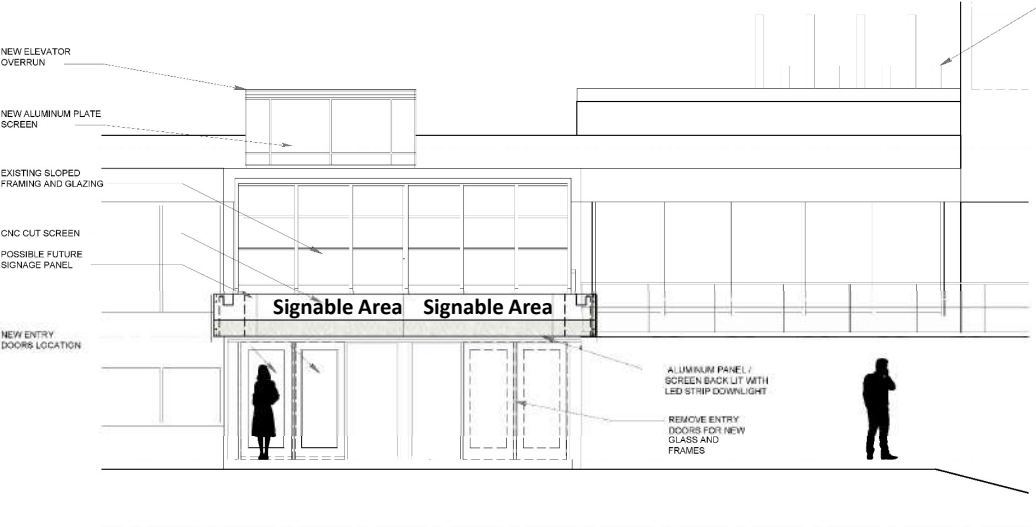


Glazing

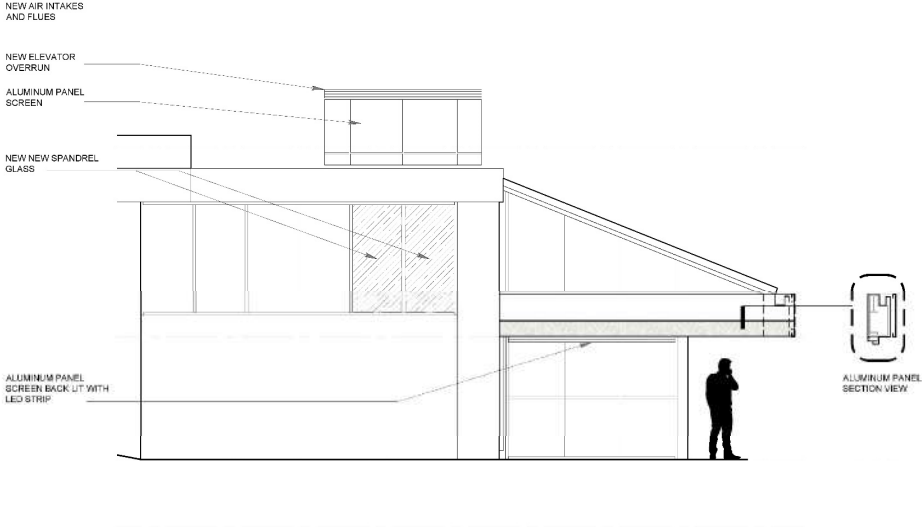
Glazing at front entrance to be re-used where possible and match existing where new.

Main Entrance - Proposed

Olin Park Facility

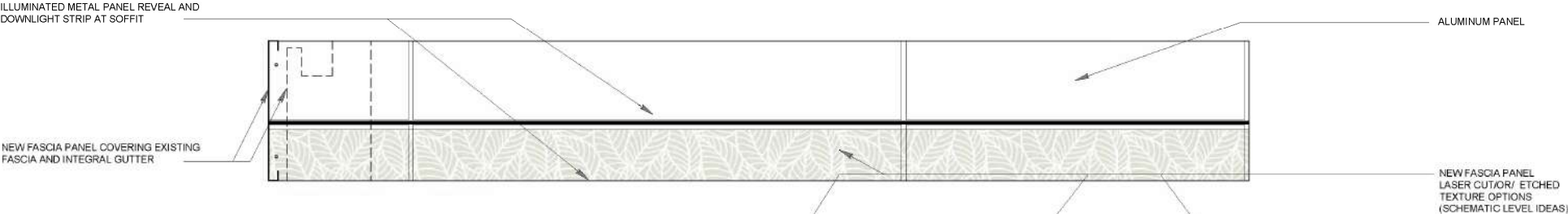
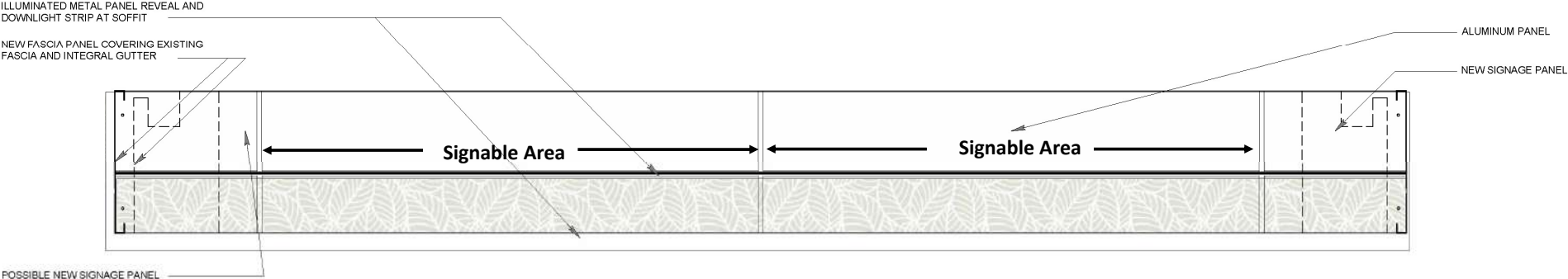


1 SOUTH ENTRY ELEVATION
A501 SCALE: 1/4" = 1'-0"

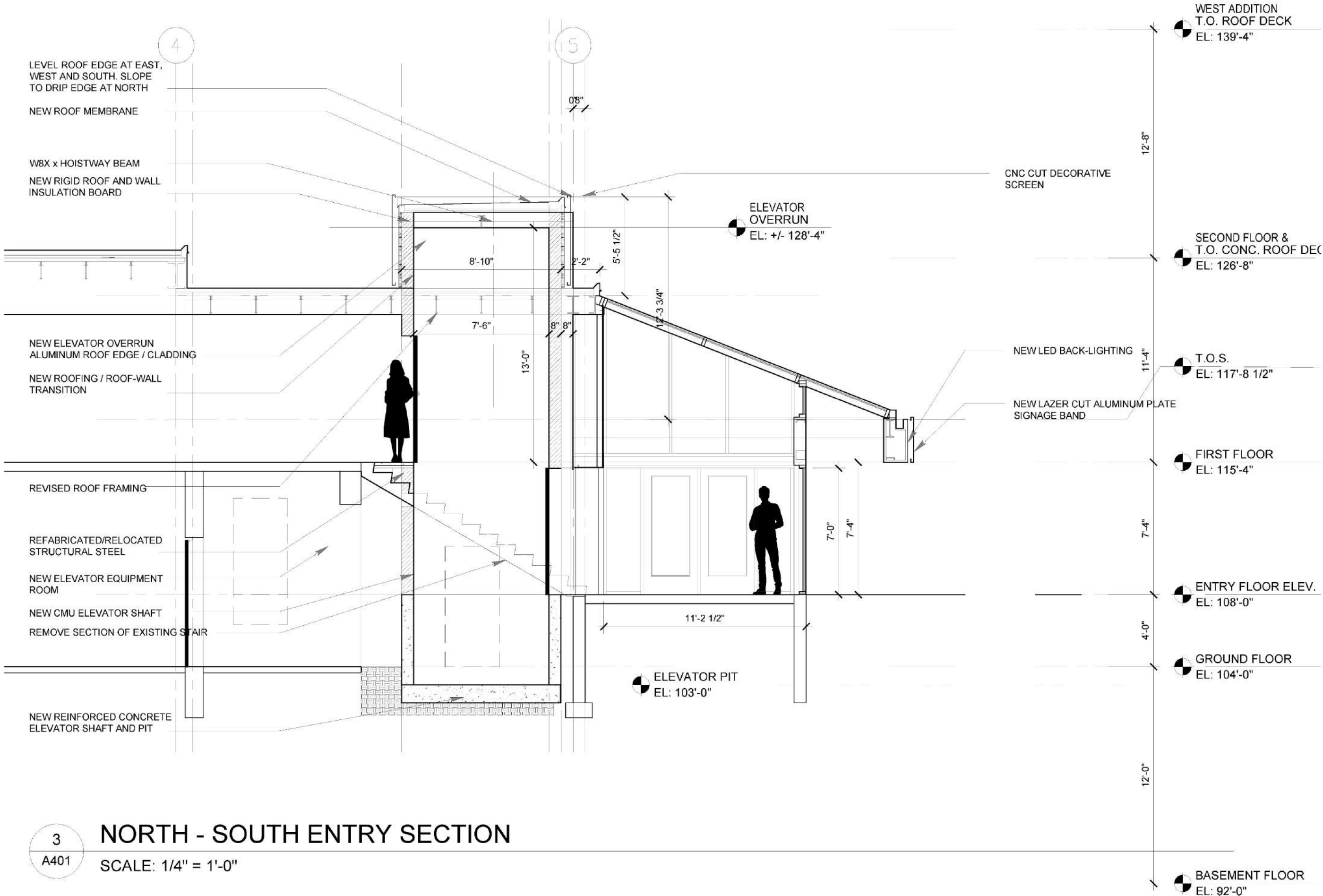


2 WEST ENTRY ELEVATION
A501 SCALE: 1/4" = 1'-0"

Olin Park Facility



Olin Park Facility



3
A401

NORTH - SOUTH ENTRY SECTION

SCALE: 1/4" = 1'-0"

February 3, 2021

Questions / Answers

