

APPLICATION FOR
URBAN DESIGN COMMISSION
REVIEW AND APPROVAL

AGENDA ITEM # _____

Project # _____

02773

DATE SUBMITTED: <u>January 18, 2006</u>	Action Requested
UDC MEETING DATE: <u>January 25, 2006</u>	<input type="checkbox"/> Informational Presentation
	<input checked="" type="checkbox"/> Initial Approval and/or Recommendation
	<input checked="" type="checkbox"/> Final Approval and/or Recommendation

PROJECT ADDRESS: 2703-2805 West Beltline Hwy. Frontage Rd. 2810-2818 Todd Dr.

ALDERMANIC DISTRICT: 14

OWNER/DEVELOPER (Partners and/or Principals) LGI, LLC. ARCHITECT/DESIGNER/OR AGENT: Potter Lawson and Vierbicher Associates, Inc.

CONTACT PERSON: Andy Inman

Address: Vierbicher Associates, Inc.
999 Fourier Dr. Suite 201, Madison, WI 51717

Phone: 608-826-0532

Fax: 608-826-0530

E-mail address: ainm@vierbicher.com

TYPE OF PROJECT:

(See Section A for:)

- Planned Unit Development (PUD)
- General Development Plan (GDP)
- Specific Implementation Plan (SIP)
- Planned Community Development (PCD)
- General Development Plan (GDP)
- Specific Implementation Plan (SIP)
- Planned Residential Development (PRD)
- New Construction or Exterior Remodeling in an Urban Design District * (A public hearing is required as well as a fee)
- School, Public Building or Space (Fee may be required)
- New Construction or Addition to or Remodeling of a Retail, Hotel or Motel Building Exceeding 50,000 Sq. Ft.
- Planned Commercial Site

(See Section B for:)

- New Construction or Exterior Remodeling in C4 District (Fee required)

(See Section C for:)

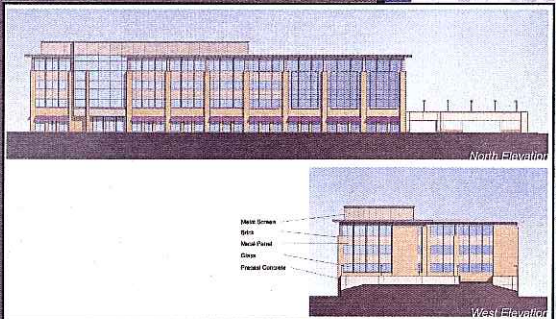
- R.P.S.M. Parking Variance (Fee required)

(See Section D for:)

- Comprehensive Design Review* (Fee required)
- Street Graphics Variance* (Fee required)
- Other _____



*Public Hearing Required (Submission Deadline 3 Weeks in Advance of Meeting Date)



LANDMARK

GATE LLC
Madison, Wisconsin



*Urban Design Commission
Initial and Final Approval Submittal*



Landmark Gate, LLC
Mortenson Investment Group
3113 W. Beltline Hwy
Madison, WI 53713
Phone: 608.288.2858

T ABLE OF CONTENTS

Developer:
Mortenson Investment Group
3113 W. Beltline Hwy
Madison, WI 53713
Phone: 608.288.2858



Builder:
Ideal Builders
1406 Emil Street
Madison, WI 53713
Phone: 608.271.8111
Fax: 608.271.6233



Architect:
Potter Lawson, Inc.
15 Ellis Potter Court
Madison, WI 53711
Phone: (608) 274-2741
Fax: (608) 274-3674



Engineer:
Vierbicher Associates, Inc.
999 Fourier Drive, Suite 201
Madison, WI 53717
Phone: (608) 826-0532
Fax: (608) 826-0530



LETTER OF INTENT.....	3
LOCATION & SITE INFORMATION.....	4
EXISTING CONDITIONS.....	5
GENERAL SITE PLAN.....	8
BUILDING FLOOR PLANS.....	10
BUILDING ELEVATIONS.....	16
BUILDING SECTION.....	20
BUILDING MATERIALS.....	21
LANDSCAPING PLAN.....	22
LIGHTING.....	23
ATTACHMENT NO. 1: LIGHTING DETAILS.....	24

Submitted January 18, 2006
Last Updated December 19, 2005

LETTER OF INTENT

December 14, 2005

City of Madison Urban Design Commission
210 Martin Luther King, Jr. Blvd
Madison, WI 53710

Re: Letter of Intent for Landmark Gate GDP/SIP

Dear Urban Design Commission Members:

This packet is being submitted for initial and final approval of the Urban Design Commission for Landmark Gate at the intersection of Todd Drive and the West Beltline Highway Frontage Road in the City of Madison. The project will redevelop six existing underutilized properties to provide retail and office space to the area. The new facility will be called Landmark Gate and will greatly improve the availability of jobs and amenities for other commercial occupants in the area. The Landmark Gate redevelopment project is consistent with the City of Madison's desire to increase density within the Beltline Highway/Todd Drive area. In addition, Mortenson Investment Group and Landmark Gate, LLC have been working cooperatively with the City of Madison and the Department of Transportation to prepare a plan for the West Beltline Frontage Road that will incorporate numerous improvements to ease existing congestion, create a more neighborhood friendly environment, and support redevelopment. Landmark Gate will serve as a catalyst to improvements throughout the South Beltline area and, ultimately, the Park Street Corridor.

Existing Conditions

The site is currently occupied by seven individual parcels that will be combined to create the Landmark Gate site. The site includes the existing building at 2805 W. Beltline Highway occupied by Sergenian's Floor Coverings, Deonne Salon & Day Spa, and Members First Credit Union. This existing building will remain. When combined, the single parcel will have a total land area of approximately 181,417 square feet, or roughly 4.16 acres. The site is currently used by a variety of retail tenants including Open Pantry, Grand China, Selective Video, Midwest Billiards (vacated), Ripple Apartments (vacated), the Bridge Club, and 2805 W. Beltline Highway. The existing structures on the site will be demolished, with the exception 2805 parcel. In the redevelopment plan, the total square footage listed above includes the Sergenian's parcel. The 2805 parking lot has been redesigned to be compatible with the new development. Photographs documenting existing conditions and structures are located on pages seven through nine of this document.

Zoning

The zoning of Landmark Gate is proposed to be changed PUD-SIP from the existing classification. This zoning classification allows the two buildings on the site (Landmark Gate and 2805) to exist on the same lot and share the parking lot. In addition, this zoning classification is allows the development to establish setbacks deemed appropriate for the site.

Uses

The proposed Landmark Gate facility will have 22,650 square feet of ground-floor retail space with three levels of office and service commercial above (69,015 sq. ft.), for a total of 91,665 square feet. In addition, the 2805 building will remain on the site, which has 31,300 square feet. Combined, the site will include approximately 123,000 square feet of building area. This produces a Floor Area Ratio (FAR) on the site of 1.47.

Parking and Loading

Landmark Gate will incorporate both surface parking for retail customers and structured parking for office users. There are a total of 429 parking stalls on the site, which is one space per 286 square feet (or 3.48 stalls per 1,000 square feet). The surface parking stalls along a single aisle adjacent to Todd Drive and the 2805 building for a total of 184 spaces for retail customers of Landmark Gate and 2805 W. Beltline Highway. The majority of parking will be hidden below and behind the building in the parking structure. The structured parking provides 245 spaces for office users on two levels of below-grade parking and one level of structured parking behind the building.

Trucks will access the site from Todd Drive and deliveries will be made on the southeast corner of the building. An interior corridor has been designed in the parking structure for deliveries to individual tenants.

Access

Access to the site will be provided by three separate drives. One will allow vehicles to access the site off of Todd Drive, while the other two will be accessible via the West Beltline Highway

Frontage Road. The west drive from the Frontage Road provides access for deliveries, tenants and customers of the 2805 building. This is a significant reduction relative to the nine access points under existing conditions. Both WisDOT and the City of Madison Traffic Engineering Department concur with the access points.

Design

The design includes a brick, metal panel and glass building. The ground floor is dedicated to retail with the possibility of fabric awnings to highlight the retail component. The office lobby and entrance is accentuated with additional glass, which extends to a roof screen that will be used for tenant identification. One row of parking is shown in front of the building to be used by the retail customers. The majority of parking is below and behind the building.

Signage

The ground floor of Landmark Gate is reserved for retail services. The individual retail spaces will require proper signage on the façade of the building. Specific tenants have not yet been identified, therefore, signage is currently unknown. A signage packet will be submitted to the City for review as tenants are secured.

Landscaping

Site landscaping will be provided as shown on the plans provided in this document. The Developer shall install landscaping when building construction has been completed. Provisions regarding the maintenance of site landscaping is detailed in the covenants provided in Attachment No. 2 of this document.

Miscellaneous

Landmark Gate is a mixed-use development with commercial office and retail uses. It is anticipated that the three floors of office space will be utilized primarily during normal business hours between 7:00 a.m. to 6:00 p.m., Monday through Friday. The ground-floor retail is likely to be open later in the evening and on weekends. The retail is anticipated to serve the adjacent neighborhood and office employees.

Sustainable Design Features

The redevelopment of this site increases the density on a developed site, and increases the pervious surface area. In addition, the design includes rain infiltration gardens on the site and high-performance glazing on the building. The majority of parking stalls are located in a structured parking facility below grade. Also, the building will have an energy-efficient shell and HVAC system in addition to a narrow footprint that allows for increased day-lighting efficiency and access to exterior views.

Summary

The redevelopment of this site will provide the City with a neighborhood center for Arbor Hills and will spur an increase in the number of jobs, amenities, and quality of life in the area. We look forward to working with the City Staff, Urban Design Commission, Plan Commission, and the Council to make Landmark Gate a successful project that will be considered a model for high-quality redevelopment in the City of Madison.

Respectfully Submitted by,



Andrew Inman, P.E.
VIERBICHER ASSOCIATES, INC.

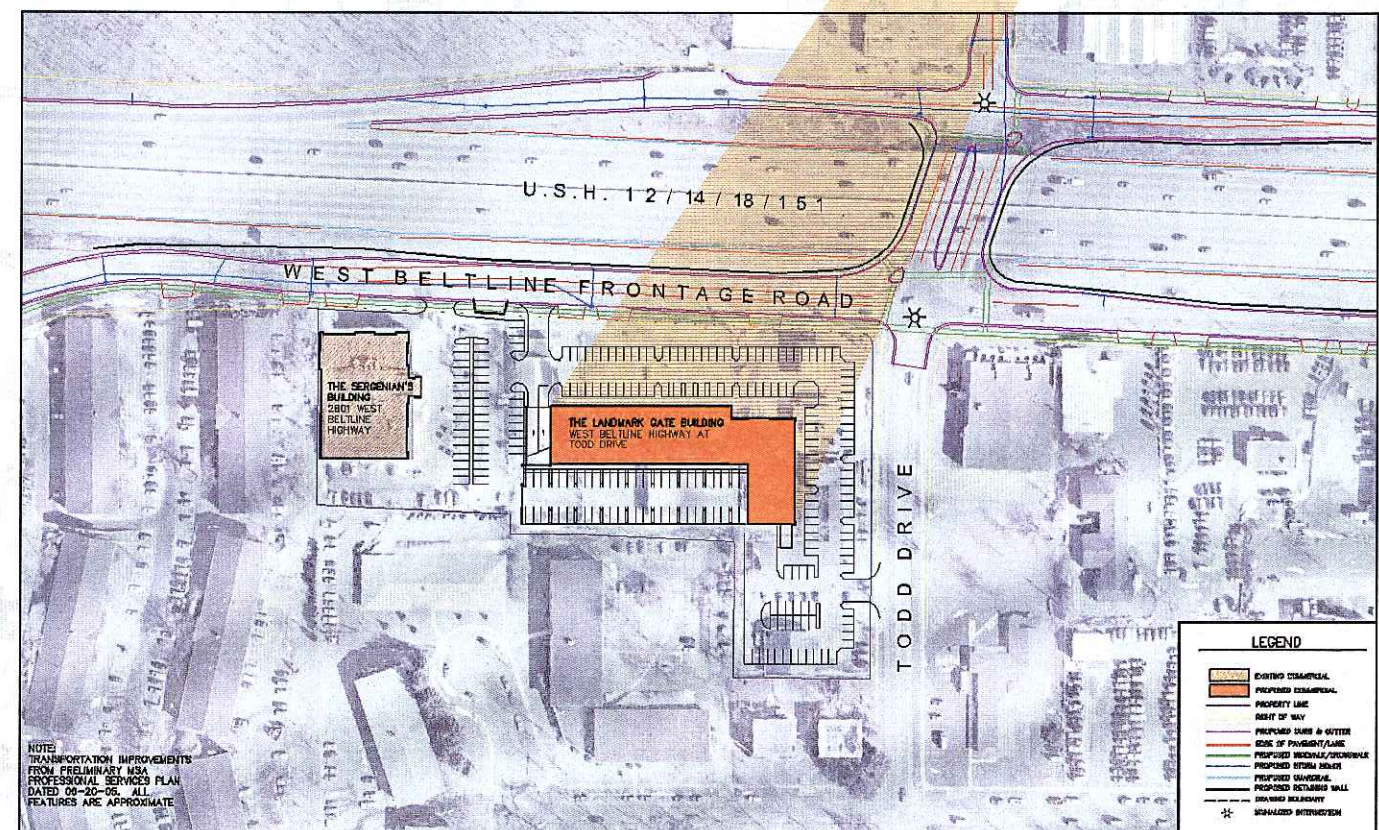
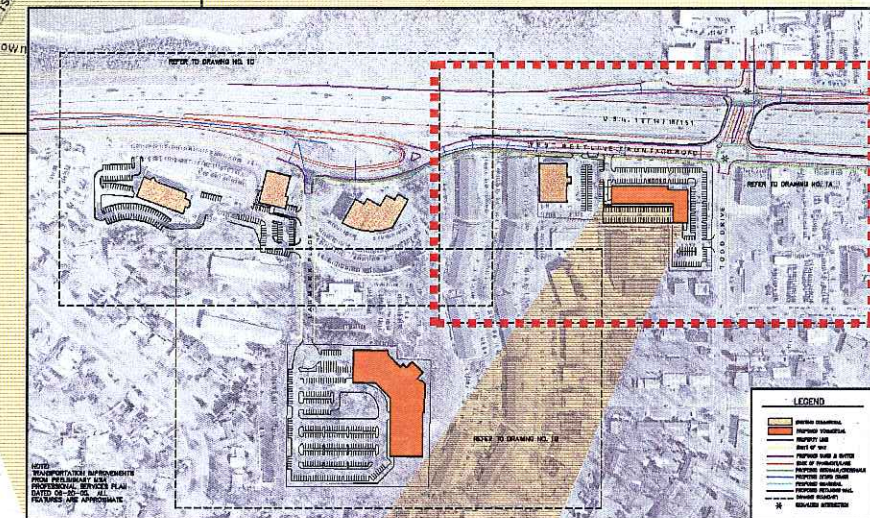


LOCATION & SITE INFORMATION

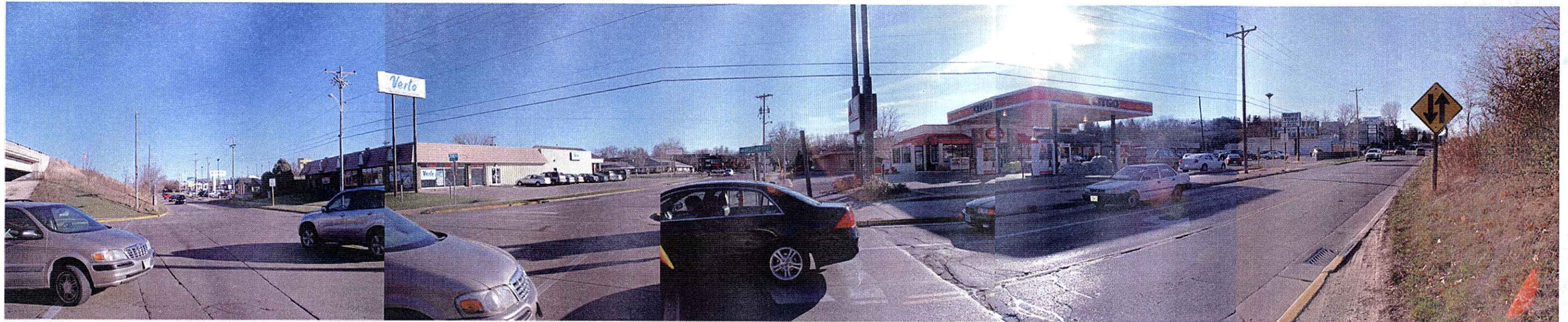
The Landmark Gate site consists of 4.16 acres located at the intersection of Todd Drive and the West Beltline Highway Frontage Road in the City of Madison. The Landmark Gate project team has been working with the City of Madison and the Wisconsin Department of Transportation for over three years to plan for corridor improvements in this area.

The site is currently comprised of seven individual parcels, which will be combined through a CSM to create a single Landmark Gate development site. The existing uses on the site include retail services, several of which have been vacated. The retailers currently located there include Open Pantry, Grant China, Selective Video, Midwest Billiards, the Bridge Club, Deonne's Salon & Day Spa, Members First Credit Union and Sergenian's Floor Coverings. The Ripple Apartments also provided multi-family residential dwelling units on the site, however, those units have been vacated.

The parcels surrounding the site contain a mix of commercial, retail and residential uses. Directly to the west of the 2805 building, which will remain on the site, are multi-family apartment buildings. Further west is the remainder of Mortenson Investment Group's central beltline campus. Multi-family units are located adjacent to the site to the south, and the Beltline Highway travels immediately to the north. Todd Drive is contiguous with the east property line. The land use of the parcels east of Todd Drive is currently retail. This area is also being considered for redevelopment.



Todd Drive/ West Beltline Highway Frontage Road Intersection



East

South

West

West Beltline Highway Frontage Road at Landmark Gate Site



East

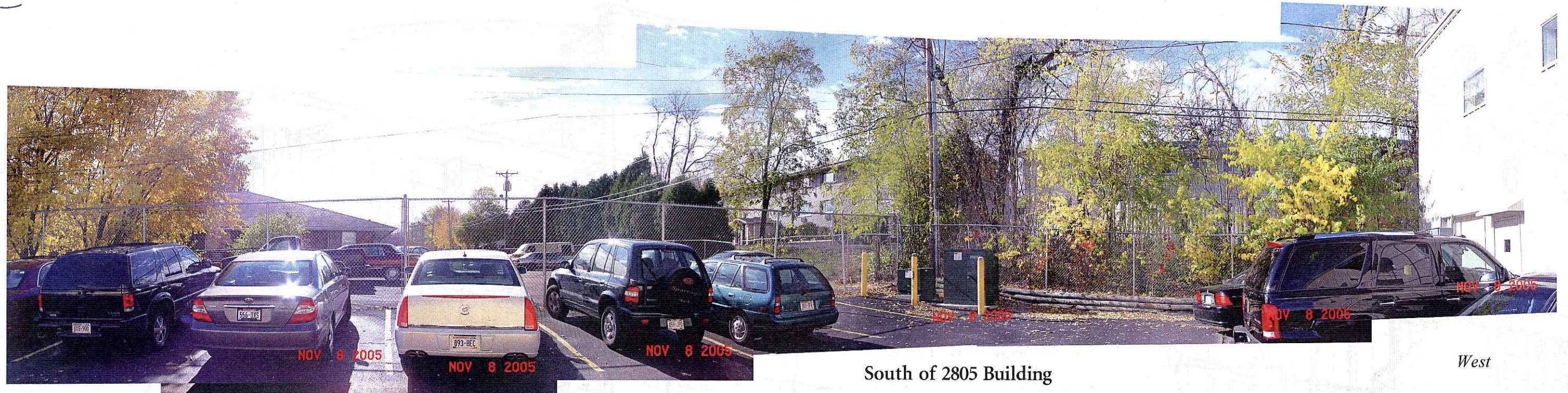
South

West

Landmark Gate

© POTTER LAWSON, INC. 11/22/05

Site Photos



South

South of 2805 Building

West



Landmark Gate site, looking at Selective Video

Landmark Gate

Todd Drive and W. Beltline Highway Frontage Road

Potter Lawson, Inc.

11.09.05

Todd Drive at Landmark Gate site



North

East

South



South

West

North

Landmark Gate site

Landmark Gate
Todd Drive and W. Beltline Highway Frontage Road

Potter Lawson, Inc.
11.09.05

Pedestrian / Bicycle Access

Public sidewalks are currently located along Todd Drive and will be installed along the West Beltline Highway Frontage Road when the Wisconsin Department of Transportation makes infrastructure improvements to the area. The improvements will provide better pedestrian and bicycle access to the west and south. Paving and landscaping patterns on the site will help to accommodate pedestrians and bicyclers internally, as shown in the landscaping and site plans. There are four bicycle racks provided throughout the site for the retail areas, as shown on the landscaping plan. Additional secure bicycle storage is provided in the underground parking structure for the office employees.

Utilities

All storm sewer, sanitary sewer and water laterals are designed to accommodate the needs of the facility. The laterals will connect to the existing utilities located in the public right-of-way. These connections have been coordinated with the City of Madison and the Wisconsin Department of Transportation.

Illuminated Areas

The surface parking area surrounding the north and east sides of the building will be illuminated for safety and identification with lighting as shown in the lighting plans. Larger fixtures will be utilized on the exterior sides of the parking, while a smaller pedestrian-scale lighting system will be used along the sidewalk adjacent to the building.

Buffering and Screening

Multi-family housing occupies the site to the south of Landmark Gate. In order to minimize the impact of the structure on this residential neighborhood, a fence and landscaping will be located along the southern boundary of the parcel. A rain garden will be located between the parking structure and the south property line, not only for stormwater purposes, but also to act as a small buffer between the structure and the neighbors to the south.

With the location of the Beltline Highway adjacent to the site, there was initial concern that the noise from daily traffic would have a significant impact on the office occupants of the building. To help comply with the Wisconsin Department of Transportation and the City of Madison noise requirements, the building has been set back from the elevated Beltline Highway.

Parking and Loading

Landmark Gate will incorporate both surface parking for retail customers and structured parking for office users. There are a total of 429 parking stalls on the site, which is one space per 286 square feet (or 3.48 stalls per 1,000 square feet). The surface parking stalls along a single aisle adjacent to Todd Drive and the 2805 building for a total of 184 spaces for retail customers of Landmark Gate and 2805 W. Beltline Highway. The majority of parking will be hidden below and behind the building in the parking structure. The structured parking provides 245 spaces for office users on one level of below-grade parking and two levels of at-grade and structured parking behind the building.

Trucks will access the site from Todd Drive and deliveries will be made on the southeast corner of the building. An interior corridor has been designed in the parking structure for deliveries to individual tenants.

Public Areas

The ground-floor retail areas will be accessible to the public during operating hours; however, the entire site will be privately owned and maintained.

Trash & Snow Removal and Storage

Solid waste will be removed from the site by a private company, hired by the property owner. Space for solid waste storage has been allocated in the southeastern corner of the building near the loading area. Snow removal will also be con-

tracted privately. Snow will be stored in the islands and medians. If excessive snowfall exceeds the site's storage capacity, it will be trucked off-site.

Setbacks

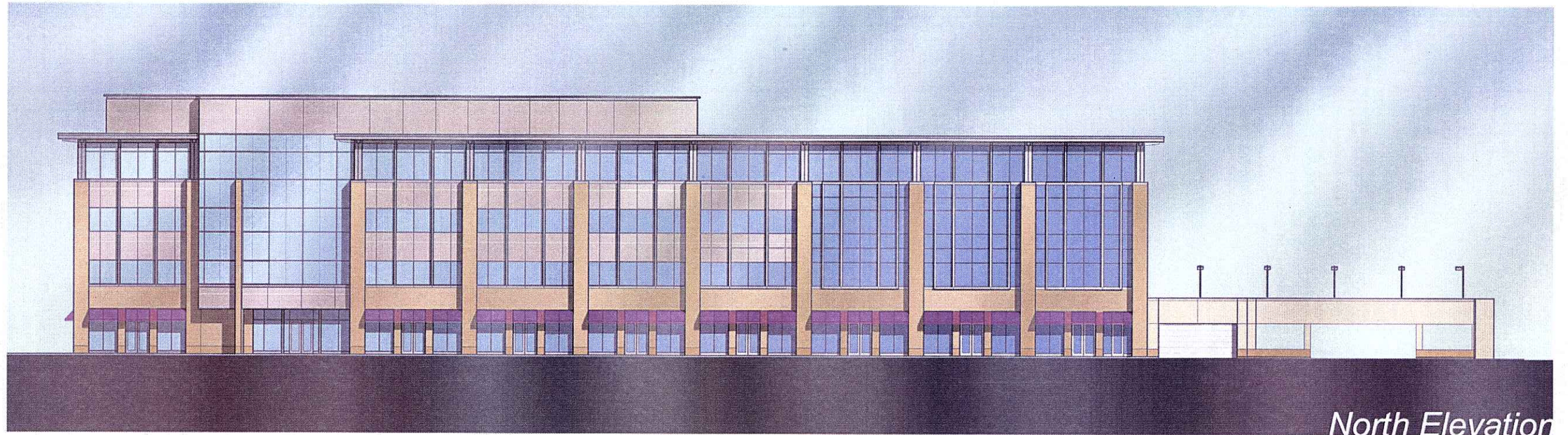
The currently zoning requires a thirty foot rear-yard setback. The building envelope of Landmark Gate meets these requirements on the entire southern portion of the site. However, the structured parking is located to the rear of the building and encroaches upon this setback. The distance of the parking structure from the rear lot line varies between 15 and 22 feet across most of the structure. The southwestern-most corner of the parking structure is located near an interior corner of the site, and is approximately seven feet from the closest lot line. The PUD zoning would allow this setback on the site in order to accommodate a higher density than currently exists.

Sustainability

The redevelopment of this site increases the overall density, but through design pervious surface area is also increased. In addition, the design includes rain infiltration gardens on the site and high-performance glazing on the building. The majority of parking stalls are located in a structured parking facility below grade. Also, the building will have an energy-efficient shell and HVAC system in addition to a narrow footprint that allows for increased day-lighting efficiency and access to exterior views.



BUILDING FLOOR PLAN & ELEVATIONS



North Elevation



West Elevation

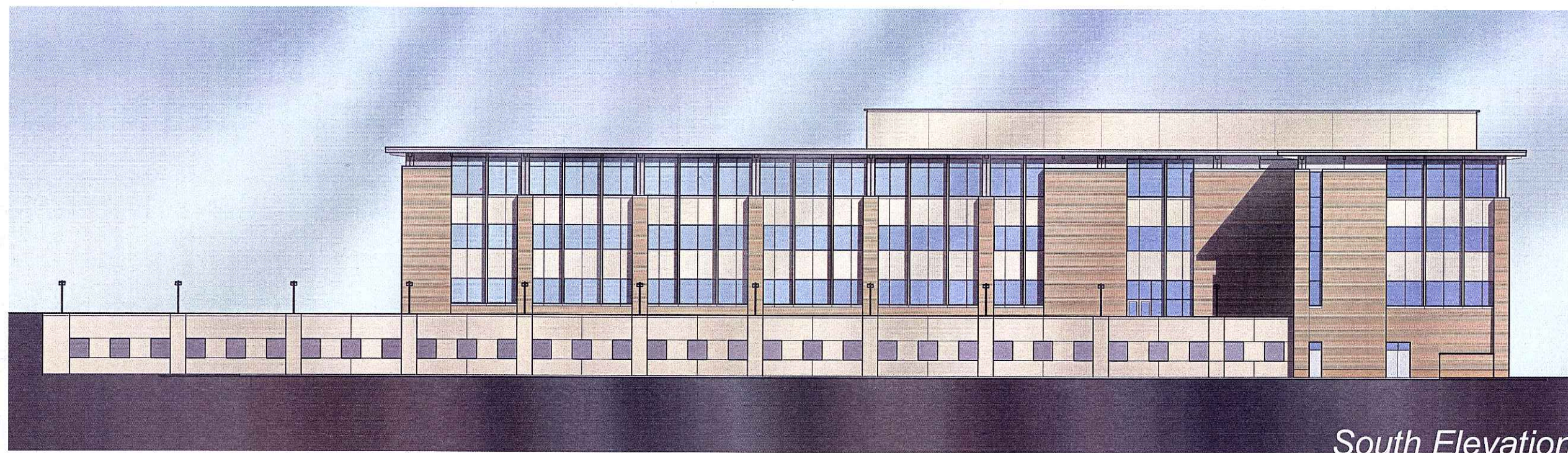
- Metal Screen
- Brick
- Metal Panel
- Glass
- Precast Concrete

Landmark Gate

© POTTER LAWSON, INC. 11/22/05

Elevations

NOT TO SCALE



South Elevation



East Elevation

Landmark Gate

© POTTER LAWSON, INC. 11/22/05

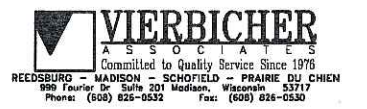
Elevations

NOT TO SCALE

Potter Lawson



Consultants:



Notes:

Date	Issuance/Revisions	Symbol
10/12/05	Marketing	

LANDMARK GATE

TODD DRIVE AND THE BELTLINE

MADISON, WISCONSIN

LANDMARK GATE, LLC

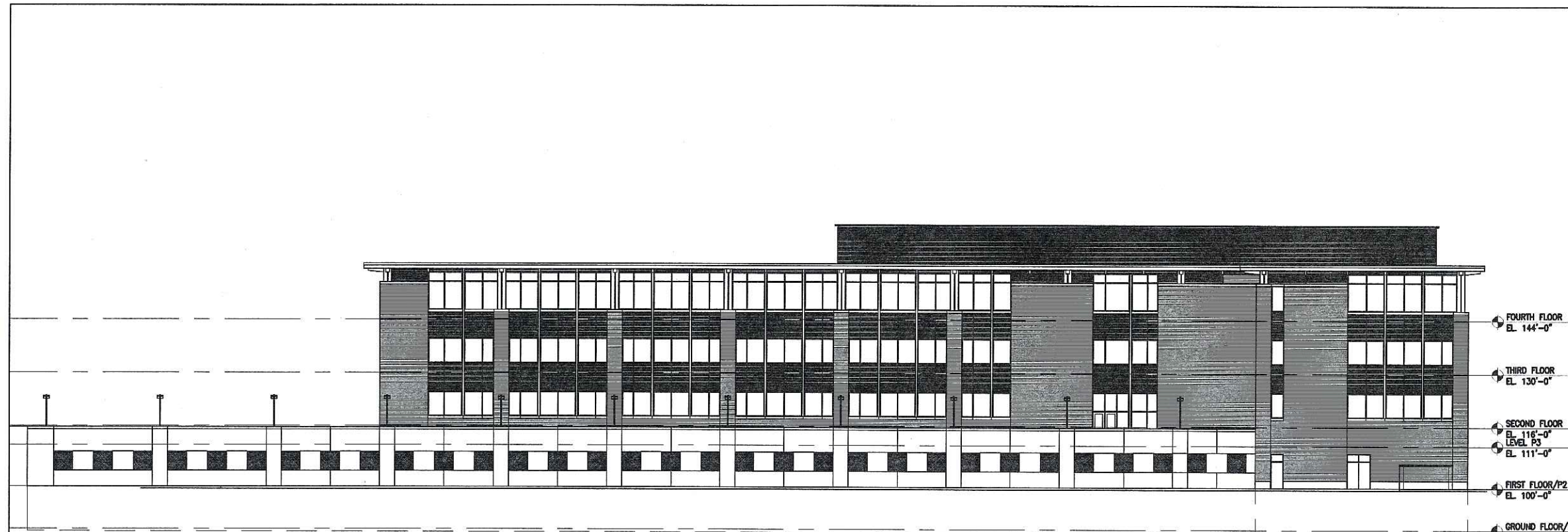
Drawing Title:
BUILDING ELEVATIONS

PLI Project Number:
2004.06.00

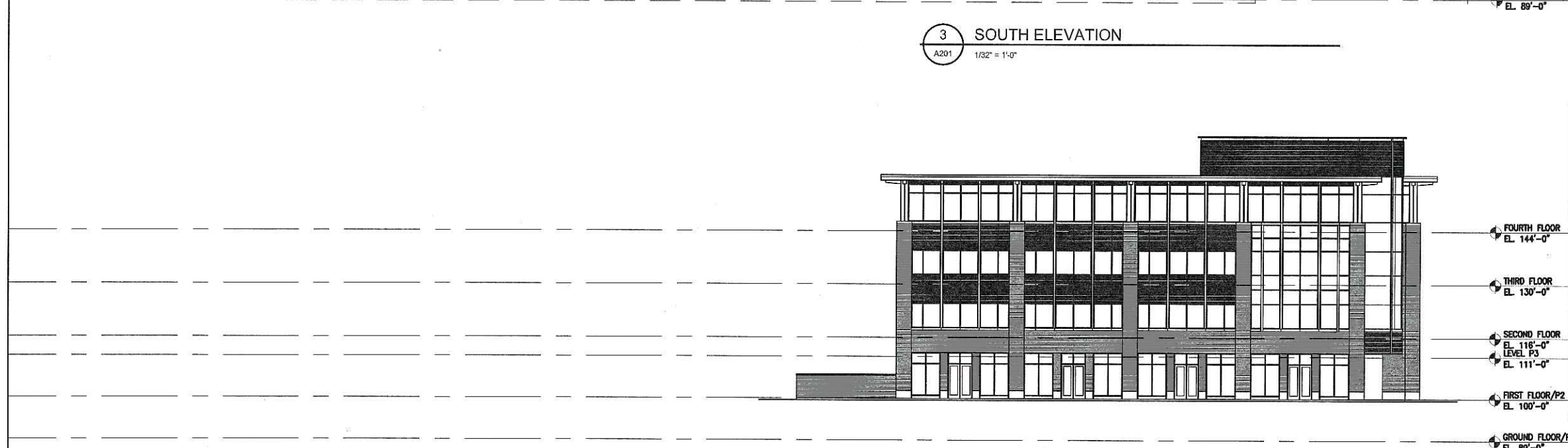
Drawing No.

A202

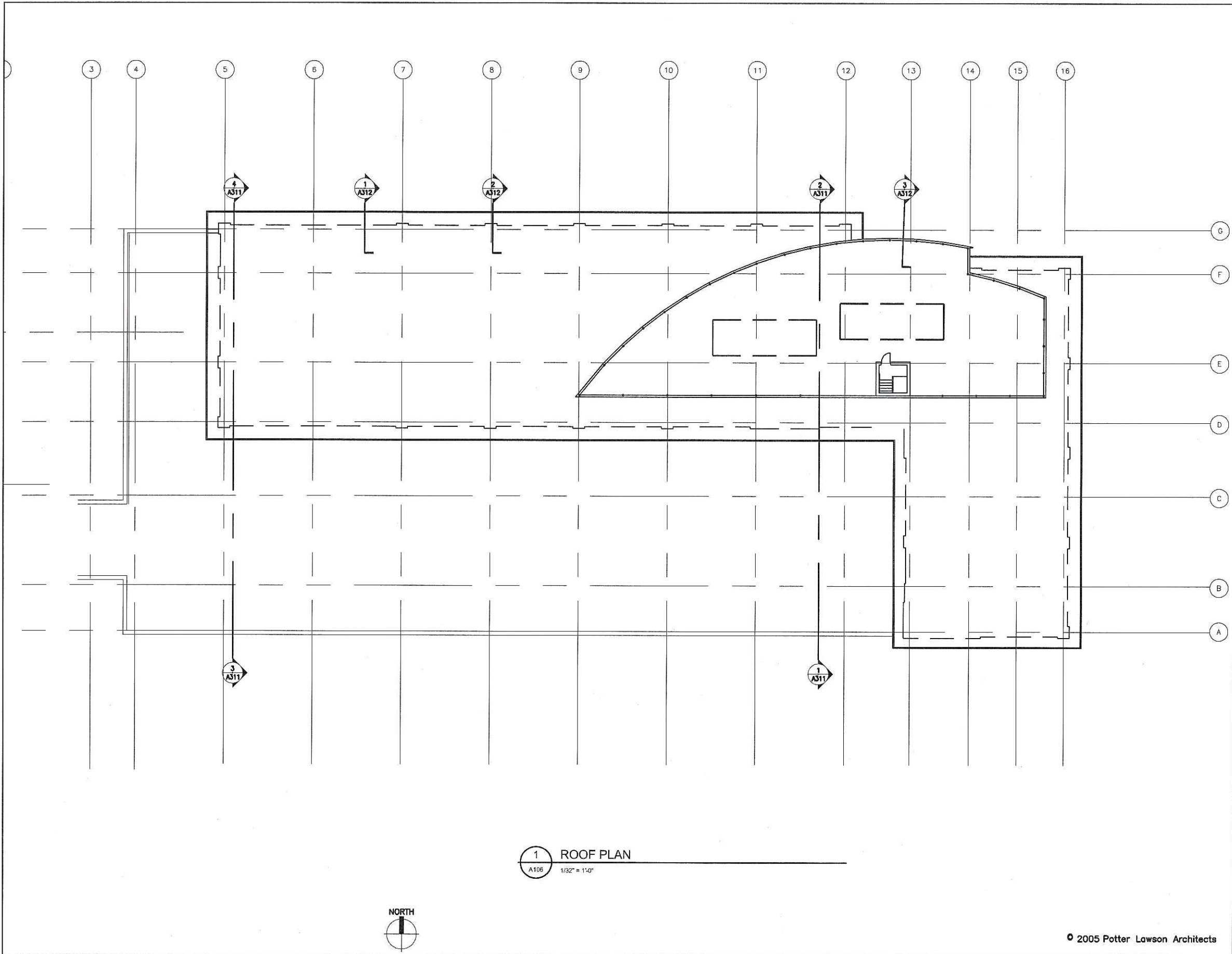
Drawn By:



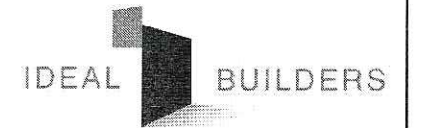
3 SOUTH ELEVATION
A201 1/32" = 1'-0"



4 EAST ELEVATION
A201 1/32" = 1'-0"



Potter Lawson



Consultants:



Notes:

11/07/05 Progress Print		
Date	Issuance/Revisions	Symbol

LANDMARK GATE

TODD DRIVE AND THE BELTLINE

MADISON, WISCONSIN

LANDMARK GATE, LLC

Drawing Title:

ROOF PLAN

PLI Project Number:

2004.06.00

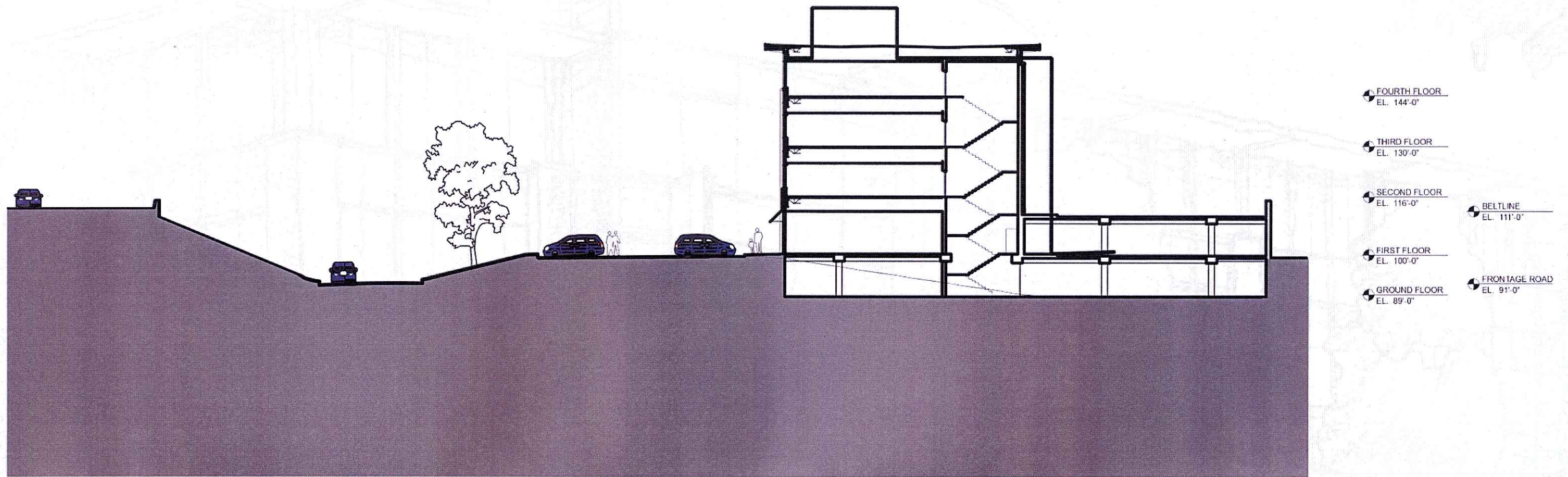
Drawing No.

A106

Drawn By:

MJK

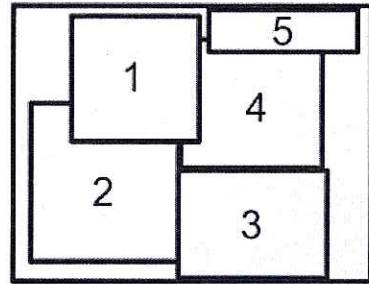
© 2005 Potter Lawson Architects



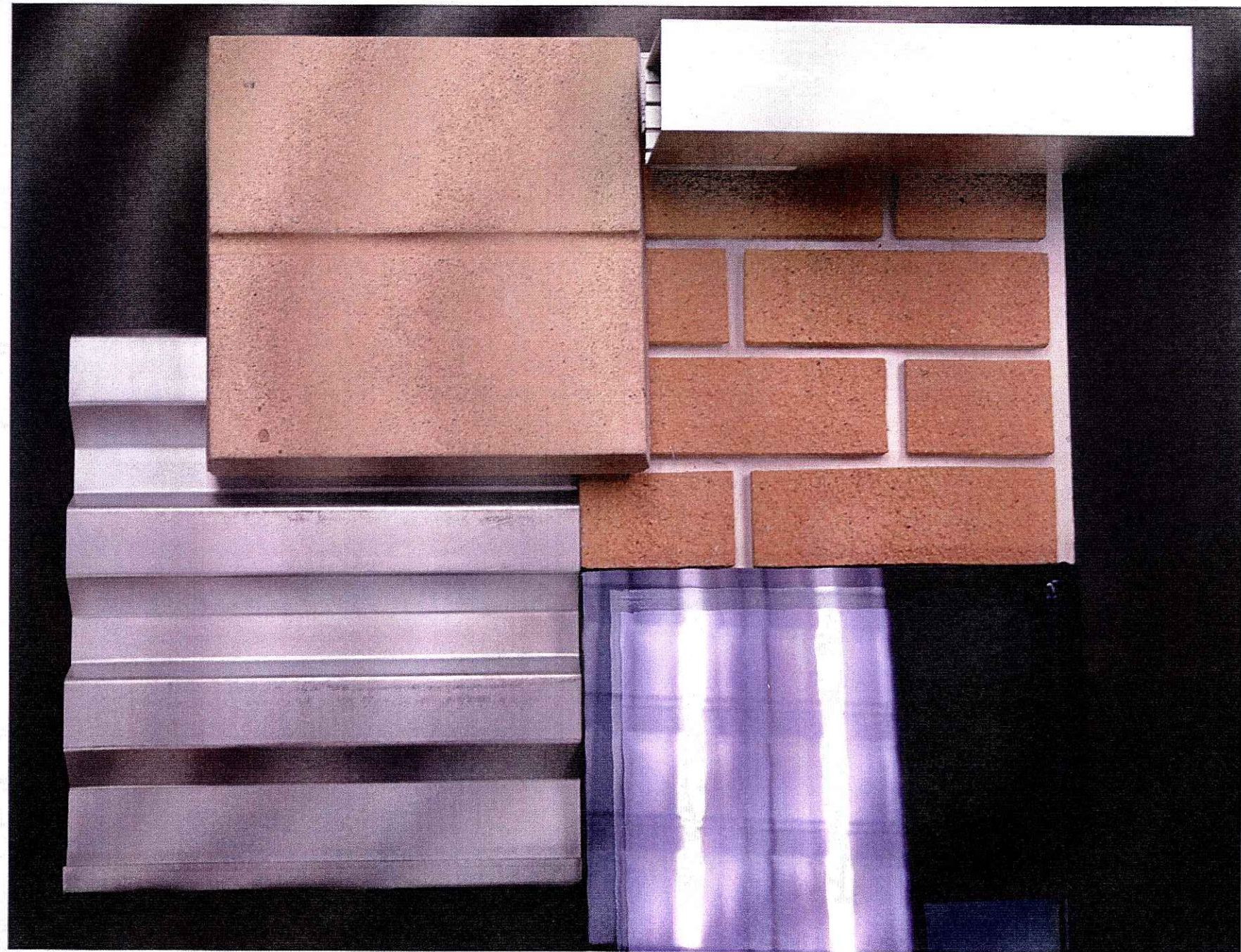
Landmark Gate

© POTTER LAWSON, INC. 11/22/05

Site Section



1. Tinted precast concrete for parking garage panels.
2. Horizontal ribbed metal wall panel
3. Low-E tinted glass.
4. Locally manufactured brick
5. Clear anodized aluminum window and curtain wall framing

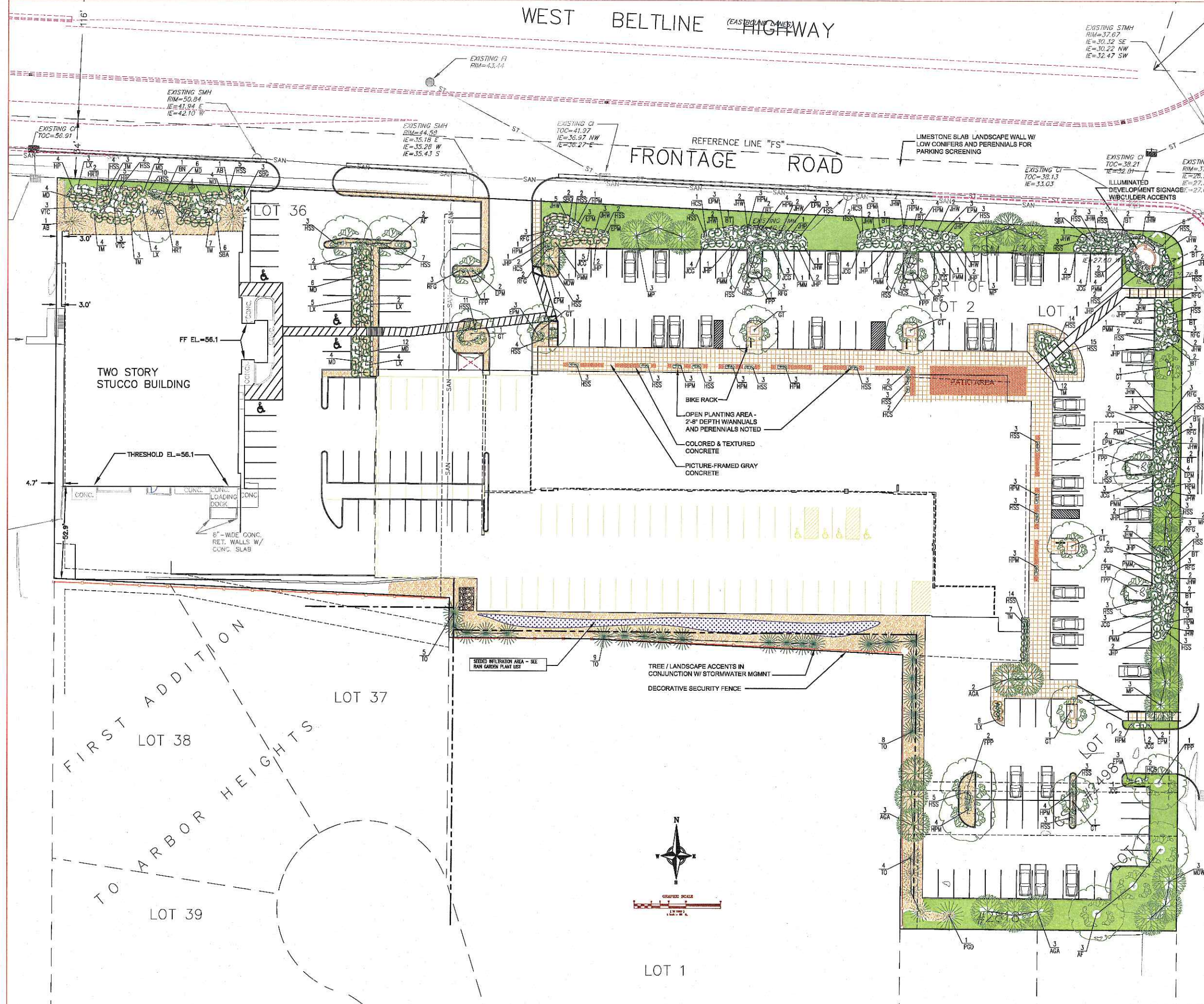


Landmark Gate

© POTTER LAWSON, INC. 11/22/05

Material Palette

WEST BELTLINE HIGHWAY (EAST BOUND LANE)



Potter Lawson
IDEAL BUILDERS

Consultants:
PIERCE ENGINEERS, Inc.
VIERBICHER ASSOCIATES
 Committed to Quality Service Since 1990
 RECEIVING - MASONRY - ROOFING - PLUMBING - ETC.
 800 Taylor St. Suite 201 Madison, WI 53703
 Phone: (608) 224-3822 Fax: (608) 224-5922

Notes:

Date	Issuance/Revisions	Symbol

LANDMARK GATE

TODD DRIVE AND THE BELTLINE

MADISON, WISCONSIN

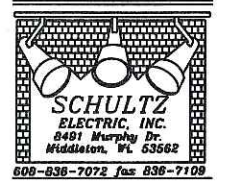
LANDMARK GATE, LLC

Drawing Title:
LANDSCAPE PLANTING PLAN

Drawing No.
 PCLE

Potter Lawson Architects

Consultants:



Notes:

11/25/03	PRELIMINARY	
Date	Revisions/Revisions	Symbol

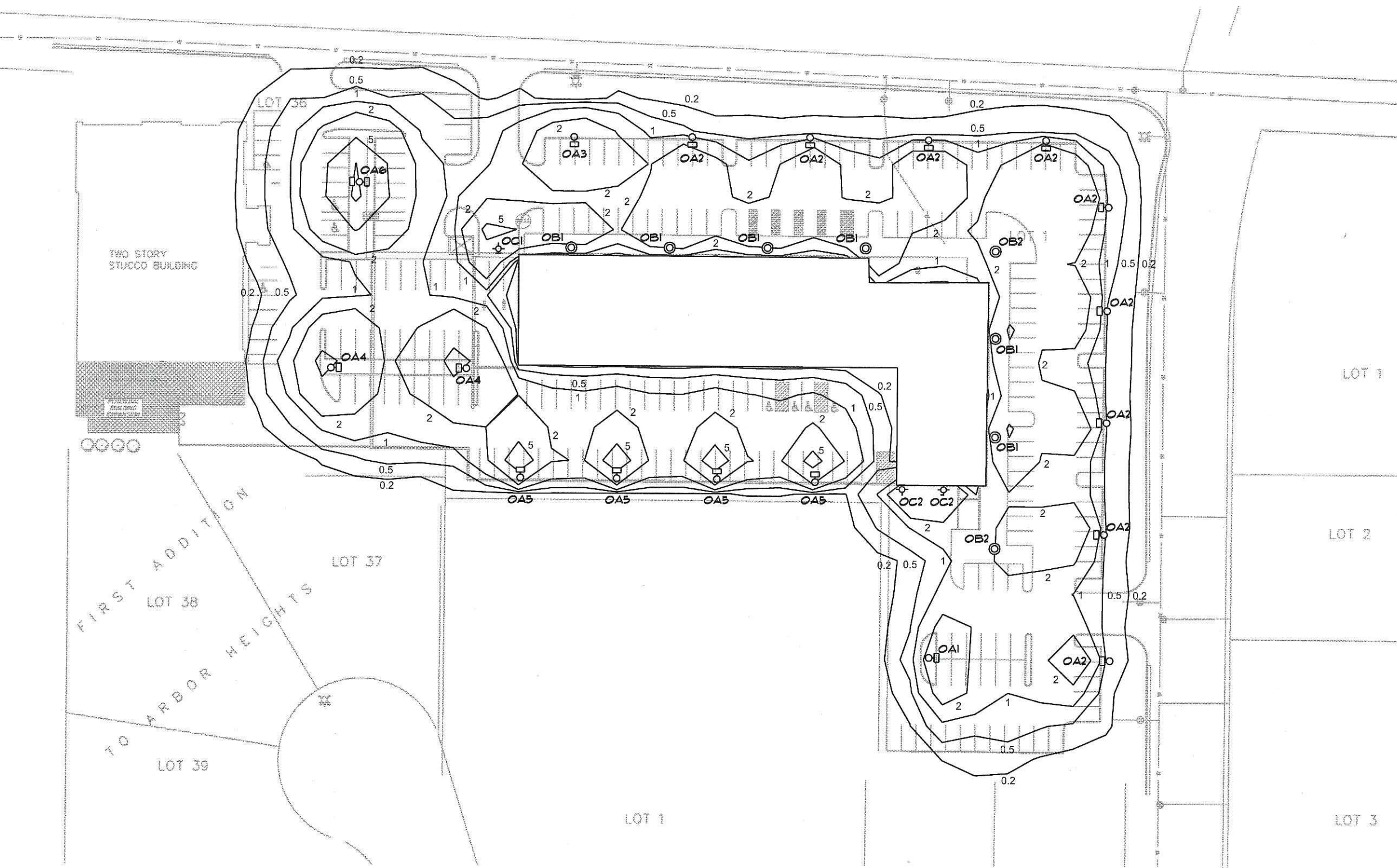
LANDMARK GATE

TODD DRIVE AND THE BELTLINE
MADISON, WISCONSIN

LANDMARK GATE, LLC

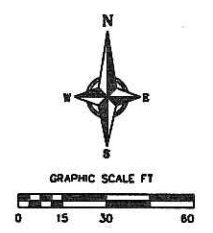
Drawing No. **ELECTRICAL SITE LIGHTING PLAN**

Drawing No. **ES-1**



LIGHTING FIXTURE SCHEDULE

TYPE	LIGHTING FIXTURE				LAMP DATA								NOTES
	DESCRIPTION	MANUFACTURER	CATALOG NO.	MOUNTING	CEILING TYPE	LENS	VOLT	NO.	WATT	TYPE	MANUFACTURER	CATALOG NO.	
OA1	SINGLE HEAD PARKING LOT FIXTURE	COOPER-NVME	V201-250-HP9-200-49-BK-15	POLE	NA	GLASS	200	1	250W	HP9	TBD	TBD	66x 26' POLE, 7' BASE, BLACK
OA2	SINGLE HEAD PARKING LOT FIXTURE	COOPER-NVME	V201-250-HP9-200-5L-BK	POLE	NA	GLASS	200	1	250W	HP9	TBD	TBD	66x 26' POLE, 7' BASE, BLACK
OA3	SINGLE HEAD PARKING LOT FIXTURE	COOPER-NVME	V201-250-HP9-200-35-BK-15	POLE	NA	GLASS	200	1	250W	HP9	TBD	TBD	66x 26' POLE, 7' BASE, BLACK
OA4	SINGLE HEAD PARKING LOT FIXTURE	COOPER-NVME	V201-250-HP9-200-49-BK	POLE	NA	GLASS	200	1	250W	HP9	TBD	TBD	66x 26' POLE, 7' BASE, BLACK
OA5	SINGLE HEAD PARKING LOT FIXTURE	COOPER-NVME	V201-250-HP9-200-5L-BK	POLE	NA	GLASS	200	1	250W	HP9	TBD	TBD	66x 26' POLE, 7' BASE, BLACK
OA6	DOUBLE HEAD PARKING LOT FIXTURE	COOPER-NVME	(7) V201-250-HP9-200-46-BK	POLE	NA	GLASS	200	1	250W	HP9	TBD	TBD	66x 26' POLE, 7' BASE, BLACK
OB1	SINGLE HEAD PARKING LOT FIXTURE	SELUX	842-115-1-850-BK-200-835-BC1	POLE	NA	REFRACTOR	200	1	850W	HP9	TBD	TBD	835 1/4' POLE, 3' BASE, BC1 BASE COVER BLACK
OB2	SINGLE HEAD PARKING LOT FIXTURE	SELUX	842-115-1-850-BK-200-835-BC1	POLE	NA	REFRACTOR	200	1	850W	HP9	TBD	TBD	835 1/4' POLE, 3' BASE, BC1 BASE COVER BLACK
OC1	BALL PACK	COOPER-LUMARK	HP-IP-1-10-200	WALL	NA	GLASS	200	1	100W	HP9	TBD	TBD	
OC2	BALL PACK	COOPER-LUMARK	HP-IP-1-10-200	WALL	NA	GLASS	200	1	100W	HP9	TBD	TBD	





ATTACHMENT NO. 1
LIGHTING DETAILS

Description

The classic lines and sophisticated construction of the Vision Site luminaire makes it an ideal complement to site design. The combination of smooth contours and sharp rear reveals allow the fixture to change character from different viewing angles while providing excellent low-glare photometrics. U.L. listed and CSA certified for wet locations.

Catalog #	VXM-250-HPS-208-4S-BK-HS	Type	OA1
Project	Landmark Gates	Date	11/30/2005
Comments			
Prepared by			

ORDERING INFORMATION

VXM-250-HPS-208-4S-BK-HS							
VXM	250	HPS	208	4S	BK	HS	
Product Family ¹	VXM: Vision Site Medium		Lamp Type	HPS: High Pressure Sodium		Optical System	4S: Type IV
Lamp Wattage	250: 250W		Voltage ²	208: 208V		Standard Color ³	BK: Black
						Options	HS: House Side Shield ⁴

- Notes: 1 Arms not included. See accessories.
 2 Products also available in non-US voltages and 50Hz for international markets. Consult factory for availability and ordering information.
 3 Custom and RAL color matching available upon request. Consult your INVUE Lighting Systems Representative for further information.
 4 House side shield not available on 5S and SL optics.

SPECIFICATION FEATURES

A ... Housing

One-piece, die-cast aluminum housing maintains a nominal 0.125" wall thickness. Integral reveal channels along top surface of housing promote heat extraction and prolonged electrical component life. Solid cast wall separates optical chamber from electrical area.

B ... Electrical Tray

Ballast and related electrical componentry are mounted to a reinforced one piece galvanized steel tray with integral handle. For ease of maintenance, tray hinges open via toolless release of one spring loaded latch. Electrical quick disconnects allow tray to be completely removed from housing providing ample hand and tool room for attachment of fixture during installation, and a safer servicing environment. Optional tray mounted fuse connections offer a distinct and easy to maintain alternative to common inline fuse connections.

C ... Door

One-piece die-cast aluminum door frame. Door frame opens via release of two flush mounted toolless latches. Tempered 1/8" thick clear glass lens seals to door with a weather-tight continuous gasket. Optical chamber is sealed against entry of dirt and moisture by a continuous door mounted gasket which firmly compresses against optical enclosure walls.

D ... Lens

Impact resistant 1/8" thick tempered clear flat glass.

E ... Optical Systems

Choice of five (5) efficiency segmented optical systems constructed of premium 95% reflective anodized aluminum sheet. Optical segments are rigidly mounted inside a thick gauge aluminum housing for superior protection. All segment faces are clean of rivet heads, tabs, or other means of attachment which may cause streaking in the light distribution. Optional high efficiency hydroformed reflectors available in VXM housing only in four (4) distributions patterns. All reflector modules feature toolless removal, quick disconnect wiring plugs, and are field rotatable in 90 degree increments. HID lamp sources in medium housing (VXM) optics feature mogul-base lampholders.

F ... Arm

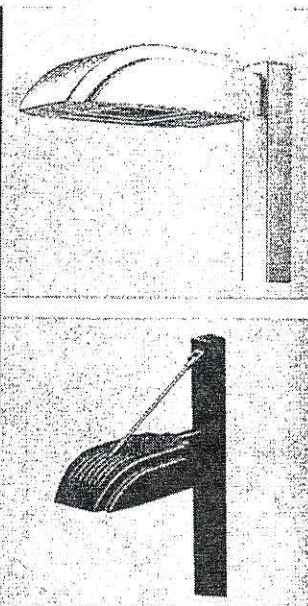
One-piece extruded rectangular arm available in standard 6" and 10" lengths. Internal bolt guides allow easy positioning of fixture during installation to pole or wall surface.

G ... Suspension Mount

Die-cast aluminum cleat factory mounted to luminaire and finished in luminaire color. Stainless steel structural rod measures 1/2" in diameter and is provided in luminaire finish color or optional natural finish. Product works in conjunction with accessory 10" arms. INVUE poles provided pre-drilled for suspension mount option. See INVUE pole brochure for a complete selection of matching poles.

H ... Finish

Housing and arm finished in a 5 stage premium TGIC polyester powder coat paint, 2.5 mil nominal thickness for superior protection against fade and wear. Standard colors include black, bronze, grey, white, dark platinum, and graphite metallic. RAL and custom color matches available. Consult your INVUE Lighting Systems Representative for more information.



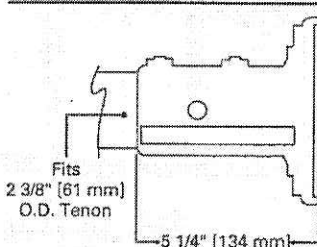
VXM Vision Site Medium

85-400W
 Metal Halide
 Pulse Start Metal Halide
 High Pressure Sodium
 Compact Fluorescent
 Electrodeless Fluorescent

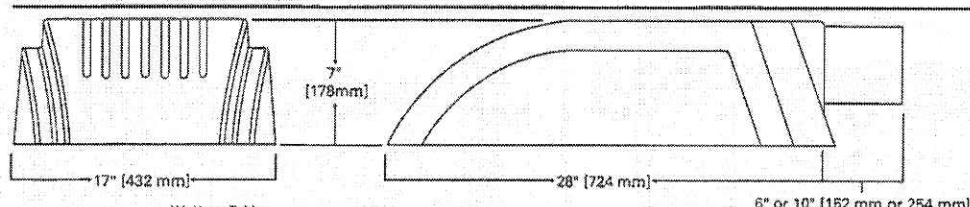
Architectural Area Luminaire

DARK SKY COMPLIANT FCO Full Cutoff

Mounting Options - Mast Arm Adapter



Dimensions



Wattage Table

	VXM
Metal Halide	175, 250, 400W
Pulse Start Metal Halide	250, 320, 350, 400W
High Pressure Sodium	150, 250, 400W
Compact Fluorescent	(2) 57, (2) 70W
Electrodeless Fluorescent	85W

Certifications

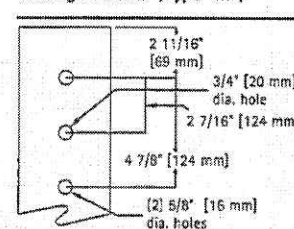
36 Vibration Tested		
IP54 Rated	U.L. 1598 Listed	FCO Full Cutoff
CSA Listed	40°C Ambient ISO 9001	

Shipping DATA (approx.)

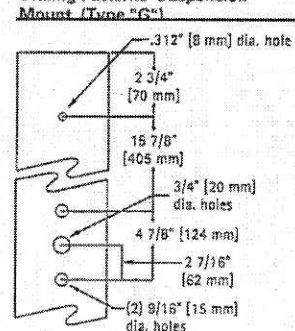
Net Weight (lbs.): 51
 Volume (cu. ft): 3.18

AVU032306

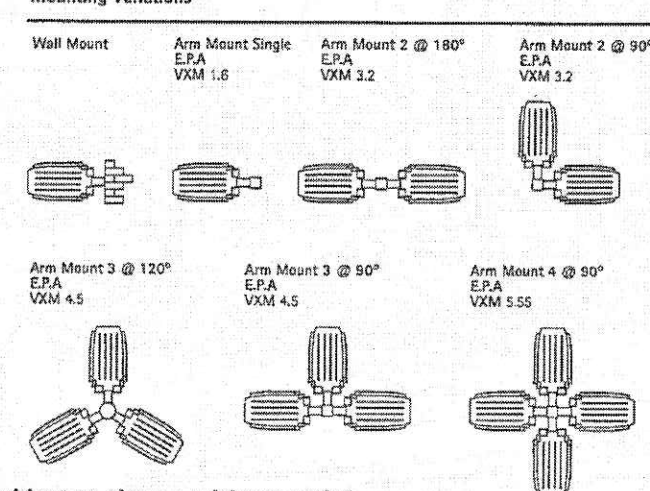
Drilling Patterns (Type "M")



Drilling Patterns Suspension Mount (Type "G")



Mounting Variations



Specifications and Dimensions subject to change without notice.
 Invue • Customer First Center • 1121 Highway 74 South • Peachtree City, GA 30269 • TEL 770.486.4800 • FAX 770.486.4801

AVU032306

INVUE™

Description

The classic lines and sophisticated construction of the Vision Site luminaire makes it an ideal complement to site design. The combination of smooth contours and sharp rear reveals allow the fixture to change character from different viewing angles while providing excellent low-glare photometrics. U.L. listed and CSA certified for wet locations.

Catalog #	VXM-250-HPS-208-SL-BK	Type	OA2
Project	Landmark Gate	Date	11/30/2005
Comments			
Prepared by			

ORDERING INFORMATION

VXM-250-HPS-208-SL-BK					
VXM	250	HPS	208	SL	BK
Product Family VXM: Vision Site Medium		Lamp Type HPS: High Pressure Sodium		Optical System SL: Forward Throw w/ Spill Light Eliminator	
Lamp Wattage 250: 250W		Voltage 208: 208V		Standard Color BK: Black	

- Notes: 1 Arms not included. See accessories.
 2 Products also available in non-US voltages and 50Hz for international markets. Consult factory for availability and ordering information.
 3 Custom and RAL color matching available upon request. Consult your INVUE Lighting Systems Representative for further information.

SPECIFICATION FEATURES

A ... Housing

One-piece, die-cast aluminum housing maintains a nominal 0.125" wall thickness. Integral reveal channels along top surface of housing promote heat extraction and prolonged electrical component life. Solid cast wall separates optical chamber from electrical area.

B ... Electrical Tray

Ballast and related electrical componentry are mounted to a reinforced one piece galvanized steel tray with integral handle. For ease of maintenance, tray hinges open via toolless release of one spring loaded latch. Electrical quick disconnects allow tray to be completely removed from housing providing ample hand and tool room for attachment of fixture during installation, and a safer servicing environment. Optional tray mounted fuse connections offer a distinct and easy to maintain alternative to common inline fuse connections.

C ... Door

One-piece die-cast aluminum door frame. Door opens via release of two flush mounted toolless latches. Tempered 1/8" thick clear glass lens seals to door with a weather-tight continuous gasket. Optical chamber is sealed against entry of dirt and moisture by a continuous door mounted gasket which firmly compresses against optical enclosure walls.

D ... Lens

Impact resistant 1/8" thick tempered clear flat glass.

E ... Optical Systems

Choice of five (5) efficiency segmented optical systems constructed of premium 95% reflective anodized aluminum sheet. Optical segments are rigidly mounted inside a thick gauge aluminum housing for superior protection. All segment faces are clean of rivet heads, tabs, or other means of attachment which may cause streaking in the light distribution. Optional high efficiency hydroformed reflectors available in VXM housing only in four (4) distributions patterns. All reflector modules feature toolless removal, quick disconnect wiring plugs, and are field rotatable in 90 degree increments. HID lamp sources in medium housing (VXM) optics feature mogul-base lampholders.

F ... Arm

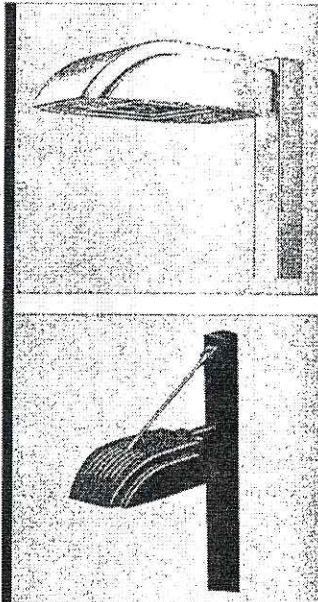
One-piece extruded rectangular arm available in standard 6" and 10" lengths. Internal bolt guides allow easy positioning of fixture during installation to pole or wall surface.

G ... Suspension Mount

Die-cast aluminum cleat factory mounted to luminaire and finished in luminaire color. Stainless steel structural rod measures 1/2" in diameter and is provided in luminaire finish color or optional natural finish. Product works in conjunction with accessory 10" arms. INVUE poles provided pre-drilled for suspension mount option. See INVUE pole brochure for a complete selection of matching poles.

H ... Finish

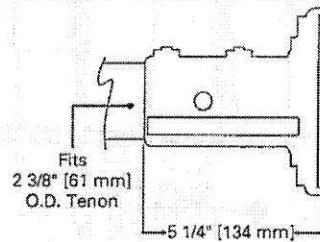
Housing and arm finished in a 5 stage premium TGIC polyester powder coat paint, 2.5 mil nominal thickness for superior protection against fade and wear. Standard colors include black, bronze, grey, white, dark platinum, and graphite metallic. RAL and custom color matches available. Consult your INVUE Lighting Systems Representative for more information.



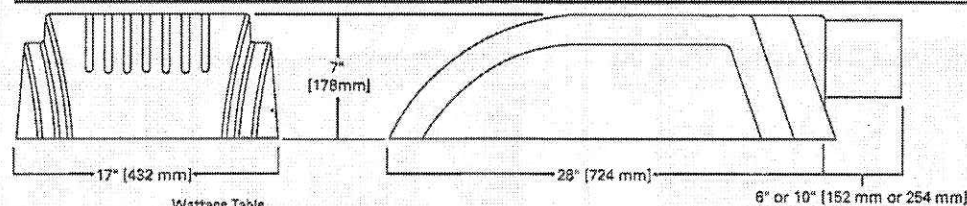
VXM Vision Site Medium

85-400W
 Metal Halide
 Pulse Start Metal Halide
 High Pressure Sodium
 Compact Fluorescent
 Electrodeless Fluorescent
Architectural Area Luminaire

Mounting Options - Mast Arm Adapter



Dimensions



Wattage Table

	VXM
Metal Halide	175, 250, 400W
Pulse Start Metal Halide	250, 320, 350, 400W
High Pressure Sodium	150, 250, 400W
Compact Fluorescent	(2) 57, (2) 70W
Electrodeless Fluorescent	85W

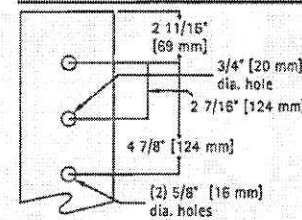
Certifications

3G Vibration Tested			
IP54 Rated	U.L. 1598 Listed		FCO Full Cutoff
CSA Listed	40°C Ambient	ISO 9001	

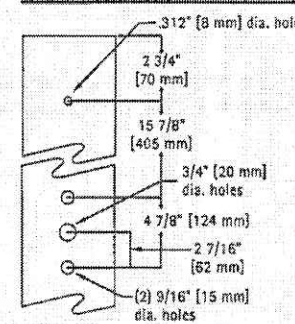
Shipping DATA (approx.)
 Net Weight (lbs.): 51
 Volume (cu. ft.): 3.18

DARK SKY COMPLIANT FCO Full Cutoff

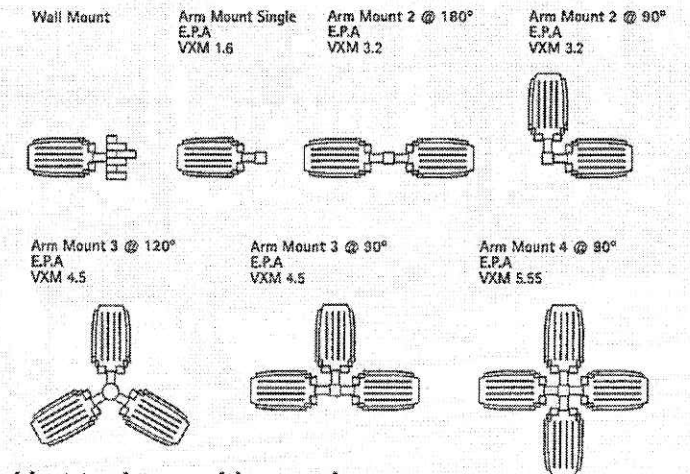
Drilling Patterns (Type "M")



Drilling Patterns Suspension Mount (Type "G")



Mounting Variations



Description

The classic lines and sophisticated construction of the Vision Site luminaire makes it an ideal complement to site design. The combination of smooth contours and sharp rear reveals allow the fixture to change character from different viewing angles while providing excellent low-glare photometrics. U.L. listed and CSA certified for wet locations.

Catalog #	VXM-250-HPS-208-3S-BK-HS	Type	OA3
Project	Landmark Gate	Date	11/30/2005
Comments			
Prepared by			

ORDERING INFORMATION

VXM-250-HPS-208-3S-BK-HS						
VXM	250	HPS	208	3S	BK	HS
Product Family ¹	Lamp Type		Optical System		Options	
VXM: Vision Site Medium	HPS: High Pressure Sodium		3S: Type III		HS: House Side Shield ⁴	
Lamp Wattage	Voltage ²		Standard Color ³			
250: 250W	208: 208V		BK: Black			

- Notes: 1 Arms not included. See accessories.
 2 Products also available in non-US voltages and 50Hz for international markets. Consult factory for availability and ordering information.
 3 Custom and RAL color matching available upon request. Consult your INVUE Lighting Systems Representative for further information.
 4 House side shield not available on 5S and SL optics.

SPECIFICATION FEATURES

A ... Housing

One-piece, die-cast aluminum housing maintains a nominal 0.125" wall thickness. Integral reveal channels along top surface of housing promote heat extraction and prolonged electrical component life. Solid cast wall separates optical chamber from electrical area.

B ... Electrical Tray

Ballast and related electrical componentry are mounted to a reinforced one piece galvanized steel tray with integral handle. For ease of maintenance, tray hinges open via toolless release of one spring loaded latch. Electrical quick disconnects allow tray to be completely removed from housing providing ample hand and tool room for attachment of fixture during installation, and a safer servicing environment. Optional tray mounted fuse connections offer a distinct and easy to maintain alternative to common inline fuse connections.

C ... Door

One-piece die-cast aluminum door frame. Door frame opens via release of two flush mounted toolless latches. Tempered 1/8" thick clear glass lens seals to door with a weather-tight continuous gasket. Optical chamber is sealed against entry of dirt and moisture by a continuous door mounted gasket which firmly compresses against optical enclosure walls.

D ... Lens

Impact resistant 1/8" thick tempered clear flat glass.

E ... Optical Systems

Choice of five (5) efficiency segmented optical systems constructed of premium 95% reflective anodized aluminum sheet. Optical segments are rigidly mounted inside a thick gauge aluminum housing for superior protection. All segment faces are clean of rivet heads, tabs, or other means of attachment which may cause streaking in the light distribution. Optional high efficiency hydroformed reflectors available in VXM housing only in four (4) distributions patterns. All reflector modules feature toolless removal, quick disconnect wiring plugs, and are field rotatable in 90 degree increments. HID lamp sources in medium housing (VXM) optics feature mogul-base lampholders.

F ... Arm

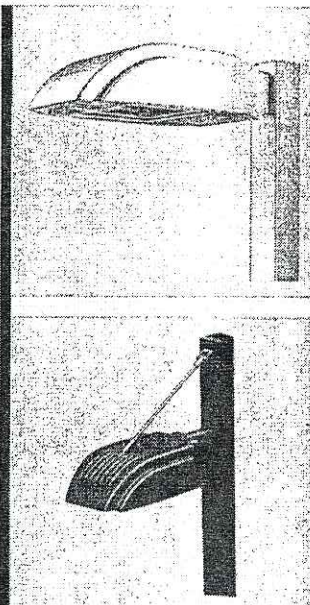
One-piece extruded rectangular arm available in standard 6" and 10" lengths. Internal bolt guides allow easy positioning of fixture during installation to pole or wall surface.

G ... Suspension Mount

Die-cast aluminum cleat factory mounted to luminaire and finished in luminaire color. Stainless steel structural rod measures 1/2" in diameter and is provided in luminaire finish color or optional natural finish. Product works in conjunction with accessory 10" arms. INVUE poles provided pre-drilled for suspension mount option. See INVUE pole brochure for a complete selection of matching poles.

H ... Finish

Housing and arm finished in a 5 stage premium TGIC polyester powder coat paint, 2.5 mil nominal thickness for superior protection against fade and wear. Standard colors include black, bronze, grey, white, dark platinum, and graphite metallic. RAL and custom color matches available. Consult your INVUE Lighting Systems Representative for more information.

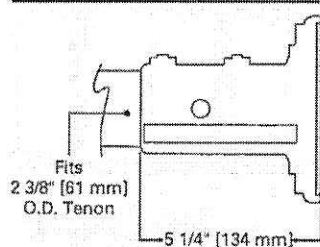


VXM Vision Site Medium

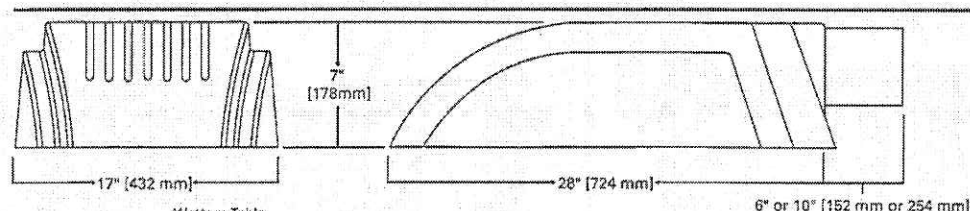
85-400W
 Metal Halide
 Pulse Start Metal Halide
 High Pressure Sodium
 Compact Fluorescent
 Electrodeless Fluorescent
Architectural Area Luminaire

DARK SKY COMPLIANT FCO Full Cutoff

Mounting Options - Mast Arm Adapter



Dimensions



Wattage Table

	VXM
Metal Halide	175, 250, 400W
Pulse Start Metal Halide	250, 320, 350, 400W
High Pressure Sodium	150, 250, 400W
Compact Fluorescent	(2) 57, (2) 70W
Electrodeless Fluorescent	85W

Certifications

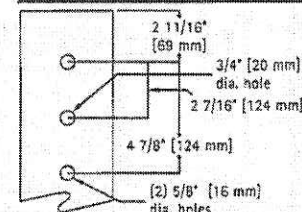
3G Vibration Tested		
IP54 Rated	U.L. 1598 Listed	
CSA Listed	40°C Ambient	ISO 9001

FCO Full Cutoff

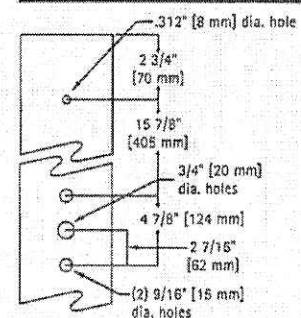
Shipping DATA (approx.)
 Net Weight (lbs.): 51
 Volume (cu. ft.): 3.18

AVU032306

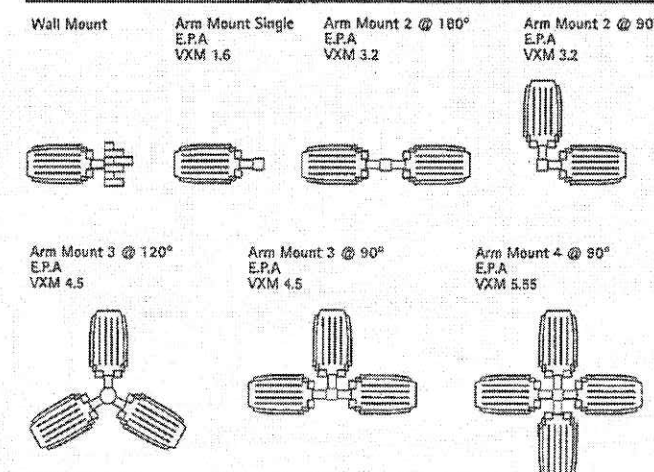
Drilling Patterns (Type "M")



Drilling Patterns Suspension Mount (Type "G")



Mounting Variations



AVU032306

Description

The classic lines and sophisticated construction of the Vision Site luminaire makes it an ideal complement to site design. The combination of smooth contours and sharp rear reveals allow the fixture to change character from different viewing angles while providing excellent low-glare photometrics. U.L. listed and CSA certified for wet locations.

Catalog #	VXM-250-HPS-208-4S-BK	Type	OA4
Project	Landmark Gate	Date	11/30/2005
Comments			
Prepared by			

SPECIFICATION FEATURES

A ... Housing

One-piece, die-cast aluminum housing maintains a nominal 0.125" wall thickness. Integral reveal channels along top surface of housing promote heat extraction and prolonged electrical component life. Solid cast wall separates optical chamber from electrical area.

B ... Electrical Tray

Ballast and related electrical componentry are mounted to a reinforced one piece galvanized steel tray with integral handle. For ease of maintenance, tray hinges open via toolless release of one spring loaded latch. Electrical quick disconnects allow tray to be completely removed from housing providing ample hand and tool room for attachment of fixture during installation, and a safer servicing environment. Optional tray mounted fuse connections offer a distinct and easy to maintain alternative to common inline fuse connections.

C ... Door

One-piece die-cast aluminum door frame. Door opens via release of two flush mounted toolless latches. Tempered 1/8" thick clear glass lens seals to door with a weather-tight continuous gasket. Optical chamber is sealed against entry of dirt and moisture by a continuous door mounted gasket which firmly compresses against optical enclosure walls.

D ... Lens

Impact resistant 1/8" thick tempered clear flat glass.

E ... Optical Systems

Choice of five (5) efficiency segmented optical systems constructed of premium 95% reflective anodized aluminum sheet. Optical segments are rigidly mounted inside a thick gauge aluminum housing for superior protection. All segment faces are clean of rivet heads, tabs, or other means of attachment which may cause streaking in the light distribution. Optional high efficiency hydroformed reflectors available in VXM housing only in four (4) distributions patterns. All reflector modules feature toolless removal, quick disconnect wiring plugs, and are field rotatable in 90 degree increments. HID lamp sources in medium housing (VXM) optics feature mogul-base lampholders.

F ... Arm

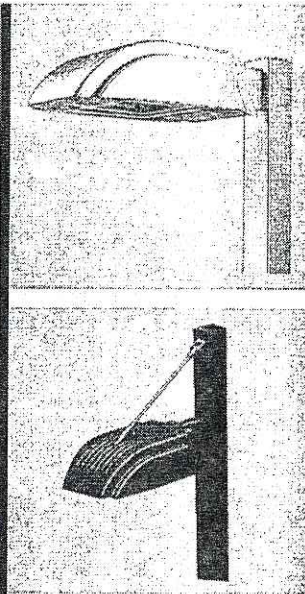
One-piece extruded rectangular arm available in standard 6" and 10" lengths. Internal bolt guides allow easy positioning of fixture during installation to pole or wall surface.

G ... Suspension Mount

Die-cast aluminum cleat factory mounted to luminaire and finished in luminaire color. Stainless steel structural rod measures 1/2" in diameter and is provided in luminaire finish color or optional natural finish. Product works in conjunction with accessory 10" arms. INVUE poles provided pre-drilled for suspension mount option. See INVUE pole brochure for a complete selection of matching poles.

H ... Finish

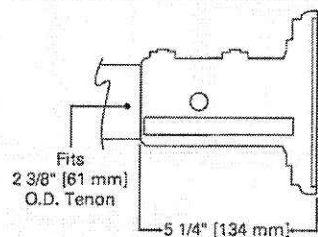
Housing and arm finished in a 5 stage premium TGIC polyester powder coat paint, 2.5 mil nominal thickness for superior protection against fade and wear. Standard colors include black, bronze, grey, white, dark platinum, and graphite metallic. RAL and custom color matches available. Consult your INVUE Lighting Systems Representative for more information.



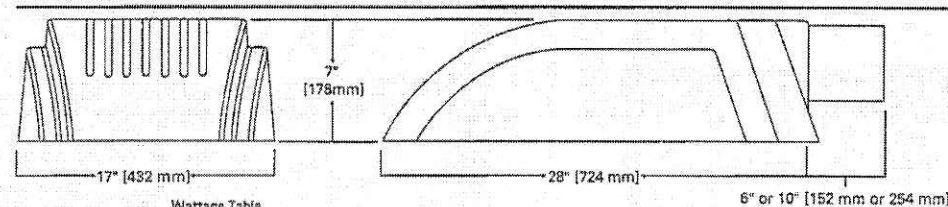
VXM Vision Site Medium

85-400W
Metal Halide
Pulse Start Metal Halide
High Pressure Sodium
Compact Fluorescent
Electrodeless Fluorescent
Architectural Area
Luminaire

Mounting Options - Mast Arm Adapter



Dimensions



Wattage Table

	VXM
Metal Halide	175, 250, 400W
Pulse Start Metal Halide	250, 320, 350, 400W
High Pressure Sodium	150, 250, 400W
Compact Fluorescent	(2) 57, (2) 70W
Electrodeless Fluorescent	85W

Certifications

3G Vibration Tested			FCO Full Cutoff
IP54 Rated	U.L. 1598 Listed		
CSA Listed	40°C Ambient	ISO 9001	

Shipping DATA (approx.)
Net Weight (lbs.): 51
Volume (cu. ft.): 3.18

AVU032306

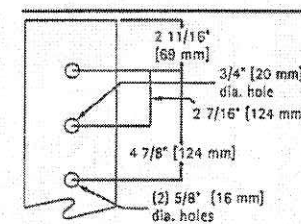
ORDERING INFORMATION

VXM-250-HPS-208-4S-BK					
VXM	250	HPS	208	4S	BK
Product Family ¹ VXM: Vision Site Medium	Lamp Type HPS: High Pressure Sodium		Optical System 4S: Type IV		
Lamp Wattage 250: 250W	Voltage ² 208: 208V		Standard Color ³ BK: Black		

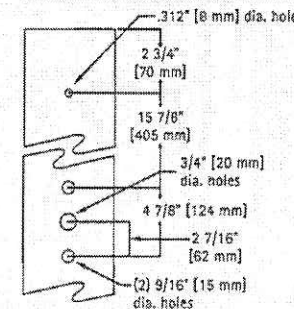
- Notes: 1 Arms not included. See accessories.
2 Products also available in non-US voltages and 50Hz for international markets. Consult factory for availability and ordering information.
3 Custom and RAL color matching available upon request. Consult your INVUE Lighting Systems Representative for further information.

DARK SKY COMPLIANT FCO Full Cutoff

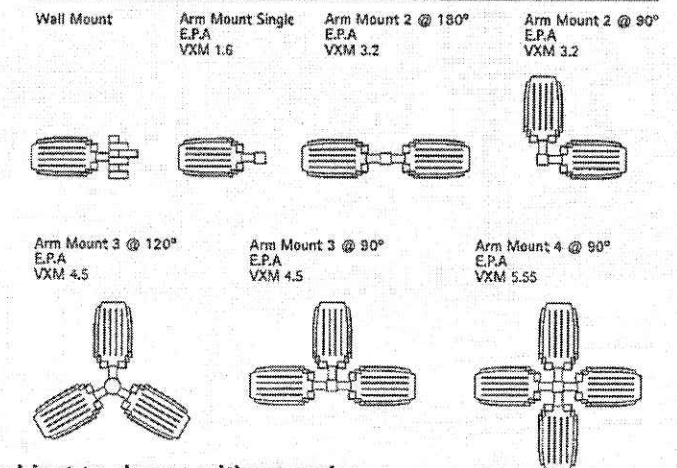
Drilling Patterns (Type "M")



Drilling Patterns Suspension Mount (Type "G")



Mounting Variations



Specifications and Dimensions subject to change without notice.

Invue • Customer First Center • 1121 Highway 74 South • Peachtree City, GA 30269 • TEL 770.486.4800 • FAX 770.486.4801

AVU032306

Description

The classic lines and sophisticated construction of the Vision Site luminaire makes it an ideal complement to site design. The combination of smooth contours and sharp rear reveals allow the fixture to change character from different viewing angles while providing excellent low-glare photometrics. U.L. listed and CSA certified for wet locations.

Catalog #	VXM-150-HPS-208-SL-BK	Type	OA5
Project	Landmark Gate	Date	11/30/2005
Comments			
Prepared by			

SPECIFICATION FEATURES

A ... Housing

One-piece, die-cast aluminum housing maintains a nominal 0.125" wall thickness. Integral reveal channels along top surface of housing promote heat extraction and prolonged electrical component life. Solid cast wall separates optical chamber from electrical area.

B ... Electrical Tray

Ballast and related electrical componentry are mounted to a reinforced one piece galvanized steel tray with integral handle. For ease of maintenance, tray hinges open via toolless release of one spring loaded latch. Electrical quick disconnects allow tray to be completely removed from housing providing ample hand and tool room for attachment of fixture during installation, and a safer servicing environment. Optional tray mounted fuse connections offer a distinct and easy to maintain alternative to common inline fuse connections.

C ... Door

One-piece die-cast aluminum door frame. Door frame opens via release of two flush mounted toolless latches. Tempered 1/8" thick clear glass lens seals to door with a weather-tight continuous gasket. Optical chamber is sealed against entry of dirt and moisture by a continuous door mounted gasket which firmly compresses against optical enclosure walls.

D ... Lens

Impact resistant 1/8" thick tempered clear flat glass.

E ... Optical Systems

Choice of five (5) efficiency segmented optical systems constructed of premium 95% reflective anodized aluminum sheet. Optical segments are rigidly mounted inside a thick gauge aluminum housing for superior protection. All segment faces are clean of rivet heads, tabs, or other means of attachment which may cause streaking in the light distribution. Optional high efficiency hydroformed reflectors available in VXM housing only in four (4) distributions patterns. All reflector modules feature toolless removal, quick disconnect wiring plugs, and are field rotatable in 90 degree increments. HID lamp sources in medium housing (VXM) optics feature mogul-base lampholders.

F ... Arm

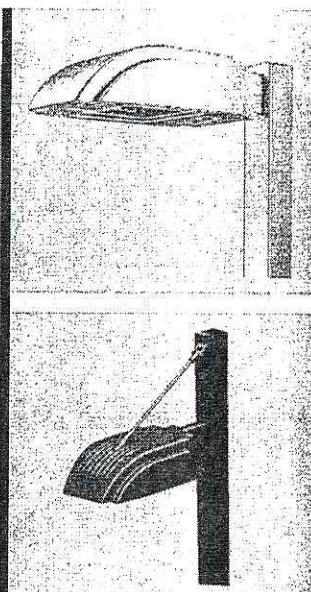
One-piece extruded rectangular arm available in standard 6" and 10" lengths. Internal bolt guides allow easy positioning of fixture during installation to pole or wall surface.

G ... Suspension Mount

Die-cast aluminum cleat factory mounted to luminaire and finished in luminaire color. Stainless steel structural rod measures 1/2" in diameter and is provided in luminaire finish color or optional natural finish. Product works in conjunction with accessory 10" arms. INVUE poles provided pre-drilled for suspension mount option. See INVUE pole brochure for a complete selection of matching poles.

H ... Finish

Housing and arm finished in a 5 stage premium TGIC polyester powder coat paint, 2.5 mil nominal thickness for superior protection against fade and wear. Standard colors include black, bronze, grey, white, dark platinum, and graphite metallic. RAL and custom color matches available. Consult your INVUE Lighting Systems Representative for more information.



VXM Vision Site Medium

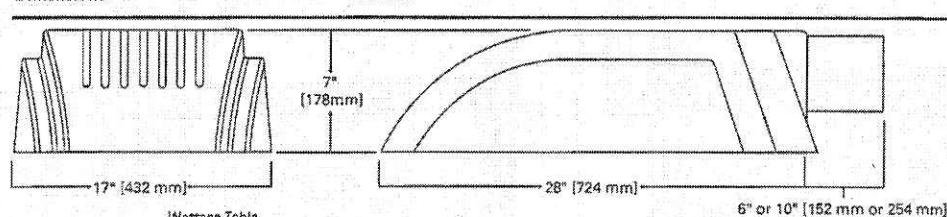
85-400W

Metal Halide
Pulse Start Metal Halide
High Pressure Sodium
Compact Fluorescent
Electrodeless Fluorescent

Architectural Area Luminaire

DARK SKY COMPLIANT FCO Full Cutoff

Dimensions



Wattage Table

	VXM
Metal Halide	175, 250, 400W
Pulse Start Metal Halide	250, 320, 350, 400W
High Pressure Sodium	150, 250, 400W
Compact Fluorescent	(2) 57, (2) 70W
Electrodeless Fluorescent	85W

Certifications

3G Vibration Tested			
IP54 Rated	U.L. 1598 Listed		FCO Full Cutoff
CSA Listed	40°C Ambient	ISO 9001	

Shipping DATA (approx.)
Net Weight (lbs.): 51
Volume (cu. ft): 3.18

AVU032306

ORDERING INFORMATION

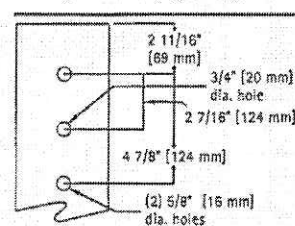
VXM-150-HPS-208-SL-BK

VXM	150	HPS	208	SL	BK
-----	-----	-----	-----	----	----

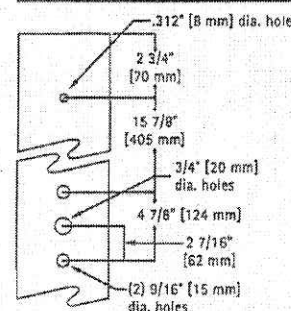
Product Family ¹ VXM: Vision Site Medium	Lamp Type HPS: High Pressure Sodium	Optical System SL: Forward Throw w/ Spill Light Eliminator
Lamp Wattage 150: 150W	Voltage ² 208: 208V	Standard Color ³ BK: Black

- Notes: 1 Arms not included. See accessories.
2 Products also available in non-US voltages and 50Hz for international markets. Consult factory for availability and ordering information.
3 Custom and RAL color matching available upon request. Consult your INVUE Lighting Systems Representative for further information.

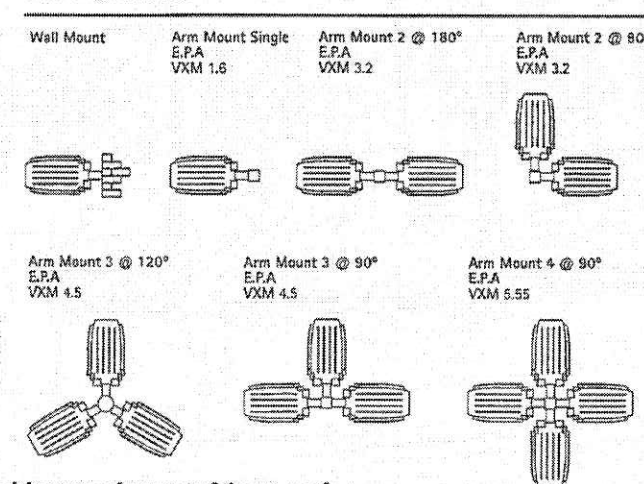
Drilling Patterns (Type "M")



Drilling Patterns Suspension Mount (Type "G")



Mounting Variations



Specifications and Dimensions subject to change without notice.

Invue • Customer First Center • 1121 Highway 74 South • Peachtree City, GA 30269 • TEL 770.486.4800 • FAX 770.486.4801

AVU032306

Description

The classic lines and sophisticated construction of the Vision Site luminaire makes it an ideal complement to site design. The combination of smooth contours and sharp rear reveals allow the fixture to change character from different viewing angles while providing excellent low-glare photometrics. U.L. listed and CSA certified for wet locations.

Catalog #	VXM-250-HPS-208-4S-BK	Type	OA6
Project	Landmark Gate	Date	11/30/2005
Comments	Double Head Fixture		
Prepared by			

SPECIFICATION FEATURES

A ... Housing

One-piece, die-cast aluminum housing maintains a nominal 0.125" wall thickness. Integral reveal channels along top surface of housing promote heat extraction and prolonged electrical component life. Solid cast wall separates optical chamber from electrical area.

B ... Electrical Tray

Ballast and related electrical componentry are mounted to a reinforced one piece galvanized steel tray with integral handle. For ease of maintenance, tray hinges open via toolless release of one spring loaded latch. Electrical quick disconnects allow tray to be completely removed from housing providing ample hand and tool room for attachment of fixture during installation, and a safer servicing environment. Optional tray mounted fuse connections offer a distinct and easy to maintain alternative to common inline fuse connections.

C ... Door

One-piece die-cast aluminum door frame. Door opens via release of two flush mounted toolless latches. Tempered 1/8" thick clear glass lens seals to door with a weather-tight continuous gasket. Optical chamber is sealed against entry of dirt and moisture by a continuous door mounted gasket which firmly compresses against optical enclosure walls.

D ... Lens

Impact resistant 1/8" thick tempered clear flat glass.

E ... Optical Systems

Choice of five (5) efficiency segmented optical systems constructed of premium 95% reflective anodized aluminum sheet. Optical segments are rigidly mounted inside a thick gauge aluminum housing for superior protection. All segment faces are clean of rivet heads, tabs, or other means of attachment which may cause streaking in the light distribution. Optional high efficiency hydroformed reflectors available in VXM housing only in four (4) distributions patterns. All reflector modules feature toolless removal, quick disconnect wiring plugs, and are field rotatable in 90 degree increments. HID lamp sources in medium housing (VXM) optics feature mogul-base lampholders.

F ... Arm

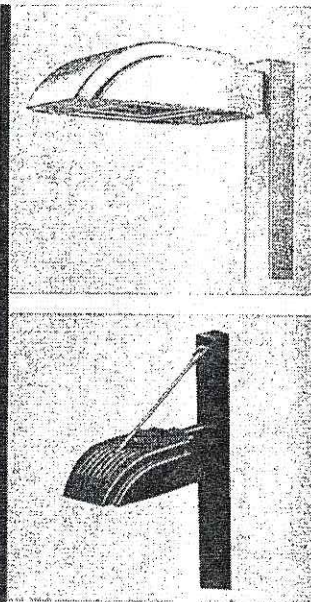
One-piece extruded rectangular arm available in standard 6" and 10" lengths. Internal bolt guides allow easy positioning of fixture during installation to pole or wall surface.

G ... Suspension Mount

Die-cast aluminum cleat factory mounted to luminaire and finished in luminaire color. Stainless steel structural rod measures 1/2" in diameter and is provided in luminaire finish color or optional natural finish. Product works in conjunction with accessory 10" arms. INVUE poles provided pre-drilled for suspension mount option. See INVUE pole brochure for a complete selection of matching poles.

H ... Finish

Housing and arm finished in a 5 stage premium TGIC polyester powder coat paint, 2.5 mil nominal thickness for superior protection against fade and wear. Standard colors include black, bronze, grey, white, dark platinum, and graphite metallic. RAL and custom color matches available. Consult your INVUE Lighting Systems Representative for more information.



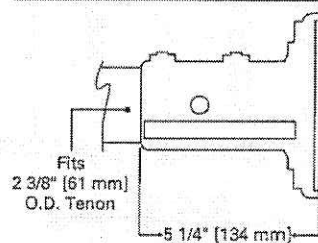
VXM Vision Site Medium

85-400W
Metal Halide
Pulse Start Metal Halide
High Pressure Sodium
Compact Fluorescent
Electrodeless Fluorescent

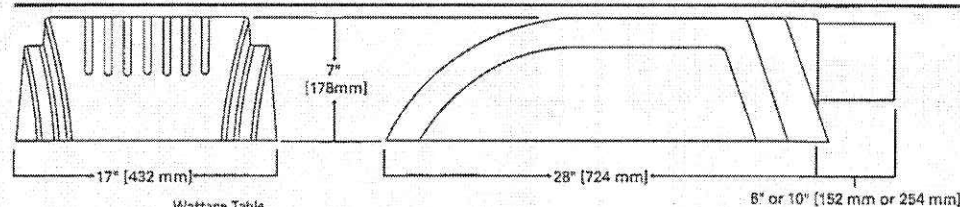
Architectural Area Luminaire

DARK SKY COMPLIANT FCO Full Cutoff

Mounting Options - Mast Arm Adapter



Dimensions



Wattage Table

	VXM
Metal Halide	175, 250, 400W
Pulse Start Metal Halide	250, 320, 350, 400W
High Pressure Sodium	150, 250, 400W
Compact Fluorescent	(2) 57, (2) 70W
Electrodeless Fluorescent	85W

Certifications

3G Vibration Tested		
IP54 Rated	U.L. 1698 Listed	FCO Full Cutoff
CSA Listed	40°C Ambient ISO 9001	

Shipping DATA (approx.)
Net Weight (lbs.): 51
Volume (cu. ft): 3.18

AVU032306

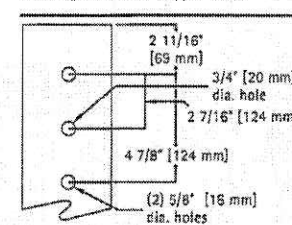
ORDERING INFORMATION

VXM-250-HPS-208-4S-BK

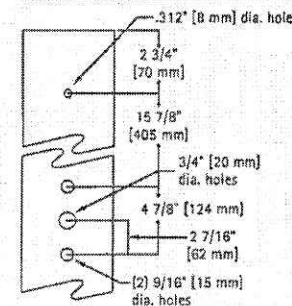
VXM	250	HPS	208	4S	BK
Product Family ¹	VXM: Vision Site Medium		Lamp Type	HPS: High Pressure Sodium	
Lamp Wattage	250: 250W		Voltage ²	208: 208V	
			Optical System	4S: Type IV	
			Standard Color ³	BK: Black	

- Notes: 1 Arms not included. See accessories.
2 Products also available in non-US voltages and 50Hz for international markets. Consult factory for availability and ordering information.
3 Custom and RAL color matching available upon request. Consult your INVUE Lighting Systems Representative for further information.

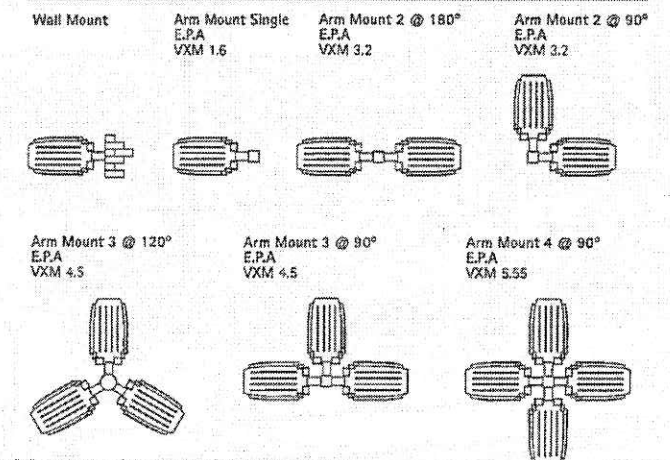
Drilling Patterns (Type "M")



Drilling Patterns Suspension Mount (Type "G")



Mounting Variations



Specifications and Dimensions subject to change without notice.
Invue • Customer First Center • 1121 Highway 74 South • Peachtree City, GA 30269 • TEL 770.486.4800 • FAX 770.486.4801

AVU032306

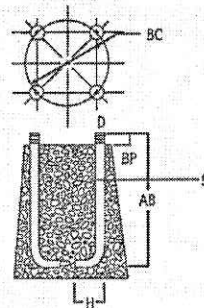
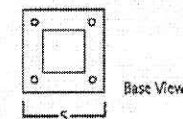
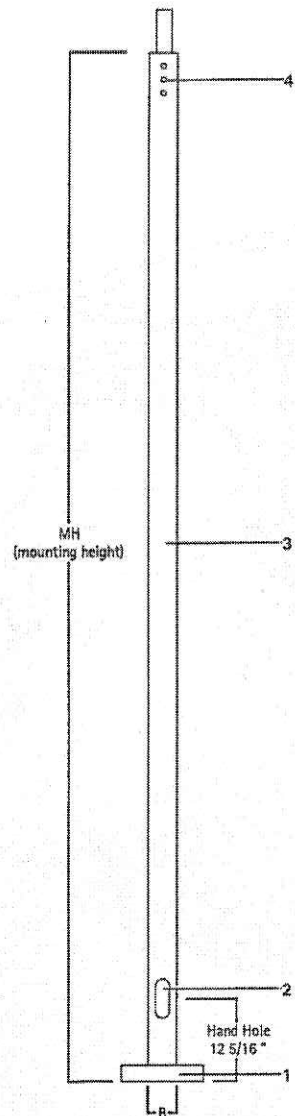
SSX=STEEL SQUARE STRAIGHT

10'-39' Mounting Height

SSX=ORDERING INFORMATION

SPECIFICATION FEATURES

- 1 ASTM Grade steel base plate with ASTM A366 base cover.
- 2 Hand hole assembly 3" x 5" on 5" and 6" pole; and 2" x 4" on 4" pole.
- 3 ASTM A500 grade "B" steel shaft. Shot blasted and painted with premium TGIC polyester powder coat.
- 4 Drilled or Tenon (specify).
- 5 Anchor bolt per ASTM A576 with (2) nuts, (2) flat washer, and (1) lock washer. Nuts, washers and threaded portion of bolt are hot dip galvanized. 3" hook for 3/4" bolt. 4" hook for 1" bolt.



POLE COMPATIBILITY MATRIX	DRILL PATTERN	EPA + MOUNTING CONFIGURATIONS					
		Single w/Arm	2 @ 180°	2 @ 90°	3 @ 90°	3 @ 120°	4 @ 90°
PRODUCT	TENON	[1]	[2]	[6]	[3]	[6]	[4]
ICON SMALL	A	0.69	1.38	1.38	1.84	1.84	2.07
ICON MEDIUM	C	1.09	2.18	2.18	2.88	2.86	3.20
ICON SMALL STRUCTURAL MOUNT	J	0.71	1.42	1.42	1.90	1.90	2.14
ICON MEDIUM STRUCTURAL MOUNT	K	1.11	2.22	2.22	2.92	2.92	3.27
VISION SMALL	E	1.27	2.54	2.54	3.60	3.60	4.13
VISION MEDIUM	M	1.6	3.20	3.20	4.50	4.50	5.55
VISION SMALL STRUCTURAL MOUNT	F	1.28	2.56	2.56	3.63	3.63	4.17
VISION MEDIUM STRUCTURAL MOUNT	G	1.82	3.64	3.64	4.96	4.96	5.62
ASCENT SMALL	A	0.85	1.70	1.70	2.35	2.35	2.68
ASCENT MEDIUM	C	1.35	2.70	2.70	3.83	3.83	4.56
STRUT SMALL	A	1.03	2.06	2.06	2.89	2.89	3.49
STRUT MEDIUM	C	1.64	3.28	3.28	4.70	4.70	5.77
X-FORM SMALL	E	1.15	2.30	2.30	3.20	3.20	3.81
X-FORM MEDIUM	M	2.1	4.20	4.20	6.00	6.00	7.50

FOUR BOLT ANCHORAGE [see ordering information]

- BC=Bolt Circle
- PB=Bolt Projection
- AB=Bolt Dimensions
- D=Bolt Diameter
- H=Bolt Dimensions

NOTE: Specifications and dimensions subject to change without notice.

The following information illustrates the correct way to enter an order for SSX5A20SGMM1G. The ordering designation is detailed as follows.

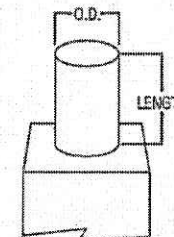
Steel	Square	Straight	Shaft Size	Wall Thickness	Mounting Height (ft.)	Base Type	Colors	Fixture Mounting + Type	No. + Location of Arms	Accessories (Ground Lug)
S	S	X	5	A	20	S	GM	M	1	G

Mtg. Height	Catalog Number	Wall Thickness	Base Square (In.)	Bolt Circle (In.)	Bolt Proj. (In.)	Shaft Size (In.)	Anchor Bolt Dia. + Length (In.)	Net Wt. (Lbs.)	EPA (Sq. Ft.) ⁴ At Pole Top				EPA (Sq. Ft.) ⁴ 2' Above Pole Top				Max. Fixture Load—Include Bracket (Lbs.)
									70	80	90	100	70	80	90	100	
10	SSX4A10SBZ	.120	10 1/2	11.0	4 1/2	4	3/4 x 25 x 3	96	39.8	29.9	23.2	18.4	33.0	24.8	19.3	15.3	150
15	SSX4A15SBZ	.120	10 1/2	11.0	4 1/2	4	3/4 x 25 x 3	133	19.6	14.4	10.8	8.2	17.2	12.7	9.5	7.3	150
20	SSX4A20SBZ	.120	10 1/2	11.0	4 1/2	4	3/4 x 25 x 3	152	12.9	9.1	6.5	4.6	11.7	8.2	5.9	4.2	200
25	SSX4A25SBZ	.120	10 1/2	11.0	4 1/2	4	3/4 x 25 x 3	208	8.7	5.6	3.6	2.1	8.0	5.2	3.3	2.0	200
20	SSX5A20SBZ	.120	10 1/2	11.0	4 1/2	5	3/4 x 25 x 3	202	21.9	15.7	11.6	8.5	19.9	14.3	10.5	7.7	200
25	SSX5A25SBZ	.120	10 1/2	11.0	4 1/2	5	3/4 x 25 x 3	248	15.5	10.5	7.2	4.8	14.3	9.8	6.6	4.4	200
30	SSX5A30SBZ	.120	10 1/2	11.0	4 1/2	5	3/4 x 25 x 3	293	8.2	4.6	2.1	--	7.7	4.3	2.0	--	300
35	SSX5M35SBZ	.188	10 1/2	11.0	4 1/2	5	3/4 x 25 x 3	480	11.8	7.1	3.8	1.5	11.1	6.6	3.6	1.4	300
25	SSX6A25SBZ	.120	12 1/2	12.5	5	6	1 x 36 x 4	295	24.1	16.8	12.0	8.5	22.2	15.6	11.1	7.8	200
30	SSX6A30SBZ	.120	12 1/2	12.5	5	6	1 x 36 x 4	347	14.0	8.7	5.0	2.5	13.1	8.2	4.7	2.3	300
30	SSX6M30SBZ	.188	12 1/2	12.5	5	6	1 x 36 x 4	505	26.4	18.1	12.5	8.4	24.7	16.9	11.6	7.9	300
35	SSX6M35SBZ	.188	12 1/2	12.5	5	6	1 x 36 x 4	584	19.7	12.7	7.9	4.4	18.8	12.0	7.5	4.2	300
35	SSX6X35SBZ	.250	12 1/2	12.5	5	6	1 x 36 x 4	696	28.9	19.7	13.4	8.9	27.7	18.8	12.7	8.4	300
39	SSX6M39SBZ	.188	12 1/2	12.5	5	6	1 x 36 x 4	647	15.4	9.1	4.8	1.8	14.6	8.7	4.6	1.7	300
39	SSX6X39SBZ	.250	12 1/2	12.5	5	6	1 x 36 x 4	822	23.5	15.4	9.8	5.7	22.4	14.6	9.3	5.4	300

- NOTES: 1 Catalog number includes pole with anchor bolts with double nuts (BEFORE INSTALLING ANCHOR BOLTS MAKE SURE PROPER ANCHOR BOLT TEMPLATE IS OBTAINED FROM COOPER LIGHTING).
 2 Tenon size or machining for rectangular arms must be specified. Hand hole is located 180° from single arm.
 3 Shaft size, base plate, anchor bolts and projections may vary slightly—all dimensions nominal.
 4 EPA's based on shaft properties with wind normal to flat. EPA's calculated using base wind velocity as indicated plus 30% gust factor.

MOUNTING OPTIONS=FIXED TENON [add as suffix]

Designation Number	O.D. (in.)	Length (in.)
1	2 3/8"	3 1/2"
2	2 3/8"	4"
3	3 1/2"	5"
5	3"	4"

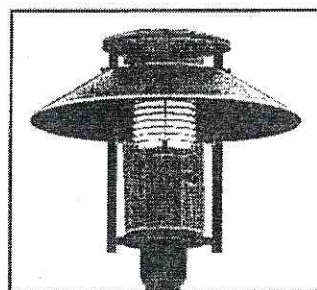
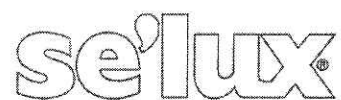


ACCESSORIES

- A=1/2" Tapped Hub¹
- B=3/4" Tapped Hub¹
- C=Convenience Outlet⁴
- G=Grounding Lug (Max. Wire #8 AWG)
- H=Additional Hand Hole and Cover (12" Below Pole Top—90° from Hand Hole)

- NOTES=1 Location is 3' above base 90° from hand hole.
 2 Outlet is located 4' above base and on same side of pole as hand hole, unless specified otherwise. Receptacle not included, provision only.

Saturn 2



Project: Landmark Gates

Type: OB1

Qty: 6

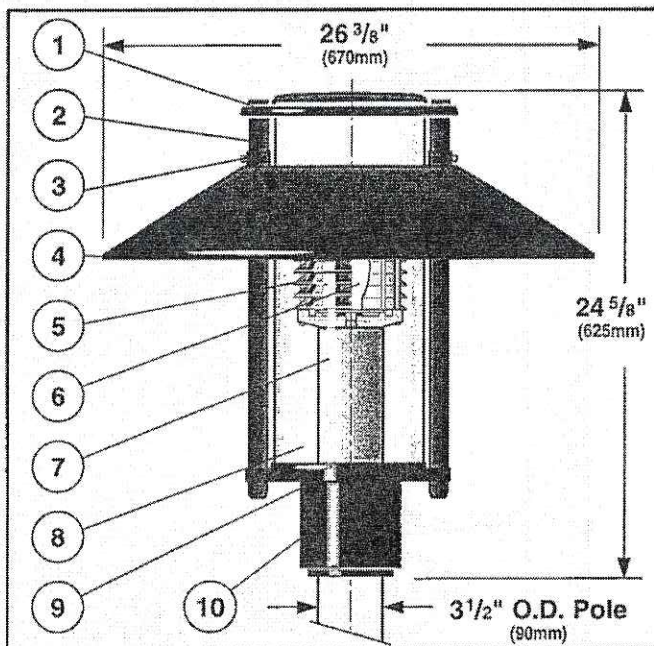
SA2	M3	1	S150	BK	208	
Fixture Series	Shielding	Mounting	Lamp Type/Wattage	Finish	Voltage	Option
S35	14'	BK	BC1			
Pole Series	Height	Finish	Options			

Series	Shielding	Mounting	Lamp Type / Wattage	Finish	Voltage	Options
SA2 Saturn 2	SP Type V Silver Louver	1 Single	<u>Metal Halide</u>	WH White	120	HS House Side Shield (180°)
	WP Type V White Louver	2 Double	H050** 50w	BK Black	208	Consult factory for details
	MR Type V MTR* 150 Refractor	W Wall Mount	S050** 50w	BZ Bronze	240	
	M3 Type IV MTR* 180 Refractor		S070 70w	SV Silver	277	
	M5 Type V MTR* 180 Refractor		H100 100w	SP Specify RAL#	347	
	B3 Type III Borosilicate Glass Refractor		S100 100w			
B5 Type V Borosilicate Glass Refractor		H150*** 150w				
			H175*** 175w			

* US Patent No. 4,669,034

** Only available in 120v and 277v

*** Only available with B3, B5, M3 and M5 refractors



1. Fixture Cover - Aluminum cover with white painted interior for maximum fixture efficiency, has industrial felt gasketing for air circulation. Cover removes for lamp access.

2. Cover Support - Machined support connected to fixture cover with architectural Allen head nut detail.

3. Cover Set Screw - Two stainless steel, socket head cap screws provide attachment of fixture cover and support to 1" (25mm) diameter connection rods. Loosening screws allows removal of fixture cover without tools.

4. Fixture Hood - Aluminum shade with white painted interior for maximum reflectivity.

5. Shielding - Select one of the following: Type V silver louver, Type V white louver, Type V MTR 150 refractor, Type IV MTR 180 refractor, or borosilicate glass refractor in either Type III or Type V distributions.

6. Lamp - One coated, base down, medium base ED-17 metal halide up to 175w or high pressure sodium up to 150w. Lamp provided by others.

7. Electroblock - Extruded aluminum tubing houses core and coil ballast. Pulse rated porcelain, medium base socket is mounted to die-cast aluminum socket cup for maximum heat dissipation and is pre-wired to ballast. Socket cup attaches to electroblock with two stainless steel screws and is easily removable for ballast service. Consult

factory for more detailed ballast information.

8. Diffuser - Clear, U.V. stabilized, acrylic with minimum wall thickness of 0.125" (3mm).

9. Gasketing - Continuous molded neoprene gasket provides weatherproofing, dust, and insect control at diffuser base.

10. Pole Fitter - Self-leveling, die-cast aluminum, fitter base secured to pole with two, stainless steel, Allen head set screws. 3 1/2" (90mm) I.D. external fitter for 3 1/2" (90mm) O.D. poles.

Exterior Luminaire Finish - SELUX utilizes a high quality Polyester Powder Coating. All SELUX luminaires and poles undergo a five stage intensive pretreatment process where product is thoroughly cleaned, phosphated and sealed. SELUX powder coated products provide excellent salt and humidity resistance as well as ultra violet resistance for color retention. All products are tested in accordance with test specifications for coatings from ASTM and PCI.

Standard exterior colors are White (WH), Black (BK), Bronze (BZ), and Silver (SV). RAL colors (SP) are available, please specify RAL#.

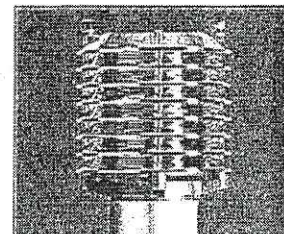
In a continuing effort to offer the best product possible, we reserve the right to change, without notice, specifications or materials that in our opinion will not alter the function of the product. Specification sheets found at www.selux.com/usa are the most recent versions and supercede all other printed or electronic versions.

Saturn 2

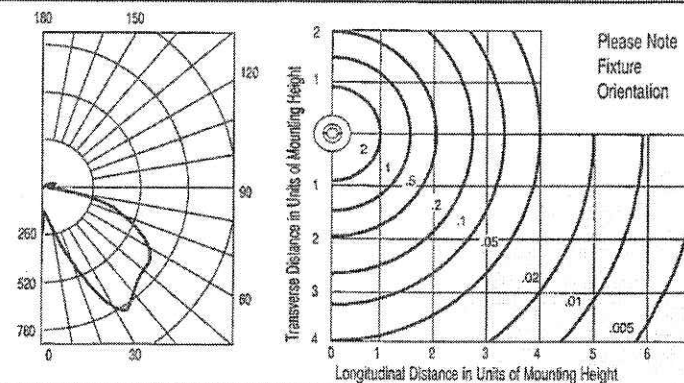


Silver Louver

Catalog # SA2-SP-1-H100
ITL Report # 40335

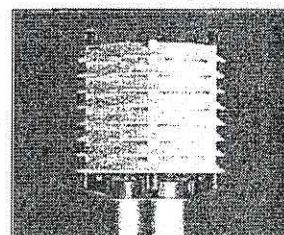


- Mirror finish with prismatic underside shields light source and controls glare..
- Resulting dark light effect offers superior visual comfort.
- Maximum candela of 784.7 at 35° from vertical.
- IES classification, Type V Cutoff.

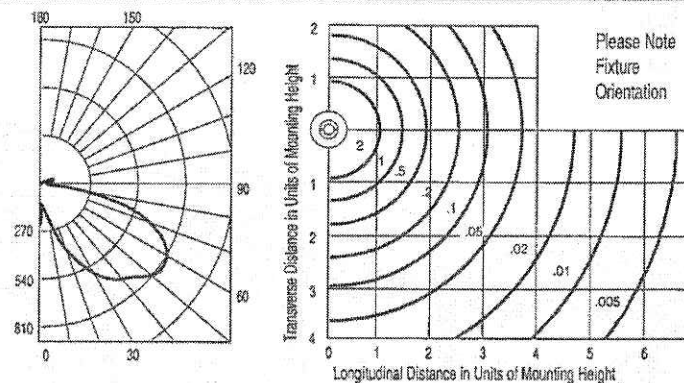


White Louver

Catalog # SA2-WP-1-H100
ITL Report # 40336

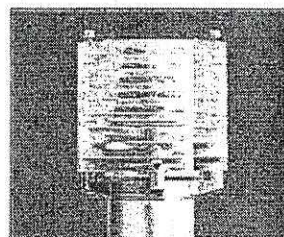


- A se'lux variation of a classic louver design.
- Combines brightness control with a subtle luminance around the source.
- Maximum candela of 833.8 at 55° from vertical.
- IES classification, Type V Cutoff.

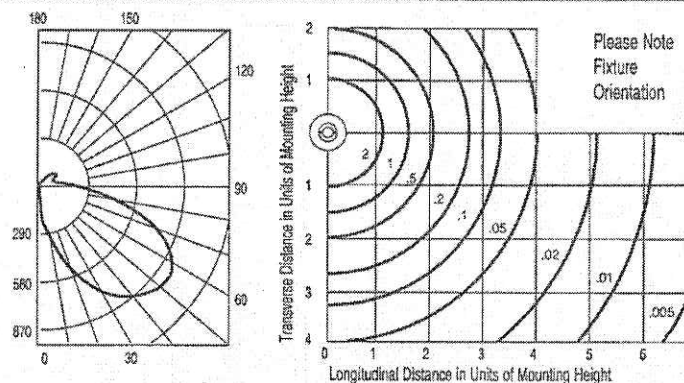


MTR Refractor

Catalog # SA2-MR-1-H100
ITL Report # 40334

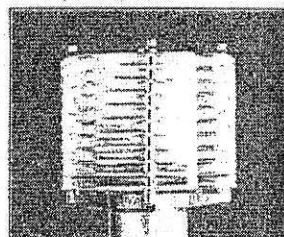


- Innovative multi-prisms for total reflection incorporates light-bending characteristics of a prism. US patent no. 4,669,034.
- Directs light precisely with minimum intensity at critical viewing angles.
- Blends efficiency with visual comfort.
- Maximum candela of 893.1 at 55° from vertical.
- IES classification, Type V Cutoff.

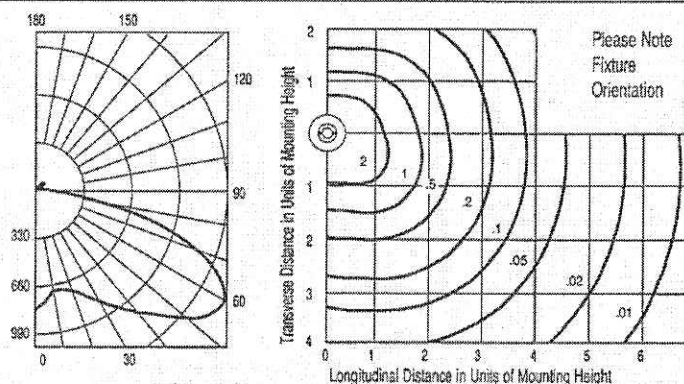


MTR 180 Refractor

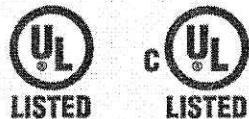
Catalog # SA2-M3-1-H100
For M5 expect results similar to MTR 150
ITL Report # SX7666



- Innovative multi-prisms for total reflection incorporates light-bending characteristics of a prism. US patent no. 4,669,034.
- Directs light precisely with minimum intensity at critical viewing angles.
- Blends efficiency with visual comfort.
- Maximum candela of 1476.4 at 60° from vertical.
- IES classification, Type IV Semi-cutoff.



SELUX Corp. © 2002
PO Box 1060, 5 Lumen Lane
Highland, NY 12528
TEL: (845) 691-7723
FAX: (845) 691-6749
E-mail: seluxus@selux.com
Web Site: www.selux.com/usa
SA2-1003-01 (ss-V3.2)



Union Made
Affiliated with
IBEW Local 363

HID Lamp Prorate Table (ED-17 Coated, Base-Down Lamp)

High Pressure Sodium			Metal Halide		
Wattage	Factor	Initial Lumens	Wattage	Factor	Initial Lumens
50	0.47	3700	50	0.44	3400
70	0.74	5800	70	0.64	5000
100	1.13	8800	100	1.00	7800
150	1.86	14500	150	1.60	12500
			175	1.79	14000

Conversion Chart

Values based on 12' mounting height.

Mounting Height	Multiply
10'	1.44
12'	1.00
14'	0.73
16'	0.56
18'	0.44

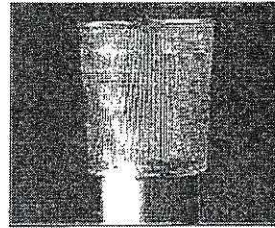
SA2-1003-02

Saturn 2

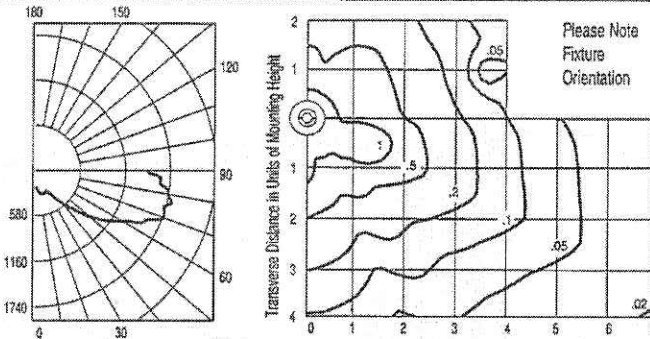


B3 Refractor

Catalog # SA2-B3-1-H100
ITL Report # 40332

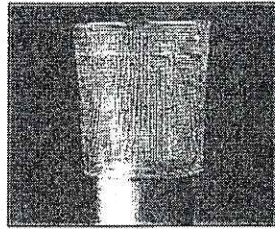


- High efficiency, molded borosilicate refractor system.
- Accommodates HID lamp types up to 175W.
- Ideal for applications demanding maximum spacing.
- Maximum candela distribution of 1749.0 at 77.5° from vertical
- IES classification, Type III Non-cutoff.

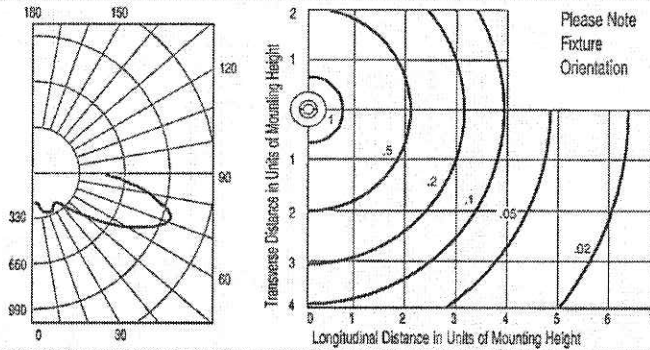


B5 Refractor

Catalog # SA2-B5-1-H100
ITL Report # 40333



- High efficiency, molded borosilicate refractor system.
- Accommodates HID lamp types up to 175W.
- Ideal for applications demanding maximum spacing.
- Maximum candela distribution of 1012.0 at 72.5° from vertical
- IES classification, Type V Non-cutoff.



Mounting

Single

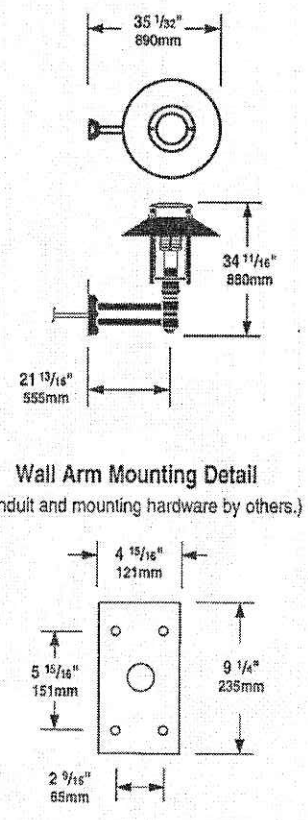
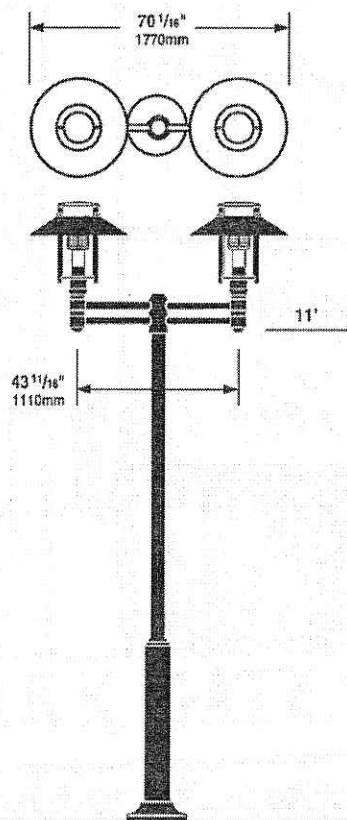
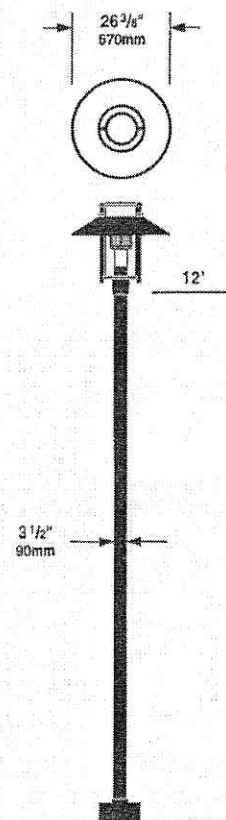
Die-cast aluminum fitter base secured to pole with three, stainless steel, Allen head set screws.

Double

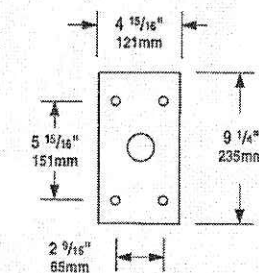
Die-cast aluminum double round luminaire mounting arm secured to pole with four stainless steel, Allen head set screws. Outer slip fitter for 3 1/2" tenon.

Wall

Die-cast aluminum double round wall mount arm. Secured to wall with 1/4" diameter threaded fasteners (by others).

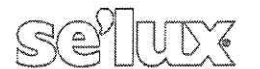


Wall Arm Mounting Detail
(Conduit and mounting hardware by others.)



SA2-1003-03

Saturn 2

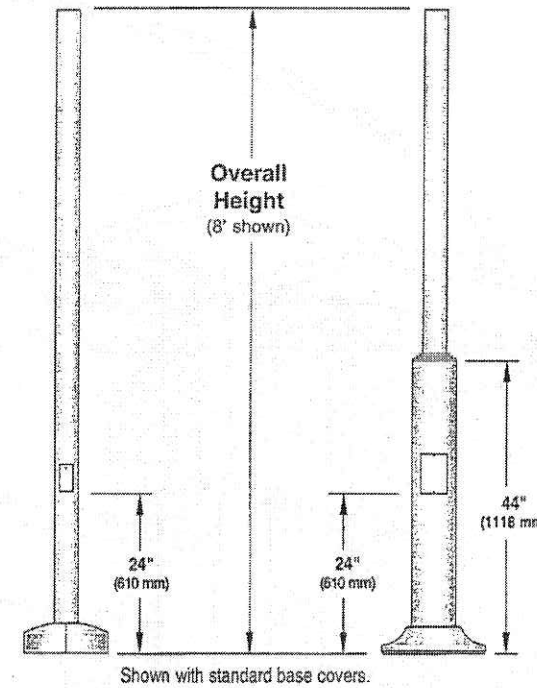


Pole Information

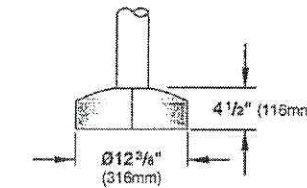
Refer to A35, S635, or S35 Pole specification sheets for construction details, anchorage information and additional options.

A35 & S35
Round Straight Aluminum
& Round Straight Steel Poles

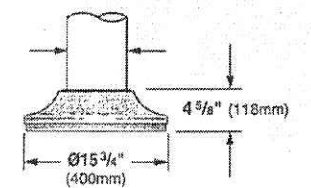
S635
Round Stepped
Steel Pole



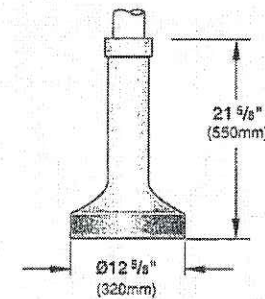
Straight Poles (A35 & S35)
BC5 Standard Base Cover
Two-piece cast aluminum



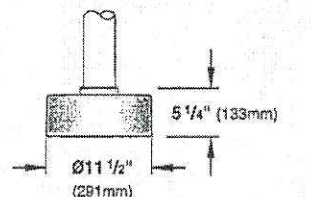
Stepped Steel Pole (S635)
BC6 Standard Base Cover
One-piece cast aluminum



BC1 Optional Base Cover
(A35 & S35) One-piece cast aluminum



BC4 Optional Base Cover
(A35 & S35) One-piece cast aluminum



Pole Series	Bolt Circle	EPA Information (ft ²)					Height	Finish	Options
		70 mph	80 mph	90 mph	100 mph	110 mph			
S635 3 1/2" Diameter Stepped Steel Pole	9"	57.6	44.3	34.6	27.5	22.8	8 ft.	WH White BK Black	BC1 Decorative Cast Aluminum Base Cover (for A35 & S35 poles only)
A35 3 1/2" Diameter Straight Aluminum Pole	7 3/4"	16.1	12.2	9.4	7.3	5.9			
S35 3 1/2" Diameter Straight Steel Pole	7 3/4"	14.8	11.3	8.6	6.7	5.4			
S635 3 1/2" Diameter Stepped Steel Pole	9"	45.6	35.0	27.3	21.6	17.8	10 ft.	BZ Bronze SV Silver	BC4 One-piece Cast Aluminum Base Cover (for A35 & S35 poles only)
A35 3 1/2" Diameter Straight Aluminum Pole	7 3/4"	12.4	9.3	7.1	5.4	4.3			
S35 3 1/2" Diameter Straight Steel Pole	7 3/4"	11.4	8.6	6.5	4.9	3.9			
S635 3 1/2" Diameter Stepped Steel Pole	9"	37.6	28.7	22.3	17.5	14.4	12 ft.	SP Specify RAL#	REC GFCI Receptacle with weather-proof cover*
A35 3 1/2" Diameter Straight Aluminum Pole	7 3/4"	9.9	7.3	5.4	4.0	3.1			
S35 3 1/2" Diameter Straight Steel Pole	7 3/4"	9.1	6.7	4.9	3.6	2.8			
S635 3 1/2" Diameter Stepped Steel Pole	9"	31.7	24.2	18.6	14.6	11.9	14 ft.		PCT Photocell Tenon
A35 3 1/2" Diameter Straight Aluminum Pole	7 3/4"	8.0	5.6	4.2	3.0	2.2			
S35 3 1/2" Diameter Straight Steel Pole	7 3/4"	7.3	5.3	3.8	2.7	1.9			
S635 3 1/2" Diameter Stepped Steel Pole	9"	21.7	15.8	12.3	9.6	7.6	16 ft.		
A35 3 1/2" Diameter Straight Aluminum Pole	7 3/4"	4.9	3.2	2.2	1.4	.08			
S35 3 1/2" Diameter Straight Steel Pole	7 3/4"	4.4	2.8	1.9	1.2	0.6			

Effective Projected Area of Single Luminaire = 0.92 ft² (0.09m²) / Weight of Luminaire = 35.0 lbs (15.9kg)

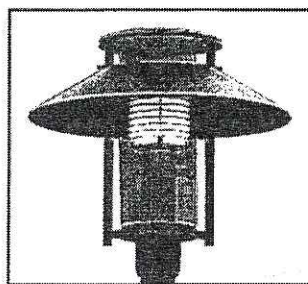
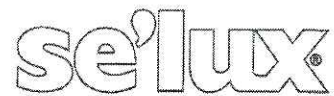
Effective Projected Area of Double Luminaire = 2.37 ft² (0.22m²) / Weight of Double Luminaire (includes arms) = 94.0 lbs (42.6kg)

SELUX Corp. © 2002
PO Box 1060, 5 Lumen Lane
Highland, NY 12528
SA2-1003-04 (6-49014-00)

TEL: (845) 691-7723 FAX: (845) 691-6749
E-mail: seluxus@selux.com
Web Site: www.selux.com/usa

In a continuing effort to offer the best product possible, we reserve the right to change, without notice, specifications or materials that in our opinion will not alter the function of the product. Specification sheets found at www.selux.com/usa are the most recent versions and supercede all other printed or electronic versions.

Saturn 2



Project: Landmark Gates

Type: OB2

Qty: 2

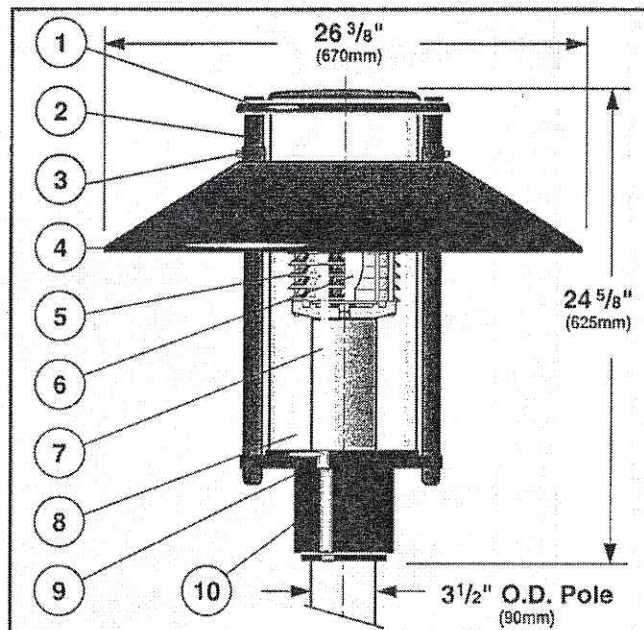
SA2	M5	1	S150	BK	208	
Fixture Series	Shielding	Mounting	Lamp Type/Wattage	Finish	Voltage	Option
S35	14'	BK	BC1			
Pole Series	Height	Finish	Options			

Series	Shielding	Mounting	Lamp Type / Wattage	Finish	Voltage	Options
SA2 Saturn 2	SP Type V Silver Louver	1 Single	Metal Halide	WH White	120	HS House Side Shield (180)
	WP Type V White Louver	2 Double	H050** 50w	BK Black	208	Consult factory for details
	MR Type V MTR* 150 Refractor	W Wall Mount	S050** 50w	BZ Bronze	240	
	M3 Type IV MTR* 180 Refractor		H070 70w	SV Silver	277	
	M5 Type V MTR* 180 Refractor		S070 70w	SP Specify RAL#	347	
	B3 Type III Borosilicate Glass Refractor		H100 100w			
B5 Type V Borosilicate Glass Refractor		S100 100w				
			H150*** 150w			
			S150*** 150w			
			H175*** 175w			

* US Patent No. 4,669,034

** Only available in 120v and 277v

*** Only available with B3, B5, M3 and M5 refractors



1. Fixture Cover - Aluminum cover with white painted interior for maximum fixture efficiency, has industrial felt gasketing for air circulation. Cover removes for lamp access.

2. Cover Support - Machined support connected to fixture cover with architectural Allen head nut detail.

3. Cover Set Screw - Two stainless steel, socket head cap screws provide attachment of fixture cover and support to 1" (25mm) diameter connection rods. Loosening screws allows removal of fixture cover without tools.

4. Fixture Hood - Aluminum shade with white painted interior for maximum reflectivity.

5. Shielding - Select one of the following: Type V silver louver, Type V white louver, Type V MTR 150 refractor, Type IV MTR 180 refractor, or borosilicate glass refractor in either Type III or Type V distributions.

6. Lamp - One coated, base down, medium base ED-17 metal halide up to 175w or high pressure sodium up to 150w. Lamp provided by others.

7. Electroblock - Extruded aluminum tubing houses core and coil ballast. Pulse rated porcelain, medium base socket is mounted to die-cast aluminum socket cup for maximum heat dissipation and is pre-wired to ballast. Socket cup attaches to electroblock with two stainless steel screws and is easily removable for ballast service. Consult

factory for more detailed ballast information.

8. Diffuser - Clear, U.V. stabilized, acrylic with minimum wall thickness of 0.125" (3mm).

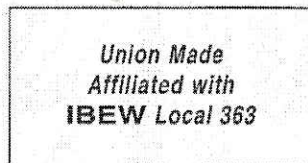
9. Gasketing - Continuous molded neoprene gasket provides weatherproofing, dust, and insect control at diffuser base.

10. Pole Fitter - Self-leveling, die-cast aluminum, fitter base secured to pole with two, stainless steel, Allen head set screws. 3 1/2" (90mm) I.D. external fitter for 3 1/2" (90mm) O.D. poles.

Exterior Luminaire Finish - SELUX utilizes a high quality Polyester Powder Coating. All SELUX luminaires and poles undergo a five stage intensive pretreatment process where product is thoroughly cleaned, phosphated and sealed. SELUX powder coated products provide excellent salt and humidity resistance as well as ultra violet resistance for color retention. All products are tested in accordance with test specifications for coatings from ASTM and PCI.

Standard exterior colors are White (WH), Black (BK), Bronze (BZ), and Silver (SV). RAL colors (SP) are available, please specify RAL#.

In a continuing effort to offer the best product possible, we reserve the right to change, without notice, specifications or materials that in our opinion will not alter the function of the product. Specification sheets found at www.selux.com/usa are the most recent versions and supercede all other printed or electronic versions.



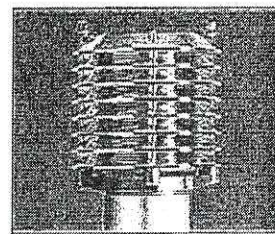
SELUX Corp. © 2002
PO Box 1060, 5 Lumen Lane
Highland, NY 12528
TEL: (845) 691-7723
FAX: (845) 691-6749
E-mail: seluxus@selux.com
Web Site: www.selux.com/usa
SA2-1003-01 (ss-V3.2)

Saturn 2

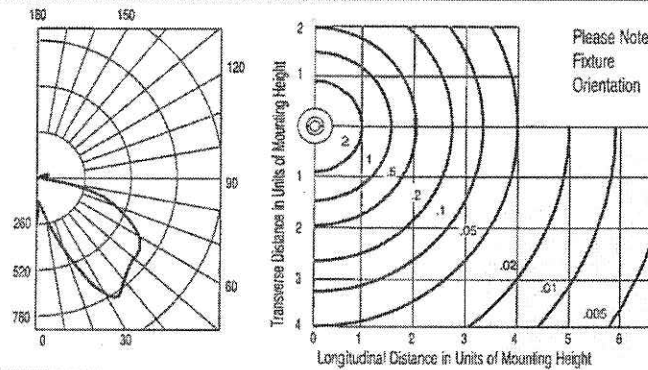


Silver Louver

Catalog # SA2-SP-1-H100
ITL Report # 40335

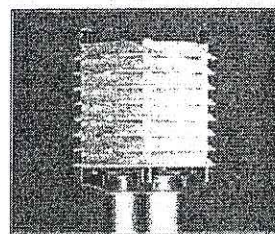


- Mirror finish with prismatic underside shields light source and controls glare.
- Resulting dark light effect offers superior visual comfort.
- Maximum candela of 784.7 at 35° from vertical.
- IES classification, Type V Cutoff.

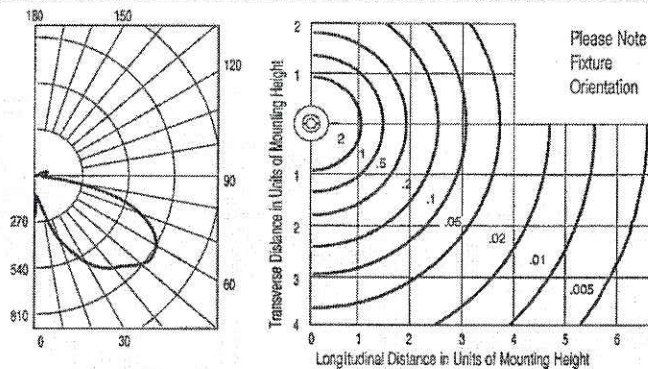


White Louver

Catalog # SA2-WP-1-H100
ITL Report # 40336

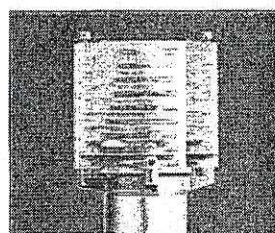


- A se'lux variation of a classic louver design.
- Combines brightness control with a subtle luminance around the source.
- Maximum candela of 833.8 at 55° from vertical.
- IES classification, Type V Cutoff.

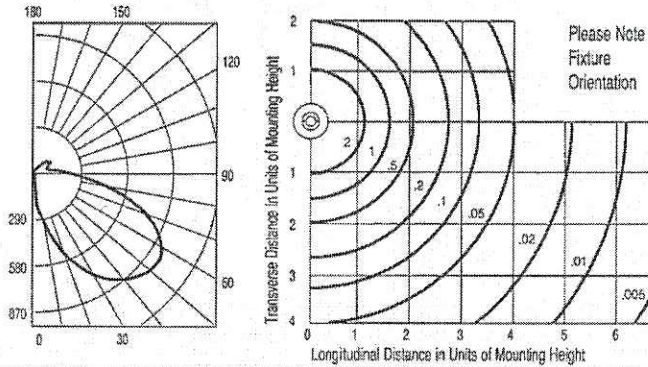


MTR Refractor

Catalog # SA2-MR-1-H100
ITL Report # 40334

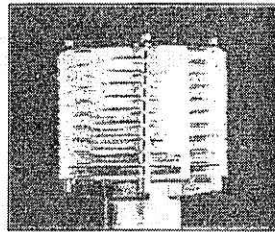


- Innovative multi-prisms for total reflection incorporates light-bending characteristics of a prism. US patent no. 4,669,034.
- Directs light precisely with minimum intensity at critical viewing angles.
- Blends efficiency with visual comfort.
- Maximum candela of 893.1 at 55° from vertical.
- IES classification, Type V Cutoff.

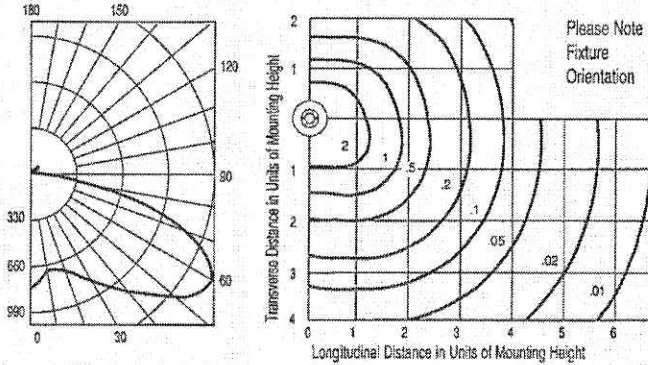


MTR 180 Refractor

Catalog # SA2-M3-1-H100
For M5 expect results similar to MTR 150
ITL Report # SX7666



- Innovative multi-prisms for total reflection incorporates light-bending characteristics of a prism. US patent no. 4,669,034.
- Directs light precisely with minimum intensity at critical viewing angles.
- Blends efficiency with visual comfort.
- Maximum candela of 1476.4 at 60° from vertical.
- IES classification, Type IV Semi-cutoff.

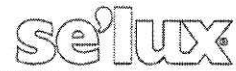


High Pressure Sodium			Metal Halide		
Wattage	Factor	Initial Lumens	Wattage	Factor	Initial Lumens
50	0.47	3700	50	0.44	3400
70	0.74	5800	70	0.64	5000
100	1.13	8800	100	1.00	7800
150	1.86	14500	150	1.60	12500
			175	1.79	14000

Mounting Height	Multiply
10'	1.44
12'	1.00
14'	0.73
16'	0.56
18'	0.44

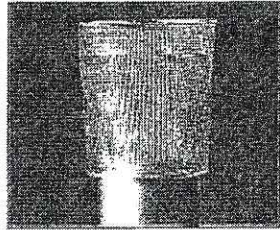
SA2-1003-02

Saturn 2

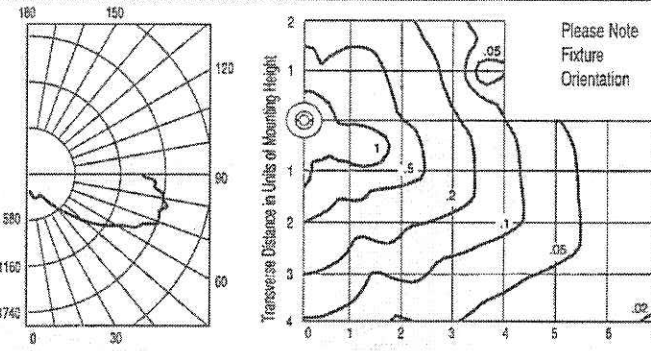


B3 Refractor

Catalog # SA2-B3-1-H100
ITL Report # 40332

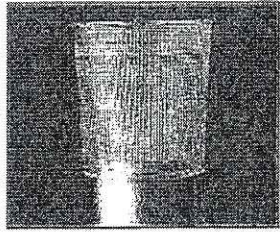


- High efficiency, molded borosilicate refractor system.
- Accommodates HID lamp types up to 175W.
- Ideal for applications demanding maximum spacing.
- Maximum candela distribution of 1749.0 at 77.5° from vertical
- IES classification, Type III Non-cutoff.

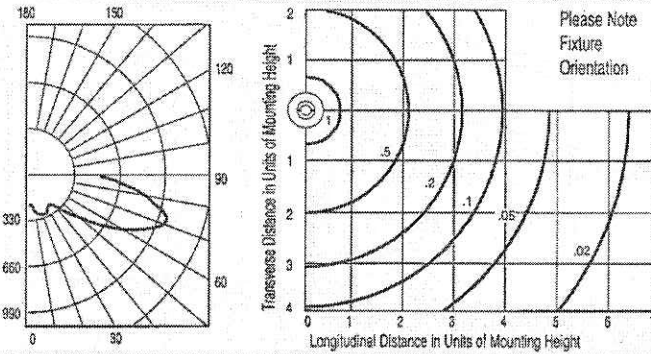


B5 Refractor

Catalog # SA2-B5-1-H100
ITL Report # 40333



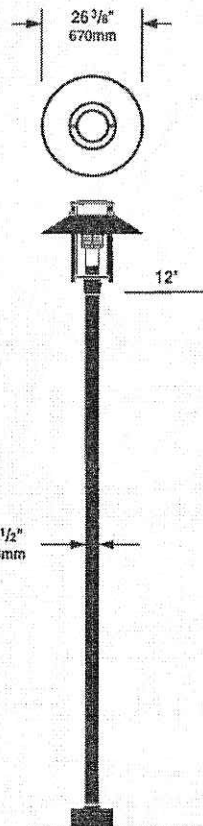
- High efficiency, molded borosilicate refractor system.
- Accommodates HID lamp types up to 175W.
- Ideal for applications demanding maximum spacing.
- Maximum candela distribution of 1012.0 at 72.5° from vertical
- IES classification, Type V Non-cutoff.



Mounting

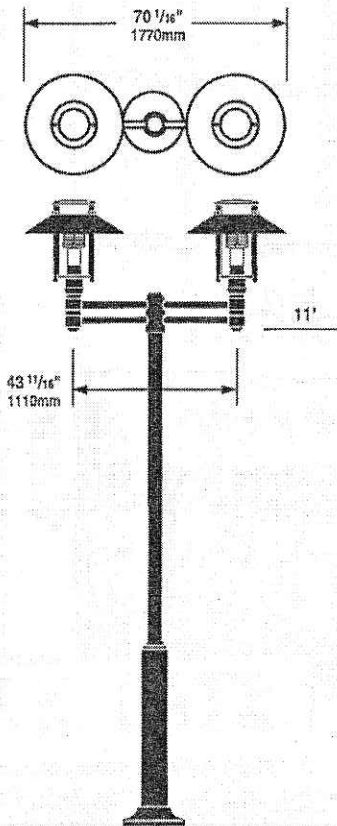
Single

Die-cast aluminum fitter base secured to pole with three, stainless steel, Allen head set screws.



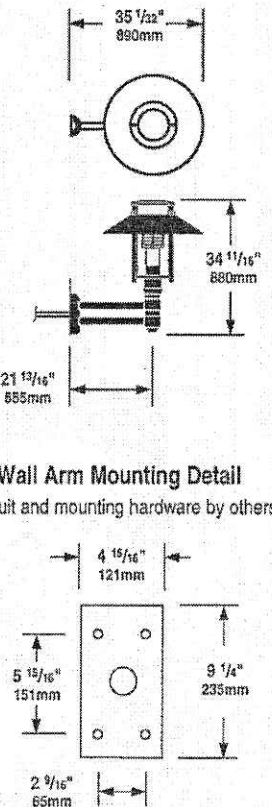
Double

Die-cast aluminum double round luminaire mounting arm secured to pole with four stainless steel, Allen head set screws. Outer slip fitter for 3 1/2" tenon.



Wall

Die-cast aluminum double round wall mount arm. Secured to wall with 1/4" diameter threaded fasteners (by others).



Wall Arm Mounting Detail
(Conduit and mounting hardware by others.)

SA2-1003-03

Saturn 2

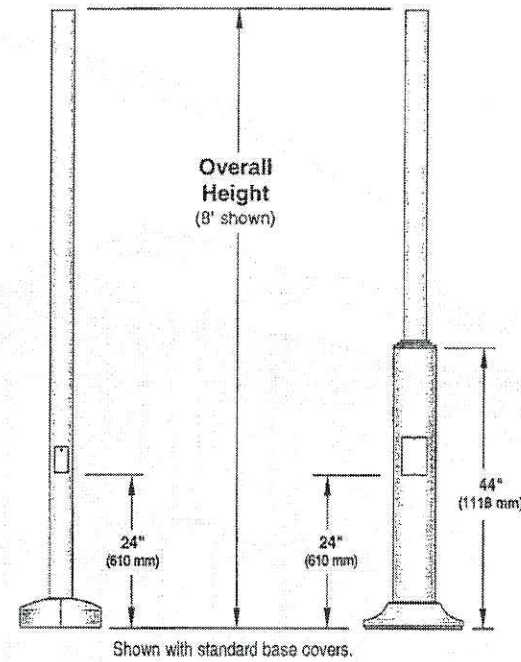


Pole Information

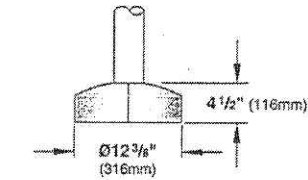
Refer to A35, S635, or S35 Pole specification sheets for construction details, anchorage information and additional options.

A35 & S35
Round Straight Aluminum
& Round Straight Steel Poles

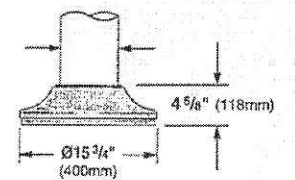
S635
Round Stepped
Steel Pole



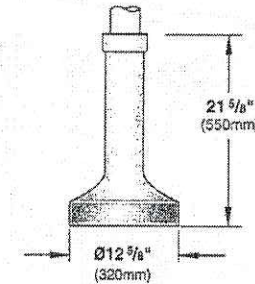
Straight Poles (A35 & S35)
BC5 Standard Base Cover
Two-piece cast aluminum



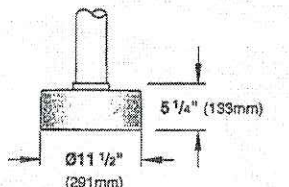
Stepped Steel Pole (S635)
BC6 Standard Base Cover
One-piece cast aluminum



BC1 Optional Base Cover
(A35 & S35) One-piece cast aluminum



BC4 Optional Base Cover
(A35 & S35) One-piece cast aluminum



Pole Series	Bolt Circle	EPA Information (ft ²)					Height	Finish	Options
		70 mph	80 mph	90 mph	100 mph	110 mph			
S635 3 1/2" Diameter Stepped Steel Pole	9"	57.6	44.3	34.6	27.5	22.8	8 8 ft.	WH White BK Black	BC1 Decorative Cast Aluminum Base Cover (for A35 & S35 poles only)
A35 3 1/2" Diameter Straight Aluminum Pole	7 3/4"	16.1	12.2	9.4	7.3	5.9			
S35 3 1/2" Diameter Straight Steel Pole	7 3/4"	14.8	11.3	8.6	6.7	5.4	10 10 ft.	BZ Bronze SV Silver	BC4 One-piece Cast Aluminum Base Cover (for A35 & S35 poles only)
S635 3 1/2" Diameter Stepped Steel Pole	9"	45.6	35.0	27.3	21.6	17.8			
A35 3 1/2" Diameter Straight Aluminum Pole	7 3/4"	12.4	9.3	7.1	5.4	4.3	12 12 ft.	SP Specify RAL#	REC GFCI Receptacle with weather-proof cover*
S35 3 1/2" Diameter Straight Steel Pole	7 3/4"	11.4	8.6	6.5	4.9	3.9			
S635 3 1/2" Diameter Stepped Steel Pole	9"	37.6	28.7	22.3	17.5	14.4	14 14 ft.	PCT Photocell Tenon	* Weatherproof cover intended for portable tools or other portable equipment connected to the outlet only when attended. For other requirements please consult factory.
A35 3 1/2" Diameter Straight Aluminum Pole	7 3/4"	9.9	7.3	5.4	4.0	3.1			
S35 3 1/2" Diameter Straight Steel Pole	7 3/4"	9.1	6.7	4.9	3.6	2.8	16 16 ft.		
S635 3 1/2" Diameter Stepped Steel Pole	9"	31.7	24.2	18.6	14.6	11.9			
A35 3 1/2" Diameter Straight Aluminum Pole	7 3/4"	8.0	5.8	4.2	3.0	2.2			
S35 3 1/2" Diameter Straight Steel Pole	7 3/4"	7.3	5.3	3.8	2.7	1.9			
S635 3 1/2" Diameter Stepped Steel Pole	9"	21.7	15.8	12.3	9.6	7.8			
A35 3 1/2" Diameter Straight Aluminum Pole	7 3/4"	4.9	3.2	2.2	1.4	.08			
S35 3 1/2" Diameter Straight Steel Pole	7 3/4"	4.4	2.8	1.9	1.2	0.6			

Other pole configurations available, consult factory. EPA Calculations allow for 1.3 Gust Factor

Effective Projected Area of Single Luminaire = 0.92 ft² (0.09m²) / Weight of Luminaire = 35.0 lbs (15.9kg)
Effective Projected Area of Double Luminaire = 2.37 ft² (0.22m²) / Weight of Double Luminaire (includes arms) = 94.0 lbs (42.6kg)

SELUX Corp. © 2002
PO Box 1060, 5 Lumen Lane Highland, NY 12528
SA2-1003-04 (6-49014-00)

TEL: (845) 691-7723 FAX: (845) 691-6749
E-mail: seluxus@selux.com
Web Site: www.selux.com/usa

In a continuing effort to offer the best product possible, we reserve the right to change, without notice, specifications or materials that in our opinion will not affect the function of the product. Specification sheets found at www.selux.com/usa are the most recent versions and supercede all other printed or electronic versions.

DESCRIPTION

Dominated by flat surfaces and strong lines that emphasize the principles of architecture, the *IMPACT* Trapezoid cutoff wall luminaire make an ideal complement to site design. U.L. Listed and CSA Certified for wet locations in down mount applications and damp locations in up mounted applications.

APPLICATION

The *IMPACT*'s rugged die-cast construction and full cutoff classified optics perfectly provide facade and security lighting needs for light restricted zones surrounding schools, office complexes, apartments, and recreational facilities.

SPECIFICATION FEATURES

A—Housing

The housing is a two-piece design of die-cast aluminum for precise control of tolerances and repeatability.

B—Mounting

Gasketed and zinc plated rigid steel mounting attachment fits directly to 4" J-Box or wall with "Hook-N-Lock" mechanism for quick installation. Secured with two (2) captive corrosion resistant black oxide coated allen head set screws concealed but accessible from bottom.

C—Optical Modules

All optical modules utilize high performance 95% reflective sheet. Strong Type II optical module is standard.

D—Ballast

HID luminaires supplied with high power factor ballast with Class H insulation. Minimum starting temperatures are -40°C (-40°F) for HPS and -30°C (-20°F) for MH. Compact Fluorescent luminaires feature program start, high efficient multi-voltage 50/60Hz ballast with -18°C (0°F) minimum starting.

E—Door

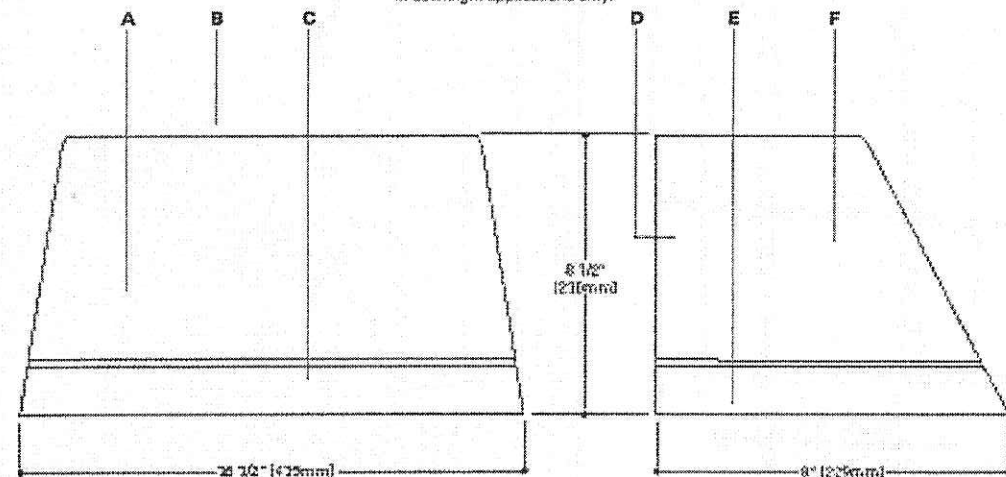
Die-cast door features, 1/8" heat- and impact-resistant clear tempered glass lens mounted with internal plated steel clips and sealed with EPDM gasketing. Hinged door secured in place via two (2) captive fasteners.

F—Finish

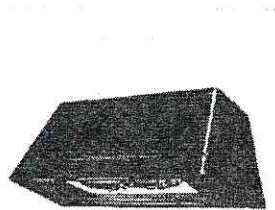
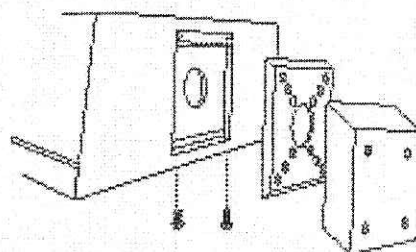
Durable polyester powder coat finish. Standard color is bronze. Optional white and black colors available. Other finish colors available. Consult your Cooper Lighting Representative concerning special color requirements.



DARK SKY FRIENDLY
In downlight applications only.



HOOK-N-LOCK MOUNTING (Mounting attachment included. J-Box not included.)



IP IMPACT TRAPEZOID

50 - 175 W
High Pressure Sodium
Metal Halide

26 - 52 W
Compact Fluorescent
**FULL CUTOFF
WALL MOUNT
LUMINAIRE**



TECHNICAL DATA

25°C Maximum Ambient Temperature
External Supply Wiring 90°C Minimum
Down Mounted—Wet Location
Up Mounted—Damp Location

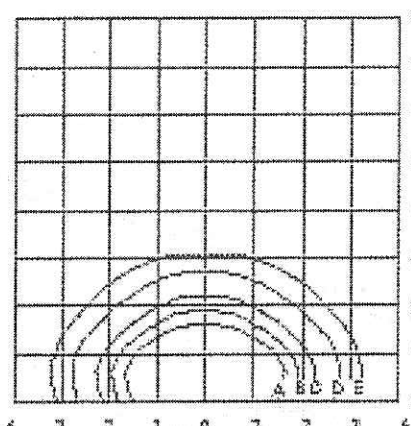
ENERGY DATA

High Reactance Ballast Input Watts
50W HPS HPF (86 Watts)
50W MH HPF (72 Watts)
70W HPS HPF (91 Watts)
70W MH HPF (90 Watts)
100W HPS HPF (130 Watts)
100W MH HPF (129 Watts)
150W HPS HPF (190 Watts)
150W MH HPF (185 Watts)
CWA Ballast Input Watts
175W MH HPF (210 Watts)
Electronic Ballast Input Watts
26W PL HPF (29 Watts)
32W PL HPF (36 Watts)
42W PL HPF (46 Watts)
52W PL HPF (55 Watts)

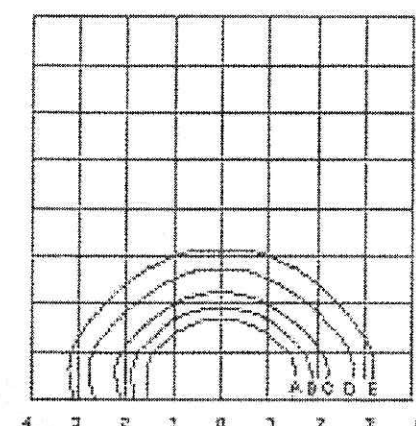
SHIPPING DATA

Approximate Net Weight:
18 lbs. (8 kgs.)

PHOTOMETRICS



MHIP-T-175-MT-LL
175-Watt MH
14,000-Lumen Clear Lamp



HPIP-T-150-MT-LL
150-Watt HPS
18,000-Lumen Clear Lamp

Footcandle Table

Select mounting height and read across for footcandle values of each isofootcandle line. Distance in units of mounting height.

Mounting Height	Footcandle Values for Isofootcandle Lines				
	A	B	C	D	E
10'	4.50	2.25	1.13	0.45	0.23
15'	2.00	1.00	0.50	0.20	0.10
20'	1.12	0.56	0.28	0.11	0.06

ORDERING INFORMATION

SAMPLE NUMBER: MHIP-T-150-MT-LL

Ordering information diagram showing components: HP (Lamp Type: MH=Metal Halide, H P=High Pressure Sodium, PL=Compact Fluorescent), IP (Fixture Type: IP=IMPACT), T (Fixture Shape: T=Trapezoid), 150 (Lamp Wattage: HID: 50=50W, 70=70W, 100=100W, 150=150W, 175=175W; Compact Fluorescent: 26/32/42=26, 32, or 42W; 52=52W), 208 (Voltage: 120V, 208V, 240V, 277V, 347V, 480V; DT=Dual-Tap, MT=Multi-Tap, TT=Triple-Tap, E=Electronic Ballast), and Options (add as suffix): Q=Quartz Restrike, EM=Emergency Quartz Restrike with Time Delay Relay, EM/SC=Emergency Separate Circuit, EM/SC/12V=Emergency Separate Circuit (12V), EM140=Emergency CFL Battery Pack, F=Single Fuse—120, 277 or 347V (Must Specify Voltage), F2=Double Fused—208 or 240V (Must Specify Voltage), TR=Tamper Resistant Screw (Door and Mounting Plate), PE=Button Photocontrol (Must Specify Voltage), UPL10=0% Uplight, LL=Lamp Included (Must Specify Wattage on PL), BK=Black, WH=White.

STOCK SAMPLE NUMBER (Lamp Included)

SAMPLE NUMBER: MHIT17

Stock sample number diagram showing components: IT (Lamp Type: HP=High Pressure Sodium, MH=Metal Halide), IT (Fixture Type: IT=IMPACT Trapezoid), and Lamp Wattage: 10=100W, 15=150W, 17=175W.

NOTES: Options not available with stock products. Order Accessories as separate items for field installation. Refer to standard ordering information to add options and accessories.

NOTES: 1 All HID lamps are medium-base. 2 Available only in 120, 277V and Dual-Tap. 3 Not available in 480V. 4 Metal Halide construction only. 5 (2) 26W quad tube lamps only. 6 HID products also available in non-US voltages and 50Hz for international markets. Consult your Cooper Lighting Representative for availability and ordering information. 7 Dual-Tap ballast are 120/277V wired 277V. 8 Multi-Tap ballast are 120/208/240/277V wired 277V. 9 Triple-Tap ballast are 120/277/347V wired 347V. 10 Supplied with 120V through 277V 50/60Hz for Compact Fluorescent. 11 Must be listed in the order shown and separated by a dash. 12 The power might need to cycle and allow HID lamp to cool in warm climates. Available for 70 and 100W HID lamps only. 13 Supplied with 12V Bi-pin socket for connection to emergency battery pack (supplied by others) that will operate up to a 35W MR16 lamp. 14 Cold weather battery pack will operate up to 42W CFL lamp for 90 min. 15 Lamp is shipped separate from luminaire. Lamp is Cooper designated product based on luminaire requirements. Specified lamps must be ordered as a separate line item. 16 Painted bronze. Supplied with lamp and Multi-Tap HPF ballast wired 277V. 17 Specifications and dimensions subject to change without notice. 18 Products also available in non-US voltages and frequencies for international markets. 19 Consult your Cooper Lighting Representative for availability and ordering information.

TYPE: '002'

CATALOG #:

COOPER LIGHTING—LUMARK®

IP IMPACT TRAPEZOID

DESCRIPTION

Dominated by flat surfaces and strong lines that emphasize the principles of architecture, the *IMPACT* Trapezoid cutoff wall luminaire make an ideal complement to site design. U.L. Listed and CSA Certified for wet locations in down mount applications and damp locations in up mounted applications.

APPLICATION

The *IMPACT's* rugged die-cast construction and full cutoff classified optics perfectly provide facade and security lighting needs for light restricted zones surrounding schools, office complexes, apartments, and recreational facilities.

SPECIFICATION FEATURES

A...Housing

The housing is a two-piece design of die-cast aluminum for precise control of tolerances and repeatability.

B...Mounting

Gasketed and zinc plated rigid steel mounting attachment fits directly to 4" J-Box or wall with "Hook-N-Lock" mechanism for quick installation. Secured with two (2) captive corrosion resistant black oxide coated allen head set screws concealed but accessible from bottom.

C...Optical Modules

All optical modules utilize high performance 95% reflective sheet. Strong Type II optical module is standard.

D...Ballast

HID luminaires supplied with high power factor ballast with Class H insulation. Minimum starting temperatures are -40°C (-40°F) for HPS and -30°C (-20°F) for MH. Compact Fluorescent luminaires feature program start, high efficient multi-voltage 50/60Hz ballast with -18°C (0°F) minimum starting.

E...Door

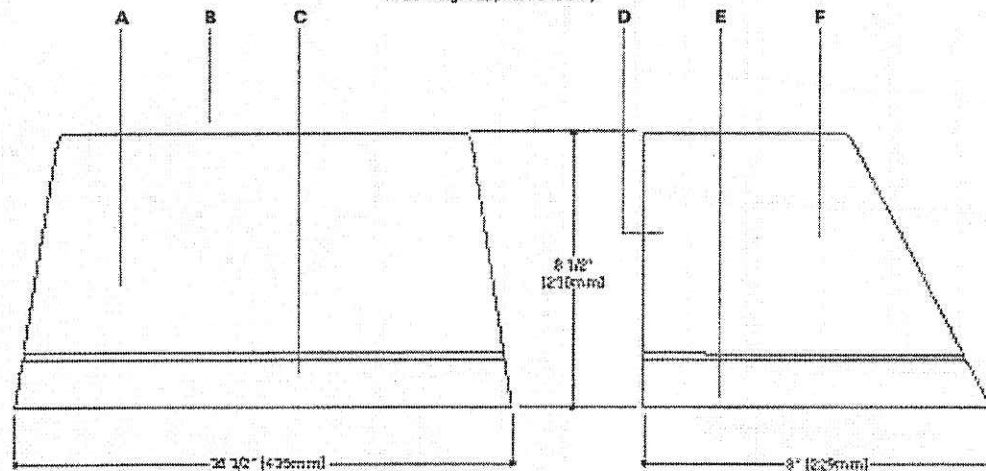
Die-cast door features, 1/8" heat- and impact-resistant clear tempered glass lens mounted with internal plated steel clips and sealed with EPDM gasketing. Hinged door secured in place via two (2) captive fasteners.

F...Finish

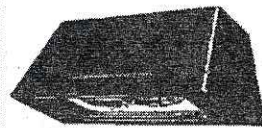
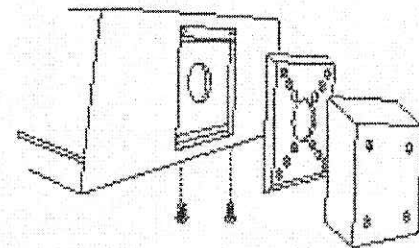
Durable polyester powder coat finish. Standard color is bronze. Optional white and black colors available. Other finish colors available. Consult your Cooper Lighting Representative concerning special color requirements.



DARK SKY FRIENDLY
In daylight applications only.



HOOK-N-LOCK MOUNTING (Mounting attachment included. J-Box not included.)



IP IMPACT TRAPEZOID

50 - 175 W
High Pressure Sodium
Metal Halide

26 - 52 W
Compact Fluorescent
**FULL CUTOFF
WALL MOUNT
LUMINAIRE**



TECHNICAL DATA

25°C Maximum Ambient Temperature
External Supply Wiring 90°C Minimum
Down Mounted—Wet Location
Up Mounted—Damp Location

ENERGY DATA

High Reactance Ballast Input Watts

50W HPS HPF (66 Watts)
50W MH HPF (72 Watts)
70W HPS HPF (91 Watts)
70W MH HPF (90 Watts)
100W HPS HPF (130 Watts)
100W MH HPF (129 Watts)
150W HPS HPF (190 Watts)
150W MH HPF (185 Watts)

CWA Ballast Input Watts

175W MH HPF (210 Watts)

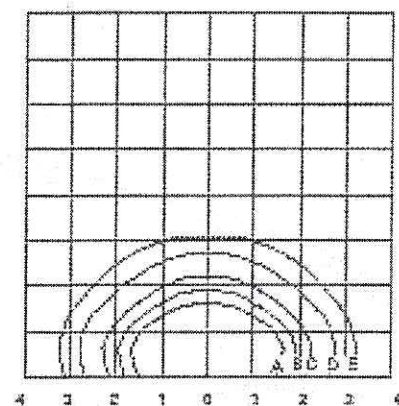
Electronic Ballast Input Watts

26W PL HPF (29 Watts)
32W PL HPF (36 Watts)
42W PL HPF (46 Watts)
52W PL HPF (55 Watts)

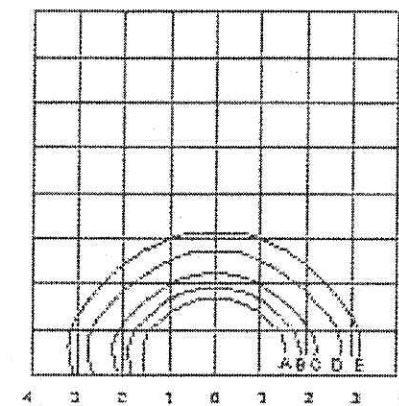
SHIPPING DATA

Approximate Net Weight:
18 lbs. (8 kgs.)

PHOTOMETRICS



MHIP-T-175-MT-LL
175-Watt MH
14,000-Lumen Clear Lamp



HPIP-T-150-MT-LL
150-Watt HPS
16,000-Lumen Clear Lamp

Footcandle Table

Select mounting height and read across for footcandle values of each isofootcandle line. Distance in units of mounting height.

Mounting Height	Footcandle Values for Isofootcandle Lines				
	A	B	C	D	E
10'	4.50	2.25	1.13	0.45	0.23
15'	2.00	1.00	0.50	0.20	0.10
20'	1.12	0.55	0.28	0.11	0.05

ORDERING INFORMATION

SAMPLE NUMBER: MHIP-T-150-MT-LL

HP Lamp Type MH=Metal Halide HP=High Pressure Sodium PL=Compact Fluorescent	IP Fixture Type IP=IMPACT	T Fixture Shape T=Trapezoid	70 Lamp Wattage HID 50=50W ¹ 70=70W ² 100=100W 150=150W 175=175W ⁴ Compact Fluorescent 26/32/42=26, 32, or 42W 52=52W ⁵	208 Voltage ⁶ 120V 208V 240V 277V 347V 480V DT=Dual-Tap ⁷ MT=Multi-Tap ⁸ TT=Triple-Tap ⁹ E=Electronic Ballast ¹⁰	Options (add as suffix) ¹¹ Q=Quartz Restrike ¹¹ EM=Emergency Quartz Restrike with Time Delay Relay ¹¹ EM/SC=Emergency Separate Circuit ¹¹ EM/SC/12V=Emergency Separate Circuit (12V) ¹¹ EM140=Emergency CFL Battery Pack ¹¹ F=Single Fuse—120, 277 or 347V (Must Specify Voltage) F2=Double Fused—208 or 240V (Must Specify Voltage) TR=Tamper Resistant Screw (Door and Mounting Plate) PE=Button Photocontrol (Must Specify Voltage) UPL10=10% Uplight L=Lamp included (Must Specify Wattage on PL) ¹¹ BK=Black WH=White
--	--	--	--	---	--

STOCK SAMPLE NUMBER (Lamp Included)

SAMPLE NUMBER: MHIT17

Lamp Type HP=High Pressure Sodium MH=Metal Halide	IT Fixture Type ¹¹ IT=IMPACT Trapezoid	Lamp Wattage 10=100W 15=150W 17=175W
---	--	---

NOTES: Options not available with stock products. Order Accessories as separate items for field installation. Refer to standard ordering information to add options and accessories.

NOTES: 1 All HID lamps are medium-base. 2 Available only in 120, 277V and Dual-Tap. 3 Not available in 480V. 4 Metal Halide construction only. 5 (2) 26W quad tube lamps only. 6 HID products also available in non-US voltages and 50Hz for international markets. Consult your Cooper Lighting Representative for availability and ordering information. 7 Dual-Tap ballast are 120/277V wired 277V. 8 Multi-Tap ballast are 120/208/240/277V wired 277V. 9 Triple-Tap ballast are 120/277/347V wired 347V. 10 Supplied with 120V through 277V 50/60Hz for Compact Fluorescent. 11 Must be listed in the order shown and separated by a dash. 12 The power might need to cycle and allow HID lamp to cool in warm climates. Available for 70 and 100W HID lamps only. 13 Supplied with 12V Bi-pin socket for connection to emergency battery pack (supplied by others) that will operate up to a 35W MR16 lamp. 14 Cold weather battery pack will operate up to 42W CFL lamp for 90 min. 15 Lamp is shipped separate from luminaire. Lamp is Cooper designated product based on luminaire requirements. Specified lamps must be ordered as a separate line item. 16 Painted bronze. Supplied with lamp and Multi-Tap HPF ballast wired 277V. 17 Specifications and dimensions subject to change without notice. 18 Products also available in non-US voltages and frequencies for international markets. 19 Consult your Cooper Lighting Representative for availability and ordering information.

