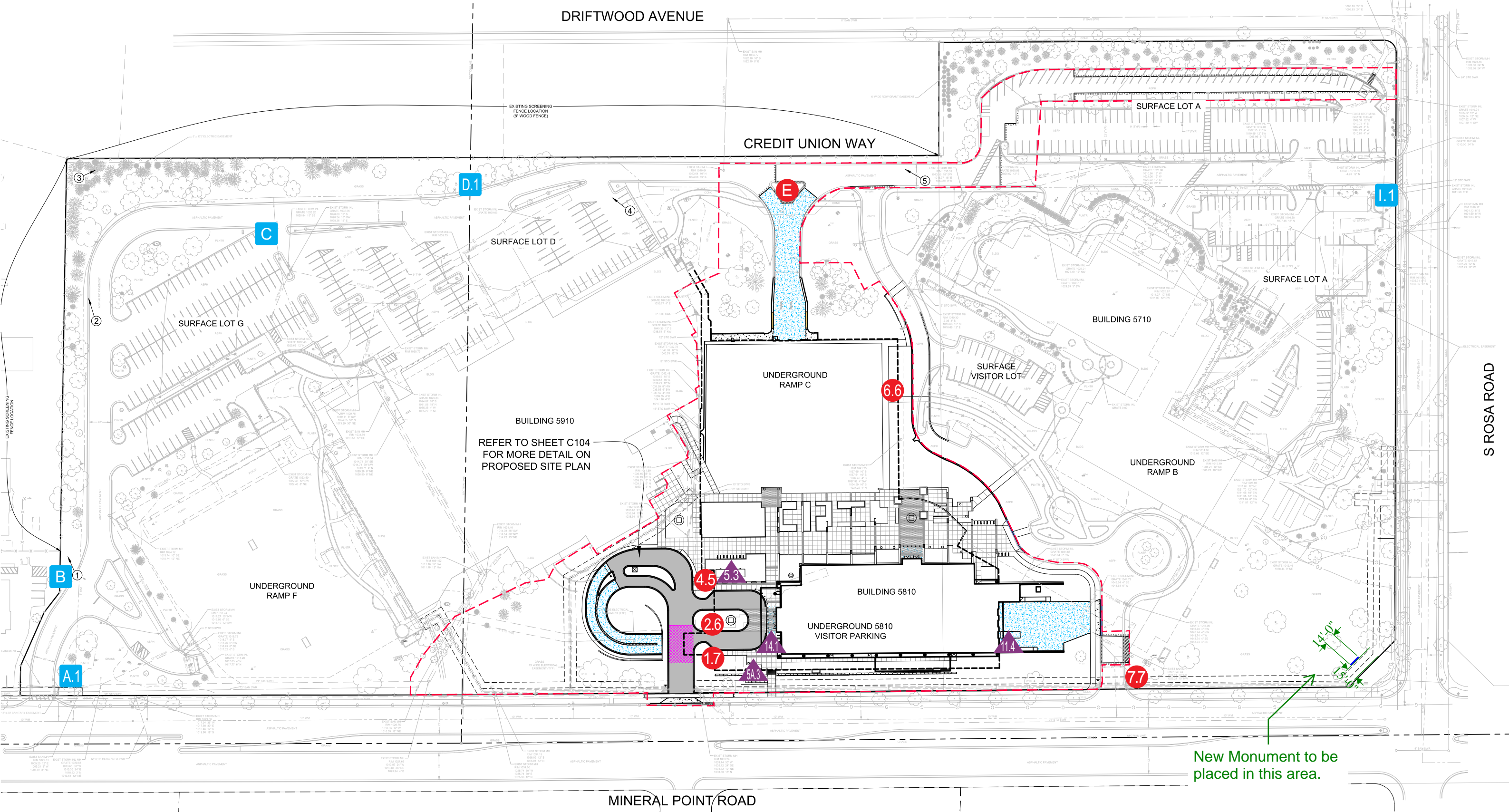
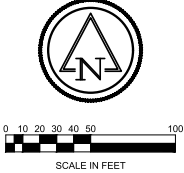


2023 Site Plan

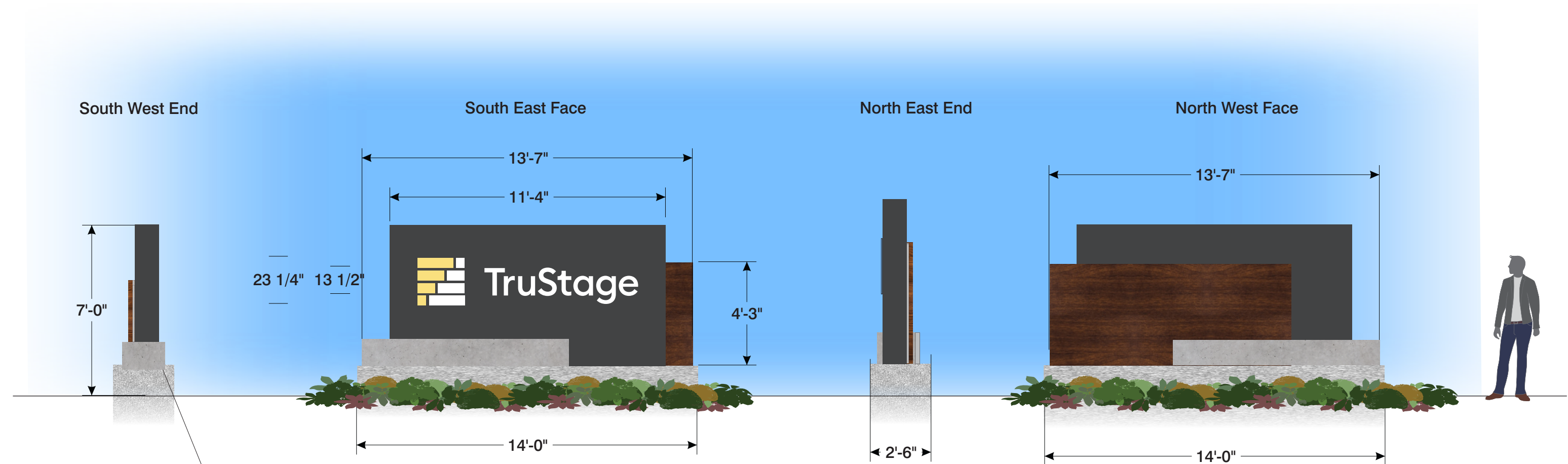


New 2023 Wayfinding Signage

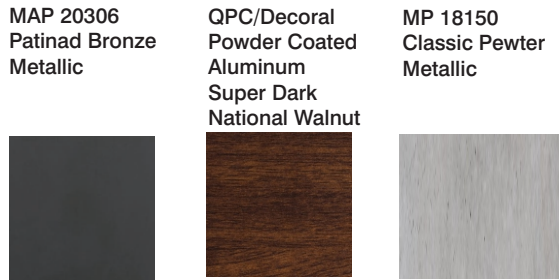
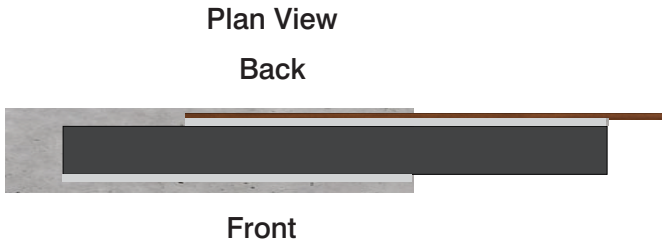
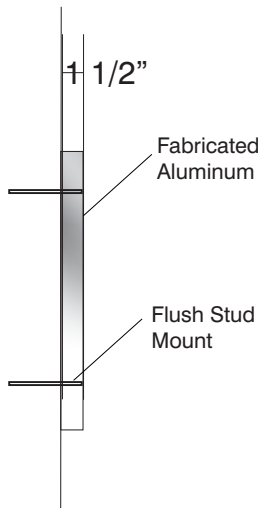
Installed Per 2/9/22 Approved CDR

Major Alteration to Approved CDR

2B.1 TruStage - New S/F Monument



Above Grade to Accommodate
LED Lighting Channels
Fabricated Aluminum w/
Rubbed Concrete Finish by JHF



Pantone 2002C

Wind Load
Compliance Statement:
Withstand up to 75
MPH Winds

Illumination Compliance
Statement:
White LEDs
Meets City of Madison
Maximum Requirements

Construction:
Aluminum Cabinet w/ Fabricated
Letters w/ Composite Material,
Simulated Concrete on Concrete
Base

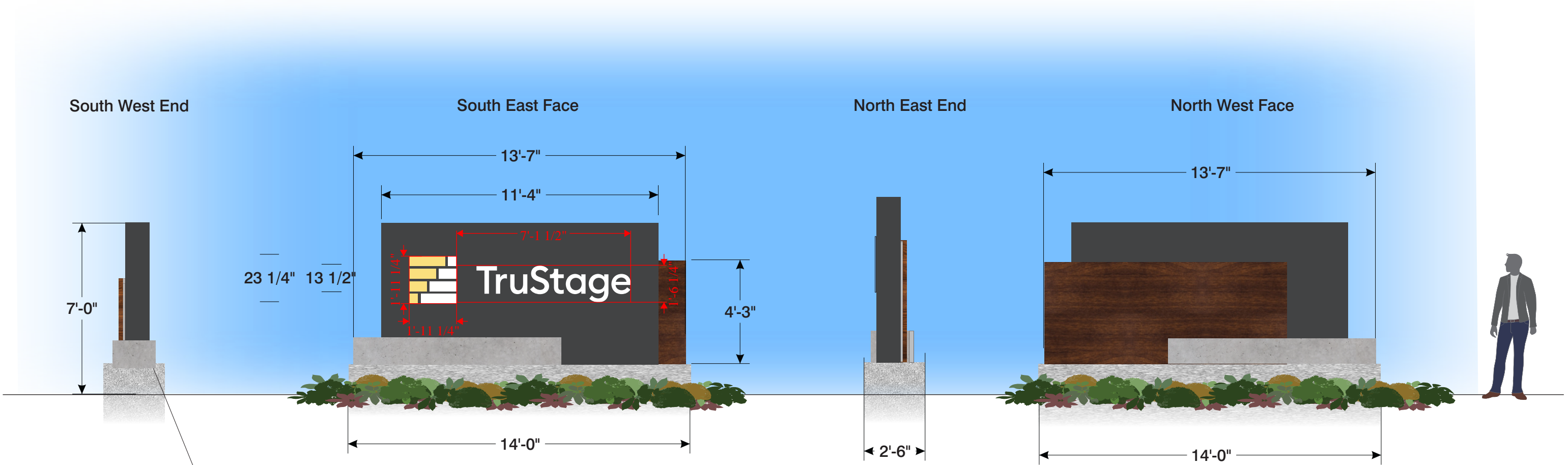
Print to Scale on 11" x 17" Paper

Ryan Signs, Inc. 3007 Perry Street • Madison, WI 53713 • Tel (608) 271-7979 • Fax (608) 271-7853	SCALE: 1/4" = 1'.0" DATE: 9/23/24 REVISED: 8/14/25 DRAWN BY: KW	APPROVED: Copyright 2024 by Ryan Signs, Inc.
TRUSTAGE - CMFG5710		DRAWING NUMBER: 7953
<small>These plans are the exclusive property of Ryan Signs, Inc. and are the result of the original design work of its employees. They are submitted to you or your company for the sole purpose of your consideration of whether to purchase from Ryan Signs, Inc., Madison, Wisconsin a sign designed and manufactured according to these plans. Distribution or exhibition of these plans to anyone other than employees of your company or use of these plans to construct a sign similar to the one embodied herein is expressly prohibited. In the event that such use, distribution or exhibition occurs, the undersigned expressly agrees to pay to Ryan Signs, Inc. the sum of 25% of our purchase price as quoted to you. This covenant of payment is acknowledged to be compensation for the time, effort and talent devoted to the preparation of the plans.</small>		
client signature		

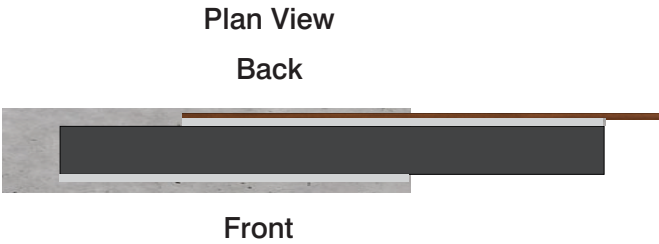
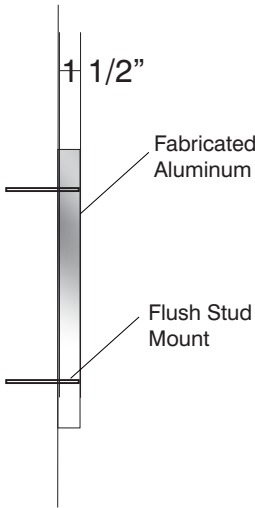
2B.1 TruStage - New S/F Monument

Overall Sign Measurements: 7' x 14' = 98 sqft
Logo: 2' x 2' = 4 sqft
Letters: 1.52' x 7.125' = 10.83
Total: 14.83 square feet

CALCULATIONS PAGE



Above Grade to Accommodate
LED Lighting Channels
Fabricated Aluminum w/
Rubbed Concrete Finish by JHF



MAP 20306
Patinad Bronze
Metallic

QPC/Decoral
Powder Coated
Aluminum
Super Dark
National Walnut

MP 18150
Classic Pewter
Metallic

Pantone 2002C

Wind Load
Compliance Statement:
Withstand up to 75
MPH Winds

Illumination Compliance
Statement:
White LEDs
Meets City of Madison
Maximum Requirements

Construction:
Aluminum Cabinet w/ Fabricated
Letters w/ Composite Material,
Simulated Concrete on Concrete
Base

Print to Scale on 11" x 17" Paper

Ryan Signs, Inc.
3007 Perry Street • Madison, WI 53713 • Tel (608) 271-7979 • Fax (608) 271-7853

TRUSTAGE - CMFG5710

These plans are the exclusive property of Ryan Signs, Inc. and are the result of the original design work of it's employees. They are submitted to you or your company for the sole purpose of your consideration of whether to purchase from Ryan Signs, Inc., Madison, Wisconsin a sign designed and manufactured according to these plans. Distribution or exhibition of these plans to anyone other than employees of your company or use of these plans to construct a sign similar to the one embodied herein is expressly prohibited. In the event that such use, distribution or exhibition occurs, the undersigned expressly agrees to pay to Ryan Signs, Inc. the sum of 25% of our purchase price as quoted to you. This covenant of payment is acknowledged to be compensation for the time, effort and talent devoted to the preparation of the plans.

client signature _____

SCALE: 1/4" = 1'.0"	APPROVED: _____
DATE: 9/23/24	Copyright 2024 by Ryan Signs, Inc.
REVISED: 8/14/25	DRAWING NUMBER: 7953
DRAWN BY: KW	