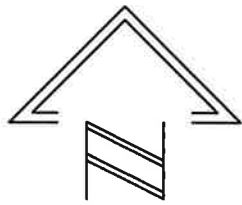


CERTIFIED SURVEY MAP NO. _____

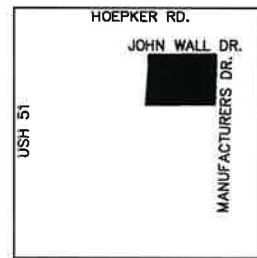
All of Lots 21, 22, 23, 32, 33 and 34 in the Center for Industry and Commerce Subdivision in the Northeast 1/4 of the Northwest 1/4 of Section 16, Township 8 North, Range 10 East, in the City of Madison, Dane County, Wisconsin.

GRAEF

One Honey Creek Corporate Center
125 South 84th Street, Suite 401
Milwaukee, WI 53214-1469
414 / 259 1500
414 / 259 0037 fax
www.graef-usa.com

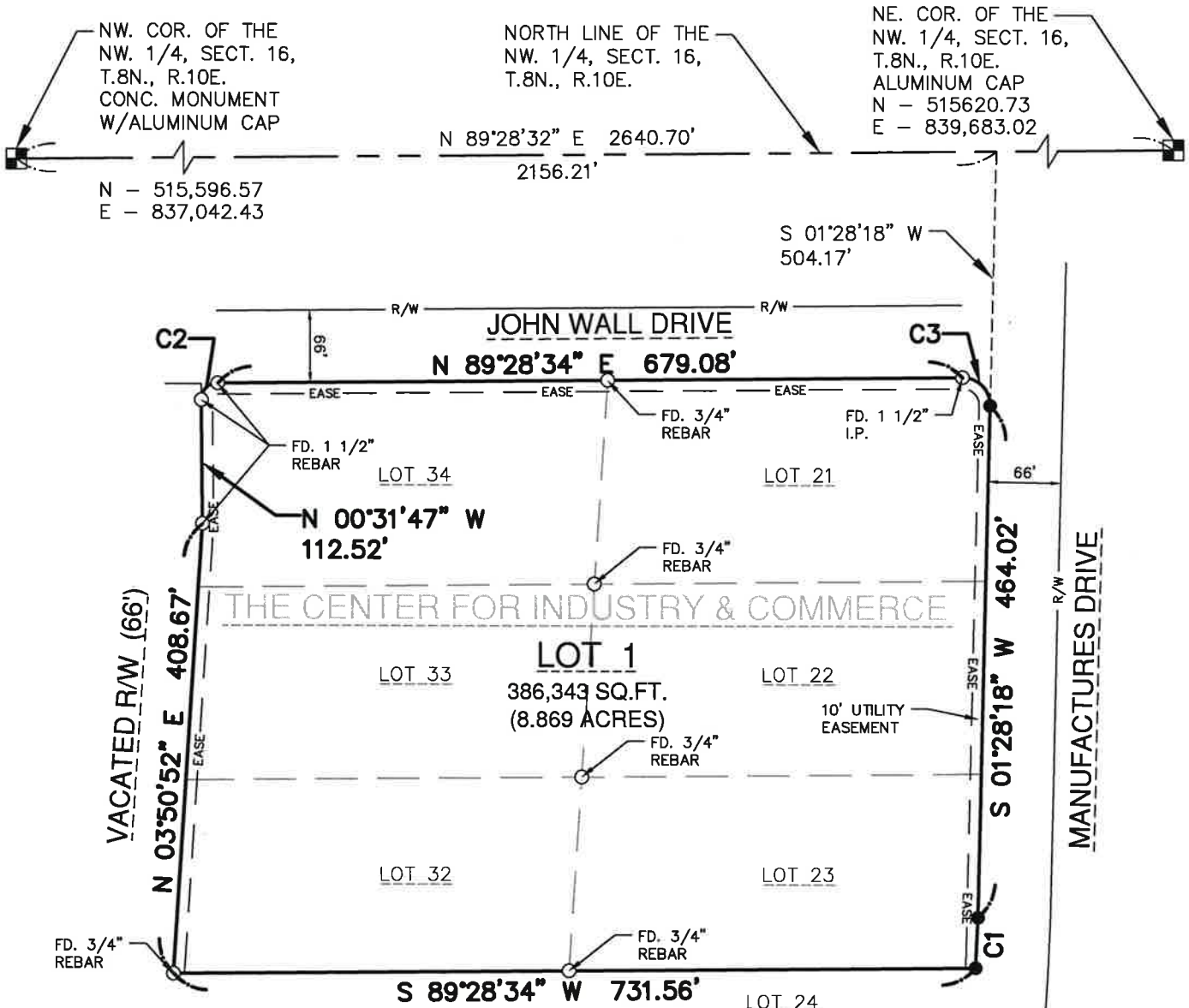


0 75' 150'
SCALE: 1" = 150'



1" = 1000'

NW. 1/4, SECT. 16, T.8N., R.10E.
LOCATION MAP



REFERENCE BEARING LOT 31
All bearings are referenced to the north line of the NW. 1/4 of Sect. 16, T.8N. R.10E. which bears N.89°28'32"E. and is referenced to The Wisconsin County Coordinate System, Dane County, NAD83(2011), Geo12A.

OWNER
City of Madison
210 Martin Luther King Jr. Drive
Madison, Wisconsin 53703

MAP NO. _____
DOCUMENT NO. _____
VOLUME _____ PAGE _____

C1	DEL. = 217'51"	C3	DEL. = 92'00'36"
TAN. = 22.74'	TAN. = 25.89'		
RAD. = 1134.00'	RAD. = 25.00'		
LEN. = 45.47'	LEN. = 40.15'		
CHD. = 45.47'	CHD. = 35.97'		
C.B. = S 02°37'13" W	C.B. = S 44°31'34" E		
C2	DEL. = 90°03'57"		
TAN. = 15.02'	RAD. = 15.00'		
LEN. = 23.58'	CHD. = 21.23'		
C.B. = N 44°27'36" E			

LEGEND

- 3/4" REBAR SET, MINIMUM WEIGHT 1.13 LBS/FT.



