

# CROSSWINDS @ HAWKS LANDING

## BUILDINGS 4 & 5 - 16 CONDOMINIUM UNITS EACH BLDG

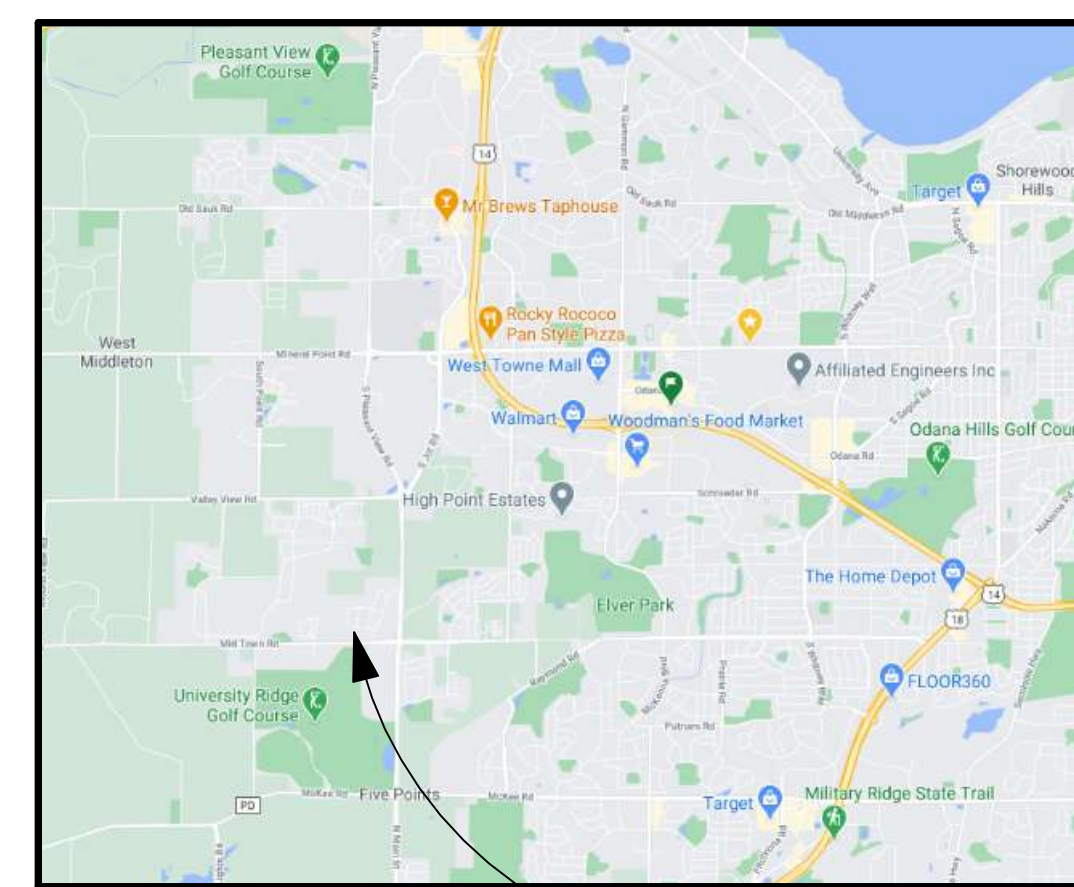
9237 - 9249 CROSSWINDS LANE  
MADISON, WISCONSIN 53593



### PLAN INDEX

SHT NO.	SHEET NAME
<b>GENERAL</b>	
G101	COVER SHEET
<b>CIVIL</b>	
C-100	SITE PLAN
C-101	GRADING & EROSION CONTROL
C-102	SITE UTILITY PLAN
<b>LANDSCAPE</b>	
L-100	LANDSCAPE PLAN
<b>ARCHITECTURAL</b>	
A101	LOWER LEVEL OVERALL PLAN
A102	UPPER PARKING LEVEL OVERALL PLAN
A111	FIRST FLOOR OVERALL PLAN
A121	SECOND FLOOR OVERALL PLAN
A131	THIRD FLOOR OVERALL PLAN
A141	FOURTH FLOOR OVERALL PLAN
A151	ROOF OVERALL PLAN
A201C	COLOR EXTERIOR ELEVATIONS
A202C	COLOR EXTERIOR ELEVATIONS
A203C	COLOR EXTERIOR ELEVATIONS
A204C	COLOR EXTERIOR ELEVATIONS

### PROJECT LOCATION



VICINITY LOCATION

### PROJECT DIRECTORY

DEVELOPER	CIVIL ENGINEER	ARCHITECT	CONTRACTOR
<b>GORMAN &amp; COMPANY, LLC.</b> 200 NORTH MAIN STREET OREGON, WI 53575 VOICE (608) 835-3900	<b>RONALD R. KLAAS, P.E.</b> D'ONOFRIO KOTTKE AND ASSOCIATED 7530 WESTWARD WAY MADISON, WISCONSIN 53717 VOICE (608) 833-7530	<b>PATRICK PATRELO JR.</b> 200 NORTH MAIN STREET OREGON, WI 53575 VOICE (608) 835-6339 FAX (608) 835-3344	<b>GORMAN &amp; COMPANY GENERAL CONTRACTORS, LLC</b> RON SWIGGUM 200 NORTH MAIN STREET OREGON, WI 53575 VOICE (608) 835-5573 FAX (608) 835-5578

### LAND USE TABLE

SITE AREA	54984 SQ. FT
BLDG FOOTPRINT SF	7890 SF X 2 = 15780 SQ. FT
LOT COVERAGE	15780 SQ. FT / 54984 SQ. FT = 28.7%
BUILDING GROSS SF	47263 SQ. FT EACH
<b>PROPOSED 32 DWELLING UNITS</b>	
(16) 2 BEDROOM + DEN UNITS	1705 SQ. FT EACH
(16) 3 BEDROOM UNITS	1945 SQ. FT EACH
USEABLE OPEN SPACE AREA	10250 SQ. FT
LANDSCAPE AREA	15300 SQ. FT
PAVED AREA	13650 SQ. FT
PARKING PROPOSED	13 SURFACE & 32 COVERED
BIKE PARKING	32 (LABELED AS STORAGE CLOSETS)

### SET ISSUE

#### APPROVED FOR:

- PLANNING APPROVAL**
- PERMIT APPLICATION**
- BIDDING**
- CONSTRUCTION**

**CROSSWINDS @ HAWK'S LANDING**  
BUILDINGS 4 & 5 - 16 CONDOMINIUM UNITS EACH BLDG  
9237 - 9249 CROSSWINDS LANES  
MADISON, WISCONSIN 53593

Issue Dates:	
DATE	DESCRIPTION
2021.01.06	ALTERATION TO PD

Project No.	Project Number
Plot Date:	2021.01.06 12:08:43
Drawn by:	crd
Checked by:	pp
Approved by:	Conceptual
Sheet Title	COVER SHEET

Sheet No.  
**G101**



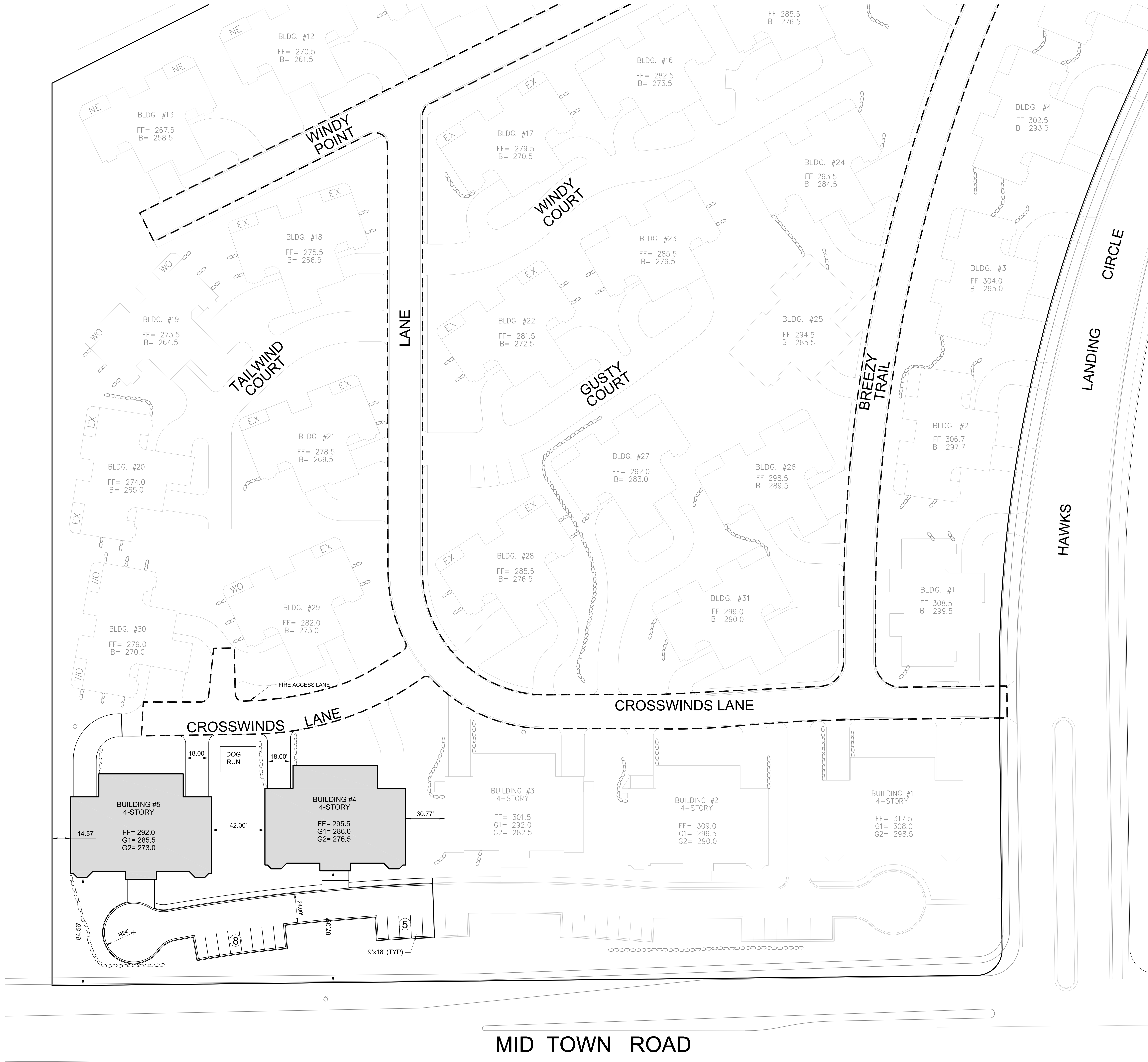
**CROSSWINDS @ HAWKS LANDING**  
BUILDINGS 4 & 5 - 16 CONDOMINIUM UNITS EACH BLDG  
9237-9249 CROSSWINDS LANE  
MADISON, WISCONSIN 53593

Issue Dates:	
DATE	DESCRIPTION

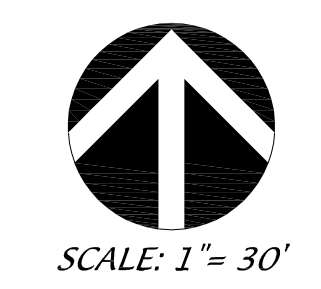
Project No.	
Plot Date:	2021/01/06
Drawn by:	DKA
Checked by:	
Approved by:	

Sheet Title  
SITE PLAN

Sheet No.  
**C-100**



MID TOWN ROAD



SCALE: 1"= 30'



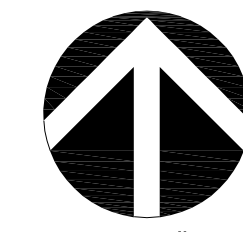
**CROSSWINDS @ HAWKS LANDING**  
BUILDINGS 4 & 5 - 16 CONDOMINIUM UNITS EACH BLDG  
9237-9249 CROSSWINDS LANE  
MADISON, WISCONSIN 53593

Issue Dates:	
DATE	DESCRIPTION

Project No.	
Plot Date:	2021/01/06
Drawn by:	DKA
Checked by:	
Approved by:	

Sheet Title  
**GRADING & EROSION  
CONTROL PLAN**

Sheet No.  
**C-101**



SCALE: 1" = 30'

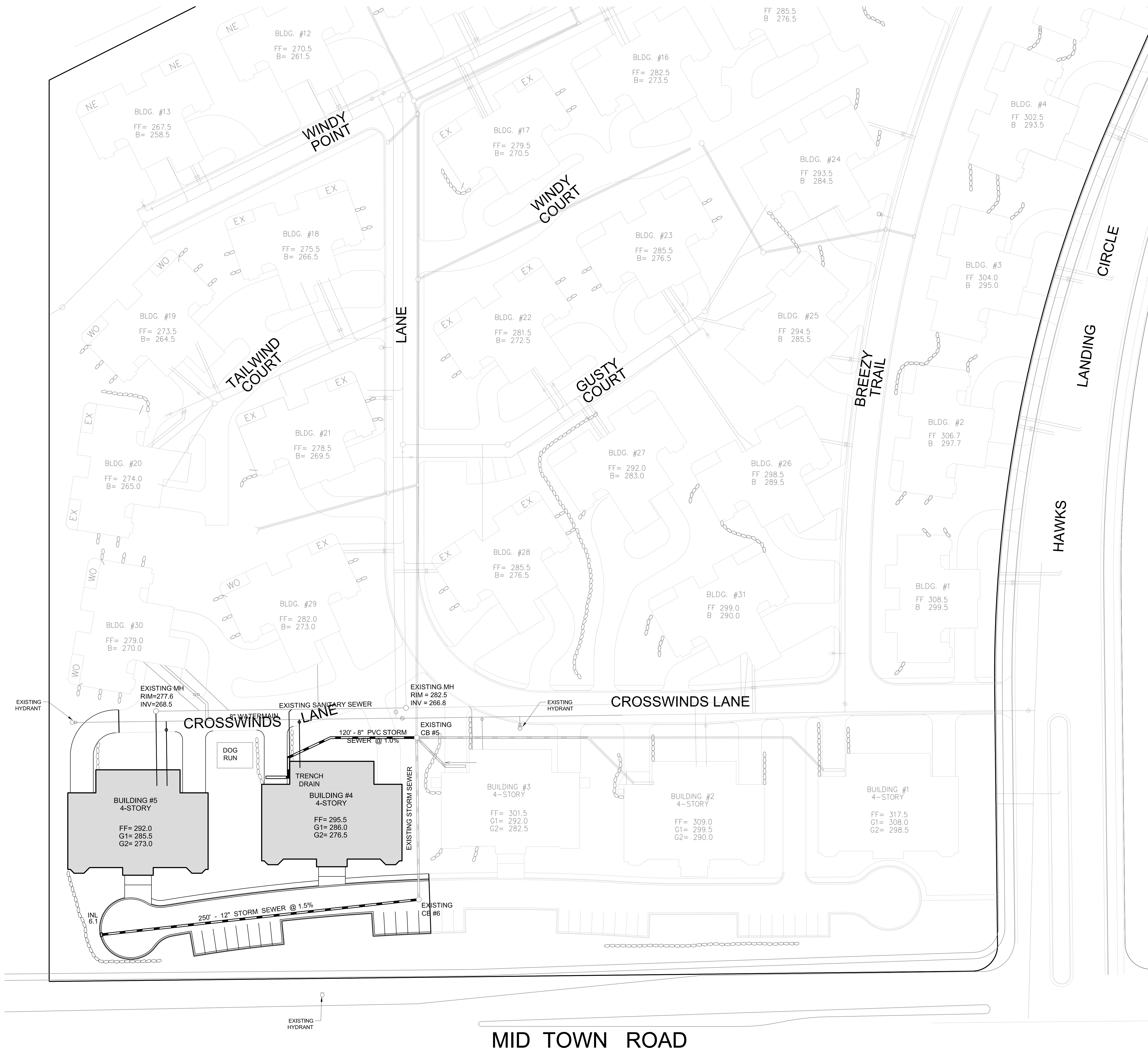


**CROSSWINDS @ HAWKS LANDING**  
BUILDINGS 4 & 5 - 16 CONDOMINIUM UNITS EACH BLDG  
9237-9249 CROSSWINDS LANE  
MADISON, WISCONSIN 53593

Issue Dates:	
DATE	DESCRIPTION

Project No.	
Plot Date:	2021/01/06
Drawn by:	DKA
Checked by:	
Approved by:	

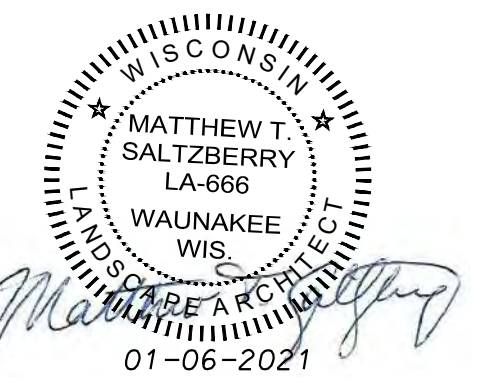
Sheet Title	UTILITY PLAN
-------------	--------------



SCALE: 1" = 30'

MID TOWN ROAD





**CROSSWINDS @ HAWKS LANDING**  
BUILDINGS 4 & 5 - 16 CONDOMINIUM UNITS EACH BLDG  
9237-9249 CROSSWINDS LANE  
MADISON, WISCONSIN 53593

Issue Dates:  
DATE DESCRIPTION

Project No.  
Plot Date: 2021/01/06  
Drawn by: DKA  
Checked by:  
Approved by:

Sheet Title  
LANDSCAPE PLAN

Sheet No.  
**L-100**

**LANDSCAPE NOTES**

- CONTACT DIGGER'S HOTLINE 3 WORKING DAYS PRIOR TO THE START OF CONSTRUCTION
- CONTRACTOR SHALL VERIFY THE LOCATION OF ALL THE PRIVATE UTILITIES PRIOR TO THE START OF WORK
- ALL LANDSCAPE BEDS SHALL CONTAIN A 3" DEPTH 1-INCH LOCAL WASHED STONE OVER FILTER FABRIC CONTAINED BY LANDSCAPE EDGING UNLESS OTHERWISE NOTED
- ALL GENERAL LANDSCAPE AREAS SHALL HAVE A MINIMUM 6" DEPTH OF COMPACTED TOPSOIL
- LANDSCAPE BEDS SHALL HAVE A 6" MINIMUM DEPTH OF COMPACTED TOPSOIL
- LANDSCAPE EDGING SHALL BE BLACK DIAMOND VINYL EDGING AS MANUFACTURED BY VALLEY VIEW INDUSTRIES (www.valleyviewind.com)
- ALL DECIDUOUS TREES IN TURF AREAS SHALL HAVE A 5' DIAMETER CIRCLE OF 3" DEPTH SHREDDED HARDWOOD BARK MULCH CONTAINED BY LANDSCAPE EDGING UNLESS INDICATED DIFFERENTLY ON THE PLANS
- ALL EVERGREEN TREES IN TURF AREAS SHALL HAVE A 8' DIAMETER CIRCLE OF 3" DEPTH SHREDDED HARDWOOD BARK MULCH CONTAINED BY LANDSCAPE EDGING UNLESS INDICATED DIFFERENTLY ON THE PLANS
- GENERAL LANDSCAPE AREAS SHALL BE SEEDED WITH MADISON PARKS SEED MIX AS MANUFACTURED BY LA GROSSE SEED, LLC. PER MANUFACTURER'S SPECIFICATIONS
- LANDSCAPE FABRIC SHALL BE MIRAFI 140N OR APPROVED EQUAL
- ALL LANDSCAPING SHALL BE IN ACCORDANCE WITH THE CITY OF SUN PRAIRIE REQUIREMENTS, STANDARDS & ORDINANCES.
- INSTALLATION OF LANDSCAPING SHALL INCLUDE A 1 YEAR LANDSCAPE MAINTENANCE & WARRANTY PERIOD. LANDSCAPE MAINTENANCE SHALL INCLUDE ANY CARE NECESSARY TO ESTABLISH THE PLANTS CALLED OUT ON THE LANDSCAPE PLAN. LANDSCAPE WARRANTY SHALL INCLUDE THE REPLACEMENT OF ANY DAMAGED, DYING, OR DEAD PLANTS THAT HAVE BEEN INSTALLED AS PART OF THIS PROJECT AS CALLED OUT ON THE LANDSCAPE PLAN

**LANDSCAPE REQUIREMENTS SUMMARY**

**DEVELOPED AREA REQUIREMENT:**  
5 POINTS PER 300 SF OF DEVELOPED AREA  
DEVELOPED AREA = 15,150 SQ FT  
TOTAL POINTS REQUIRED = 252 POINTS  
POINTS PROVIDED = 1,331 POINTS

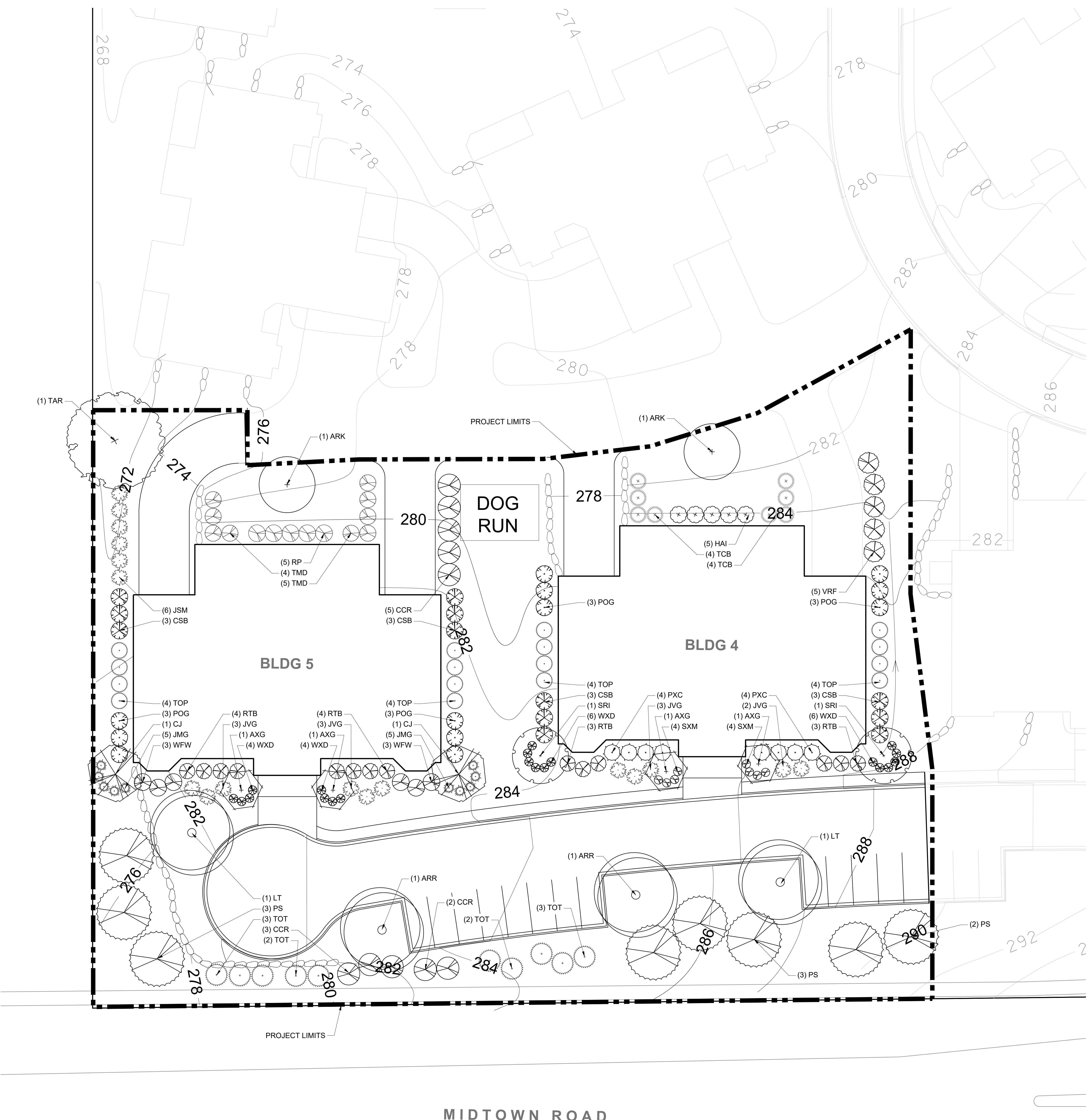
**STREET FRONTAGE REQUIREMENT:**  
1 OVERSTORY TREE OR 2 EVERGREEN / ORNAMENTAL & 5 SHRUB PER 30 LF

**MIDTOWN ROAD FRONTAGE = 300 FT**  
PLANTS REQUIRED = 10 OVERSTORY TREES OR  
20 EVERGREEN / ORNAMENTAL TREES  
50 SHRUBS  
PLANTS PROVIDED = 4 OVERSTORY TREES  
12 EVERGREEN / ORNAMENTAL TREES  
50 SHRUBS

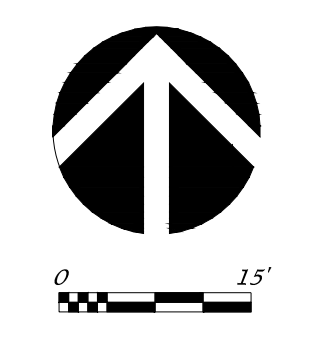
**PARKING LOT LANDSCAPING REQUIREMENT:**  
1 OVERSTORY TREE OR 2 ORNAMENTAL TREES PER 160 SQ FT OF REQUIRED AREA  
TOTAL PARKING LOT AREA = 13,644 SQ FT  
REQUIRED LANDSCAPED AREA = 1,092 SQ FT (8% TOTAL PARKING LOT AREA)  
LANDSCAPED AREA PROVIDED = 1,092 SQ FT  
OVERSTORY TREES REQUIRED = 7 OVERSTORY TREES  
OVERSTORY TREES PROVIDED = 7 OVERSTORY TREES

**PLANT SCHEDULE**

CODE/SCIENTIFIC NAME	COMMON NAME	QTY	PTS PER PLANT	SUB-TOTAL	SIZE	ROOT COND	NOTES
<b>OVERSTORY DECIDUOUS TREES</b>							
ARK <i>Acer rubrum</i> 'Karpick'	Karpick Maple	2	35	70	2.5'	B&B	
ARR <i>Acer rubrum</i> 'Redpointe'	Redpointe Maple	2	35	70	2.5'	B&B	
LT <i>Liriodendron tulipifera</i> 'JFS-Oz'	Emerald City Tulip Poplar	2	35	70	2.5'	B&B	
TAR <i>Tilia americana</i> 'Redmond'	Redmond Linden	1	35	35	2.5'	B&B	
<b>TALL EVERGREEN TREES</b>							
PS <i>Pinus strobus</i>	Eastern White Pine	8	35	280	6' TALL	B&B	
<b>ORNAMENTAL TREE</b>							
AXG <i>Amelanchier</i> 'Grandiflora'	Autumn Brilliance Serviceberry	4	15	60	1.5'	B&B	
CJ <i>Cercidypylum japonica</i>	Katsura Tree	2	15	30	1.5'	B&B	
SRI <i>Syringa reticulata</i> 'Ivory Silk'	Ivory Silk Lilac Tree	2	15	30	1.5'	B&B	
<b>UPRIGHT EVERGREEN SHRUB</b>							
TOP <i>Thuja occidentalis</i> 'Pyramidal'	Pyramidal Arborvitae	16	10	160	4' TALL	POT	
TOT <i>Thuja occidentalis</i> 'Tectry'	Tectry Arborvitae	10	10	100	4' TALL	POT	
<b>DECIDUOUS SHRUB</b>							
CCR <i>Cotinus coggygria</i> 'Royal Purple'	Royal Purple Smokebush	10	3	30	24" TALL	POT	
CSB <i>Cornus sericea</i> 'Bailhalo'	Ivory Halo Dogwood	12	3	36	24" TALL	POT	
HAI <i>Hydrangea arborescens</i> 'Incredibal Blush'	Incredibal Blush Hydrangea	5	3	15	18" TALL	POT	
PXC <i>Prunus x cistena</i>	Purple Sand Cherry	8	3	24	18" TALL	POT	
POG <i>Physocarpus opulifolius</i> 'Dart's Gold'	Dart's Gold Ninebark	12	3	36	24" TALL	POT	
RTB <i>Rhus typhina</i> 'Baltiger'	Tiger Eyes Sumac	14	3	42	24" TALL	POT	
SXM <i>Spiraea</i> 'Magic Carpet'	Magic Carpet Spiraea	8	3	24	12" TALL	POT	
VRG <i>Viburnum</i> 'Forest Rouge'	Forest Rouge Viburnum	5	3	15	24" TALL	POT	
WFW <i>Weigela florida</i> 'Wine and Roses'	Wine and Roses Weigela	6	3	18	12" TALL	POT	
WXD <i>Weigela</i> 'Dark Horse'	Dark Horse Weigela	20	3	60	12" TALL	POT	
<b>EVERGREEN SHRUB</b>							
JVG <i>Juniperus virginiana</i> 'Grey Owl'	Grey Owl Juniper	11	4	44	18" TALL	POT	
JSB <i>Juniperus scopulorum</i> 'Moon Glow'	Moon Glow Juniper	6	4	24	6" TALL	POT	
JXS <i>Juniperus</i> 'Sea of Gold'	Sea of Gold Juniper	10	4	40	6" TALL	POT	
RH <i>Rhododendron</i> 'P.M'	P.M Rhododendron	5	4	20	24" TALL	POT	
TCB <i>Tsuga canadensis</i> 'Bennett'	Bennett Hemlock	8	4	32	24" TALL	POT	
TMD <i>Taxus x media</i> 'Densiformis'	Densiformis Yew	9	4	36	24" TALL	POT	
		<b>TOTAL:</b>		<b>1331</b>	<b>POINTS</b>		



MIDTOWN ROAD





**CROSSWINDS @ HAWK'S LANDING**  
BUILDINGS 4 & 5 - 16 CONDOMINIUM UNITS EACH BLDG  
9237 - 9249 CROSSWINDS LANES  
MADISON, WISCONSIN 53593

Issue Dates:

DATE	DESCRIPTION
2021.01.06	ALTERATION TO PD

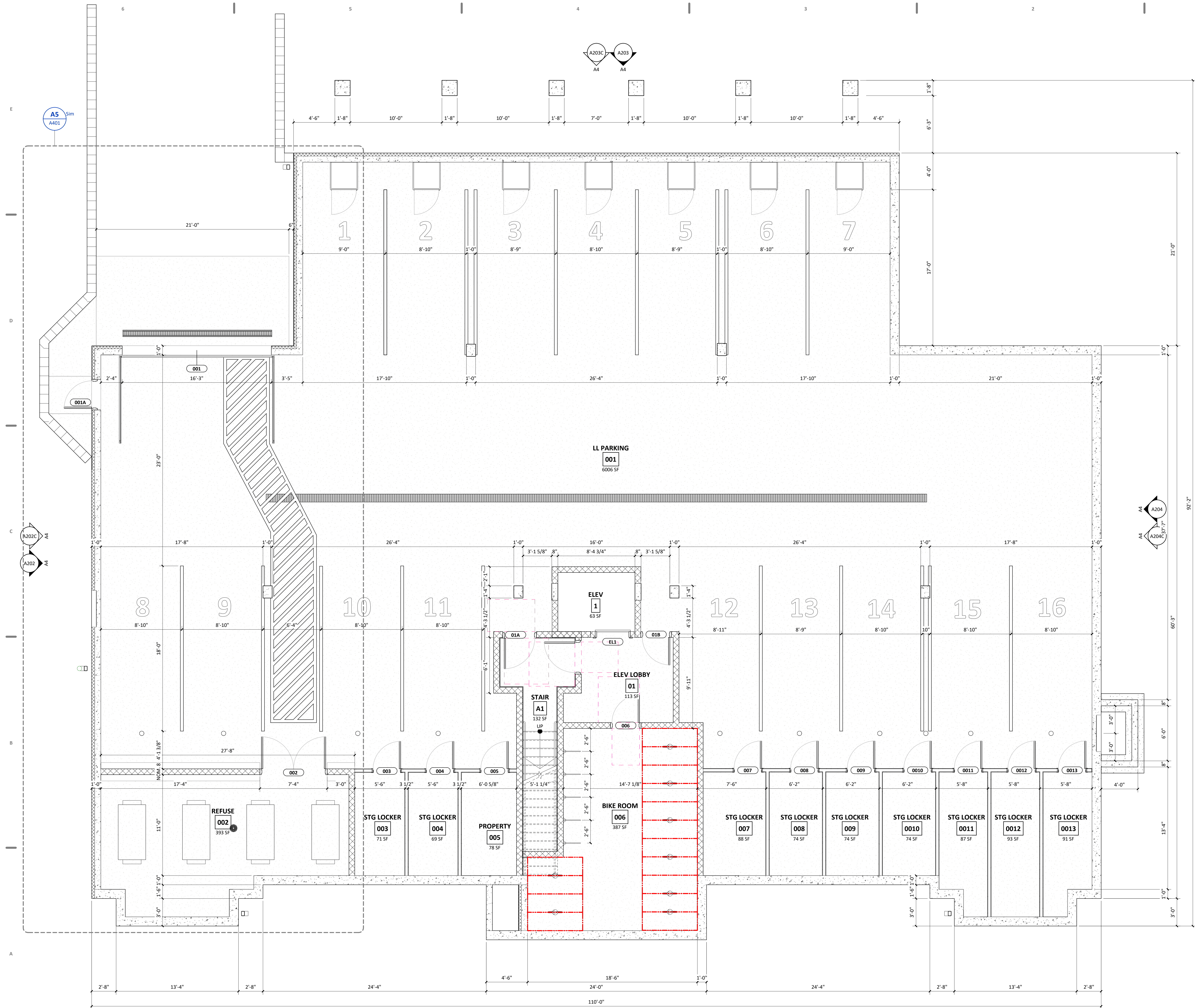
Project No.	Project Number
Plot Date:	2/23/2021 2:15:17 PM
Drawn by:	crd
Checked by:	pp
Approved by:	
Conceptual	

Sheet Title  
LOWER LEVEL OVERALL  
PLAN

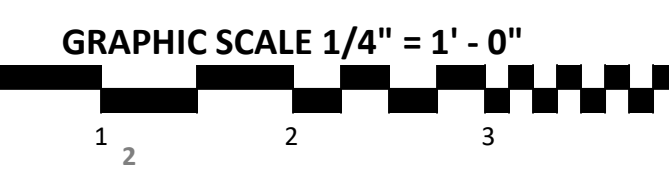
Sheet No.  
**A101**

Conceptual

C:\TempCAD\BLDG 4 v.1 (2020) \marsh\A101.rvt



**A3 LOWER PARKING LEVEL OVERALL PLAN**  
SCALE: 1/4" = 1'-0"





**CROSSWINDS @ HAWK'S LANDING**  
BUILDINGS 4 & 5 - 16 CONDOMINIUM UNITS EACH BLDG  
9237 - 9249 CROSSWINDS LANES  
MADISON, WISCONSIN 53593

Issue Dates:

DATE	DESCRIPTION
2021.01.06	ALTERATION TO PD

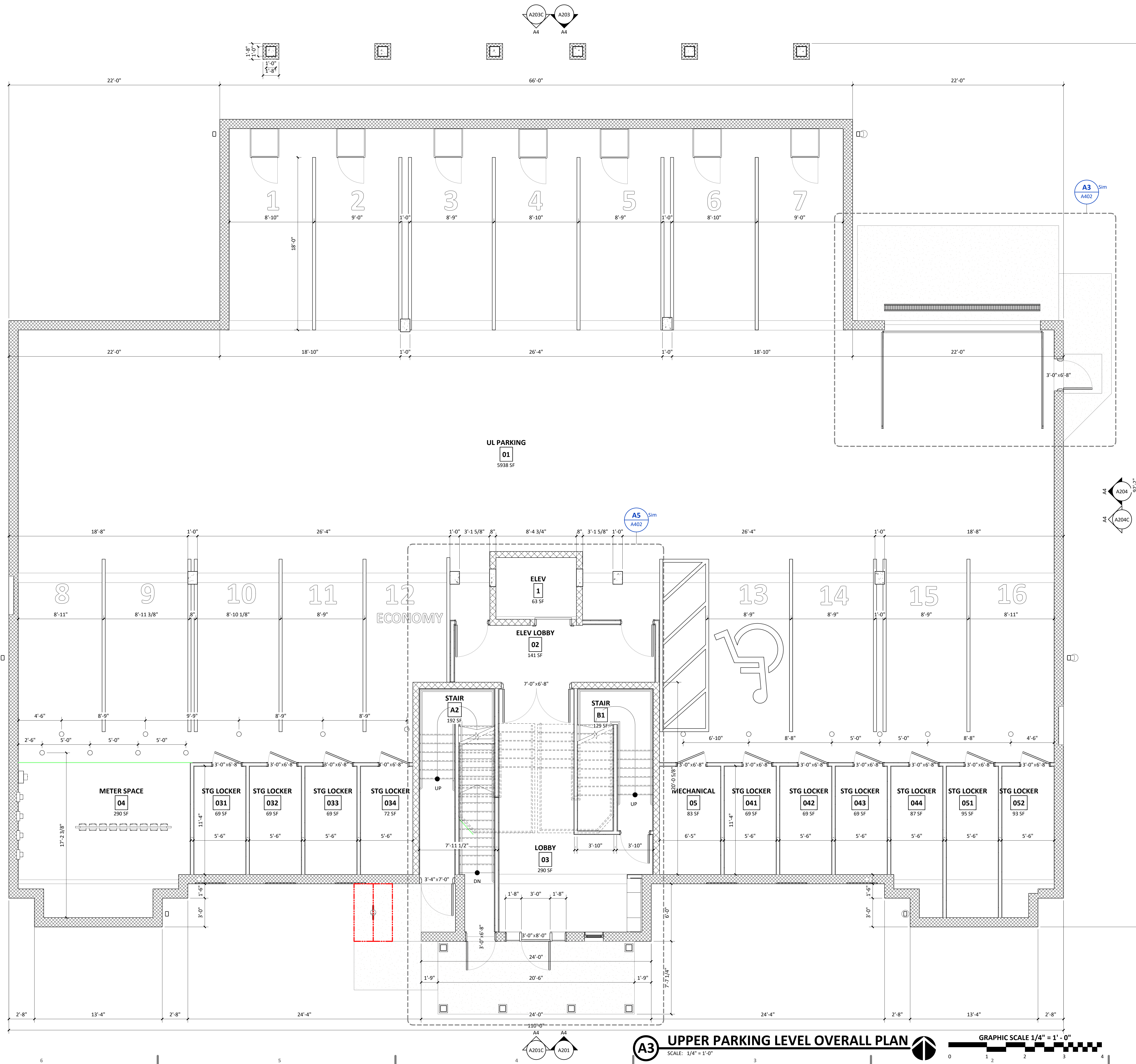
Project No.	Project Number
Plot Date:	2/23/2021 2:15:17 PM
Drawn by:	crd
Checked by:	pp
Approved by:	
Conceptual	

Sheet Title  
UPPER PARKING LEVEL  
OVERALL PLAN

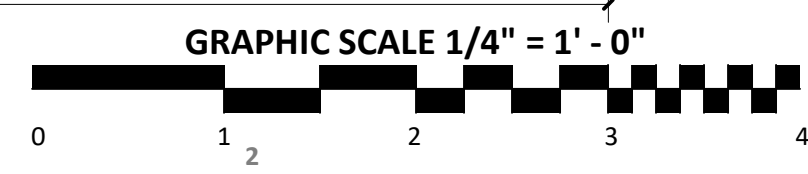
Sheet No.  
**A102**

Conceptual

C:\TempCAD\BLDG 4 v.1 (2020) \marshhall\ADK5F.rvt



**A3 UPPER PARKING LEVEL OVERALL PLAN**  
SCALE: 1/4" = 1'-0"





Issue Dates:

DATE	DESCRIPTION
2021.01.06	ALTERATION TO PD

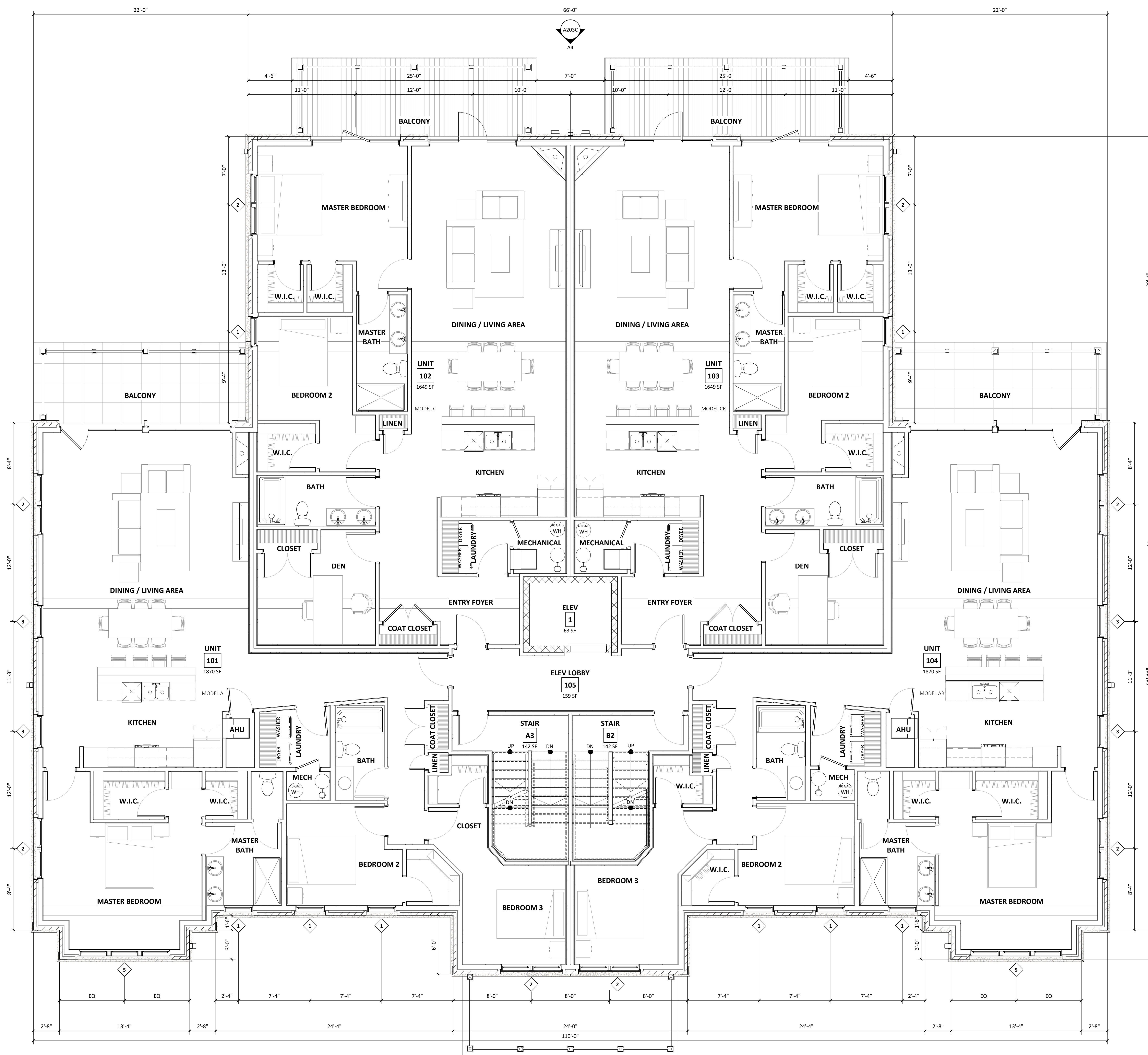
Project No.	Project Number
Plot Date:	2021.01.05 08:46:18
Drawn by:	crd
Checked by:	pp
Approved by:	
Conceptual	

Sheet Title  
FIRST FLOOR OVERALL PLAN

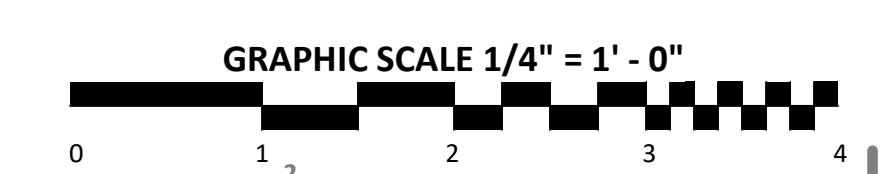
Sheet No.  
**A111**

**GENERAL PLAN NOTES**

1. DIMENSIONAL WOOD FRAMING - ALL EXTERIOR DIMENSIONS ARE FROM FACE OF SHEATHING TO FACE OF SHEATHING.
2. DIMENSIONAL WOOD FRAMING - OPENINGS ARE DIMENSIONED TO CENTER OF ROUGH OPENINGS - VERIFY RO'S PRIOR TO FRAMING.
3. DIMENSIONAL WOOD FRAMING - FLOORS HEIGHTS ARE DIMENSIONED TO ROUGH FLOOR ELEVATION (TOP OF FLOOR SHEATHING).
4. DIMENSIONAL WOOD FRAMING DEMISING (PARTY) WALLS ON THIS PLAN ARE DIMENSIONED TO CENTERLINE OF WALL U.N.O.
5. STRUCTURAL MASONRY CONSTRUCTION - ALL EXTERIOR DIMENSIONS ARE FROM FACE OF MASONRY TO FACE OF MASONRY.
6. STRUCTURAL MASONRY CONSTRUCTION - OPENINGS ARE DIMENSIONED AS MASONRY OPENINGS (MO'S) - VERIFY RO'S PRIOR TO MASONRY CONSTRUCTION.
7. SEE STRUCTURAL SHEETS FOR DIMENSIONS OF FOUNDATION WALLS & PRECAST PLANK
8. SEE STRUCTURAL SHEETS FOR STRUCTURAL ELEMENTS & ADDITIONAL INFORMATION
9. SEE ENLARGED SCALE PLANS FOR 1/4" SCALE PLANS FOR UNITS & COMMON AREAS
10. DOOR LOCATIONS ARE DOOR WIDTH PLUS 8 INCHES (4 INCHES EACH SIDE) TO ACCOUNT FOR TRIM U.N.O.
11. SEE SHEET A601 FOR COMMON ARE DOOR SCHEDULES
12. SEE SHEET A602 FOR COMMON AREA ROOM FINISH SCHEDULE



**1 FIRST FLOOR OVERALL PLAN**  
SCALE: 1/4" = 1'-0"



C:\TempCAD\BLDG 4 v.1 r2020 christopher\_dean.rvt

Conceptual



Issue Dates:

DATE	DESCRIPTION
2021.01.06	ALTERATION TO PD

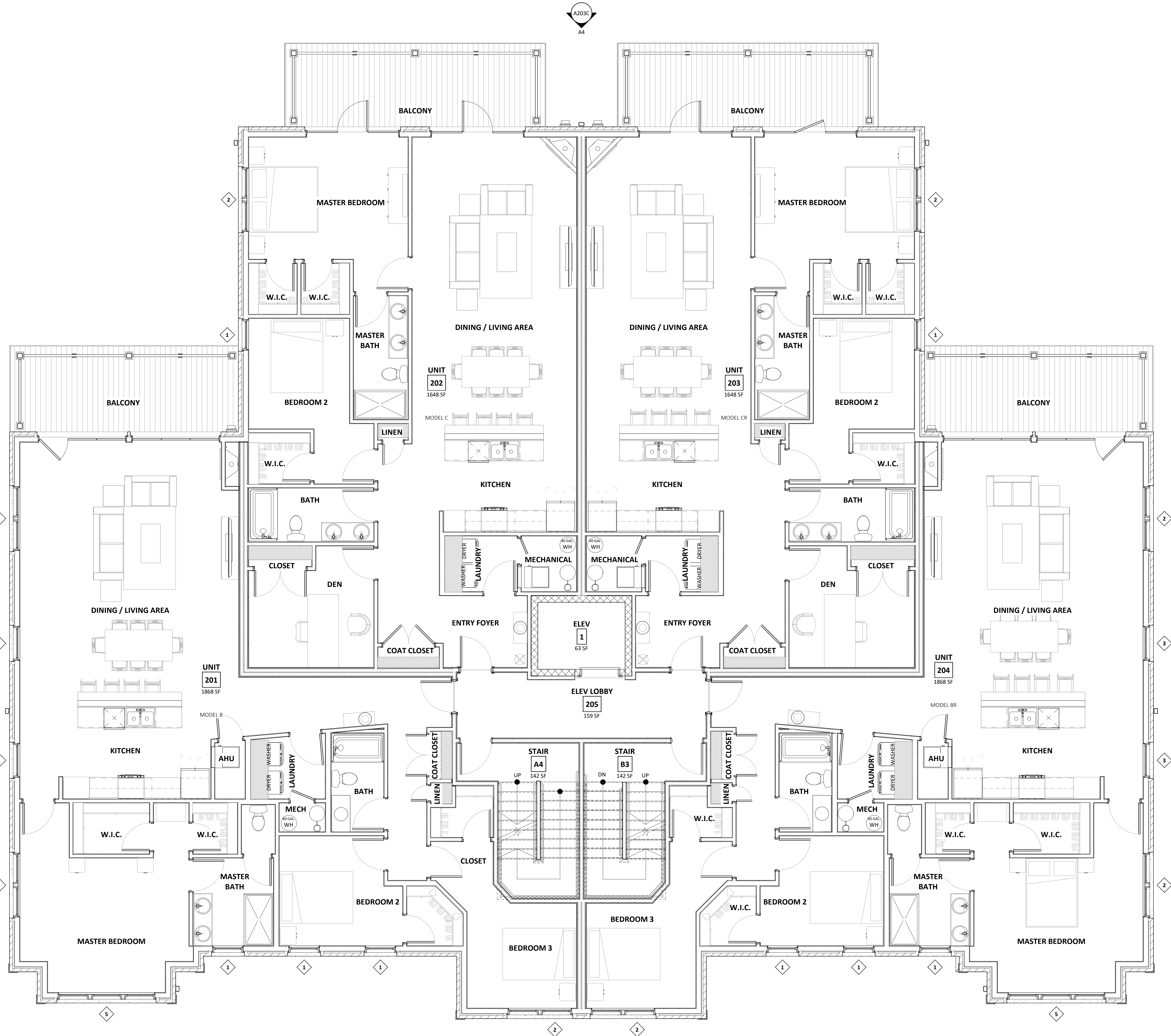
Project No.	Project Number
Plot Date:	2021.01.05 08:46:22
Drawn by:	crd
Checked by:	pp
Approved by:	
Conceptual	

Sheet Title  
SECOND FLOOR OVERALL  
PLAN

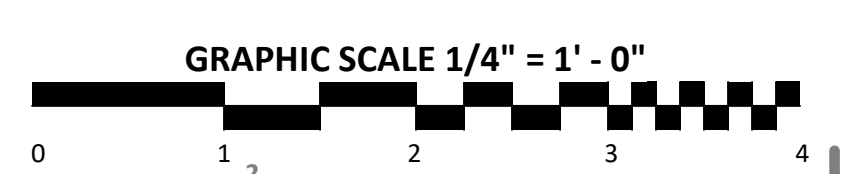
Sheet No.  
**A121**

**GENERAL PLAN NOTES**

1. DIMENSIONAL WOOD FRAMING - ALL EXTERIOR DIMENSIONS ARE FROM FACE OF SHEATHING TO FACE OF SHEATHING.
2. DIMENSIONAL WOOD FRAMING - OPENINGS ARE DIMENSIONED TO CENTER OF ROUGH OPENINGS - VERIFY RO'S PRIOR TO FRAMING.
3. DIMENSIONAL WOOD FRAMING - FLOORS HEIGHTS ARE DIMENSIONED TO ROUGH FLOOR ELEVATION (TOP OF FLOOR SHEATHING).
4. DIMENSIONAL WOOD FRAMING DEMISING (PARTY) WALLS ON THIS PLAN ARE DIMENSIONED TO CENTERLINE OF WALL U.N.O.
5. STRUCTURAL MASONRY CONSTRUCTION - ALL EXTERIOR DIMENSIONS ARE FROM FACE OF MASONRY TO FACE OF MASONRY.
6. STRUCTURAL MASONRY CONSTRUCTION - OPENINGS ARE DIMENSIONED AS MASONRY OPENINGS (MO'S) - VERIFY RO'S PRIOR TO MASONRY CONSTRUCTION.
7. SEE STRUCTURAL SHEETS FOR DIMENSIONS OF FOUNDATION WALLS & PRECAST PLANK
8. SEE STRUCTURAL SHEETS FOR STRUCTURAL ELEMENTS & ADDITIONAL INFORMATION
9. SEE ENLARGED SCALE PLANS FOR 1/4" SCALE PLANS FOR UNITS & COMMON AREAS
10. DOOR LOCATIONS ARE DOOR WIDTH PLUS 8 INCHES (4 INCHES EACH SIDE) TO ACCOUNT FOR TRIM U.N.O.
11. SEE SHEET A601 FOR COMMON ARE DOOR SCHEDULES
12. SEE SHEET A602 FOR COMMON AREA ROOM FINISH SCHEDULE



**1 SECOND FLOOR OVERALL PLAN**  
SCALE: 1/4" = 1'-0"



C:\TempCAD\BLDG 4 v.1 r2020 christopher\_dean.rvt

Conceptual



**CROSSWINDS @ HAWK'S LANDING**  
BUILDINGS 4 & 5 - 16 CONDOMINIUM UNITS EACH BLDG  
9237 - 9249 CROSSWINDS LANES  
MADISON, WISCONSIN 53593

Issue Dates:

DATE	DESCRIPTION
2021.01.06	ALTERATION TO PD

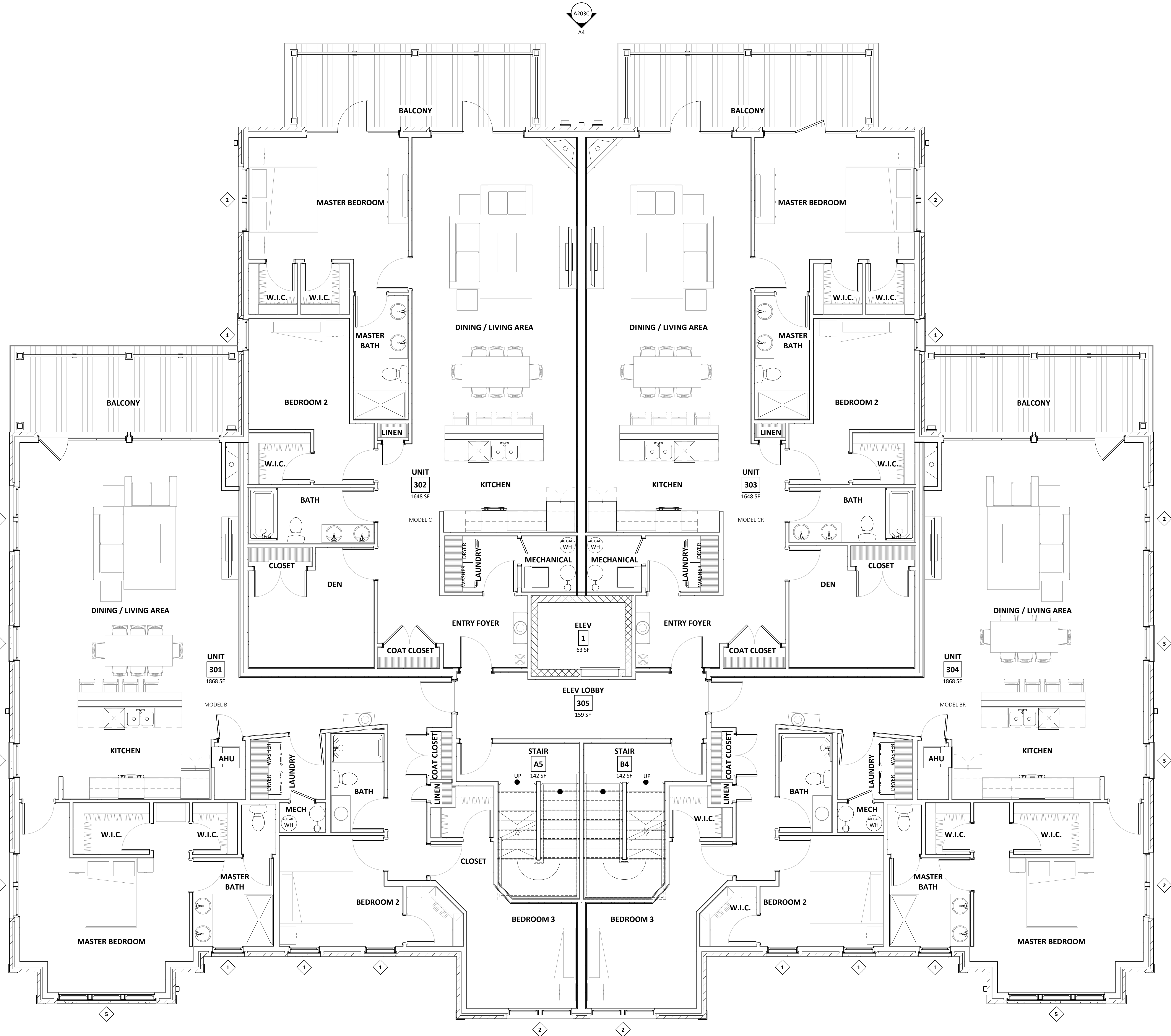
Project No.	Project Number
Plot Date:	2021.01.05 08:46:26
Drawn by:	crd
Checked by:	pp
Approved by:	
Conceptual	

Sheet Title  
THIRD FLOOR OVERALL  
PLAN

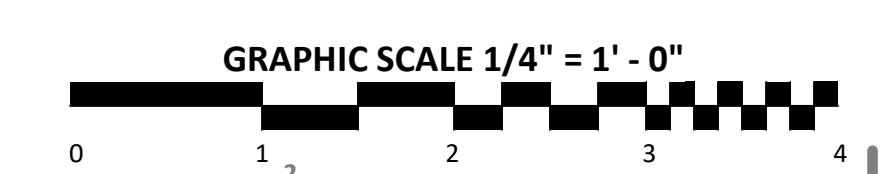
Sheet No.  
**A131**

**GENERAL PLAN NOTES**

- DIMENSIONAL WOOD FRAMING - ALL EXTERIOR DIMENSIONS ARE FROM FACE OF SHEATHING TO FACE OF SHEATHING.
- DIMENSIONAL WOOD FRAMING - OPENINGS ARE DIMENSIONED TO CENTER OF ROUGH OPENINGS - VERIFY RO'S PRIOR TO FRAMING.
- DIMENSIONAL WOOD FRAMING - FLOORS HEIGHTS ARE DIMENSIONED TO ROUGH FLOOR ELEVATION (TOP OF FLOOR SHEATHING).
- DIMENSIONAL WOOD FRAMING DEMISING (PARTY) WALLS ON THIS PLAN ARE DIMENSIONED TO CENTERLINE OF WALL U.N.O.
- STRUCTURAL MASONRY CONSTRUCTION - ALL EXTERIOR DIMENSIONS ARE FROM FACE OF MASONRY TO FACE OF MASONRY.
- STRUCTURAL MASONRY CONSTRUCTION - OPENINGS ARE DIMENSIONED AS MASONRY OPENINGS (MO'S) - VERIFY RO'S PRIOR TO MASONRY CONSTRUCTION.
- SEE STRUCTURAL SHEETS FOR DIMENSIONS OF FOUNDATION WALLS & PRECAST PLANK
- SEE STRUCTURAL SHEETS FOR STRUCTURAL ELEMENTS & ADDITIONAL INFORMATION
- SEE ENLARGED SCALE PLANS FOR 1/4" SCALE PLANS FOR UNITS & COMMON AREAS
- DOOR LOCATIONS ARE DOOR WIDTH PLUS 8 INCHES (4 INCHES EACH SIDE) TO ACCOUNT FOR TRIM U.N.O.
- SEE SHEET A601 FOR COMMON AREA DOOR SCHEDULES
- SEE SHEET A602 FOR COMMON AREA ROOM FINISH SCHEDULE



**1 THIRD FLOOR OVERALL PLAN**  
SCALE: 1/4" = 1'-0"



C:\TempCAD\BLDG 4 v.1 r2020 christopher\_dean.rvt

Conceptual



**CROSSWINDS @ HAWK'S LANDING**  
BUILDINGS 4 & 5 - 16 CONDOMINIUM UNITS EACH BLDG  
9237 - 9249 CROSSWINDS LANES  
MADISON, WISCONSIN 53593

Issue Dates:

DATE	DESCRIPTION
2021.01.06	ALTERATION TO PD

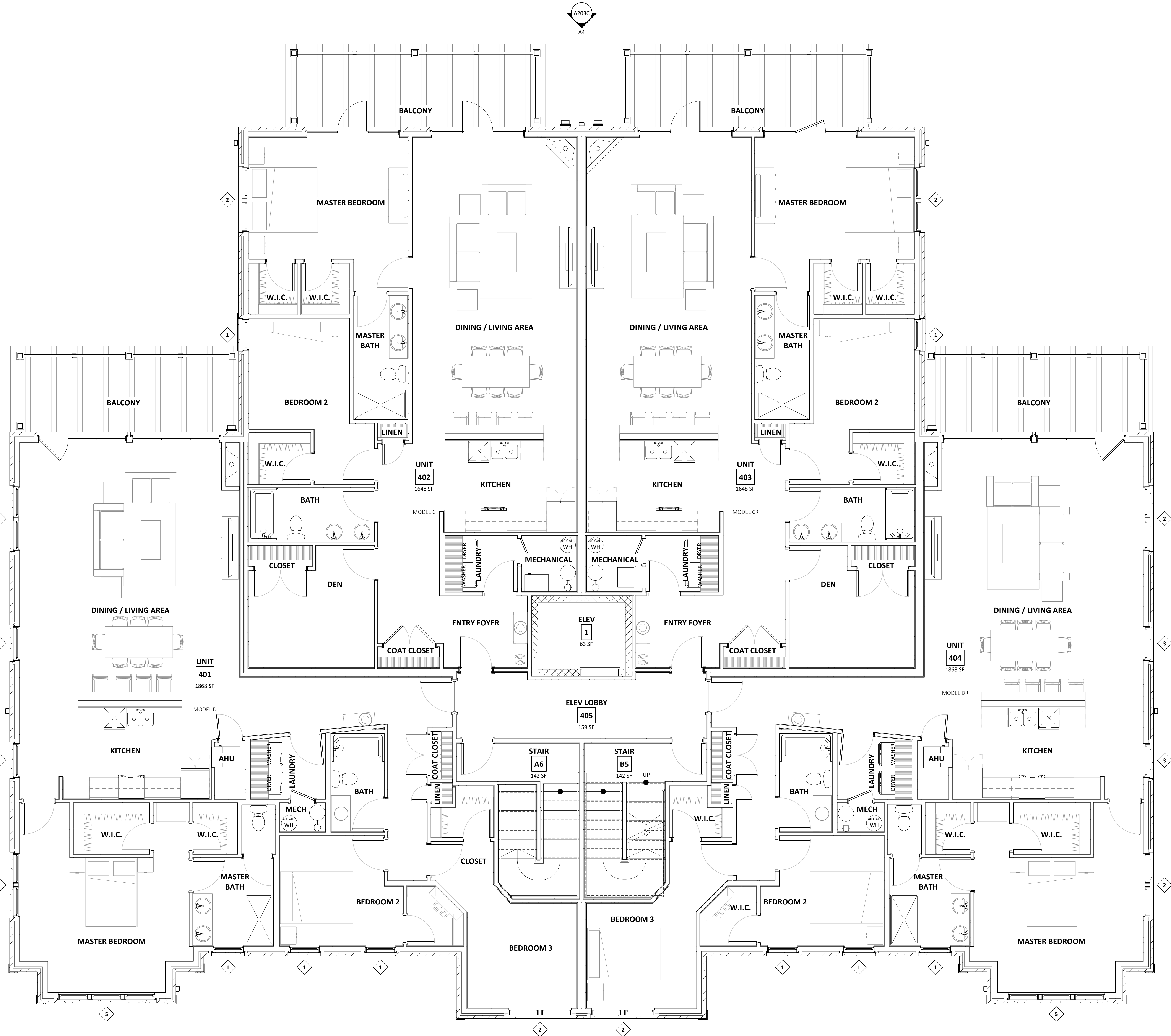
Project No.	Project Number
Plot Date:	2021.01.05 08:46:29
Drawn by:	crd
Checked by:	pp
Approved by:	
Conceptual	

Sheet Title  
FOURTH FLOOR OVERALL  
PLAN

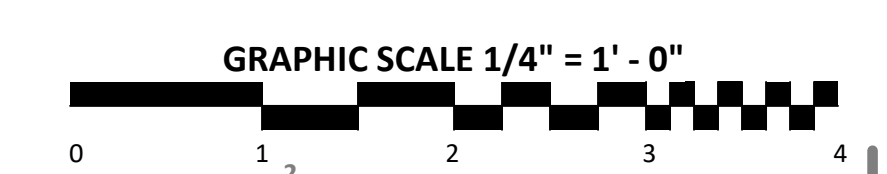
Sheet No.  
**A141**

**GENERAL PLAN NOTES**

- DIMENSIONAL WOOD FRAMING - ALL EXTERIOR DIMENSIONS ARE FROM FACE OF SHEATHING TO FACE OF SHEATHING.
- DIMENSIONAL WOOD FRAMING - OPENINGS ARE DIMENSIONED TO CENTER OF ROUGH OPENINGS - VERIFY RO'S PRIOR TO FRAMING.
- DIMENSIONAL WOOD FRAMING - FLOORS HEIGHTS ARE DIMENSIONED TO ROUGH FLOOR ELEVATION (TOP OF FLOOR SHEATHING).
- DIMENSIONAL WOOD FRAMING DEMISING (PARTY) WALLS ON THIS PLAN ARE DIMENSIONED TO CENTERLINE OF WALL U.N.O.
- STRUCTURAL MASONRY CONSTRUCTION - ALL EXTERIOR DIMENSIONS ARE FROM FACE OF MASONRY TO FACE OF MASONRY.
- STRUCTURAL MASONRY CONSTRUCTION - OPENINGS ARE DIMENSIONED AS MASONRY OPENINGS (MO'S) - VERIFY RO'S PRIOR TO MASONRY CONSTRUCTION.
- SEE STRUCTURAL SHEETS FOR DIMENSIONS OF FOUNDATION WALLS & PRECAST PLANK
- SEE STRUCTURAL SHEETS FOR STRUCTURAL ELEMENTS & ADDITIONAL INFORMATION
- SEE ENLARGED SCALE PLANS FOR 1/4" SCALE PLANS FOR UNITS & COMMON AREAS
- DOOR LOCATIONS ARE DOOR WIDTH PLUS 8 INCHES (4 INCHES EACH SIDE) TO ACCOUNT FOR TRIM U.N.O.
- SEE SHEET A601 FOR COMMON ARE DOOR SCHEDULES
- SEE SHEET A602 FOR COMMON AREA ROOM FINISH SCHEDULE



**1 FOURTH FLOOR OVERALL PLAN**  
SCALE: 1/4" = 1'-0"



C:\TempCAD\BLDG 4 v.1 r2020 christopher\_dean.rvt

Conceptual



**CROSSWINDS @ HAWK'S LANDING**  
BUILDINGS 4 & 5 - 16 CONDOMINIUM UNITS EACH BLDG  
9237 - 9249 CROSSWINDS LANES  
MADISON, WISCONSIN 53593

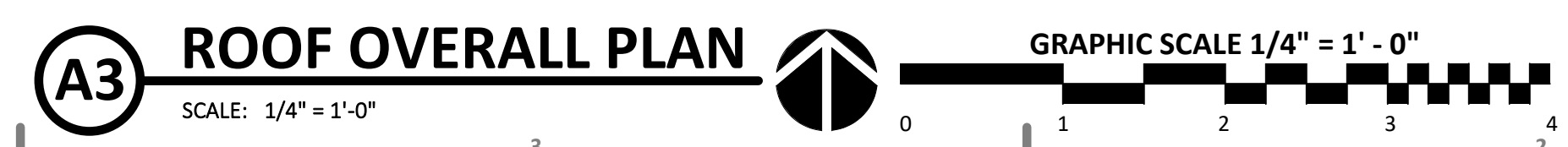
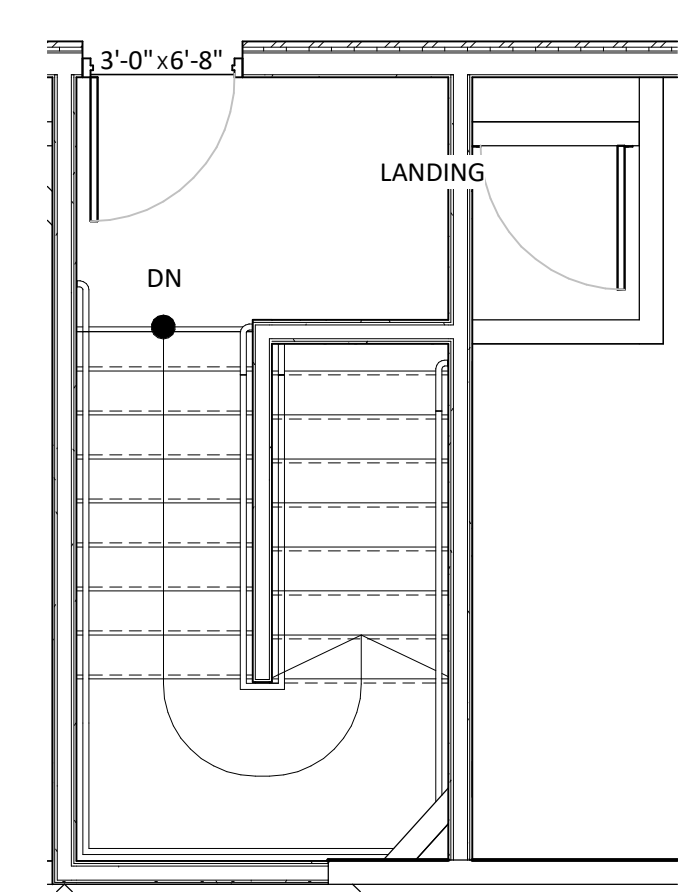
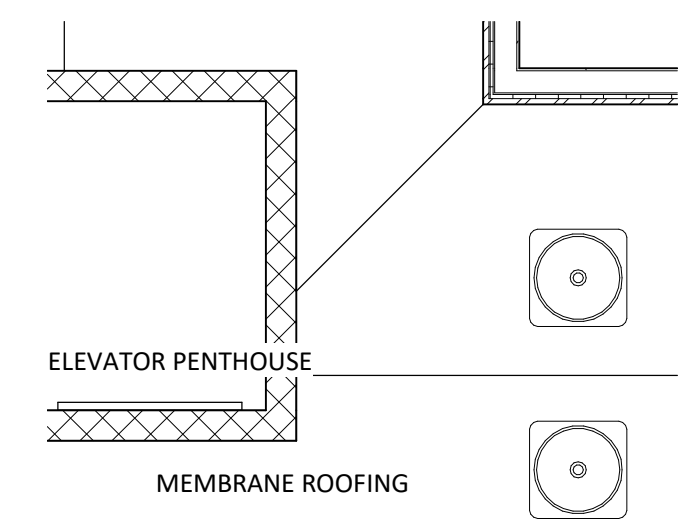
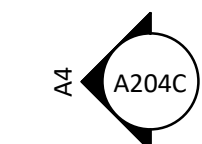
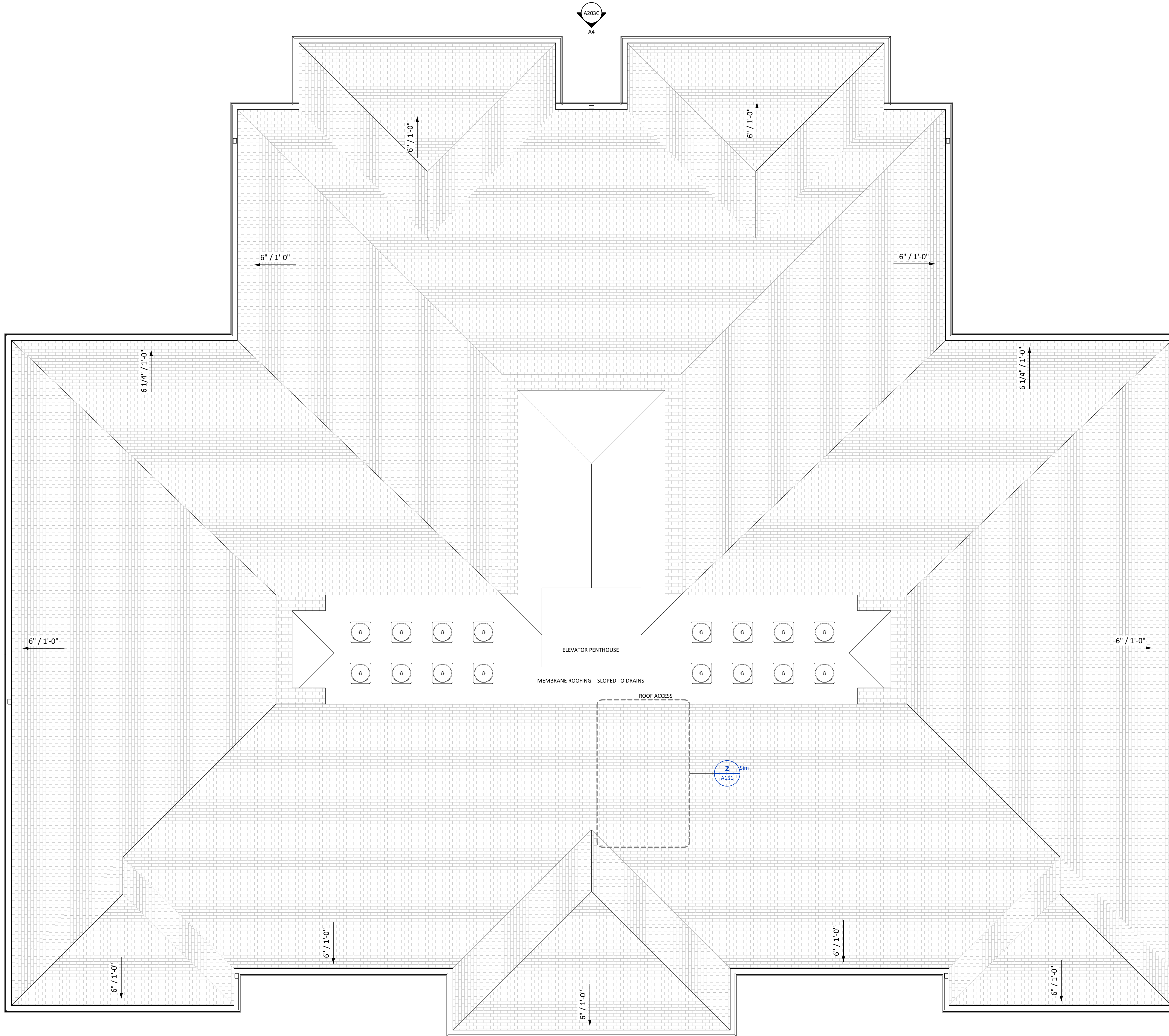
Issue Dates:

DATE	DESCRIPTION
2021.01.06	ALTERATION TO PD

Project No.	Project Number
Plot Date:	2021.01.05 08:46:32
Drawn by:	crd
Checked by:	pp
Approved by:	

Conceptual  
Sheet Title  
ROOF OVERALL PLAN

Sheet No.  
**A151**





**CROSSWINDS @ HAWK'S LANDING**  
BUILDINGS 4 & 5 - 16 CONDOMINIUM UNITS EACH BLDG  
9237 - 9249 CROSSWINDS LANES  
MADISON, WISCONSIN 53593

Issue Dates:

DATE	DESCRIPTION
2021.01.06	ALTERATION TO PD

Project No.	Project Number
Plot Date:	2021.01.05 08:47:13
Drawn by:	crd
Checked by:	pp
Approved by:	
Conceptual	

Sheet Title  
COLOR EXTERIOR  
ELEVATIONS

Sheet No.  
**A201C**

Conceptual



**A4** COLORIZED SOUTH ELEVATION  
SCALE: 1/4" = 1'-0"





**CROSSWINDS @ HAWK'S LANDING**  
BUILDINGS 4 & 5 - 16 CONDOMINIUM UNITS EACH BLDG  
9237 - 9249 CROSSWINDS LANES  
MADISON, WISCONSIN 53593

Issue Dates:

DATE	DESCRIPTION
2021.01.06	ALTERATION TO PD

Project No.	Project Number
Plot Date:	2021.01.05 08:47:57
Drawn by:	crd
Checked by:	pp
Approved by:	
Conceptual	

Sheet Title  
COLOR EXTERIOR  
ELEVATIONS

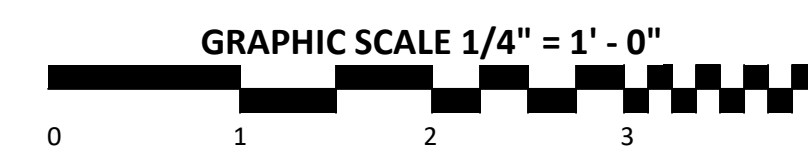
Sheet No.  
**A202C**

Conceptual

C:\Temp\CAD\BLDG 4 v.1 12020 christopher\_dean.rvt



**A4** COLORIZED WEST ELEVATION  
SCALE: 1/4" = 1'-0"





**CROSSWINDS @ HAWK'S LANDING**  
BUILDINGS 4 & 5 - 16 CONDOMINIUM UNITS EACH BLDG  
9237 - 9249 CROSSWINDS LANES  
MADISON, WISCONSIN 53593

Issue Dates:

DATE	DESCRIPTION
2021.01.06	ALTERATION TO PD

Project No.	Project Number
Plot Date:	2021.01.05 08:48:47
Drawn by:	crd
Checked by:	pp
Approved by:	
Conceptual	

Sheet Title  
COLOR EXTERIOR  
ELEVATIONS

Sheet No.  
**A203C**

Conceptual



**A4** COLORIZED NORTH ELEVATION  
SCALE: 1/4" = 1'-0"





**CROSSWINDS @ HAWK'S LANDING**  
BUILDINGS 4 & 5 - 16 CONDOMINIUM UNITS EACH BLDG  
9237 - 9249 CROSSWINDS LANES  
MADISON, WISCONSIN 53593

Issue Dates:

DATE	DESCRIPTION
2021.01.06	ALTERATION TO PD

Project No.	Project Number
Plot Date:	2021.01.05 08:49:24
Drawn by:	crd
Checked by:	pp
Approved by:	
Conceptual	

Sheet Title  
COLOR EXTERIOR  
ELEVATIONS

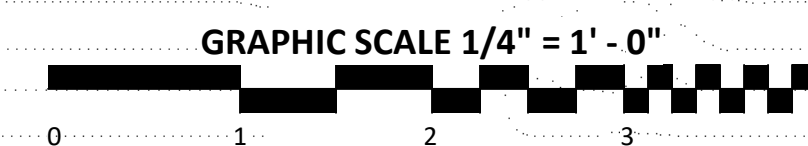
Sheet No.  
**A204C**

Conceptual

C:\Temp\CAD\BLDG 4 v.1 2020 christopher\_dean.rvt



**A4** COLORIZED EAST ELEVATION  
SCALE: 1/4" = 1'-0"







Your Outdoor Superstore

1-800-323-5664

M-F 8:00am - 4:30pm CT

Home | Free Catalog | About Us | Contact Us | FAQs | Site Map

BOL-2-SF-P

## Classic Bollard Bike Rack



Model BOL-2-SF-P | Forest Green



Grout Cover  
(Two Piece)

### Optional Grout Covers

The 2 piece Grout Cover is the ideal aesthetic solution to conceal in-ground mount insertion point. Galvanized and Electro Polished Stainless Steel racks are paired with Spun Aluminum covers. Powder-Coated finish racks are paired with color matched Powder-Coated Cast Aluminum covers.

Two piece grout covers can be ordered from the Optional Accessories chart shown at the bottom. This grout cover will fit on both in-ground and surface mounts and can also be placed on existing installations.

### Multi-Purpose Bollard Bike Rack

The Classic bollard bike rack is the ideal dual-purpose bike rack. It can be used to limit access to bike-only trails and parking areas while also providing riders with secure parking in both urban and rural environments. They can even be used as security and/or traffic barriers to help protect pedestrian walkways.

This 2-3/8" O.D. tubing bike rack is available in galvanized, powder-coated, and electro polished stainless steel. Choose in-ground or surface mount with base plate. The bollard bike rack features round 3/4" rod arms that can secure up to 2 bikes, and is easy to use regardless of the type of bike being parked. Drop In Anchors available for concrete installation.



Model BOLCL-2-SF-P | Red



In-ground Mount



Surface Mount



Flat Post Cap



Ball Post Cap



**Matching Products**



**Galvanized Finish**

The hot dip galvanizing process results in an effective corrosion resistant surface with multi-varied spangle appearance.

**Electro Polished**

Electro Polished Stainless Steel finish process produces a superior corrosion resistance and appearance which can be achieved by no other method of surface finishing.

▼ **Item Specific Details Available on Linked Model Numbers Below**



Tweet

Classic Bollard Bike Rack   Flat Post Cap						Qty
<a href="#">BOL-2-IG-G</a>	Galvanized		In-ground Mount	(53 lbs)	\$149.00	<input type="text"/>
<a href="#">GC-238</a>	<b>Optional Grout Cover - 1 Required Per Bike Rack</b>			(1 lbs)	\$25/ea	<input type="checkbox"/>
<a href="#">BOL-2-SF-G</a>	Galvanized		Surface Mount	(37 lbs)	\$169.00	<input type="text"/>
<a href="#">BOL-2-IG-P</a>	Powder-Coated	<input type="text" value="Choose Color"/>	In-ground Mount	(53 lbs)	\$149.00	<input type="text"/>
<a href="#">GC-238</a>	<b>Optional Grout Cover - 1 Required Per Bike Rack</b>			(1 lbs)	\$25/ea	<input type="checkbox"/>
<a href="#">BOL-2-SF-P</a>	Powder-Coated	<input type="text" value="Black"/>	Surface Mount	(37 lbs)	\$169.00	<input type="text"/>
<a href="#">BOL-2-IG-ES</a>	Electro Polished Stainless Steel		In-ground Mount	(53 lbs)	\$389.00	<input type="text"/>
<a href="#">GC-238</a>	<b>Optional Grout Cover - 1 Required Per Bike Rack</b>			(1 lbs)	\$25/ea	<input type="checkbox"/>
<a href="#">BOL-2-SF-ES</a>	Electro Polished Stainless Steel		Surface Mount	(37 lbs)	\$439.00	<input type="text"/>
Classic Bollard Bike Rack   Ball Post Cap						Qty
<a href="#">BOLCL-2-IG-G</a>	Galvanized		In-ground Mount	(53 lbs)	\$189.00	<input type="text"/>
<a href="#">GC-238</a>	<b>Optional Grout Cover - 1 Required Per Bike Rack</b>			(1 lbs)	\$25/ea	<input type="checkbox"/>
<a href="#">BOLCL-2-SF-G</a>	Galvanized		Surface Mount	(37 lbs)	\$209.00	<input type="text"/>
<a href="#">BOLCL-2-IG-P</a>	Powder-Coated	<input type="text" value="Choose Color"/>	In-ground Mount	(53 lbs)	\$189.00	<input type="text"/>
<a href="#">GC-238</a>	<b>Optional Grout Cover - 1 Required Per Bike Rack</b>			(1 lbs)	\$25/ea	<input type="checkbox"/>
<a href="#">BOLCL-2-SF-P</a>	Powder-Coated	<input type="text" value="Choose Color"/>	Surface Mount	(37 lbs)	\$209.00	<input type="text"/>
Optional Accessories						Qty
<a href="#">GC-238</a>	Two Piece Grout Cover	<input type="text" value="Choose Color"/>		(1 lbs)	\$25.00	<input type="text"/>
<a href="#">DA1220-3-Z</a>	Drop In Anchor - 3 Pack		Zinc Plated	(1 lbs)	\$22.79	<input type="text"/>
<a href="#">DA1220-4-Z</a>	Drop In Anchor - 4 Pack		Zinc Plated	(1 lbs)	\$29.09	<input type="text"/>



<a href="#">DA1220-6-Z</a>	Drop In Anchor - 6 Pack	Zinc Plated	(1 lbs)	\$42.49	<input type="checkbox"/>
<a href="#">DA1220-25-Z</a>	Drop In Anchor - 25 Pack	Zinc Plated	(1 lbs)	\$165.29	<input type="checkbox"/>
<a href="#">DA1220-3-S</a>	Drop In Anchor - 3 Pack	Stainless Steel	(1 lbs)	\$29.09	<input type="checkbox"/>
<a href="#">DA1220-4-S</a>	Drop In Anchor - 4 Pack	Stainless Steel	(1 lbs)	\$37.09	<input type="checkbox"/>
<a href="#">DA1220-6-S</a>	Drop In Anchor - 6 Pack	Stainless Steel	(1 lbs)	\$54.19	<input type="checkbox"/>
<a href="#">DA1220-25-S</a>	Drop In Anchor - 25 Pack	Stainless Steel	(1 lbs)	\$213.69	<input type="checkbox"/>

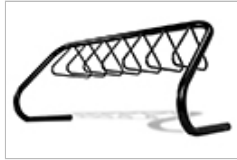
(Prices F.O.B. Origin)

[Bulk Inquiry](#)

### Related Products



Classic Bike Rack Bollards



Triangle Hinge Bike Rack



90 Degree Rotating T Bollard



Highwheeler™ Bike Rack

Copyright and Disclaimer © 1993-2019, Belson Outdoors, LLC



[Home](#) | [Free Catalog](#) | [About Us](#) | [Contact Us](#) | [FAQs](#) | [Privacy Policy](#) | [Site Map](#) | [Shopping Cart](#)

627 Amersale Drive | Naperville, IL 60563 | (800) 323-5664 | Fax: (630) 897-0573 | [sales@belson.com](mailto:sales@belson.com)





Your Outdoor Superstore

1-800-323-5664

M-F 8:00am - 4:30pm CT

Home | [Free Catalog](#) | [About Us](#) | [Contact Us](#) | [FAQs](#) | [Site Map](#)

## Vertical Wall Mount | Bicycle Storage Rack



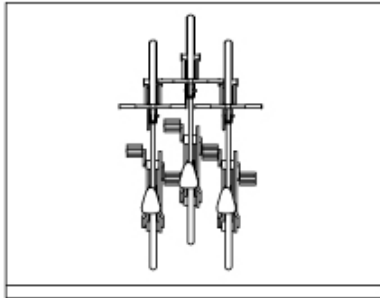
### Indoor Bicycle Storage and Theft Protection Rack

Vertical bicycle storage racks provide space saving bicycle storage. The bicycle racks feature an extended loop that acts as a convenient point to easily secure both the bicycle wheel and frame with a single U-Lock. Designed for simple and easy installation, it is well suited to be mounted in the garage, basement, storage area or anywhere bicycle storage is needed. Available in both wall mount and freestanding models (wall mount racks pictured below). Freestanding models have four wall mount bicycle racks secured to a freestanding rack.



**Model BSV-1-WM-P | Forest Green**  
(Wall Mount)

The vertical bicycle rack is 28" deep, 3-1/4" Wide, and 28" High. The rack is constructed of 1/2" O.D. solid steel rod and 5/8" x 2 1/2" steel channel. Available finishes include a galvanized finish or powder-coated color options displayed below.



The vertical *wall mount* bicycle rack is a popular choice for apartment/residential usage as multiple racks can be mounted in an alternating staggered pattern for maximum bicycle storage. The vertical *freestanding* racks hold 4 bicycles each and can be placed in rows for more bicycle storage space when a mounting wall is not available.

#### Galvanized Finish

The hot dip galvanizing process results in an effective corrosion resistant surface with multi-varied spangle appearance.

#### Matching Products



**Skateboard Rack**  
Wall Mount



**Steel Bike Lockers**

#### Powder-Coated Color Options



▼ [Item Specific Details Available on Linked Model Numbers Below](#)



Tweet

Vertical Wall Mount Bicycle Storage Rack | 1 Bicycle

Qty

<a href="#">BSV-1-WM-G</a>	Wall Mount	Galvanized	(17 lbs)	\$89.00	<input type="text"/>
<a href="#">BSV-1-WM-P</a>	Wall Mount	Powder-Coated	<input type="text" value="Black"/>	(17 lbs)	\$89.00



Vertical Freestanding Bicycle Storage Rack | 4 Bicycles

Qty

BSV-4-FS-G	Freestanding	Galvanized		(128 lbs)	\$629.00	<input type="text"/>
BSV-4-FS-P	Freestanding	Powder-Coated	Choose Color ▼	(128 lbs)	\$629.00	<input type="text"/>

(Prices F.O.B. Origin)

[Bulk Inquiry](#)

Related Products



RackiT™  
Bike Rack



Horizontal Indoor  
Bicycle Storage Racks



DOGIPOT®  
Indoor Aluminum  
Waste Bag Dispenser



Soil Guard™  
Entrance Mats  
(Outdoor)

[Copyright and Disclaimer](#) © 1993-2019, Belson Outdoors, LLC



[Home](#) | [Free Catalog](#) | [About Us](#) | [Contact Us](#) | [FAQs](#) | [Privacy Policy](#) | [Site Map](#) | [Shopping Cart](#)  
627 Amersale Drive | Naperville, IL 60563 | (800) 323-5664 | Fax: (630) 897-0573 | [sales@belson.com](mailto:sales@belson.com)