



**MADISON
PARKS**

Planning and Development Report
BPC
December 2023

CITY OF
MADISON WISCONSIN

Date: Dec 13, 2023
Presented by: Ann Freiwald

Penn Park

Current (November 30, 2023)

Before (2015 Photo)



CITY OF
MADISON WISCONSIN

2

Wolf Paving & Excavating has been busy this fall constructing new courts at Penn Park. The previous courts were 54 years old and at the end of their lifespan. The new court complex consists of two full sized basketball courts and a Mini-Pitch/Futsal court. The construction contract was awarded this summer, but construction of the courts was on hold until this fall due to the many exciting events occurring at Penn Park on a regular basis during the summer months. These events include an annual basketball tournament held on these courts in August.

Work is underway to install the Musco lighting system that will be complete yet this year. The lighting will feature a “push to play” system, just like our other lighted courts in the system. Temporary striping has been applied to allow for play during the winter and spring. A colored sport court surface will be applied in the late spring or early summer and permanent striping will be applied afterwards. The sport court surface requires warmer temperatures to install. Finally, bleachers will be placed between the courts at the completion of the project.

Penn Park



The Mini-Pitch/Futsal court at Penn Park is the first of its kind in our park system. Parks was able to secure a \$10,000 grant from Musco Sports Lighting in the form of a product discount on the installed court system. The system includes full fencing and goals, gates, benches, cup holders, and securable storage. The total cost for the project is \$614,208.

Turnstile at Olbrich Gardens (Before and After)



Planning staff worked closely with Olbrich Garden staff to replace the old turnstile. The project timing was carefully considered to not impact events, such as GLEAM. The turnstile itself was small and very old, and the pavement it sat on was in horrible condition. Thanks to coordinated efforts and funding received from a Wisconsin Department of Tourism grant (American Rescue Plan Act funds) awarded to the Olbrich Botanical Society the turnstile has been replaced with a new turnstile more than double the size of the old one. The new turnstile is the largest available on the market. This improvement will allow visitors to more comfortably use the after-hours exit along with strollers, wagons, and other mobility assistance devices.

Senior Center - before renovation



The renovation of the Madison Senior Center courtyard is scheduled for completion in January. Madison Parks worked with Saiki Design in redesigning the space based on an extensive community engagement process. Parks held five public meetings to gather user input and refine the design. Improvements to the courtyard include new paving, seating, lighting, and landscaping. Drax Inc. began construction in June, and the \$1M renovation project will add a new public green space to the Parks system, serving downtown area residents and park visitors.

notes here.

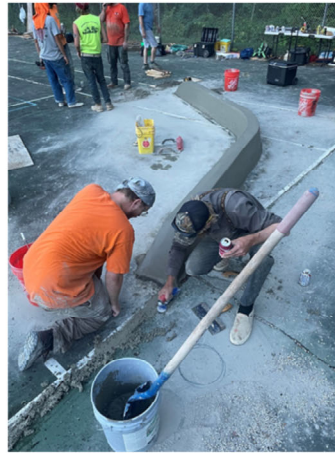
Senior Center



Senior Center



Elvehjem All Wheel Spot



CITY OF
MADISON WISCONSIN

8

The volunteer group has been busy at Elvehjem over the summer and fall. They have taken an old tennis courts whose pavement was beyond repair and built a new all wheel spot on top of it.

Volunteers gathered \$13,000 that went towards this first phase of the project. With all labor provided by volunteers, the only cost associated with building the All-Wheel Park is in construction materials. Most of the money was spent on concrete, rebar and wood for creating forms.

The all-volunteer labor pool consists of a few leaders from our group that either have, or currently work professionally in the skatepark construction industry. These folks handle all the planning and logistics that come with building skateparks.

Elvehjem All Wheel Spot



In addition, they have a "core" group of volunteers from the Madison Skatepark Fund that regularly show up for the workdays. While these folks don't build ramps for their day job, many of them probably could as they have become pretty experienced in the techniques for laying and finishing concrete.

And finally, the group has developed a list of about 20 folks from the Elvehjem Neighborhood who have reached out based on the social media and other outreach. They notify this list any time they need some more hands, especially when a concrete truck drops a load off.

The Madison Skatepark Fund reports positive feedback from the neighborhood thus far.

The process of building DIY parks is something that happens very organically, so there isn't really a "plan" or "schedule" in place. A DIY park is never officially "done" but rather constantly evolving through little tweaks. That being said, we are loosely calling the work we completed in 2023 "Phase One" and hope to finish the rest of the park in 2024.

Highlights for 2024

- Reconstructed parking lots at Burrows and Warner Park (next to dog park)
- POSP update process on-going throughout the year
- Reconstructed tennis courts and lights at Rennebohm, and a remodeled shelter
- Door Creek Shelter to open (late in the year)
- New recreational biking features at Sycamore Park
- New playgrounds at Kestral, Garner, Richmond Hills, Manchester and other parks
- New Shelter with restrooms at Country Grove Park

Just a list of a few projects to look for in 2024.