

West Interceptor Rehabilitation Project

Project History

The West Interceptor was installed in 1916 from Pump Station 2 to the intersection of University Ave. and Farley Ave. The project section of the West Interceptor includes 4,575 feet of 24" cast iron pipe. No improvements or capacity upgrades in project section to date.

Reasons for Rehabilitation

Capacity

- Pipe in present condition is not able to convey estimated future peak flows

Condition

- Interior mineral deposits (tuberculation) reduce flow.
- Lining will provide smoother pipe wall to increase flow and prevent future tuberculation



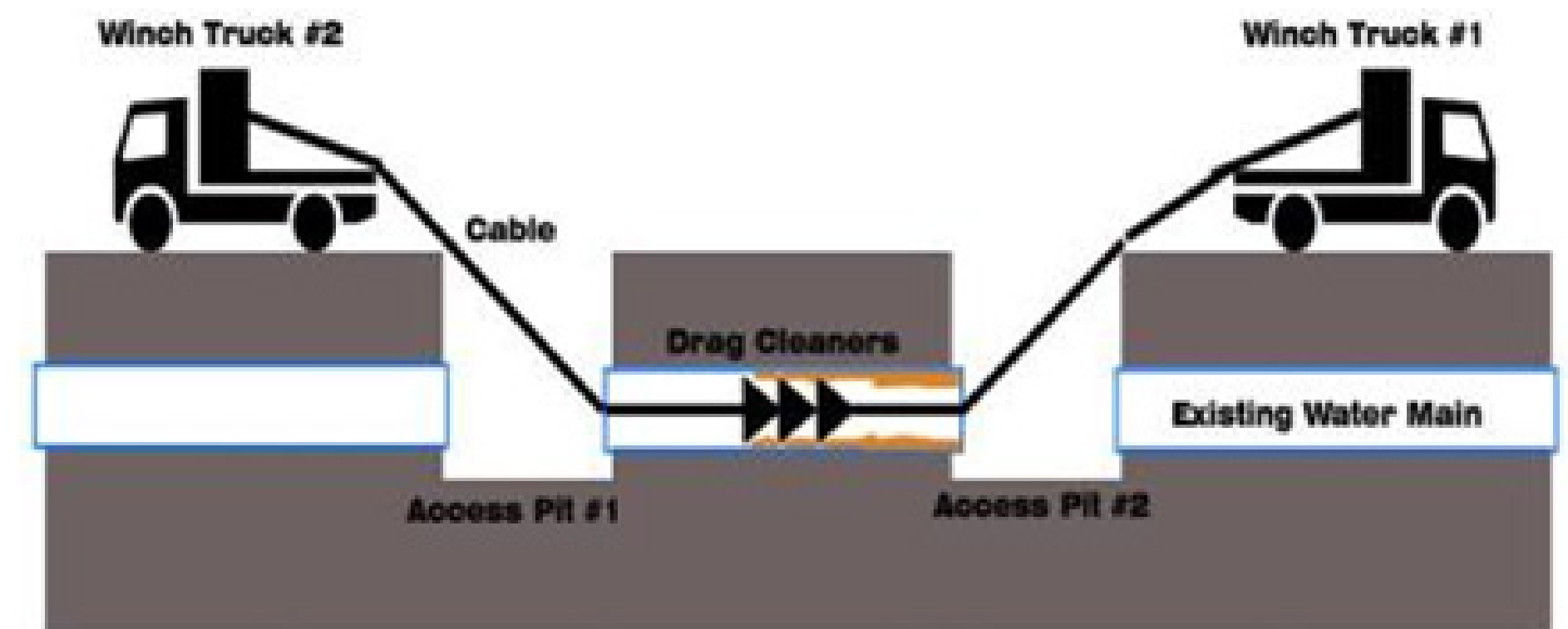
tuberculation (mineral desposits) inside the interceptor



West Interceptor Rehabilitation Project

Rehabilitation

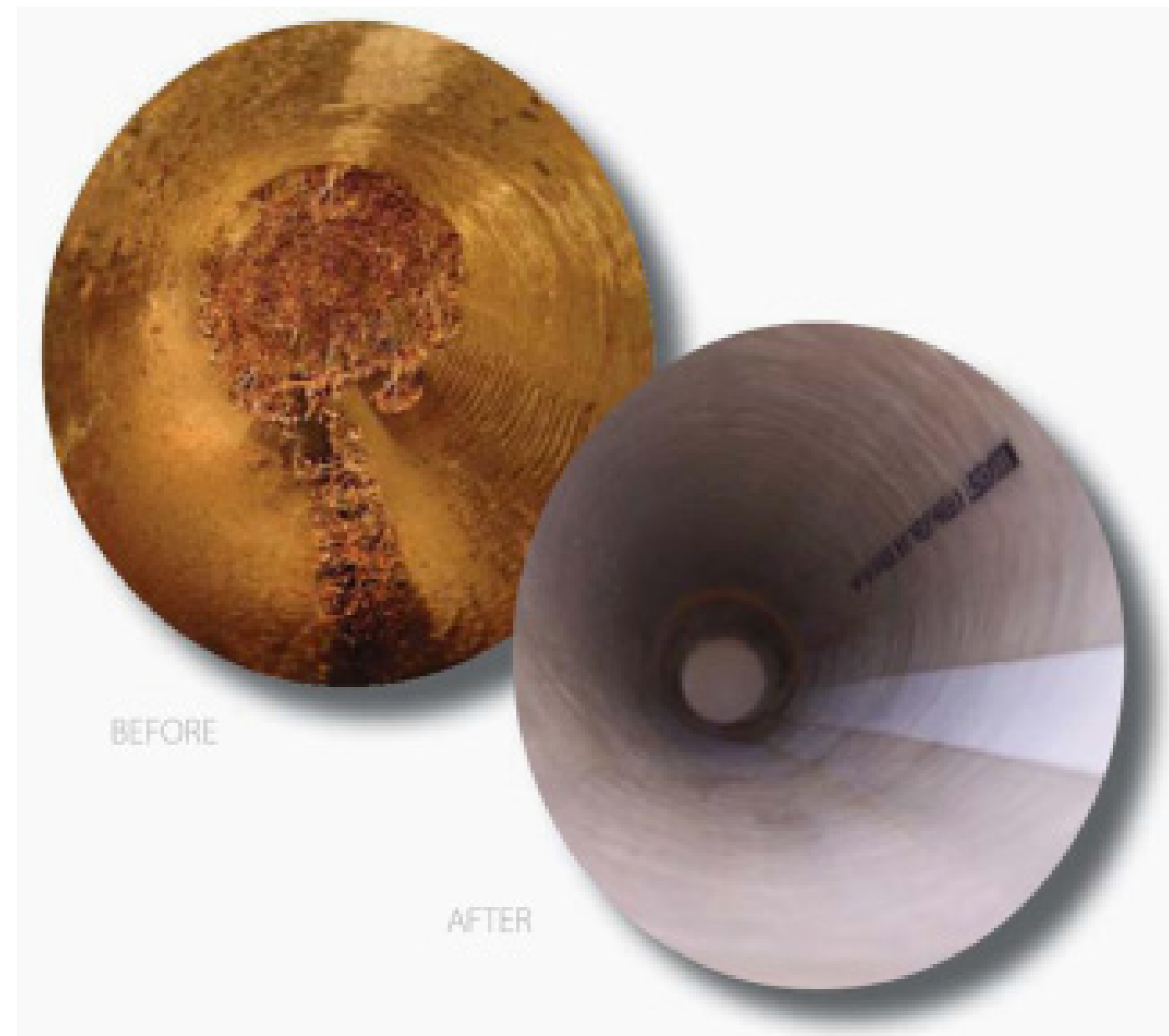
A special drag-scraping process will be used to clear tuberculation.



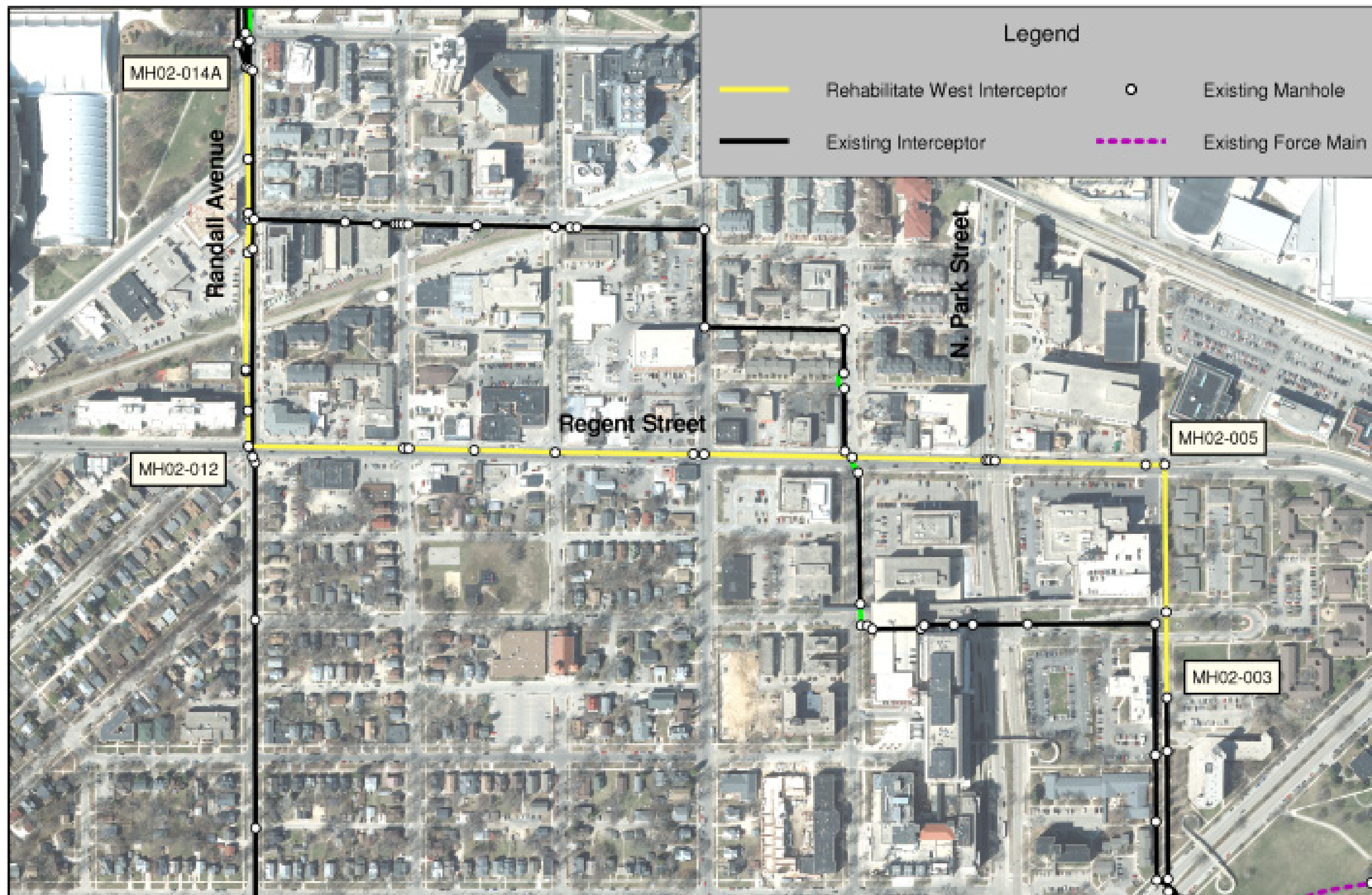
West Interceptor Rehabilitation Project

Rehabilitation

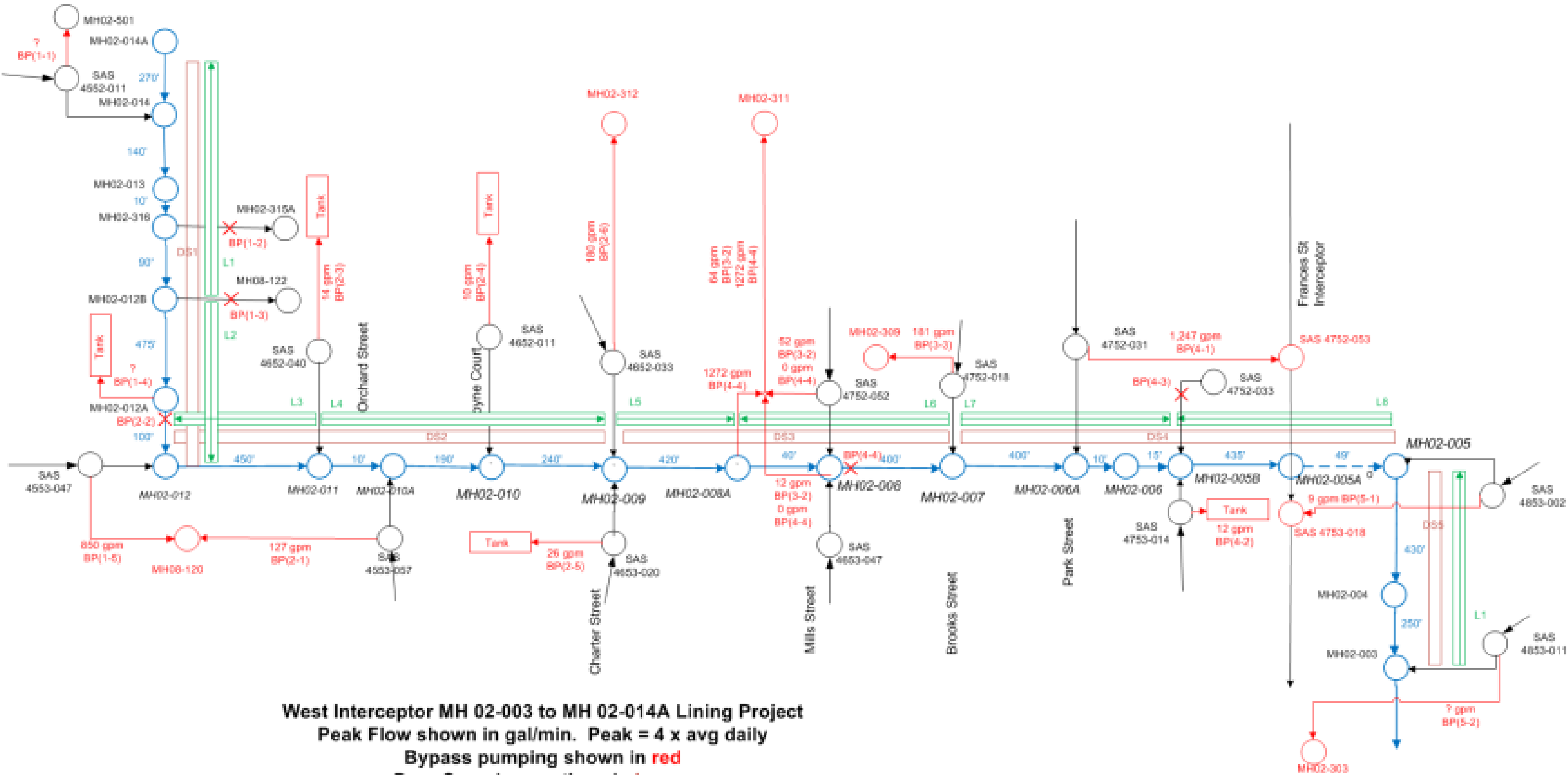
Cured-in-place lining will be applied to 4,575 feet of interceptor lines



Project Overview



Project Schematic



West Interceptor MH 02-003 to MH 02-014A Lining Project
 Peak Flow shown in gal/min. Peak = 4 x avg daily
 Bypass pumping shown in red
 Drag Scraping sections in brown
 Lining sections in green
 Interceptor pipe in blue