

3202 Dairy Drive Campground Site

October 18, 2021 Plan Commission



Why 3202 Dairy Drive for a campground site?

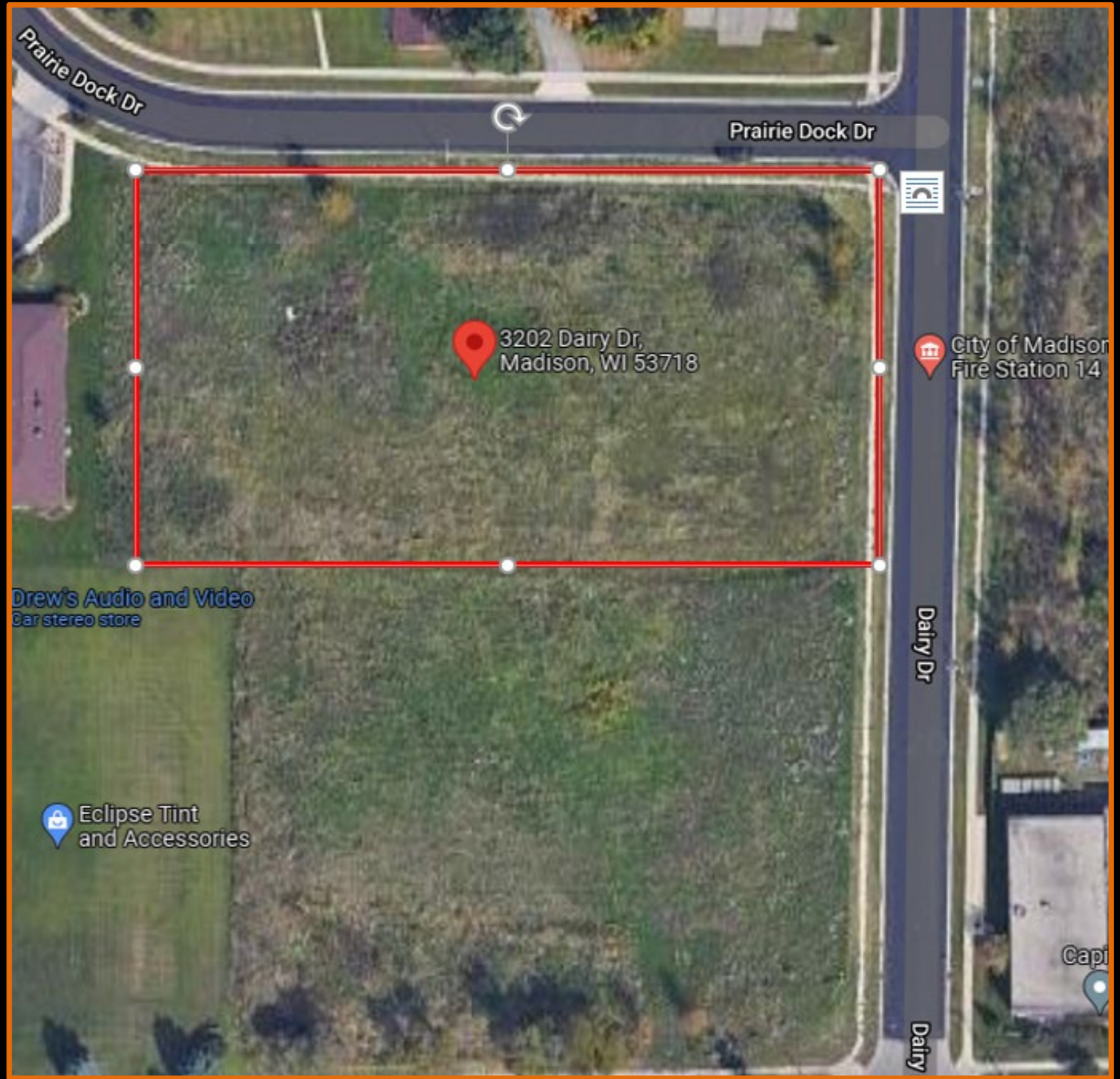
- The Dairy Drive site will provide an alternative to the encampment at Reindahl Park
- The site meets staff criteria for a semi-permanent campground site:
 - City-owned / non-park space
 - Site is large enough to support 25-30 users
 - Access to transit and food outlet
 - Site is served by public water/sewer



3202 Dairy Drive – Campground Site Specifications

- Physical dimensions fixed – site enclosed with six-foot privacy fence
- 30 housing climate controlled shelters with electrical service
- Shelters will be limited to one occupant; couples may have two shelters
- On-site common bathroom and shower facilities
- On-site garbage/recycling collection
- In compliance with state campground regulations
- Actively managed by paid, on-site staff under contract with City
- Auto parking will occur on nearby streets; bike parking provided on-site





Prairie Dock Dr

Prairie Dock Dr

3202 Dairy Dr,
Madison, WI 53718

City of Madison
Fire Station 14

Drew's Audio and Video
Car stereo store

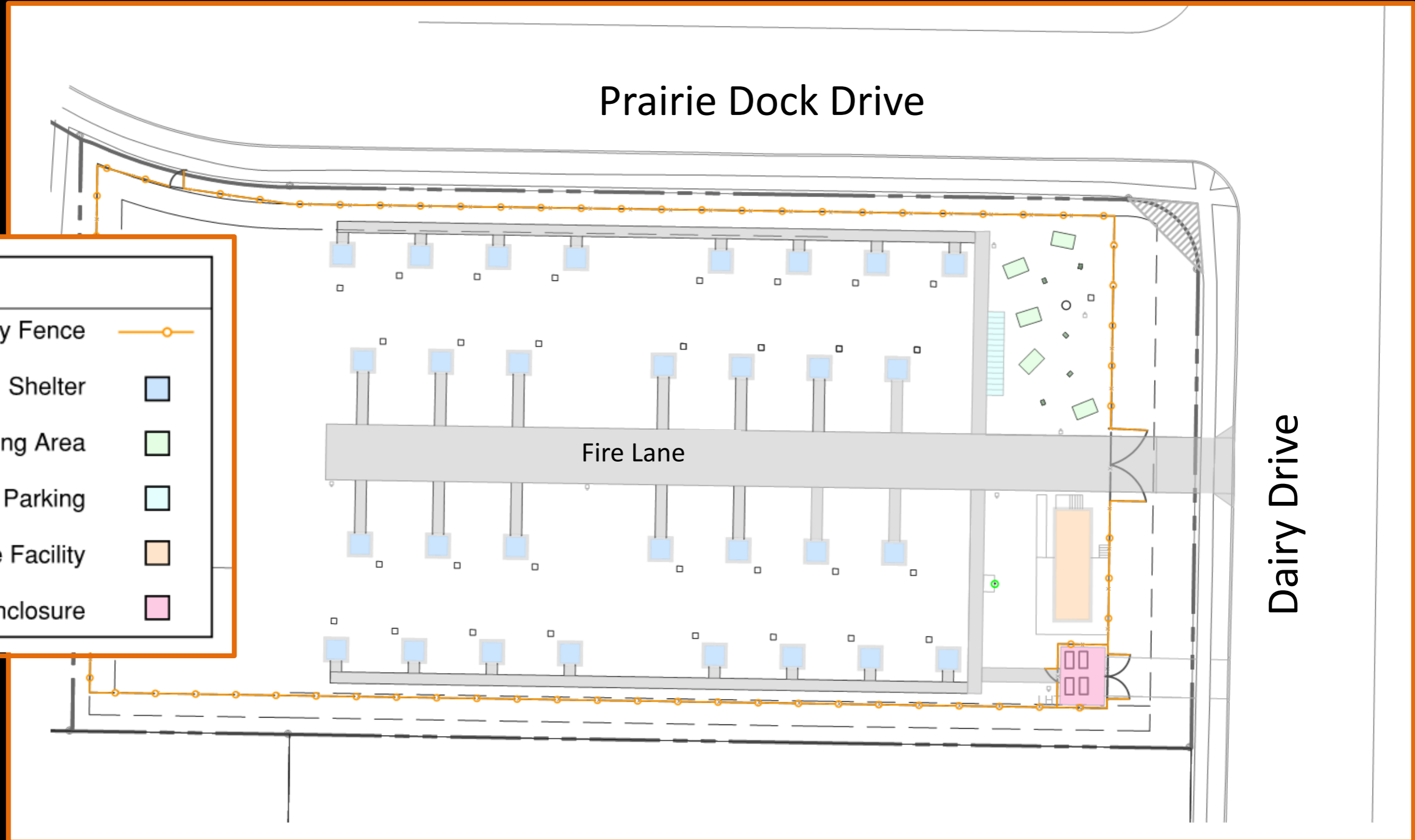
Eclipse Tint
and Accessories

Dairy Dr

Dairy

Cap

3202 Dairy Drive – Campground Site Plan



3202 Dairy Drive – Individual Shelters



- 64 sq. ft. prefabricated (aluminum frame and composite panel) shelter
- Locking doors, operable windows, fold-up beds, electricity, heating & cooling, refrigerators, safety features (e.g. fire extinguisher and smoke detector).
- See palletshelter.com for additional information

3202 Dairy Drive – Restrooms & Office Facility



- 480 square foot building (relocated from Hilldale shopping area)
- Conversion to 6 individual restrooms (toilet, sink, & shower) and office space

Management Partner Will Be Responsible For:

- Resident case management (housing, employment, healthcare, etc.)
- Paid, on-site staffing during daytime and evening hours with 24/7 phone line
- Property maintenance (snow, landscaping, shelter turnover etc.)
- Monitoring activities on and around site for safety
- Transportation coordination
- Maintain good relationships with surrounding businesses
- Coordination of donations

