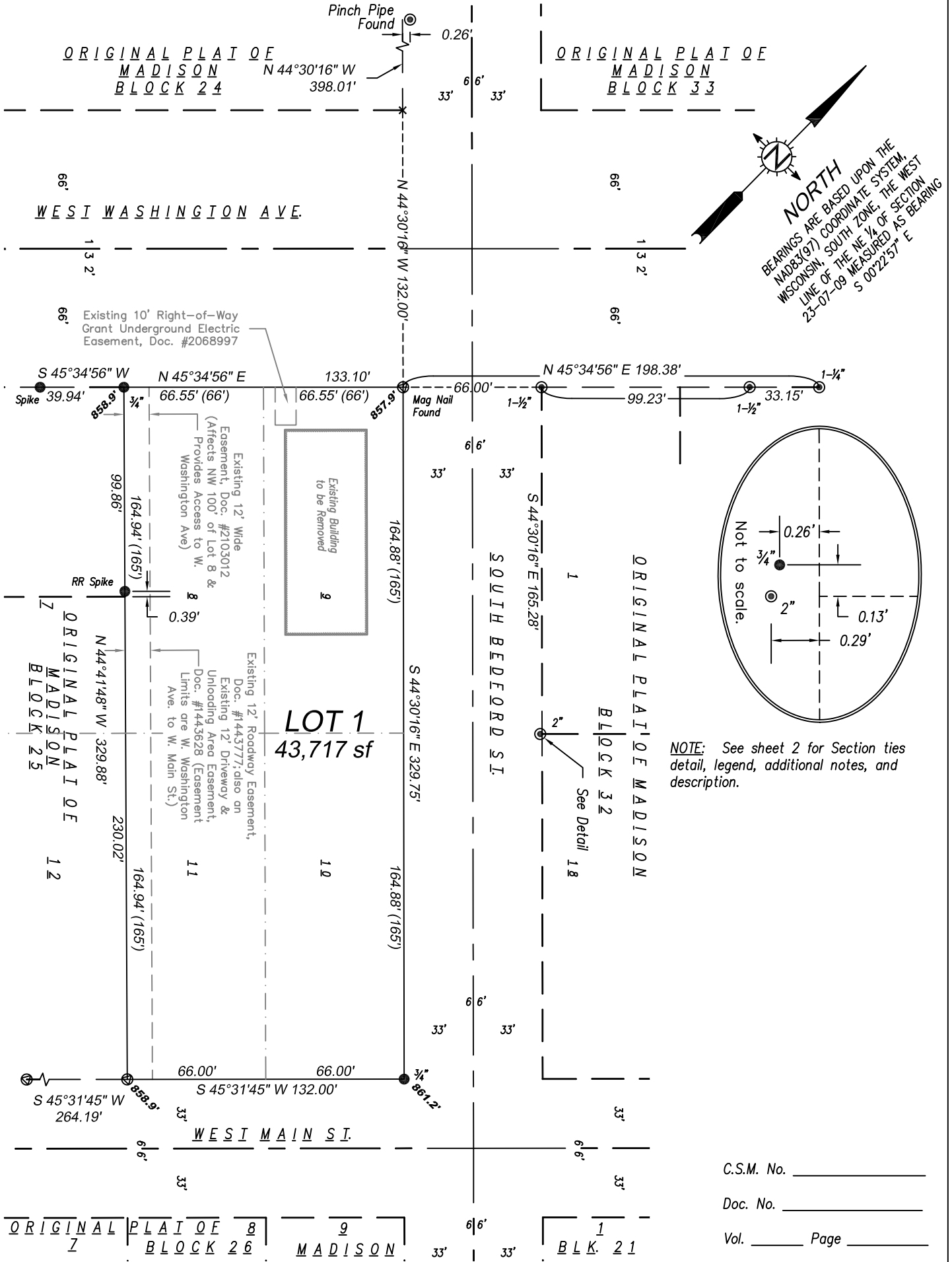
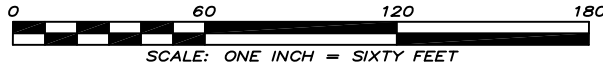
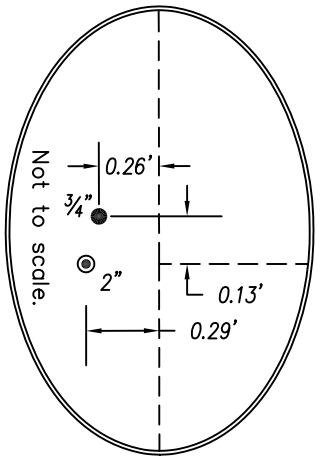


CERTIFIED SURVEY MAP No.

ALL OF LOTS 8, 9, 10, & 11, BLOCK 25, ORIGINAL PLAT OF MADISON, ALSO LOCATED IN THE SW 1/4 OF THE NE 1/4 OF SECTION 23, TOWNSHIP 07 NORTH, RANGE 09 EAST, CITY OF MADISON, DANE COUNTY, WISCONSIN



NORTH
 BEARINGS ARE BASED UPON THE
 NAD83(97) COORDINATE SYSTEM,
 WISCONSIN, SOUTH ZONE. THE WEST
 LINE OF THE NE 1/4 OF SECTION
 23-07-09 MEASURED AS BEARING
 S 00°22'57" E




NOTE: See sheet 2 for Section ties detail, legend, additional notes, and description.

C.S.M. No. _____
 Doc. No. _____
 Vol. _____ Page _____

ORIGINAL PLAT OF 8 9 6'6" 1
 BLOCK 26 MADISON 33' 33' B L K. 21

SURVEYED FOR:
 2 South Bedford, LLC
 5501 Femrite Drive
 Madison, WI 53713



IS GROUP
One firm - start to finish™
 ARCHITECTS • ENGINEERS • PLANNERS • LAND SURVEYORS • SCIENTISTS

Madison Office
 2690 Research Park Drive, Suite H
 Madison, WI 53711
 Ph: 608-442-9500
 Fx: 608-442-9501

Faribault, Minnesota: 507-331-1500
 Mankato, Minnesota: 507-387-6651
 Web: www.is-grp.com

FN: 12041
 DATE: 07/27/2009

REVISIONS:

SHEET
1 OF 3