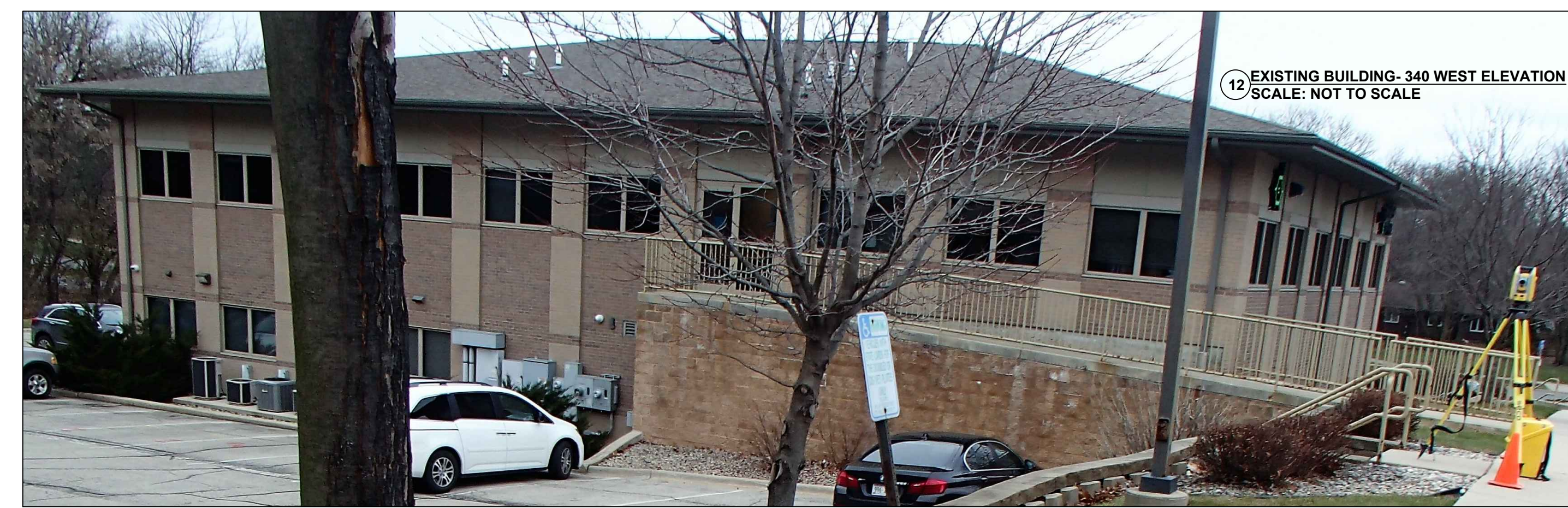
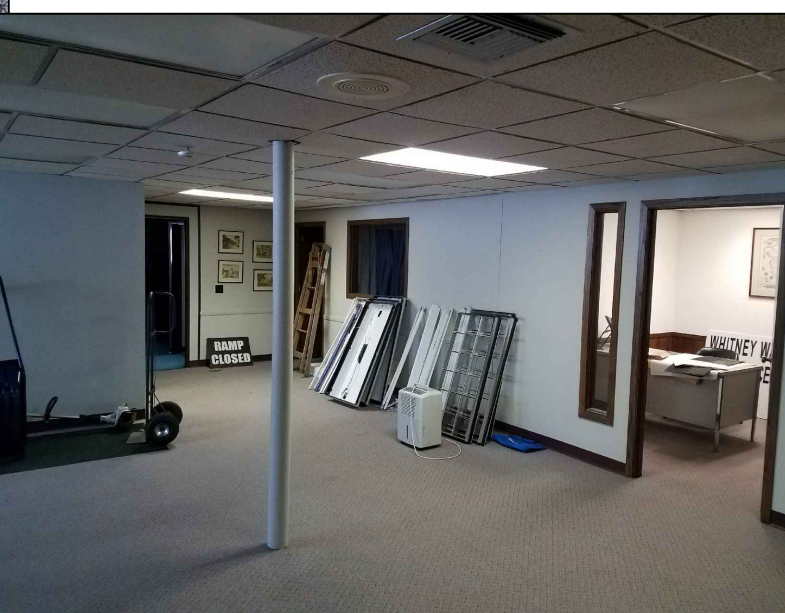
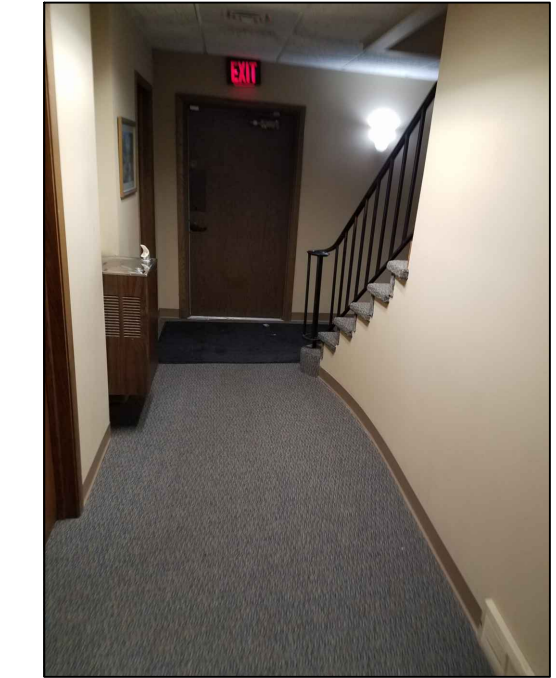
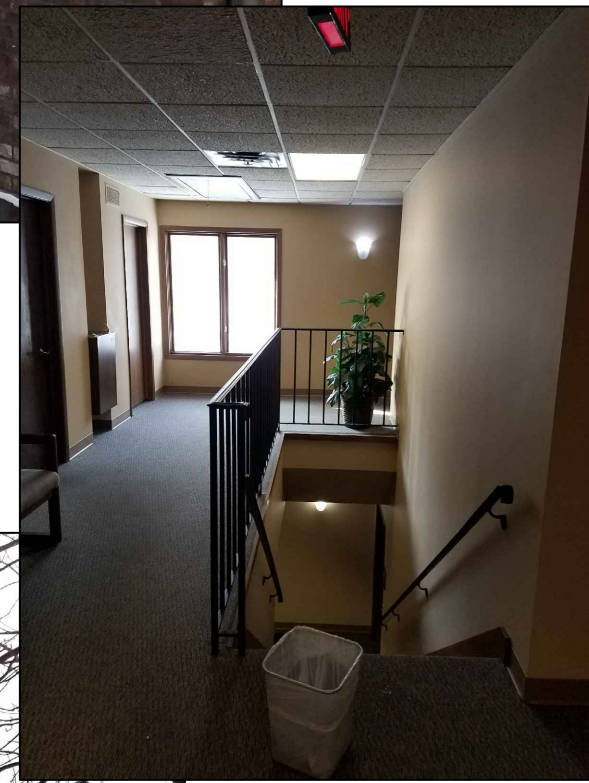
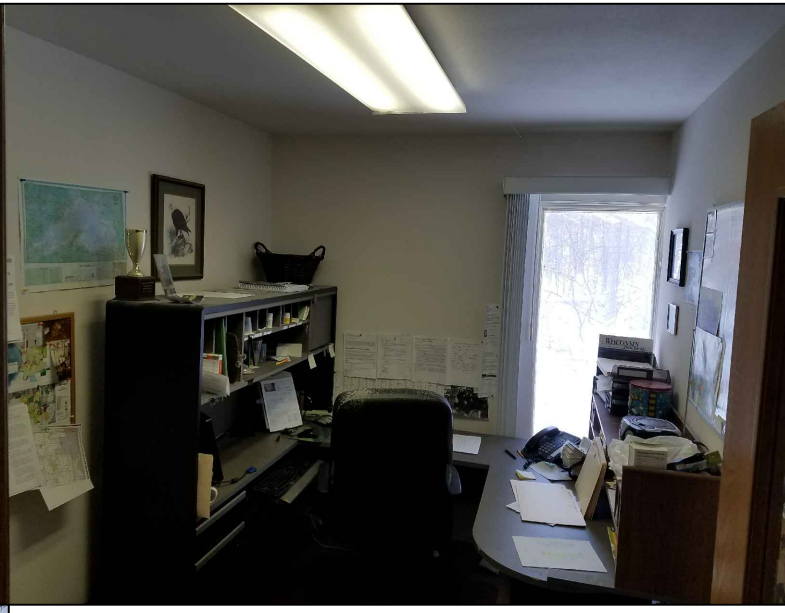


TRI-NORTH BUILDERS HOLDS ALL RIGHTS INCLUDING THE COPYRIGHT OF THIS DOCUMENT, AS WELL AS THE CONCEPTS AND DESIGNS INCORPORATED HEREIN AS AN INSTRUMENT OF SERVICE. ALL PLANS AND ILLUSTRATIONS CONTAINED IN THIS PUBLICATION ARE THE EXCLUSIVE PROPERTY OF TRI-NORTH BUILDERS AND REPRODUCTION IN WHOLE OR IN PART IS STRICTLY PROHIBITED BY LAW. ALL PLANS ARE PROTECTED BY FEDERAL COPYRIGHT LAWS. ANY USE OF THE INFORMATION CONTAINED HEREIN BEYOND THE ONE-TIME USE AUTHORIZED BY A PURCHASE OF PRINTS, OR ANY DUPLICATION, PUBLICATION, SALE OR DISTRIBUTION OF ANY PART OF THESE PLANS WITHOUT THE PRIOR WRITTEN CONSENT OF TRI-NORTH BUILDERS REPRESENTS A VIOLATION OF FEDERAL LAWS SUBJECT TO PENALTIES.



PROJECT:
WHITNEY POINT APARTMENTS
5402 S. WHITNEY WAY
MADISON, WI 53705

TITLE:
EXISTING EXTERIOR
BUILDING IMAGES

DRAWN BY: TMT | CHECKED BY: SH
PROJECT NO: 18001-025 | DATE: 02/05/2019