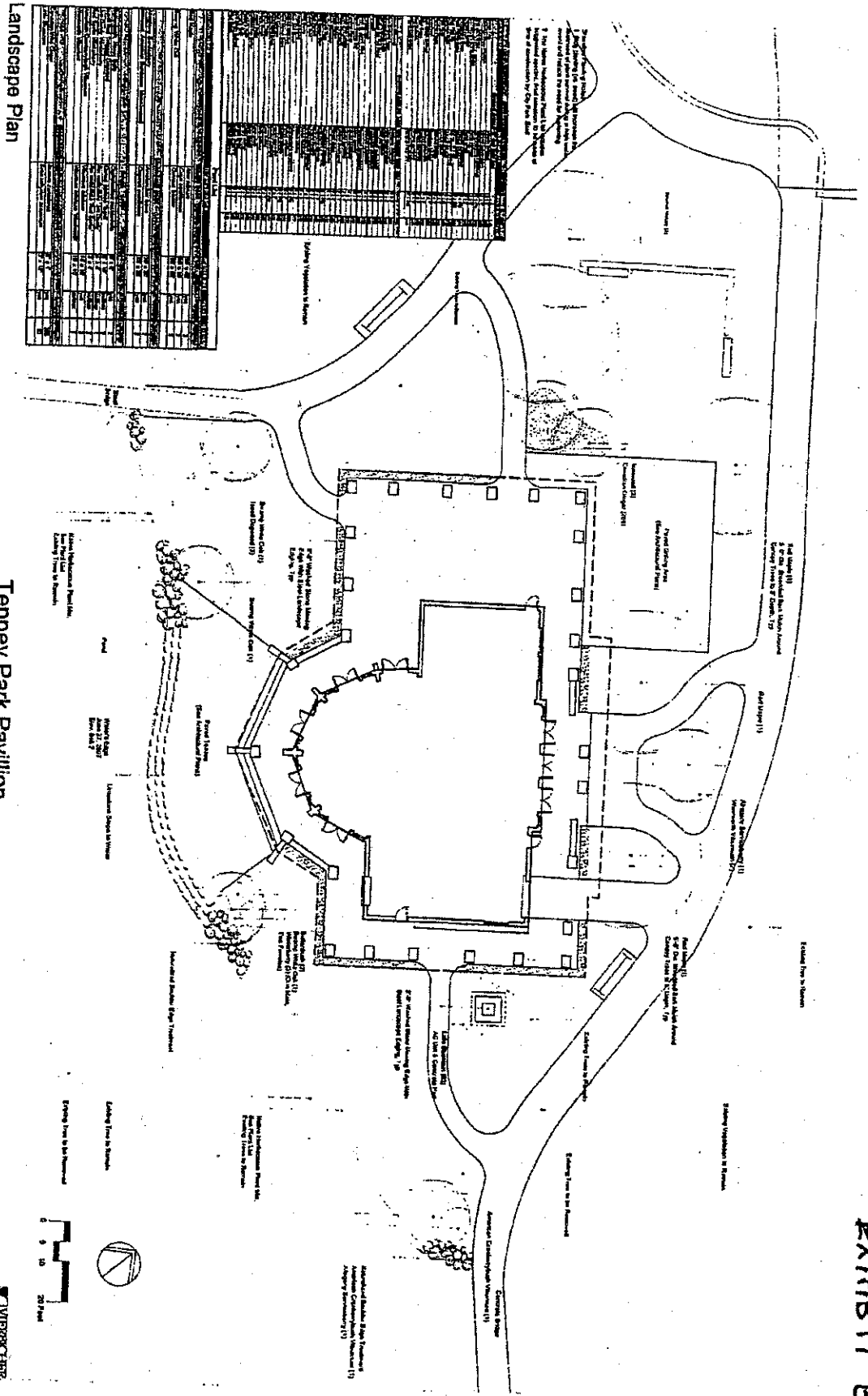


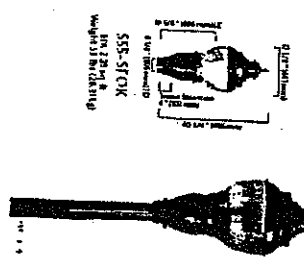
EXHIBIT B



Tenney Park Pavilion City of Madison, Wisconsin



Landscape Plan



Lighting:
 Luminaire: LUMEC Saranado DSX Series 555-SFDK
 Lamp: DL
 Finish: BK (Smooth Black)
 Pole: LUMEC Saranado Series RD0-TBC1
 Height: 18'
 Finish: BK
 Quantity: 9

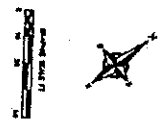
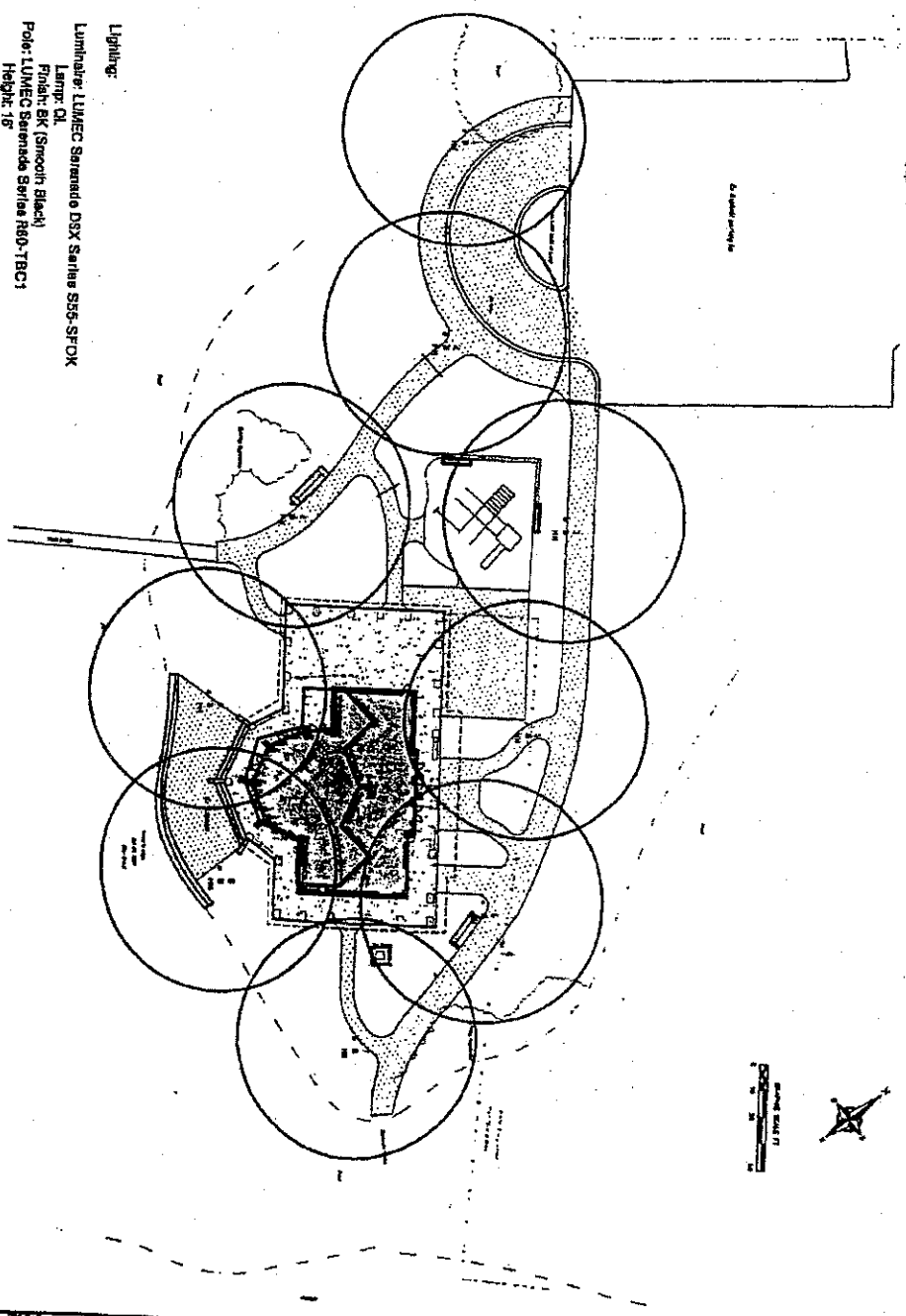


EXHIBIT C

REVISIONS		REVISED	
NO.	DATE	NO.	DATE

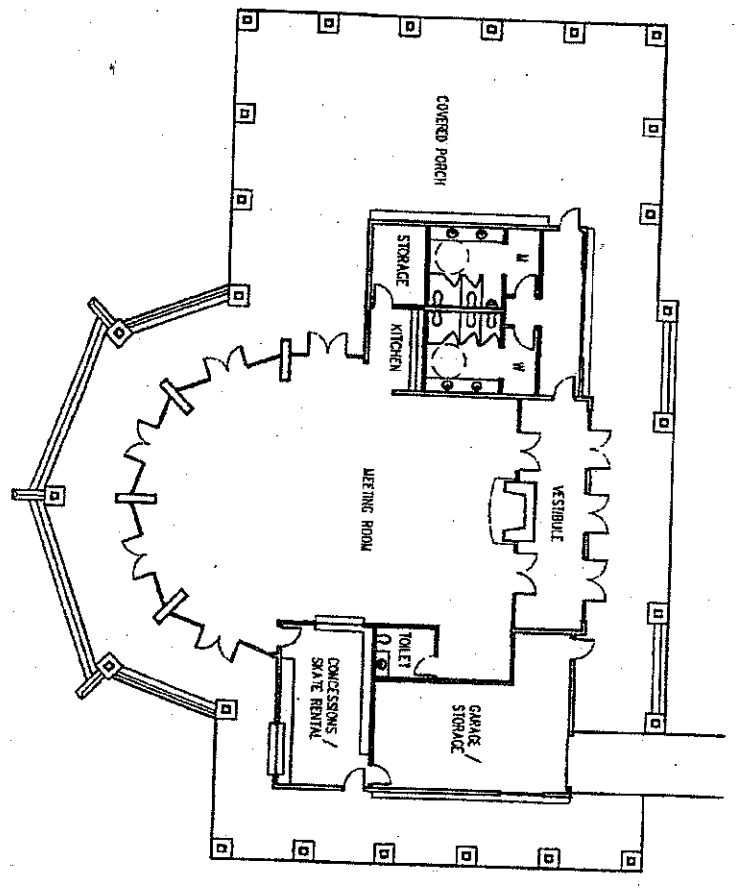
Lighting Plan
 Tenney Park Pavilion
 City of Madison
 Dane County, Wisconsin

VIERRICHER ASSOCIATES
 CONSULTANTS IN QUALITY SERVICE SINCE 1978
 1110 EAST WASHINGTON - MADISON, WI 53703
 PHONE: (608) 261-1111 FAX: (608) 261-1112

EXHIBIT D

TENNEY PARK SHELTER MADISON, WISCONSIN

Shurfelt
Associates
Architects

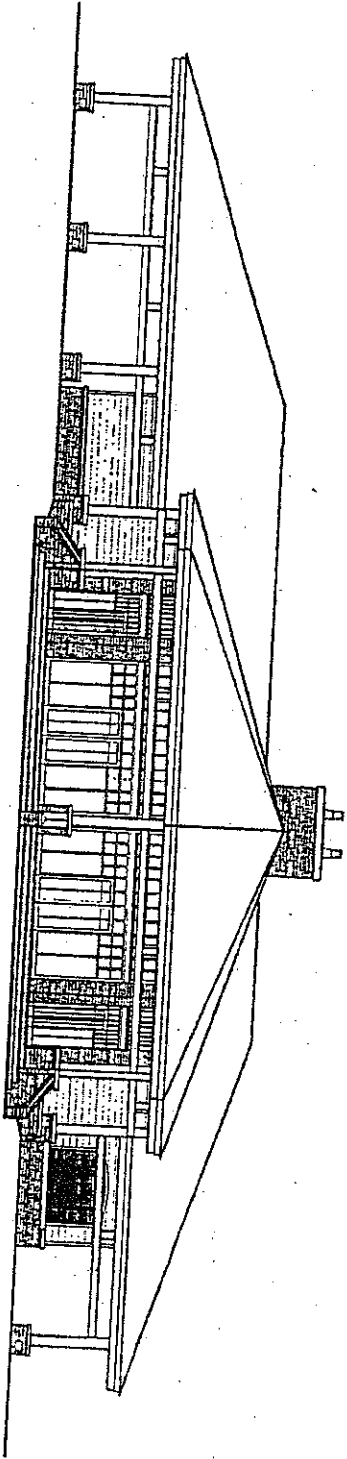


PLAN
SCALE: 1/8" = 1'-0"

DATE: 10/07/08
PROJECT: 100708

EXHIBIT E

TENNY PARK SHELTER
MADISON, WISCONSIN



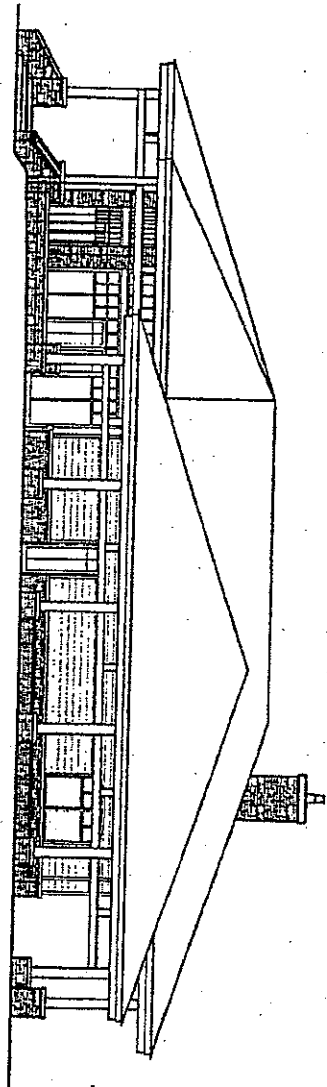
SOUTH ELEVATION

SCALE: 1/2" = 1'-0"

10.07.08

TENNY PARK SHELTER
MADISON, WISCONSIN

Blount
Associates
Architects



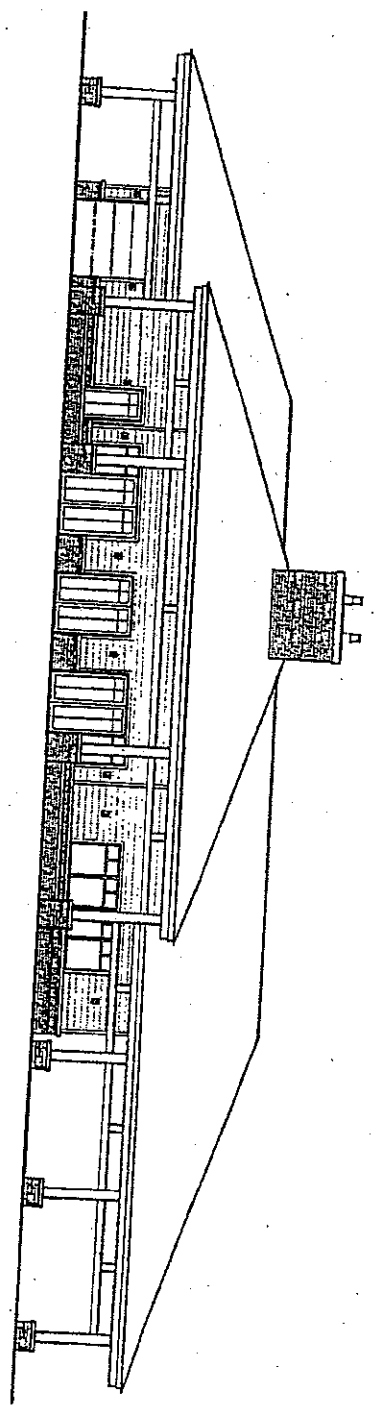
EAST ELEVATION
SCALE: 1/4" = 1'-0"

100778

EXHIBIT E

TENNY PARK SHELTER
MADISON, WISCONSIN

Blunkhoff
Architects
& Planners, Inc.



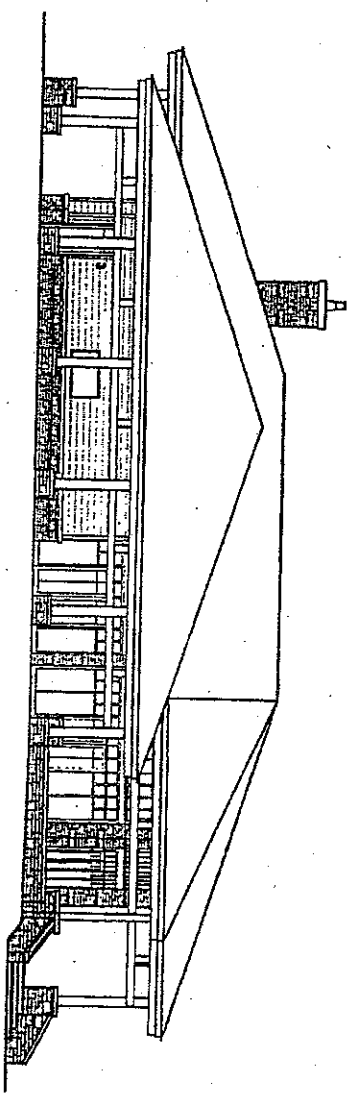
NORTH ELEVATION
SCALE: 1/2" = 1'-0"

PROJECT NAME
10.07.08

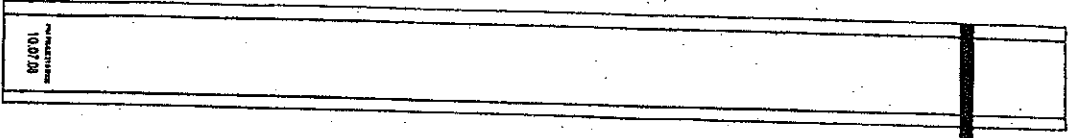
EXHIBIT E

TENNY PARK SHELTER
MADISON, WISCONSIN

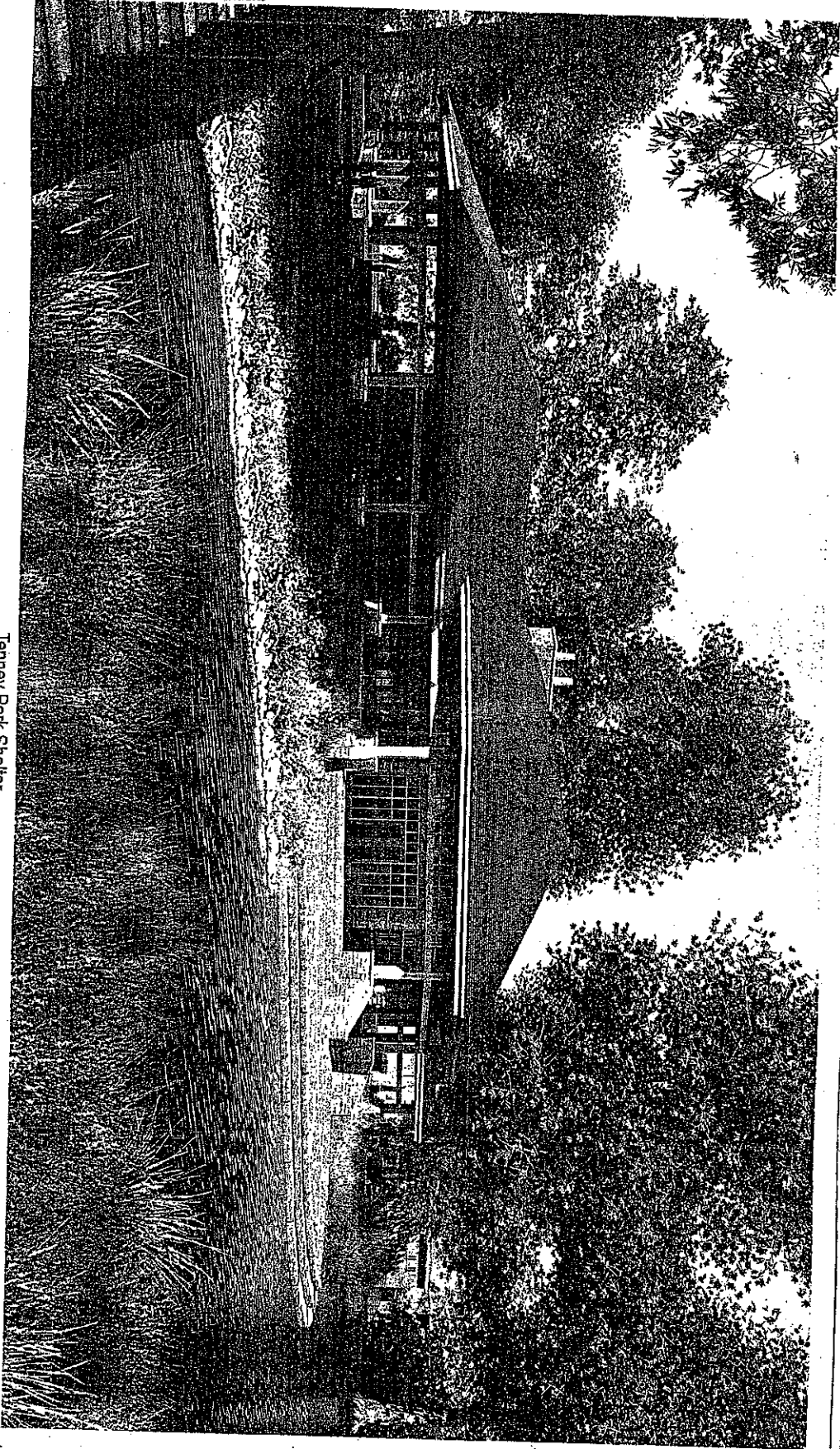
Shurtz
Ruppel
Architects



WEST ELEVATION
SCALE: 3/4" = 1'-0"



10.07.08



Tenney Park Shelter

EXHIBIT F
Tenney Park Shelter - Madison, WI



EXHIBIT "G"
TENNEY PARK PAVILION
FEE BREAKDOWN

Revised 28 August 2009

Architectural (PRA)	\$87,000	
Subtotal	\$87,000	
Civil & Landscape Design (Vierbicher)		
Civil Engineering	\$10,500	
Landscape Design	\$5,000	
Subtotal	\$15,500	
Structural/MEP Engineering (A&O)		
Structural Engineering	\$5,800	
HVAC Engineering	\$5,100	
Plumbing Engineering	\$2,900	
Electrical Engineering – including Data, Telecommunications, and Security	\$7,700	
Subtotal	\$21,500	
TOTAL A/E FEE	\$124,000	
Reimbursable Plotting, Printing & shipping costs per contract	\$8,000	
TOTAL FIXED FEE	\$132,000	