

**APPLICATION FOR  
URBAN DESIGN COMMISSION  
REVIEW AND APPROVAL**

**AGENDA ITEM #** \_\_\_\_\_  
**Project #** \_\_\_\_\_  
**Legistar #** 16829

DATE SUBMITTED: <u>04-19-2011</u>	<b>Action Requested</b>
UDC MEETING DATE: <u>April 27, 2011</u>	<input type="checkbox"/> Informational Presentation
	<input type="checkbox"/> Initial Approval and/or Recommendation
	<input checked="" type="checkbox"/> Final Approval and/or Recommendation

**PLEASE PRINT!**

**PLEASE PRINT!**

PROJECT ADDRESS: Southwest Quadrant of Anderson Street and Hoffman Street

ALDERMANIC DISTRICT: 17

OWNER/DEVELOPER (Partners and/or Principals) Michael Stark, Madison College ARCHITECT/DESIGNER/OR AGENT: Wade Wyse, P.E. - JSD Professional Services

CONTACT PERSON: Wade Wyse, P.E.  
Address: 161 Horizon Drive, Suite 101  
Verona, WI 53593  
Phone: (608) 848-5060  
Fax: (608) 848-2255  
E-mail address: wade.wyse@jsdinc.com

**TYPE OF PROJECT:**  
(See Section A for:)

- Planned Unit Development (PUD)
- General Development Plan (GDP)
- Specific Implementation Plan (SIP)
- Planned Community Development (PCD)
- General Development Plan (GDP)
- Specific Implementation Plan (SIP)
- Planned Residential Development (PRD)
- New Construction or Exterior Remodeling in an Urban Design District \* (A public hearing is required as well as a fee)
- School, Public Building or Space (Fee may be required)
- New Construction or Addition to or Remodeling of a Retail, Hotel or Motel Building Exceeding 40,000 Sq. Ft.
- Planned Commercial Site

(See Section B for:)

- New Construction or Exterior Remodeling in C4 District (Fee required)

(See Section C for:)

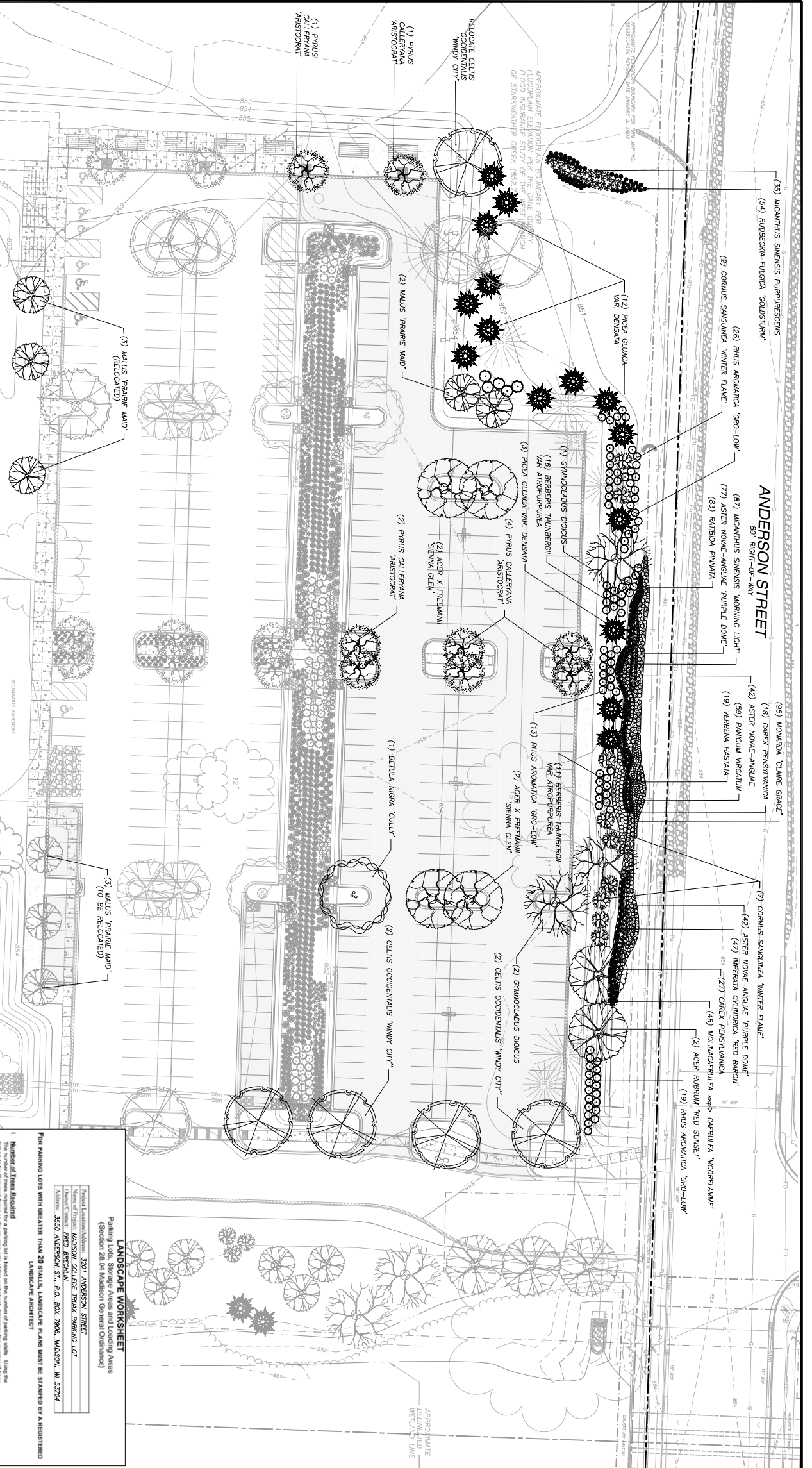
- R.P.S.M. Parking Variance (Fee required)

(See Section D for:)

- Comprehensive Design Review\* (Fee required)
- Street Graphics Variance\* (Fee required)
- Other \_\_\_\_\_

\*Public Hearing Required (Submission Deadline 3 Weeks in Advance of Meeting Date)

Where fees are required (as noted above) they apply with the first submittal for either initial or final approval of a project.



Quantity	Symbol	Botanical Name	Common Name	Size	Root
<b>CANOPY TREES</b>					
4		Acer x fraxinell 'Sennia Glen'	Sennia Glen Maple	2 1/2" Cal.	B&B
2		Acer rubrum 'Red Sunset'	Red Sunset	2 1/2" Cal.	B&B
1		Betula nigra 'Cully - multi-stem'	Heritage River Birch - multi-stem	8 HT	B&B
4		Betula occidentalis 'Windy City'	Windy City Hackberry	2 1/2" Cal.	B&B
3		Gymnocladus dioica	Kentucky Cobra-tree	2 1/2" Cal.	B&B
<b>RELOCATED</b>					
1		Malus Pyraeae Maud'	Prairie Maid Crabapple	1 1/2" Cal.	COVT
2		Prunus calleryana 'Zelkovic'	Zelkovic Callery Pear	1 1/2" Cal.	COVT
<b>EVERGREEN TREES</b>					
14		Picea glauca var. densata	Black Hills Spruce	4" HT.	COVT
<b>EXISTING</b>					
<b>DECIDUOUS SHRUBS</b>					
9		Cornus sanguinea 'Winter Flame'	Winter Flame Dogwood	#3	COVT
27		Sarcocolla ambigua var. atropurpurea	Red-twig Dogwood	#3	COVT
58		Philus sordida 'Go-Low'	Go-Low Fragrant Sumac	#3	COVT
<b>ORNAMENTAL GRASSES</b>					
47		Impatiens glandulosa 'Red Baron'	Japanese Blood Grass	1 GAL.	COVT
48		Molinis caerulea ssp. 'Cerules'	Moisture-loving Grass	1 GAL.	COVT
87		Miscanthus sinensis 'Morning Light'	Morning Light Maiden Grass	1 GAL.	COVT
<b>NATIVE GRASSES</b>					
45		Carex pensylvanica	Pennsylvania Sedge	1 GAL.	COVT
59		Phacelia virginiana	Saltgrass	1 GAL.	COVT
<b>NATIVE FORBS</b>					
42		Aster novae-angliae	New England Aster	32-cell flat	PLUG
119		Aster novae-angliae 'Purple Dome'	Purple Dome Aster	32-cell flat	PLUG
95		Mertensia virginica	Mertensia Dainty Bellflower	32-cell flat	PLUG
83		Rudbeckia hirta	Yellow Black-eyed Susan	32-cell flat	PLUG
48		Rudbeckia hirta 'Goldstrum'	Goldstrum Black-eyed Susan	32-cell flat	PLUG
19		Verbena hastata	Blue Vervain	32-cell flat	PLUG

POINT SUMMARY	
REQUIRED	644.5
ACTUAL POINTS	733.0
REQUIRED OVERALL	1,266.2
ACTUAL OVERALL	1,615.0

**LANDSCAPE WORKSHEET**  
 Parking Lots, Storage Areas and Loading Areas  
 (Section 20.04 Madison General Ordinance)

Project Location: 3550 ANDERSON STREET  
 Madison, WI 53704

Number of Trees Required: 644.57  
 Number of Shrubs Required: 0  
 Number of Plants Required: 11

Number of Landscaping Points Required: 644.57  
 Number of Plants Required: 0  
 Number of Landscaping Points Required: 11

**Legend:**  
 ORNAMENTAL TREES: PRUNUS CALLERIANA 'ARISTOCATA', MALUS PYRAEAE MAUD'  
 EVERGREEN TREES: PICEA GLAUCA VAR. DENSA  
 DECIDUOUS SHRUBS: CORNUS SANGUINEA WINTER FLAME'  
 GRASSES AND FORBS: SEE PLAN

**LEGEND**  
 EDGING  
 PROJECT SITE  
**LANDSCAPE NOTES**

- SEE PROJECT MANUAL FOR LANDSCAPE SPECIFICATIONS AND PLANNING DETAILS.
- REFER TO THE TOPOGRAPHIC AND UTILITY MAP FOR EXISTING CONDITIONS NOTES AND LEGEND.
- ANY DEVIATIONS BY THE OWNER/CONTRACTOR FROM THE DISCIPLINARY ACTIONS BY AN OR ALL REGULATORY AGENCIES.
- PREPARE FOR REVIEW - NOT FOR CONSTRUCTION UNLESS OTHERWISE NOTED IN THE TITLE BLOCK.
- PRESERVE & PROTECT ALL EXISTING TREES TO REMAIN ON SITE.

**LEGEND (PROPOSED PLANTS)**  
**CANOPY TREES**  
 ACER X FRAXINELL 'SENNIA GLEN'  
 ACER RUBRUM 'RED SUNSET'  
 BETULA NIGRA 'CULLY' MULTI-STEM  
 CELTIS OCCIDENTALIS 'WINDY CITY'  
 GYMNOCLADUS DIOICIS  
 MALUS PYRAEAE MAUD'  
 PRUNUS CALLERIANA 'ARISTOCATA'

**ORNAMENTAL TREES**  
 PRUNUS CALLERIANA 'ARISTOCATA'

**EVERGREEN TREES**  
 PICEA GLAUCA VAR. DENSA

**DECIDUOUS SHRUBS**  
 CORNUS SANGUINEA WINTER FLAME'

**GRASSES AND FORBS**  
 SEE PLAN

**JSD Professional Services, Inc.**  
 "BUILDING RELATIONSHIPS WITH A COMMITMENT TO TRUST, QUALITY AND EXPERIENCE"  
 CIVIL ENGINEERING  
 SURVEYING & MAPPING  
 CONSTRUCTION SERVICES  
 WATER RESOURCES  
 PLANNING & DESIGN OPERATIONS  
 LANDSCAPE ARCHITECTURE  
 MADISON REGIONAL OFFICE  
 161 HORIZON DRIVE, SUITE 101  
 VERONA, WISCONSIN 53593  
 608.848.5060 PHONE | 608.848.2255 FAX  
 MADISON | MILWAUKEE | KENOSHA  
 www.jsdinc.com

SERVICES PROVIDED TO:  
**MADISON COLLEGE**  
 3550 ANDERSON ST  
 MADISON, WI 53704

PROJECT LOCATION:  
**MADISON COLLEGE**  
 PARKING EXPANSION

JSD PROJECT NO.: 09-3867  
 SEAL/SIGNATURE:  
 DATE: 11-5-09  
 DRAWN: SCL  
 APPROVED: MAS

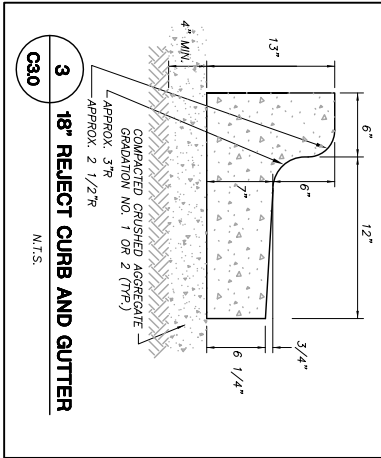
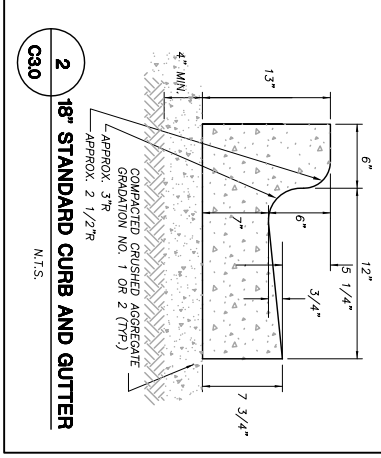
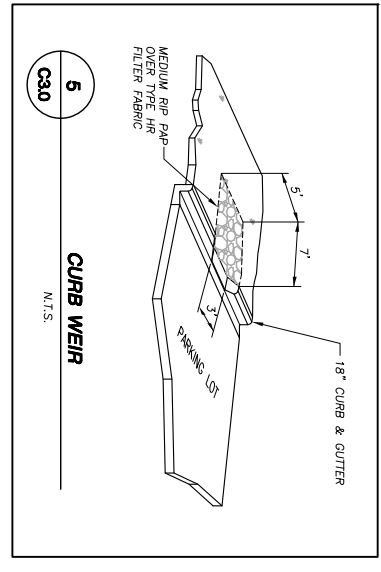
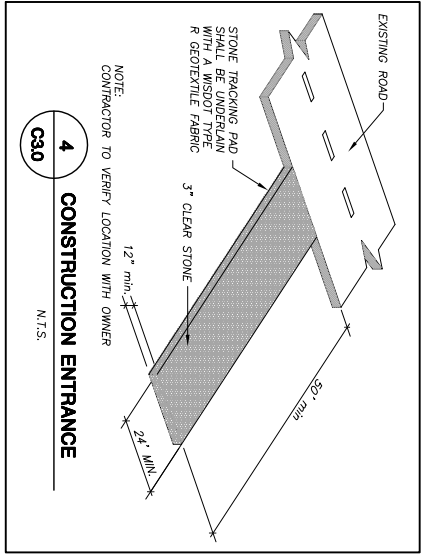
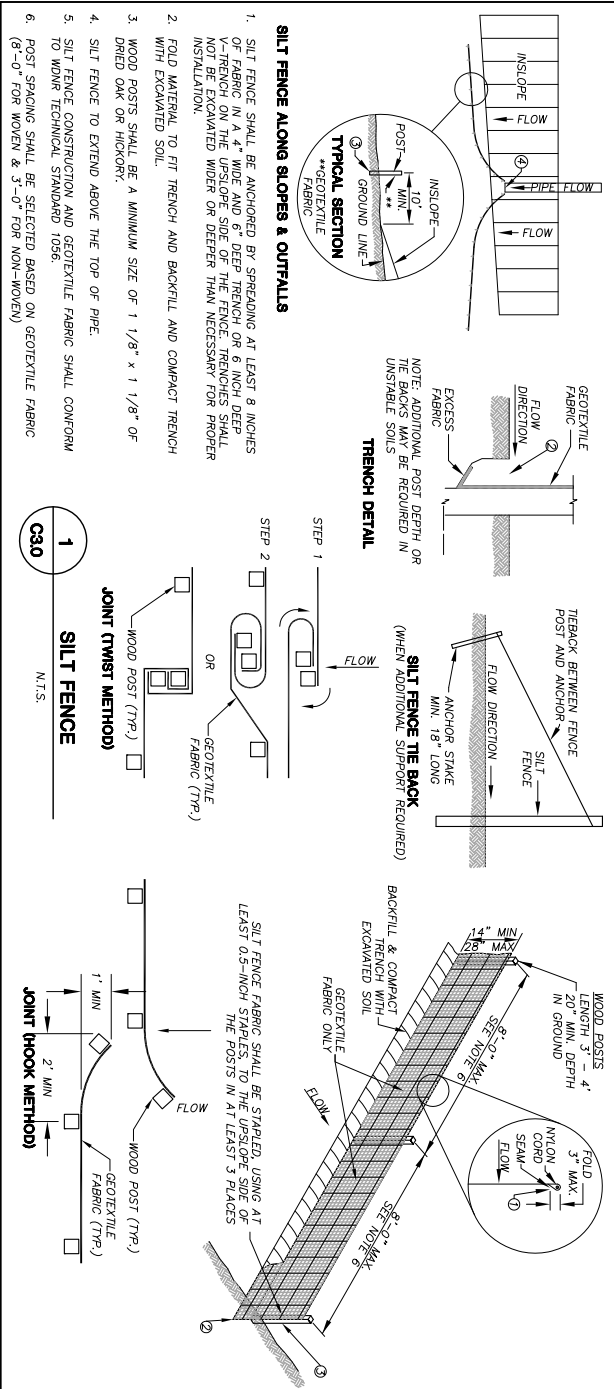
PLANNING & DESIGN OPERATIONS:  
 CITY OF MADISON: 12-29-08  
 CITY OF MADISON: 2-24-10  
 CITY OF MADISON: 4-6-10  
 CITY OF MADISON: 4-15-10  
 CLIENT REVIEW: 4-23-10  
 BID DOCUMENT CONSTRUCTION BULLETIN #1: 1-20-10  
 DMC REVIEW: 4-06-11

ALTHOUGH EVERY EFFORT HAS BEEN MADE IN PREPARING THESE PLANS AND CHECKING AND SUBCONTRACTORS MUST CHECK ALL DETAIL AND DIMENSIONS OF THEIR TRADE AND BE RESPONSIBLE FOR THE SAME.

**DIGESTERS & HOTLINE**  
 Toll Free (800) 242-8511  
 Milwaukee Area (414) 259-1181  
 Hearing Impaired TDD (800) 542-2289  
 www.DigesterHotline.com

SHEET TITLE:  
**LANDSCAPE PLAN**

SHEET NUMBER:  
**L-1.0**



**2 18" STANDARD CURB AND GUTTER**  
N.T.S.

**3 18" REJECT CURB AND GUTTER**  
N.T.S.

DESIGN: DOS 11-45-09  
DRAWN: DOS 11-45-09  
APPROVER: WHW  
PLAN MODIFICATIONS: DATE:  
CITY OF MADISON 2-24-10  
CITY OF MADISON 4-06-11  
CITY OF MADISON 4-18-11

ALTHOUGH EVERY EFFORT HAS BEEN MADE IN PREPARING THESE PLANS AND CHECKING THE ACCURACY OF THE DIMENSIONS AND SUBCONTRACTORS MUST CHECK ALL DETAIL AND DIMENSIONS OF THEIR TRADE AND BE RESPONSIBLE FOR THE SAME.

DESIGN: DOS 11-45-09  
DRAWN: DOS 11-45-09  
APPROVER: WHW  
PLAN MODIFICATIONS: DATE:  
CITY OF MADISON 2-24-10  
CITY OF MADISON 4-06-11  
CITY OF MADISON 4-18-11

SERVICES PROVIDED TO:  
**MADISON COLLEGE**

3550 ANDERSON ST  
MADISON, WI 53704

**MADISON COLLEGE  
PARKING EXPANSION  
PHASE II**

PROJECT LOCATION:  
MADISON, WI

JSD PROJECT NO.: 09-3867

SERVICES PROVIDED TO:  
**MADISON COLLEGE**

3550 ANDERSON ST  
MADISON, WI 53704

**MADISON COLLEGE  
PARKING EXPANSION  
PHASE II**

PROJECT LOCATION:  
MADISON, WI

JSD PROJECT NO.: 09-3867

**JSD Professional Services, Inc.**  
"ENGINEERS • SURVEYORS • PLANNERS"  
"BRIDGING REAL TRANSFORMERS WITH A COMMITMENT TO EXCELLENCE THROUGH TECHNICAL QUALITY AND EXPERIENCE"

- CIVIL ENGINEERING
- SURVEYING & MAPPING
- CONSTRUCTION SERVICES
- WATER RESOURCES
- PLANNING & DEVELOPMENT
- TRANSPORTATION ENGINEERING
- LANDSCAPE ARCHITECTURE

MADISON REGIONAL OFFICE  
161 HORIZON DRIVE SUITE 101  
VERONA, WISCONSIN 53593  
608.848.5060 PHONE | 608.848.2255 FAX  
MADISON | MILWAUKEE | KENOSHA  
www.jsdinc.com

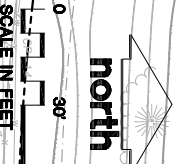
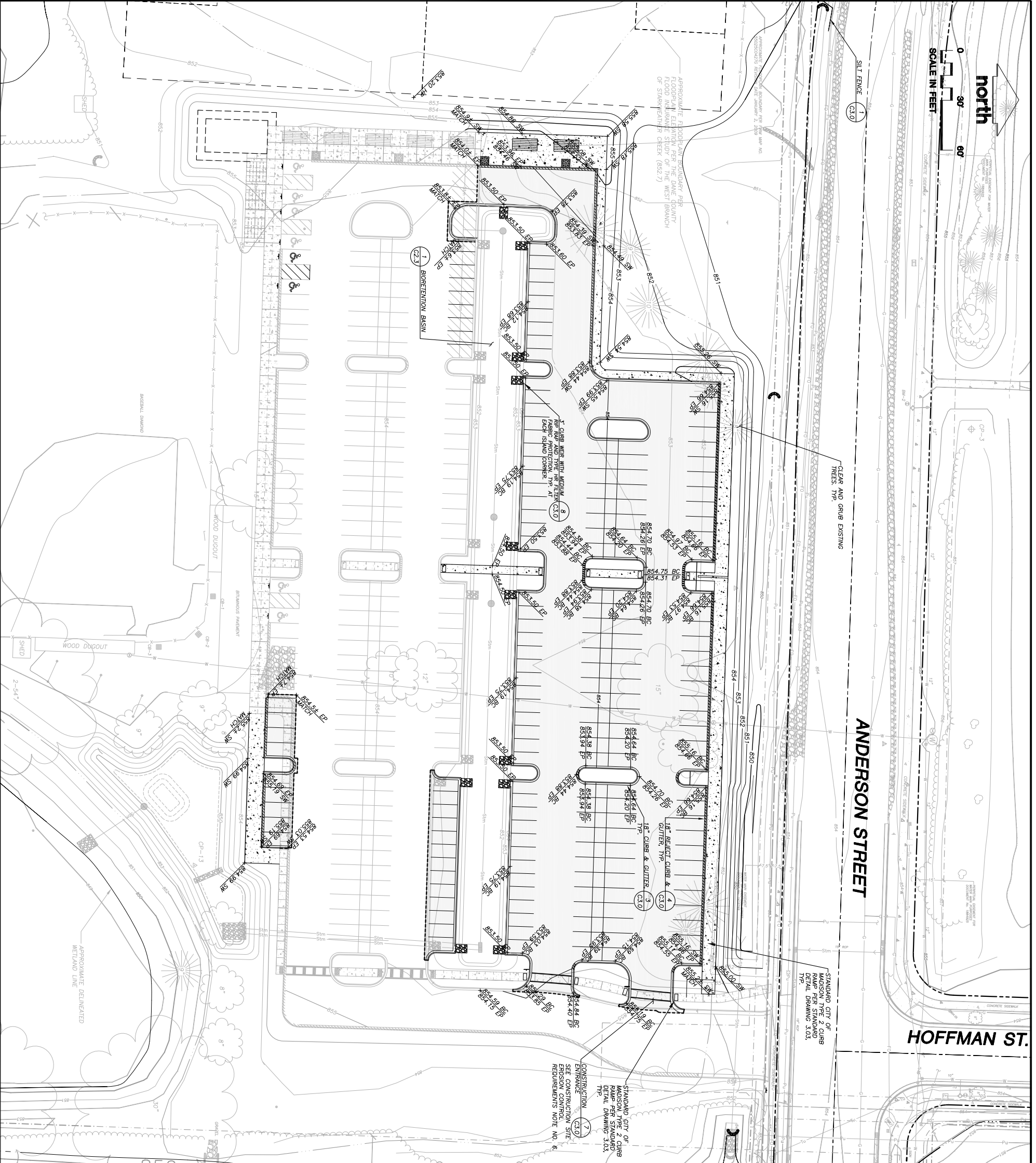
Toll Free (800) 242-8511  
Milwaukee Area (414) 258-1181  
Hearing Impaired TDD (800) 542-2289  
www.JSDgetitOnline.com

**DIGESTERS & ROTLINE**

SHEET TITLE:  
**DETAILS**

SHEET NUMBER:  
**C-3.0**

THESE PLANS AND DESIGNS ARE COPYRIGHT PROTECTED AND MAY NOT BE USED IN WHOLE OR IN PART WITHOUT THE WRITTEN CONSENT OF JSD PROFESSIONAL SERVICES, INC.



ANDERSON STREET

HOFFMAN ST.

**LEGEND (PROPOSED)**

	PROPERTY LINE
	PROPOSED 1 FOOT CONTOUR
	PROPOSED 5 FOOT CONTOUR
	APPROXIMATE WETLAND LINE
	APPROXIMATE FLOOD PLAIN LINE
	EDGE OF PAVEMENT
	SILT FENCE
	EDGE OF CONCRETE CURB & GUTTER
	SMCUT
	18\"/>
	ASPHALT PAVEMENT
	CONCRETE PAVEMENT
	SPOT ELEVATION
	EP - EDGE OF CURB
	FP - STRUCTURE FIM
	EC - EDGE OF CONCRETE
	FG - FINAL GRADE
	HP - HIGH POINT

**GENERAL NOTES**

- REFER TO THE EXISTING CONDITIONS SURVEY FOR EXISTING CONDITIONS NOTES AND LEGENDS. EXISTING CONDITIONS SURVEY PERFORMED BY JSD IN OCTOBER 2009.
- ALL WORK IN THE ROW SHALL BE IN ACCORDANCE WITH THE CITY OF MADISON STANDARD SPECIFICATIONS FOR PUBLIC WORKS CONSTRUCTION.
- EXISTING GRADE SPOT ELEVATIONS SHOWN FOR INFORMATIONAL PURPOSES. DURING CONSTRUCTION MATCH EXISTING GRADES AT PROPERTY BOUNDARIES.
- NO SITE GRADING OUTSIDE OR OVERSIGHT OF PROPOSED SILT FENCE LOCATION. NO LAND DISTURBANCE BETWEEN PROPERTY LINES.
- THIS PROJECT HAS BEEN DESIGNED AND WILL BE CONSTRUCTED IN COMPLIANCE WITH ALL OF THE WORK GENERAL PERMIT APPLICATION EUBLUBIT STANDARDS.
- JSD SHALL BE HELD HARMLESS AND DOES NOT WARRANT ANY OPINIONS BY THE OWNER/CONTRACTOR FROM THE APPROVED CONSTRUCTION PLANS THAT MAY RESULT IN DISCIPLINARY ACTIONS BY ANY OR ALL REGULATORY AGENCIES.
- DRAWING FOR REVIEW - NOT FOR CONSTRUCTION UNLESS OTHERWISE NOTED IN THE TITLE BLOCK.

**CONSTRUCTION SITE EROSION CONTROL REQUIREMENTS**

- ALL EROSION AND SEDIMENT CONTROL PRACTICES SHALL BE DESIGNED AND IMPLEMENTED IN ACCORDANCE WITH THE CURRENT DEPARTMENT OF NATURAL RESOURCES EROSION AND SEDIMENT CONTROL TECHNICAL STANDARDS WHICH ARE AVAILABLE AT: <http://www.dnr.state.wi.us/dnr/stormwater/reborders.htm>
- INSTALL EROSION CONTROL MEASURES PRIOR TO ANY SITE WORK, INCLUDING GRADING OR DISTURBANCE OF EXISTING SURFACE MATERIALS AS SHOWN ON PLAN. MODIFICATIONS TO SEDIMENT CONTROL DESIGN MAY BE CONDUCTED TO MEET UNUSUAL OR UNUSUAL FIELD CONDITIONS IF MODIFICATIONS CONTRADICT WORK TECHNICAL STANDARDS.
- INSPECTIONS AND MAINTENANCE OF ALL EROSION CONTROL MEASURES SHALL BE CONDUCTED WEEKLY THROUGHOUT EROSION CONTROL MEASURES ARE TO BE IN WORKING ORDER AT THE END OF EACH WORK DAY.
- INSPECT EROSION CONTROL MEASURES AFTER EACH 1/2" OR GREATER RAINFALL. REPAIR ANY DAMAGE OBSERVED DURING THE INSPECTION.
- EROSION CONTROL MEASURES SHALL BE REMOVED ONLY AFTER SITE CONSTRUCTION IS COMPLETE WITH ALL SOIL SURFACES HAVING AN ESTABLISHED VEGETATIVE COVER.
- INSTALL A TRACKING PAD, 50' LONG AND NO LESS THAN 12" THICK BY USE OF 3" CLEAR STONE. TRACKING PADS ARE TO BE MAINTAINED BY THE CONTRACTOR IN A CONDITION WHICH WILL PREVENT THE TRACKING OF MUD OR OTHER SEDIMENT ONTO THE ADJACENT PUBLIC STREETS AFTER EACH WORKING DAY OR MORE FREQUENTLY AS REQUIRED BY THE CITY OF MADISON.
- INSTALL EROSION CONTROLS ON THE DOWNSTREAM SIDE OF STOCKPILES.
- INSTALL CHECK DAMS WITH DRAINAGE DITCHES AND IN FRONT OF SLIT FENCING IN ANY LOW AREA ALL IN ACCORDANCE WITH WORK TECHNICAL STANDARDS.
- EROSION CONTROL FOR UTILITY CONSTRUCTION (STORM SEWER, SANITARY SEWER, WATER MAIN, ETC.):  
A. BACKFILL TRENCH MATERIAL ON THE HIGH SIDE OF THE TRENCH.  
B. COMPACT, AND STABILIZE THE TRENCH IMMEDIATELY AFTER PILE DISCHARGE. TRENCH WATER INTO A SEDIMENTATION BASIN OR FILTERING TANK.  
C. DISCHARGE TRENCH WATER INTO THE TRENCH IMMEDIATELY AFTER PILE TO RELEASE INTO THE STORM SEWER, RECEIVING STREAM, OR DRAINAGE DITCH.
- INSTALL TREE BARRIER PROTECTION AROUND ALL STORM SEWER INLETS AND CATCH BASINS THAT MAY RECEIVE RUNOFF FROM ADJACENT CONSTRUCTION. REFER TO WSDOT FDM FOR RESPECTIVE DETAILS.
- APPLY ANIONIC POLYMER TO DISTURBED AREAS IF EROSION BECOMES PROBLEMLIC.
- ADDITIONAL EROSION CONTROL MEASURES, AS REQUESTED BY STATE INSPECTORS, LOCAL INSPECTORS, AND/OR ENGINEER SHALL BE INSTALLED WITHIN 24 HOURS OF REQUEST.
- ALL SLOPES EXCEEDING 5:1 (20%) AND DRAINAGE SWALES SHALL BE STABILIZED WITH CLASS 1, TYPE B EROSION MATING OR APPLICATION OF A WOOL APPROVED POLYMER SOIL STABILIZATION TREATMENT OR A COMBINATION THEREOF, AS REQUIRED. CONTRACTOR SHALL PROVIDE PRODUCT SPECIFICATIONS TO PROJECT ENGINEER FOR APPROVAL.
- CONTRACTOR/OWNER SHALL FILE A NOTICE OF TERMINATION UPON VEGETATIVE STABILIZATION AND/OR PROPERTY SALE IN ACCORDANCE WITH WDMR AND WDOMM REQUIREMENTS.

**GRADING AND SEEDING NOTES**

- ALL DISTURBED AREAS SHALL BE SEEDED AND MULCHED IMMEDIATELY FOLLOWING GRADING ACTIVITIES. SEED MIX TO BE IN ACCORDANCE WITH LANDSCAPE PLAN.
- ALL PROPOSED GRADES SHOWN ARE FINISHED GRADES. CONTRACTOR SHALL VERIFY ALL PROPOSED GRADES AND SHALL REPORT ANY DISCREPANCIES TO THE ENGINEER PRIOR TO CONSTRUCTION.
- CONTRACTOR SHALL PROTECT ADJACENT PROPERTIES WITH SILT FENCING FOR EROSION CONTROL DURING CONSTRUCTION.
- CONTRACTOR SHALL CHISEL-PLow OR DEEP TILL WITH DOUBLE TIMES THE BROUGHTON AND PAIN GARDEN AREAS JUST PRIOR TO SEEDING AND MULCHING TO PROMOTE INFILTRATION.
- CONTRACTOR SHALL WATER ALL NEWLY SEEDS AREAS DURING THE SUMMER MONTHS WHENEVER THERE IS A 7 DAY LAPSE WITH NO SIGNIFICANT RAINFALL.
- CONTRACTOR TO DEEP TILL ALL COMPACTED PREVIOUS SURFACES PRIOR TO SEEDING AND MULCHING.

**JSD Professional Services, Inc.**  
 Engineers • Surveyors • Planners  
 "BUILDING BETTER THINGS WITH A COMMITMENT TO INTEGRITY AND EXCELLENCE"  
 CIVIL ENGINEERING  
 SURVEYING & MAPPING  
 CONSTRUCTION SERVICES  
 WATER RESOURCES  
 PLANNING & DEVELOPMENT  
 TRANSPORTATION ENGINEERING  
 LANDSCAPE ARCHITECTURE  
 MADISON REGIONAL OFFICE  
 161 HORIZON DRIVE SUITE 101  
 VERONA, WISCONSIN 53593  
 608.848.5060 PHONE | 608.848.2255 FAX  
 MADISON | MILWAUKEE | KENOSHA  
[www.jsdinc.com](http://www.jsdinc.com)

SERVICES PROVIDED TO:  
**MADISON COLLEGE**  
 3550 ANDERSON ST  
 MADISON, WI 53704

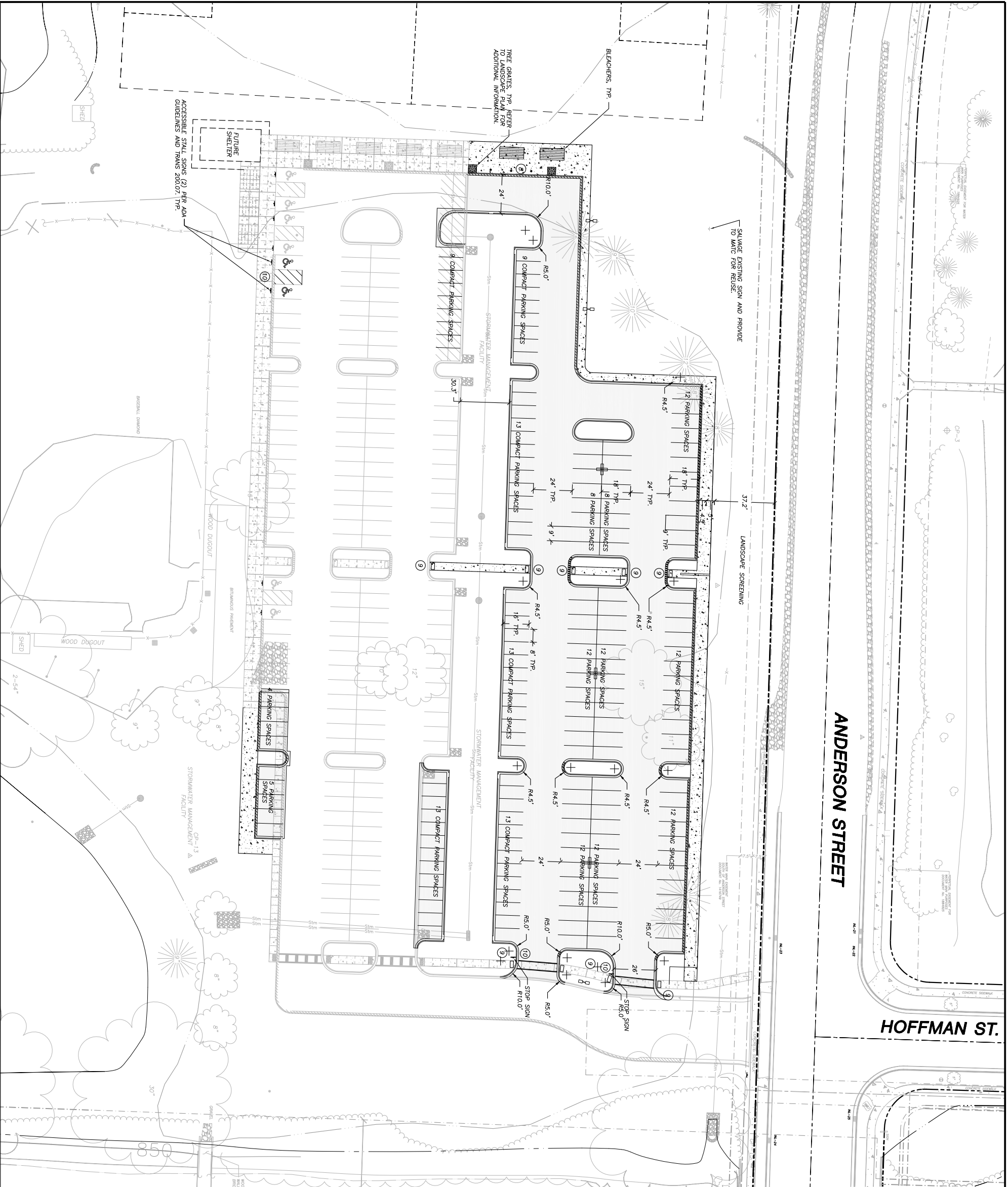
**MADISON COLLEGE  
 PARKING EXPANSION  
 PHASE II**  
 PROJECT LOCATION:  
 MADISON, WI  
 JSD PROJECT NO.: 09-3867  
 SEALSIGNATURE:  
 DESIGNED BY: DOS  
 DRAWN BY: DOS  
 CHECKED BY: DOS  
 APPROVED BY: WYW

ALTHOUGH EVERY EFFORT HAS BEEN MADE IN PREPARING THESE PLANS AND CHECKING ALL SUBCONTRACTORS MUST CHECK ALL DETAIL AND DIMENSIONS OF THEIR TRADE AND BE RESPONSIBLE FOR THE SAME.

PLAN MODIFICATIONS:	DATE:
CITY OF MADISON	11-06-09
CITY OF MADISON	11-23-09
CITY OF MADISON	12-08-09
CITY OF MADISON	12-29-09
CITY OF MADISON	2-24-10
CITY OF MADISON	4-6-11
CITY OF MADISON	4-19-11

**DIGESTERS & HOTLINE**  
 Milwaukee Area (414) 258-1181  
 Heering Ingotter (708) (800) 542-2289  
[www.diggerhotline.com](http://www.diggerhotline.com)  
 Toll Free (800) 242-8511

SHEET TITLE:  
**GRADING AND  
 EROSION CONTROL  
 PLAN**  
 SHEET NUMBER:  
**C-2.0**



# ANDERSON STREET

# HOFFMAN ST.

**LEGEND (PROPOSED)**

- PROPERTY LINE
- EDGE OF PAVEMENT
- STORMWATER BASIN OUTLINE
- BERM OUTLINE
- ASPHALT PAVEMENT
- CONCRETE PAVEMENT
- LIGHT FIXTURE, REFER TO LIGHTING PLANS
- TREE GRATE, REFER TO LANDSCAPE PLANS
- BOLLARD

**GENERAL NOTES**

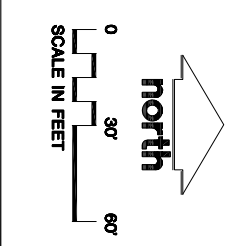
1. REFER TO THE EXISTING CONDITIONS SURVEY FOR EXISTING CONDITIONS. THE EXISTING CONDITIONS SURVEY PERFORMED BY JSD IN OCTOBER 2009.
2. ALL WORK IN THE ROW SHALL BE IN ACCORDANCE WITH THE CITY OF MADISON SPECIFICATIONS FOR PUBLIC WORKS CONSTRUCTION.
3. EXISTING GRADE SPOT ELEVATIONS SHOWN FOR INFORMATIONAL PURPOSES ONLY. CONSTRUCTION SHALL MATCH EXISTING GRADES AT PROPERTY BOUNDARIES.
4. NO SITE GRADING OUTSIDE OR DOWNSLOPE BEYOND PROPERTY LINE.
5. THIS PROJECT HAS BEEN DESIGNED AND WILL BE CONSTRUCTED IN COMPLIANCE WITH ALL OF THE MDNR GENERAL PERMIT APPLICATION ELIGIBILITY STANDARDS.
6. JSD SHALL BE HELD HARMLESS AND DOES NOT WARRANT ANY DEVIATIONS BY THE OWNER/CONTRACTOR FROM THE APPROVED CONSTRUCTION PLAN. THE CONTRACTOR SHALL BE RESPONSIBLE FOR OBTAINING ALL NECESSARY PERMITS AND REGULATORY AGENCIES.
7. DRAWING FOR REVIEW - NOT FOR CONSTRUCTION UNLESS OTHERWISE NOTED IN THE TITLE BLOCK.

**PARKING LOT PLAN SITE INFORMATION**

SITE ADDRESS: ANDERSON STREET AND HOFFMAN STREET  
 SITE AREA: 5.50 ACRES  
 NUMBER OF BUILDING STORES (ABOVE GRADE): N/A  
 TYPE OF CONSTRUCTION: N/A  
 TOTAL SQUARE FOOTAGE OF BUILDING: N/A  
 USE OF PROPERTY: ATHLETIC FIELDS AND PARKING LOT  
 GROSS SQUARE FEET OF OFFICE: N/A  
 TYPE OF CONSTRUCTION: N/A  
 GROUND COVER: N/A  
 NUMBER OF EXISTING BIKE STALLS SHOWN: 36  
 NUMBER OF PARKING STALLS:  
 SMALL CAR  
 NEW = 70  
 EXISTING = 24  
 LARGE CAR  
 NEW = 107  
 EXISTING = 111  
 ACCESSIBLE  
 NEW = 2  
 EXISTING = 6  
 TOTAL STALLS = 320  
 NEW = 178  
 EXISTING = 142

**SITE PLAN NOTES**

1. ALL WORK WITHIN THE PUBLIC RIGHT-OF-WAY WILL BE DESIGNED AND CONSTRUCTED BY THE CITY OF MADISON AND UNDER SUPERVISORIAL CONTROL AS SHOWN.
2. ALL DIMENSIONS TO FACE OF CURB UNLESS OTHERWISE NOTED.
3. ALL RADIUS TO FACE OF CURB UNLESS OTHERWISE NOTED.
4. ALL CURB AND GUTTER IS 18" CURB AND GUTTER UNLESS OTHERWISE NOTED.
5. USE 4" WIDE, HIGH VISIBILITY WHITE PAINT FOR STALL LINES PER MUTC STANDARDS.
6. MARK AND STRIPE ADA PARKING SPACES APPROPRIATELY.
7. 6" MINIMUM DEPTH CONCRETE SLAB ON GRADE WITH #3 REBAR.
8. 30" HIGH, 6" DIAMETER CONCRETE BOLLARD PER MUTC STANDARDS.
9. 2' x 4' TRUNCATED DOME SECTIONS.
10. SIGNS TO MEET MUTC AND DIMENSIONS AND SHALL BE INSTALLED AT A HEIGHT OF SEVEN FEET.



**JSD Professional Services, Inc.**  
 Engineers • Surveyors • Planners  
 "BUILDING RELATIONSHIPS WITH A COMMITMENT TO EXCELLENCE THROUGH TRUST, QUALITY AND EXPERIENCE"  
 • CIVIL ENGINEERING  
 • SURVEYING & MAPPING  
 • CONSTRUCTION SERVICES  
 • WATER RESOURCES  
 • PLANNING & DEVELOPMENT  
 • TRANSPORTATION ENGINEERING  
 • LANDSCAPE ARCHITECTURE  
 MADISON REGIONAL OFFICE  
 161 HORIZON DRIVE, SUITE 101  
 VERONA, WISCONSIN 53593  
 608.848.5060 PHONE | 608.848.2255 FAX  
 MADISON | MILWAUKEE | KENOSHA  
 www.jsdinc.com

SERVICES PROVIDED TO:  
**MADISON COLLEGE**  
 3550 ANDERSON ST  
 MADISON, WI 53704

PROJECT LOCATION:  
**MADISON COLLEGE PARKING EXPANSION PHASE II**  
 JSD PROJECT NO.: 09-3867  
 SEALSUBMITTER: MADISON, WI

DESIGN: DOS 11-05-09  
 DRAWN: DOS 11-05-09  
 APPROVED: WWH

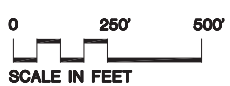
PLAN MODIFICATIONS:	DATE:
CITY OF MADISON	11-05-09
CITY OF MADISON	11-29-09
CITY OF MADISON	12-08-09
CITY OF MADISON	12-29-09
CITY OF MADISON	2-24-10
CITY OF MADISON	04-06-11
CITY OF MADISON	04-19-11

ALTHOUGH EVERY EFFORT HAS BEEN MADE IN PREPARING THESE PLANS AND CHECKING AND SUBCONTRACTORS MUST CHECK ALL DETAIL AND DIMENSIONS OF THEIR TRADE AND BE RESPONSIBLE FOR THE SAME.

**DIGGERS HOTLINE**  
 Milwaukee Area (414) 258-1181  
 Hearing Impaired TDD (800) 542-2289  
 www.diggershotline.com

Toll Free (800) 242-8511

SHEET TITLE:  
**SITE PLAN FINAL BUILD OUT**  
 SHEET NUMBER:  
**C-1.1**



File: J:\2009\09-3867\CIVIL DESIGN\_Private\_no\_street.dwg Layout: 8.5x11port User: dos Plotted: Dec 04, 2009 - 1:55pm

**JSD** Professional Services, Inc.  
 • Engineers • Surveyors • Planners

MADISON REGIONAL OFFICE  
 161 HORIZON DRIVE, SUITE 101  
 VERONA, WISCONSIN 53593  
 608.848.5060 PHONE | 608.848.2255 FAX

[www.jsdinc.com](http://www.jsdinc.com)

PROJECT:  
**MADISON COLLEGE  
 PARKING EXPANSION**

MADISON, WI

SHEET TITLE:  
**AREA - WIDE  
 LOCATION MAP**

JSD PROJECT NUMBER:  
 09-3867

DRAWN BY: DOS    APPROVED: WPW

DATE:  
 12-04-09

SHEET NUMBER:



# ROADSTAR™

SERIES

**PHILIPS**  
**LUMEC**



[asimpleswitch.com](http://asimpleswitch.com)



GPLM-DC6

GPLS-PC4

# ROADSTAR™ SERIES

**Pure Performance. Built To Last.** / The most efficient engine on the eternal road of life. The RoadStar™ luminaire was designed to address a fundamental need in the lighting industry for affordable, high-performance, energy efficient, and long lasting large-area LED lighting that is at once as good for the environment as it is for a project's bottom line.

The RoadStar™ is dark-sky compliant, will last well over 70,000 hours, casts the perfect amount of uniform light with exactly the desired intensity, and offers pole spacing that is at least as wide as current HID lighting.









## PURE PERFORMANCE

**All LED luminaires are not created equal, even if they all use the same technological principles. /**

The RoadStar™ was created with a noble goal in mind: to help those responsible for lighting our world succeed in their energy conservation goals through affordable optimal photometric performance. The RoadStar™ is manufactured responsibly, and it contributes in a no-nonsense way by containing no hazardous substances, by reducing energy consumption, by lowering greenhouse gas emissions, and preserving the night sky.







## **The performance, lifespan, and efficiency of the RoadStar™ changes the way the entire game is played. /**

Philips Lumec LED lighting is known around the world for its lower energy consumption and higher lumen output over the life of their luminaries. The RoadStar™, with its over 70,000 hour lifespan, pushes that concept to the absolute maximum. It gives all project directors, from those at various Departments of Transportation to those in municipalities, from major corporations to responsible private projects, the opportunity to meet their energy conservation goals without sacrificing performance, beauty, or safety. The RoadStar™ is more than a luminaire; it's a source of professional and ethical pride.





## BUILT TO LAST

**This versatile lighting solution was designed to last. /**

Its durable construction, low maintenance needs, and toolfree access to components, makes it an elegantly powerful solution that meets or exceeds even the highest of expectations. Strength, precision, attention to detail; nothing was sacrificed. The RoadStar™ is refined simplicity at its finest.







**The LifeLED™ inside the RoadStar™ was designed to last well over 70,000 hours before needing to be replaced. /**

Compared with traditional HID sources, the RoadStar™'s optical system's lifespan is easily 3 to 7 times longer. Not having to constantly deploy the maintenance fleet to replace electrical components can save any city man-hours, fuel, and other various expenses that add up over time, and turns the RoadStar™ into a source of pride in any project. The durable IP66 sealed construction, excellent thermal management, and resistance to elements (-40°C/-40°F to 50°C/122°F), makes the RoadStar™ an extremely tough, lumen generating powerhouse that simply can't be outperformed.





>>  
LUMINAIRE > GPLM  
BRACKET > DC6-1A  
POLE > ATR85

>>  
LUMINAIRE > GPLS  
BRACKET > PC4-1A  
POLE > ATR74

# STAR™

## BENEFITS

- › Energy efficient LED light source with customizable light control
- › Perfect uniformity and intensity of light
- › Over 70,000 hours of optimal operational lifespan
- › Pole spacing up to 8 times its mounting height
- › Durable, low maintenance construction
- › Excellent thermal management and weather resistance
- › Roadway priced state-of-the-art technology

# SUPERIOR PERFORMANCE

Customize this luminaire with stunning precision to cast light only where you want light to be cast. It uses up to 50% less energy than traditional CobraHeads but 100% pure dark-sky compliant performance. The RoadStar™'s light engine generates light that is uniform in intensity, and Philips Lumec's patented light stretching technology inside the LifeLED™ engine provides the widest possible pole spacing for a luminaire of its kind.

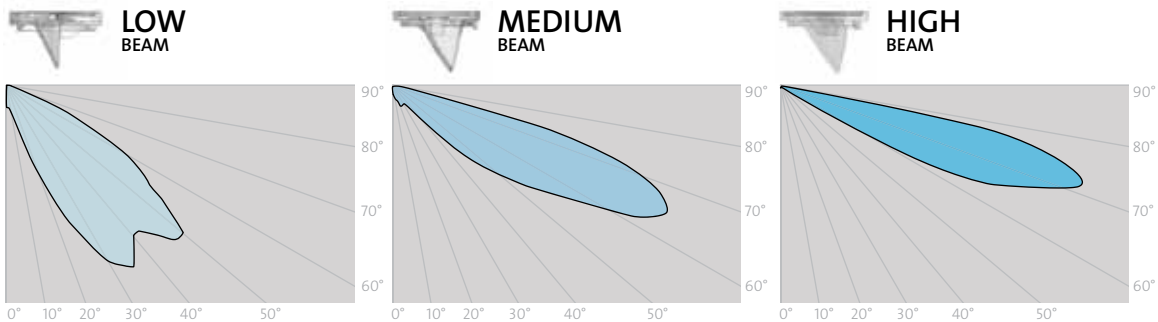


**Less luminaires are needed to achieve the same uniformity and intensity of light.**

The RoadStar™ incredible light control provides pole spacing up to 8 times its mounting height. This reduces the quantity of poles (thus luminaires) needed to illuminate any given project and allows any site to keep its existing infrastructure and simply upgrade its CobraHeads to the RoadStar™. To counter glare, the RoadStar™ provides unparalleled uniformity and intensity. This assures security on the road by not interfering with the vision of drivers, cyclists, and pedestrians.

# LIGHT CONTROL

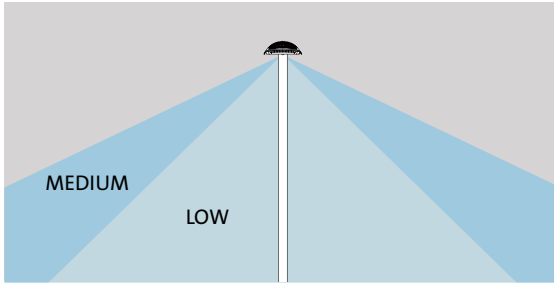
To obtain a better light control, the technology employs a mix of low beam, medium beam, and high beam lens control, generating more lumens in the target lighting zone, increasing pole spacing up to 8 times greater than the mounting height, and reducing glare.



**High beam, medium beam, and low beam light management gives the RoadStar™ better light control and better lumen targeting.**

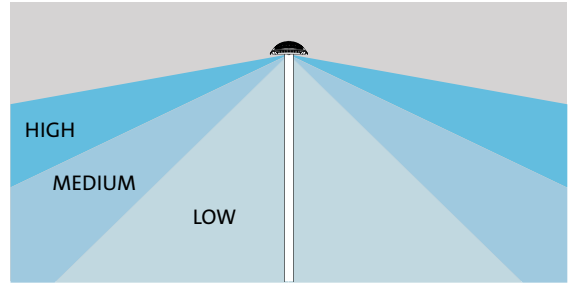
## EXAMPLES:

### LE2 FULL CUT-OFF OPTICAL SYSTEM



>> More lumens / Less glare

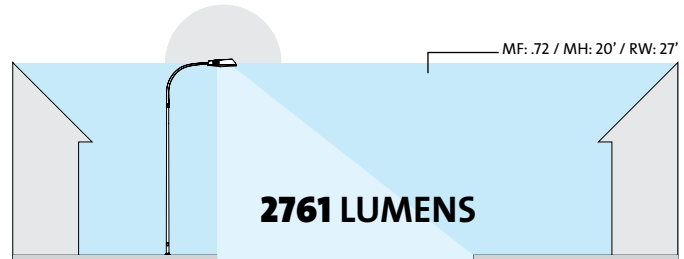
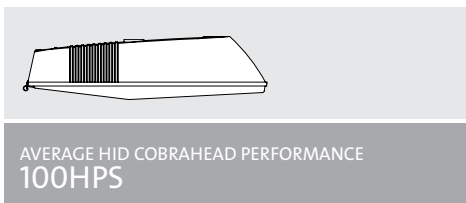
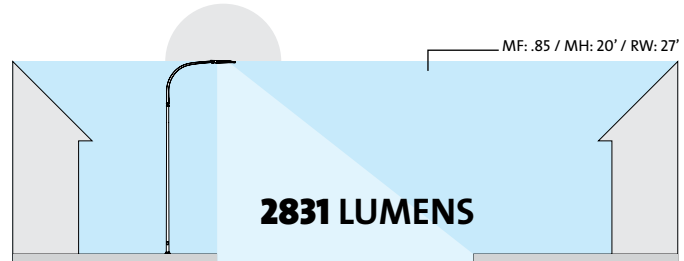
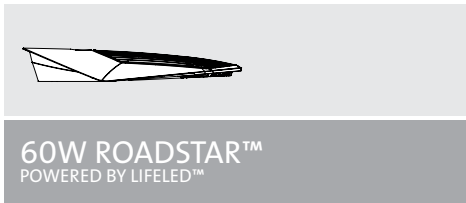
### LEH2 HYPER-EXTENSIVE OPTICAL SYSTEM



>> More lumens / Wider pole spacing

## TARGET LUMEN

The results of a controlled test comparing a typical 100HPS CobraHead with a 60W RoadStar™ clearly demonstrate the light control that is possible to achieve with this luminaire: same lumens in the target area using less power.



Same light levels for a fraction of the energy usage.

# LifeLED™ LIFESPAN

With a light source that lasts well over 70,000 hours (over 16 years) and with extremely low maintenance needs, the RoadStar™ will deliver whatever is required of it, while asking very little in return.

LM80 tests performed on the RoadStar™ clearly demonstrate that it not only meets criteria, it greatly surpasses them, giving it a lifespan that well exceeds the 70,000 hour mark thanks to better thermal management and lower current needs.

The lifespan of an LED luminaire is measured using lumen depreciation. When the LEDs in an LED light engine reach 30% lumen depreciation, they should be replaced. However, since the lumen depreciation in the LifeLED™ engine happens slower thanks to better thermal management (65°C), better junction temperature management (82°C), and lower current usage (570mA), when the RoadStar™ reaches 70,000 hours of use, its lumen depreciation will still be well under 30%.

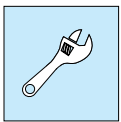
	Ambient at LED	Junction at LED	Current	Lifespan
LED MANUFACTURER LM80 REPORT	85°C	112°C	700mA	70000
ROADSTAR™ VALUES	65°C	82°C	570mA	+ 70000



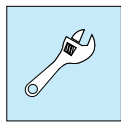
**Rigorous testing has proven that the advanced system configuration of the RoadStar™ assures over 70,000 hours of life.**

# VERSATILITY

With the RoadStar™, it is finally possible to replace existing CobraHeads without changing the parameters of an existing infrastructure. It comes in two sizes that adapt to any project or setting, from city roads and parking spaces to majestic parks, walkways, and waterfront paths. The RoadStar™ requires no special tooling, making it the perfect choice for Departments of Transportation, Utilities, and municipalities that want to take advantage of the simplest yet most efficient way to change their existing power hungry HID CobraHead lighting for the advantages of energy efficient LED lighting. With the RoadStar™, the possibilities are endless, the results are unique, and making the change is extremely simple.



**HID**



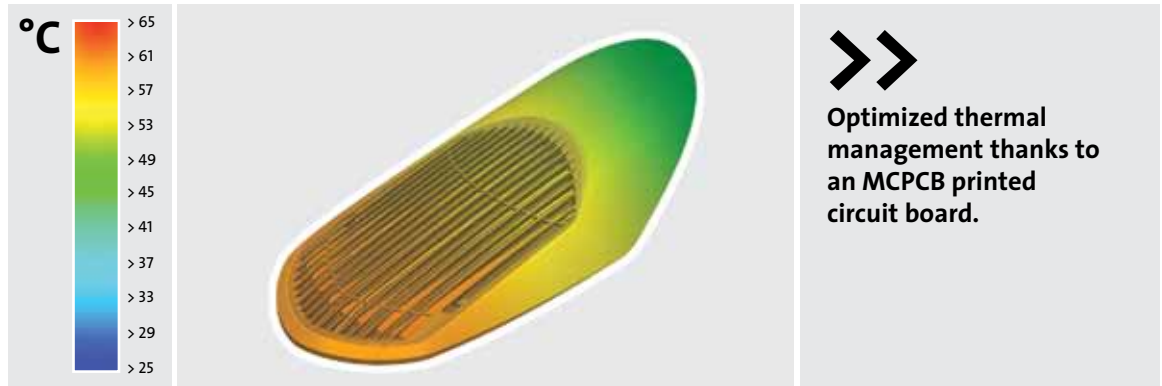
**LED**



**Easily replaces CobraHeads. No special tooling required. Keep your existing infrastructure.**

# RELIABILITY

The technology of the RoadStar™ can take anything the environment can throw at it, from extreme temperatures that range from -40°C/-40°F to 50°C/122°F, to intense weather conditions. The RoadStar™'s **IP66** sealed optics protect its light source, and its robust, **3G** (ANSI C136.31 Table 2—Vibration test levels—Bridge/overpass applications) vibration resistant construction protects the rest of this reliable lighting solution. Heat is managed through a built-in external heat-sink as well an **aluminium MCPCB printed circuit board**, far superior to the typical FR4 fibreglass boards, and considerably more recyclable.



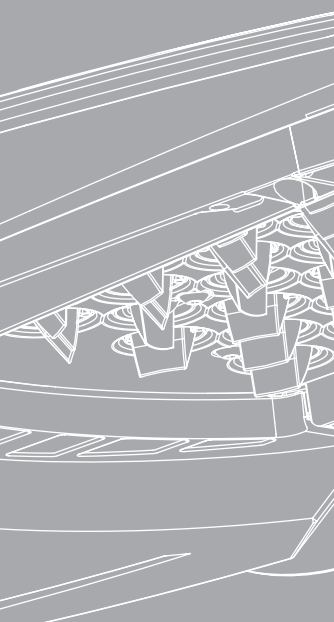
# WISE/SAFE INVESTMENT

The RoadStar™ is covered by a 5-year warranty from defects in material and workmanship in its intended use. The RoadStar™ is one of the most affordable state-of-the-art solution available on the market for cities, states, provinces, private projects, institutions and all other energy conscious entities.

**>>> 5 year warranty**



Service



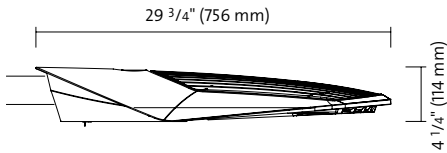
# TECHNICAL & ORDERING INFORMATION

## 3 ways to access information:

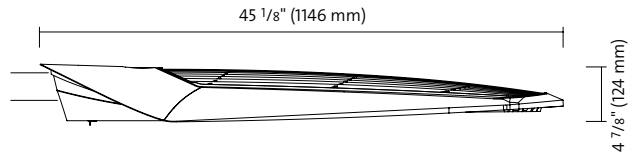
- 1 See next page for RoadStar™ technical information.
- 2 Consult **Lumec3D** via our Website at **www.lumec.com**. Lumec3D gives you the opportunity to build your luminaire in real-time as well as build, as you select your choices, your product code which will appear at the bottom of the screen.
- 3 See the Products section of our Website at **www.lumec.com**. Each Product page provides technical information and IES files, a selection of photos, and the promotional brochure.



# LUMINAIRES



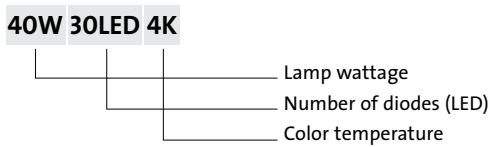
**GPLS**  
EPA: 0.76 sq. ft.  
Weight: 20 lb (9.1 kg)



**GPLM**  
EPA: 1.10 sq. ft.  
Weight: 31 lb (14.1 kg)

# LAMPS

## LAMP CODE DEFINITION / 40W 30LED 4K



## LED LAMP DETAILS /

LAMP	LUMINAIRES AVAILABILITY	RATED LIFE HRS. <sup>1</sup>	CRI	COLOR TEMPERATURE <sup>2</sup>	WATTAGE		LER
					LAMP	SYSTEM <sup>3</sup>	
40W30LED4K	GPLS	70,000	70	4000K	40W	45W	67
40W49LED4K	GPLS	70,000	70	4000K	42W	47W	74
60W30LED4K	GPLS	70,000	70	4000K	60W	68W	57
65W49LED4K	GPLS	70,000	70	4000K	65W	73W	65
90W49LED4K	GPLS	70,000	70	4000K	90W	102W	58
105W79LED4K	GPLM	70,000	70	4000K	105W	119W	62
130W98LED4K	GPLM	70,000	70	4000K	130W	147W	65
150W79LED4K	GPLM	70,000	70	4000K	150W	170W	56
180W98LED4K	GPLM	70,000	70	4000K	180W	204W	58

<sup>1</sup> Rated life represents the time it takes for the LED system to reach 70% of initial lumen output.

<sup>2</sup> On average.

<sup>3</sup> System wattage includes the lamp and the LED driver.

> Lamp lumen depreciation factor: **85%**


## CROSS REFERENCE ROADSTAR™ VS. COBRAHEAD LUMINAIRE

TYPICAL COBRAHEAD HID	ROADSTAR™ WATTAGE <sup>1</sup>	ENERGY SAVING
70HPS	60W30LED4K	24%
	40W49LED4K	47%
100HPS	65W49LED4K	43%
	90W49LED4K	21%
150HPS	105W79LED4K	36%
	130W98LED4K	21%
250HPS	180W98LED4K	35%
70MH	40W30LED4K	49%
	60W30LED4K	24%
100MH	40W49LED4K	62%
	65W49LED4K	41%
150MH	105W79LED4K	35%
	160W79LED4K	8%
250MH	150W79LED4K	42%
	180W98LED4K	30%

<sup>1</sup> This chart covers roadway lighting only.

➤➤ A photometric calculation is required in order to establish exactly which RoadStar™ wattage will replace the initial HID wattage.

## OPTICAL SYSTEMS

OPTICAL SYSTEMS		DISTRIBUTION
 FULL CUT-OFF	HYPER-EXTENSIVE	
<b>LE2</b>	<b>LEH2</b>	<b>TYPE II / Asymmetrical distribution</b>
<b>LE3</b>	<b>LEH3</b>	<b>TYPE III / Asymmetrical distribution</b>
<b>LE4</b>	<b>LEH4</b>	<b>TYPE IV / Asymmetrical distribution</b>
<b>LE5</b>	<b>LEH5</b>	<b>TYPE V / Symmetrical distribution</b>

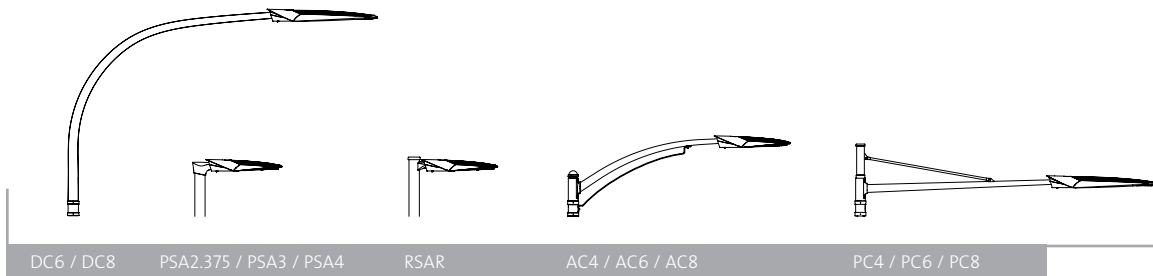
VOLTAGES / 120 / 208 / 240 / 277

# LUMINAIRE OPTIONS

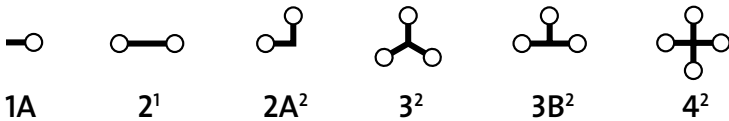
- > **PH8** Photoelectric Cell, Twistlock Type c/w receptacle
- > **RC** Receptacle for a twist-lock photoelectric cell or a shorting cap
- > **WPG** Without protective grid
- > **BL** Bubble level
- > **DMG** 0-10 volt dimming-ready power supply

# BRACKETS

Consult the Philips Lumec Pole Guide for details and the complete line of brackets.



# CONFIGURATION

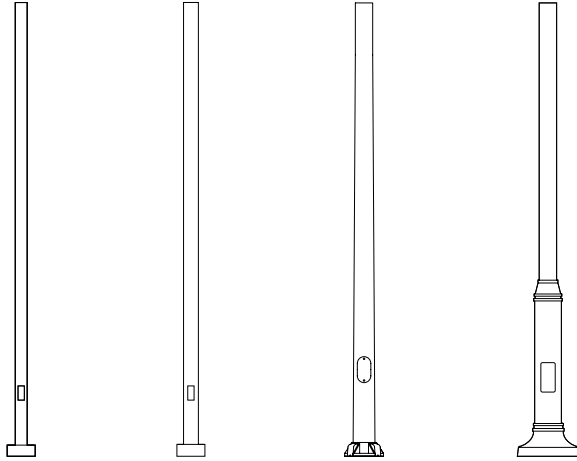


<sup>1</sup> Not available with PSA2.375 / PSA3 / PSA4 brackets.

<sup>2</sup> Only available with RSAR bracket.

# POLES

Consult the Philips Lumec Pole Guide for details and the complete line of poles.



APR4 / SPR4

APR5 / SPR5

ATR74 / ATR85

SAM8 / SSM8

# FINISH

The RoadStar™ comes standard in **Natural Alumimun (NP)**.  
Also available unpainted (NF).

Consult Lumec's Color Chart for complete specifications.



# INNOVATION & EXPERTISE

**The very definition of our purpose.** / We are experts at what we do and we are passionate about doing it. Engineers, designers, technicians, specialists, over 250 dedicated people all focused on one thing: creating the best outdoor lighting products the world has ever seen. We don't simply manufacture luminaires, we design them and their optics from scratch, we have our own foundry, we do our own R&D, we lead the way in LED outdoor lighting technology, we are actively involved in the industry, always staying on top, always leading the way. Philips Lumec is not only a manufacturer of luminaires, we are innovators and creators in our field, delivering high-quality products, perfectly adapted to the needs of our clients.



# LIGHTING THE WAY TO A NEW WORLD

**Since 1972, Philips Lumec has been committed to anticipating and satisfying the lighting needs of highly specialized industries. /**

Our focus is on developing solutions that respond to those needs. This visionary approach has made Philips Lumec one of the most respected partners in outdoor lighting in North America. We do our own R&D and we manufacture our products in-house, this assures that each Philips Lumec luminaire is built to the highest standards using only the best technology and methods. We dynamically practice the arts of sustainable design and the science of smart engineering in order to provide our clients with the best lighting products in world. Philips Lumec actively forges partnerships within the industry in order to engineer lighting solutions that are flexible, environmentally responsible, adaptable, and truly inspired.

Philips Lumec's history is rich and its influence on the outdoor lighting market is considerable. The employees at Philips Lumec are proud to be associated with the world leader in lighting. Philips provides Lumec with a leading position in the Canadian decorative and functional outdoor lighting market, offering both contemporary and traditional luminaires, as well as a major role in the United States. Our products can be found everywhere around the globe, as shown by our varied projects in Asia, Mexico and the Caribbean.

**>> [www.lumec.com](http://www.lumec.com)**



[www.lumec.com](http://www.lumec.com)

**LUMEC HEAD OFFICE**

640, Curé-Boivin Boulevard  
Boisbriand, Québec  
Canada J7G 2A7

**T :** 450.430.7040  
**F :** 450.430.1453

**ONTARIO OFFICE**

189 Bullock Drive  
Markham, Ontario  
Canada L3P 1W4

**T :** 416.223.7255  
**F :** 866.971.2825

**MEXICO OFFICE**

Insurgentes Sur 512  
Col. Roma Sur  
Mexico, D.F. 06700

**T :** (5255) 5564.5242  
**F :** 450.971.2816

For the details of our different agents and representatives, please consult the **Contact us** section of our Website.

© 2009 Philips Group.

All rights reserved. Certain products illustrated in this catalog may be protected by applicable patents and patents pending. Philips Lumec will aggressively defend all of its intellectual property. We reserve the right to change details of design, materials and finishes.



/ Some luminaires use fluorescent or high intensity discharge (HID) lamps that contain small amounts of mercury. Such lamps are labeled "Contains Mercury" and/or with the symbol "Hg." Lamps that contain mercury must be disposed of in accordance with local requirements. Information regarding lamp recycling and disposal can be found at [www.lamprecycle.org](http://www.lamprecycle.org)



The management at Philips Lumec has taken an official position towards sustainable development and has signed a publicly available document to ensure that all its activities tend towards that goal. Guided by our corporate philosophies, Philips Lumec engages itself to elaborate innovative and bold initiatives that will take advantage of our teamwork so that together we all adopt a responsible behaviour towards society and the environment.

The choice to use 100% recycled paper for this brochure is an example of the actions that Philips Lumec has undertaken in the scope of its dedication towards sustainable development. Using this paper reduced our ecological footprint of:

 3 trees

 87 kg solids waste

 8 201 L water

 190 kg atmospheric emissions

