



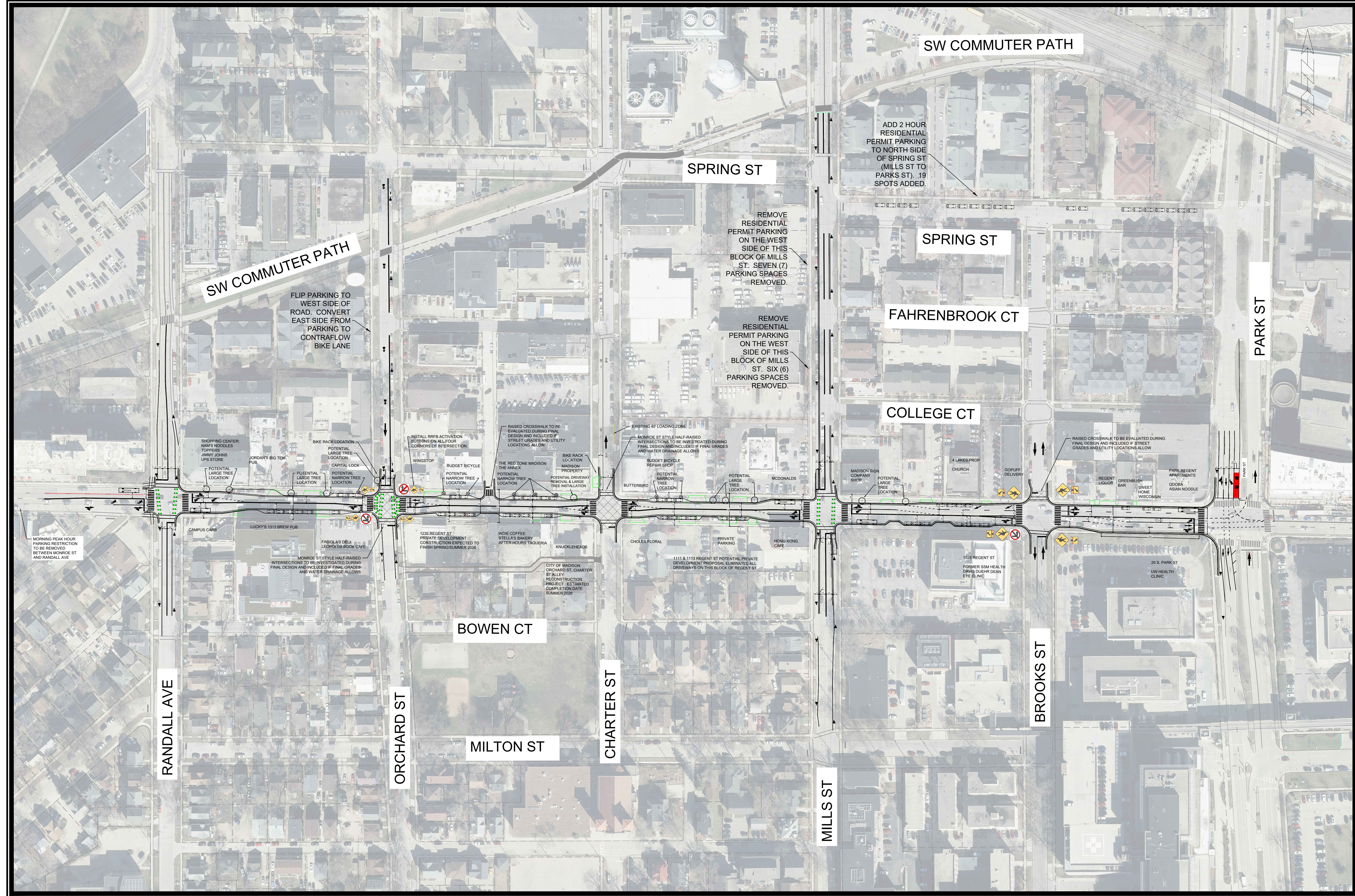
MARK	REVISION	DATE	BY
TE	Designed By: LMC	Date: 5/19/2026 12:25 PM	Scale: Custom
TE			OV

TE
MADISON, WI
CONTRACT NO.: TE

RANDALL ST TO PARK ST - OVERVIEW
REGENT ST - GEOMETRICS
M:\DESIGN\Projects\15233\CAD\Traffic\15233TE-Geometrics EB LT at Park.dwg



TE
OVERVIEW



SW COMMUTER PATH

FLIP PARKING TO WEST SIDE OF ROAD. CONVERT EAST SIDE FROM PARKING TO CONTRAFLOW BIKE LANE

MORNING PEAK HOUR PARKING RESTRICTION TO BE REMOVED BETWEEN MONROE ST AND RANDALL AVE

SHOPPING CENTER
NAM'S NOODLES
TOPPERS
JUNKY JOHN'S
UPS STORE
JORDAN'S BIG TEN PUB
POTENTIAL LARGE TREE LOCATION
BIKE RACK LOCATION
POTENTIAL NARROW TREE LOCATION
CAPITAL LOCK

INSTALL RRFB ACTIVATION BUTTONS ON ALL FOUR CORNERS OF INTERSECTION
WINGSTOP
BUDGET BICYCLE
POTENTIAL NARROW TREE LOCATION

RAISED CROSSWALK TO BE EVALUATED DURING FINAL DESIGN AND INCLUDED IF STREET GRADES AND UTILITY LOCATIONS ALLOW
THE RED ZONE MADISON THE ANNEX
POTENTIAL NARROW TREE LOCATION
BIKE RACK LOCATION
MADISON PROPERTY
POTENTIAL DRIVEWAY REMOVAL & LARGE TREE INSTALLATION

EXISTING 40' LOADING ZONE
MONROE ST STYLE HALF-RAISED INTERSECTIONS TO BE INDICATED DURING FINAL DESIGN AND INCLUDED IF FINAL GRADES AND WATER DRAINAGE ALLOWS
BUDGET BICYCLE REPAIR SHOP
BUTTERBIRD
POTENTIAL NARROW TREE LOCATION
POTENTIAL LARGE TREE LOCATION
MCDONALDS

REMOVE RESIDENTIAL PERMIT PARKING ON THE WEST SIDE OF THIS BLOCK OF MILLS ST. SEVEN (7) PARKING SPACES REMOVED.

REMOVE RESIDENTIAL PERMIT PARKING ON THE WEST SIDE OF THIS BLOCK OF MILLS ST. SIX (6) PARKING SPACES REMOVED.

ADD 2 HOUR RESIDENTIAL PERMIT PARKING TO NORTH SIDE OF SPRING ST (MILLS ST TO PARKS ST). 19 SPOTS ADDED.

SW COMMUTER PATH

SPRING ST

SPRING ST

FAHRENBROOK CT

COLLEGE CT

PARK ST

RAISED CROSSWALK TO BE EVALUATED DURING FINAL DESIGN AND INCLUDED IF STREET GRADES AND UTILITY LOCATIONS ALLOW
REGENT LIQUOR
GREENBUSH BAR
SWEET HOME WISCONSIN
PARK REGENT APARTMENTS
OOBA ASIAN NOODLE

RANDALL AVE

ORCHARD ST

BOWEN CT

MILTON ST

CHARTER ST

MILLS ST

BROOKS ST

TE	REVISION	DATE	BY
TE	Designed By: LMC	Date: 5/19/2026 12:25 PM	Scale: Custom
TE	MARK		OV

TE
MADISON, WI
TE
CONTRACT NO.:

RANDALL ST TO PARK ST - OVERVIEW
REGENT ST - GEOMETRICS
M:\DESIGN\Projects\15233\CAD\Traffic\15233TE-Geometrics EB LT at Park.dwg



TE
OVERVIEW

