

# Comprehensive Design Review of Signage (CDR)

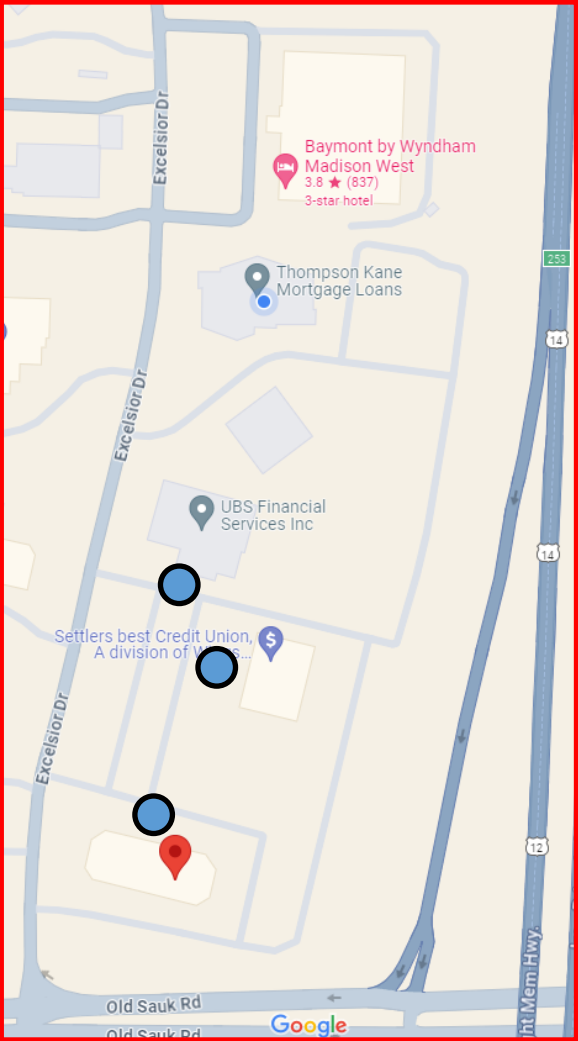
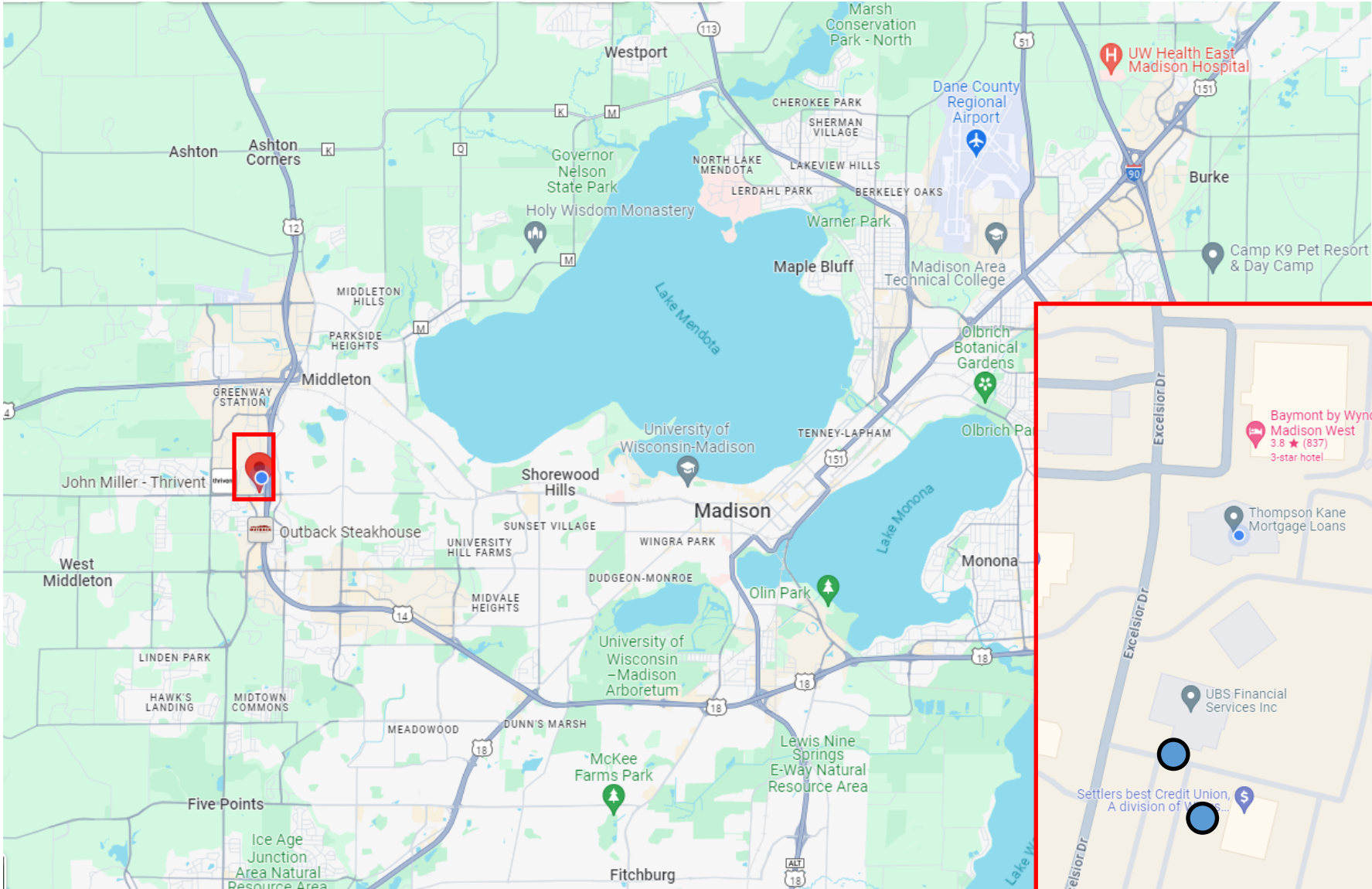
8000, 8010, 8020, 8030, 8040, & 8102 Excelsior Drive

Located within Old Sauk Trails Park on Excelsior Drive north of Old Sauk Road

Need for CDR arises from need to repair/replace existing ground signs in front of three properties (8000, 8010, & 8020 Excelsior Drive)

Applicant is The Gialamas Company, Inc. with assistance from Grant Signs

We are seeking final approval of this CDR



Locator Map

8000, 8010, 8020 Excelsior Drive Sign Replacement Project

Madison, WI





8000 Excelsior Drive | Madison | WI 53717





8010 Excelsior Drive | Madison | WI 53717

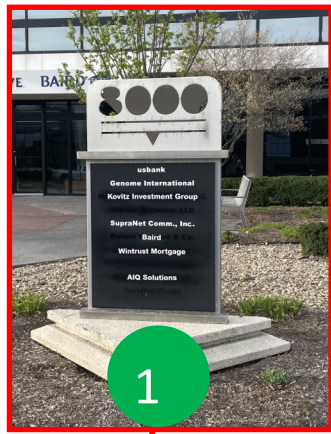




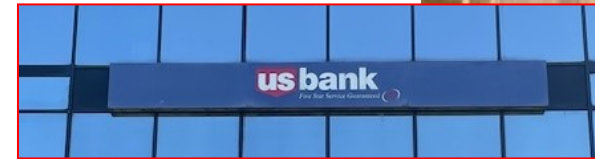
8020 Excelsior Drive | Madison | WI 53717



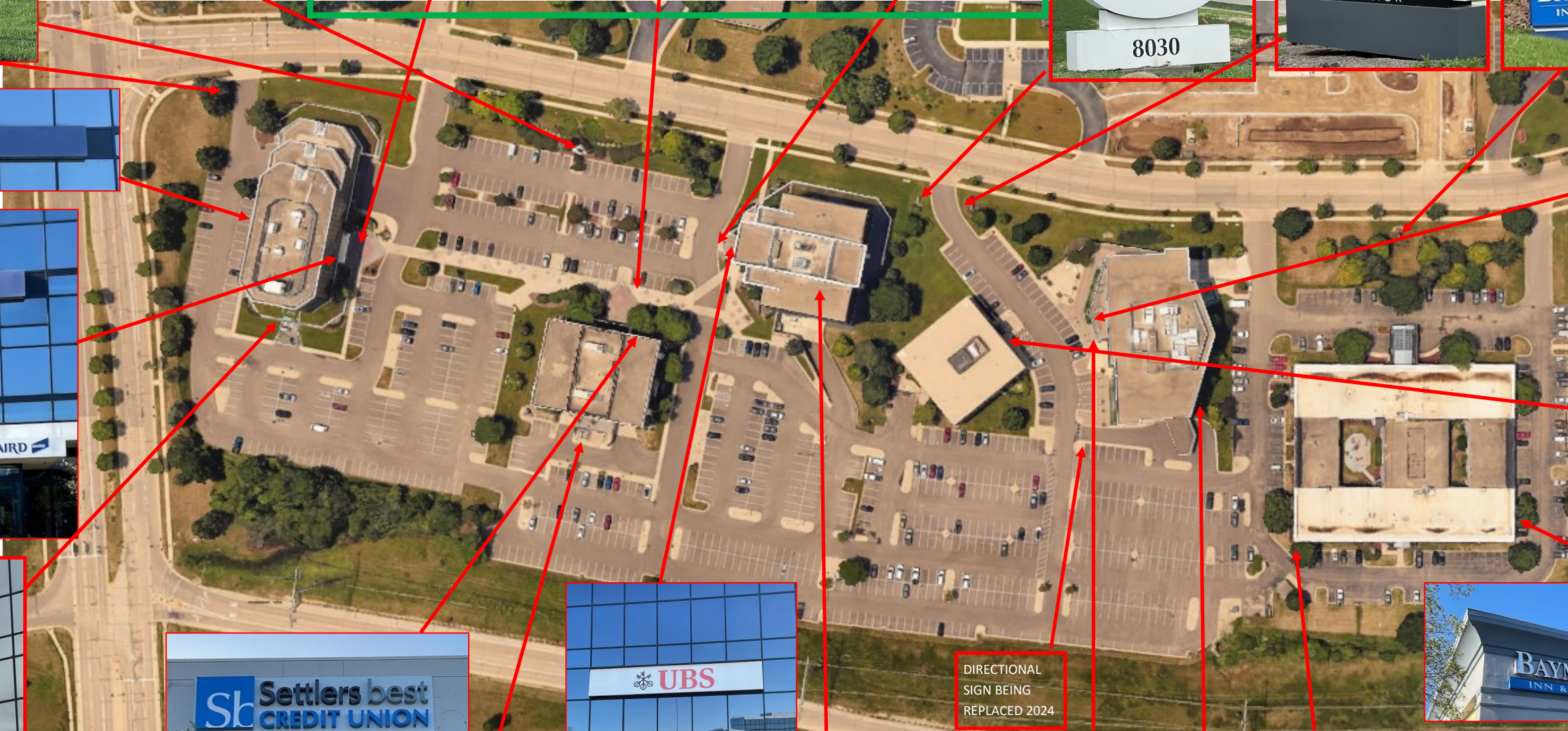
8000, 8010, 8020, 8030, 8040 & 8102 Excelsior Drive  
Madison | WI | 53717  
**SIGN PLAN**  
April 19, 2024  
Reflecting Current Signs and Three (3) Signs to be replaced



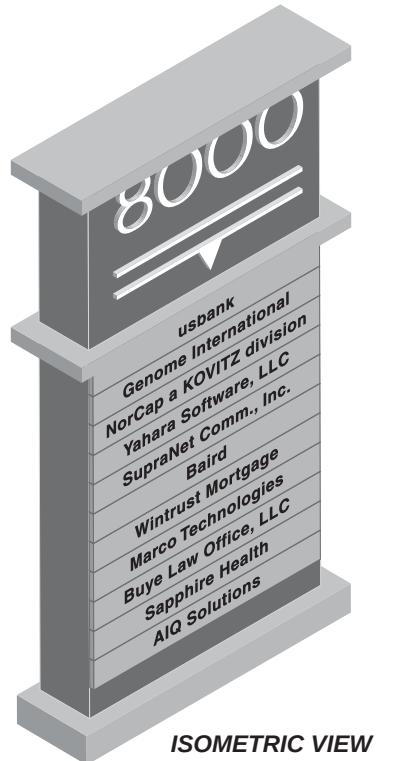
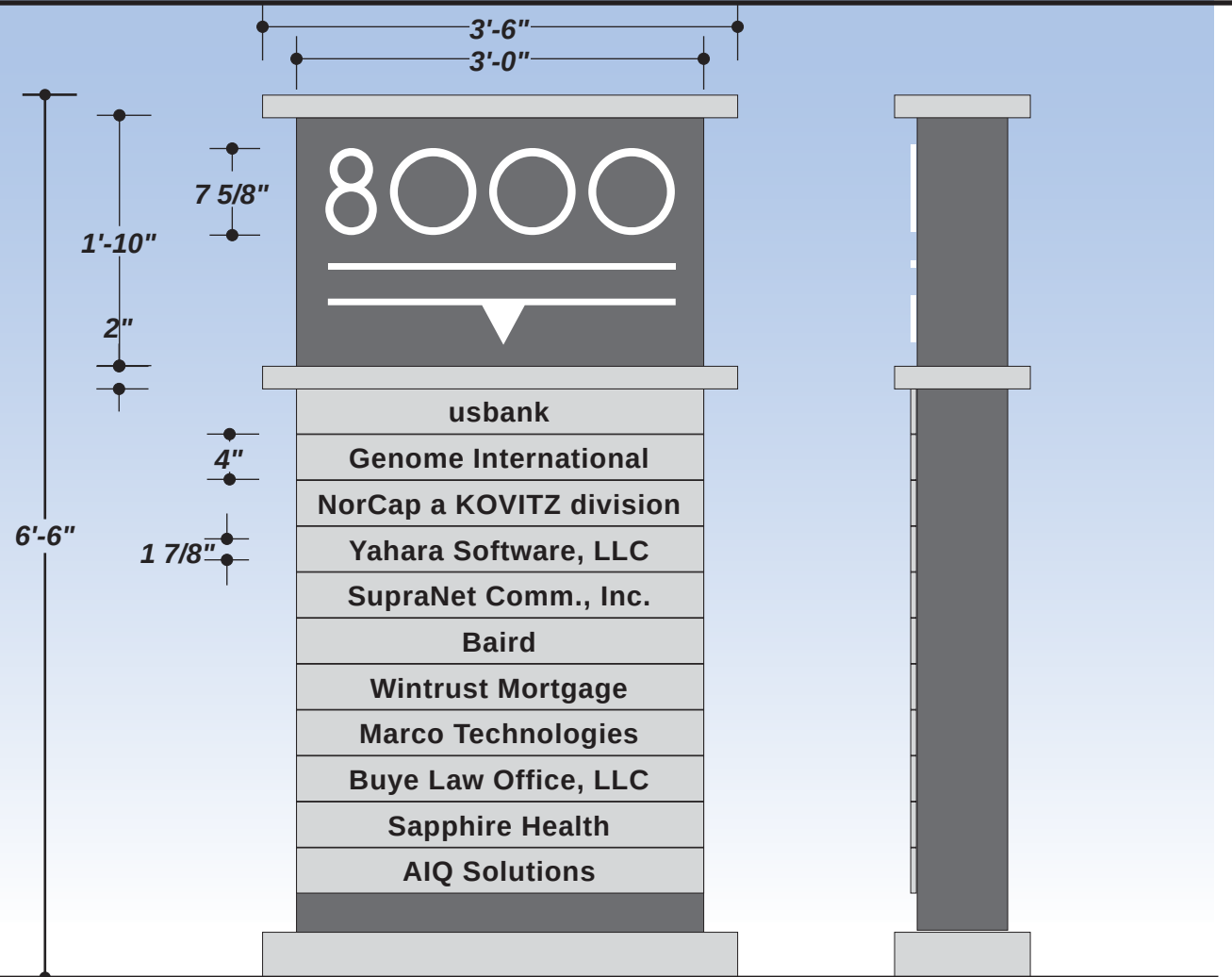
Pedestrian Signs



DIRECTIONAL SIGN BEING REPLACED 2024







1

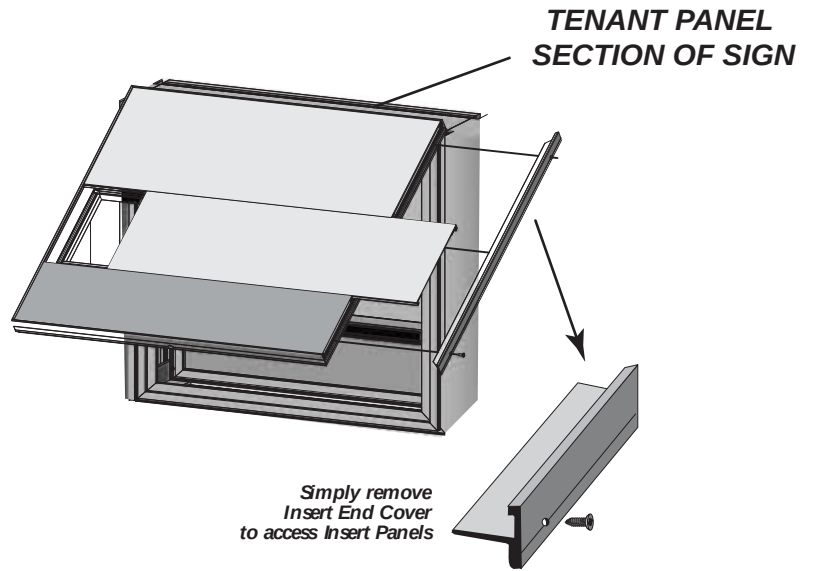
ISOMETRIC VIEW



EXISTING SIGNAGE



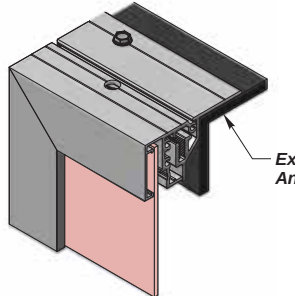
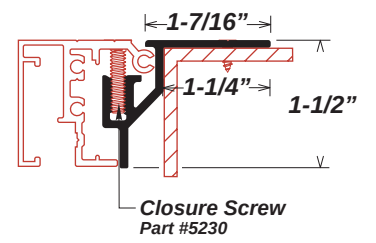
SIMULATED NIGHT VIEW



TENANT PANEL SECTION OF SIGN

Simply remove Insert End Cover to access Insert Panels

**Series 7-12 Retro Body**  
Part #1600  
(Section view through side/bottom)



Existing Structure, Angle or Tubing

- 7725-41 DARK GRAY (PAINT / VINYL)
- 7725-11 PEARL GRAY (PAINT)
- WHITE (PAINT)

**JOB DESCRIPTION**  
S/F, NON-ILLUMINATED GROUND SIGN

**CABINET**  
- SERIES 7/12 RETRO BODY (PART #1600) SECURED TO ALUMINUM CABINET FRAME  
- CONFIGURED TO ALLOW FOR 4" TALL INSERT PANELS

**INSERT PANELS**  
- 4" TALL  
- REMOVABLE  
- RECTANGLE ROUTED OUT & BACKED W/ ACRYLIC  
- REVERSE-CUT VINYL APPLIED FIS ON ACRYLIC

**"8000" & HORIZONTAL RULES W/ TRIANGLE**  
- ROUTED OUT OF ALUMINUM FACE  
- WHITE ACRYLIC PUSH-THROUGHS (1/2" PROTRUDING)

**INSTALL**

- R1: 06.09.22 • CS • CHANGED "8000" FONT & ADDED HORIZONTAL LINES & TRIANGLE
- R2: 05.17.23 • CS • CHANGED "8000" TO BE ILLUMINATED
- R3: 06.07.23 • CS • UPDATES PER CUSTOMER FEEDBACK

FILE NAME: 60254-01-3 DATE: 06.07.22 SCALE: 3/4" = 1'-0"  
 FILE TYPE:  OUT  PROD  OTHER  
 JOB NAME: GIALAMAS - 8000 EXCELSIOR DR.  
 LOCATION: 8000 EXCELSIOR DR. MADISON, WI  
 DRAWN BY: CS SALESMAN: DAN PIETRZYKOWSKI

DESIGN APPROVED BY: \_\_\_\_\_  
 AUTHORIZED SIGNATURE: \_\_\_\_\_  
 DATE: \_\_\_\_\_

TOTAL SQ. FT. OF SIGNAGE: 00.00 ft<sup>2</sup>

UNLESS OTHERWISE SPECIFIED:  
 • ALL FLUORESCENT LAMPS WILL BE T12-CW-HO LAMPS. • ALL BALLASTS WILL BE COLD START ALL-WEATHER BALLASTS. • ALL NEON TRANSFORMERS WILL BE 30 MILLIAMPS. • 120V PRIMARY POWER TO SIGNS WILL BE BY OTHERS. • ALL DATA LINES TO ELECTRONIC SIGNAGE WILL BE BY OTHERS. • ALL PAINT COLORS WILL BE SEMI-GLOSS FINISH.

THIS IS AN ORIGINAL COMPUTER GENERATED COLOR PRINT. COLORS REPRESENTED ON THIS PRINT MAY NOT MATCH THE PMS CHIP, VINYL OR PAINT COLORS EXACTLY. IT IS TO BE VIEWED AS A REPRESENTATION ONLY. ALL SIZES AND SHAPES DEPICTED ARE REPRESENTATIONAL AND MAY VARY FROM FINAL PRODUCT. THEY ARE ONLY FOR THE CUSTOMERS USE IN CONNECTION WITH A PROPOSED PROJECT. ARTWORK AND PRINTED MATERIAL ARE NOT TO BE USED BY ANYONE OUTSIDE OF YOUR ORGANIZATION, NOR IS IT TO BE REPRODUCED, COPIED OR EXHIBITED IN ANY FORM

WWW.GRANTSIGNS.NET

2810 SYENE RD - MADISON, WI 53713

608.838.7794

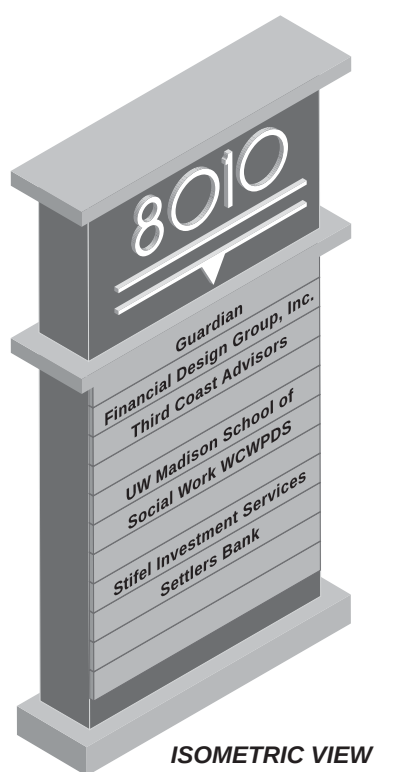
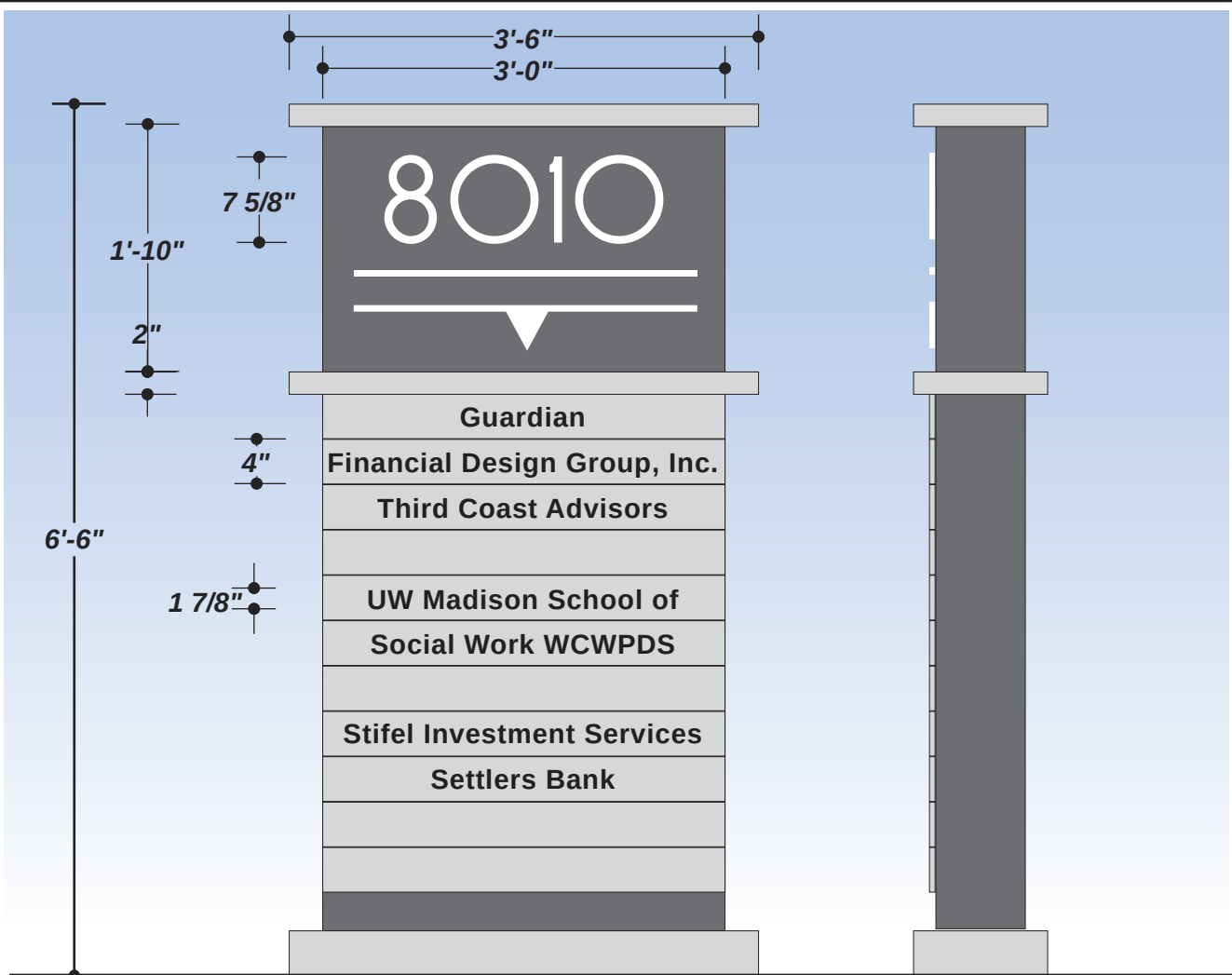


**GRANT SIGNS**  
DP INDUSTRIES, LLC

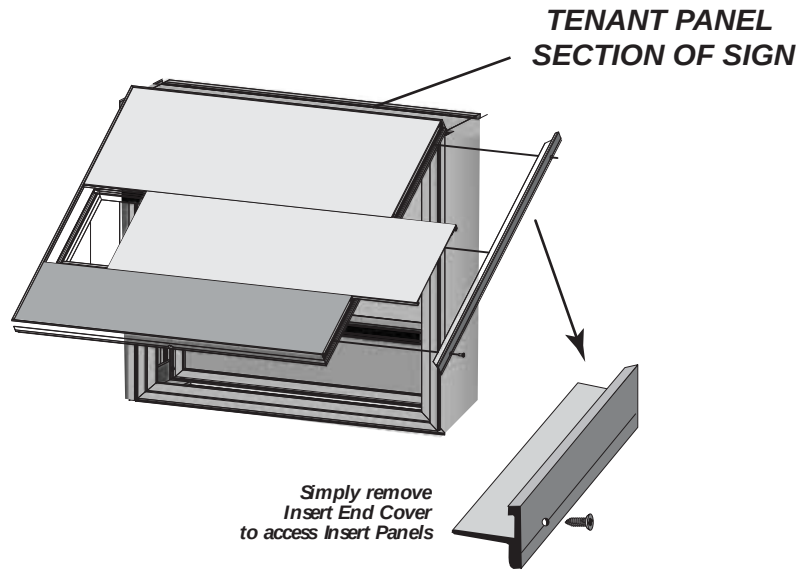
608.838.7794

IF THIS PRINTS ONTO ARTWORK PAGE THE FILE HAS BEEN SIZED TO FIT PAPER AND WILL NOT BE TO SCALE - UNCHECK THE FIT TO PAGE BOX IN ADOBE ACROBAT TO PRINT A SCALE PRINT

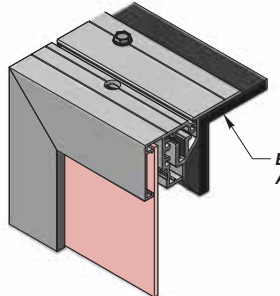
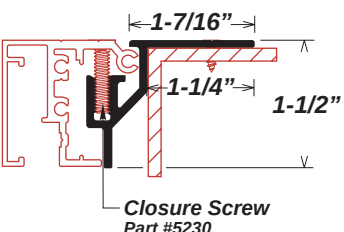
IF THIS PRINTS ONTO ARTWORK PAGE THE FILE HAS BEEN SIZED TO FIT PAPER AND WILL NOT BE TO SCALE - UNCHECK THE FIT TO PAGE BOX IN ADOBE ACROBAT TO PRINT A SCALE PRINT



2



**Series 7-12 Retro Body  
Part #1600**  
(Section view through side/bottom)



- 7725-12 BLACK (PAINT)
- 7725-41 DARK GRAY (PAINT)
- 7725-11 PEARL GRAY (PAINT)

**JOB DESCRIPTION**

S/F, LED-ILLUMINATED GROUND SIGN W/ NON-ILLUMINATED TENANT PANELS

**LED-ILLUMINATED TOP CABINET**  
 - "8000" & HORIZONTAL RULES W/ TRIANGLE  
 - ROUTED OUT OF ALUMINUM FACE  
 - WHITE ACRYLIC PUSH-THROUGHS (1/2" PROTRUDING)

**NON-ILLUMINATED PANEL CABINET**  
 - SERIES 7/12 RETRO BODY (PART #1600) SECURED TO ALUMINUM CABINET FRAME  
 - CONFIGURED TO ALLOW FOR 4" TALL INSERT PANELS

**INSERT PANELS**  
 - 4" TALL  
 - REMOVABLE  
 - VINYL APPLIED

**INSTALL**

**TOTAL SQ. FT. OF SIGNAGE: 00.00 ft<sup>2</sup>**

UNLESS OTHERWISE SPECIFIED:  
120V PRIMARY POWER TO SIGNS WILL BE BY OTHERS. ALL DATA LINES TO ELECTRONIC SIGNAGE WILL BE BY OTHERS. ALL PAINT COLORS WILL BE SEMI-GLOSS FINISH

THIS IS AN ORIGINAL GENERATED COLOR PRINT. COLORS REPRESENTED ON THIS PRINT MAY NOT MATCH THE PMS CHIP, VINYL OR PAINT COLORS EXACTLY. IT IS TO BE VIEWED AS REPRESENTATION ONLY ALL SIZES, SHAPES AND COLORS DEPICTED ARE REPRESENTATIONAL AND MAY VARY FROM FINAL PRODUCT. THEY ARE ONLY FOR THE CUSTOMERS USE IN CONNECTION WITH A PROPOSED PROJECT. ARTWORK AND PRINTED MATERIAL ARE NOT TO BE USED BY ANYONE OUTSIDE OF YOUR ORGANIZATION, NOR IS IT TO BE REPRODUCED, COPIED OR EXHIBITED IN ANY FORM.

FILE NAME: 60667-01-0 DATE: 06.07.23 SCALE: 3/4" = 1'-0"

FILE TYPE:  OUT  PROD  OTHER

JOB NAME: GIALAMAS COMPANY

LOCATION: 8010 EXCELSIOR DRIVE MADISON, WI

DRAWN BY: CS SALESMAN: DAN PIETRZYKOWSKI

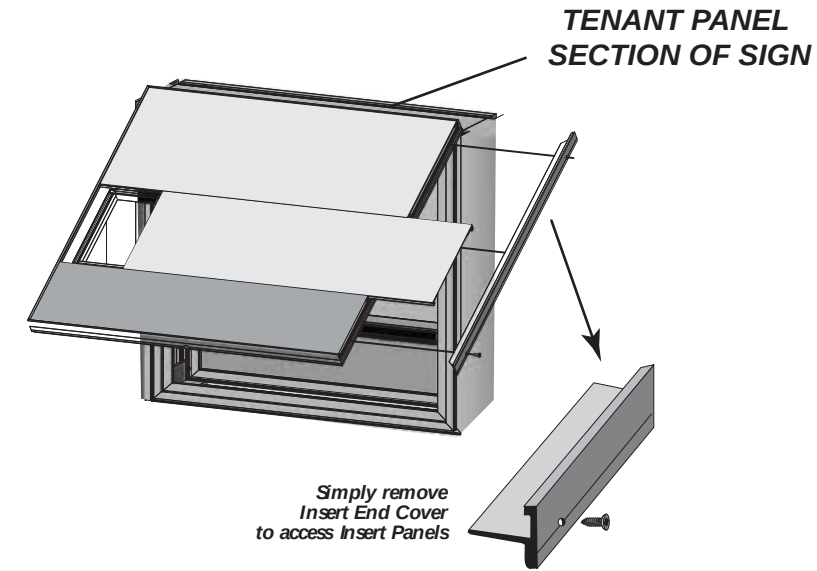
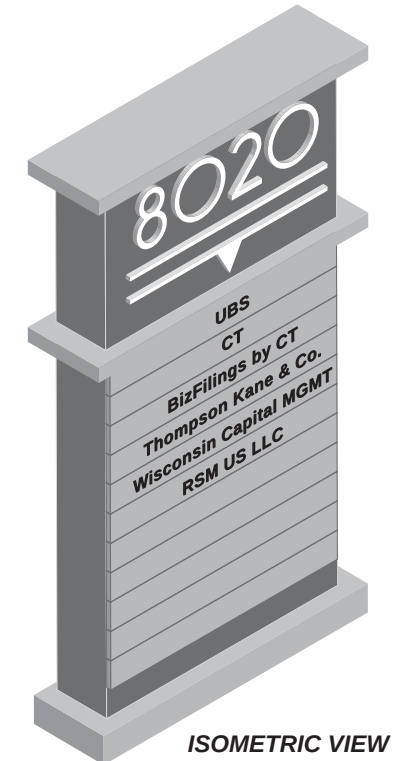
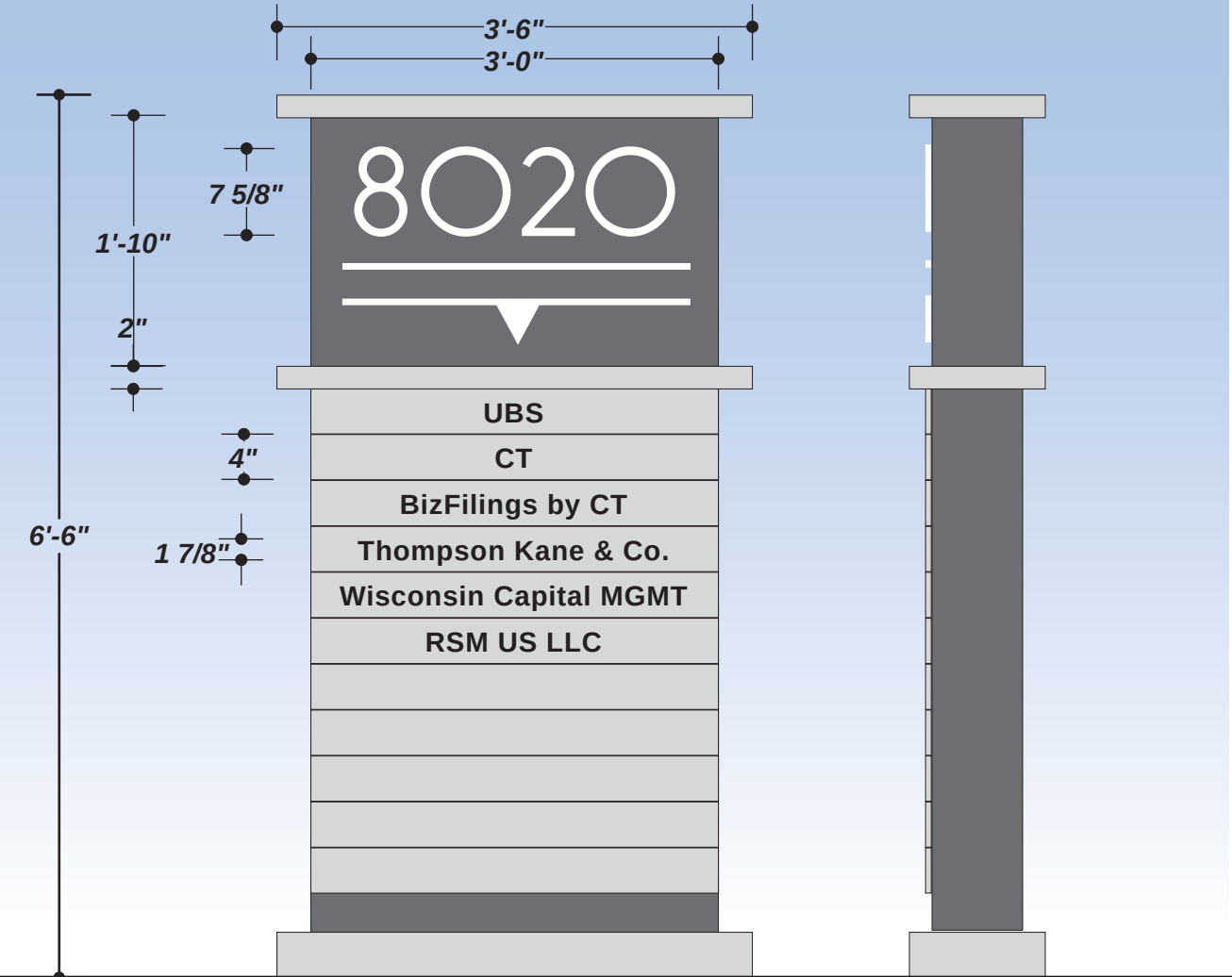
DESIGN APPROVED BY: \_\_\_\_\_

AUTHORIZED SIGNATURE: \_\_\_\_\_

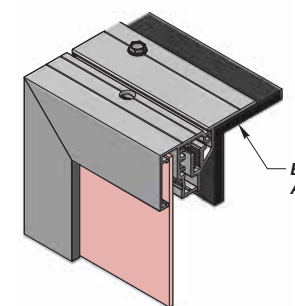
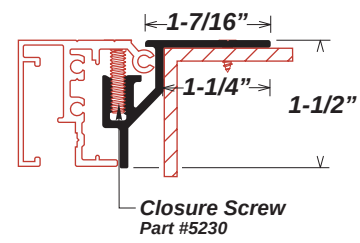
DATE: \_\_\_\_\_







Series 7-12 Retro Body  
Part #1600  
(Section view through side/bottom)



- 7725-12 BLACK (PAINT)
- 7725-41 DARK GRAY (PAINT)
- 7725-11 PEARL GRAY (PAINT)

**JOB DESCRIPTION**

S/F, LED-ILLUMINATED GROUND SIGN W/  
NON-ILLUMINATED TENANT PANELS

LED-ILLUMINATED TOP CABINET  
- "8000" & HORIZONTAL RULES W/ TRIANGLE  
- ROUTED OUT OF ALUMINUM FACE  
- WHITE ACRYLIC PUSH-THROUGHS (1/2" PROTRUDING)

NON-ILLUMINATED PANEL CABINET  
- SERIES 7/12 RETRO BODY (PART #1600) SECURED TO ALUMINUM CABINET FRAME  
- CONFIGURED TO ALLOW FOR 4" TALL INSERT PANELS

INSERT PANELS  
- 4" TALL  
- REMOVABLE  
- VINYL APPLIED

INSTALL

TOTAL SQ. FT. OF SIGNAGE: 00.00 ft<sup>2</sup>

UNLESS OTHERWISE SPECIFIED: 120V PRIMARY POWER TO SIGNS WILL BE BY OTHERS. ALL DATA LINES TO ELECTRONIC SIGNAGE WILL BE BY OTHERS. ALL PAINT COLORS WILL BE SEMI-GLOSS FINISH

THIS IS AN ORIGINAL GENERATED COLOR PRINT. COLORS REPRESENTED ON THIS PRINT MAY NOT MATCH THE PMS CHIP, VINYL OR PAINT COLORS EXACTLY. IT IS TO BE VIEWED AS REPRESENTATION ONLY ALL SIZES, SHAPES AND COLORS DEPICTED ARE REPRESENTATIONAL AND MAY VARY FROM FINAL PRODUCT. THEY ARE ONLY FOR THE CUSTOMERS USE IN CONNECTION WITH A PROPOSED PROJECT. ARTWORK AND PRINTED MATERIAL ARE NOT TO BE USED BY ANYONE OUTSIDE OF YOUR ORGANIZATION, NOR IS IT TO BE REPRODUCED, COPIED OR EXHIBITED IN ANY FORM.

FILE NAME: 60668-01-0 DATE: 06.07.23 SCALE: 3/4" = 1'-0"  
 FILE TYPE:  OUT  PROD  OTHER  
 JOB NAME: GIALAMAS COMPANY  
 LOCATION: 8020 EXCELSIOR DRIVE MADISON, WI  
 DRAWN BY: CS SALESMAN: DAN PIETRZYKOWSKI

DESIGN APPROVED BY:  
 AUTHORIZED SIGNATURE \_\_\_\_\_  
 DATE \_\_\_\_\_



608.838.7794

