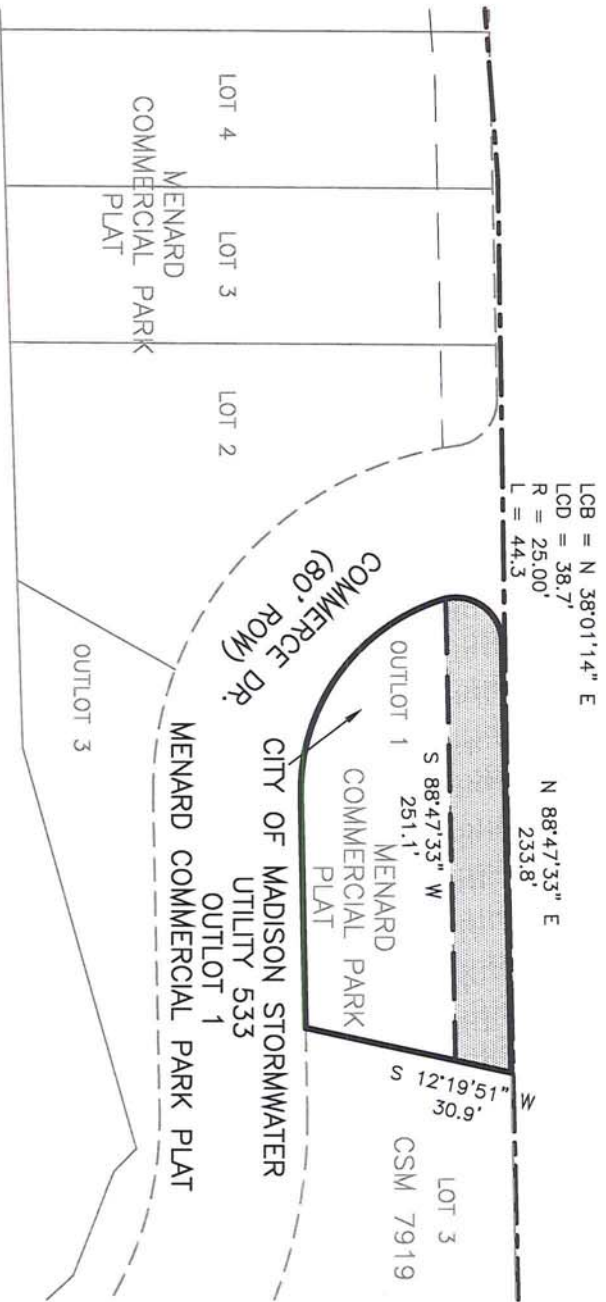


EASEMENT DESCRIPTION MAP (EXHIBIT A)

GRANTEE: AMERICAN TRANSMISSION COMPANY, LLC
 W234 W2000 RIDGEVIEW PKWY. CT.
 WAUKESHA, WI 53188

GRANTOR: CITY OF MADISON STORMWATER UTILITY 533
 210 MARTIN LUTHER KING JR BLVD, RM 115
 MADISON, WI 53703
 PIN 251/0708-271-0201-6

MINERAL POINT ROAD (ROW VARIES)



- LEGEND
- TRANSMISSION RIGHT OF WAY LINE
 - TRANSMISSION CENTERLINE
 - SECTION LINE AND ONE-QUARTER SECTION LINE
 - QUARTER-QUARTER SECTION LINE
 - PROPERTY LINE
 - ROAD RIGHT OF WAY LINE
 - SECTION CORNER MONUMENT



THIS DOCUMENT IS FOR THE USE OF AMERICAN TRANSMISSION COMPANY AND ITS AFFILIATES. IT IS NOT TO BE REPRODUCED OR TRANSMITTED IN ANY FORM OR BY ANY MEANS, ELECTRONIC OR MECHANICAL, INCLUDING PHOTOCOPYING, RECORDING, OR BY ANY INFORMATION STORAGE AND RETRIEVAL SYSTEM, WITHOUT THE WRITTEN PERMISSION OF AMERICAN TRANSMISSION COMPANY. AMERICAN TRANSMISSION COMPANY IS AT THEIR OWN RISK.

SPATIAL DATA SURVEYS, LLC



580 ARTHUR STREET
 VERONA, WI 53593
 (608)-845-2048

REVISIONS

NOTE: BEARINGS FOR THIS MAP ARE BASED ON THE WISCONSIN STATE PLANE COORDINATE SYSTEM, NAD83 (2007).
 © AMERICAN TRANSMISSION COMPANY 2012

Drawn: JDP

Date: 12/28/2012

Scale: 1" = 100'

SHEET NUMBER 1 OF 2