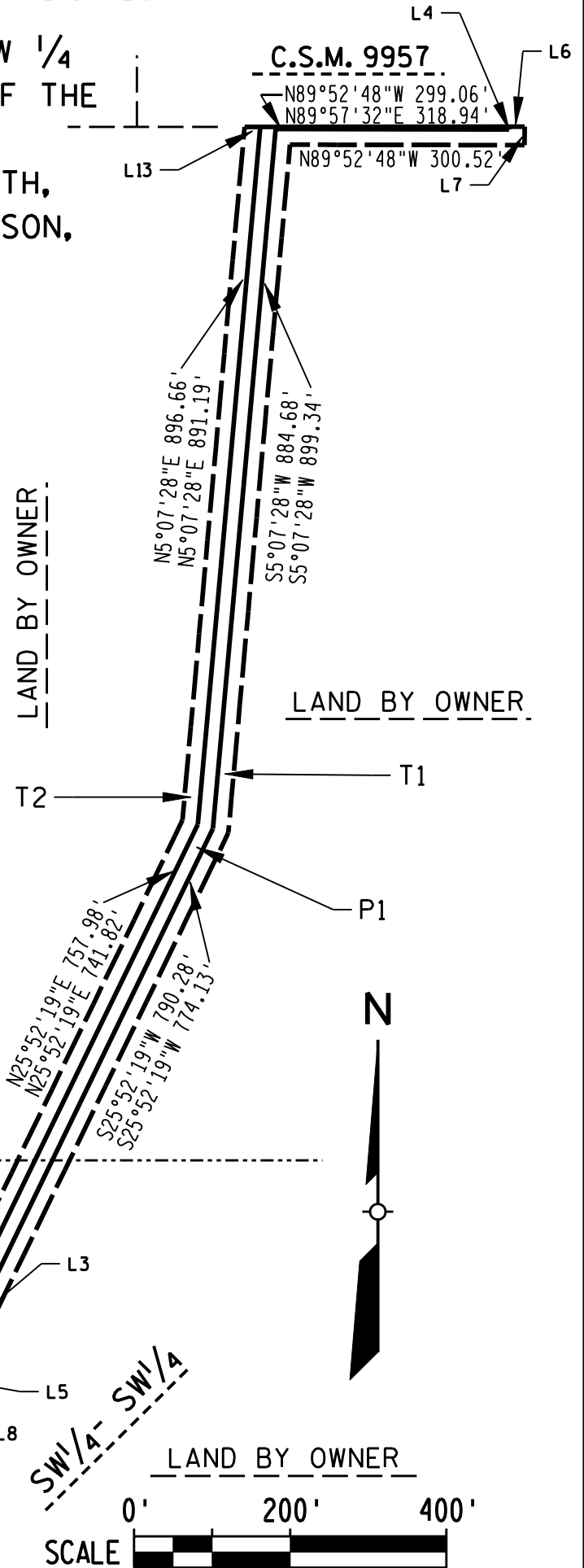
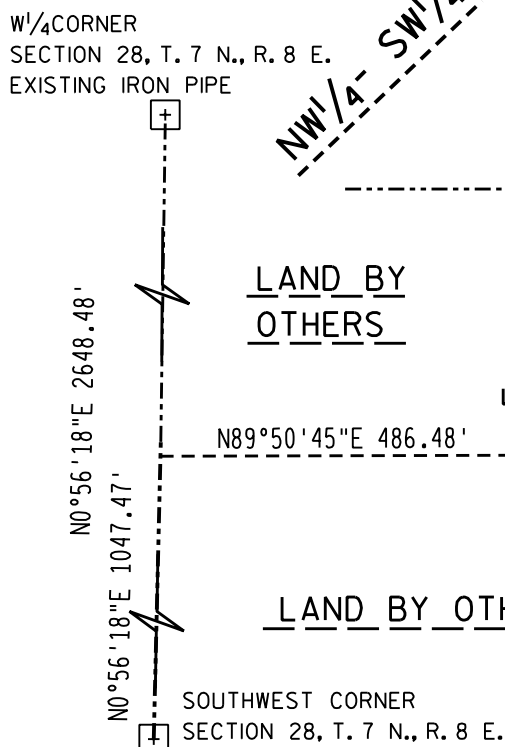


# EXHIBIT S3-16

LOCATED IN PART OF THE SW 1/4  
 OF THE SW 1/4 AND PART OF THE  
 NW 1/4 OF THE SW 1/4,  
 SECTION 28, TOWNSHIP 7 NORTH,  
 RANGE 8 EAST, CITY OF MADISON,  
 DANE COUNTY, WISCONSIN

### LINE TABLE

No.	Direction	Distance
L1	N 0°55'20" E	5.00'
L2	N 0°55'20" E	20.00'
L3	N 89°50'45" E	14.60'
L4	S 0°44'44" W	3.62'
L5	S 89°50'45" W	27.46'
L6	N 89°57'32" E	20.00'
L7	S 0°44'44" W	23.68'
L8	S 89°50'45" W	40.33'
L9	N 0°55'20" E	20.00'
L10	N 0°55'20" E	25.00'
L11	N 0°55'20" E	20.00'
L12	N 89°50'45" E	1.88'
L13	N 89°57'32" E	20.08'



P1=PERMANENT SEWER EASEMENT  
 T1/T2=TEMPORARY SEWER CONSTRUCTION EASEMENT

THIS INSTRUMENT WAS  
 DRAFTED BY EARTH TECH  
 EARTH TECH, INC.  
 MADISON, WI.  
 EARTH TECH PROJECT NO. 84025

SHEET OF

OWNER:  
 PELLETT DEVELOPMENT LLC  
 702 SOUTH POINT RD.  
 VERONA, WI. 53593