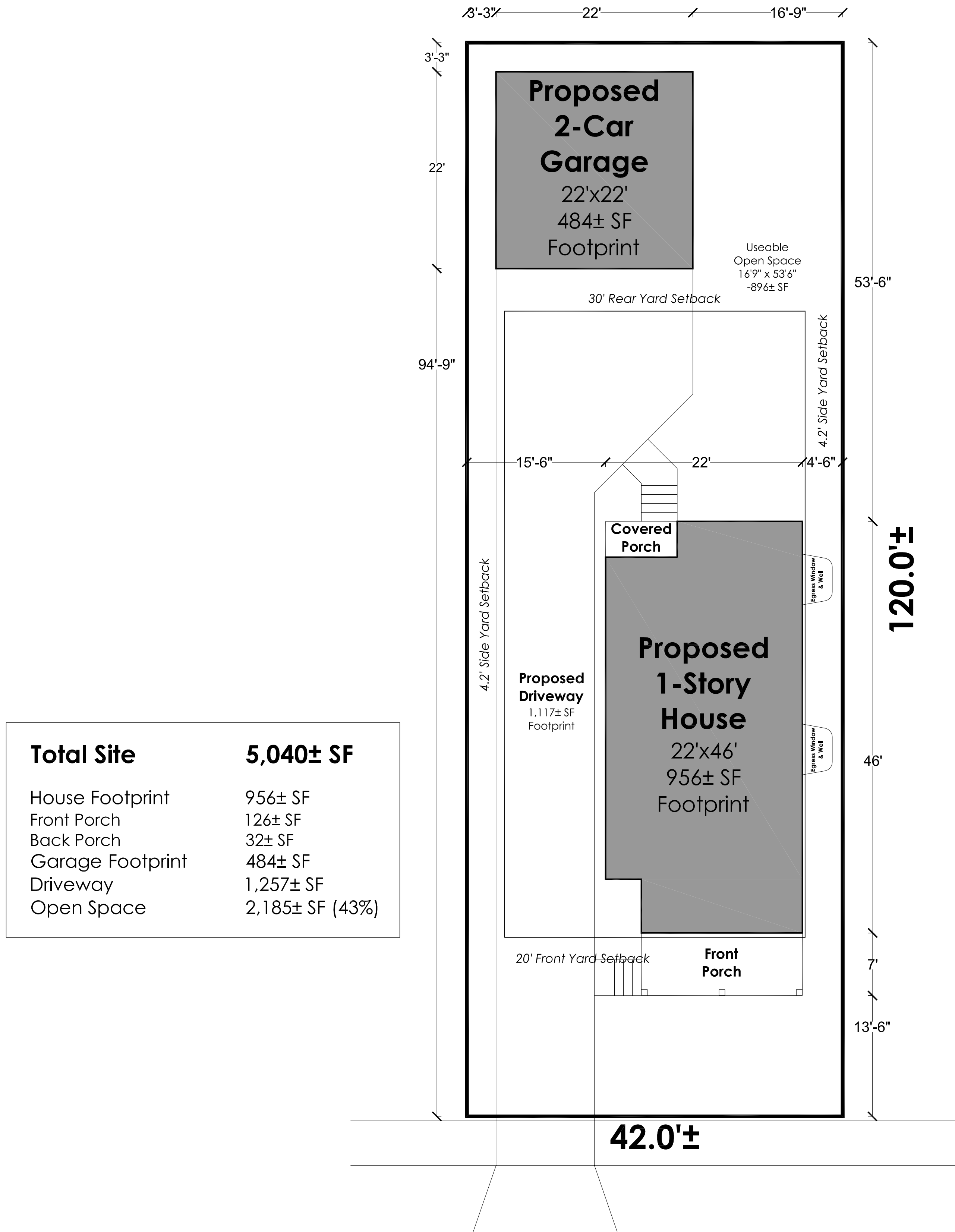
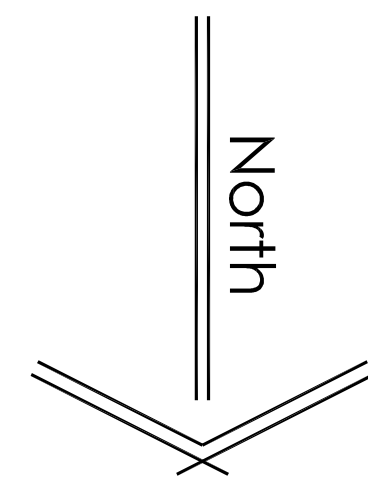


**Preliminary  
Working  
Drawings**



<b>Total Site</b>	<b>5,040± SF</b>
House Footprint	956± SF
Front Porch	126± SF
Back Porch	32± SF
Garage Footprint	484± SF
Driveway	1,257± SF
Open Space	2,185± SF (43%)

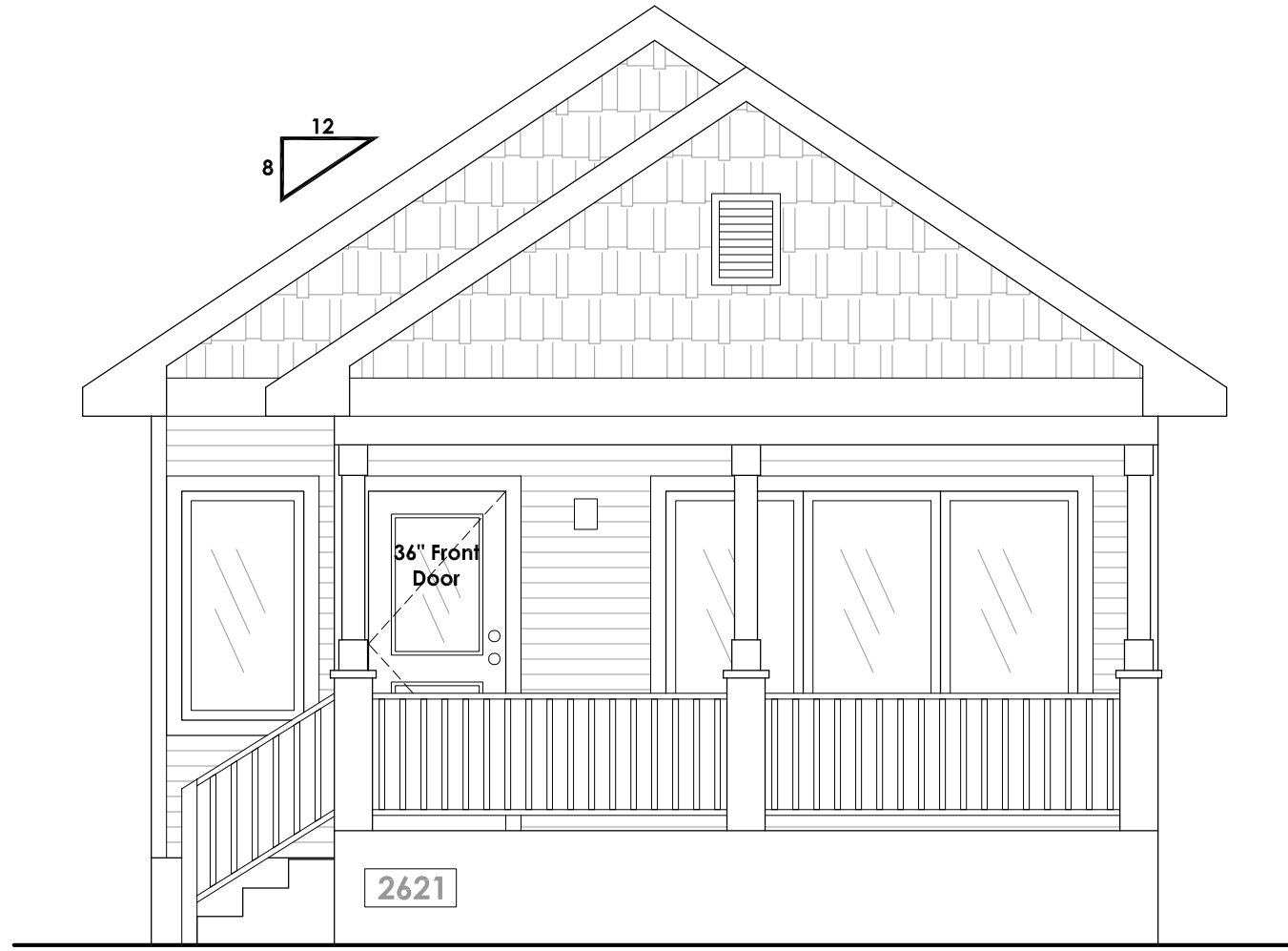
**2621 Moland Street**  
60' Public Right-of-Way



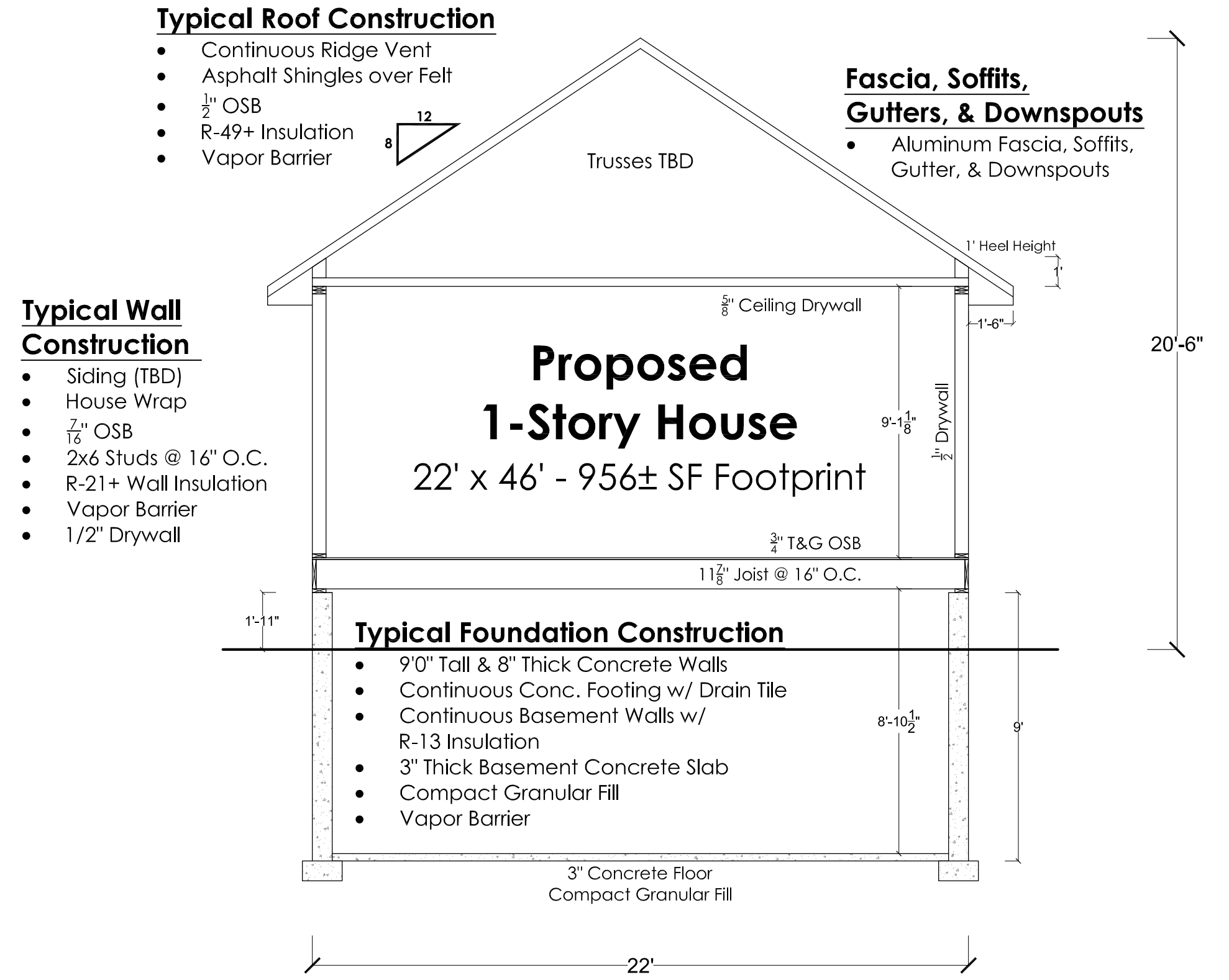
City of Madison  
TR-C4, 5,800± SF  
Michael Weber  
251/0810-314-1813-1  
(Eken Park, Block 2, Lot 6)

**SITE PLAN**

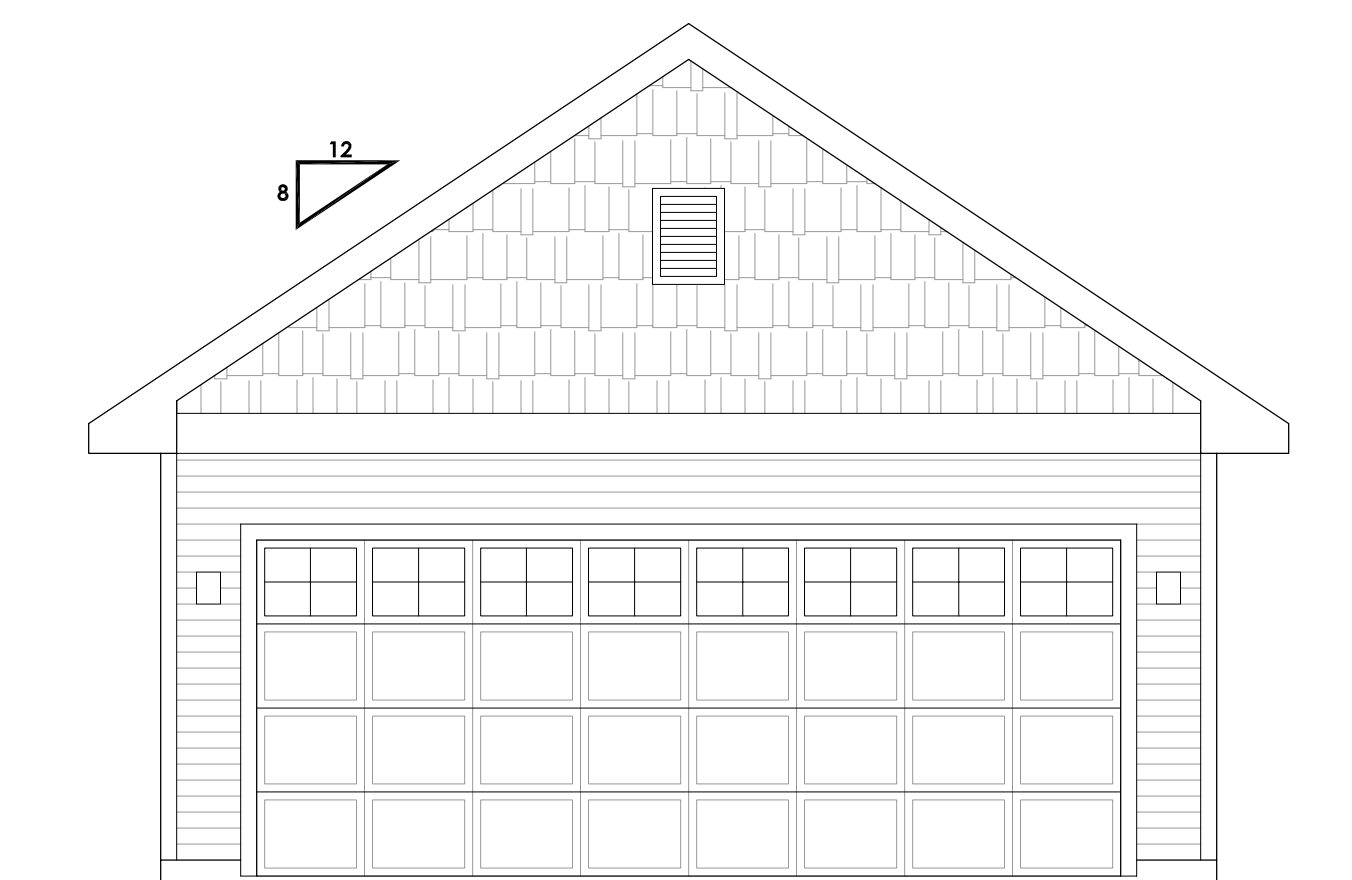
**Preliminary  
Working  
Drawings**



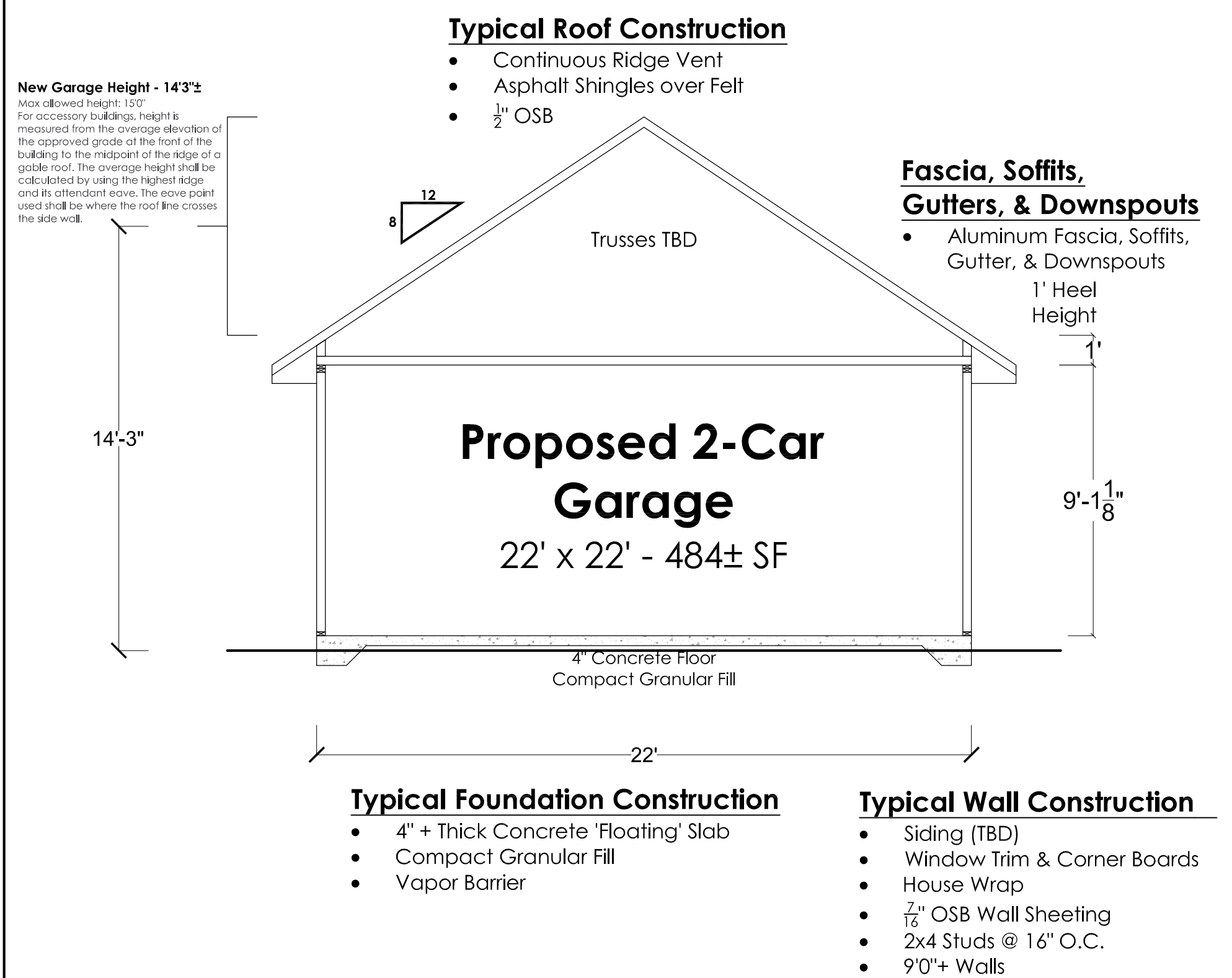
**HOUSE FRONT ELEVATION**



**TYPICAL HOUSE SECTION**

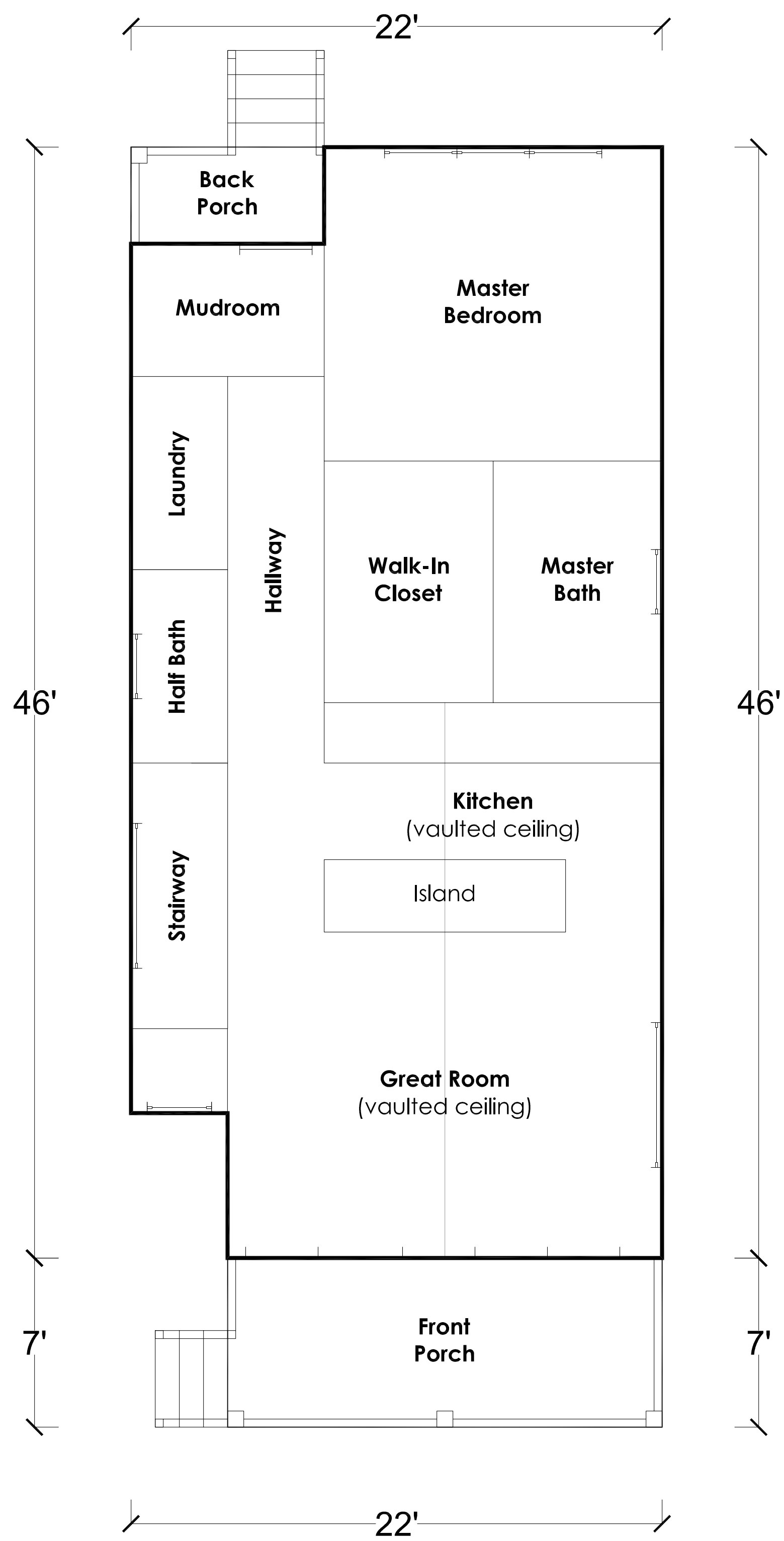


**GARAGE FRONT ELEVATION**



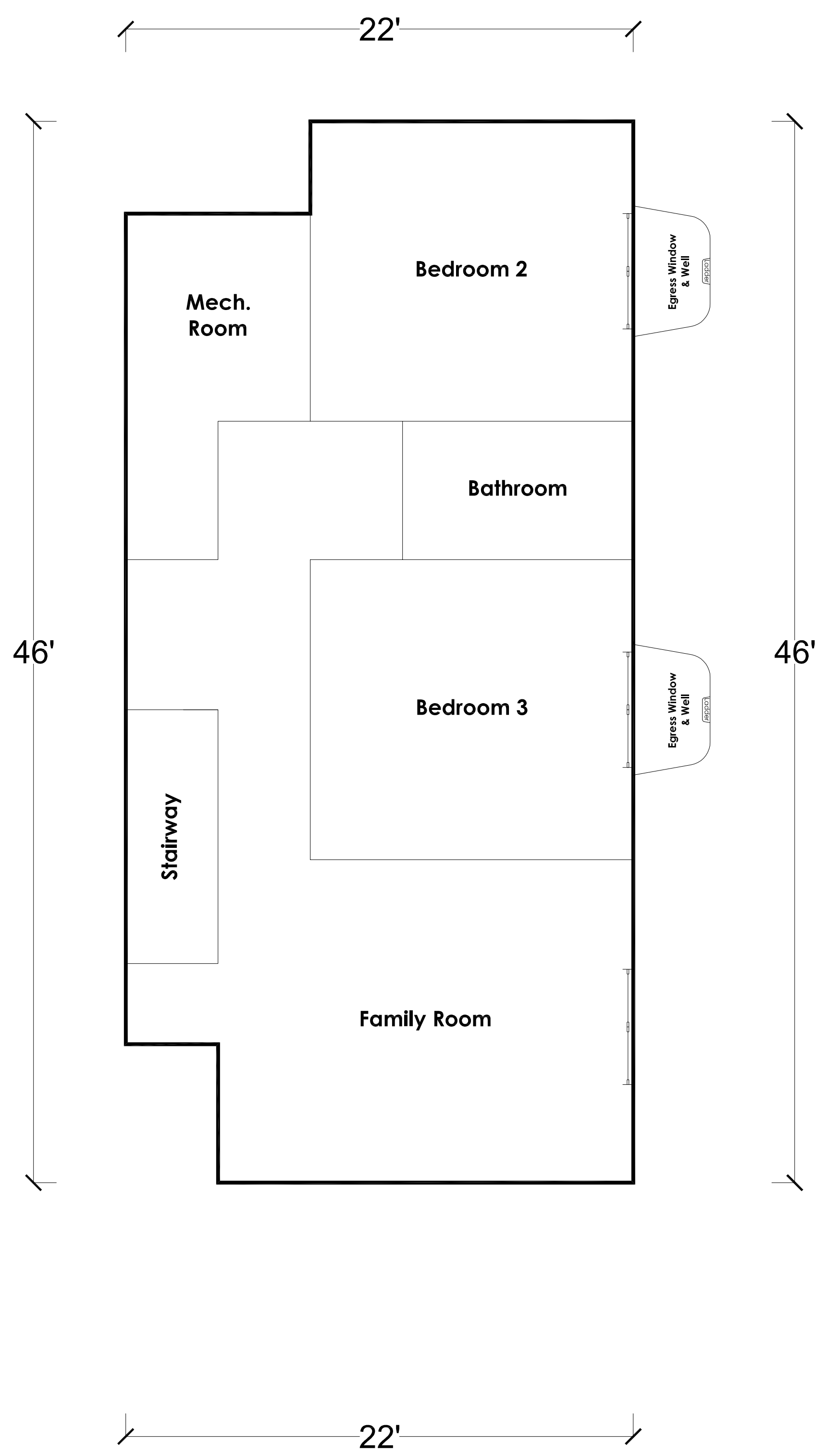
**GARAGE SECTION**

**Preliminary  
Working  
Drawings**



## MAIN FLOOR PLAN CONCEPT

956 square feet

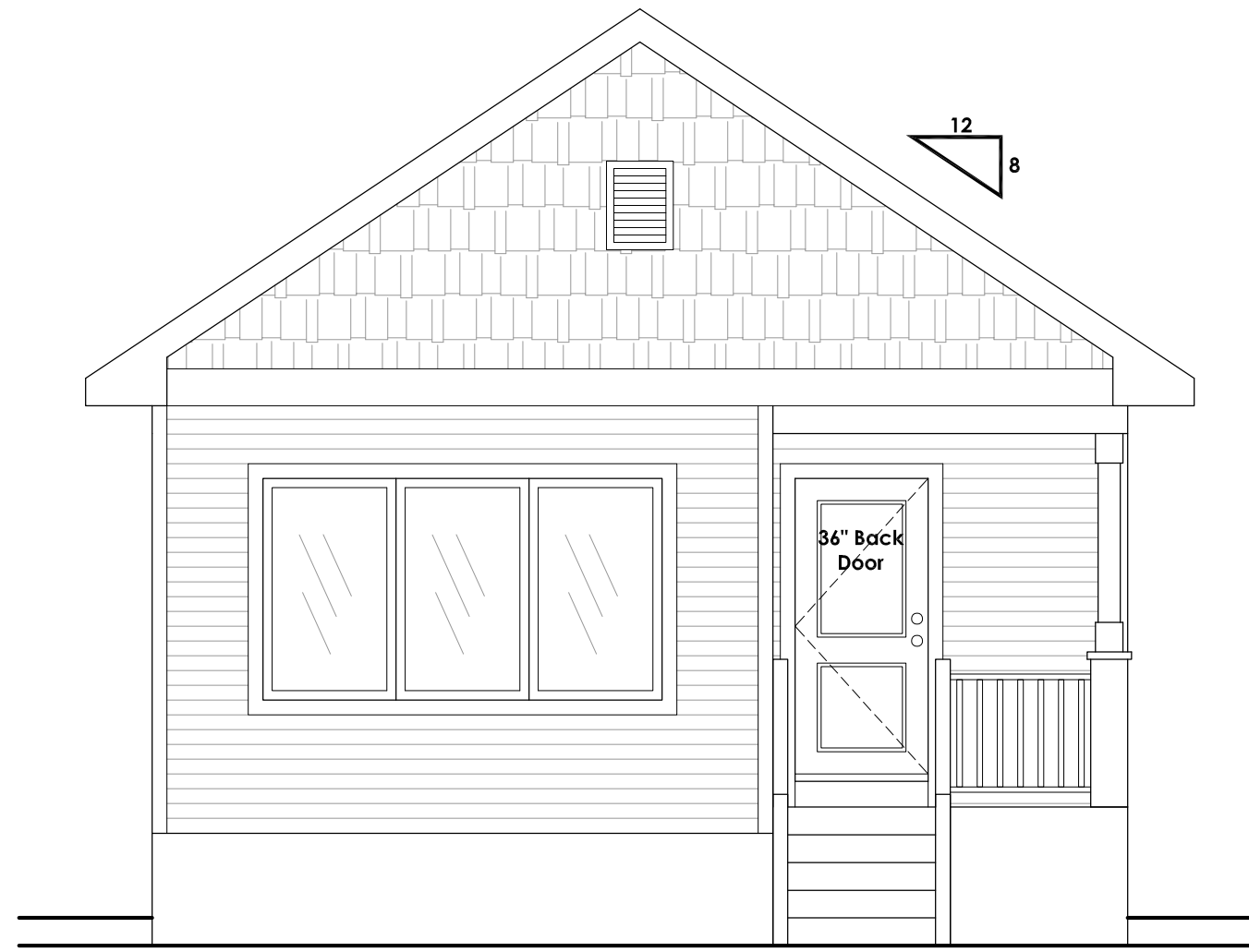


## BASEMENT PLAN CONCEPT

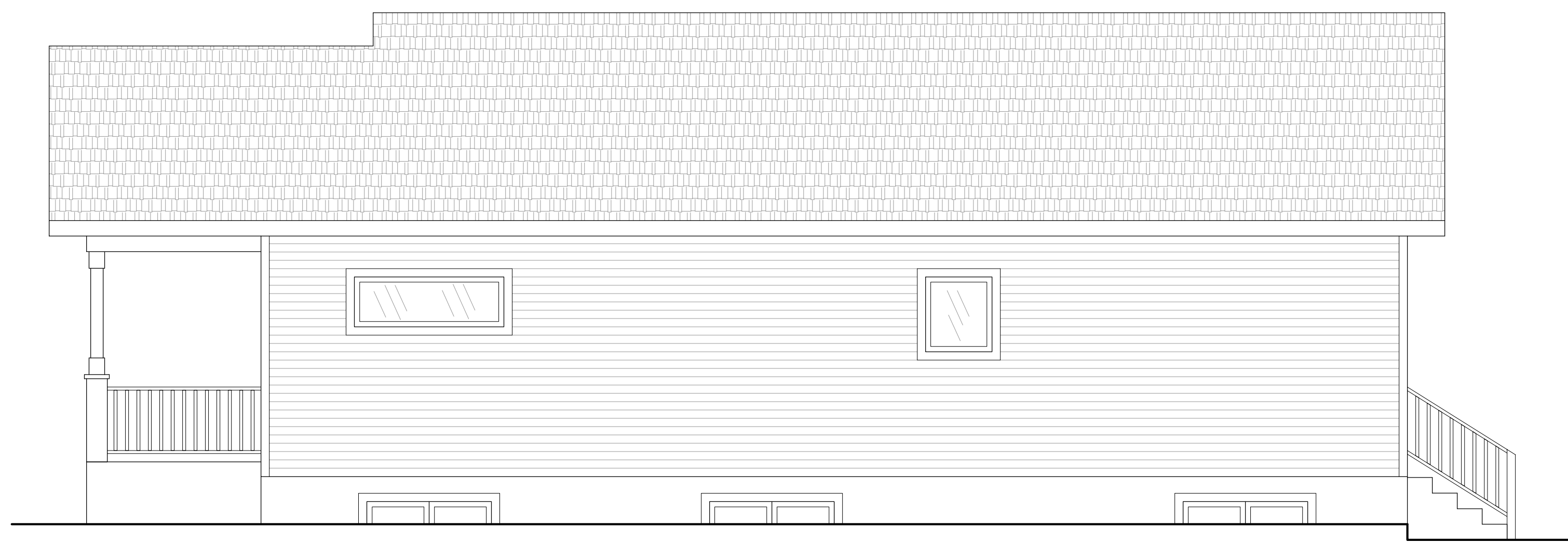
750± square feet (max finished area)

**3** of 4

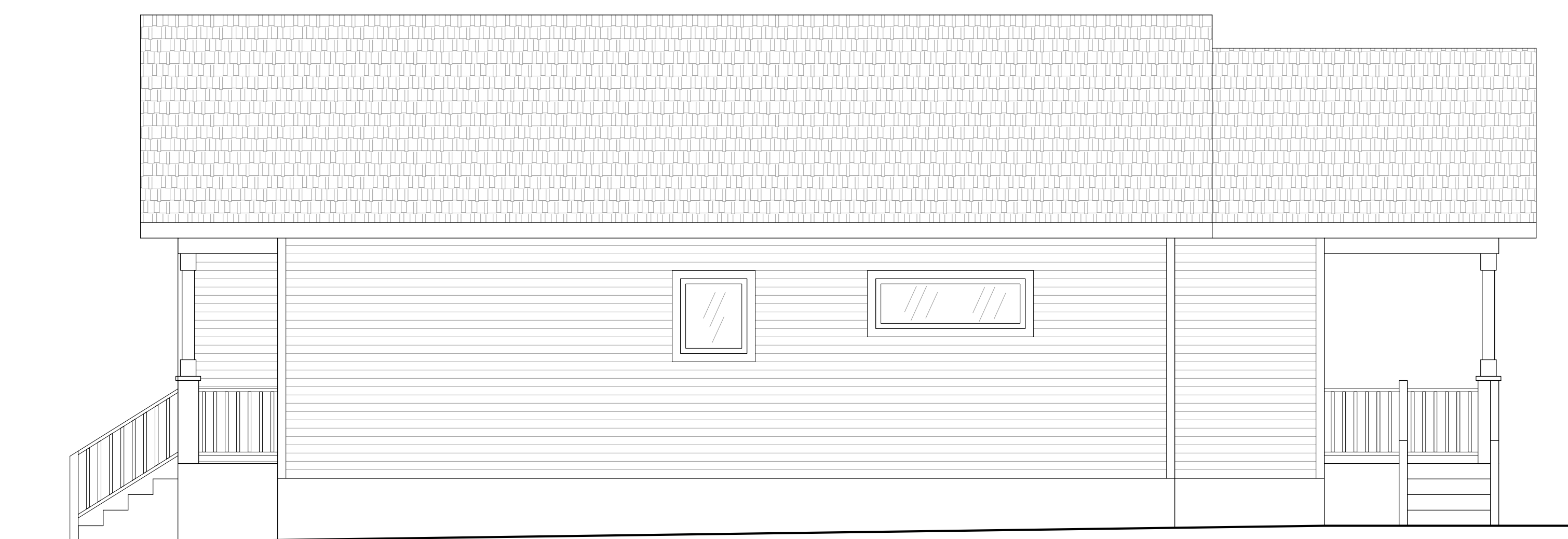
**Preliminary  
Working  
Drawings**



**HOUSE BACK (SOUTH) ELEVATION**



**HOUSE RIGHT (WEST) ELEVATION**



**HOUSE LEFT (EAST) ELEVATION**