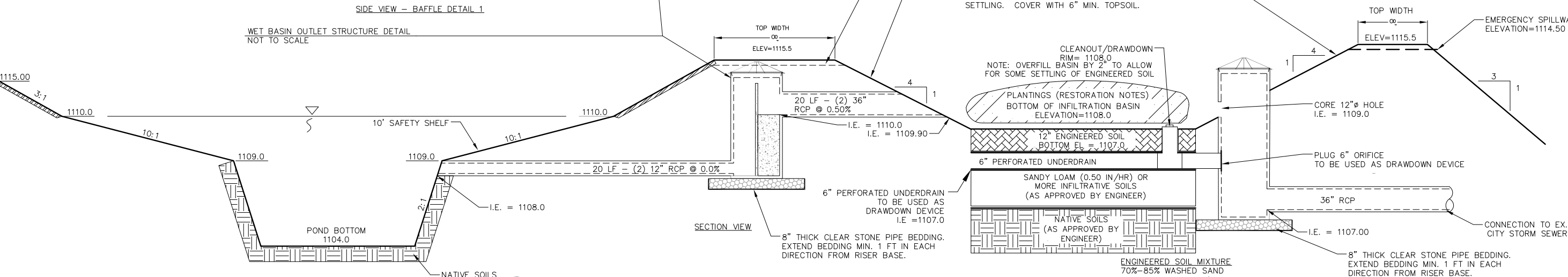
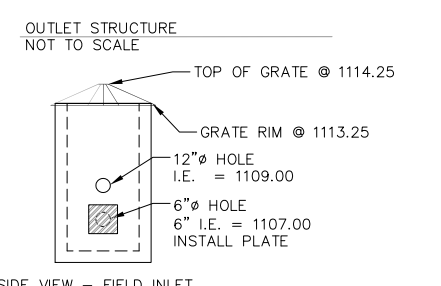


OUTLET STRUCTURE
 2-60" MANHOLE W/ HAALA CONE GRATE SIDE MOUNT GRATE (OR OTHER APPROVED BY DESIGN ENGINEER). BAFFLE TO HAVE 8" THICK INTERNAL WALL (REINFORCE W/#6 VERTICAL AND HORIZONTAL REBAR - 12" ON CENTER

OUTLET STRUCTURE
 48" MANHOLE W/ HAALA CONE GRATE SIDE MOUNT GRATE (OR OTHER APPROVED BY DESIGN ENGINEER).
 *STRUCTURE MAY CHANGE BASED ON SHOP DRAWINGS PROVIDED BY CONTRACTOR



*STRUCTURE MAY CHANGE BASED ON SHOP DRAWINGS PROVIDED BY CONTRACTOR

EMBANKMENT MATERIAL
 CONSTRUCT WITH NON-ORGANIC SOILS, COMPACTED TO 90% STANDARD PROCTOR PER ASTM D-698 PROCEDURES OR BY USING USDA NRCS, WISCONSIN CONSTRUCTION SPECIFICATION 3. INCREASE EMBANKMENT HEIGHT BY 5% TO ACCOUNT FOR SETTLING. COVER WITH 6" MIN. TOPSOIL.

CLEANOUT/DRAWDOWN
 RIM = 1108.0
 NOTE: OVERFILL BASIN BY 2" TO ALLOW FOR SOME SETTLING OF ENGINEERED SOIL

ENGINEERED SOIL MIXTURE
 70%-85% WASHED SAND
 15%-30% COMPOST (MUST MEET WDNR S100 SPECIFICATION)

1
1

WET POND/INFILTRATION FACILITY CROSS-SECTION
 NOT TO SCALE

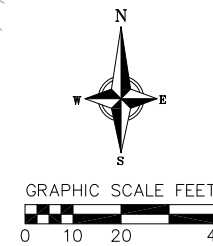
NOT FOR CONSTRUCTION

Basin Detail - 2

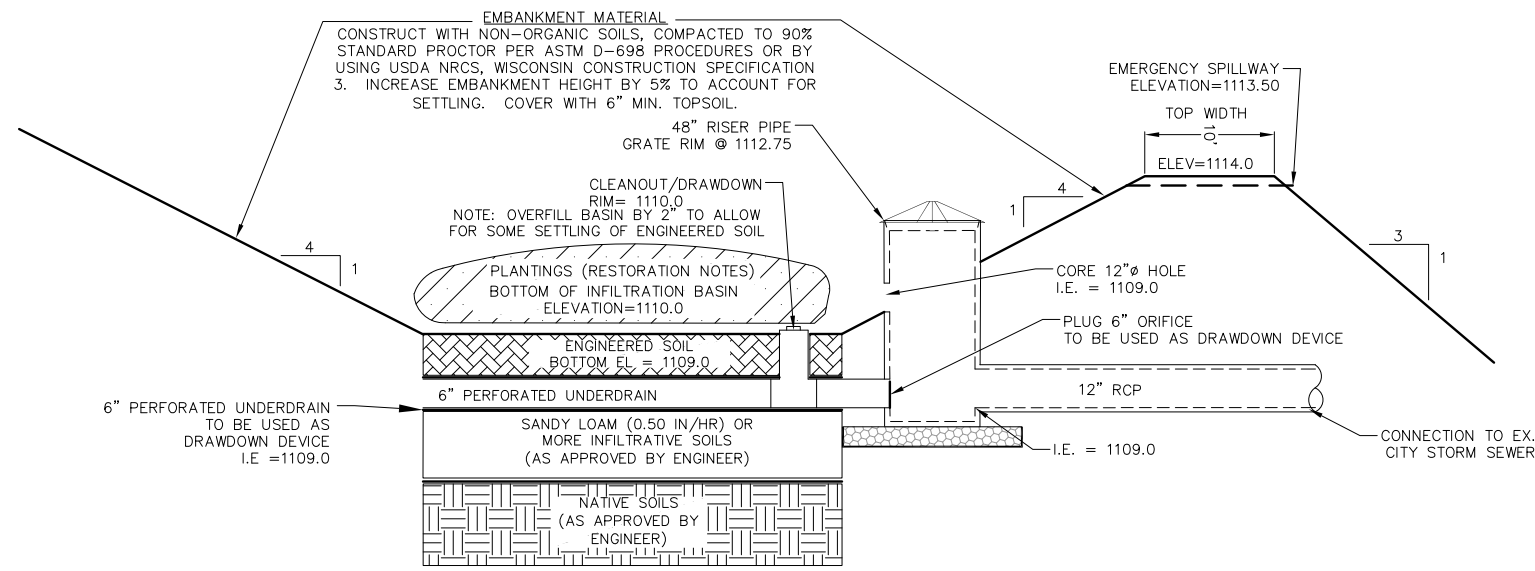
Pope Farm Estates
 City of Madison
 Dane County, Wisconsin

| NO. | DATE | REVISIONS | REMARKS |
|-----|------|-----------|---------|
| | | | |
| | | | |
| | | | |

DATE: 3/21/19
 DRAFTER: BBAR/JGOL
 CHECKED: MSCH/TSCH
 PROJECT NO.: 180222
C
10



- RESTORATION OF THE INFILTRATION AREA (NOT INCLUDING SIDE SLOPES):**
1. OVER-EXCAVATE THE AREA TO INFILTRATIVE LAYER TO BE DETERMINED IN THE FIELD, DURING EXCAVATION, BY DESIGN ENGINEER.
 2. CHISEL PLOW, OR ROTO-TILL THE BASE OF THE AREA TO BREAK UP ANY HARDPAN IN THE NATIVE SOIL LAYER.
 3. SEED, MULCH, WATER, AND MAINTAIN AS DIRECTED ABOVE.



ENGINEERED SOIL MIXTURE
70%–85% WASHED SAND
15%–30% COMPOST (MUST MEET WDNR S100 SPECIFICATION)

1 INFILTRATION FACILITY CROSS-SECTION
NOT TO SCALE



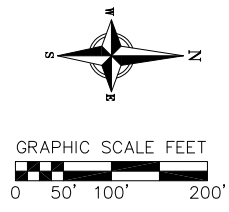
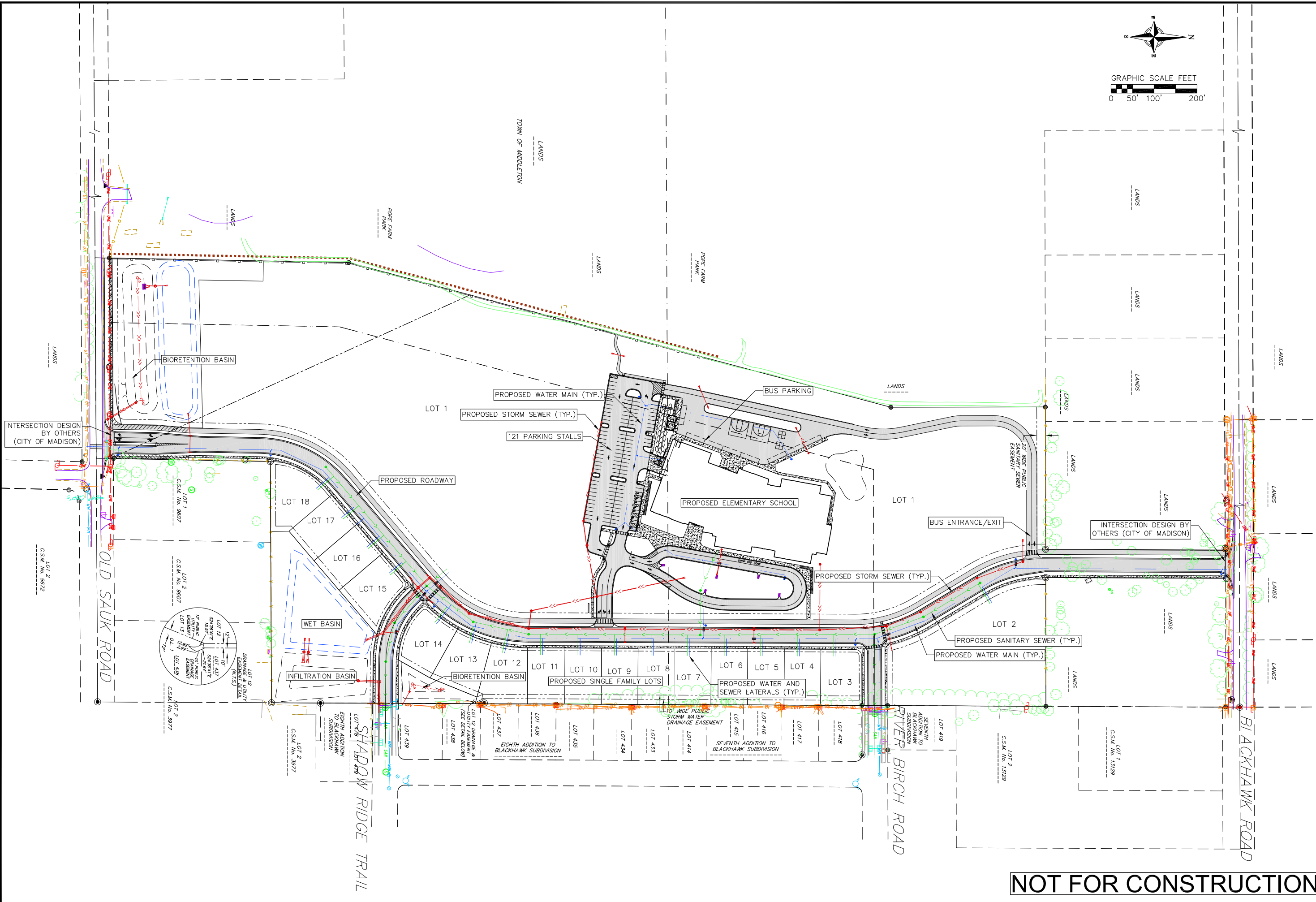
Basin Detail - 3
Pope Farm Estates
City of Madison
Dane County, Wisconsin

| REVISIONS | |
|-----------|------|
| NO. | DATE |
| | |
| | |
| | |

| | |
|-------------|-----------|
| DATE | 3/21/19 |
| DRAFTER | BBAR/JGOL |
| CHECKED | MSCH/TSCH |
| PROJECT NO. | 180222 |

C
11

NOT FOR CONSTRUCTION



Overall Site and Utility Plan
 Pope Farm Estates
 City of Madison
 Dane County, Wisconsin

| SCALE | DATE | NO. | DATE | REVISIONS | REMARKS |
|----------|---------|-----|------|-----------|---------|
| AS SHOWN | 3/21/19 | | | | |
| | | | | | |
| | | | | | |
| | | | | | |

NOT FOR CONSTRUCTION