

Parking Lot Plan Site Information Block

Site Address: 2921 Landmark Pl
 Site acreage (total) = 6.58 Acres
 Number of building stories (above grade): 5
 Building height: Approximately 71'
 DILHR type of construction (new structures):
 Lower Level: Protected, Type IA, Sprinklered, NFPA 13
 Floors 1-5: Protected, Type VA, Sprinklered, NFPA 13

Total gross square footage of building: Approximately 105,005 SF above grade and 20,910 SF below grade parking, totaling approximately 125,915 SF

Use of property: Commercial
 Gross square feet of office: 105,005 SF
 Gross square feet of retail area: 0 SF
 Number of employees in warehouse: NA
 Number of employees in production area: NA
 Capacity of restaurant/ place of assembly: NA

Number of bicycle stalls: 34 surface stalls shown (18 underground not shown)

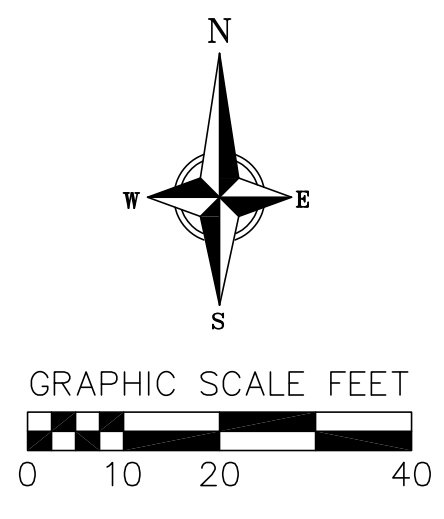
Number of parking stalls shown (Phase 1):

Large Car	43 underground, 305 surface
Accessible	2 underground, 6 surface
Total	356 stalls

Number of parking stalls shown (Phase 2):

Large Car	43 underground, 332 surface
Accessible	2 underground, 6 surface
Total	383 stalls

Number of trees shown: See Landscape Plan



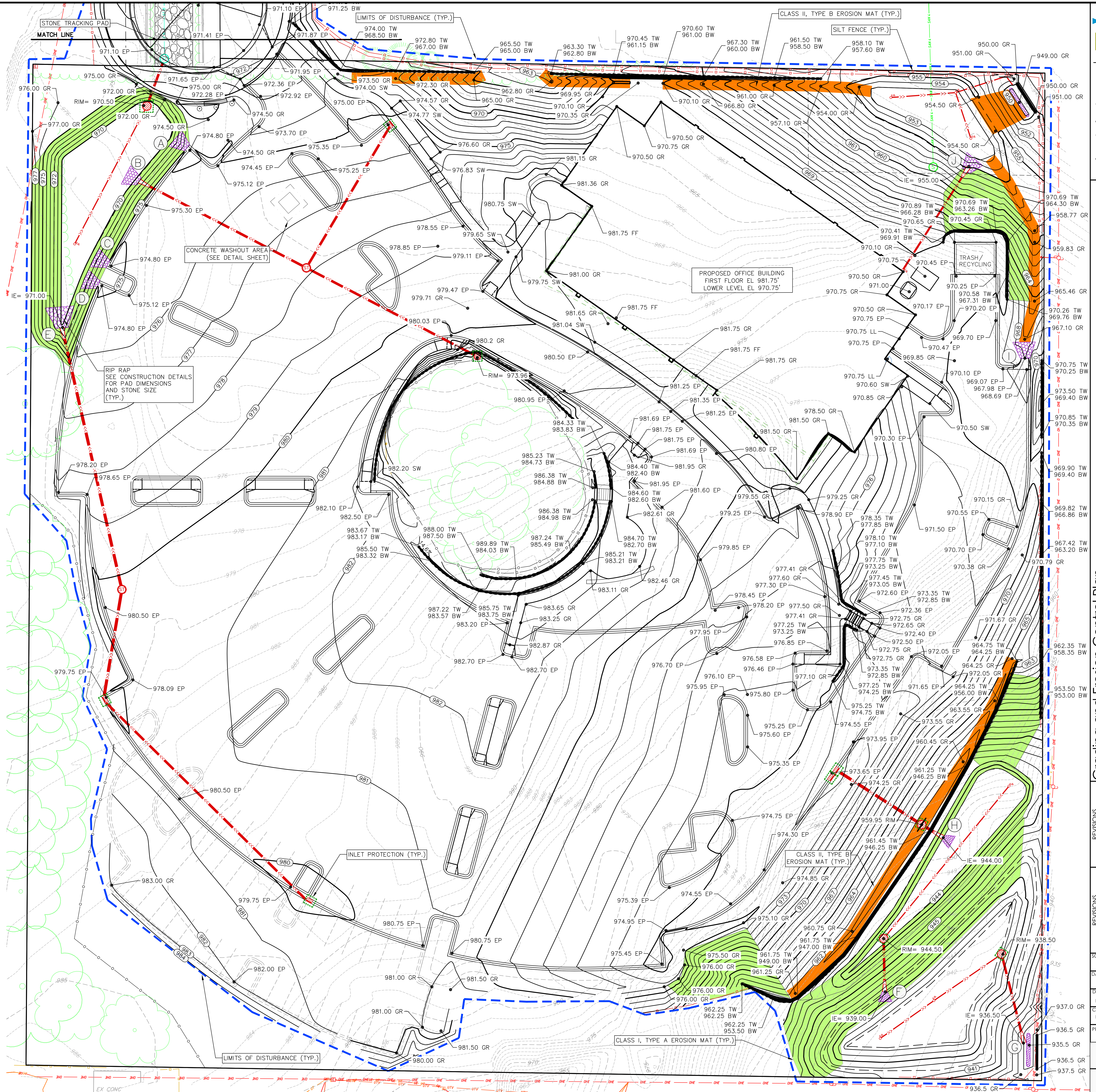
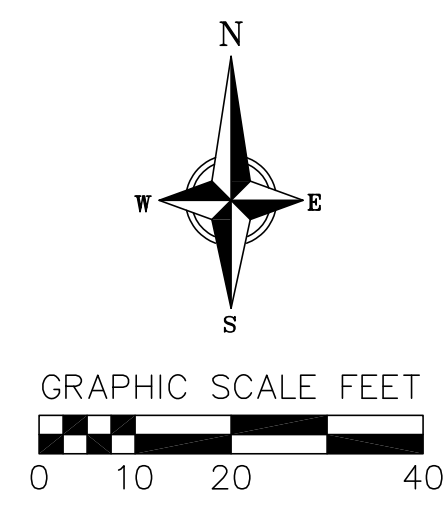
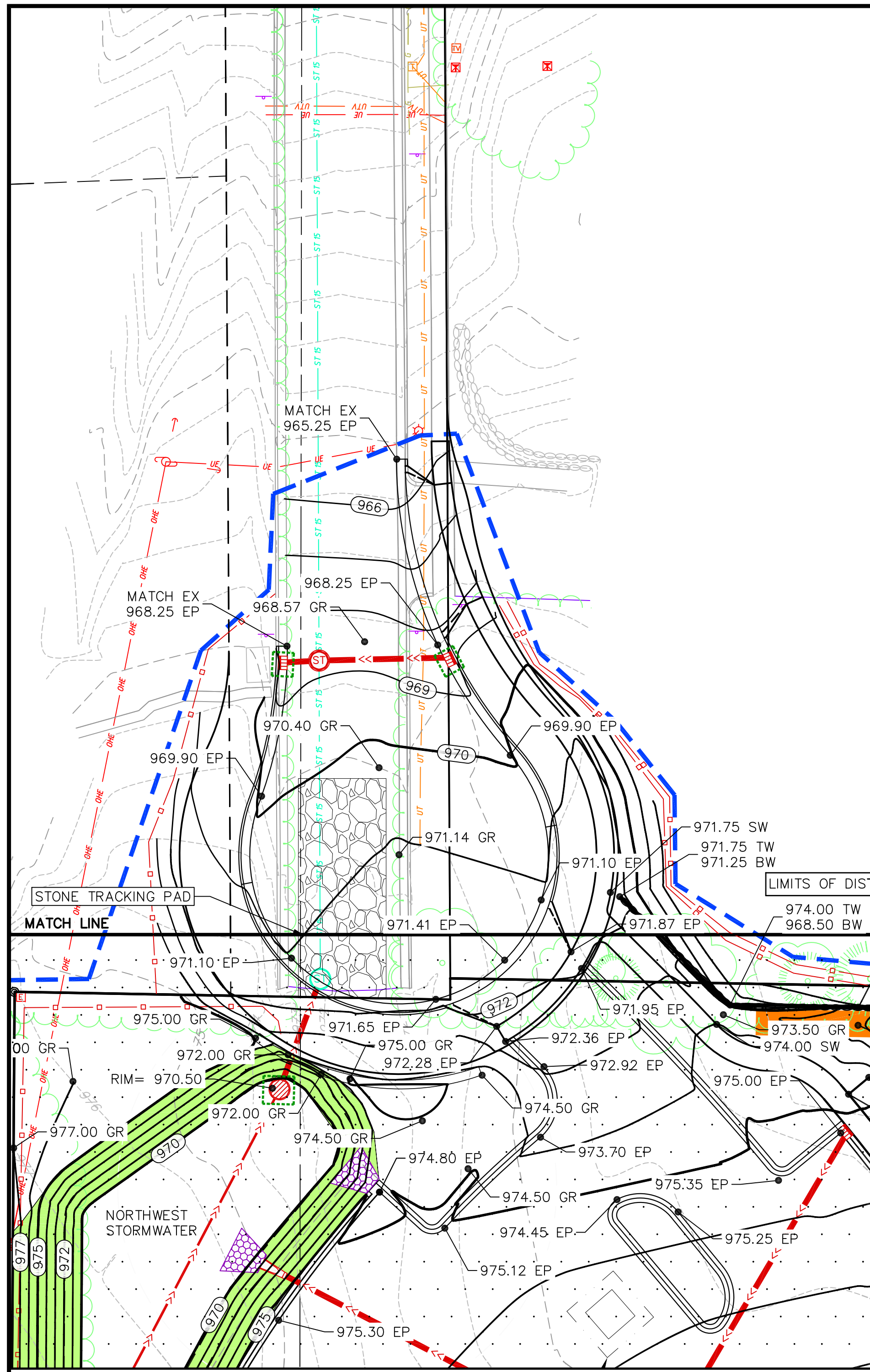
REVISIONS	NO.	DATE	REVISIONS	NO.	DATE	REVISIONS

SCALE AS SHOWN

DATE: 5/16/16
 DRAFTER: NBOW/BEHL
 CHECKED: MSCH

PROJECT NO.: 150279.00

C
4



REVISIONS	NO.	DATE	REMARKS

SCALE AS SHOWN
 DATE 5/16/16
 DRAFTER DEHL
 CHECKED MSCH
 PROJECT NO. 150279.00

