

### Option 3 Design:

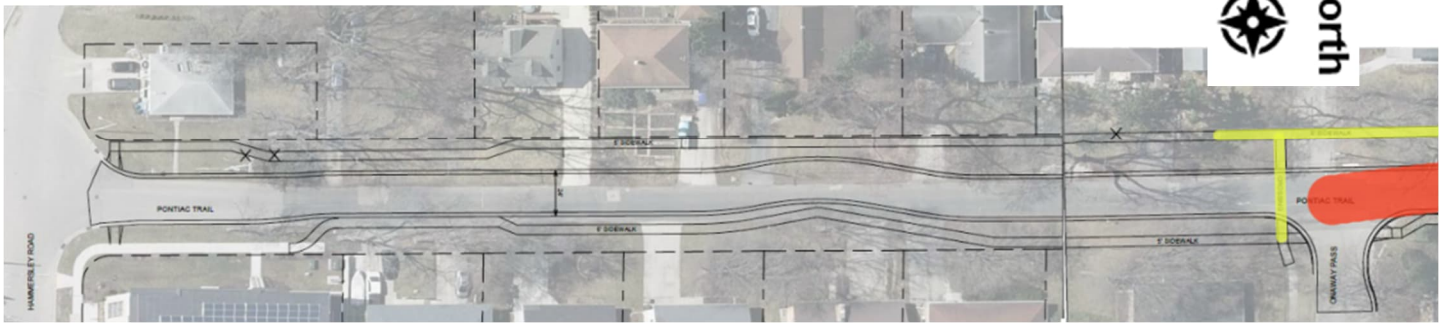


Figure 1 - South Segment - Sidewalk on both Sides due to higher density apartments

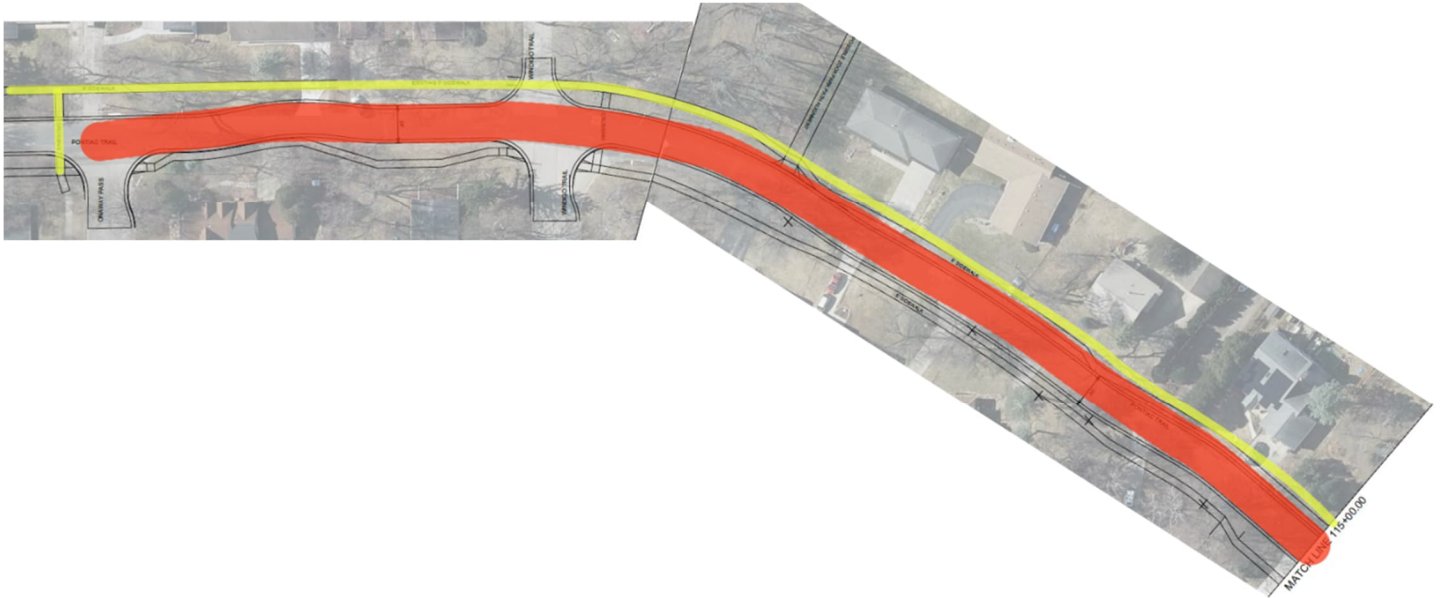


Figure 2 - Middle Segment – Sidewalk on west side (yellow). Road (red) is aligned to preserve greenspace. On the East side there would continue to be green space and canopy trees. Sidewalk shown on plans would not be built to preserve the x out trees and allow additional plantings, rain gardens and vegetation.



Figure 3 - North Segment - Single side. Preserves green space, large canopy trees, and reduces stormwater issues. Maintains historical characteristics and character of Summit Woods. Also, should preserve the large grouping of arborvitae trees that would likely be removed.