



071006210117



Show search results for 071006...

M



N SIXTH ST

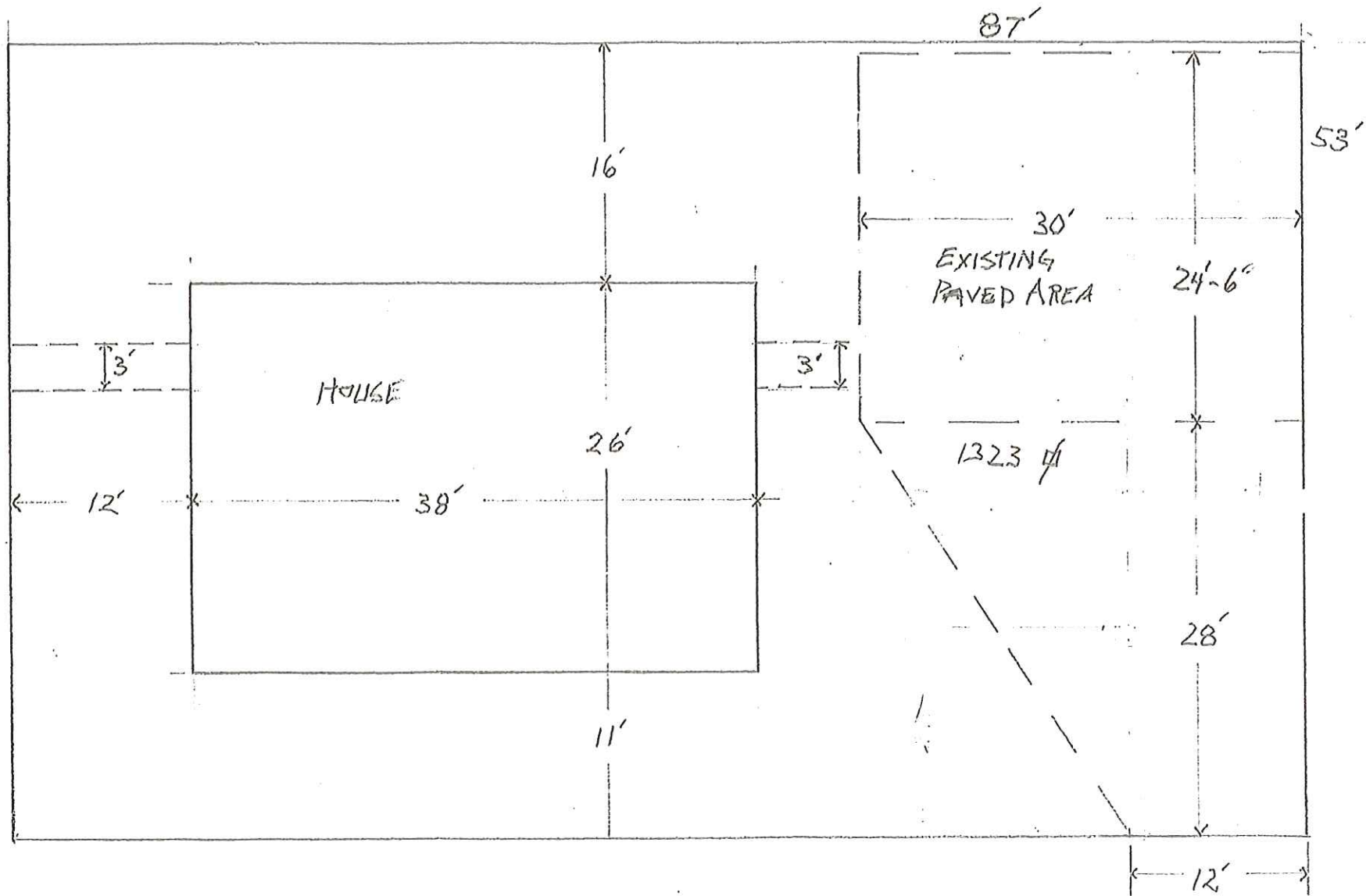
23 1/2 HOARD ST

HOARD ST

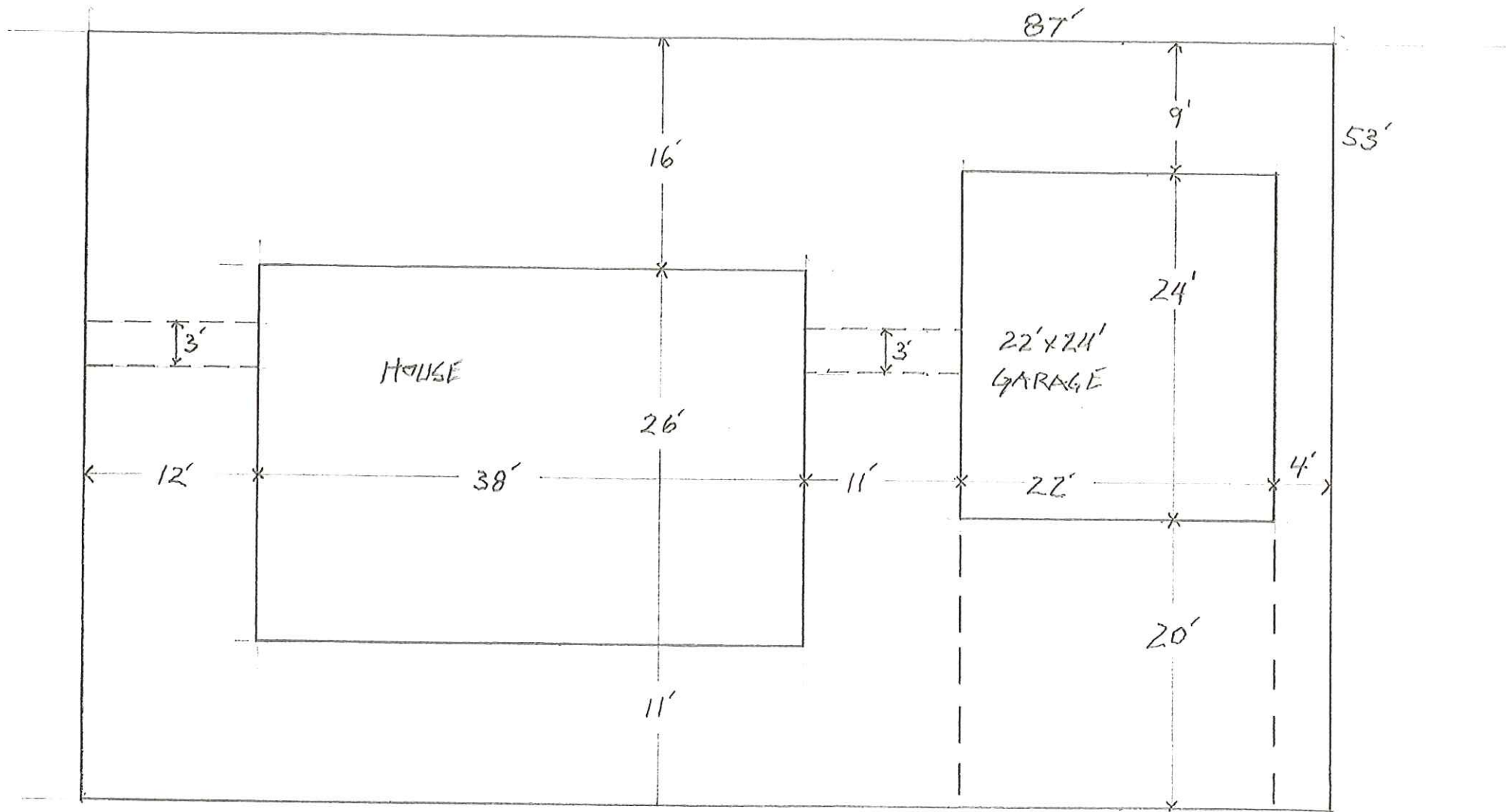
N SIXTH ST

60ft

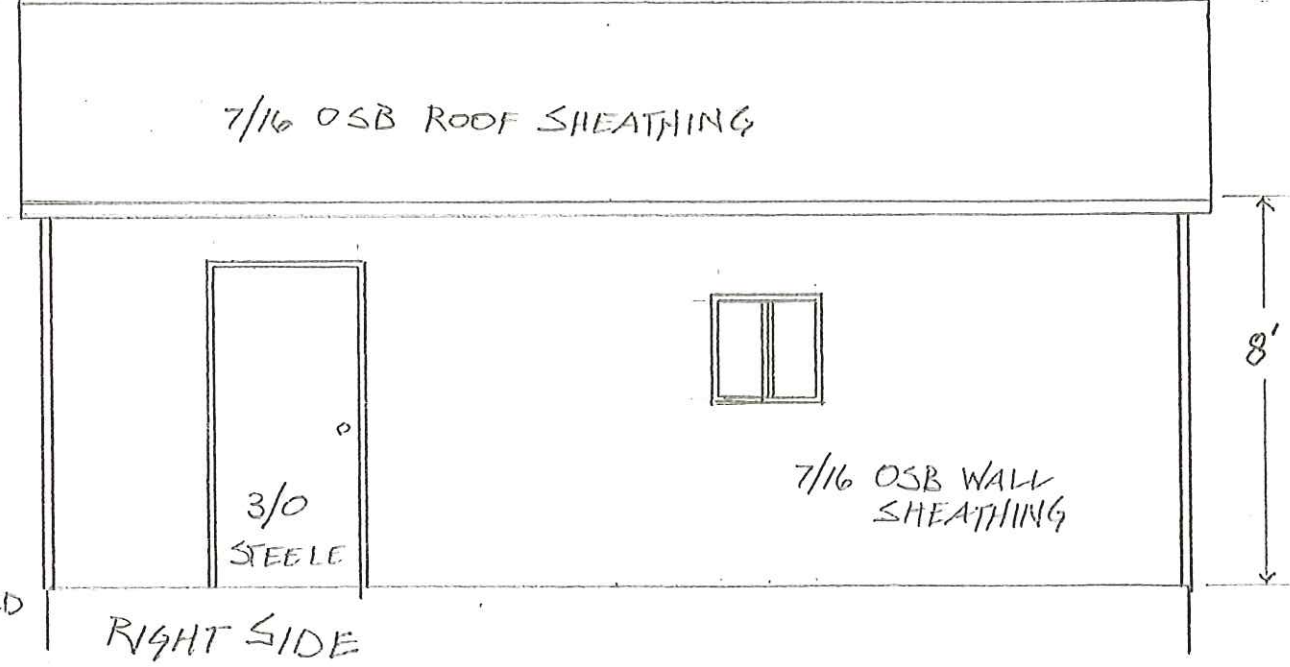
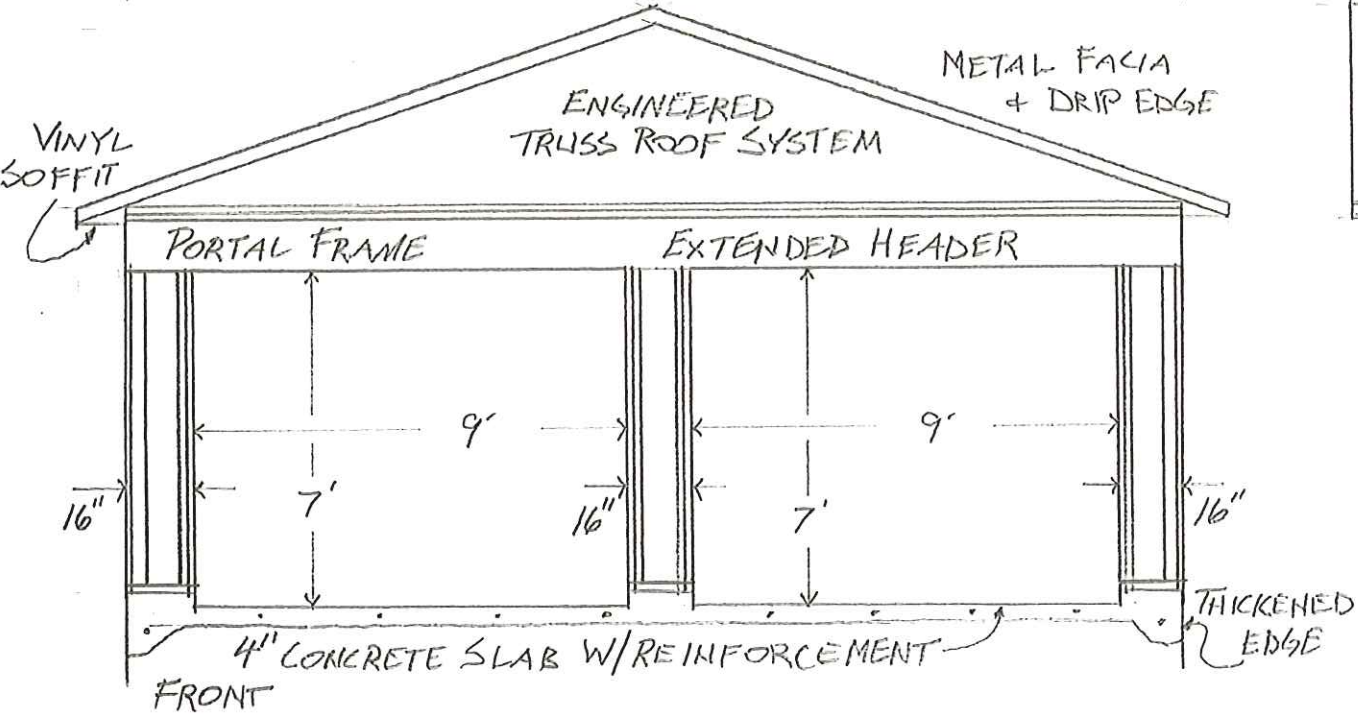
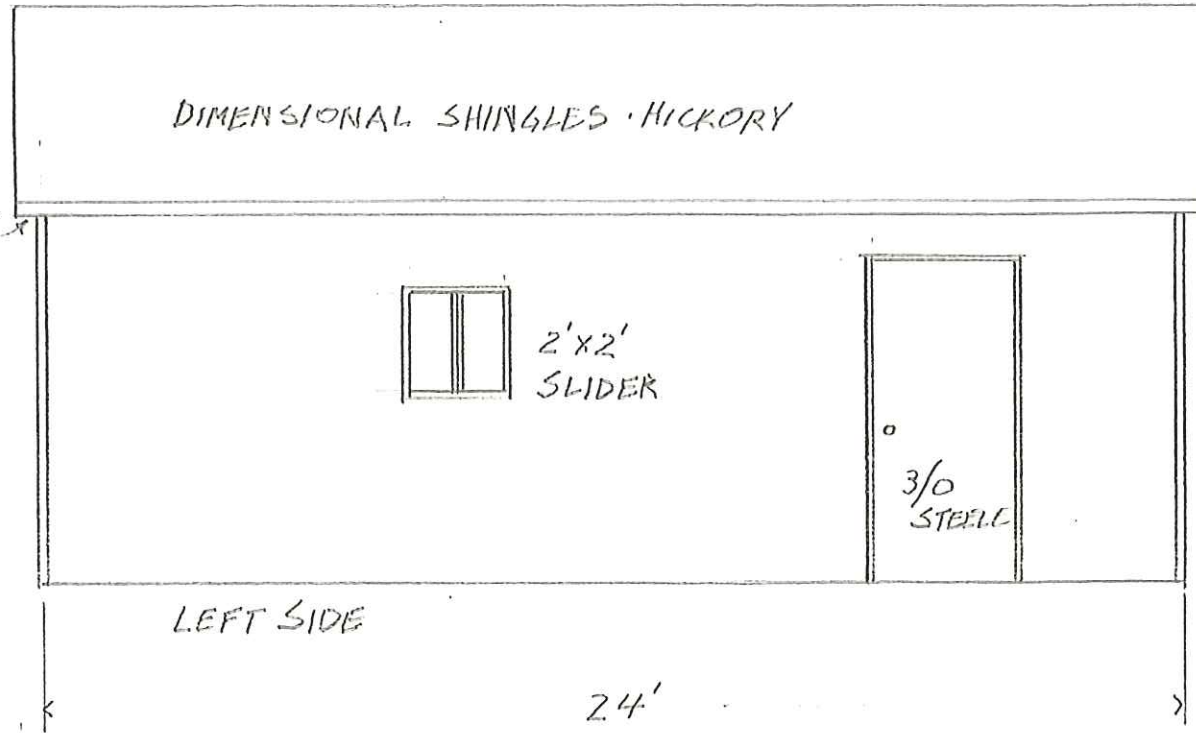
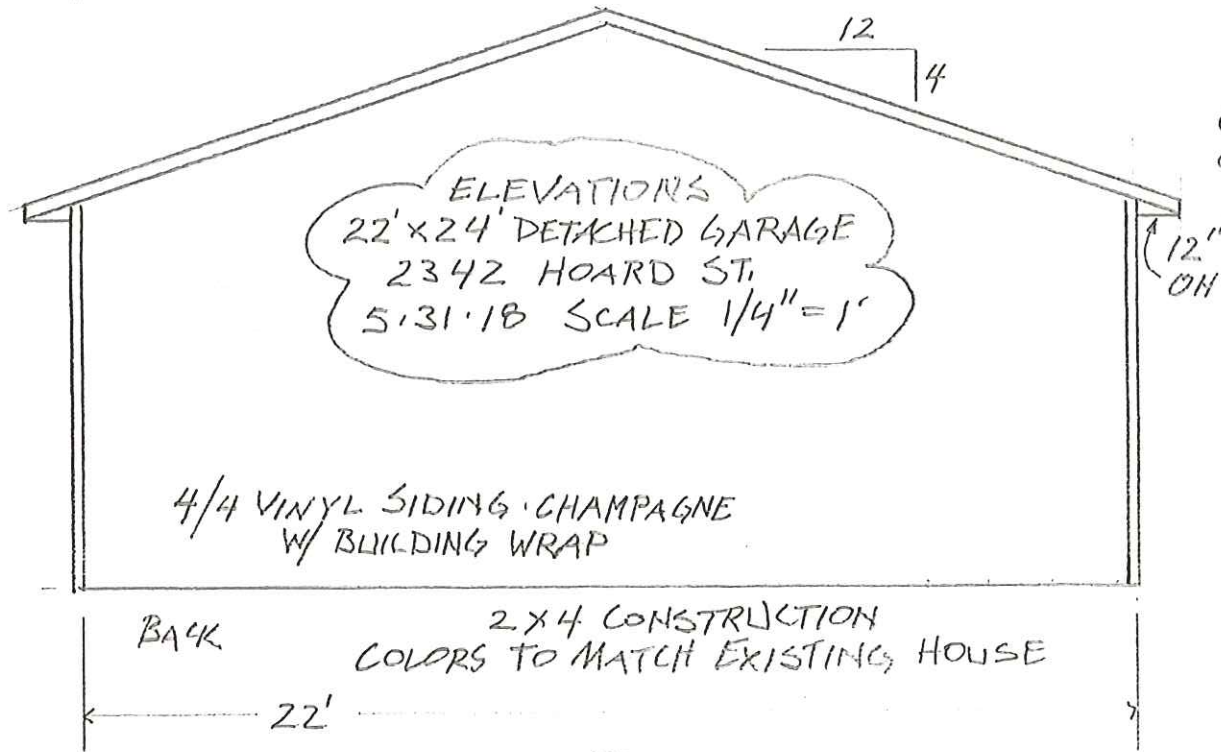
43° 06' 06" N 89° 21' 21" W

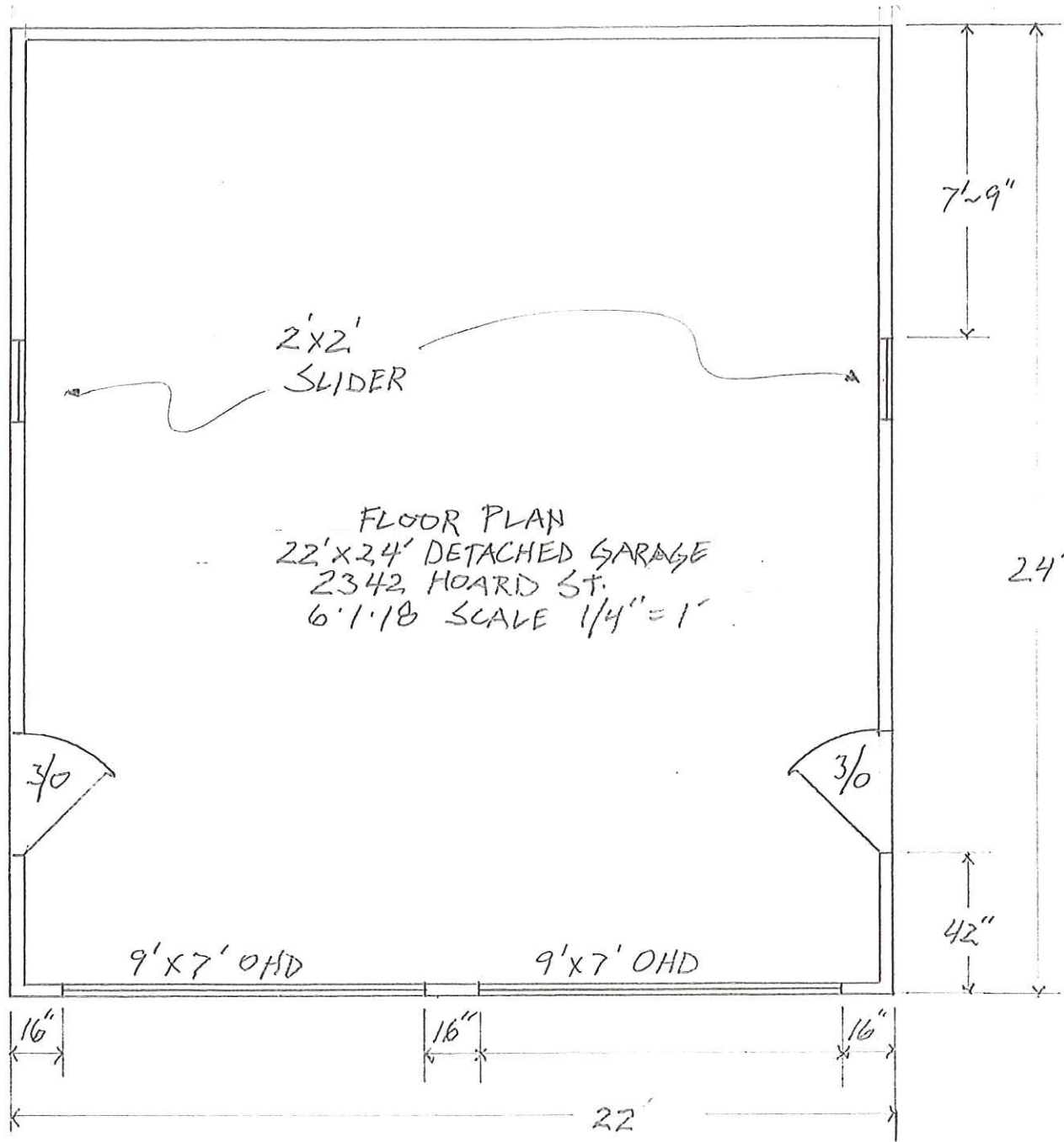


SITE PLAN 'EXISTING' 22' X 24' DETACHED GARAGE 12342 HOARD ST. 6118 SCALE 1" = 1'



SITE PLAN PROPOSED 22' X 24' DETACHED GARAGE 2342 HOARD ST. 6.1.18 SCALE 1" = 1'





2'x2'
SLIDER

FLOOR PLAN
22'x24' DETACHED GARAGE
2342 HOARD ST.
6.1.18 SCALE 1/4" = 1'

3/0

3/0

9'x7' OHD

9'x7' OHD

16"

16"

16"

22'

7'-9"

24'

42"