

Limits of Reservation Area
Per Ordinance 2091, 11 August 1966

Approximate Area of PLE for Public
Pedestrian and Bicycle Path Purposes

LEGEND (PROPOSED)
 PROPERTY BOUNDARY
 EXISTING CURB
 EXISTING DRIVEWAY
 EXISTING SIDEWALK
 EXISTING DRIVEWAY
 EXISTING SIDEWALK
 CONCRETE DRIVEWAY
 CONCRETE SIDEWALK
 PROPOSED DRIVEWAY
 PROPOSED SIDEWALK



GENERAL NOTES

1. VERIFY ALL UTILITIES AND INFORMATION BASED ON RECORDS AND SURVEY DATA AS SHOWN ON THESE PLANS. THE ENGINEER HAS CONDUCTED VISUAL SURVEY OF THE SITE AND HAS OBSERVED THE UTILITIES SHOWN ON THESE PLANS. THE ENGINEER HAS NOT CONDUCTED ANY OTHER INVESTIGATION AND IS NOT RESPONSIBLE FOR THE ACCURACY OF THE UTILITIES SHOWN ON THESE PLANS.
2. THE ENGINEER HAS CONDUCTED VISUAL SURVEY OF THE SITE AND HAS OBSERVED THE UTILITIES SHOWN ON THESE PLANS. THE ENGINEER HAS NOT CONDUCTED ANY OTHER INVESTIGATION AND IS NOT RESPONSIBLE FOR THE ACCURACY OF THE UTILITIES SHOWN ON THESE PLANS.
3. THE ENGINEER HAS CONDUCTED VISUAL SURVEY OF THE SITE AND HAS OBSERVED THE UTILITIES SHOWN ON THESE PLANS. THE ENGINEER HAS NOT CONDUCTED ANY OTHER INVESTIGATION AND IS NOT RESPONSIBLE FOR THE ACCURACY OF THE UTILITIES SHOWN ON THESE PLANS.
4. THE ENGINEER HAS CONDUCTED VISUAL SURVEY OF THE SITE AND HAS OBSERVED THE UTILITIES SHOWN ON THESE PLANS. THE ENGINEER HAS NOT CONDUCTED ANY OTHER INVESTIGATION AND IS NOT RESPONSIBLE FOR THE ACCURACY OF THE UTILITIES SHOWN ON THESE PLANS.
5. THE ENGINEER HAS CONDUCTED VISUAL SURVEY OF THE SITE AND HAS OBSERVED THE UTILITIES SHOWN ON THESE PLANS. THE ENGINEER HAS NOT CONDUCTED ANY OTHER INVESTIGATION AND IS NOT RESPONSIBLE FOR THE ACCURACY OF THE UTILITIES SHOWN ON THESE PLANS.

EXISTING UTILITIES

UTIL. TYPE	DEPTH	MARKING
WATER	48"	RED
SEWER	36"	YELLOW
ELECTRIC	24"	BLUE
TELEPHONE	24"	BLACK

PROPOSED UTILITIES

UTIL. TYPE	DEPTH	MARKING
WATER	48"	RED
SEWER	36"	YELLOW
ELECTRIC	24"	BLUE
TELEPHONE	24"	BLACK

DIAGNOSTIC HOTLINE
 Toll Free (800) 226-8511
 www.DiagnosticHotline.com

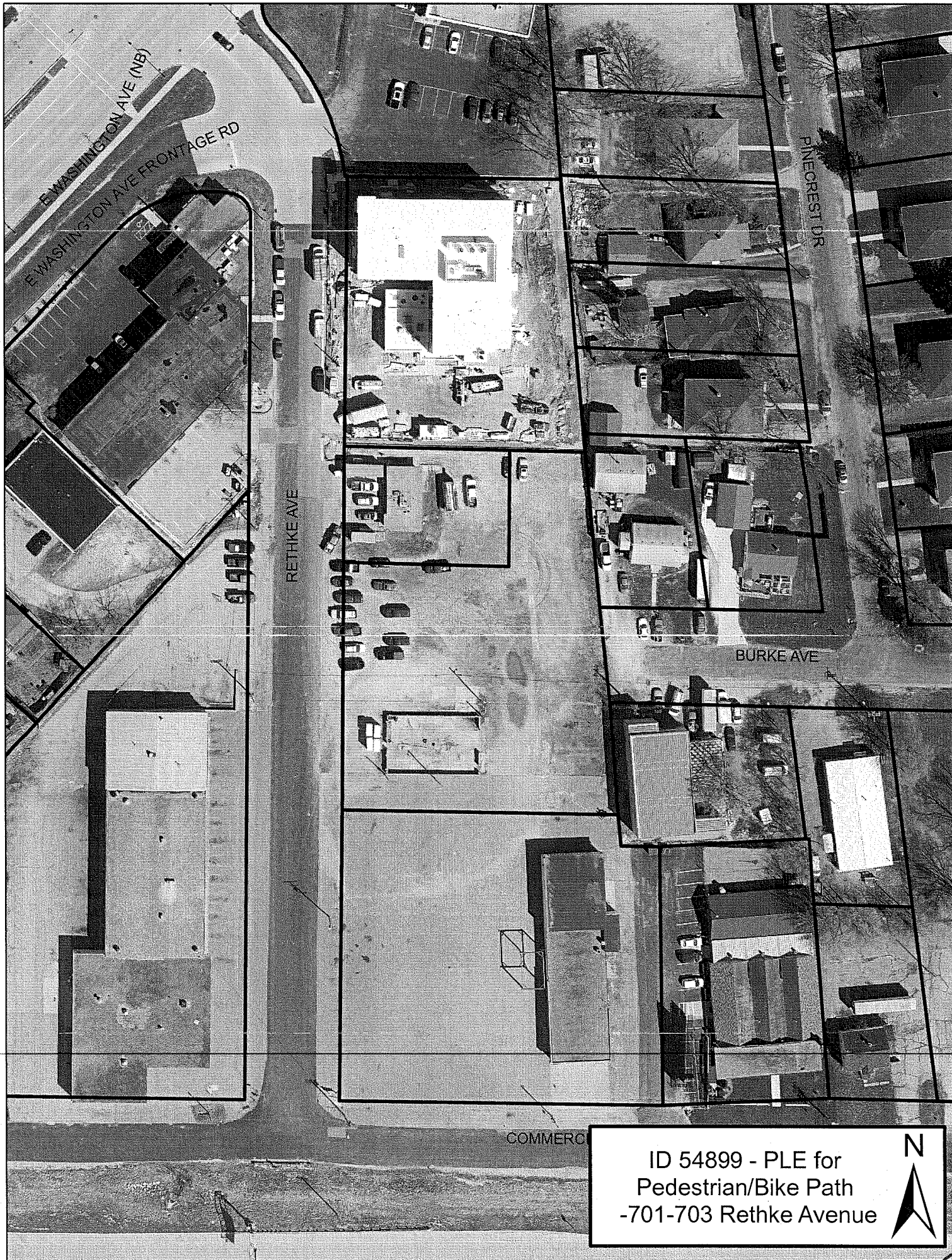
Revisions	No.	Date	Description

Scale	Sheet	Total
Graphic Scale: 0" = 10' - 20' - 30'	18-0563	30
Sheet Number	12/14/2018	C100

TWISTED FITNESS
 CITY OF MADISON, DANE COUNTY, WI
 Sheet Title: SITE PLAN

701-703 RETHKE AVENUE
 MADISON, WI 53714

WYSER ENGINEERING



ID 54899 - PLE for
Pedestrian/Bike Path
-701-703 Rethke Avenue

