

- SITE LAYOUT NOTES**
- CONTACT DIGGER'S HOTLINE 5 WORKING DAYS PRIOR TO THE START OF CONSTRUCTION.
 - ALL PROPOSED DIMENSIONS ARE REFERENCED PARALLEL OR PERPENDICULAR TO THE PROPOSED FEATURES SHOWN. WRITTEN DIMENSIONS SUPERSEDE ANY SCALED DIMENSIONS.
 - PROPOSED GRADE AND LEVEL SHALL BE PERIODICALLY REVIEWED IN THE FIELD BY THE OWNER OR A/E.
 - CONCRETE JOINTING IS SHOWN FOR DESIGN INTENT. FINAL SCORING PLANS SHALL BE SUBMITTED TO THE A/E FOR REVIEW AS A SHOP SUBMITTAL.
 - ALL CONCRETE POURS SHALL BE DOWELED TOGETHER UNLESS OTHERWISE APPROVED BY THE A/E.
 - CONTRACTOR SHALL BE RESPONSIBLE FOR SITE STAKING. DIGITAL PLAN FILES MAY BE AVAILABLE FROM THE A/E.

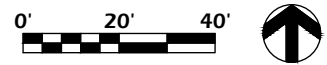
LEGEND

ASPHALT PAVEMENT	
CONCRETE PAVEMENT	
CONCRETE PAVEMENT SOLOMON COLORS - MARIGOLD	
CONCRETE PAVEMENT SOLOMON COLORS - TERRA COTTA	
PROJECT LIMIT LINE	

Revisions:

--	--





Project #: 24.017
Issued For: Review
Date: 12/9/2024



CONCRETE FINISH NOTES

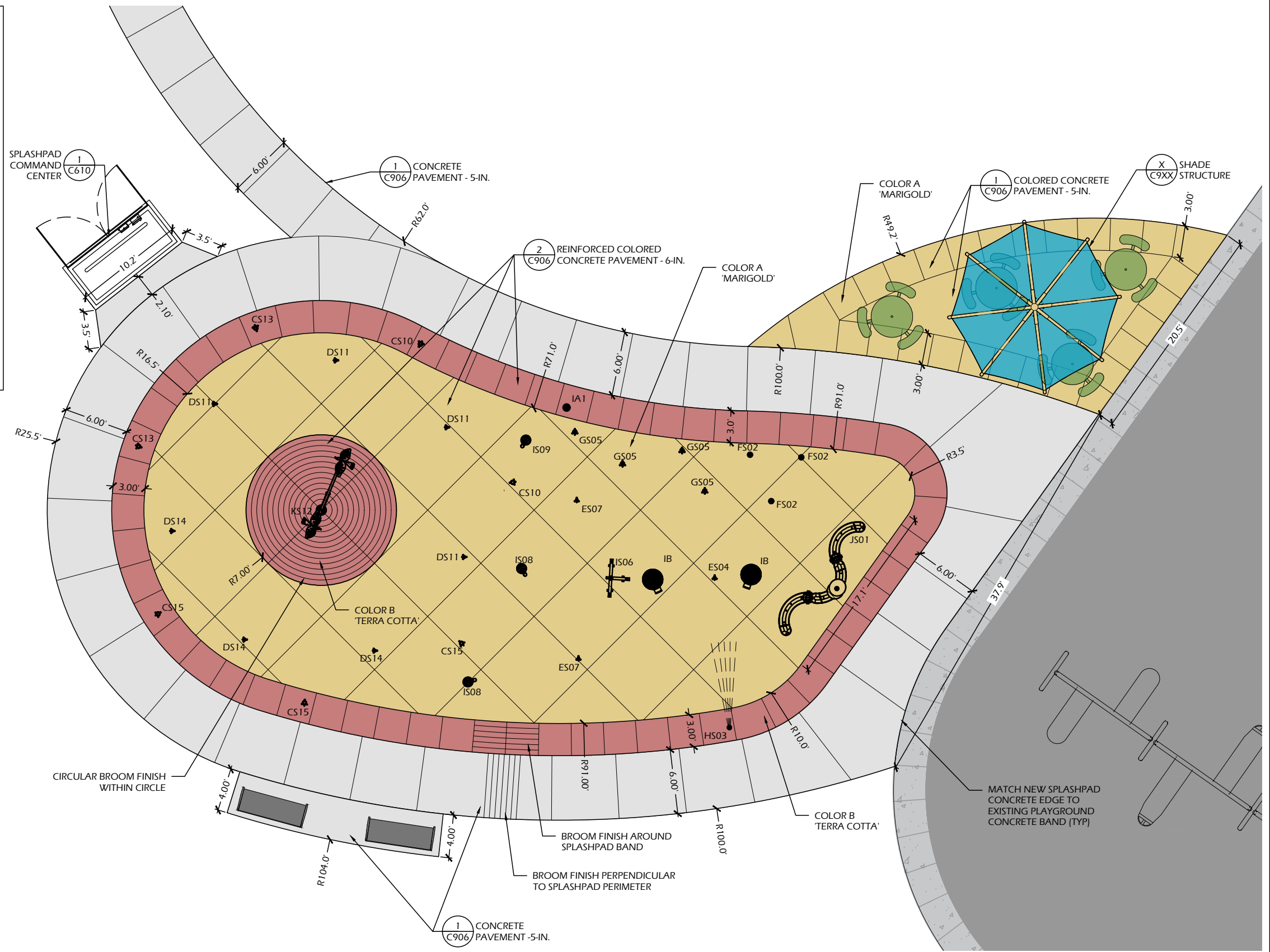
1. CONCRETE PAVEMENT - COLORED & REINFORCED - COLOR 'A':
 - 1.1. INTEGRAL COLORED CONCRETE
 - 1.1.1. SOLOMON COLORS MARIGOLD OR APPROVED EQUAL
 - 1.2. MEDIUM BROOM FINISH - SWIRL PATTERN
 - 1.3. NON-SLIP ADDITIVE SUCH AS SHARK-GRIP MUST BE APPLIED TO THE FINAL SURFACE PER SPECIFICATIONS.
2. CONCRETE PAVEMENT - COLORED & REINFORCED - COLOR 'B':
 - 2.1. INTEGRAL COLORED CONCRETE
 - 2.1.1. SOLOMON COLORS TERRA COTTA OR APPROVED EQUAL
 - 2.2. MEDIUM BROOM FINISH - SWIRL PATTERN
 - 2.3. NON-SLIP ADDITIVE SUCH AS SHARK-GRIP MUST BE APPLIED TO THE FINAL SURFACE PER SPECIFICATIONS.
3. CONCRETE PAVEMENT (DRY DECK/SIDEWALK)
 - 3.1. MEDIUM BROOM FINISH
 - 3.2. BROOMING PATTERN AS SHOWN ON PLANS
 - 3.3. NON-SLIP ADDITIVE SUCH AS SHARK-GRIP MUST BE APPLIED TO THE FINAL SURFACE PER SPECIFICATIONS, WITHIN THE SPLASHPAD PERIMETER FENCE.
4. CONTRACTOR TO CONSTRUCT 2'x2' TEST PANELS FOR APPROVAL FOR EACH CONCRETE TYPE TO DEMONSTRATE COLORS, BROOMING PATTERNS, AND SEALER FINISH. BROOM FINISH SHALL MEET SPECIFICATION REQUIREMENTS FOR SLIP RESISTANCE.
5. CONCRETE JOINTING IS SHOWN FOR DESIGN INTENT. FINAL SCORING PLANS SHALL BE SUBMITTED TO THE A/E FOR REVIEW AS A SHOP SUBMITTAL.
6. ALL CONCRETE POURS SHALL BE DOWELED TOGETHER UNLESS OTHERWISE APPROVED BY THE A/E.

LEGEND

CONCRETE PAVEMENT	
CONCRETE PAVEMENT COLOR 'A' SOLOMON COLORS - MARIGOLD	
CONCRETE PAVEMENT COLOR 'B' SOLOMON COLORS - TERRA COTTA	
PROJECT LIMIT LINE	



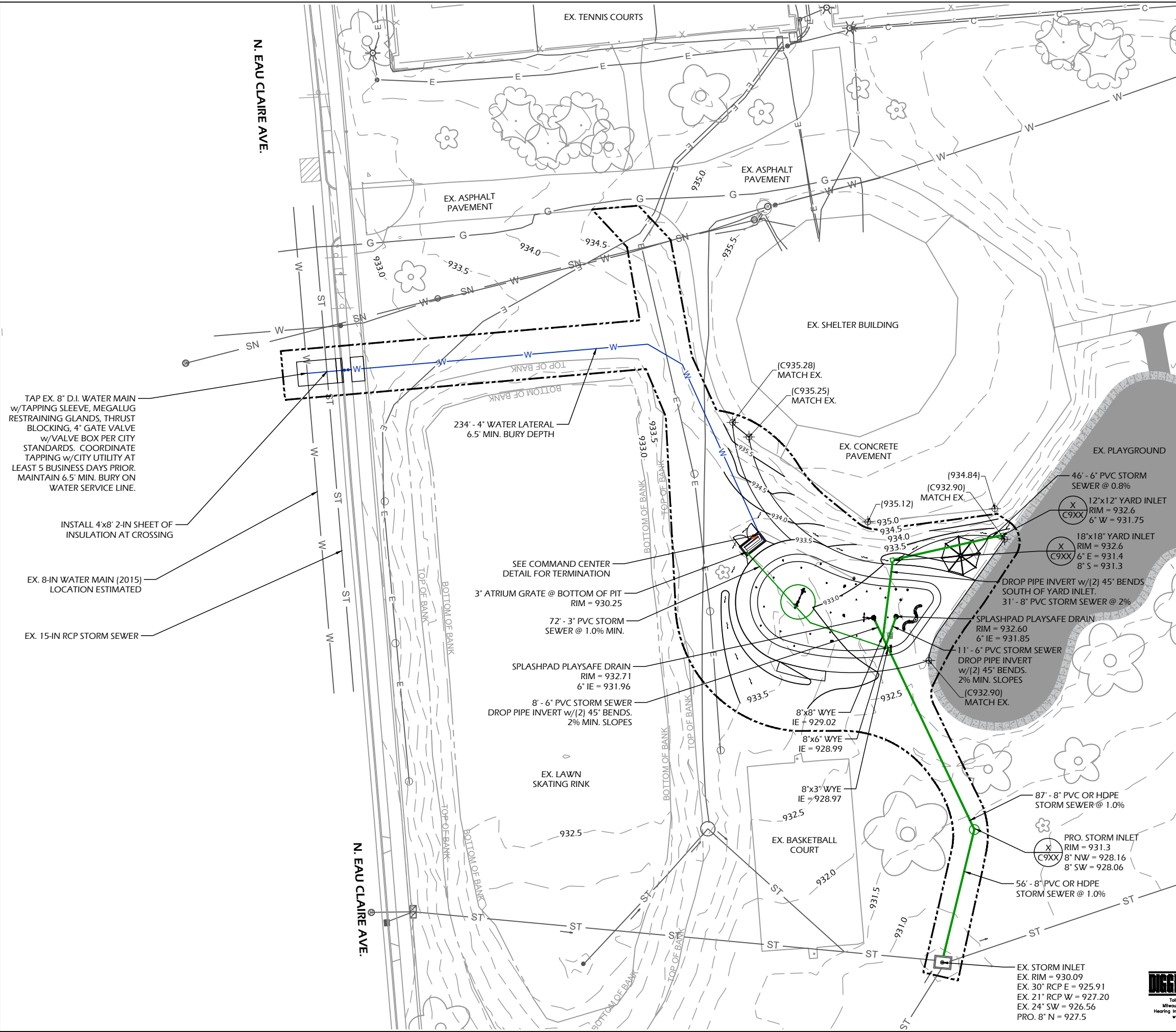
MEDIUM BROOM FINISH



File: P:\24.017 Madison Rennebohm Splashpad\CAD\P-SF.dwg Layout: C201 User: katie Plotted: Dec 10, 2024 - 2:30am



File: P:\24.017 Madison Rennebohm Splashpad\CAD\P-SC.dwg Layout: C400 User: katie Plotted: Dec 10, 2024 1:20am



- SITE GRADING NOTES**
1. ALL BIDDERS SHOULD VISIT THE SITE PRIOR TO SUBMITTING A BID AND REVIEW THE EXISTING CONDITIONS OF THE SITE.
 2. CONTACT DIGGER'S HOTLINE A MINIMUM OF 5 WORKING DAYS PRIOR TO THE START OF CONSTRUCTION.
 3. GRADE, LINE, AND LEVEL TO BE REVIEWED IN THE FIELD BY THE OWNER OR A/E.
 4. THE SITE CONTRACTOR SHALL INSTALL AND MAINTAIN ALL EROSION CONTROL ELEMENTS IN ACCORDANCE WITH THE DEPARTMENT OF NATURAL RESOURCES AND THE LOCAL GOVERNING AUTHORITY'S REGULATIONS.
 5. PLACE INLET PROTECTION AT ALL PROPOSED AND EXISTING CATCH BASINS, MANHOLES, AND INLETS FOR THE DURATION OF CONSTRUCTION.
 6. CONTOUR INTERVAL SHOWN REPRESENTS ONE-HALF (0.5') VERTICAL FOOT AND SHALL BE CONSTRUED AS FINISH GRADE.
 7. ALL HARDSCAPE SURFACES SHALL NOT EXCEED 2% RUNNING OR CROSS SLOPES UNLESS OTHERWISE INDICATED.
 8. ALL TURF AREAS SHALL MAINTAIN A MINIMUM SLOPE OF 2% UNLESS OTHERWISE INDICATED.
 9. MATCH TO EXISTING GRADE AT 5:1 MAXIMUM SLOPES BEYOND PROPOSED HARDSCAPE LIMITS EXCEPT WHERE SHOWN OTHERWISE.

- UTILITY NOTES:**
- THE CONTRACTOR SHALL CONTACT DIGGERS HOTLINE A MINIMUM OF 3 WORKING DAYS PRIOR TO THE START OF CONSTRUCTION.
 - STANDARD SPECIFICATIONS: PERFORM ALL WORK IN ACCORDANCE WITH THE PROVISIONS OF:
 - STANDARD SPECIFICATIONS FOR SEWER AND WATER CONSTRUCTION IN WISCONSIN (WSWS) LATEST EDITION
 - STATE OF WISCONSIN DEPARTMENT OF TRANSPORTATION, DIVISION OF HIGHWAYS STANDARD SPECIFICATIONS FOR ROAD AND BRIDGE CONSTRUCTION (WISDOT) LATEST EDITION
 - CONTRACTOR SHALL OBTAIN A CURRENT COPY OF ANY LOCAL MUNICIPAL STANDARD SPECIFICATIONS, PRIOR TO THE START OF CONSTRUCTION.
 - ALL UTILITIES SHALL BE INSTALLED WITH TRACER WIRE.

- STORM SEWER:**
- STORM SEWER OR CULVERTS WITHOUT DESIGNATED PIPE TYPES MAY BE SELECTED FROM THE MATERIALS LISTED IN THE SPECIFICATIONS.
 - STORM SEWER SPECIFIED AS RCP SHALL BE REINFORCED CONCRETE PIPE CONFORMING TO THE FOLLOWING SPECIFICATIONS:
 - 12" DIA - CLASS V RCP
 - 15" DIA - CLASS IV RCP
 - 18" DIA - CLASS III RCP
 - STORM SEWER SPECIFIED AS HDPE SHALL BE CORRUGATED HDPE, SMOOTH INTERIOR.
 - STORM SEWER SPECIFIED AS PVC SHALL BE SCHEDULE 40 OR SDR 26 PVC.
 - POLYETHYLENE MATERIAL SHALL CONFORM TO ASTM D3350. AN APPROVED RUBBER GASKET JOINT SHALL BE USED FOR EITHER OPTION. JOINTS FOR RCP SHALL CONFORM TO ASTM D-471. JOINTS FOR HDPE SHALL CONFORM TO ASTM F-477.
 - INSULATION MUST BE PROVIDED AT ANY CROSSINGS WITH WATER MAINS OR LATERALS WITH LESS THAN 24 INCHES OF VERTICAL SEPARATION.

- WATER MAIN & LATERALS:**
- WATER PIPE 4" DIAMETER OR LARGER SHALL BE PVC AWWA, C900 OR DUCTILE IRON AWWA C-151, CLASS52.
 - WATER PIPE LESS THAN 4" DIAMETER SHALL BE HIGH DENSITY POLYETHYLENE AWWA C-901, SDR 11 OR TYPE "K" COPPER.
 - 2" INSULATION MUST BE PROVIDED AT ANY CROSSINGS WITH STORM OR SANITARY SEWER WITH LESS THAN 24 INCHES OF VERTICAL SEPARATION.
 - INSTALL TRACER WIRE OVER THE TOP OF ALL WATER PIPING, #12-GAUGE THWN SOLID COPPER w/BLUE COATING.
 - WATER MAIN TO BE TESTED & APPROVED PER CITY OF MADISON STANDARD SPECIFICATIONS.

TAP EX. 8" D.I. WATER MAIN w/TAPPING SLEEVE, MEGALUG RESTRAINING GLANDS, THRUST BLOCKING, 4" GATE VALVE w/VALVE BOX PER CITY STANDARDS. COORDINATE TAPPING w/CITY UTILITY AT LEAST 5 BUSINESS DAYS PRIOR. MAINTAIN 6.5' MIN. BURY ON WATER SERVICE LINE.

INSTALL 4'x8' 2-IN SHEET OF INSULATION AT CROSSING

EX. 8-IN WATER MAIN (2015) LOCATION ESTIMATED

EX. 15-IN RCP STORM SEWER

SEE COMMAND CENTER DETAIL FOR TERMINATION

3' ATRIUM GRATE @ BOTTOM OF PIT RIM = 930.25

72" - 3" PVC STORM SEWER @ 1.0% MIN.

SPLASHPAD PLAYSAFE DRAIN RIM = 932.71 6" IE = 931.96

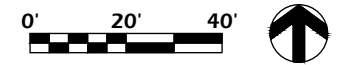
8" - 6" PVC STORM SEWER DROP PIPE INVERT w/(2) 45° BENDS. 2% MIN. SLOPES

8"x8" WYE IE = 929.02

8"x6" WYE IE = 928.99

8"x3" WYE IE = 928.97

EX. STORM INLET EX. RIM = 930.09 EX. 30" RCP E = 925.91 EX. 21" RCP W = 927.20 EX. 24" SW = 926.56 PRO. 8" N = 927.5



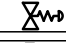
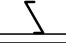

Revisions:

Project #: 24.017
Issued For: Review
Date: 12/9/2024


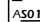
Sheet Number
C400

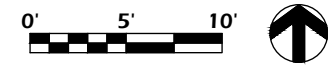
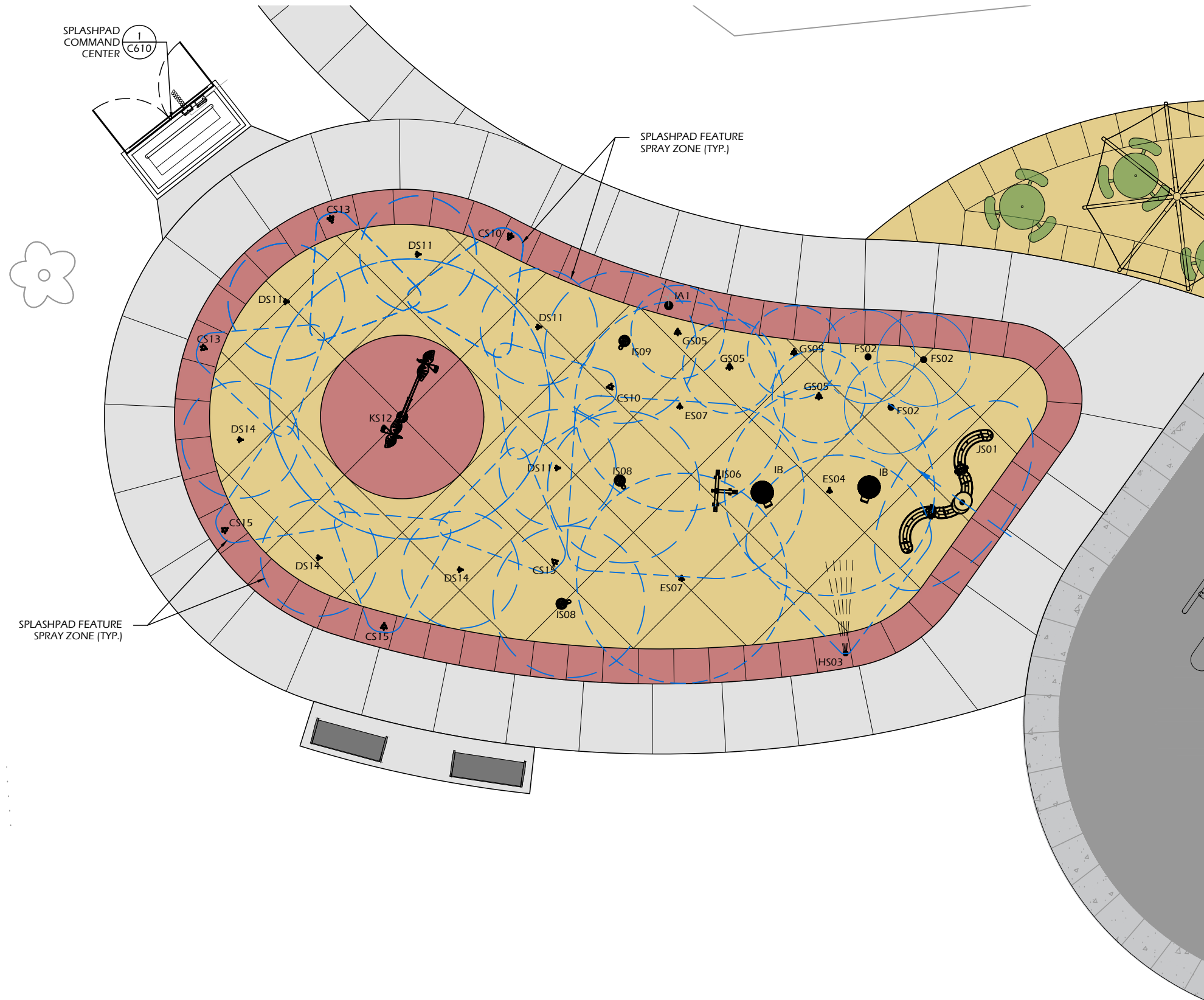
File: P:\24.017 Madison Rennebohm Splashpad\CAD\P-SF.dwg Layout: C500 User: katie Plotted: Dec 10, 2024 - 2:30am

Feature Connection Table							
Manifold Output Ref.	Solenoid Valve	Feature Ref.	Feature	Qty	Line Size	Gpm	Output (ID1)
S01	1" Std	J	Cascade River VOR 7249	1	1"	5	1
S02	1" Std	F	Water Jelly N°1 VOR 7010	3	1 1/2"	18	2
S03	1" Std	H	Rooster Tail VOR 0303	1	1"	9	3
S04	1" Std	E	Water Bloom N°1 VOR 0322	1	1"	9	4
S05	1" Std	G	Jet Stream N°2 VOR 0325	4	1 1/2"	16	5
S06	1" Std	I	Team Spray N°3 VOR 0328	1	1 1/2"	13.5	6
S07	1" Std	E	Water Bloom N°1 VOR 0322	2	1 1/2"	18	7
S08	1" Std	L	Spiroo VOR 7799	2	1"	8	8
S09	1" Std	L	Spiroo VOR 7799	1	1"	4	9
S10	1" Std	C	Split Stream VOR 7516	2	1"	6	10
S11	1" Std	D	Geyser N°1 VOR 0301	4	1 1/2"	28	11
S12	1" Std	K	Helico Birds VOR 7258	1	1 1/2"	12.5	12
S13	1" Std	C	Split Stream VOR 7516	2	1"	6.0	13
S14	1" Std	D	Geyser N°1 VOR 0301	3	1 1/2"	21.0	14
S15	1" Std	C	Split Stream VOR 7516	3	1"	9.0	15

Product Legend		
Product Ref.	Product	Qty
IA	Activator N°4 VOR 0622	1
IB	Playsafe Drain N°4 VOR1004	2
IC	Water Distribution System ECCC 2.0 Cabinet Command Center	1
ID1	MaestroPRO Controller 24 out/ 12 in VOR-33907.3200	1
ID2	MaestroPRO Power Box VOR-33907.3200	1
	4" Pressure Regulator (by Installer)	1
	4" Backflow Preventer (by Installer)	1
	1" Solenoid Valve with Ball Valve & Union (by Vortex)	15

SPLASHPAD INFORMATION	
WET DECK AREA (SF)	2400
TOTAL FEATURE FLOW RATE (GPM)	183
AVERAGE SEQUENCED FLOW RATE (GPM)	110

FEATURE REFERENCE LEGEND	
	FEATURE NAME REFERENCE
	MANIFOLD LINE NUMBER



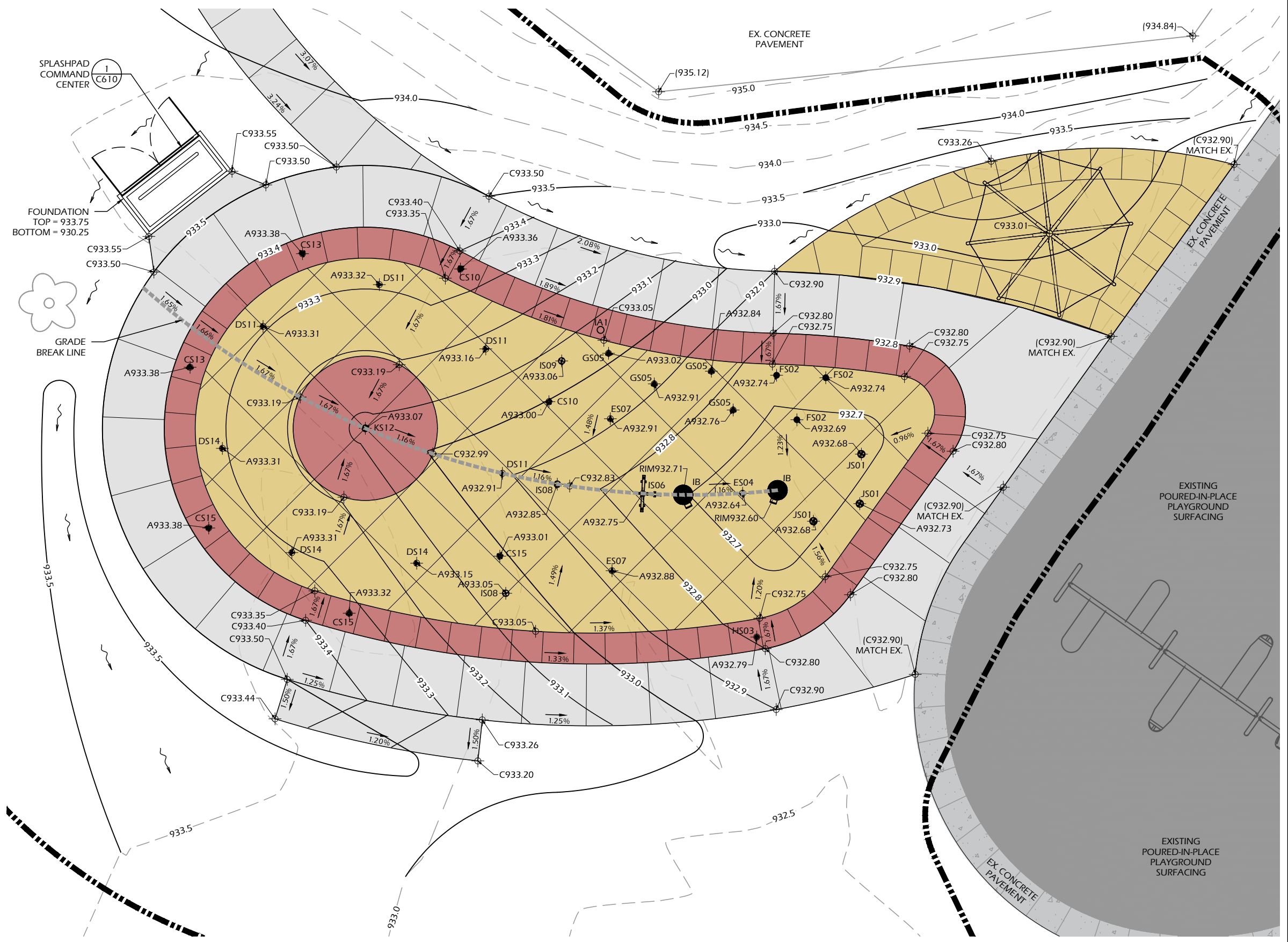
Feature Connection Table			
Manifold Output Ref.	Feature Ref.	Feature	Qty
S01	J	Cascade River VOR 7249	1
S02	F	Water Jelly N°1 VOR 7010	3
S03	H	Rooster Tail VOR 0303	1
S04	E	Water Bloom N°1 VOR 0322	1
S05	G	Jet Stream N°2 VOR 0325	4
S06	I	Team Spray N°3 VOR 0328	1
S07	E	Water Bloom N°1 VOR 0322	2
S08	L	Spiroo VOR 7799	2
S09	L	Spiroo VOR 7799	1
S10	C	Split Stream VOR 7516	2
S11	D	Geyser N°1 VOR 0301	4
S12	K	Helico Birds VOR 7258	1
S13	C	Split Stream VOR 7516	2
S14	D	Geyser N°1 VOR 0301	3
S15	C	Split Stream VOR 7516	3

Product Legend		
Product Ref.	Product	Qty
IA	Activator N°4 VOR 0622	1
IB	Playsafe Drain N°4 VOR1004	2
IC	Water Distribution System ECCC 2.0 Cabinet Command Center	1
ID1	MaestroPRO Controller 24 out/ 12 in VOR-33907.3200	1
ID2	MaestroPRO Power Box VOR-33907.3200	1
	4" Pressure Regulator (by Installer)	1
	4" Backflow Preventer (by Installer)	1
	1" Solenoid Valve with Ball Valve & Union (by Vortex)	15

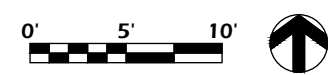
SPLASHPAD INFORMATION	
WET DECK AREA (SF)	2400
TOTAL FEATURE FLOW RATE (GPM)	183
AVERAGE SEQUENCED FLOW RATE (GPM)	110

FEATURE REFERENCE LEGEND	
A S01	FEATURE NAME REFERENCE
AS 01	MANIFOLD LINE NUMBER

SPOT GRADE ABBREVIATIONS:	
(xxx.xx)	= EXISTING GRADE
Cxxx.xx	= PROPOSED CONCRETE
Axxx.xx	= ANCHOR FINISH ELEVATION
xxx.xx	= PROPOSED FINISH SURFACE
RIMxxx.xx	= RIM ELEVATION



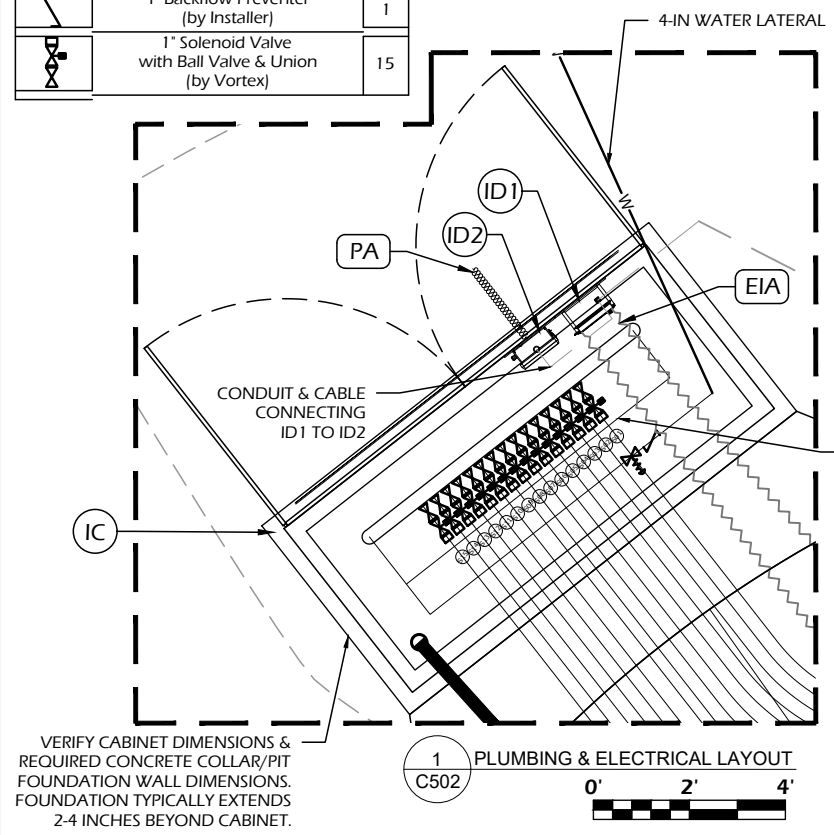
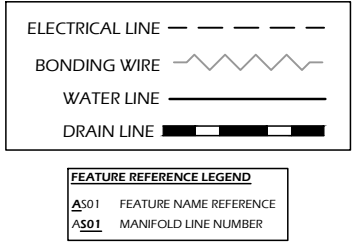
- SPLASHPAD DECK GRADING NOTES**
- SPLASHPAD DECK SHALL NOT EXCEED 5% RUNNING OR 2% CROSS SLOPES UNLESS OTHERWISE INDICATED, AND MAINTAIN A 1% MINIMUM SLOPE ON ALL WET DECK AREAS.
 - THE SPLASHPAD WET DECK SHALL SLOPE TOWARD DRAINS WITHOUT CREATING AREAS OF POOLING WATER. AREAS HOLDING STANDING WATER MORE THAN 1/8" DEEP (THICKNESS OF A QUARTER) 15 MINUTES AFTER SPRAY FEATURES ARE TURNED OFF ARE CONSIDERED TO FAIL THE SLOPE REQUIREMENTS.
 - CONTRACTOR TO ADJUST SPRAY FEATURE ANCHOR ELEVATIONS IN THE FIELD AS NEEDED.
 - CONTOURS SHOWN REPRESENT 0.1 (ONE TENTH) VERTICAL FOOT WITHIN THE SPLASHPAD AREA. CONTOURS OUTSIDE OF THE SPLASHPAD AREA REPRESENT 0.5 (ONE HALF) VERTICAL FOOT (LAWN AREAS).



File: P:\24.017 Madison Rennebohm Splashpad\CAD\P-SC.dwg Layout: C520 User: Katie Plotted: Dec 10, 2024 1:21am

Feature Connection Table							
Manifold Output Ref.	Solenoid Valve	Feature Ref.	Feature	Qty	Line Size	Gpm	Output (ID1)
S01	1" Std	J	Cascade River VOR 7249	1	1"	5	1
S02	1" Std	F	Water Jelly N°1 VOR 7010	3	1 1/2"	18	2
S03	1" Std	H	Rooster Tail VOR 0303	1	1"	9	3
S04	1" Std	E	Water Bloom N°1 VOR 0322	1	1"	9	4
S05	1" Std	G	Jet Stream N°2 VOR 0325	4	1 1/2"	16	5
S06	1" Std	I	Team Spray N°3 VOR 0328	1	1 1/2"	13.5	6
S07	1" Std	E	Water Bloom N°1 VOR 0322	2	1 1/2"	18	7
S08	1" Std	L	Spiroo VOR 7799	2	1"	8	8
S09	1" Std	L	Spiroo VOR 7799	1	1"	4	9
S10	1" Std	C	Split Stream VOR 7516	2	1"	6	10
S11	1" Std	D	Geyser N°1 VOR 0301	4	1 1/2"	28	11
S12	1" Std	K	Helico Birds VOR 7258	1	1 1/2"	12.5	12
S13	1" Std	C	Split Stream VOR 7516	2	1"	6.0	13
S14	1" Std	D	Geyser N°1 VOR 0301	3	1 1/2"	21.0	14
S15	1" Std	C	Split Stream VOR 7516	3	1"	9.0	15

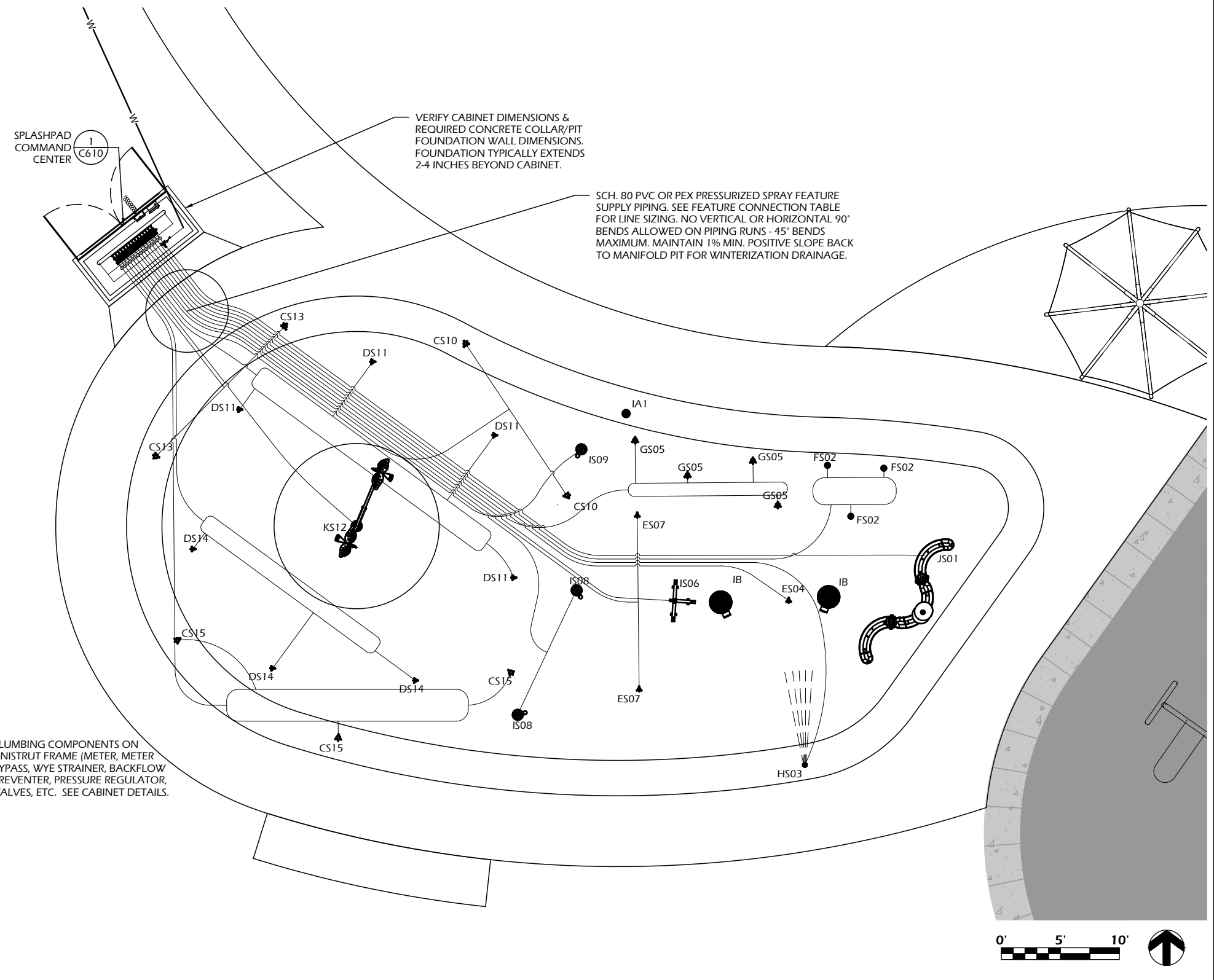
Product Legend		
Product Ref.	Product	Qty
IA	Activator N°4 VOR 0622	1
IB	Playsafe Drain N°4 VOR1004	2
IC	Water Distribution System ECCC 2.0 Cabinet Command Center	1
ID1	MaestroPRO Controller 24 out/ 12 in VOR-33907.3200	1
ID2	MaestroPRO Power Box VOR-33907.3200	1
	4" Pressure Regulator (by Installer)	1
	4" Backflow Preventer (by Installer)	1
	1" Solenoid Valve with Ball Valve & Union (by Vortex)	15



- PIPING NOTES**
1. PIPING CONFIGURATION SHOWN IS SCHEMATIC AND MAY BE MOVED OR ADJUSTED ON SITE BY INSTALLER TO ADJUST FOR SITE CONDITIONS
 2. ANY REQUIRED BACKFLOW PREVENTER AND WATER METER ON THE CITY WATER MAIN SHALL BE PROVIDED BY INSTALLER. PRESSURE REGULATOR WILL BE PROVIDED BY VORTEX.
 3. ALL PIPE LINES TO FEATURES TO HAVE A 1% MINIMUM RECOMMENDED SLOPE FOR PROPER WINTERIZATION.
 4. ALL LINE SIZING (FEATURE CONNECTION TABLE) ASSUMES A MAXIMUM DISTANCE OF 100 FEET BETWEEN THE WATER DISTRIBUTION MANIFOLD AND THE FURTHEST PLAY PRODUCT.
 5. PRESSURE LINES ARE RECOMMENDED TO BE SCHEDULE 80 PVC OR PEX, AND NON-PRESSURE LINES TO BE SCHEDULE 40.
 6. PIPING SHOULD BE INSPECTED AFTER TRANSPORTATION FOR CUTS, SCRATCHES, GOUGES OR SPLITS; DAMAGED SECTIONS MUST BE DISCARDED OR CUT OUT.
 7. FEATURE SUPPLY PIPING SHALL BE INSTALLED A MINIMUM OF 12" DEEP, 18" PREFERRED.
 8. SPECIAL CONSIDERATIONS SHOULD BE TAKEN FOR THERMAL CONDITIONS, EXPANSION AND CONTRACTIONS DUE TO TEMPERATURE SHOULD BE EVALUATED BEFORE THE INSTALLATION BY THE CONTRACTOR.
 9. VALVE NUMBER 1 IS LOCATED TO THE LEFT OF THE MANIFOLD FACING THE CONTROLLER.
 10. MINIMUM 50 PSI REQUIRED AT THE INLET OF THE BACKFLOW PREVENTER AND PRESSURE REGULATING DEVICE.

SPLASHPAD INFORMATION	
WET DECK AREA (SF)	2400
TOTAL FEATURE FLOW RATE (GPM)	183
AVERAGE SEQUENCED FLOW RATE (GPM)	110

NO 90° VERTICAL OR HORIZONTAL BENDS IN SUPPLY OR DRAINLINE PIPES SHALL BE PERMITTED. CONTRACTOR SHALL OBTAIN INSPECTION BY OWNER OR A/E PRIOR TO COVERING ALL PIPES WITH BEDDING. CONTRACTOR SHALL PHOTO DOCUMENT ALL PIPE RUNS PRIOR TO PLACING COVER BEDDING.



File: P:\24.017 Madison Rennebohm Splashpad\CAD\P-SP.dwg Layout: C530 User: katie Plotted: Dec 10, 2024 - 2:33am

PARKITECTURE + PLANNING
 901 Deming Way, Suite 201
 Madison, WI 53717
 608.203.8203

Project Name: RENNEBOHM PARK SPLASHPAD
 115 N. Eau Claire Avenue
 Madison, WI 53705

Sheet Title: SPLASHPAD PLUMBING PLAN

Project #: 24.017
Issued For: Review
Date: 12/9/2024

Sheet Number: C530

File: P:\24.017 Madison Rennebohm Splashpad\CAD\P-SF.dwg Layout: C550 User: katie Plotted: Dec 10, 2024 - 2:36am



FINAL PROJECT MAY VARY FROM RENDERINGS



RENNEBOHM PARK SPLASHPAD

115 N. Eau Claire Avenue
Madison, WI 53705

SPLASHPAD RENDERINGS

Project Name:

Revisions:

Project #: 24.017
Issued For: Review
Date: 12/9/2024

Sheet Number

C550