

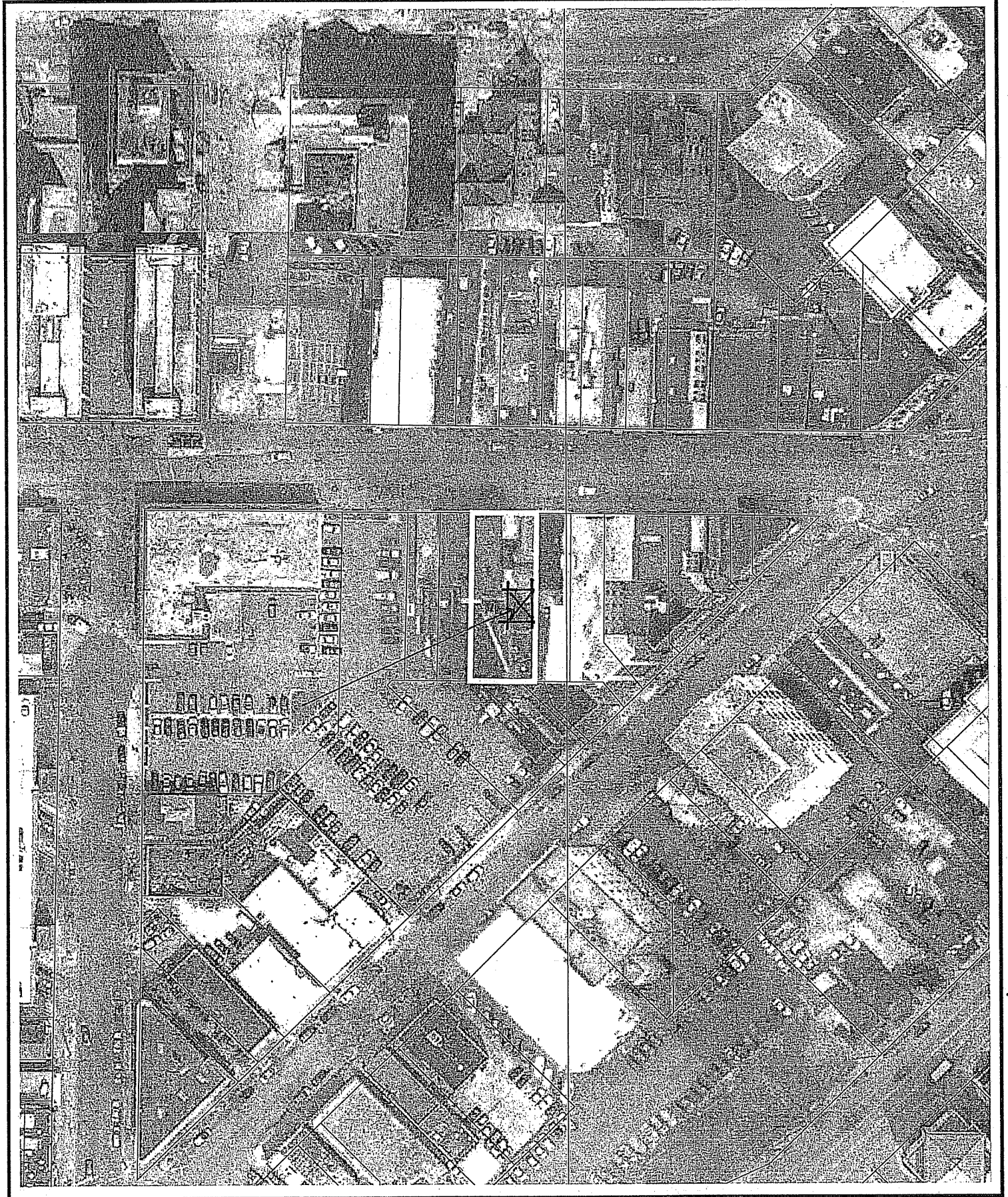
523 State Street

0

100 Feet



Date of Aerial Photography - April 2000 & 2003



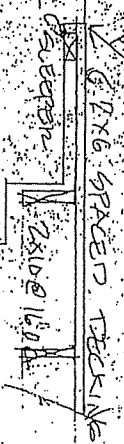
SCHULTZ DESIGN AND CONSULTING INC

130:0

NOTE: EXISTING CONC FOOTINGS
FOUNDATION ARE TO REMAIN AS IS
EXCEPT WHERE NEW C/S ARE

NOTE:

EXISTING CONC. STAIRS



MONTPAS ON STATE

MONTPAS BL3 STATE STREET

FOOT PLAN

1/4" = 1'-0"

