

Midvale Boulevard, Tokay Boulevard and Waite Circle Resurfacing Assessment District - 2009



Project Engineer: Steve Sonntag 267-1997

Alder: Brian Solomon, District 10; Chris Schmidt, District 11 & Thuy Pham-Remmele, District 20

Project Limits: Midvale Boulevard - Hammersley Road to Mineral Point Road
Tokay Boulevard - Midvale Boulevard to Coaromar Drive
Waite Circle - Midvale Boulevard to East End

Project Summary:

MIDVALE BOULEVARD

The Street will be widened from 32' face to face to 34' face to face in each direction to accommodate the addition of a multiuse bike lane/parking lane (see attached typical). We will be relocating the median curb two feet on each side of the median. Type H curb will be installed on all medians (1' head, 1' flag). The street will be excavated 8 feet from the new curb and gutter and new base course and 5.25" of asphalt installed. The remainder of the street will be milled and overlaid with 2" of asphaltic pavement. Curb and gutter, sidewalk, and drive aprons will be replaced where needed. New storm sewer will be installed in the medians. Storm sewer inlets will be replaced on an as needed basis.

WAITE CIRCLE

New storm sewer will be installed to improve existing drainage problems. Curb and gutter and drive aprons will be replaced where necessary. The street will be pulverized and resurfaced utilizing the existing street width and corner radii.

TOKAY BOULEVARD

Curb and gutter, sidewalk, and drive aprons will be replaced where necessary. The street will be resurfaced utilizing the existing street width and corner radii. NOTE: This will complete the 2006 resurfacing of Tokay Boulevard that was delayed due to the redevelopment at the corner of Tokay and Midvale.

Street	Existing	Proposed
Project Type		Resurfacing
Last Surfaced	1956(Waite Cir); 1986(Tokay Blvd); 1999(Midvale Blvd)	
Pavement Rating(out of 10)	4 (Waite Cir); 5 (Tokay Blvd); 6 (Midvale Blvd)	
Curb Rating	8	
Width(Face to Face)	30' (Waite); 22' (Tokay); 32' (Midvale)	30' (Waite); 22' (Tokay); 34' (Midvale)
Surface Type	Asphaltic Surface	Asphaltic
Sidewalk	Existing	Proposed
	Existing sidewalk to remain	Replace Damaged Sections
Storm Sewer	Existing	Proposed
Work Required		rebuild inlets as needed, new storm on Midvale and Waite
Design Storm		10 Year
Size	Varies	Varies
Material	VP, RCP & HERCP	RCP
Year	1948 - 2000	2009
Sanitary Sewer	Existing	Proposed
Work Required		Spot repairs prior to this project starting on Midvale Blvd, no repairs needed on Tokay Blvd or Waite Cir
Size	8 - 10 inches	
Material	VP	
Year	varies 1948-1956	
Water Main	Existing	Proposed
Work Required		None

Parking	Existing	Proposed
Parking Conditions	Parking Allowed - Restrictions Vary	No Changes
Street Lighting	Existing	Proposed
Street Lighting	Wood poles at intersections	New Street Lighting on Midvale(Dan Dettmann to provide Info)
Cost		
Total Cost	\$2,715,150	
Assessments	\$158,150	
City of Madison	\$2,873,300	

Assessment Policy

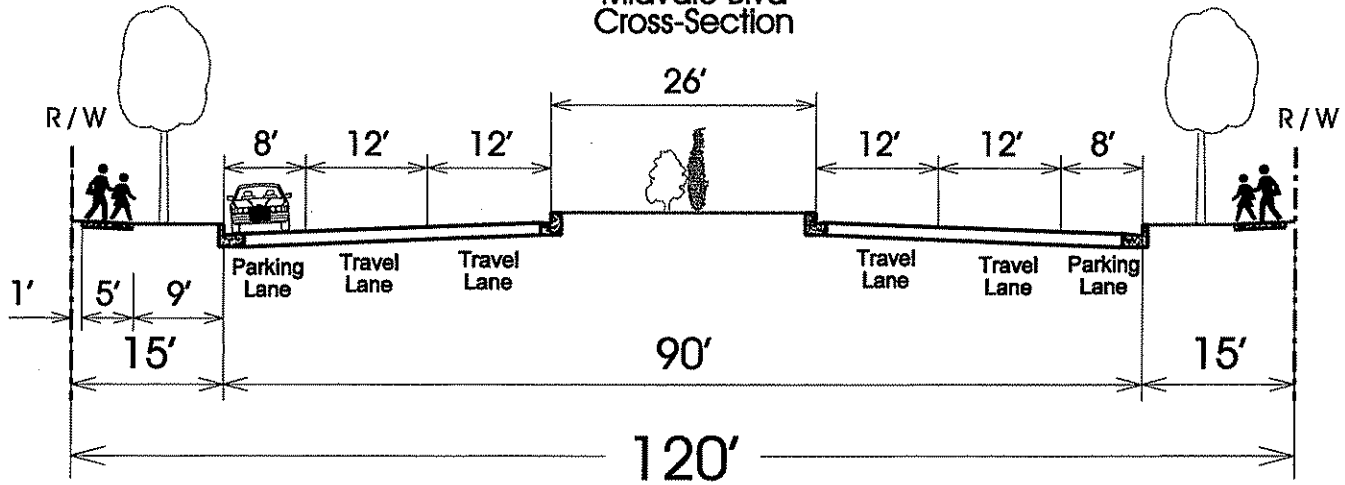
The cost of concrete items (curb & gutter, sidewalk and drive aprons) is assessed 50% to property owners with remaining 50% paid by the City.
The cost for Street Lighting is assessed 50% to property owner with remaining 50% paid by City.
Assessments are payable in one lump sum or over a period of 8 years, with 5% interest charged on unpaid balance.

Schedule

Start Date	End fo July
Project Duration	3 Months
Traffic Calming:	None proposed
Traffic Detours:	None proposed
Real Estate Requirements:	None
Tree Information:	Trimming as needed as noted in the assessment letter.
Rain Garden Information:	None proposed
Correspondence:	Several phone calls regarding assessments. Street lighting opposition letter from neighborhood association - provided Jean Sutter - corner of Midvale and Odana opposed to project and assessments
Assessment changes:	At the request of the property owner at 515 S Midvale Blvd. 95' of curb and gutter removal and replacment will be added to coordinate the work with the redevelopment that will be occurring.

Existing Midvale Blvd - Mineral Pt Rd to Nakoma Rd/Hammersley Rd vs. Proposed With Bike Lanes

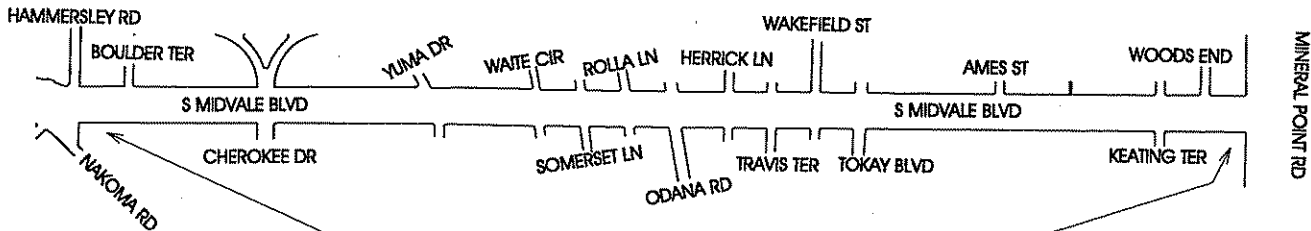
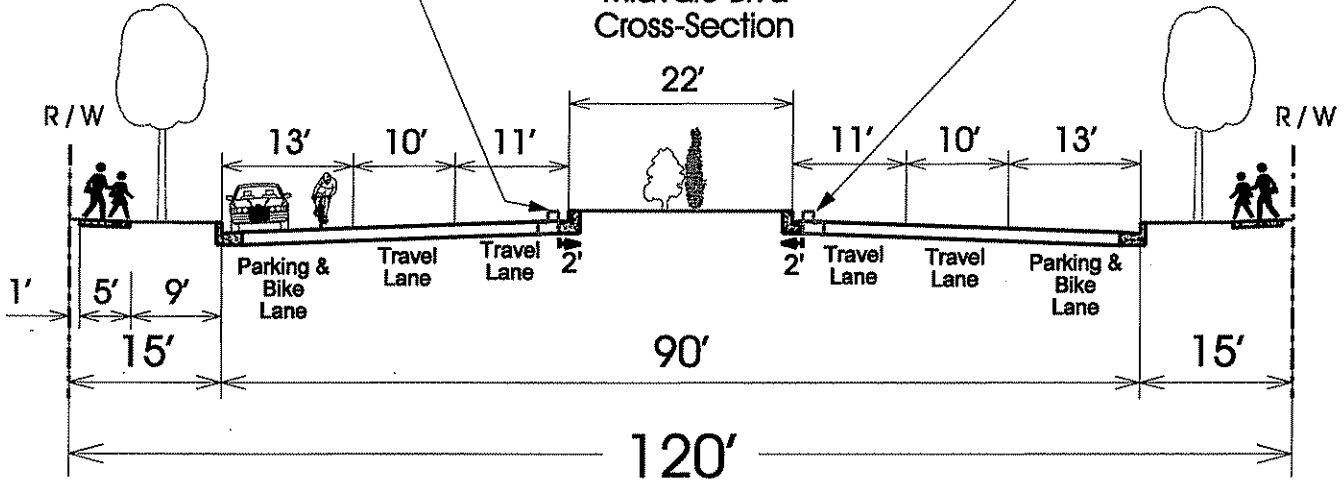
Existing (Typ.)
Midvale Blvd
Cross-Section



Proposed (Typ.)

Reduce median by 2' on each side (4' Total) to create space for bike lanes

Midvale Blvd
Cross-Section



2009 Midvale Blvd Project Limits

North

64

11.11.11

100

100

100

100