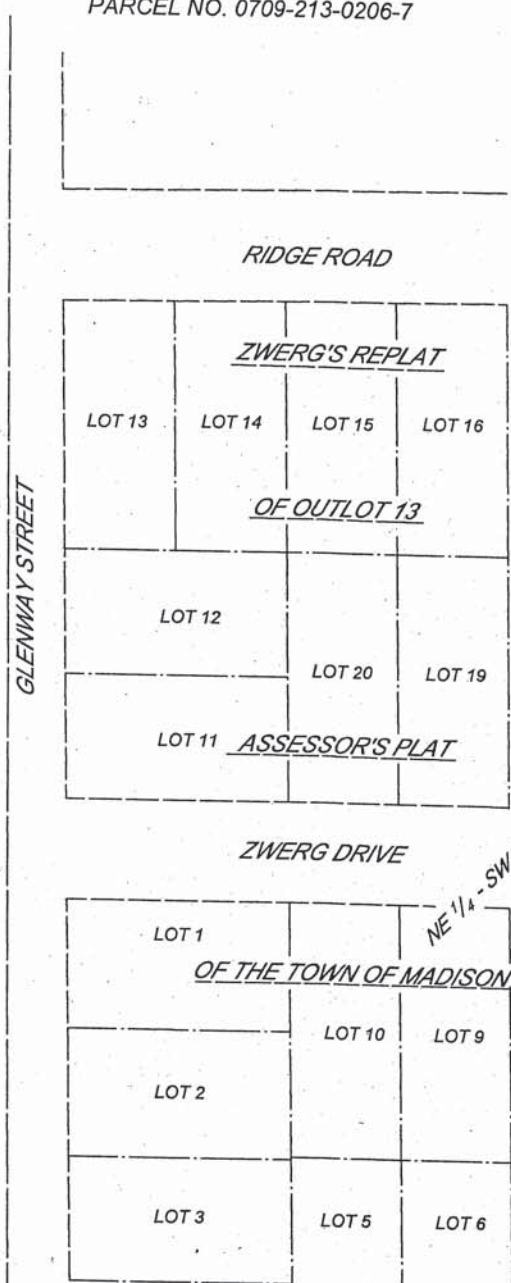
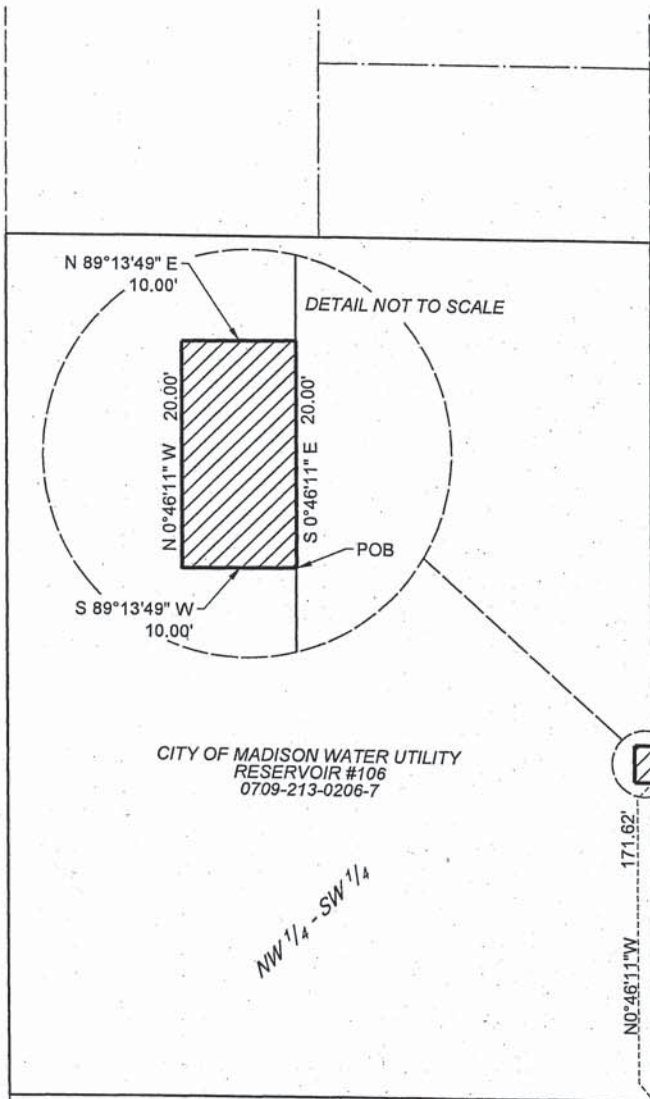


EASEMENT DESCRIPTION MAP (EXHIBIT "A")

GRANTEE: MADISON GAS AND ELECTRIC COMPANY
 133 SOUTH BLAIR ST
 MADISON, WI 53788

GRANTOR: CITY OF MADISON WATER UTILITY
 119 E OLIN AVE
 MADISON, WI 53713
 PARCEL NO. 0709-213-0206-7



LEGEND

SECTION LINE	_____
QUARTER LINE	_____
SIXTEENTH LINE	_____
RIGHT OF WAY LINE	_____
PROPERTY LINE	_____
MUNICIPAL BOUNDARY
OWNER'S PROPERTY LINE	_____
REFERENCE LINE OF TRANSMISSION LINE EASEMENT	_____
TRANSMISSION LINE EASEMENT	_____

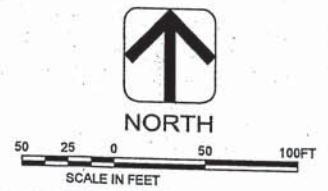
SECTION CORNER

MAP KEY

MG&E REGULATOR STATION #35 EASEMENT

TAX KEY 0709-213-0206-7 TOTAL AREA = 200 SF - 0.005 ACRES

CITY OF MADISON, DANE COUNTY



	AYRES ASSOCIATES 5201 EAST TERRACE DRIVE SUITE 200 MADISON, WI 53718 (608) 443-1200	NOTE: BEARINGS FOR THIS MAP ARE BASED ON THE STATE PLANE COORDINATE SYSTEM (WISCONSIN SOUTH ZONE) NAD83(2011). DISTANCES ARE GROUND.	Drawn: MCF / Ayres Associates
			Date: 6/28/2019
THIS DOCUMENT IS FOR THE USE OF MADISON GAS AND ELECTRIC COMPANY. MADISON GAS AND ELECTRIC COMPANY DISCLAIMS ALL WARRANTIES BOTH EXPRESS AND IMPLIED. USE BY ANYONE OTHER THAN MADISON GAS AND ELECTRIC COMPANY IS AT THEIR OWN RISK.		REVISIONS	Scale: 1" = 100'
			SHEET NUMBER 1