

STREET PLANT VALUE
 DOES NOT INCLUDE BITUMINOUS SURFACE
 WITH SIDEWALK

LINDEN PARK PHASE 7
 53B2205

STREET

Description	From	To	Quantity	Unit	Unit Cost	Total Cost
ANCIENT OAK LN 36FT WIDE MS LINK NO. 22671	WEST PLAT LINE	MOONLIGHT TRAIL	337	LF	\$ 92.22	\$ 31,078.59
ANCIENT OAK LN 36FT WIDE MS LINK NO. 22664	MOONLIGHT TRAIL	EAST LINE OF LOT 281	158	LF	\$ 92.22	\$ 14,570.97
MOONLIGHT TRAIL 28FT WIDE MS LINK NO. 24450	ANCIENT OAK LN	NORTH LINE OF LOT 263	384	LF	\$ 71.73	\$ 27,543.44
GRAND TOTAL COST						\$ 73,193.00

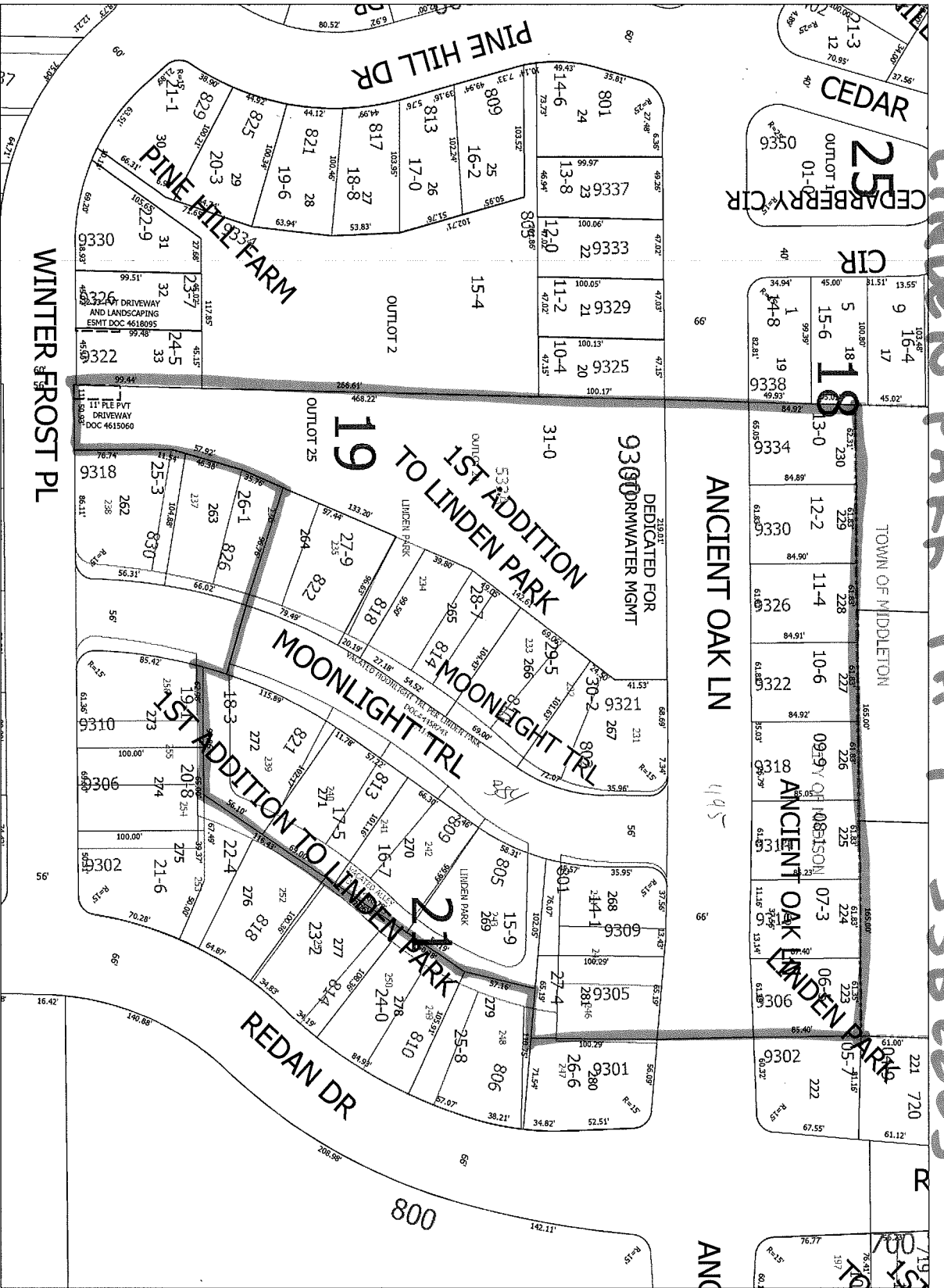
TOTAL STREET IMPROVEMENTS \$ 97,613.00

Prepared By: JD

Date: 3/7/2012

t:\eroot\priv_contract\finalization\schedule a\streets\2205 Street excluding bituminous Schedule A.xls

LINDEN PARK PH 7 53B2205



Time: 03/07/12 11:25:08

Session: C:\GTViewer_Sessions\janet.gts

City of Madison, WI - GIS/Mapping data

Printed By: enjisd

Disclaimer: The City makes no representation about the accuracy of these records and shall not be liable for any damages