

# *High Point-Raymond*

Neighborhood Development Plan Update  
February 23, 2017 LRTPC-PC Work session











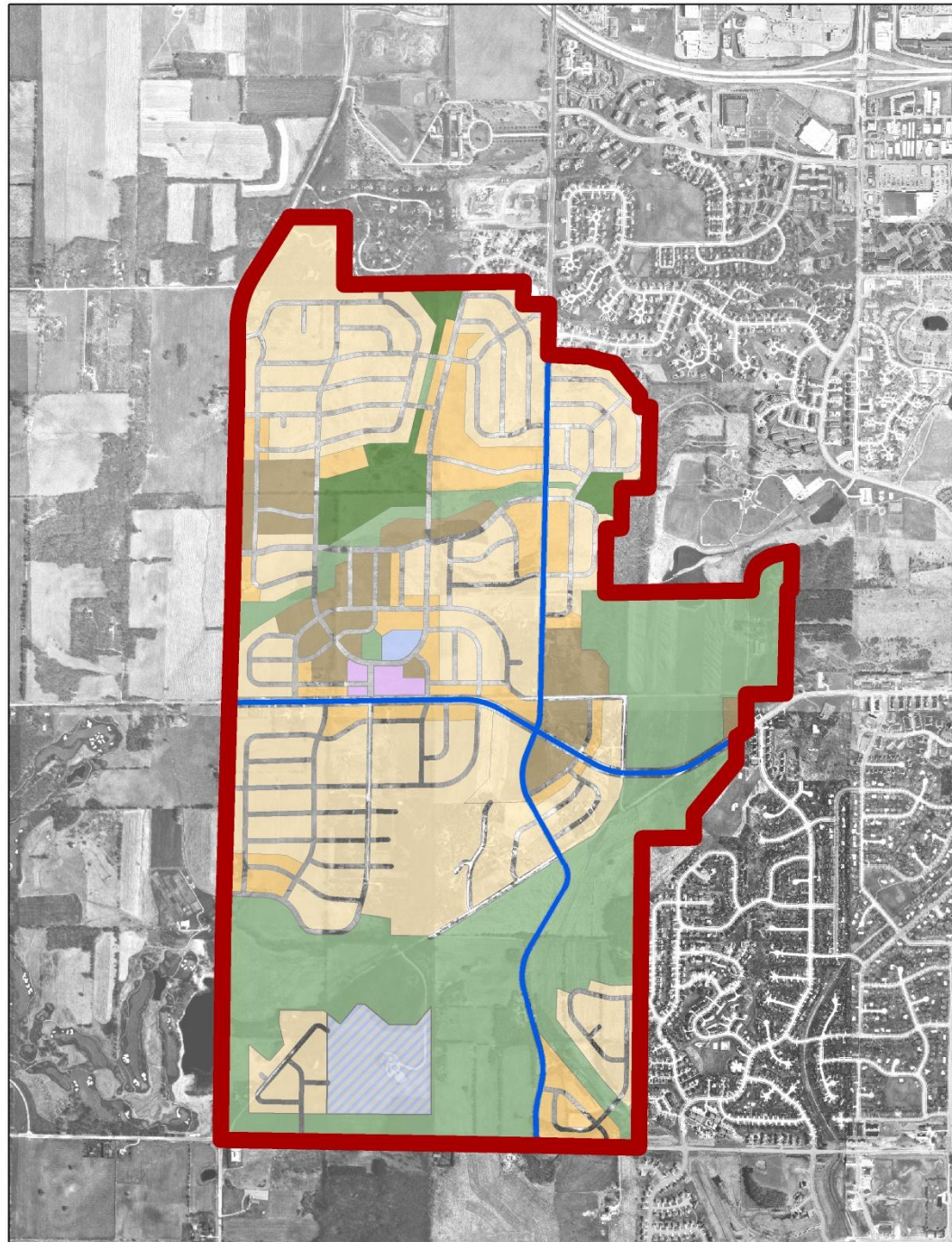
# High Point-Raymond

## Plan Background

- 1997 Plan Adoption
  - Predominately residential use
  - Open Space Corridor Ice Age Trail

### Adopted Land Uses

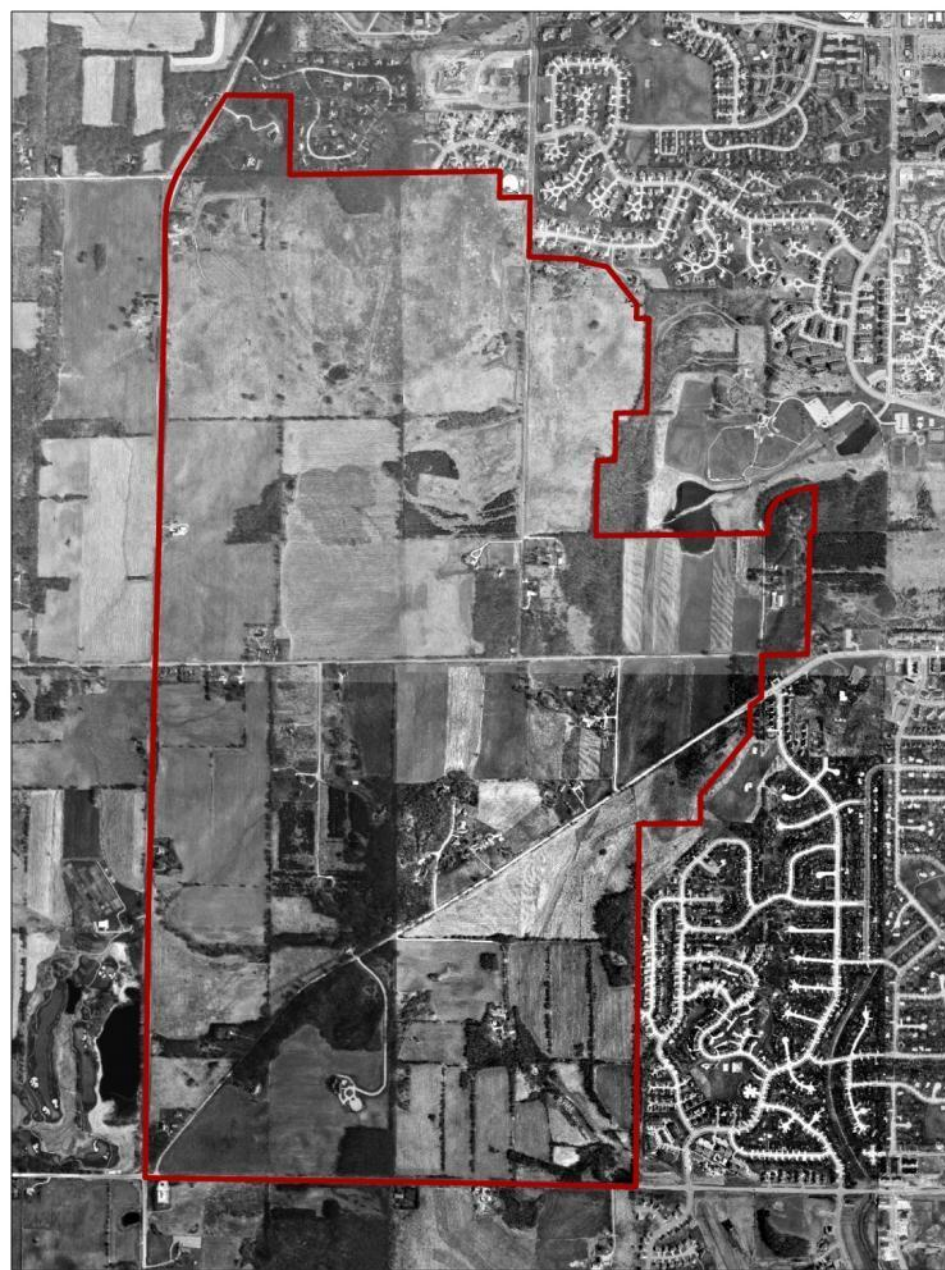
-  Town Center Mixed Use
-  Low Density Residential
-  Low-Medium Density Residential
-  Medium Density Residential
-  Institutional
-  Institutional Mixed Use Area
-  Park
-  Open space



# High Point-Raymond

## Why Update?

- One of Madison's oldest neighborhood development plans
- 500 acres remain undeveloped
- Significant changes have occurred since 1997
  - Growth in neighborhood
  - Increased residential demand
  - Change in housing preferences



Map 1:  
Planning Area

High Point - Raymond  
Neighborhood Development Plan  
Amendment  
October 30 16

City of Madison Planning Division

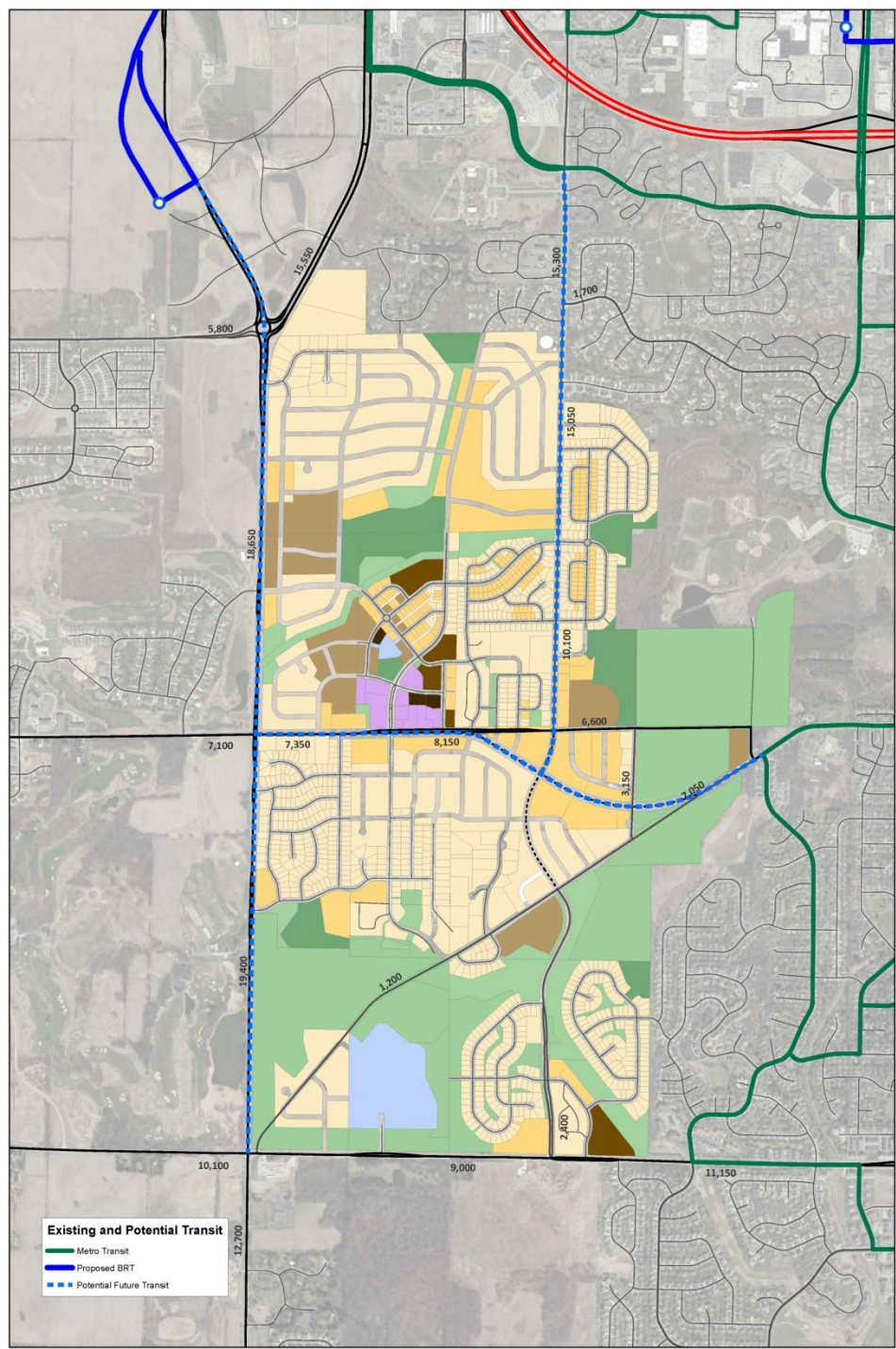
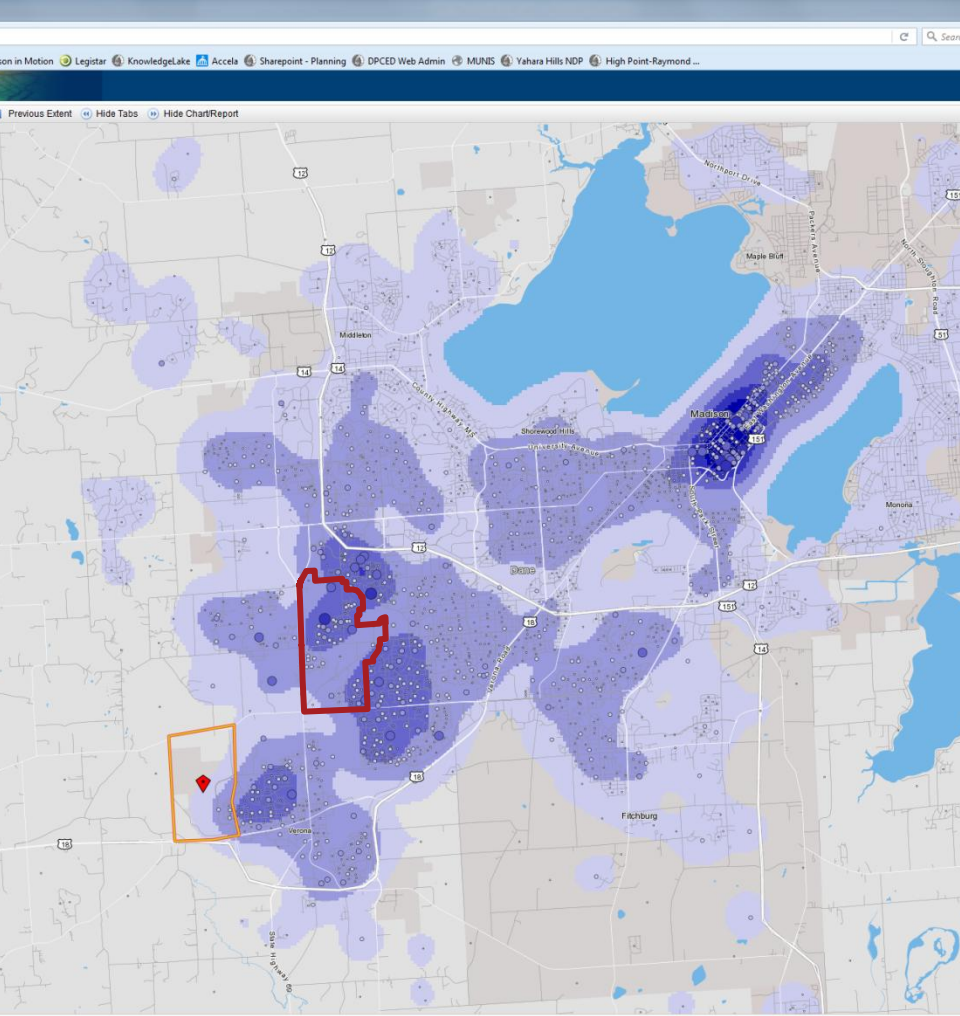
- Planning Area
- ⋯ Township Boundary
- ▭ City of Madison Boundary

1997



# High Point-Raymond

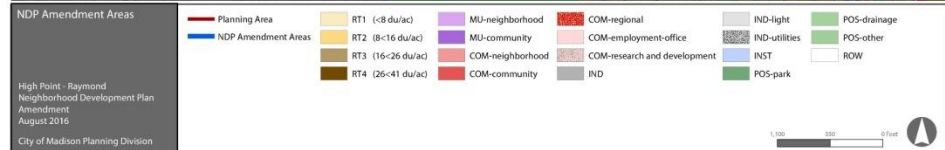
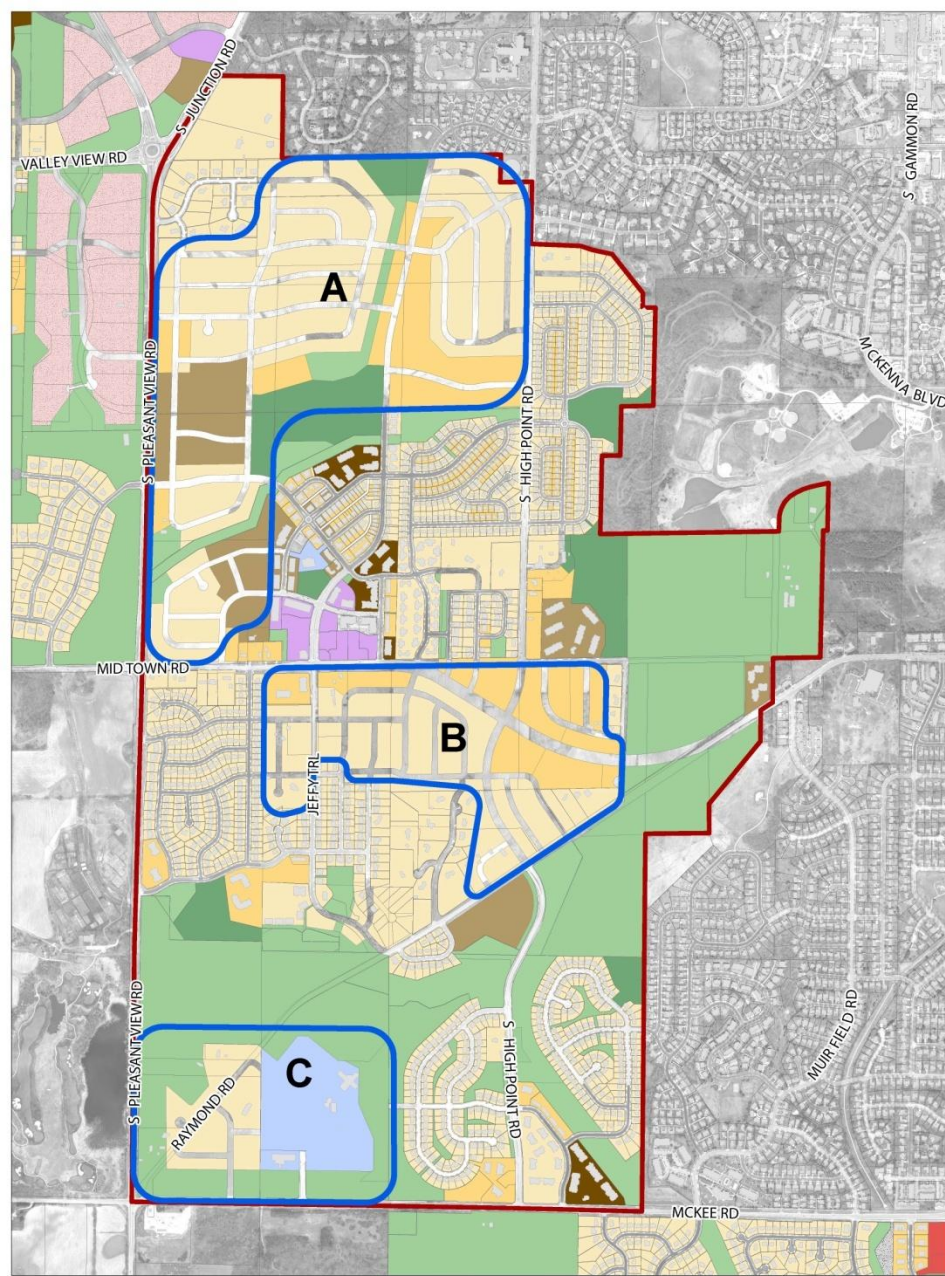
## Why Update?



# High Point-Raymond

## Update Focus Areas

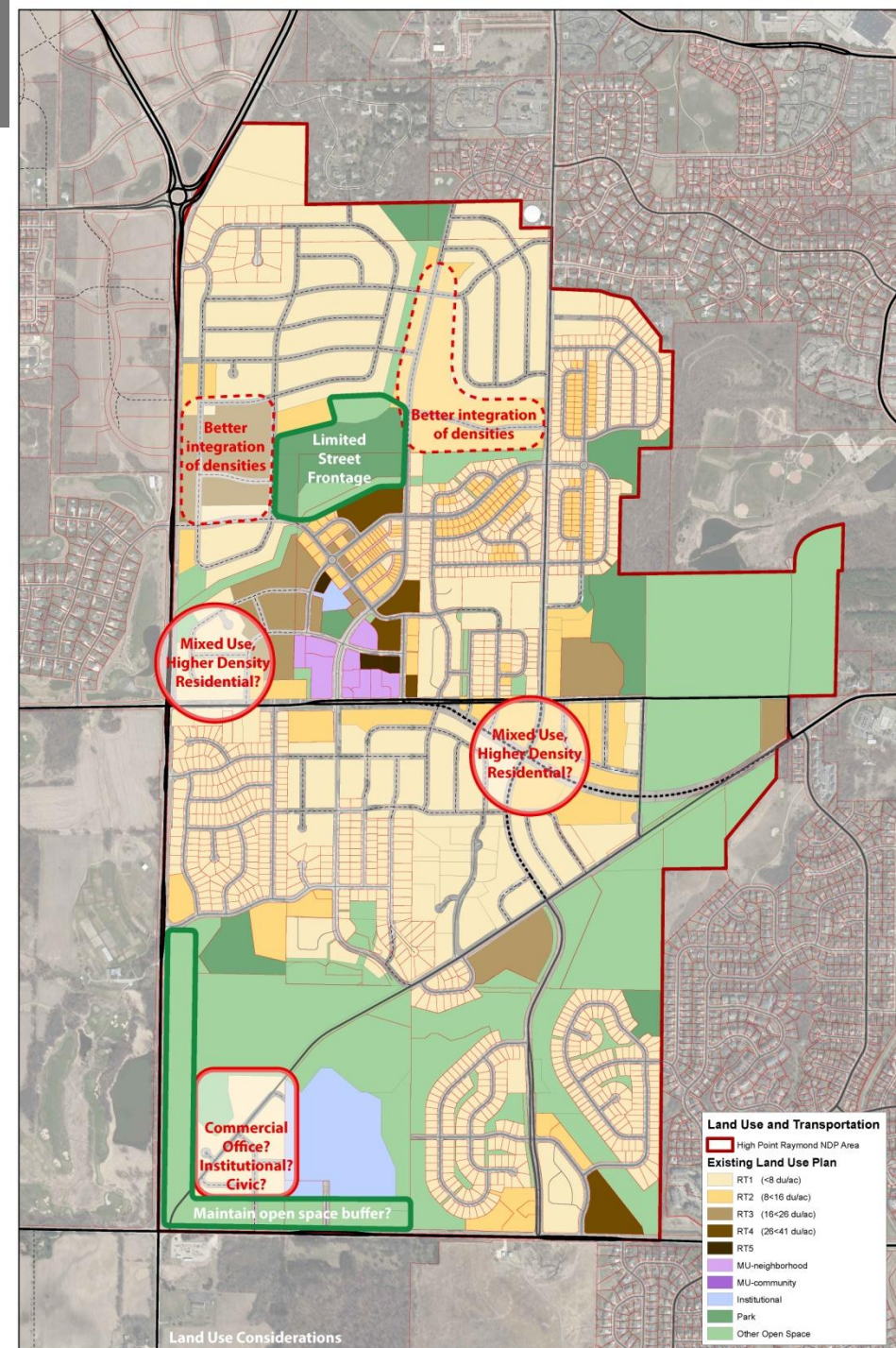
- Evaluate and recommend changes to the areas:
  - Uses/housing mix
  - Street layout
  - Parks
  - Identify potential stormwater management, drainage locations
  - Transit and bike facilities



# High Point-Raymond

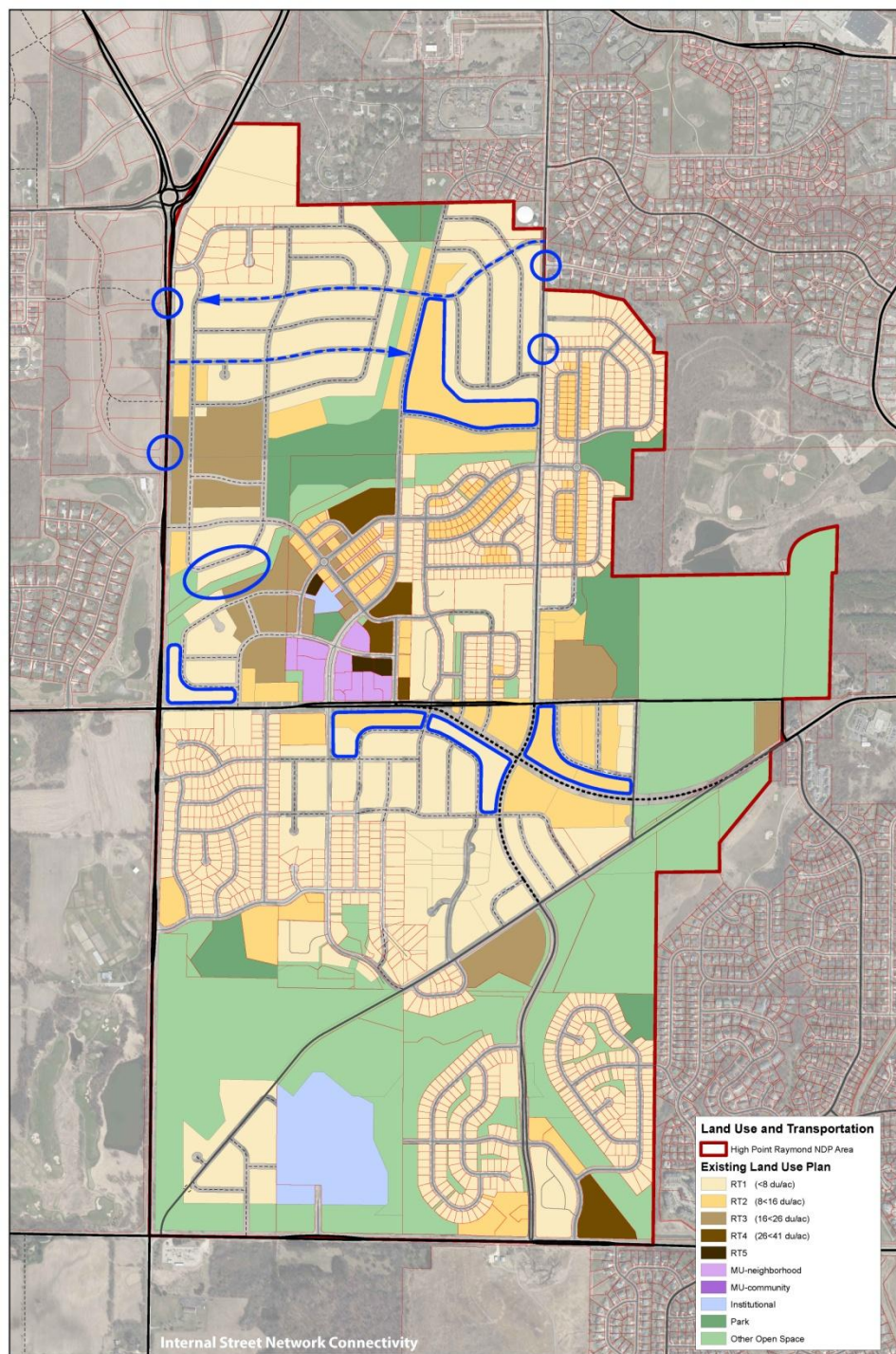
## Land Use Updates

- Intersection of Pleasant View and Midtown
- Intersection High Point and Midtown/Raymond
- North Neighborhood
  - Location and separated nature of densities
  - “Backyard” park
- Pleasant View and McKee (Five Points)



# High Point-Raymond

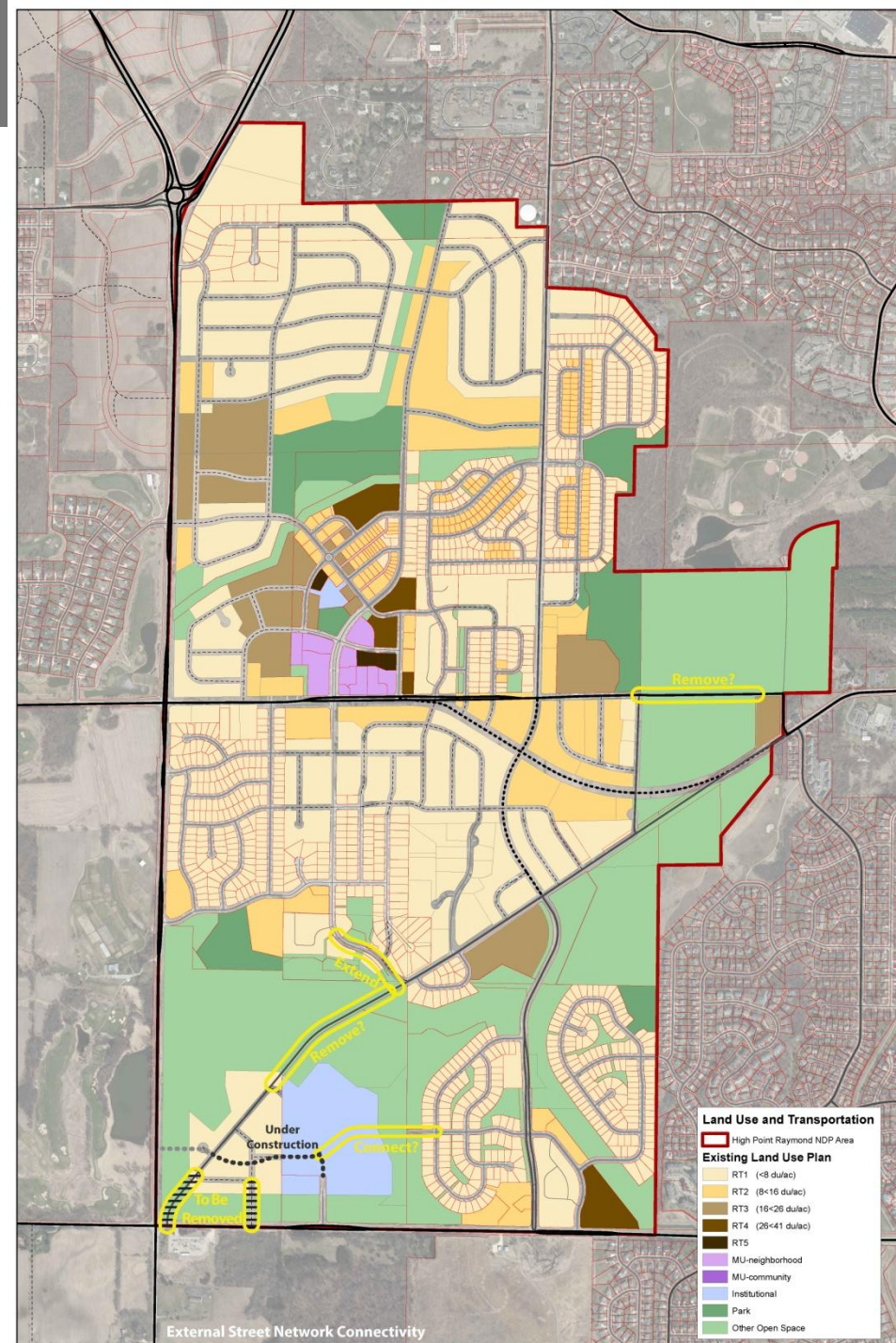
## Internal Street Network



# High Point-Raymond

## Transportation Issues

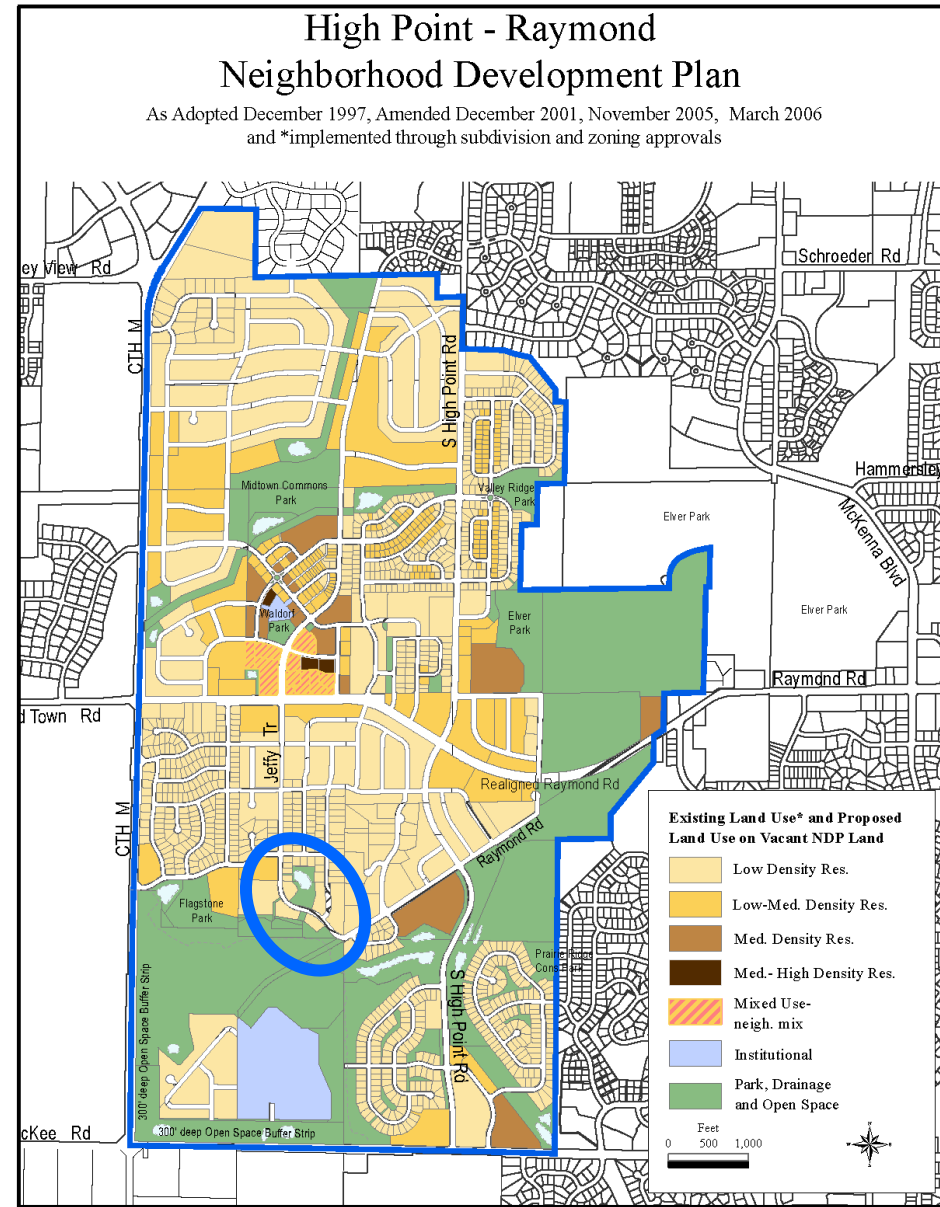
- Jeffy Trail
- Raymond Road @ Ice Age Trail and Five Points
- Wellness Way/Stratton Way
- Midtown east of Marty Rd



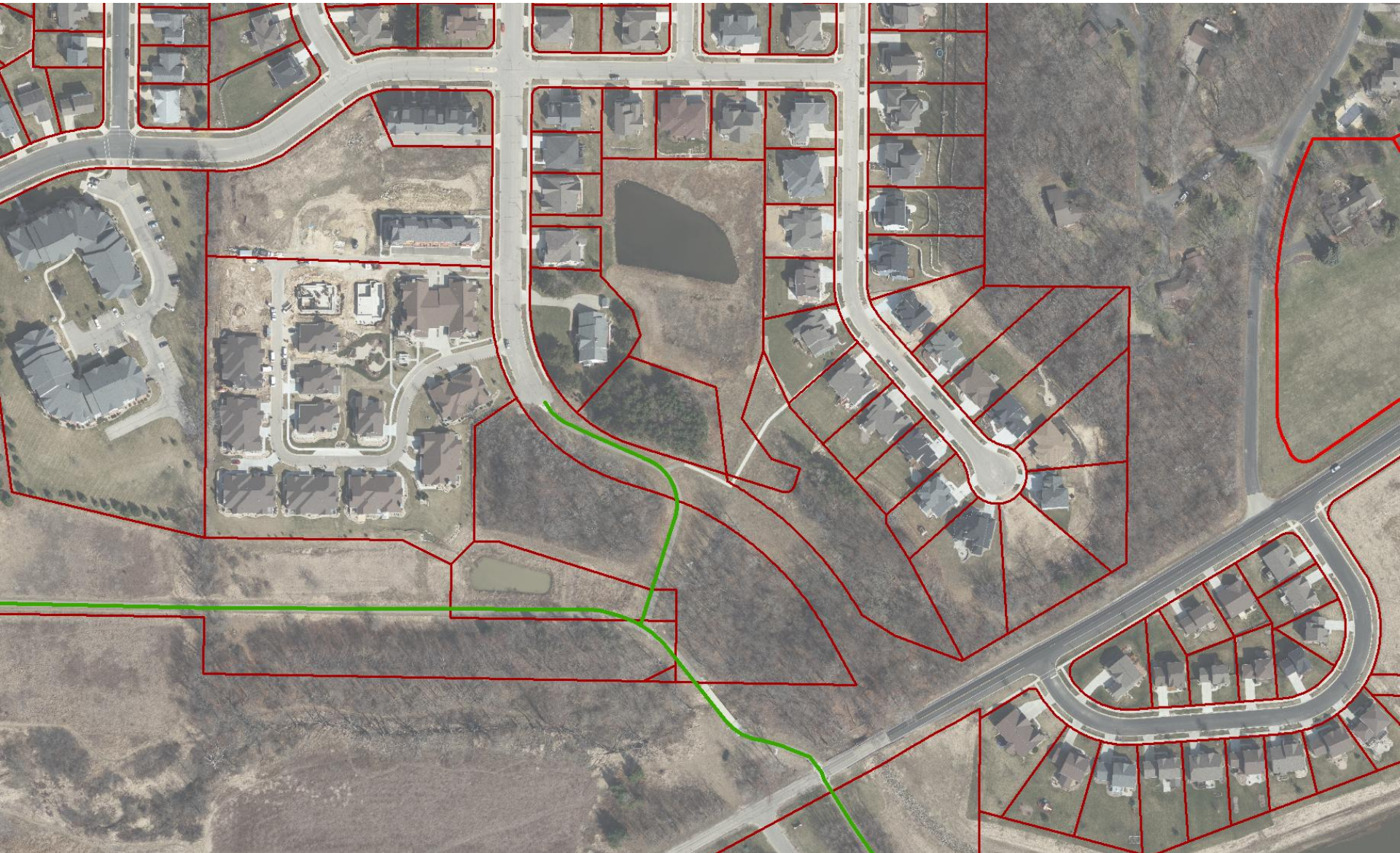


### Jeffy Trail

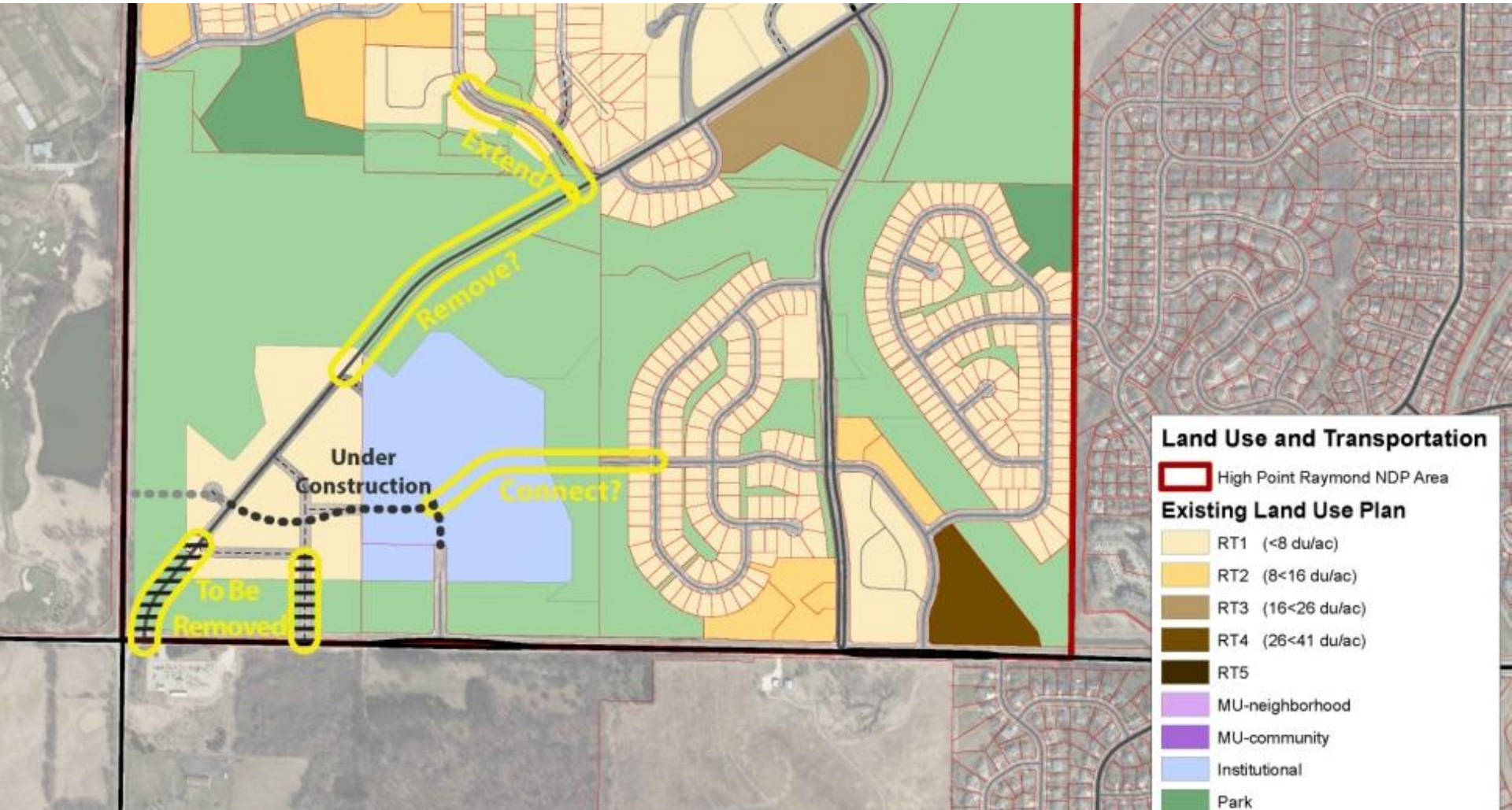
- Connection to Raymond Rd adopted in 2005
- Hawks Creek 2<sup>nd</sup> Addition plat approval in 2007
- City acquired land in 2012 for street and utility improvements
- Plat approved in 2013
- Had been included in previous draft capital budgets
- Closure of Raymond at 5 Points prior to Jeffy connection



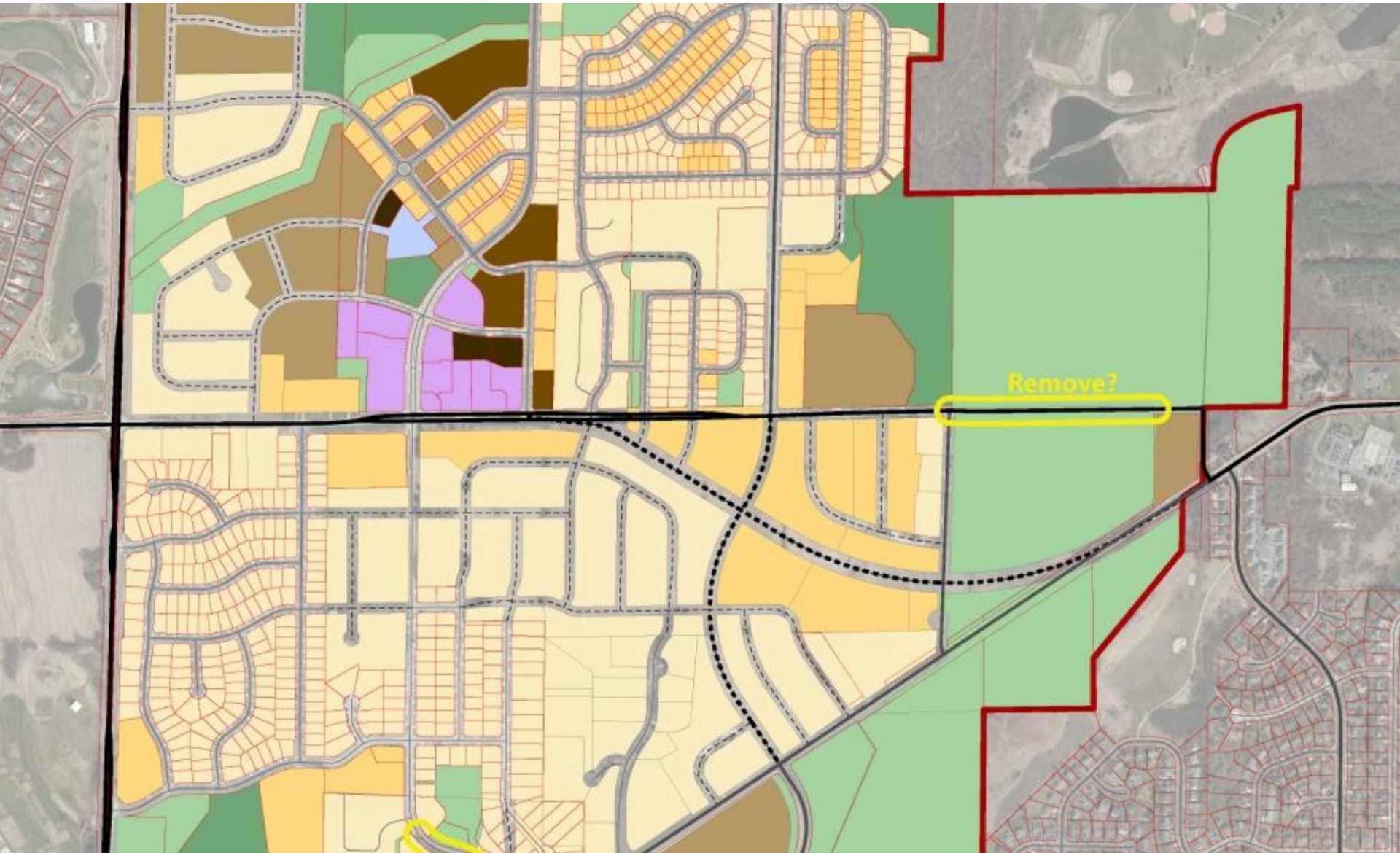
## Jeffy Trail



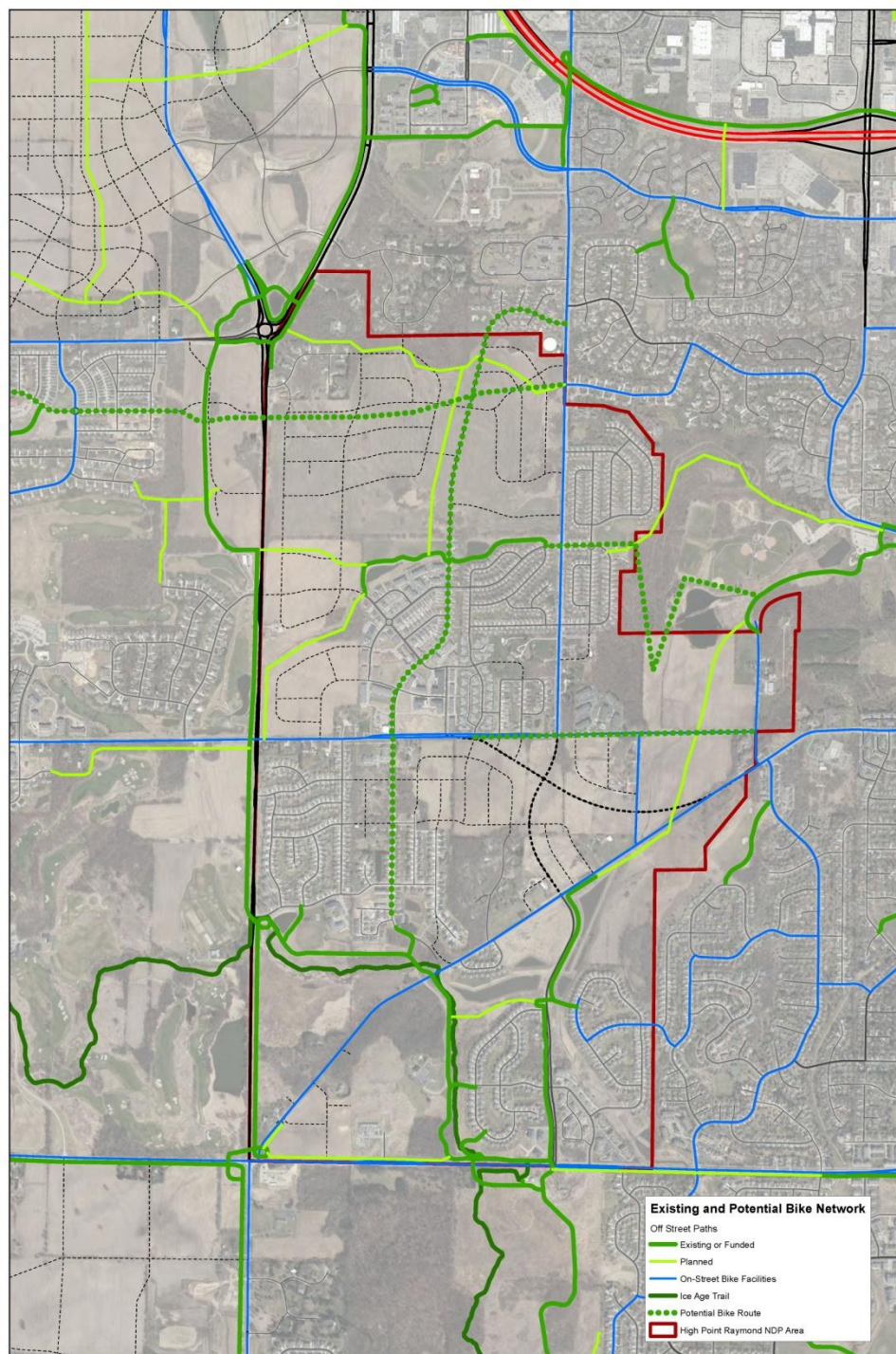
## Transportation Issues



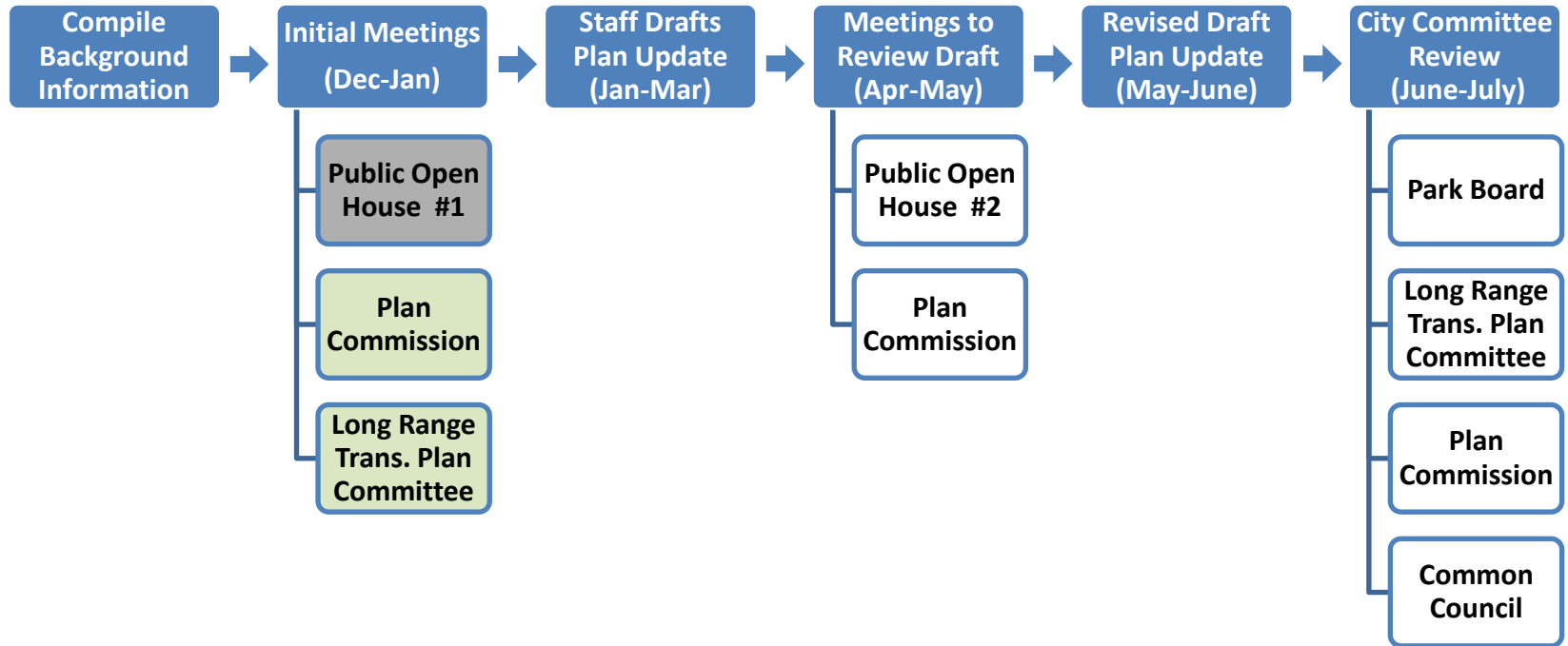
## Transportation Issues



# High Point-Raymond Bike Connections



### Timeline



**Questions? Comments?**

Dan McAuliffe

261-9676

[dmcauliffe@cityofmadison.com](mailto:dmcauliffe@cityofmadison.com)

[www.cityofmadison.com/HighPointRaymond](http://www.cityofmadison.com/HighPointRaymond)