

NOTICE: These documents are instruments of professional service, and information contained therein is incomplete unless used in conjunction with Lantz-Boggio's interpretations, decisions, observations and administrations. Use or reproduction of these documents in whole or in part without Lantz-Boggio's consent is in violation of common law, copyright, statutory and other reserved rights. Refer to Act 17 U.S.C., par. 511 (1991), which preempts state and local public records act. Refer to Act 17 U.S.C., par. 301 (1991).

BrightStar Assisted Living
 Madison | Wisconsin

Owner:
 BRIGHTSTAR GROUP HOLDINGS
 1125 TRI-STATE PARKWAY, SUITE 700
 GURNEE, IL 60031
 P: 847.693.2007
 JAYSON PEARL

Structural Engineer:
 JIRSA HEDRICK & ASSOCIATES
 7000 EAST BELLEVUE AVENUE
 ENGLEWOOD, CO 80111
 P: 303.839.1963
 STEVE JIRSA

Electrical Engineer:
 JCAA CONSULTING ENGINEERS LLC
 13772 DENVER WEST PARKWAY, SUITE 200
 LAKEWOOD, CO 80401
 P: 303.985.3260
 F: 303.987.2304
 JERRY ALBER

Mechanical/Plumbing Engineer:
 GIVEN & ASSOCIATES, INC.
 735 S. XENON CT., SUITE 201
 LAKEWOOD, CO 80228
 P: 303.716.1270
 F: 303.716.1272
 JEFF GIVEN

Civil Engineer:
 LYNCH & ASSOCIATES
 5482 WESTRIDGE DRIVE
 NEW BERLIN, WI 53151
 P: 262.402.5040
 TIMOTHY LYNCH

Landscape Architect:
 THE BRUCE COMPANY
 2830 PARMENTER STREET
 P.O. BOX 620330
 MIDDLETON, WI 53562
 P: 608.836.7041
 DANA PETIT

Issued For:

Item	Date	Description
1.	04.04.2012	Madison Planning Department Sub.
2.	04.11.2012	Urban Design Commission Sub.
3.	04.25.2012	Urban Design Comm. Sub. - Initial/Final Approval

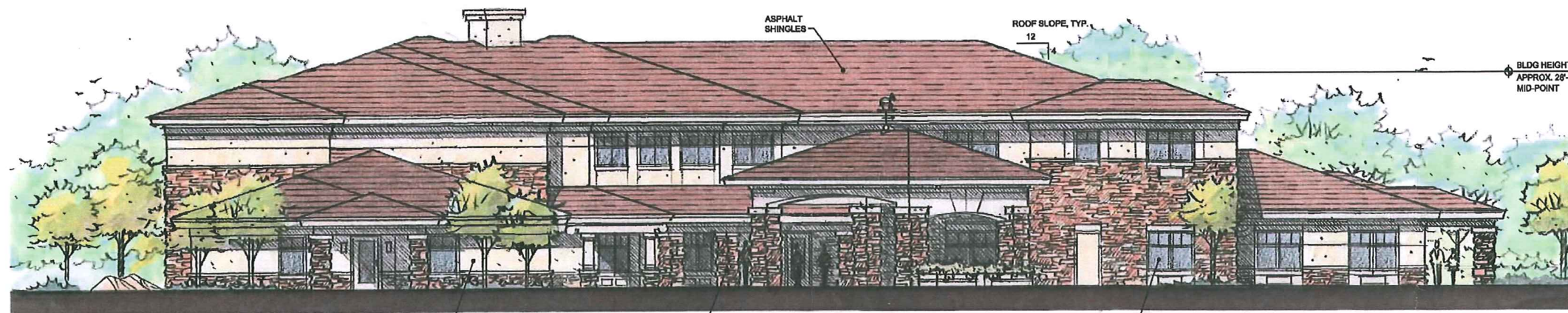
Seal:

Key Plans:

LBA Project Number: 2011.46
 Date: APRIL 26, 2012

EXTERIOR ELEVATIONS

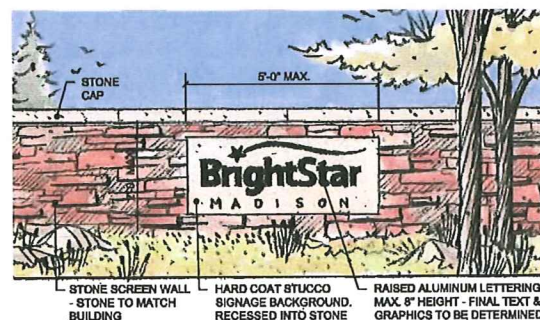
A-401



PORTE COCHERE BUILDING ELEVATION
 1/8" = 1'-0" 10 APRIL 2012



SCHROEDER SIDE BUILDING ELEVATION
 1/8" = 1'-0" 10 APRIL 2012 REV 25 APRIL 2012



BUILDING SIGNAGE ELEVATION



STRUCK SIDE BUILDING ELEVATION
 1/8" = 1'-0" 10 APRIL 2012 REV 25 APRIL 2012