

ANCHOR PROPERTIES REDEVELOPMENT



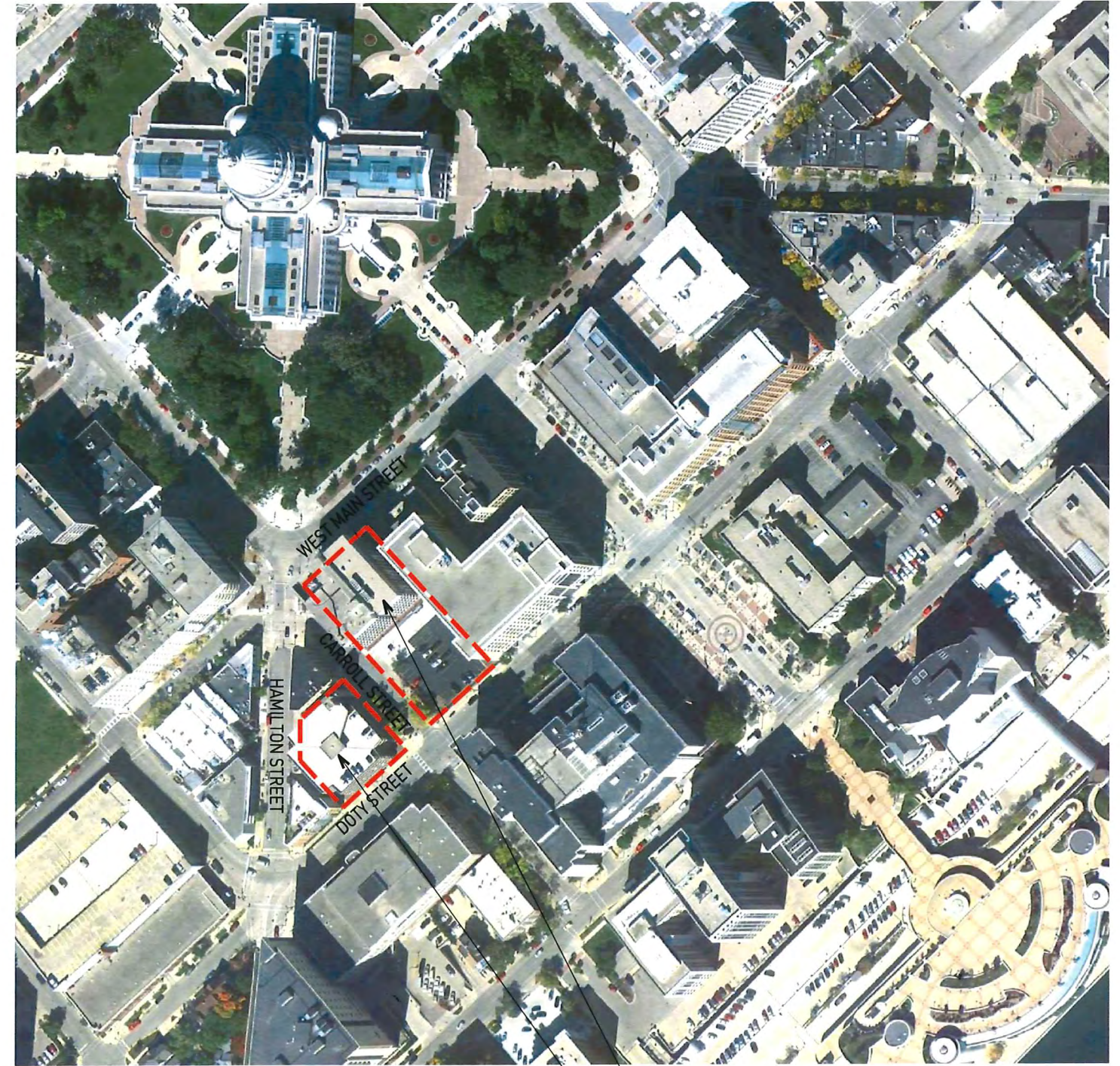
Urban Land Interests

URBAN DESIGN COMMISSION SUBMISSION: 04 MARCH 2015

AREA MAP



LOCATION MAP



25 WEST MAIN STREET
(PREVIOUSLY APPROVED)

115 SOUTH HAMILTON STREET



ANCHOR PROPERTIES REDEVELOPMENT

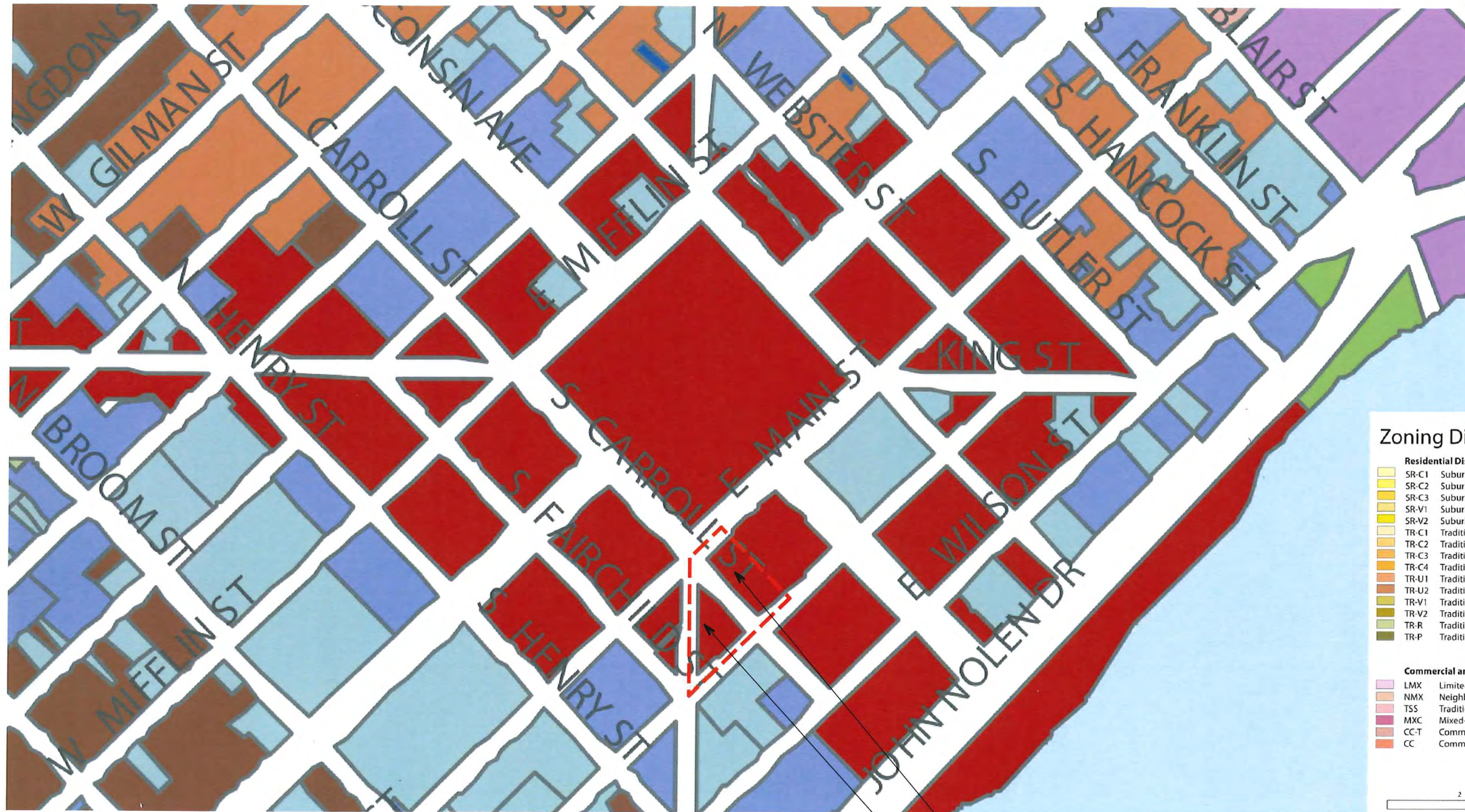
MARCH 4, 2015



Urban Land Interests

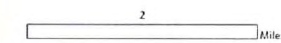


ZONING MAP



Zoning Districts

- | | |
|---|---|
| Residential Districts | Employment Districts |
| SR-C1 Suburban Residential - Consistent District 1 | TE Traditional Employment District |
| SR-C2 Suburban Residential - Consistent District 2 | SE Suburban Employment District |
| SR-C3 Suburban Residential - Consistent District 3 | SEC Suburban Employment Center District |
| SR-V1 Suburban Residential - Varied District 1 | EC Employment Campus District |
| SR-V2 Suburban Residential - Varied District 2 | IL Industrial - Limited District |
| TR-C1 Traditional Residential - Consistent District 1 | IG Industrial - General District |
| TR-C2 Traditional Residential - Consistent District 2 | |
| TR-C3 Traditional Residential - Consistent District 3 | Downtown and Urban Districts |
| TR-C4 Traditional Residential - Consistent District 4 | DC Downtown Core District |
| TR-U1 Traditional Residential - Urban District 1 | UOR Urban Office Residential District |
| TR-U2 Traditional Residential - Urban District 2 | UMX Urban Mixed Use District |
| TR-V1 Traditional Residential - Varied District 1 | DRI Downtown Residential 1 |
| TR-V2 Traditional Residential - Varied District 2 | DR2 Downtown Residential 2 |
| TR-R Traditional Residential - Rustic District | |
| TR-P Traditional Residential - Planned District | Special Districts |
| | A Agricultural District |
| Commercial and Mixed-Use Districts | UA Urban Agricultural District |
| LMX Limited Mixed Use District | CN Conservancy District |
| NMX Neighborhood Mixed Use District | PR Parks and Recreation District |
| TSS Traditional Shopping Street District | AP Airport District |
| MXC Mixed-Use Center District | CI Campus Institutional District |
| CC-T Commercial Corridor - Transitional District | PD Planned Development District |
| CC Commercial Center District | PMHP Planned Mobile Home Park District |



Prepared by the City of Madison Planning, Vision and Zoning Staff | December 2013

25 WEST MAIN STREET
(PREVIOUSLY APPROVED)

115 SOUTH HAMILTON STREET

ANCHOR PROPERTIES REDEVELOPMENT

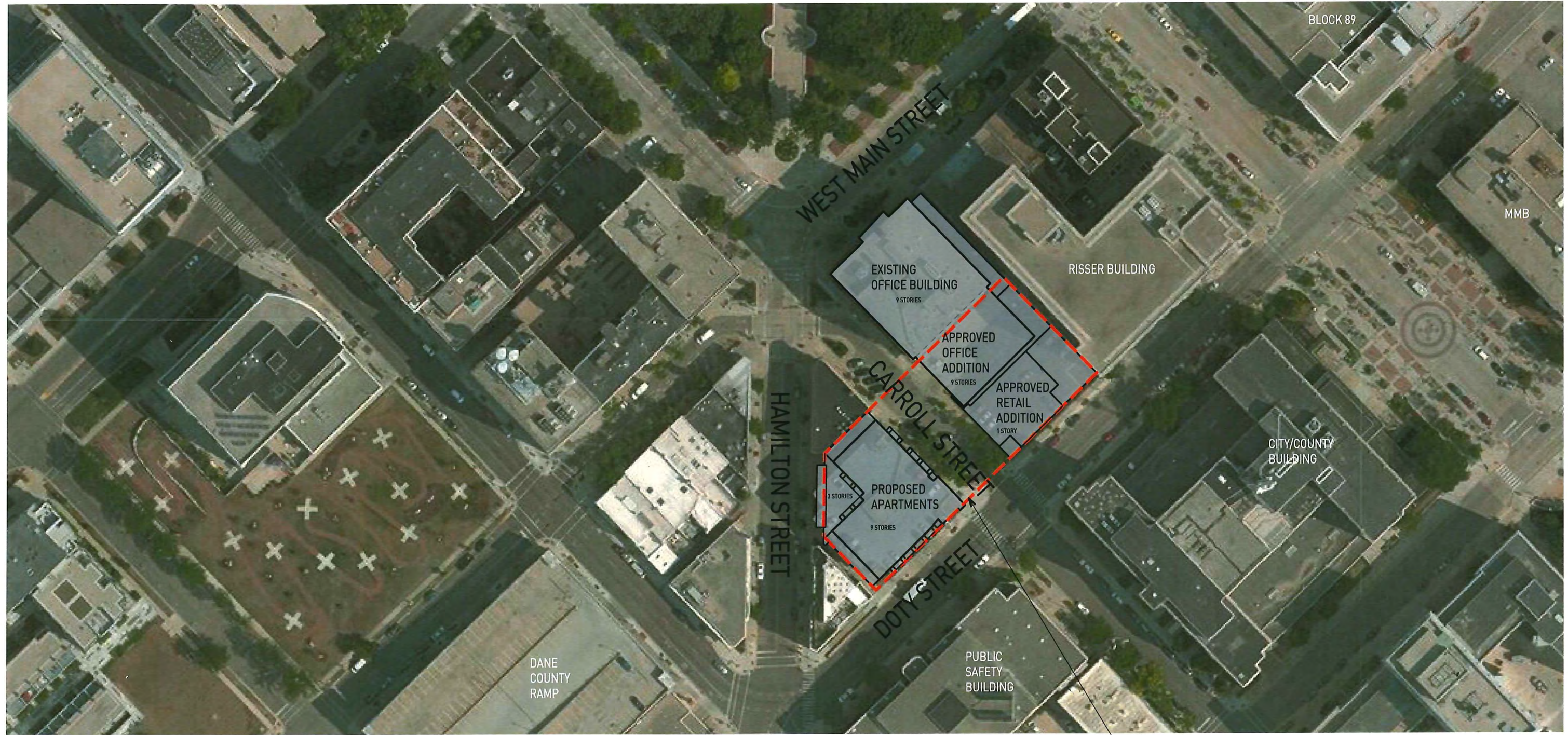
MARCH 4, 2015



Urban Land Interests



AERIAL VIEW



EXTENT OF APPROVED UNDERGROUND PARKING GARAGE



ANCHOR PROPERTIES REDEVELOPMENT

MARCH 4, 2015



Urban Land Interests



CONTEXT PLAN



ANCHOR PROPERTIES REDEVELOPMENT

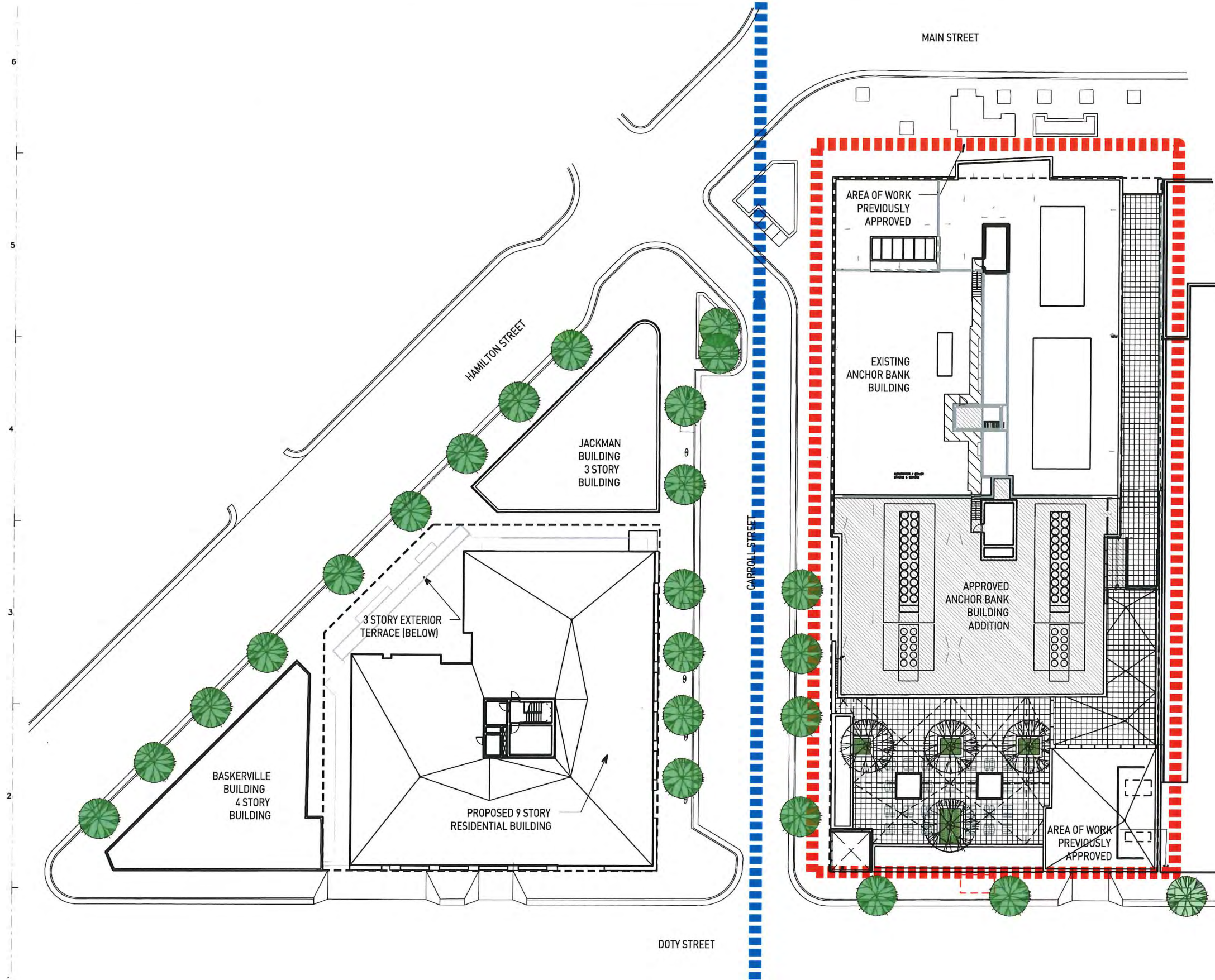
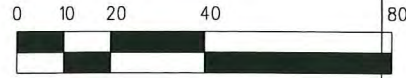
MARCH 4, 2015



Urban Land Interests



SITE PLAN



ANCHOR PROPERTIES REDEVELOPMENT

MARCH 4, 2015



Urban Land Interests



CONTEXT PHOTOS



VIEW 1



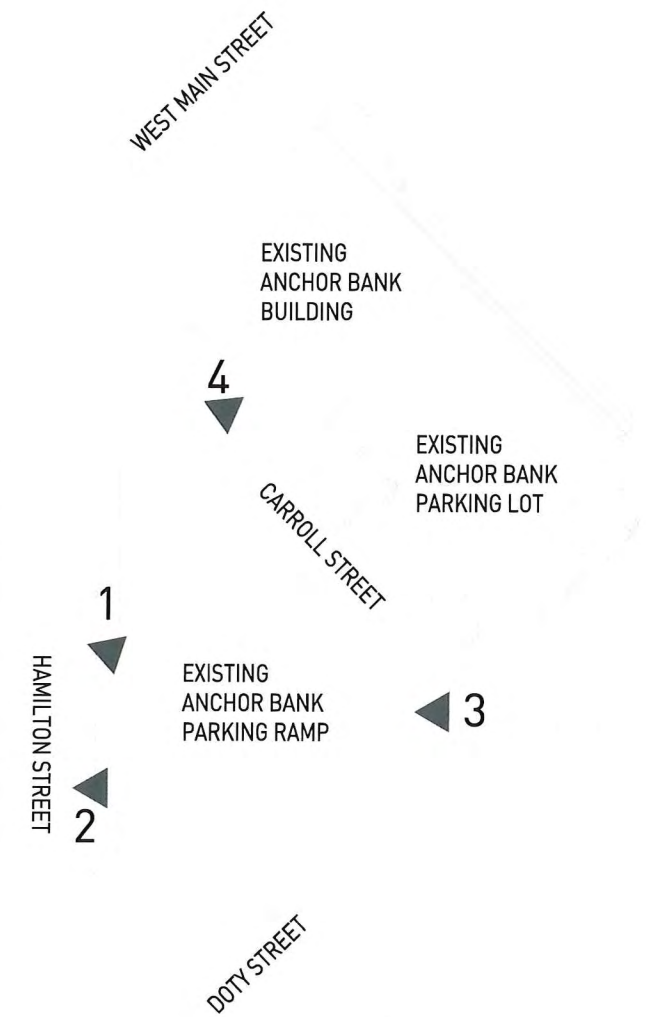
VIEW 2



VIEW 4



VIEW 3



CONTEXT PHOTOS



VIEW 1



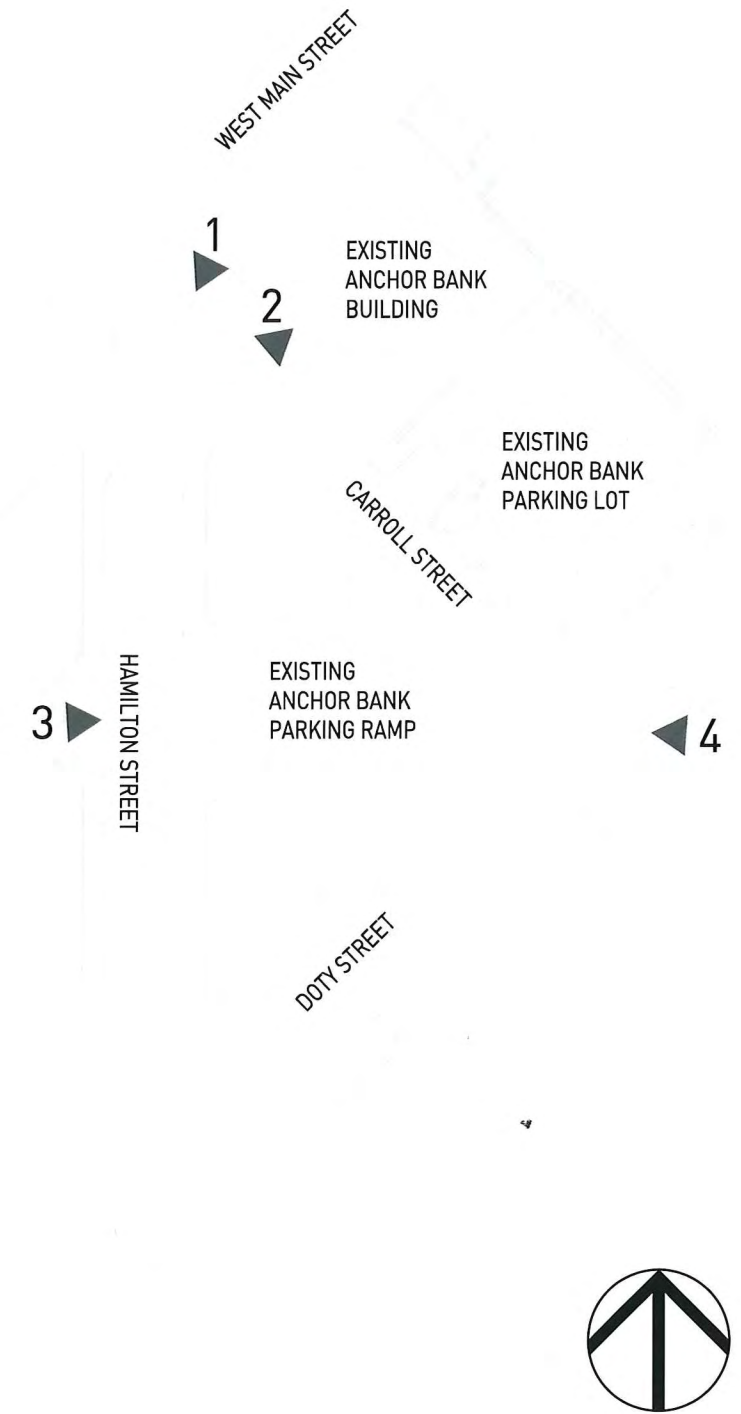
VIEW 2



VIEW 3



VIEW 4



CONTEXT PHOTOS



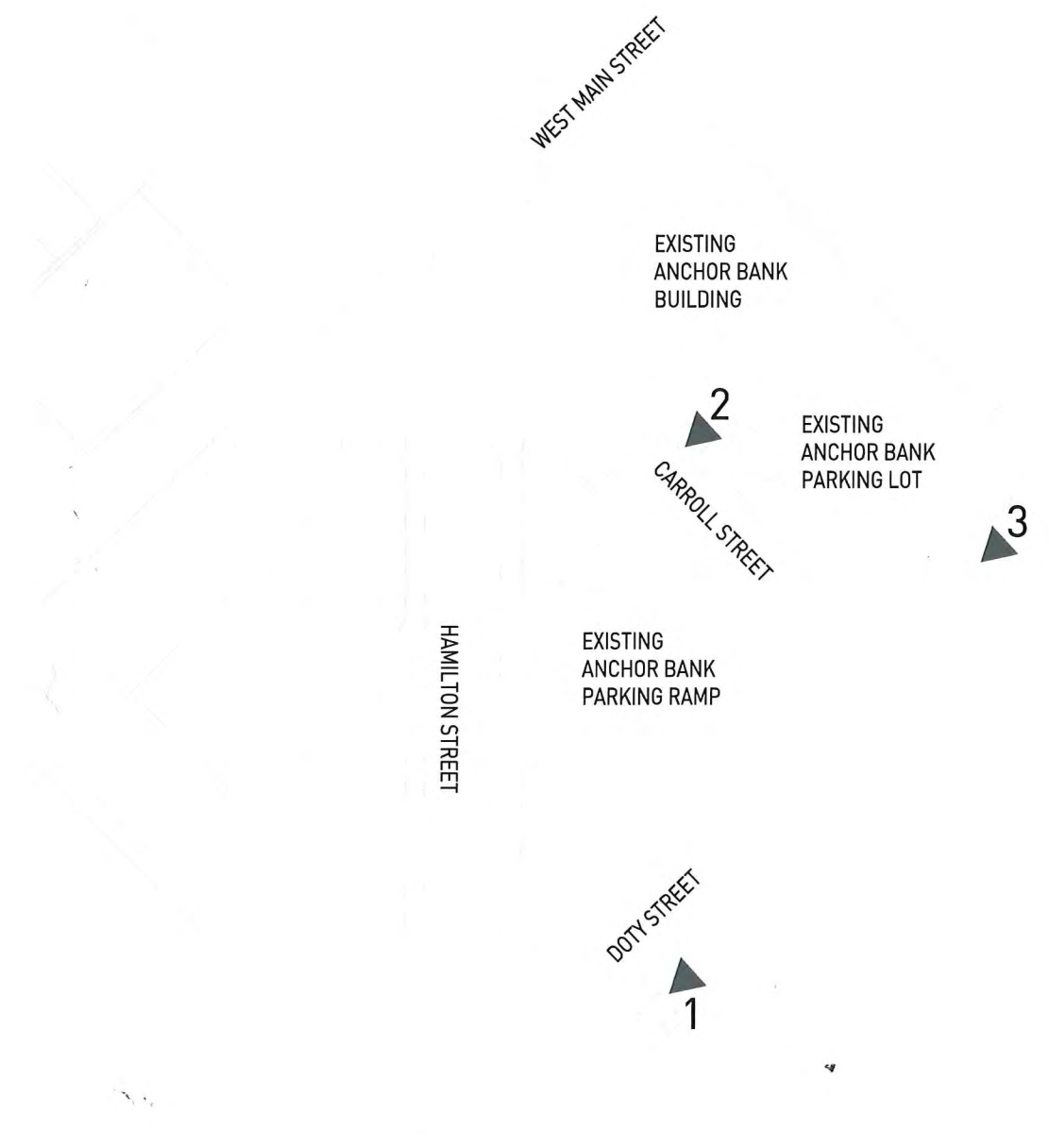
VIEW 1



VIEW 2



VIEW 3



ANCHOR PROPERTIES REDEVELOPMENT

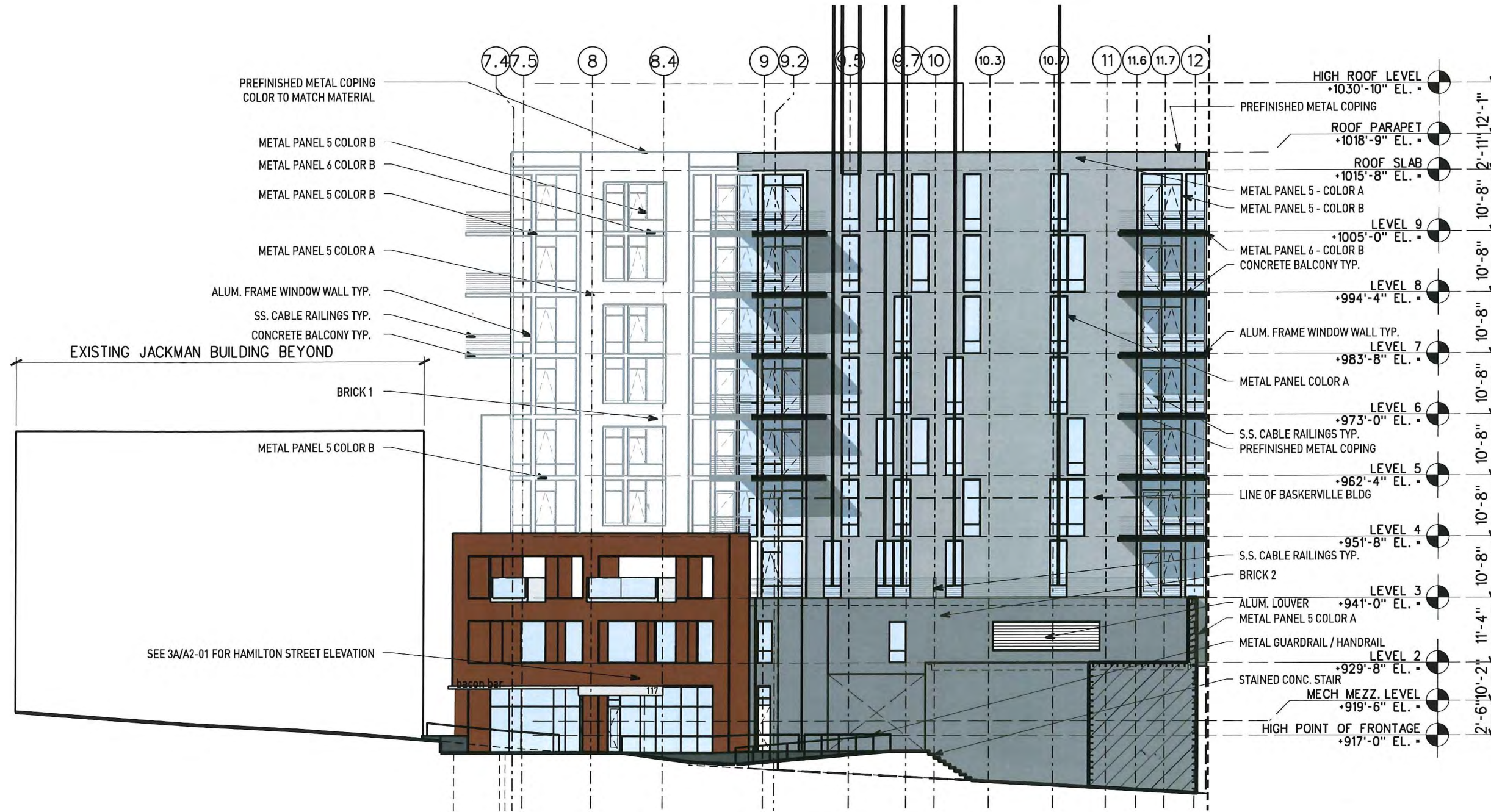
MARCH 4, 2015



Urban Land Interests



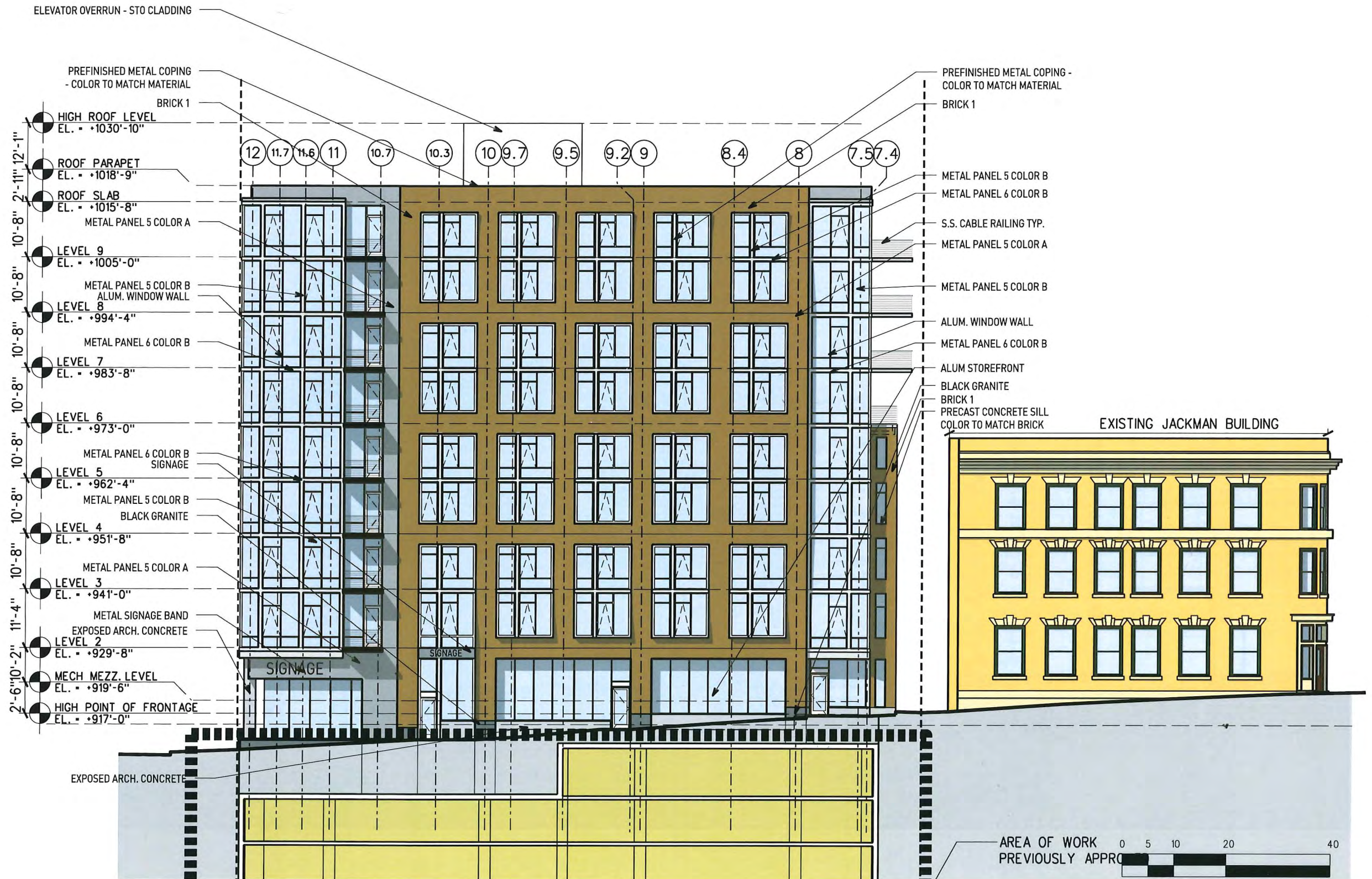
RESIDENTIAL ELEVATION - WEST ABOVE BASKERVILLE BUILDING



RESIDENTIAL ELEVATION - NORTH ABOVE JACKMAN BUILDING



RESIDENTIAL ELEVATION - EAST CARROLL STREET



ANCHOR PROPERTIES REDEVELOPMENT

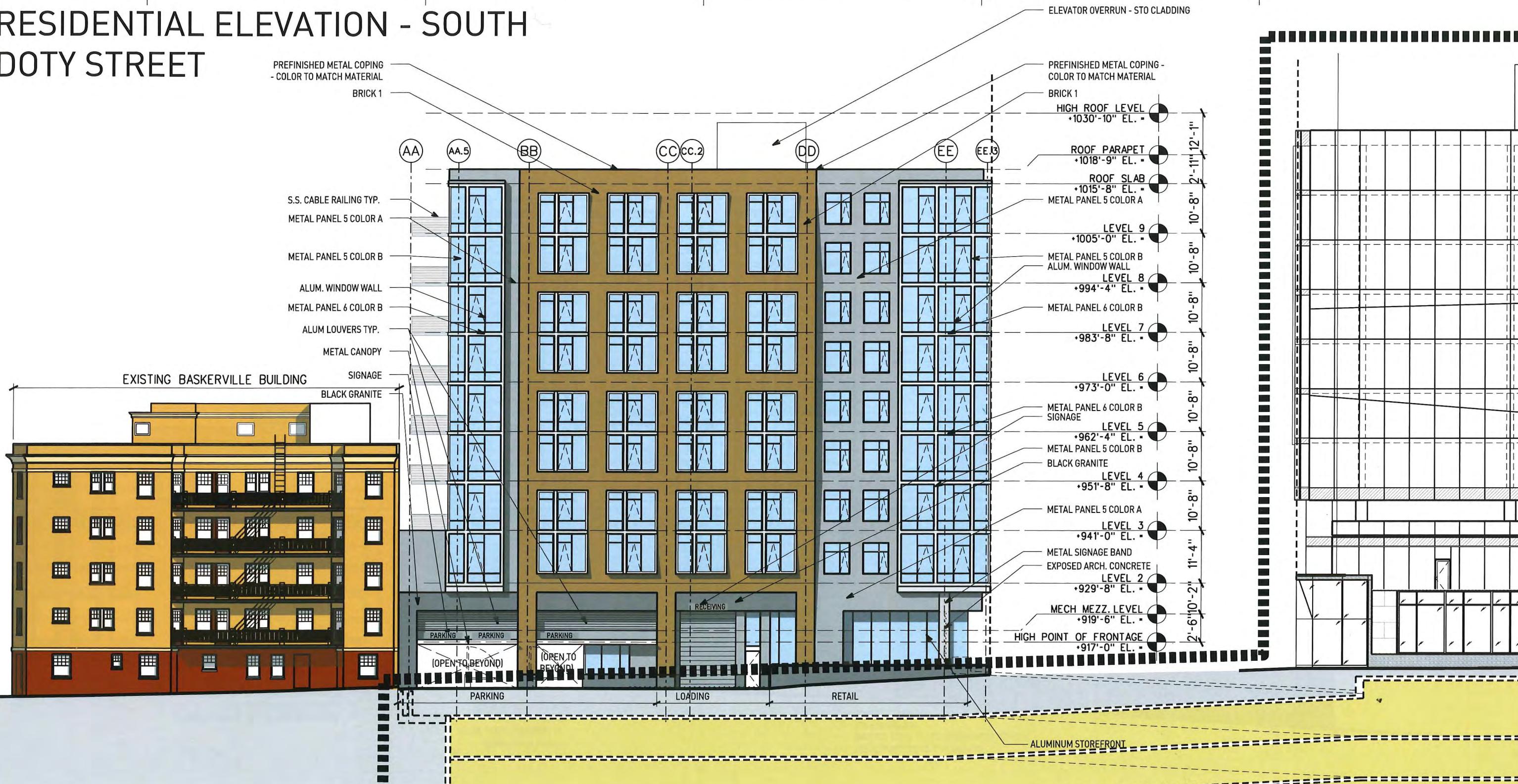
MARCH 4, 2015



Urban Land Interests



RESIDENTIAL ELEVATION - SOUTH DOTY STREET



ANCHOR PROPERTIES REDEVELOPMENT

MARCH 4, 2015



Urban Land Interests



RESIDENTIAL ELEVATION - SOUTHWEST HAMILTON STREET



ANCHOR PROPERTIES REDEVELOPMENT

MARCH 4, 2015



Urban Land Interests

