

# GOODMAN PARK ICE RINK STORM SEWER LINING 2016

City of Madison  
Department of Public Works  
**PARKS DIVISION**

City-County Building, Suite 104  
210 Martin Luther King, Jr. Blvd.  
PO Box 2987  
Madison, WI 53701-2987

*play*  
**MADISON  
PARKS**

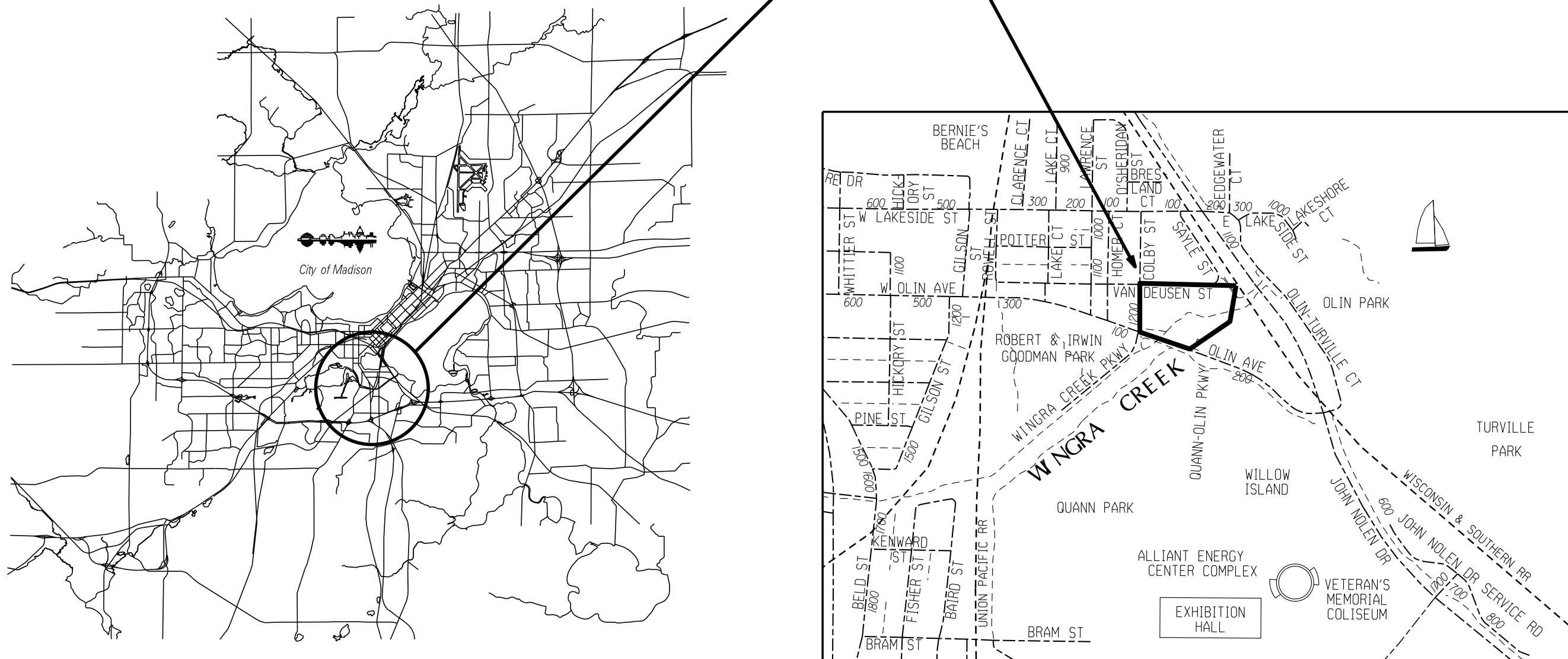


## INDEX OF SHEETS

SHEET NO.	TITLE
1	
P1	SITE ACCESS AND EROSION CONTROL
P2	PIPE LINING DETAILS
P3	TRAFFIC CONTROL PLAN

## PROJECT LOCATION

CONVENTIONAL SIGNS	
FIELD VERIFY ALL UTILITY LOCATIONS	
GAS	— G —
STORM SEWER	— ST —
SANITARY SEWER	— SAN —
WATER	— W —
OVERHEAD ELECTRIC	— OH —
POWER POLE	□



PROJECT:

**GOODMAN PARK ICE  
RINK STORM SEWER  
LINING 2016**

**GOODMAN PARK  
ICE RINK  
37 VAN DEUSEN ST  
MADISON, WI 53703**

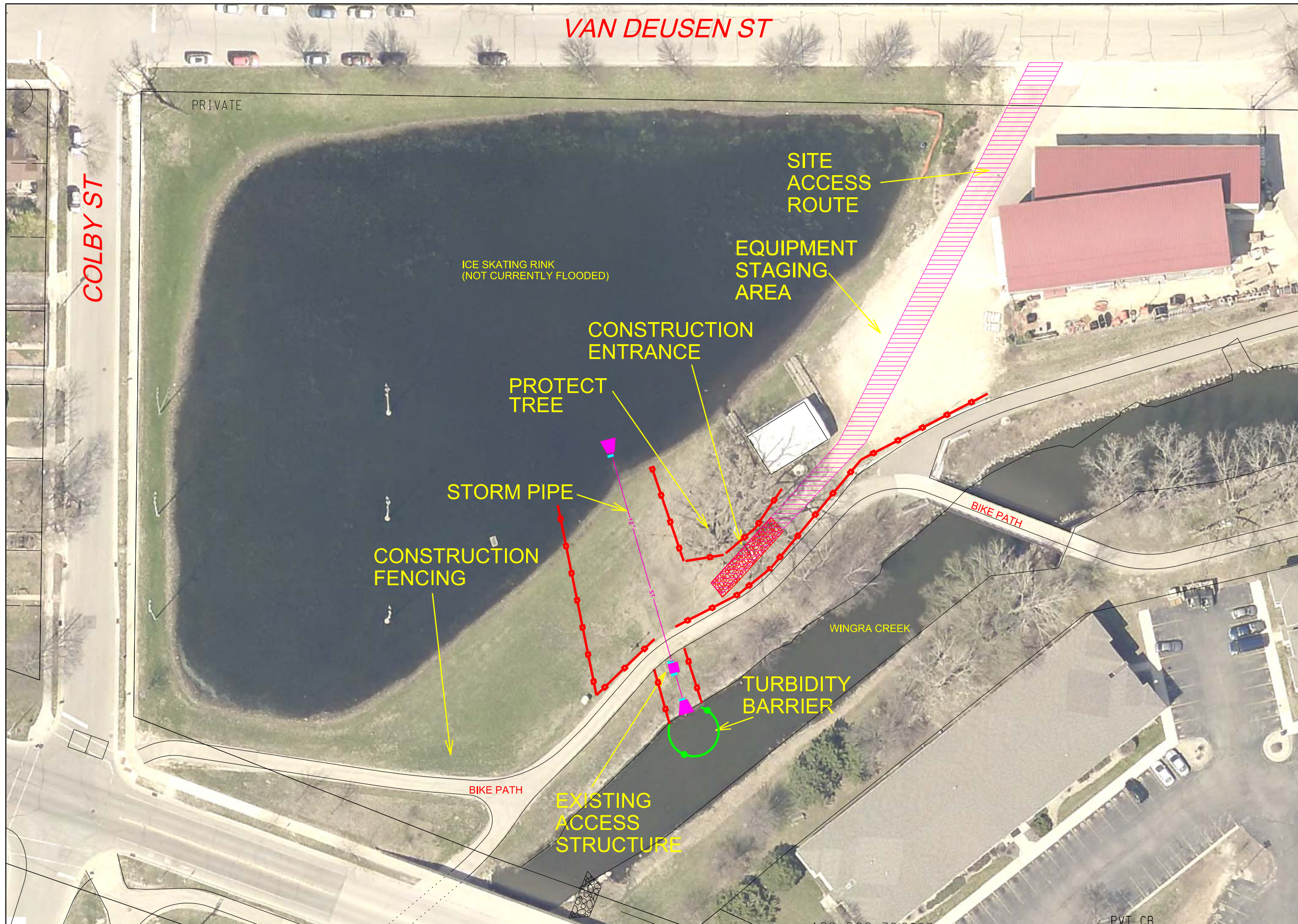
Although every effort has been made in preparing these plans and checking them for accuracy, the contractor and subcontractors must check all details and dimensions of their trade and be responsible for the same.

ITEM	DATE
Drawn by: CCS	09-13-16
Revised by:	

SHEET TITLE:  
**TITLE**

SHEET NUMBER:  
**1**





VAN DEUSEN ST

COLBY ST

PRIVATE

ICE SKATING RINK  
(NOT CURRENTLY FLOODED)

SITE  
ACCESS  
ROUTE

EQUIPMENT  
STAGING  
AREA

CONSTRUCTION  
ENTRANCE

PROTECT  
TREE

STORM PIPE

CONSTRUCTION  
FENCING

BIKE PATH

WINGRA CREEK

TURBIDITY  
BARRIER

BIKE PATH

EXISTING  
ACCESS  
STRUCTURE

City of Madison  
Department of Public Works  
PARKS DIVISION

City-County Building, Suite 104  
210 Martin Luther King, Jr. Blvd.  
PO Box 2987  
Madison, WI 53701-2987

play  
MADISON  
PARKS

Graphical Scale

0 50 ft



PROJECT:  
GOODMAN  
PARK ICE RINK  
STORM SEWER  
LINING

GOODMAN PARK  
ICE RINK  
37 VAN DEUSEN ST  
MADISON, WI 53703

Although every effort has been made in preparing these plans and checking them for accuracy, the contractor and subcontractors must check all details and dimensions of their trade and be responsible for the same.

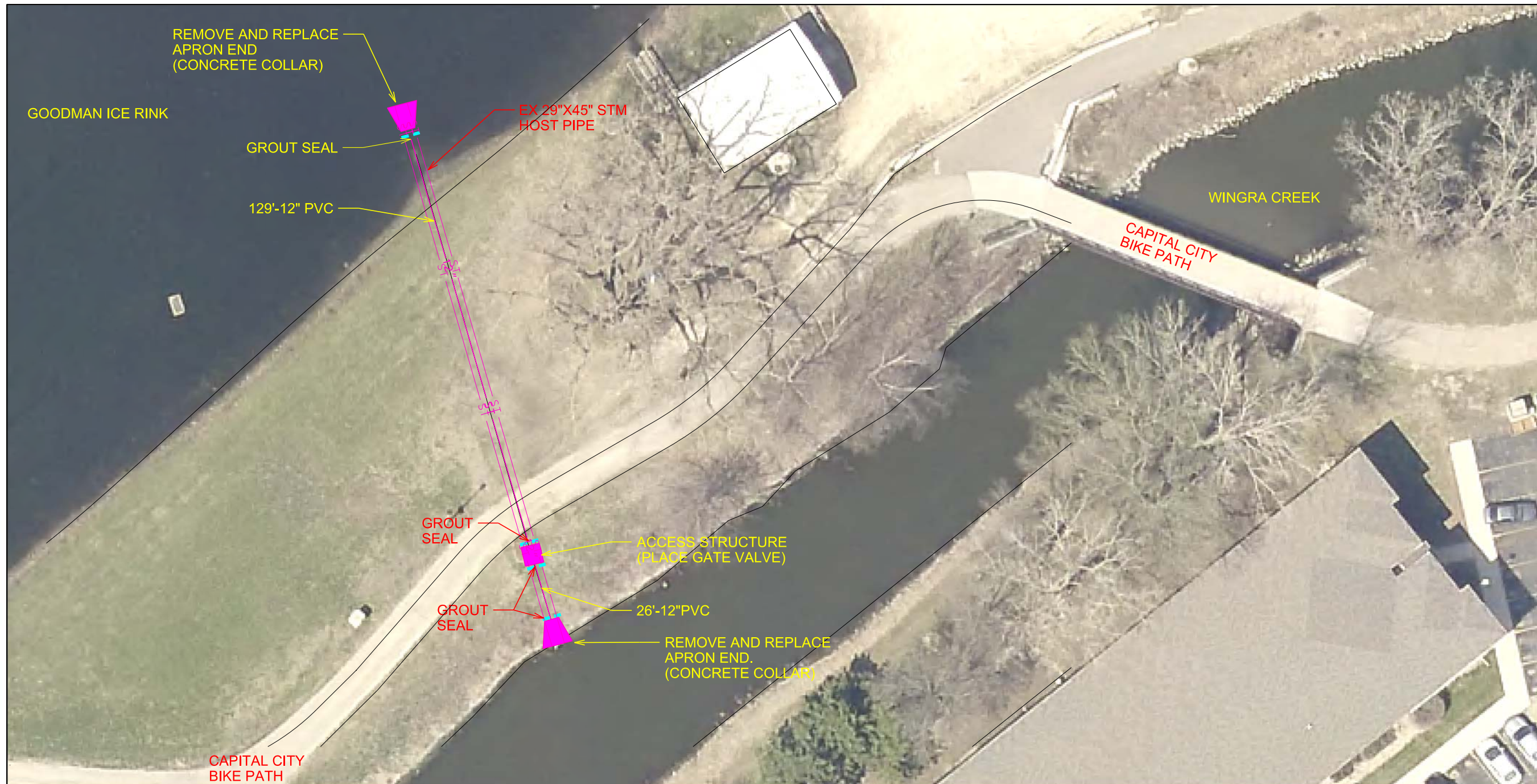
ITEM	DATE
Drawn by: CCS	9-14-2016

Approved by: \_\_\_\_\_  
 \_\_\_\_\_  
 \_\_\_\_\_

SHEET TITLE:  
SITE ACCESS AND  
EROSION CONTROL

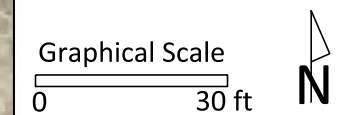
SHEET NUMBER:  
**P-1**





City of Madison  
 Department of Public Works  
**PARKS DIVISION**

City-County Building, Suite 104  
 210 Martin Luther King, Jr. Blvd.  
 PO Box 2987  
 Madison, WI 53701-2987



PROJECT:  
**GOODMAN  
 PARK ICE  
 RINK STORM  
 SEWER LINING**

**GOODMAN PARK  
 ICE RINK  
 37 VAN DEUSEN ST  
 MADISON, WI 53703**

Although every effort has been made in preparing these plans and checking them for accuracy, the contractor and subcontractors must check all details and dimensions of their trade and be responsible for the same.

ITEM	DATE
Drawn by: CCS	9-14-16
Approved by:	

Approved by: \_\_\_\_\_

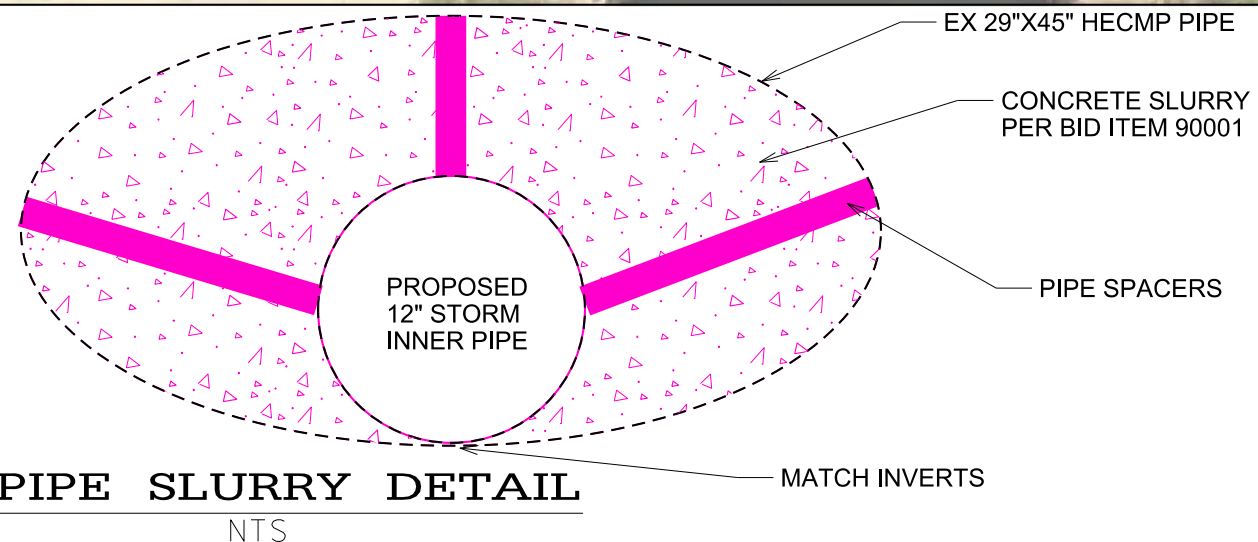
\_\_\_\_\_

\_\_\_\_\_

\_\_\_\_\_

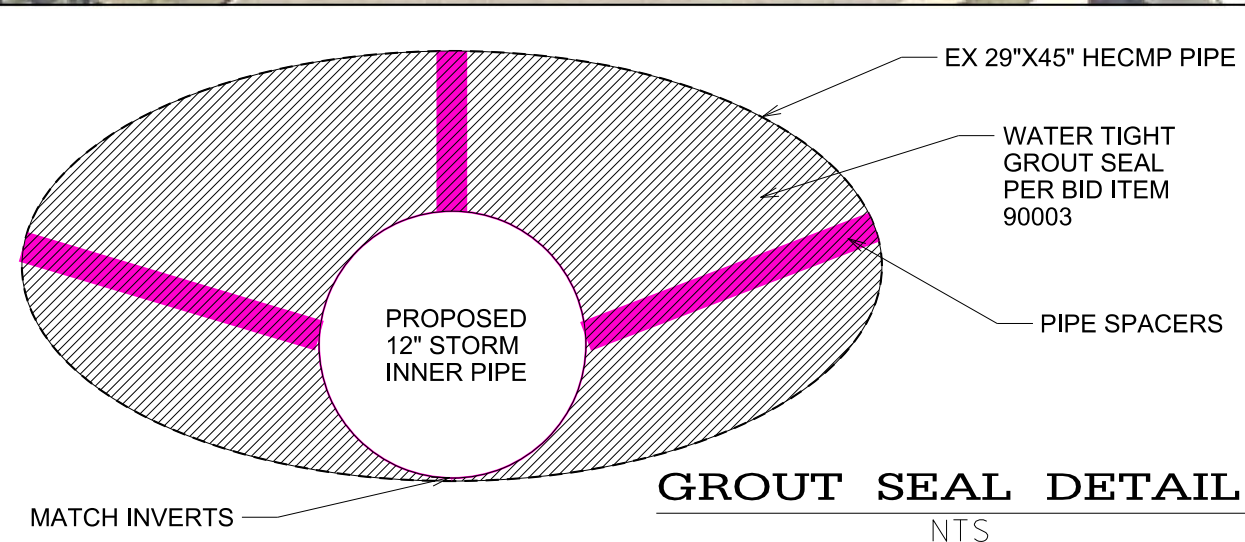
SHEET TITLE:  
**PINE LINING  
 DETAILS**

SHEET NUMBER:  
**P-2**



**PIPE SLURRY DETAIL**

NTS



**GROUT SEAL DETAIL**

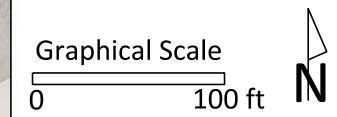
NTS





**City of Madison**  
 Department of Public Works  
**PARKS DIVISION**

City-County Building, Suite 104  
 210 Martin Luther King, Jr. Blvd.  
 PO Box 2987  
 Madison, WI 53701-2987



PROJECT:  
**GOODMAN PARK ICE RINK STORM SEWER LINING**

**GOODMAN PARK ICE RINK**  
 37 VAN DEUSEN ST  
 MADISON, WI 53703

Although every effort has been made in preparing these plans and checking them for accuracy, the contractor and subcontractors must check all details and dimensions of their trade and be responsible for the same.

ITEM	DATE
Drawn by: CCS	9-15-16

Approved by: \_\_\_\_\_  
 \_\_\_\_\_  
 \_\_\_\_\_

SHEET TITLE:  
**SITE ACCESS AND EROSION CONTROL**

SHEET NUMBER:  
**P-3**